



Sarasota County

**Unincorporated Areas Around
City Of North Port:
Fire Service Delivery Station #26**

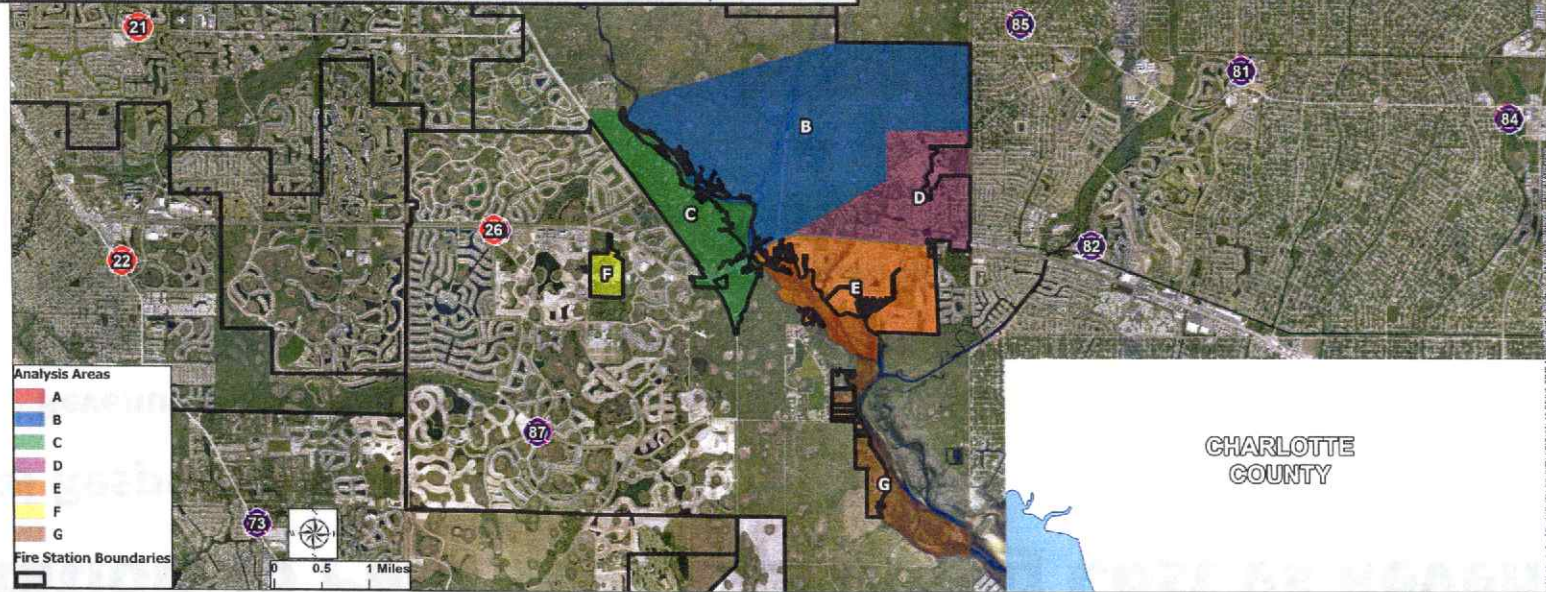
SCFD Station 26

- Personnel Cost: \$3,482,892
- Operating Cost: \$393,698
 - Annual lease: \$49,172



EMS MSTU & SCFR Assessment Summary

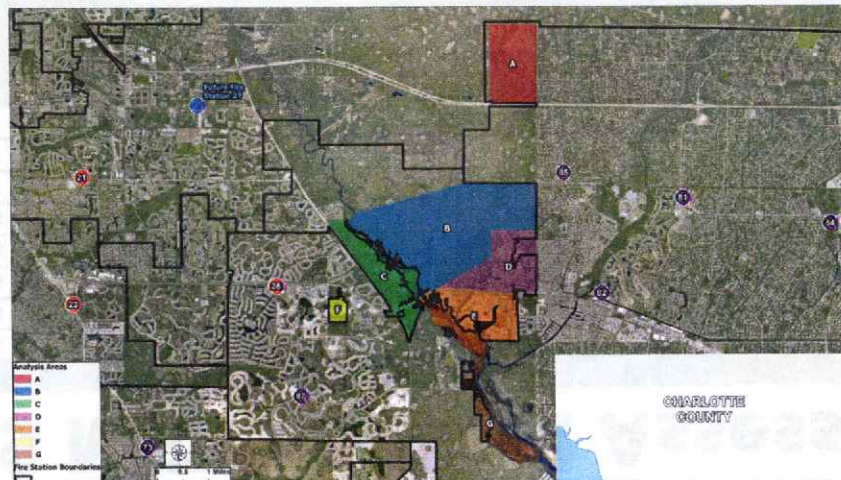
Name	EMS MSTU	SCFR Assessment	EMS MSTU & SCFR Assessment Total	FY25 Incidents
A	\$ 7,831.90	\$ 9,568.50	\$ 17,400.40	0
B	\$ 884.14	\$ 2,211.66	\$ 3,095.80	1
C	\$ 43,737.09	\$ 62,345.21	\$ 106,082.30	60
D	\$ 152,921.33	\$ 291,393.76	\$ 444,315.09	194
E	\$ 191,982.58	\$ 681,167.29	\$ 873,149.87	279
F	\$ 354.17		\$ 354.17	5
G	\$ 28,660.17	\$ 35,443.90	\$ 64,104.07	9
Totals	\$426,371.38	\$ 1,082,130.32	\$ 1,508,501.70	548



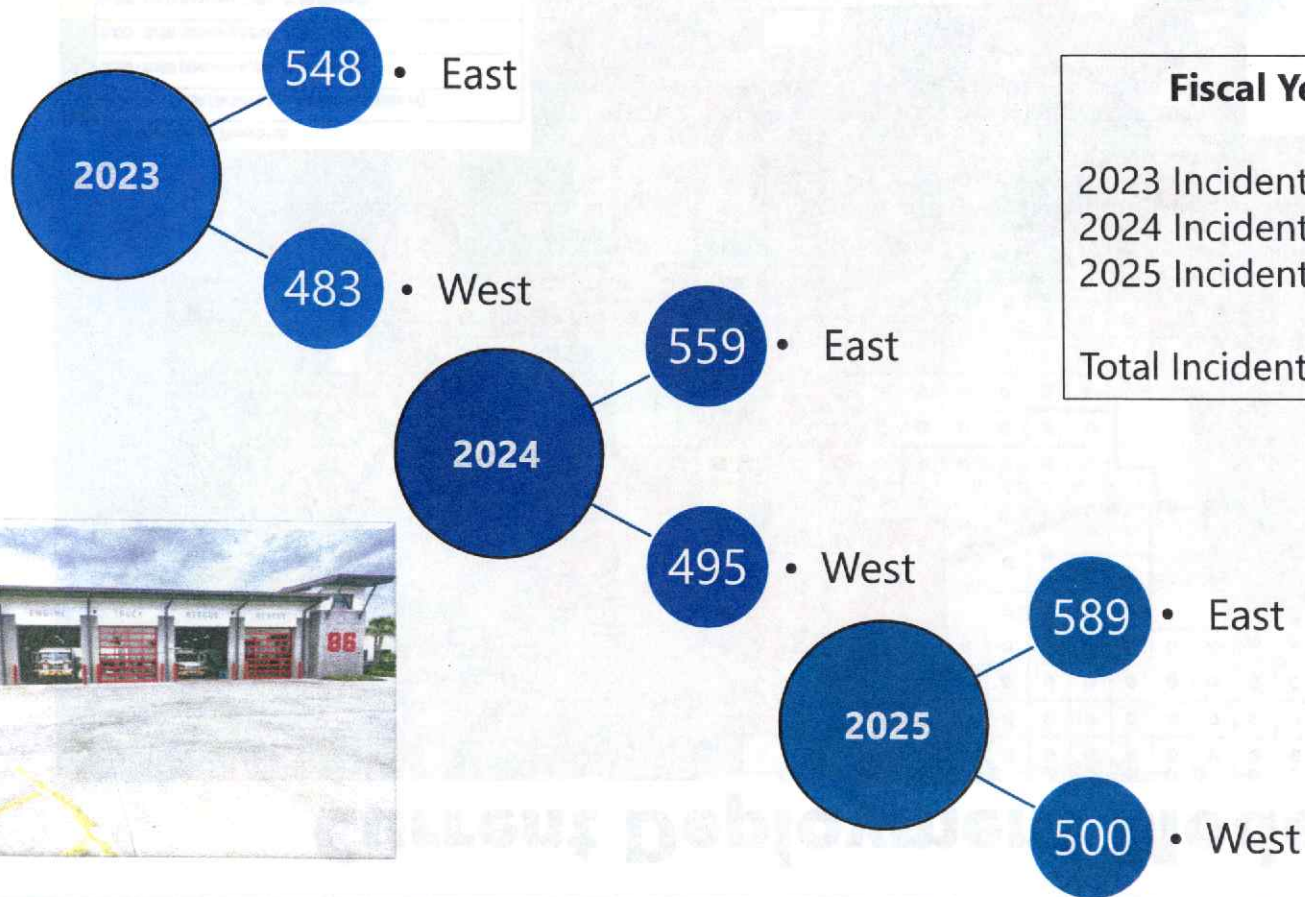
Station 26 Personnel/Operating Cost vs Revenue

Total Response Area

- Revenue (Ad Valorem/Assessments): \$4,564,992
- Revenue Reduction Unincorporated: **(\$1,508,501)**
- Remaining Revenue: \$3,056,491
- Current Personnel & Operating Costs: **\$3,879,590**
- Difference: **(\$ 823,099)**



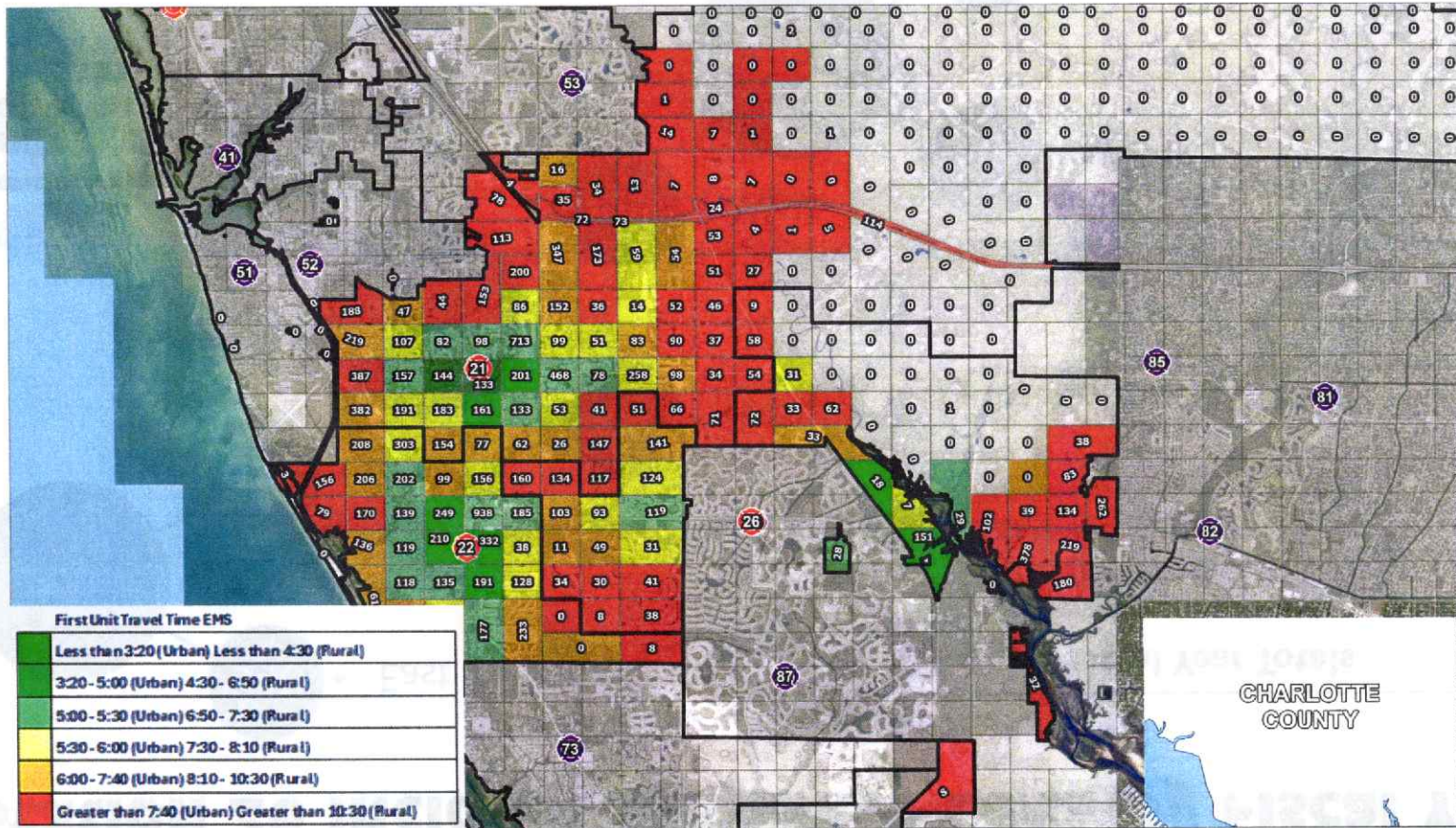
Station 26 Incident Response Data By Fiscal Year



Fiscal Year Totals	
2023 Incidents:	1,031
2024 Incidents:	1,054
2025 Incidents:	1,089
Total Incidents:	3,174



Current Deployment Model



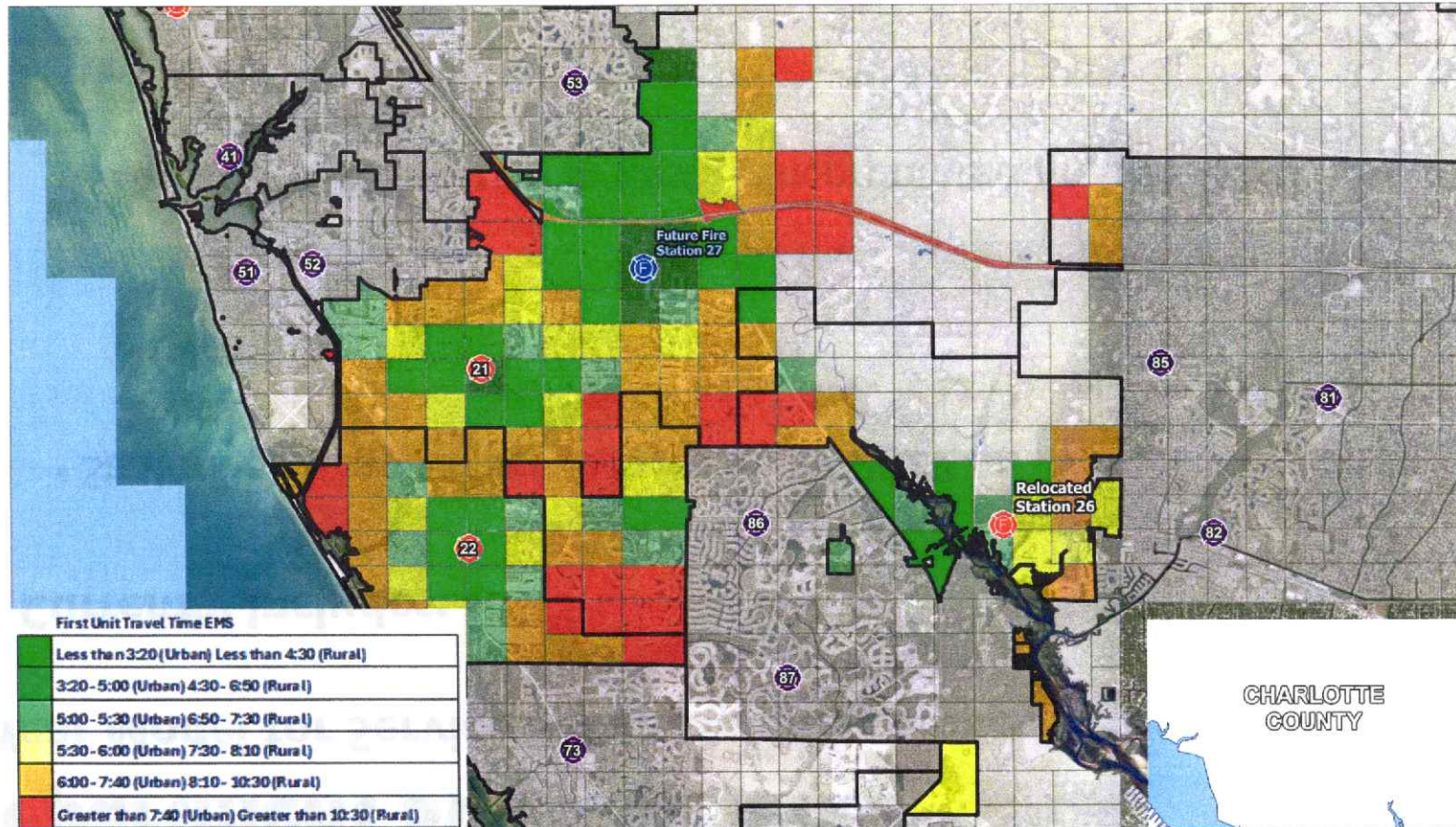
Department Strategic Plan

5-Year Model for Service Enhancements

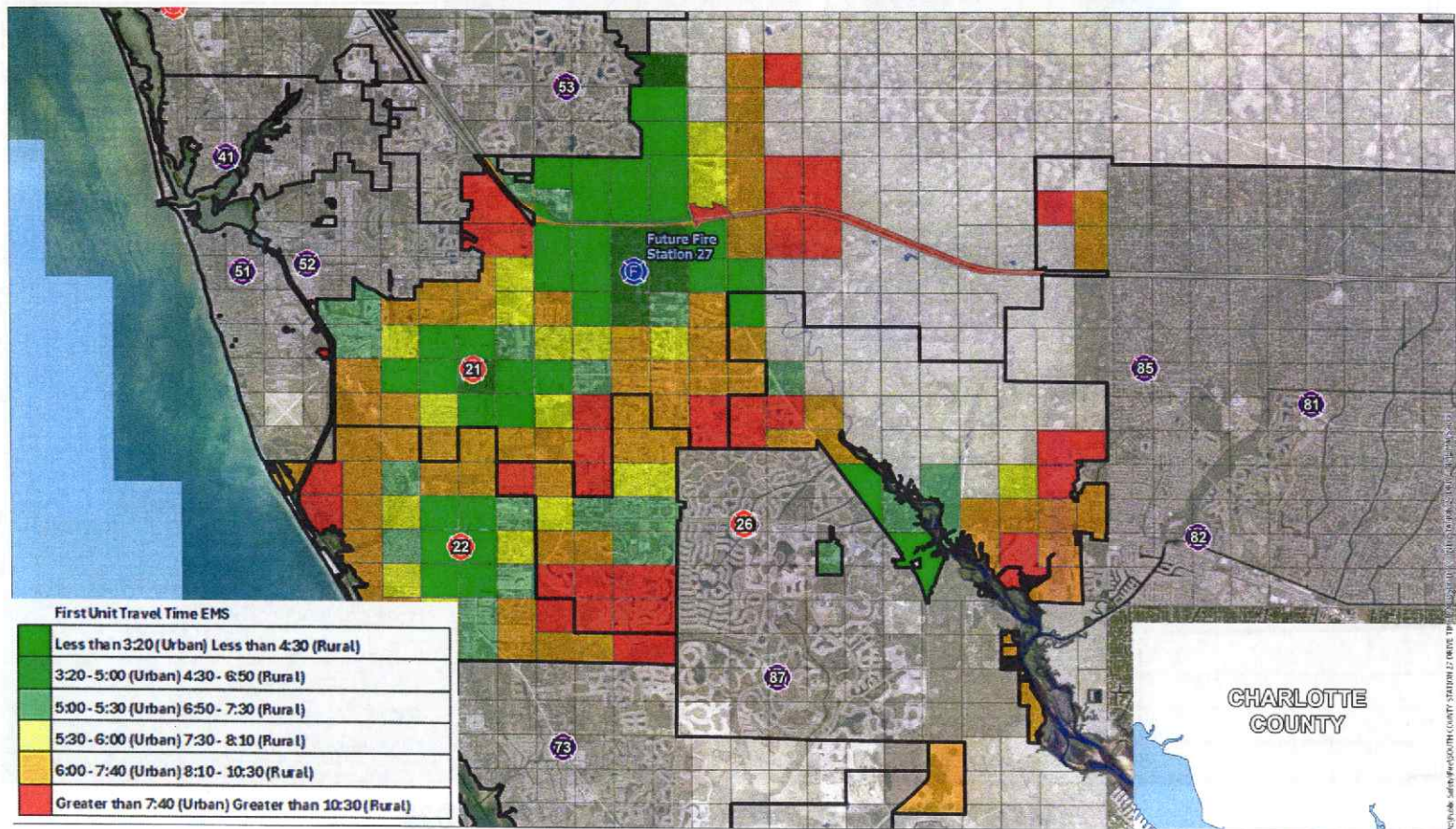
Currently Includes:

- Station #27 (East Venice & Jackson) **FY 2027**
 - Engine
 - Rescue
 - Truck
- Station #26 Relocation to East Unincorporated Area **FY 2030**

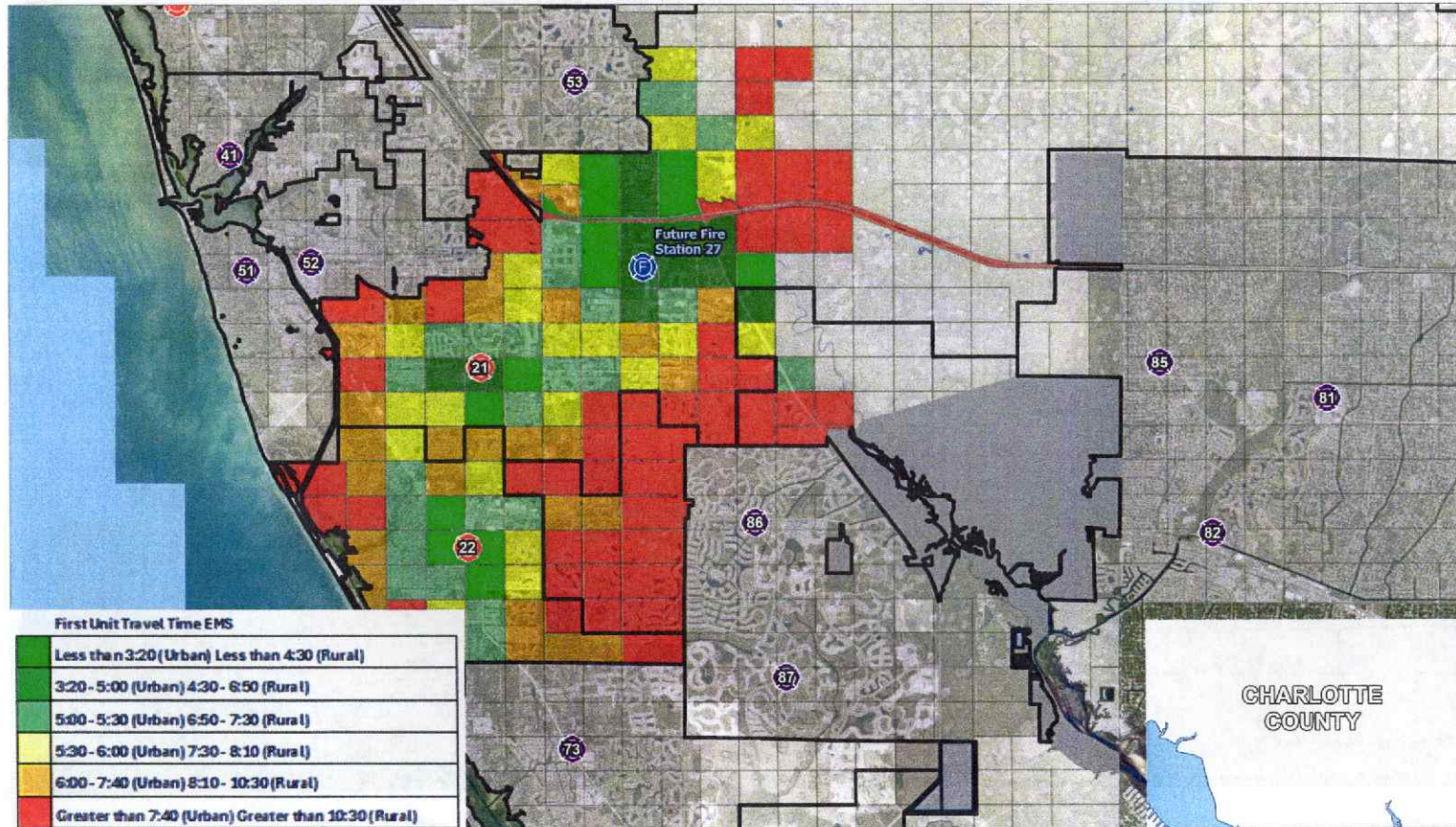
Planned Future Deployment Model with Station 27 Added and Station 26 Relocated



Current Deployment Model with Station 27 Added



Current Deployment Model with Station 27 Added and Station 26 Removed Due to Annexation



Current Deployment Model with Station 27 Added and Station 26 Relocated West

