



# SUN Trail Extension Feasibility Study

from the Myakka State Forest in Gulf Cove along SR 776 to the intersection of US41/Tamiami Trail

Joint Sarasota/Manatee MPD Board Meeting with Charlotte County-Punta Gorda MPD | January 25, 2021

Charlotte County Work Order # 151, File#2020000191



# Project Team



**Client: Charlotte County (JPA with FDOT D1)**

**County Project Manager:**

Mike Koenig, CPRP

[Mike.Koenig@charlottecountyfl.gov](mailto:Mike.Koenig@charlottecountyfl.gov)



**Consultant: CALTRAN Engineering Group, Inc.**

**Consultant Project Manager:**

Moe Lavasani, PhD, P.E.,

[mlavasani@caltrangroup.com](mailto:mlavasani@caltrangroup.com)

**Support Team:**

Juan S. Calderon, P.E., PTOE, QA/QC Manager

Homa Fartash, PhD, Engineering Lead

Jeannette Gonzalez-Lazo, PI/PO Coordinator



# SUN Trail Program





- ❑ Provides funding for developing a statewide system of paved, multi-use trails for bicyclists and pedestrians.
- ❑ Used for funding projects within the SUN Trail Network.
- ❑ The SUN Trail Network is the paved component of the Florida Greenways and Trails System (FGTS) Priority Land Trail Network.
- ❑ Program will not fund components such as sidewalks, nature trails, and amenities associated with trail projects.
- ❑ Funded projects are operated and maintained by an entity other than FDOT following construction. FDOT does not fund operation and maintenance costs.
- ❑ FDOT defines multi-use trail as a paved, shared-use path.
- ❑ Trail width is typically 12 feet wide (may vary 10 to 14 feet). Trail width as narrow as 8 feet may be used in extremely constrained areas such as bridges or environmentally sensitive lands.
- ❑ FGTS establishes Florida's vision for a statewide trail network and provides the framework for systematically closing trail gaps and connecting priority corridors through coordinated planning efforts of public and private partners.
- ❑ Additional information available at: <http://www.floridasuntrail.com>





# Project Description



There is a growing nationwide trend of creating mixed-use communities centered around ,  and transit facilities. By evaluating the existing and future roadway conditions and analyzing the economic impact as well as compiling acquired data, this study aims to evaluate the potential implementation of that trend while providing **safe, accessible** transportation options along the project limits.



**SUN Trail Network**

- EXISTING
- PROGRAMMED/FUNDED
- PARTIALLY FUNDED FOR PRE-CONST
- UNFUNDED GAP

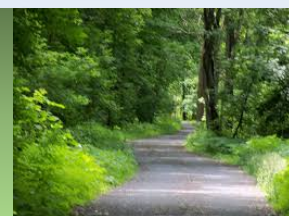
**Coast to Coast Trail Buffer**

**St. Johns River-to-Sea Buffer**





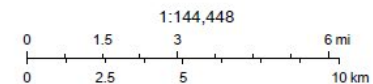
# SUN Trail Network



SUN Trail Network (Source FDOT)



December 21, 2020



# Project Location

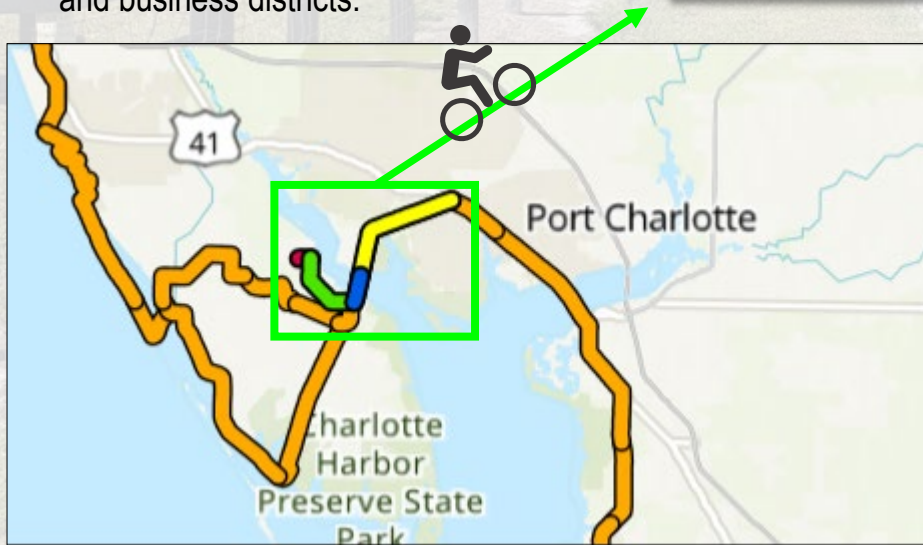
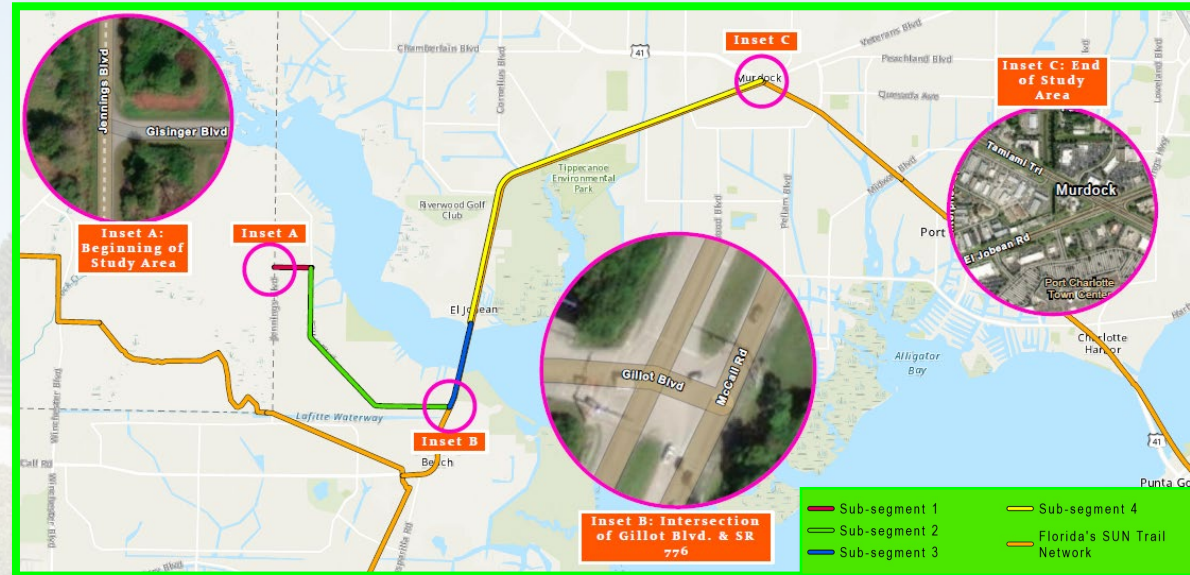


## Trail Path:

- ❑ Gisinger Blvd. from Jennings Blvd. to Gillot Blvd
- ❑ Gillot Blvd. from Gisinger Blvd. to State Road (SR) 776
- ❑ SR 776 from Gillot Blvd. to US 41 (Tamiami Trail).

## Trail Length: 11 miles

35% of the length is located within residential land use and the rest (along SR 776/S McCall Rd.) fall within commercial and business districts.



This path aims to boost the local economy in Charlotte County by attracting more nonmotorized consumers, tourists, and visitors and promote multimodal opportunities.



# Trail Potential Route





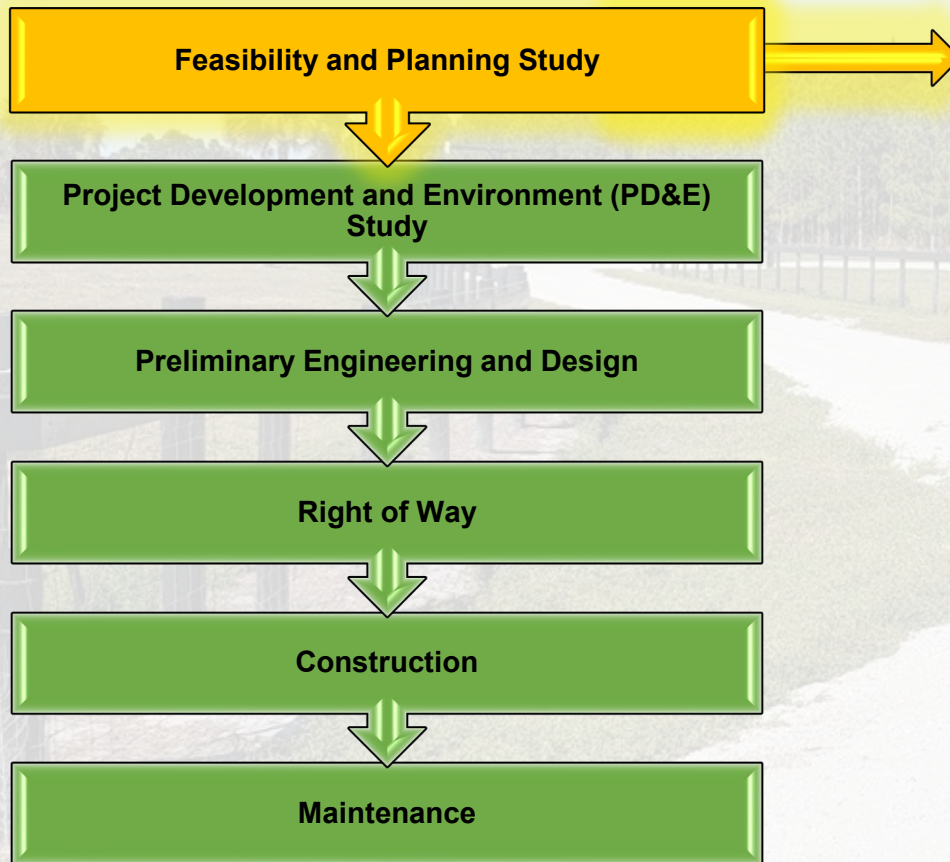
# Summary of Purpose and Need

- ❑ Provide connectivity to Myakka State Forest
- ❑ Close part of existing trail gap
- ❑ Expand overall trail system connectivity
- ❑ Facilitate jurisdictional agencies coordination
- ❑ Evaluate opportunity to incorporate points of origin and destinations defined for the SUN Trail System
- ❑ Define preferred route that achieves jurisdictional agency consensus and meets SUN Trail criteria





# Study Process and Methodology



## Existing Condition Evaluation

- Field Visit
- Inventory Data Collection
- Crash Data
- Traffic Volume Data Collection
- Existing Condition Analysis
- Review Regional Bicycle and Pedestrian Master Plan

## Public Involvement (PI)

- Gathering Information
- Public Outreach

## Economic Analysis

- Economic Impact Analysis
- Economic Benefit Maximization

## Implementation Strategy

- Conceptual Alternative Analysis
- Conceptual Design
- Funding

## Built Condition Analysis

## Draft Report

## Final Report

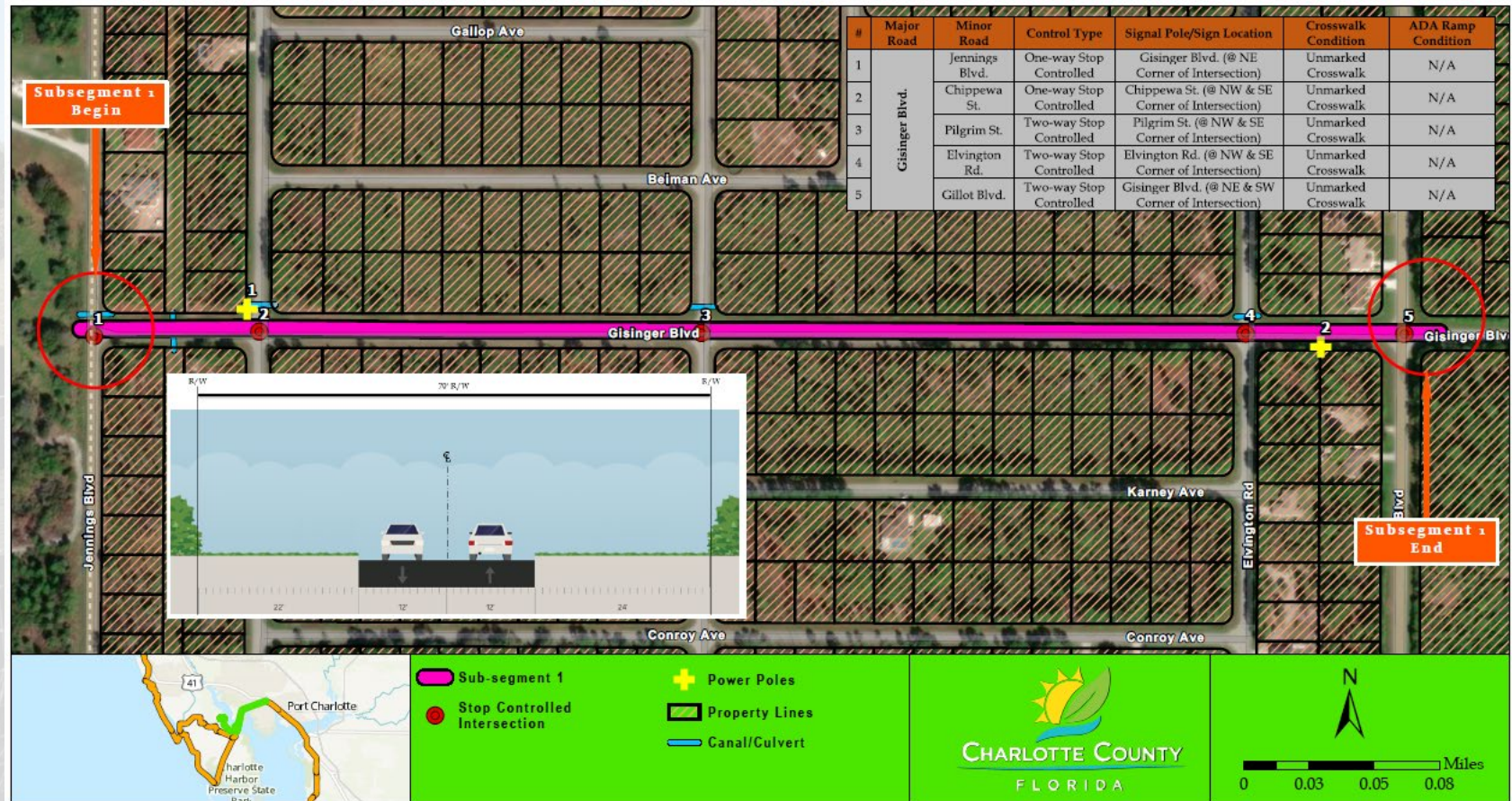
## Meeting and Coordination



# Summary of Existing Condition



## Subsegment 1

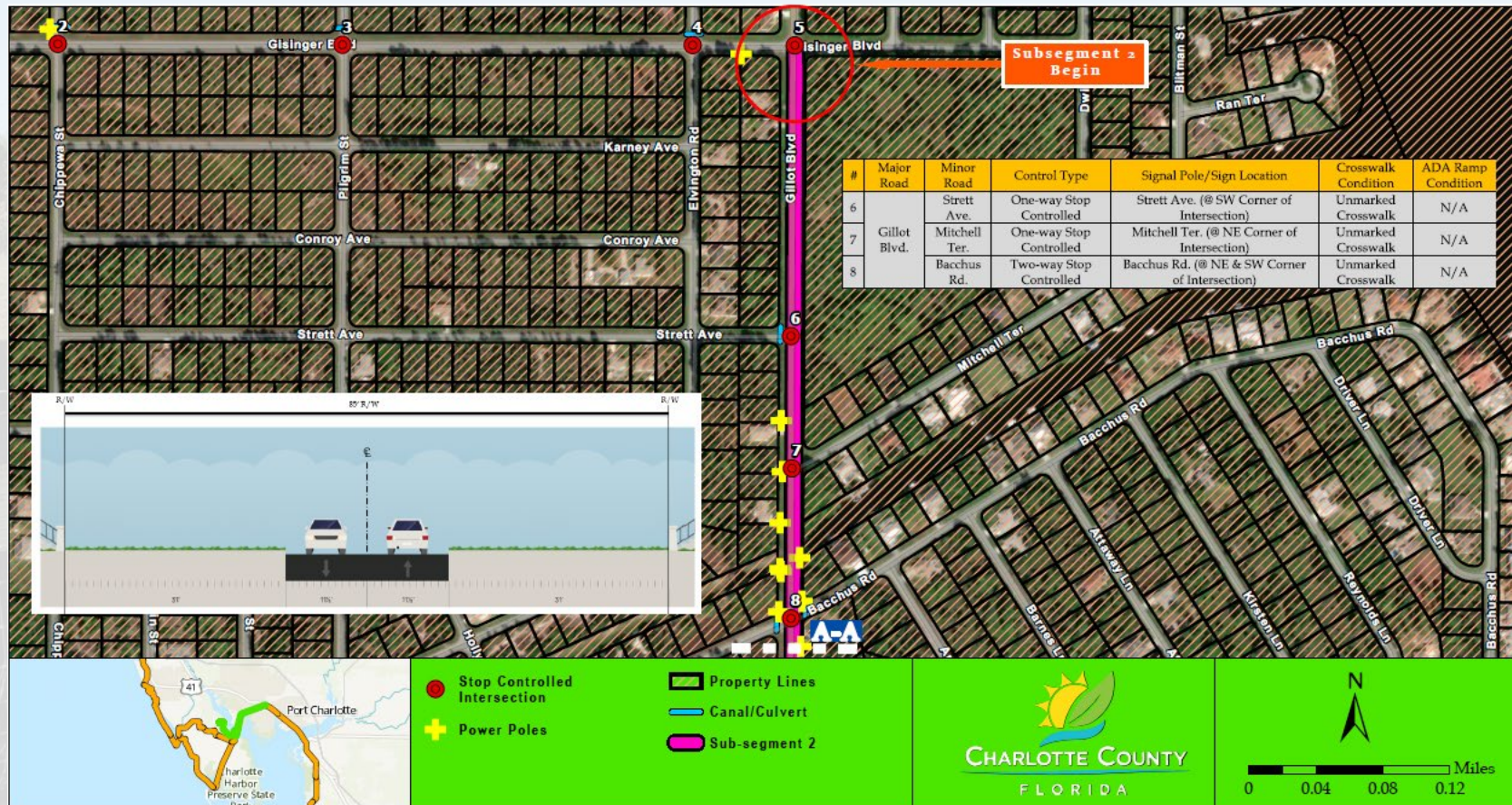




# Summary of Existing Condition



## Subsegment 2





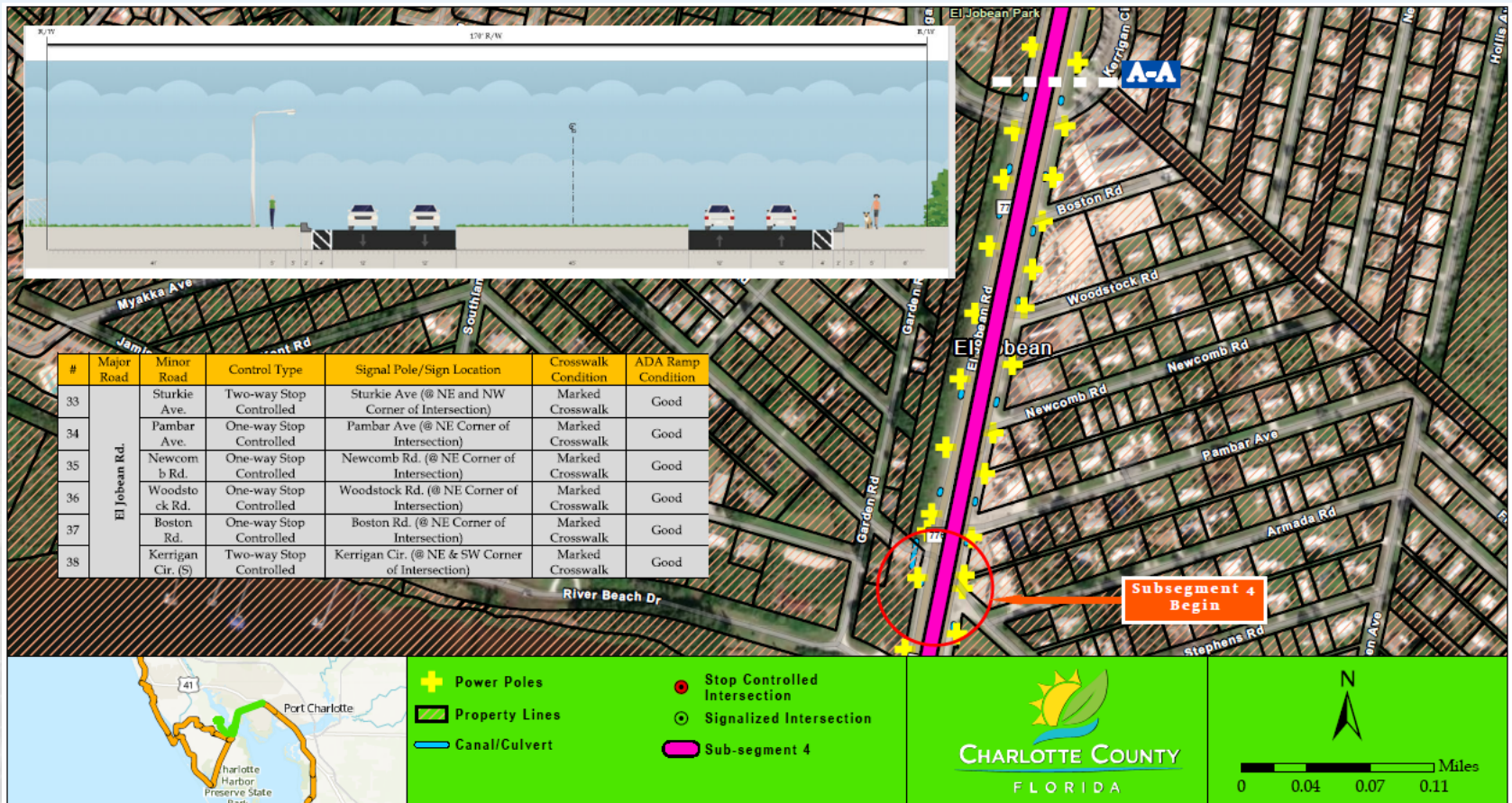




# Summary of Existing Condition

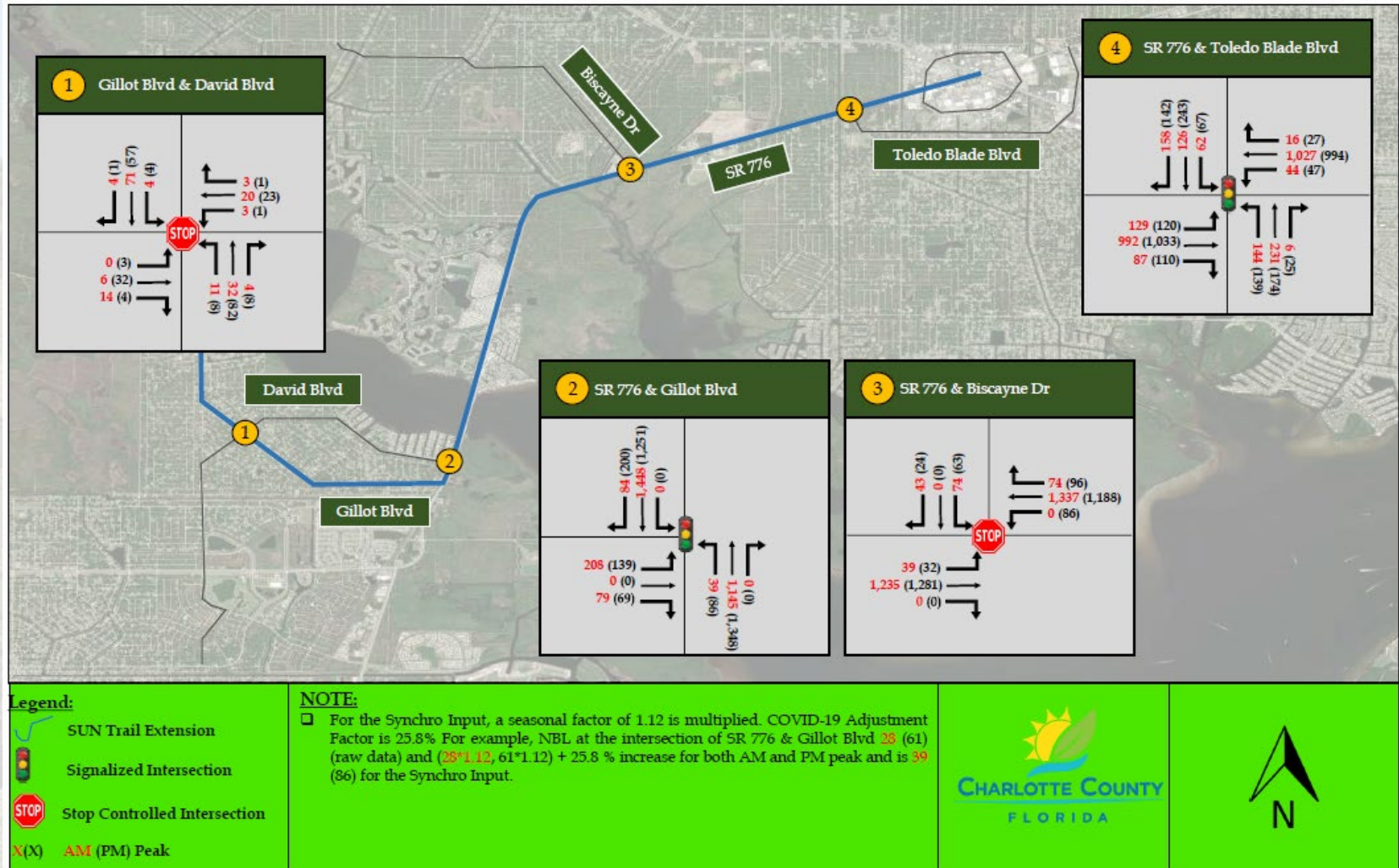


## Subsegment 4

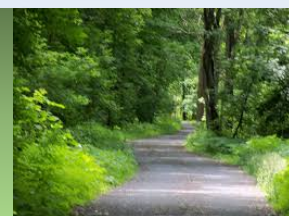




# Safety and Traffic Operational Analysis

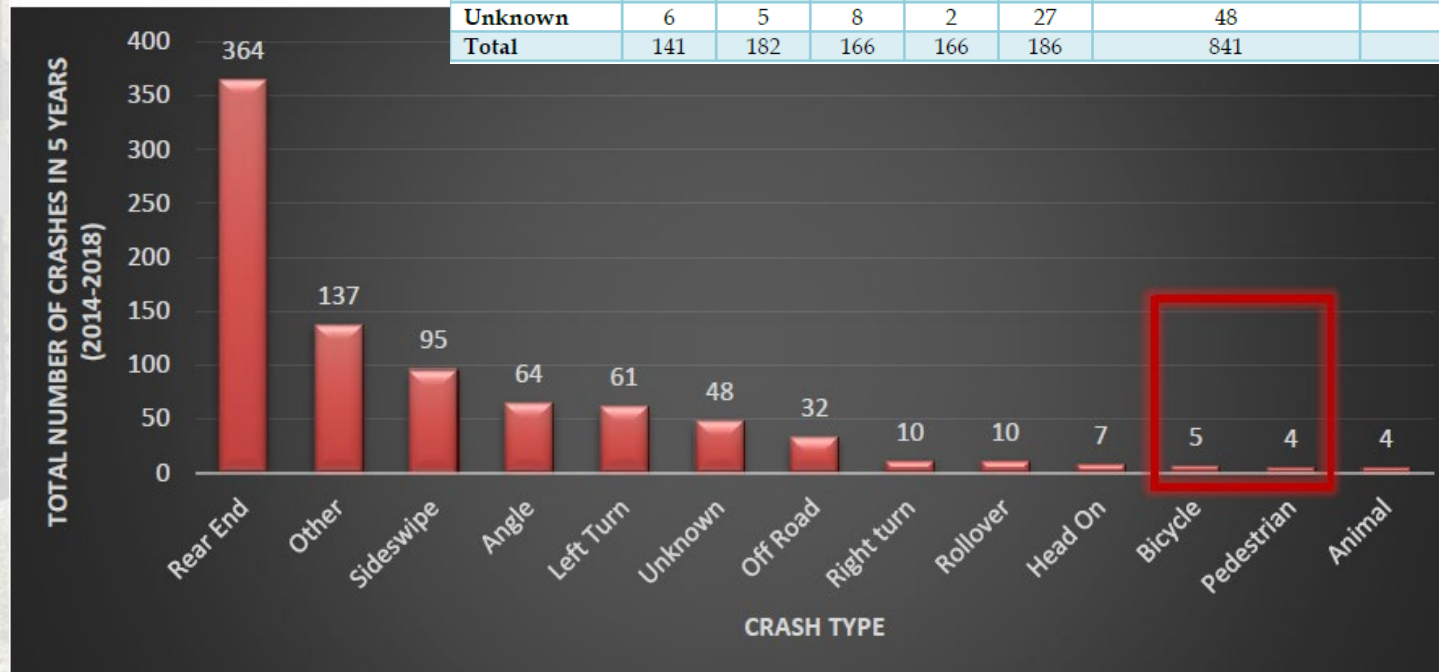


# Crash Analysis



Number of Crashes by Crash Type (2014-2018)

Crash Type	Year					Total of Five Years	%
	2014	2015	2016	2017	2018		
Pedestrian	0	1	2	1	0	4	0%
Bicycle	0	0	2	2	1	5	1%
Angle	6	21	9	11	17	64	8%
Sideswipe	15	17	15	36	12	95	11%
Rear End	64	77	83	76	64	364	43%
Right turn	1	4	1	1	3	10	1%
Rollover	1	0	4	2	3	10	1%
Head On	3	1	2	1	0	7	1%
Left Turn	11	14	10	11	15	61	7%
Off Road	11	1	1	3	16	32	4%
Animal	1	2	0	0	1	4	0%
Other	22	39	29	20	27	137	16%
Unknown	6	5	8	2	27	48	6%
Total	141	182	166	166	186	841	100%





# Public Involvement Plan (PIP)



## 1. Elected Officials:

- State Officials
- County Commissioners & Representatives

## 2. Stakeholders:

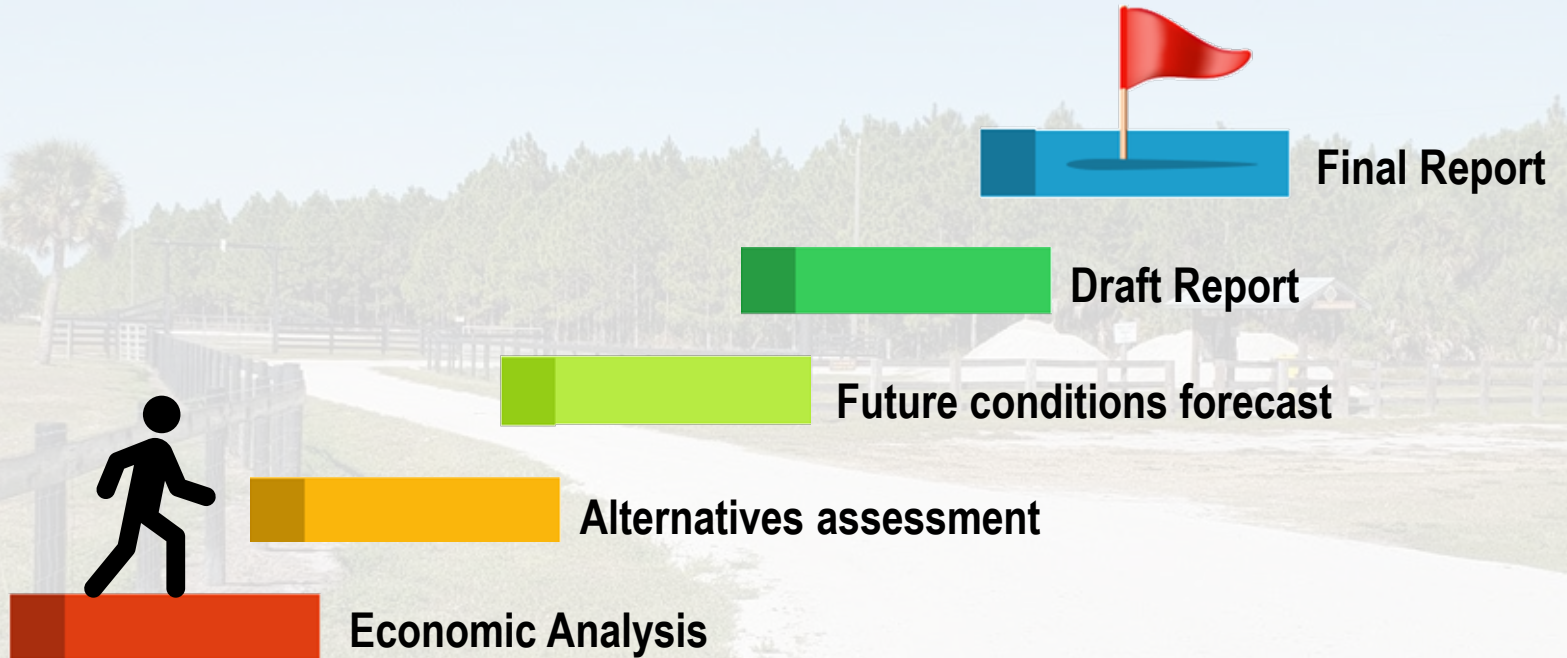
- Municipalities,
- MPO
- FDOT
- Special Interest Group/HOAs
- Affected Business

## 3. Property Owners & occupants

- Two public meetings will be scheduled (virtually) to get general public inputs for the project and also later on in alternative selection phase



# Next Steps





# Individual & Public Comments



## ☐ Email the County Project Manager or Consultant

- **County Project Manager:**  
Mike Koenig, CPRP  
[Mike.Koenig@charlottecountyfl.gov](mailto:Mike.Koenig@charlottecountyfl.gov)
- **Consultant Project Manager:**  
Moe Lavasani, PhD, P.E.,  
[mlavasani@caltrangroup.com](mailto:mlavasani@caltrangroup.com)

## ☐ A comment form will be prepared for Public Meetings/Webinars



