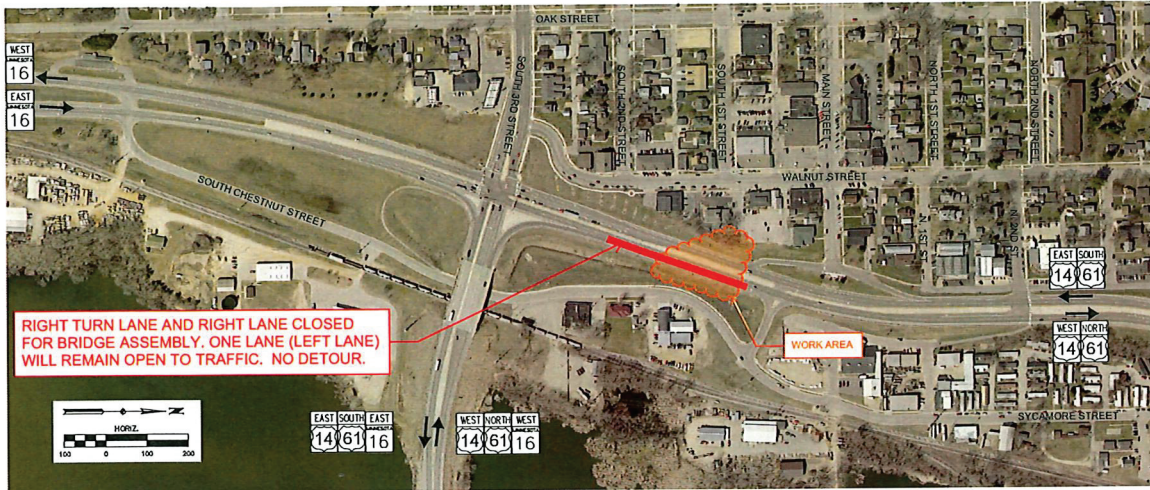
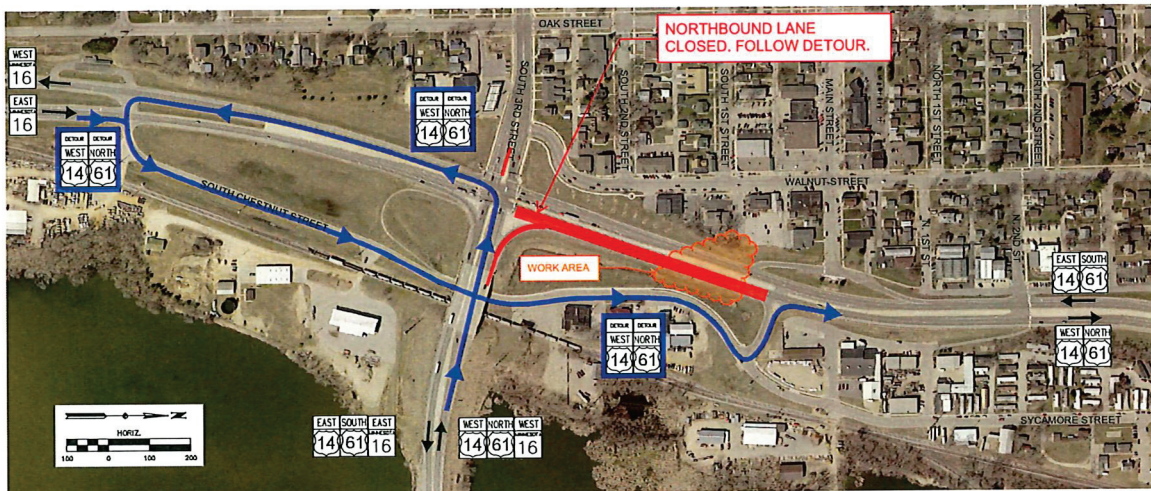


# LA CRESCENT TRUSS BRIDGE INSTALLATION - TRAFFIC IMPACTS

NORTHBOUND TRAFFIC IMPACTS:  
MONDAY, AUGUST 1ST 2022 FROM 8:00 AM TO THURSDAY, AUGUST 4TH 8:00 PM



NORTHBOUND LANE CLOSURE:  
THURSDAY, AUGUST 4TH 2022 FROM 8:00 PM TO 4:00 AM FRIDAY, AUGUST 5TH



SOUTHBOUND TRAFFIC IMPACTS:  
THURSDAY, AUGUST 4TH 2022 FROM 11:00 PM TO 1:00 AM FRIDAY, AUGUST 5TH

