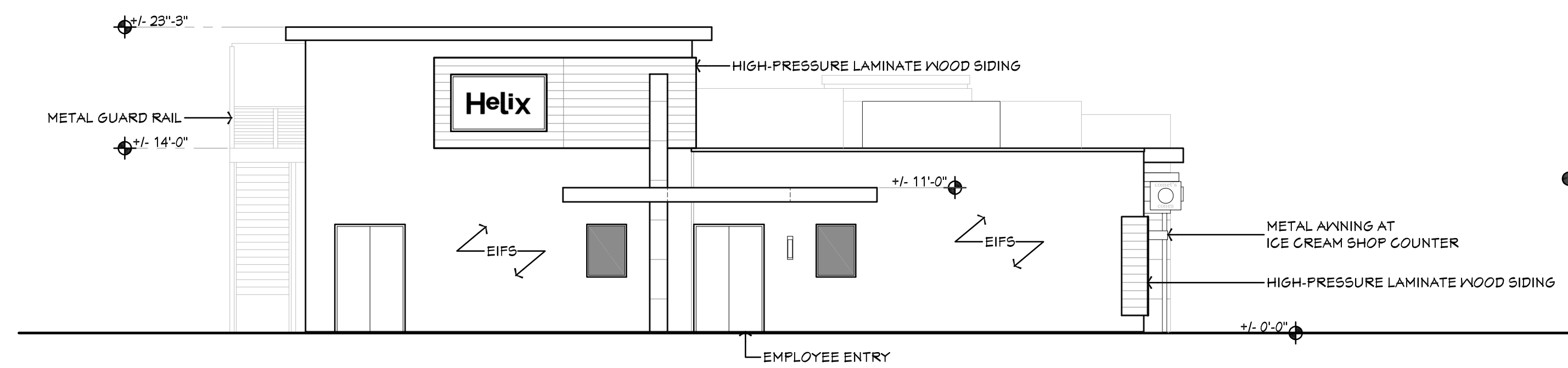


6 - Front Elevation

@ Entry

1/8"=1'-0"



5 - Side Elevation

@ Employee Entry

1/8"=1'-0"



4 - View looking towards Bar and Entry



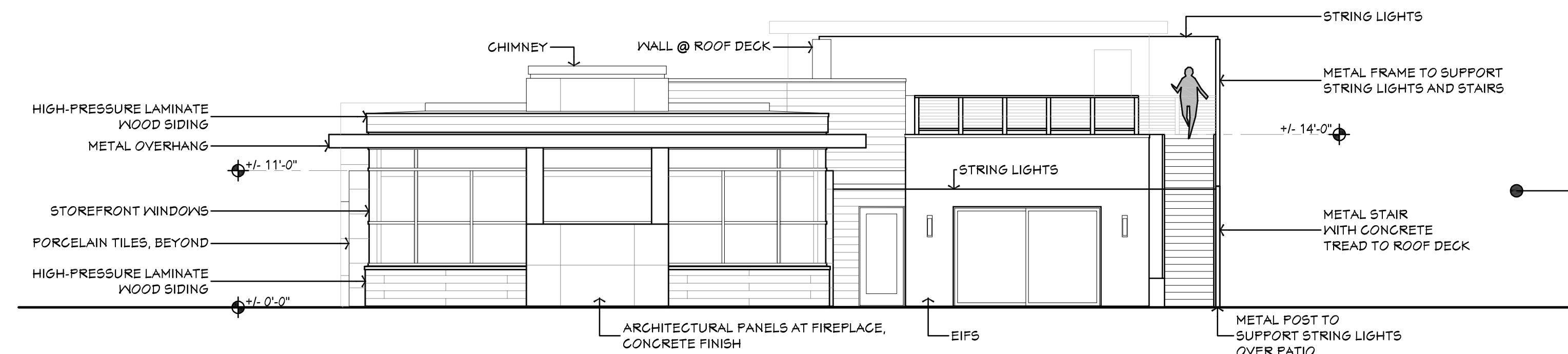
3 - View looking towards Employee Entry and Main Entry



2 - View looking towards Employee Entry



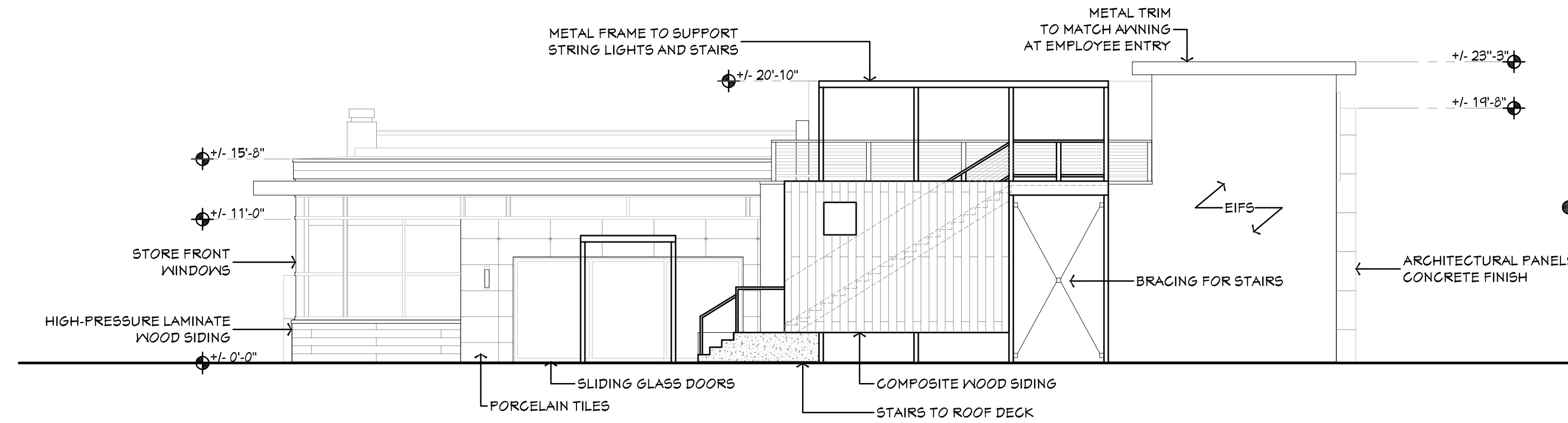
1 - View looking towards Roof Deck and Employee Entry



6 - Side Elevation

Looking towards Roof Deck, Patio and Bar

1/8"=1'-0"



5 - Rear Elevation

Looking towards Roof Deck, Patio and Bar

1/8"=1'-0"



4 - View looking towards Bar and Entry



3 - View looking towards Roof Deck, Patio and Bar



2 - View looking towards Roof Deck, Patio and Bar



1 - View looking towards Roof Deck and Patio