

Tennessee RiverLine Experiences

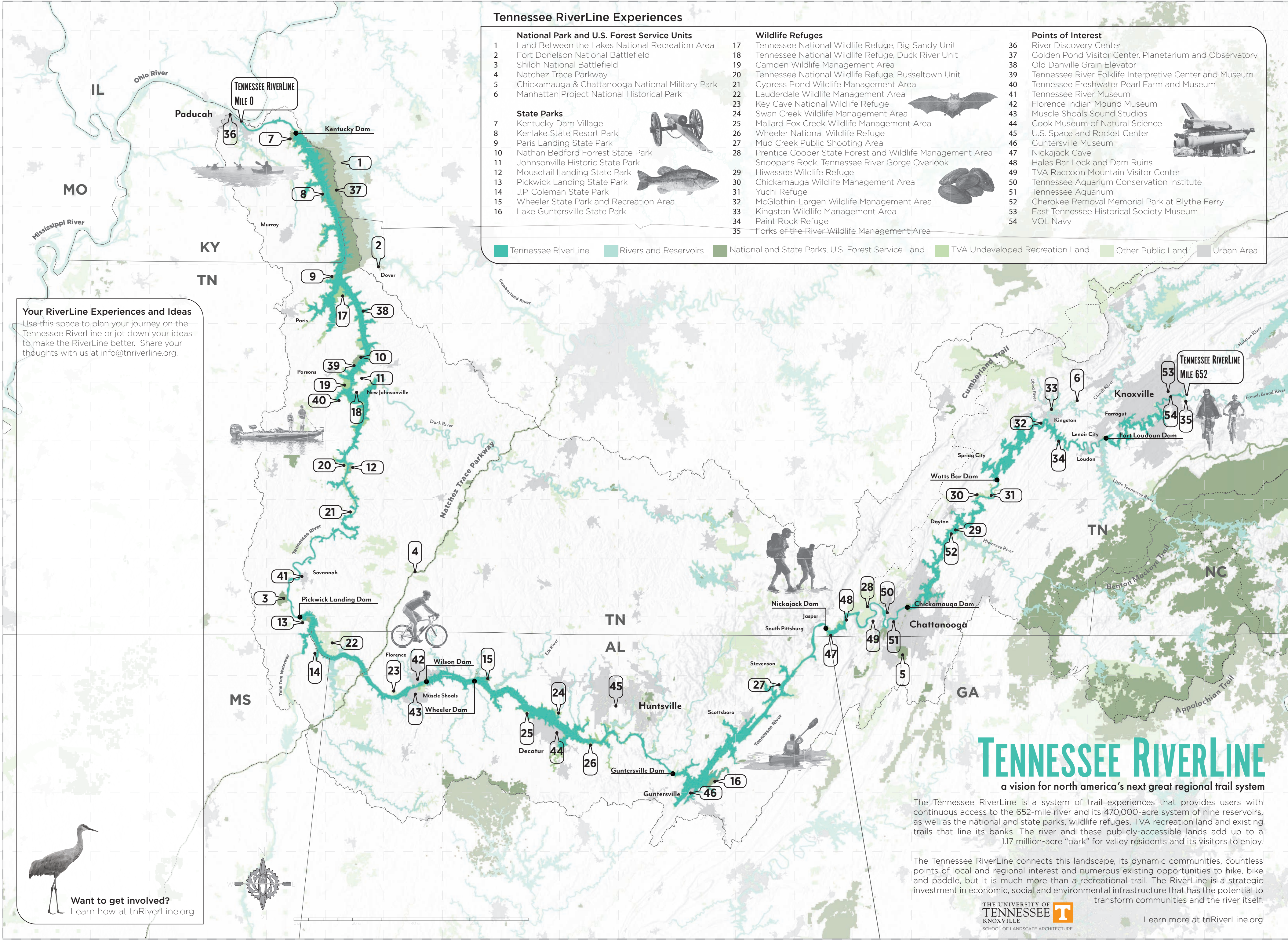
- National Park and U.S. Forest Service Units**
- 1 Land Between the Lakes National Recreation Area
 - 2 Fort Donelson National Battlefield
 - 3 Shiloh National Battlefield
 - 4 Natchez Trace Parkway
 - 5 Chickamauga & Chattanooga National Military Park
 - 6 Manhattan Project National Historical Park

- State Parks**
- 7 Kentucky Dam Village
 - 8 Kenlake State Resort Park
 - 9 Paris Landing State Park
 - 10 Nathan Bedford Forrest State Park
 - 11 Johnsonville Historic State Park
 - 12 Mousetail Landing State Park
 - 13 Pickwick Landing State Park
 - 14 J.P. Coleman State Park
 - 15 Wheeler State Park and Recreation Area
 - 16 Lake Guntersville State Park

- Wildlife Refuges**
- 17 Tennessee National Wildlife Refuge, Big Sandy Unit
 - 18 Tennessee National Wildlife Refuge, Duck River Unit
 - 19 Camden Wildlife Management Area
 - 20 Tennessee National Wildlife Refuge, Busselton Unit
 - 21 Cypress Pond Wildlife Management Area
 - 22 Lauderdale Wildlife Management Area
 - 23 Key Cave National Wildlife Refuge
 - 24 Swan Creek Wildlife Management Area
 - 25 Mallard Fox Creek Wildlife Management Area
 - 26 Wheeler National Wildlife Refuge
 - 27 Mud Creek Public Shooting Area
 - 28 Prentice Cooper State Forest and Wildlife Management Area
 - 29 Snooper's Rock, Tennessee River Gorge Overlook
 - 30 Hiwassee Wildlife Refuge
 - 31 Chickamauga Wildlife Management Area
 - 32 Yuchi Refuge
 - 33 McGlothlin-Largen Wildlife Management Area
 - 34 Kingston Wildlife Management Area
 - 35 Paint Rock Refuge
 - 35 Forks of the River Wildlife Management Area

- Points of Interest**
- 36 River Discovery Center
 - 37 Golden Pond Visitor Center, Planetarium and Observatory
 - 38 Old Danville Grain Elevator
 - 39 Tennessee River Folklife Interpretive Center and Museum
 - 40 Tennessee Freshwater Pearl Farm and Museum
 - 41 Tennessee River Museum
 - 42 Florence Indian Mound Museum
 - 43 Muscle Shoals Sound Studios
 - 44 Cook Museum of Natural Science
 - 45 U.S. Space and Rocket Center
 - 46 Guntersville Museum
 - 47 Nickajack Cave
 - 48 Hales Bar Lock and Dam Ruins
 - 49 TVA Raccoon Mountain Visitor Center
 - 50 Tennessee Aquarium Conservation Institute
 - 51 Tennessee Aquarium
 - 52 Cherokee Removal Memorial Park at Blythe Ferry
 - 53 East Tennessee Historical Society Museum
 - 54 VOL Navy

Tennessee RiverLine Rivers and Reservoirs National and State Parks, U.S. Forest Service Land TVA Undeveloped Recreation Land Other Public Land Urban Area



Your RiverLine Experiences and Ideas
Use this space to plan your journey on the Tennessee RiverLine or jot down your ideas to make the RiverLine better. Share your thoughts with us at info@tnriverline.org.

Want to get involved?
Learn how at tnRiverLine.org

TENNESSEE RIVERLINE

a vision for north america's next great regional trail system

The Tennessee RiverLine is a system of trail experiences that provides users with continuous access to the 652-mile river and its 470,000-acre system of nine reservoirs, as well as the national and state parks, wildlife refuges, TVA recreation land and existing trails that line its banks. The river and these publicly-accessible lands add up to a 1.17 million-acre "park" for valley residents and its visitors to enjoy.

The Tennessee RiverLine connects this landscape, its dynamic communities, countless points of local and regional interest and numerous existing opportunities to hike, bike and paddle, but it is much more than a recreational trail. The RiverLine is a strategic investment in economic, social and environmental infrastructure that has the potential to transform communities and the river itself.



Learn more at tnRiverLine.org

Tennessee RiverLine Partnership

The Tennessee RiverLine Partnership is a diverse group of river advocates committed to building a shared vision for the Tennessee RiverLine and stewarding it toward implementation.

This growing partnership, comprised of tourism professionals, scholars, planners, agency leaders and non-profit directors, is driven by the support of the following entities for the Tennessee RiverLine vision:

NATIONAL PARK SERVICE • THE NATURE CONSERVANCY • TENNESSEE VALLEY AUTHORITY • TENNESSEE RIVER VALLEY STEWARDSHIP COUNCIL • SOUTHEAST TENNESSEE TOURISM ASSOCIATION • UNIVERSITY OF TENNESSEE SCHOOL OF LANDSCAPE ARCHITECTURE • UNIVERSITY OF TENNESSEE, CHATTANOOGA, INTERDISCIPLINARY GEOSPATIAL TECHNOLOGY LAB • TENNESSEE DEPARTMENT OF HEALTH • TENNESSEE STATE PARKS • CITY OF KNOXVILLE • LOSE & ASSOCIATES • RIVER DISCOVERY CENTER (PADUCAH) • TENNESSEE AQUARIUM

www.tnRiverLine.org

info@tnRiverLine.org

4.5 million

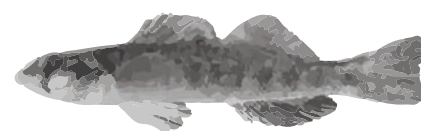
watershed residents

In Tennessee, Alabama, Mississippi and Kentucky, the 652-mile reach of the Tennessee River touches 31 counties and dozens of cities, towns and rural communities:

KNOXVILLE LOUISVILLE FARRAGUT LENOIR CITY
 LOUDON KINGSTON ROCKWOOD SPRING CITY
 DAYTON CHATTANOOGA SIGNAL MOUNTAIN JASPER
 KIMBALL SOUTH PITTSBURG • ALABAMA •
 BRIDGEPORT STEVENSON SCOTTSBORO LANGSTON
 GUNTERSVILLE HUNTSVILLE DECATUR ROGERSVILLE
 KILLEN FLORENCE MUSCLE SHOALS WATERLOO
 • MISSISSIPPI • EASTPORT IUKA • TENNESSEE • RED
 SULPHUR SPRINGS COUNCE CRUMP SAVANNAH
 SALTILLO CLIFTON PARSONS NEW JOHNSONVILLE
 JOHNSONVILLE BIG SANDY PARIS DOVER • KENTUCKY
 • MURRAY GRAND RIVERS CALVERT CITY PADUCAH



652 miles



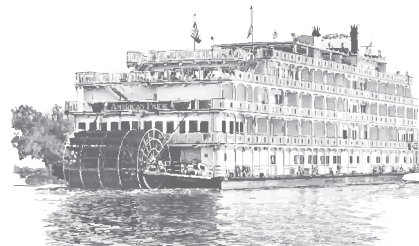
41,000 square mile watershed

of the most biodiverse regions globally

9 main-channel dams

1.17 million acres

between on-river reservoirs + TVA undeveloped recreation lands + state and federally-protected lands immediately adjacent to the river



STORIES WORTH TELLING

The Tennessee River Valley is home to some of our nation's most important histories, modern accomplishments and ecological treasures.

It was on the banks of the Tennessee River where the Cherokee Indians began their journey westward, forced from their ancestral lands by way of the Trail of Tears, a landscape that was later host to pivotal battles of the American Civil War.

The landscape of the Tennessee River is also home to important accomplishments of the Works Progress Administration, Civilian Conservation Corps and the monumental, multi-functional infrastructures of the Tennessee Valley Authority. The initiatives of the TVA helped change the course of world history and continue to shape the development of an entire region.

There are more fish, insects, mussels, snails and other forms of life in the Tennessee River and its tributary waterways than in any other river system in North America. More than 100 species of freshwater mussels and 270 species of fish call the Tennessee River system home, including threatened and endangered species, as well as species not found anywhere else in the world.

The stories of the Tennessee River are stories worth telling.

A RIVER AT RISK



Rivers are the foundations of our communities, sustaining populations and economies that have sought to tame and harness them over time. The Tennessee River Valley has become one of the most desirable places to live, work and play in the country. However, the demands that communities place on the river, coupled with a changing climate, threatens its future health and resiliency, and in turn our own.

Land use patterns along the river separates it from the communities it supports. This separation limits the public's ability to experience the river and witness its beauty, while the degradation of the river's banks and water quality compromises the health of its fragile ecosystems.

When our social consciousness and economies drift away from our river heritage, communities once intimately linked by this conduit of commerce, people and ideas stand to lose their sense of connection to one another, to the river and to their identity as part of something much larger: the Tennessee River Valley.

The great challenges of the river's present offer great opportunities for its future. By reintroducing the valley to its great river, the Tennessee RiverLine seeks to inspire new thinking amongst its many generations of committed stewards—both young and old—about our relationship with this valuable resource.

TENNESSEE RIVERLINE

A vision for a continuous system of multi-modal trail experiences along the Tennessee River from Knoxville, TN, to Paducah, KY, that...



celebrates the beauty, diversity and history of the Tennessee River Valley



connects the people and communities of the valley to each other, to their river heritage and to the Tennessee River landscape



catalyzes new investments, economic opportunity, social health and ecological stewardship

A TRAIL LIKE NO OTHER

The Tennessee RiverLine is unlike any other trail system of similar length. It will connect and expand access to the Tennessee River Valley's scenic public lands, including those managed by the Tennessee Valley Authority, the U.S. Forest Service, U.S. Fish and Wildlife Service, state parks and local governments. The project also interfaces deliberately and strategically with the landscapes where 21st century challenges posed to the vitality of the river system manifest; it is in these landscapes where the opportunities to mitigate or overcome those same challenges can be found.

Initial stretches of the Tennessee RiverLine will be comprised of existing trails, greenways and blueways whose communities agree to be identified as part of the larger trail system.

Investments in new recreational trails and multi-modal transportation routes, as well as shared use agreements with public and private property owners fill trail system gaps. Reinvestment in existing trails, greenways and blueways will enhance user safety, experience and connection to the Tennessee River landscape.



From Knoxville to Paducah, the Tennessee River stretches 652 miles and touches four states: Tennessee, Alabama, Mississippi and Kentucky. Its 41,000-square mile watershed is home to more than 4.5 million residents, over half of whom live in communities along its banks.

The Tennessee River, its tributary system and its contributing watershed form a diverse territory defined by celebrated and iconic landscapes. High mountains, rolling hills and gentle valleys, highland rims and coastal plains bid the river passage from its origin in East Tennessee to its confluence with the Ohio River in Western Kentucky.

A river of such splendor deserves to be seen and experienced by all. The Tennessee River, as one of North America's great rivers, merits the development of a great river trail.

[f](https://www.facebook.com/tennesseeriverline) [tennesseeriverline](https://www.facebook.com/tennesseeriverline) www.tnRiverLine.org
[@tennesseeriverline](https://www.instagram.com/tennesseeriverline) info@tnRiverLine.org



a vision for north america's next great regional trail system