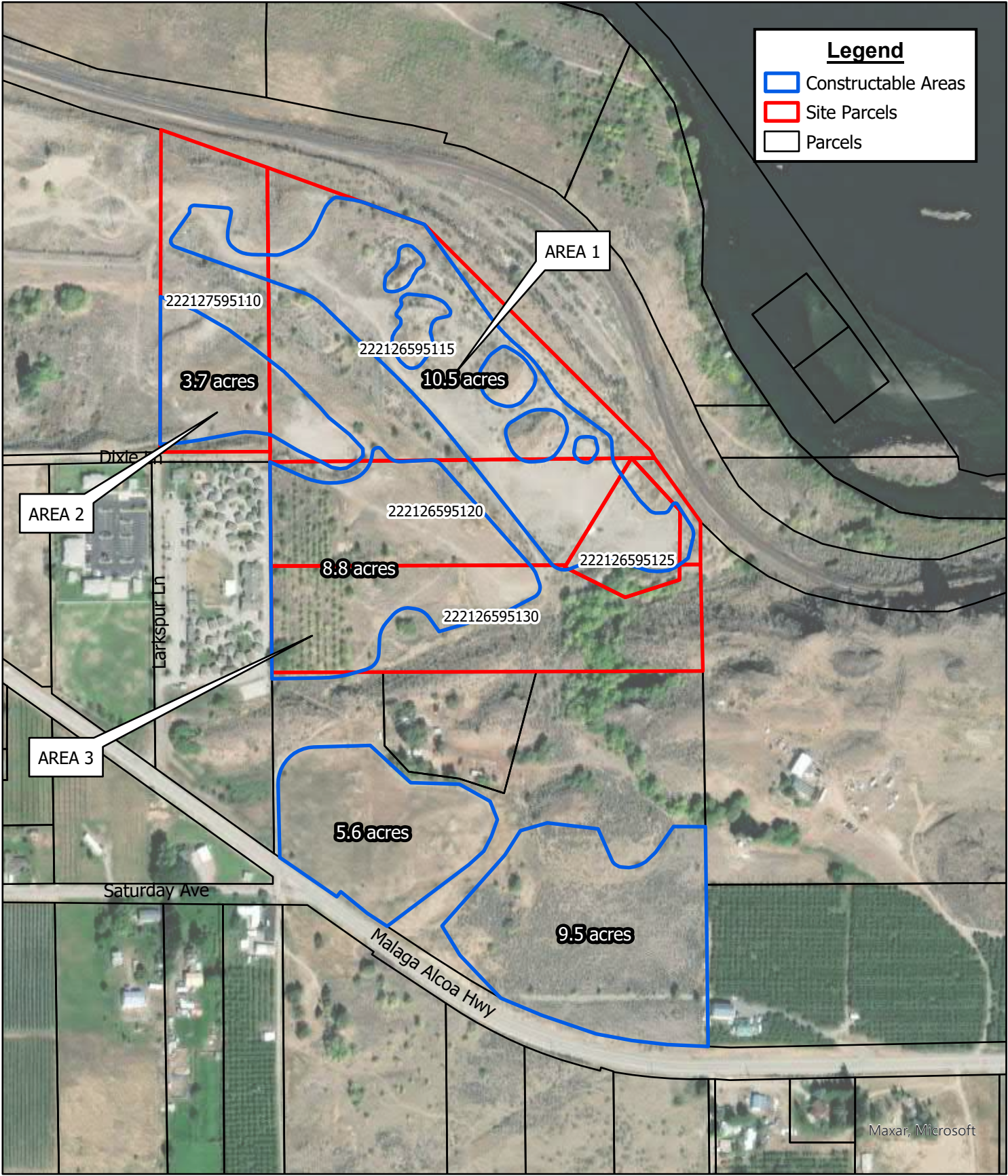


Legend

- Constructable Areas
- Site Parcels
- Parcels



J:\DATA\RA\20-0026-19\GIS\LOJO COOLING MAPPING.APRX BY: ANEFF PLOT DATE: JUL 17, 2023 COORDINATE SYSTEM: NAD 1983 2011 STATEPLANE WASHINGTON NORTH FIPS 4601 FT US

RH2

NORTH

1 inch : 400 Feet

0 100 200 400 Feet

DRAWING IS FULL SCALE WHEN BAR MEASURES 2"

CHELAN DOUGLAS Regional Port AUTHORITY

Exhibit 1

Constructable Areas

CDRPA

Cooling Water Site

Vicinity Map

ESTIMATED HERE, Garmin
USGS, EPA, NPS

This map is a graphic representation derived from the Chelan Douglas Regional Port Authority (Port) Geographic Information System. It was designed and intended for Port staff use only; it is not guaranteed to survey accuracy. This map is based on the best information available on the date shown on this map.

Any reproduction or sale of this map, or portions thereof, is prohibited without express written authorization by the Port.

This material is owned and copyrighted by the Port.

Maxar, Microsoft