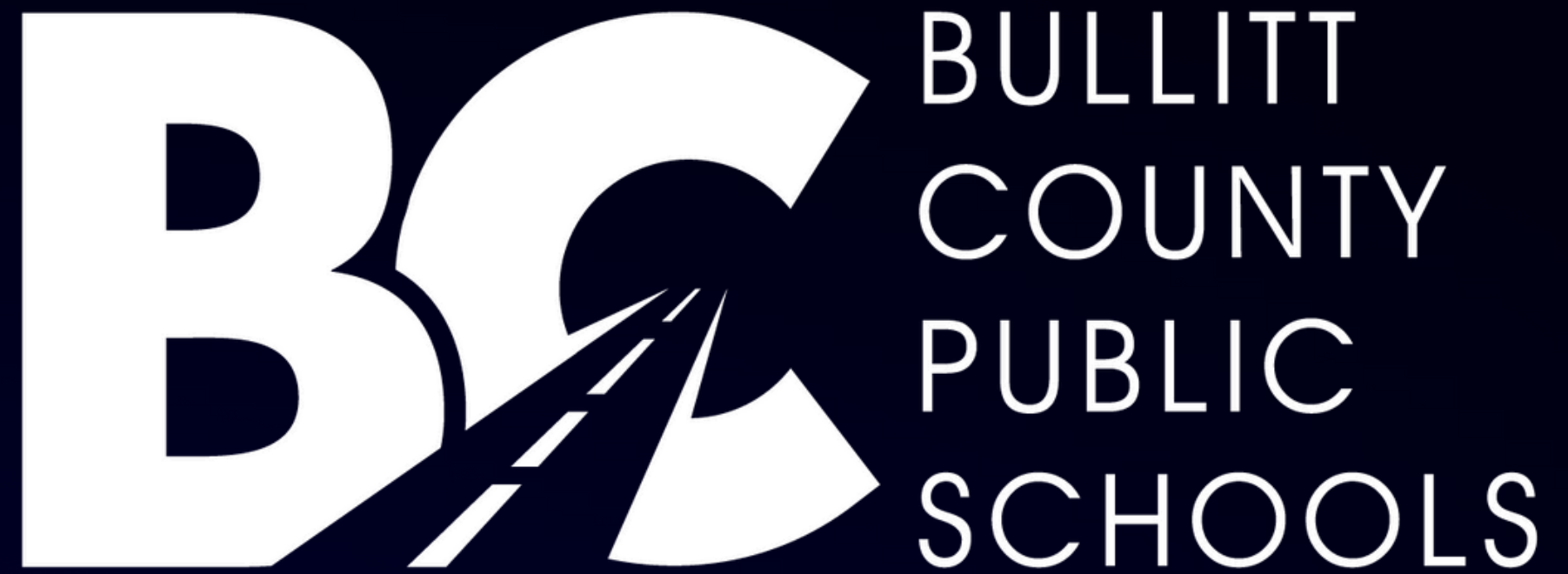




District Realignment Proposal

Bullitt County Public Schools



Demographic Study: Transfinder's Comprehensive Process

01

Current Data Analysis

Developed comprehensive boundary plans using current BCPS student enrollment data, ensuring all decisions are grounded in accurate, up-to-date information about our student population and school capacity.

02

Multiple Option Development

Provided three distinct boundary scenarios at each grade level, giving district leadership flexibility to choose the option that best serves our community's unique needs and priorities.

03

Future Projections

Incorporated five-year demographic projections for each option, ensuring our decisions account for anticipated growth and changes in our community's student population.

04

Development Impact Assessment

Included comprehensive review of new student growth from planned housing developments, ensuring our boundary changes can accommodate future residential expansion.

Strategic Rationale for Realignment



Balancing Capacity and Feeder Pattern Consistency

Ensures school populations are distributed efficiently across the district, preventing overcrowding in high-growth schools while optimizing underutilized facilities. This strategic approach maximizes our investment in educational infrastructure and maintains quality learning environments. We aligned school assignments with established neighborhood boundaries



Transportation Efficiency

Optimizes bus routes to reduce travel time, improve efficiency, and lower operational costs. Students spend less time commuting and more time learning, while the district realizes cost savings that can be reinvested in educational programs.



Community Growth Management

Proactively adjusts to demographic shifts and new housing developments, maintaining a balanced and sustainable school system that can adapt to our community's evolving needs over time.

District Growth



Grandfathering Option

At BCPS, we know that many families are intentional when they chose their residence, and we also recognize the pride and sense of belonging students feel in their current school community. To help honor those commitments and provide stability, we are allowing currently enrolled students to remain at their existing school if families choose, even if their home address falls outside the new boundary. This “grandfathering” option helps minimize disruptions to friendships, routines, and academic progress while respecting the strong connections families have already built.

This applies to children not yet enrolled in school.

Families will have to provide their own transportation and students are held accountable to grades, behavior and attendance.



Following Board Approval

- Families receive notification of realignment via electronic communication and mailed letters. The transfer application and detailed explanation of the process is included in the communication.
- District launches communication and Realignment Hub on main BCPS Page: Video message from Dr. Bacon, Hotline, Realignment FAQs, Street Finder
- Transfer Windows
 - Transfer Window #1: Families Impacted by Realignment: September 23 - October 31
 - Transfer Window #2 : Other In-District Transfers and Current Approved Non-Residents Already Enrolled: December 1 - July 31
 - December 1 - January 15 (Students accepted count toward staffing #s.)
 - January 16 - July 31 (Students accepted are not counted toward staffing #s.)
 - Transfer Window #3: New Out of District and Non-Resident Transfers
 - March 9th is the 1st day this window opens and it runs through the 26-27 school yr.

Initial School Status Summary

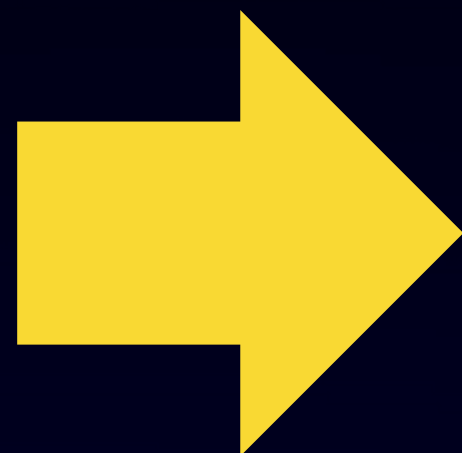


ZMS

NES

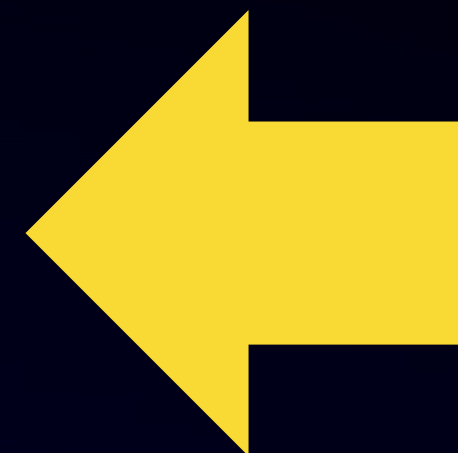
Green

7



Yellow

10



BEHS

EMS

PGES

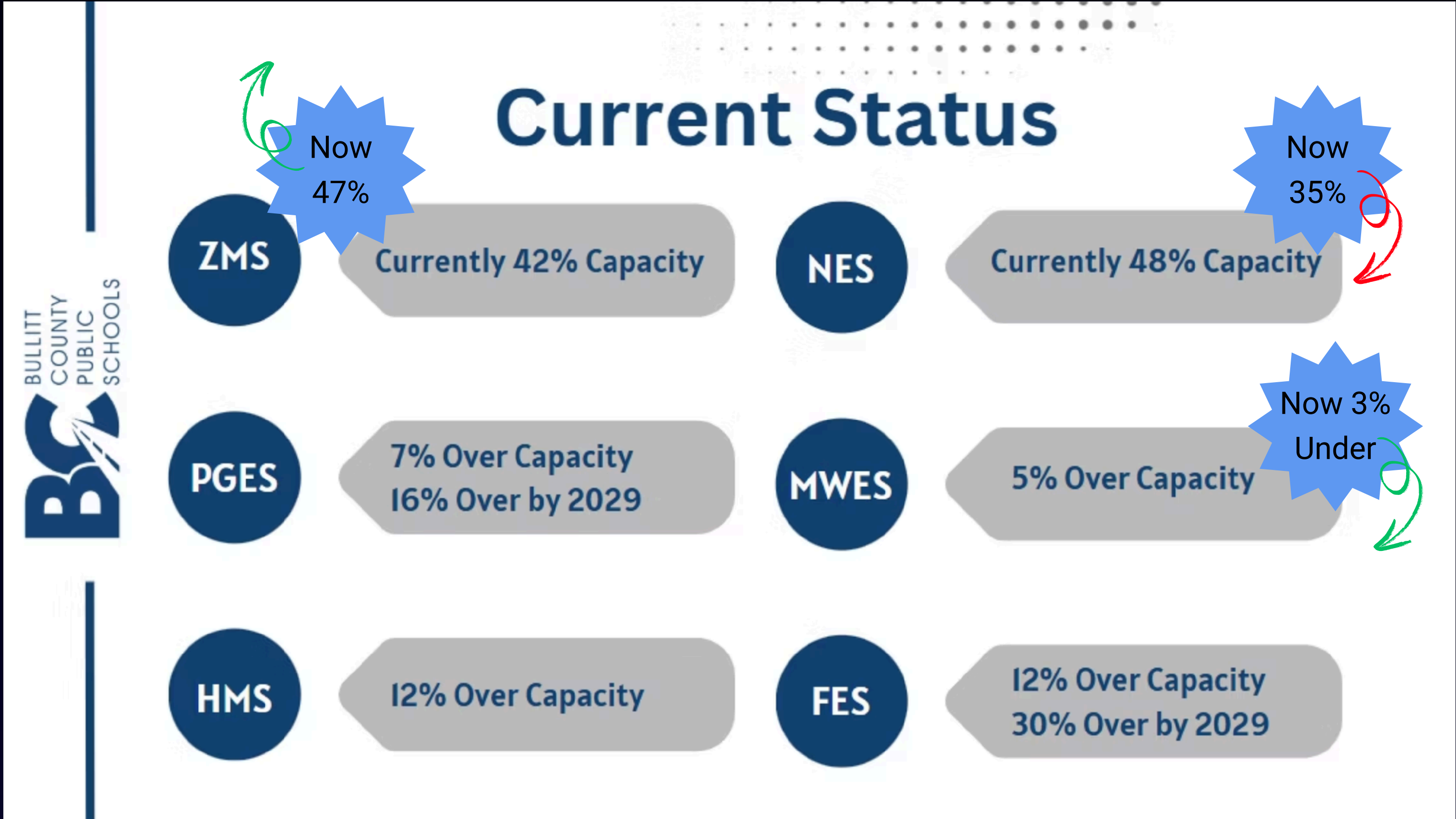
HMS

FES

Red

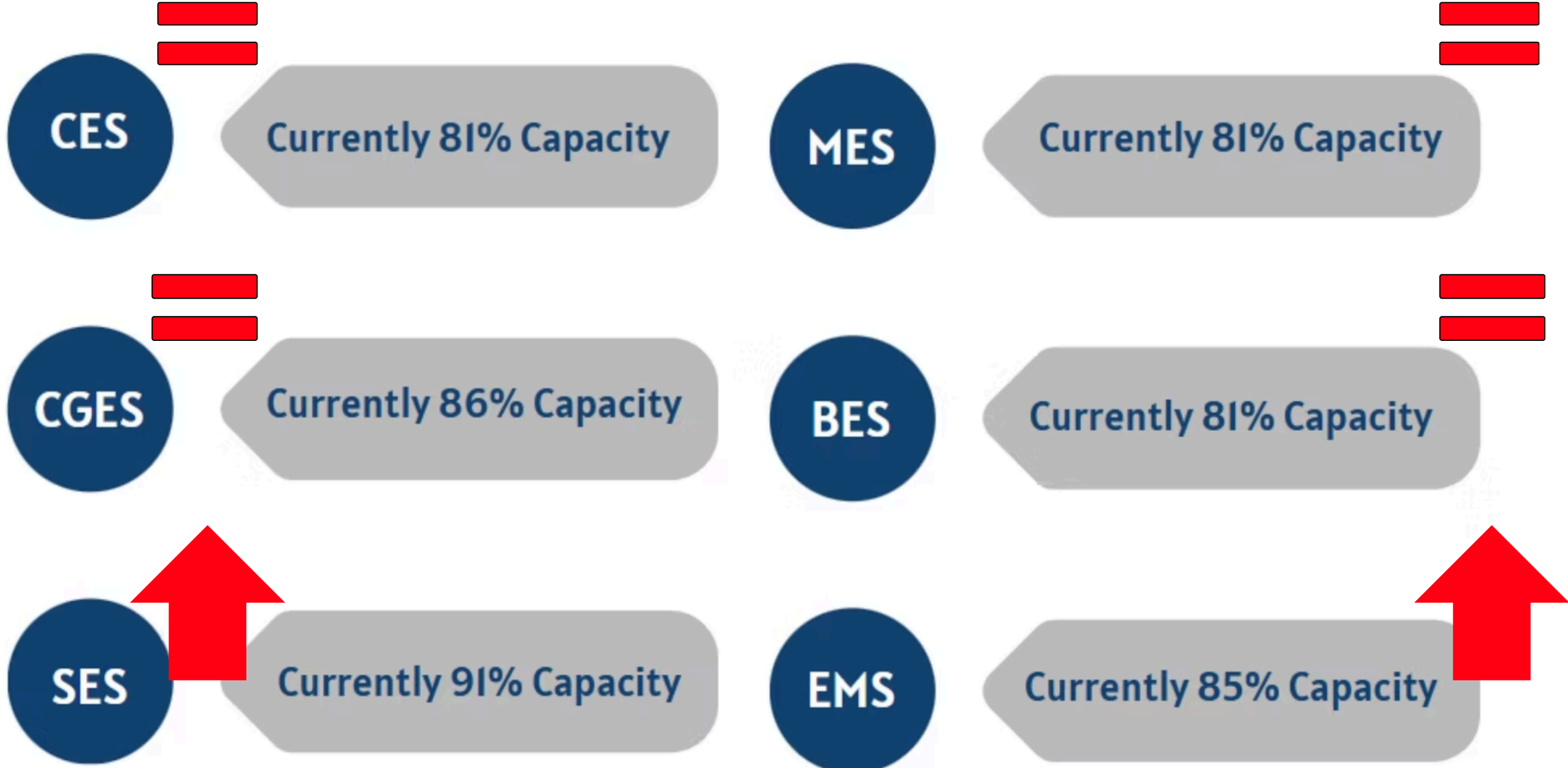
5

Implementation Status Overview, Then (Oct. 2024) vs. Now



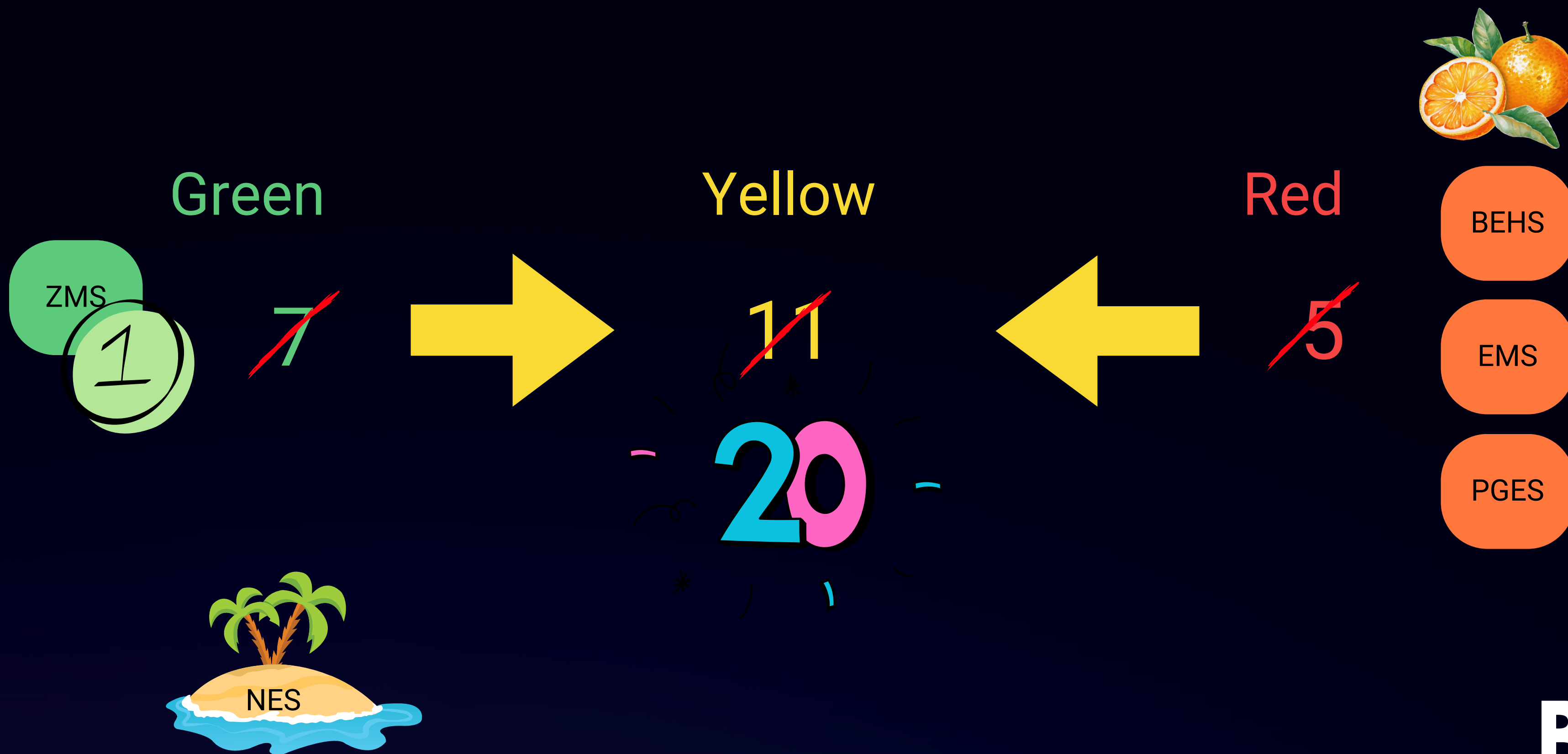
Implementation Status Overview, Then (Oct. 2024) vs. Now

Current Status



Side Note:
Other Schools Are
Trending YELLOW

Post Realignment Status Projection



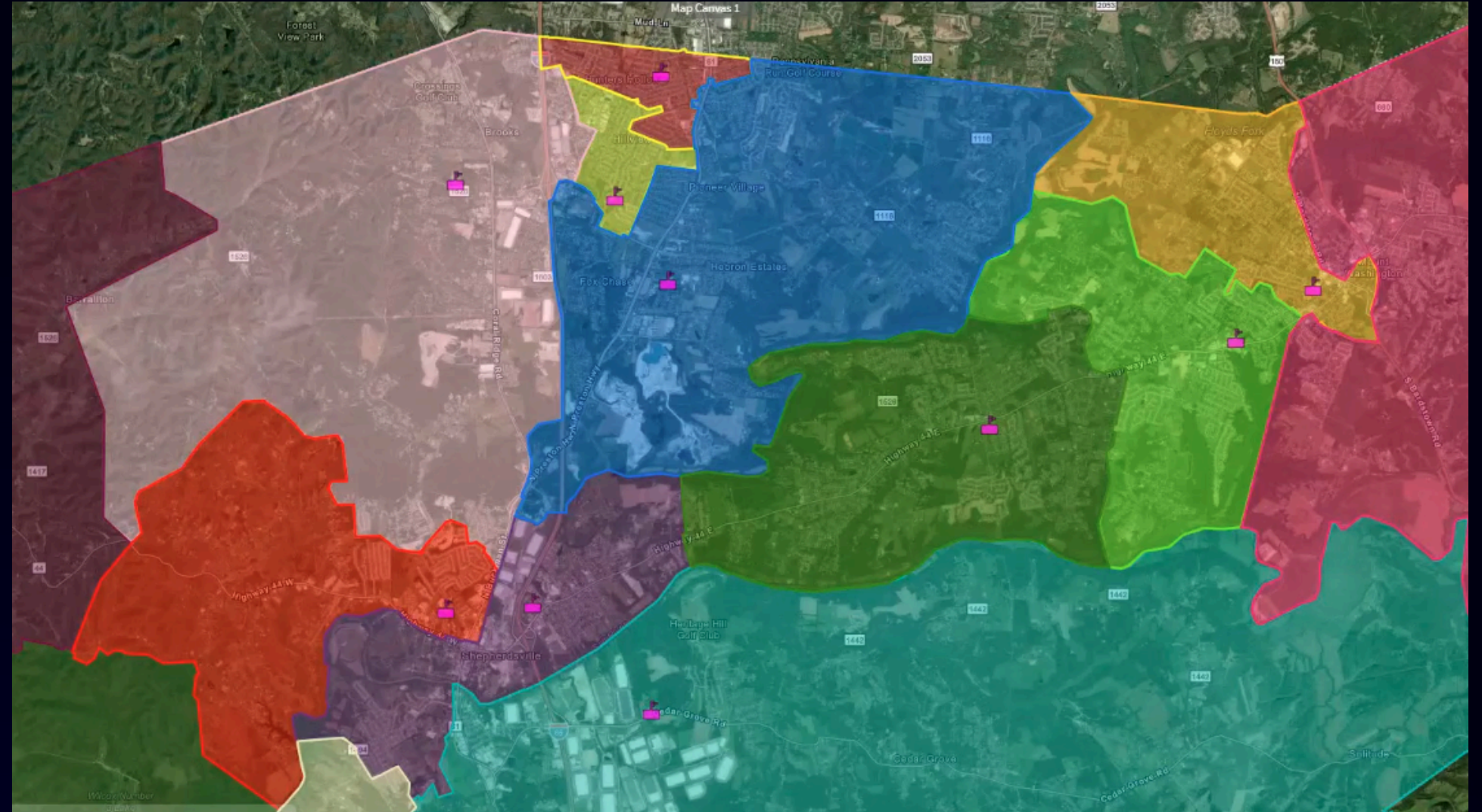
Schools With No Major Shifts

- Crossroads Elementary
- Mt. Washington Elementary
- Lebanon Junction Elementary
- Cedar Grove Elementary
- Old Mill Elementary
- Bernheim Middle
- Mt. Washington Middle



Key Neighborhoods Impacted

- Lazy River / St. Andrews Crossing
- Grand Oaks / Round Rock
- Sanctuary of Mallard Lake
- Tanyard Springs
- Miller's Crossing



Key Neighborhoods Impacted: Lazy River/ St. Andrews Crossing / Hwy 44

Specific student movements include:

70+ students moving from Bullitt East High School to Bullitt Central High School.

60+ students moving from Eastside Middle School to Bullitt Lick Middle School.

90+ students moving from Pleasant Grove Elementary School to Roby Elementary School.



Key Neighborhoods Impacted: Miller's Crossing and West of Bells Mill

Specific student movements include:

30+ students moving from Bullitt East High School to North Bullitt High School.

20+ students moving from Eastside Middle School to Hebron Middle School.

40+ students moving from Pleasant Grove Elementary School to Freedom Elementary School.

English Mills remains in the east feeder pattern.



Key Neighborhoods Impacted: Grand Oaks / Round Rock

Specific student movements include:

60+ students moving from Hebron Middle School to Zoneton Middle School.

200+ students moving from Freedom Elementary School to Overdale Elementary School. (Note: OES will have students shift to MES)

Impacted students still stay in North Bullitt High School pattern

This change is primarily designed to establish Freedom Elementary as a single feeder school to Hebron, ensuring a more streamlined academic pathway.



Key Neighborhoods Impacted: Sanctuary Mallard Lake

Specific student movements include:

5+ students moving from Bullitt Central High School to North Bullitt High School.

10+ students moving from Bullitt Lick Middle School to Hebron Middle School.

14+ students moving from Shepherdsville Elementary School to Brooks Elementary School.

This realignment shifts students from central to north region. Of these, **10 students** are already transfers, leaving **very few students** directly impacted, and this accounts for future growth in this neighborhood



Key Neighborhoods Impacted: Tanyard Springs

Specific student movements include:

55+ Moving from Overdale Elementary School to Maryville Elementary School.

0 Moving in or out of Zoneton Middle School.

0 Moving in or out of North Bullitt High School.

This shift only impacts elementary students. Middle and high school students remain in the Zoneton Middle School and North Bullitt High School feeder pattern.

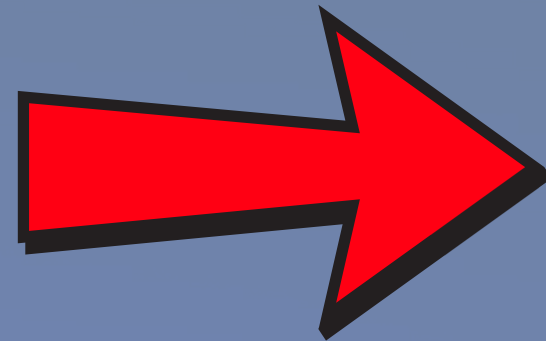


Another Key Shift



HEBRON
MIDDLE SCHOOL

**DISCOVERY
SCHOOL**



No program or
staffing changes



ZONETON
MIDDLE SCHOOL

Hebron is one of our **RED** schools and Zoneton is one of our **GREEN** schools.

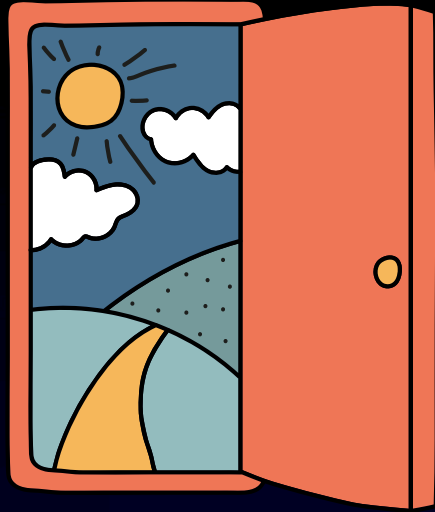


NICHOLS
= ELEMENTARY SCHOOL =

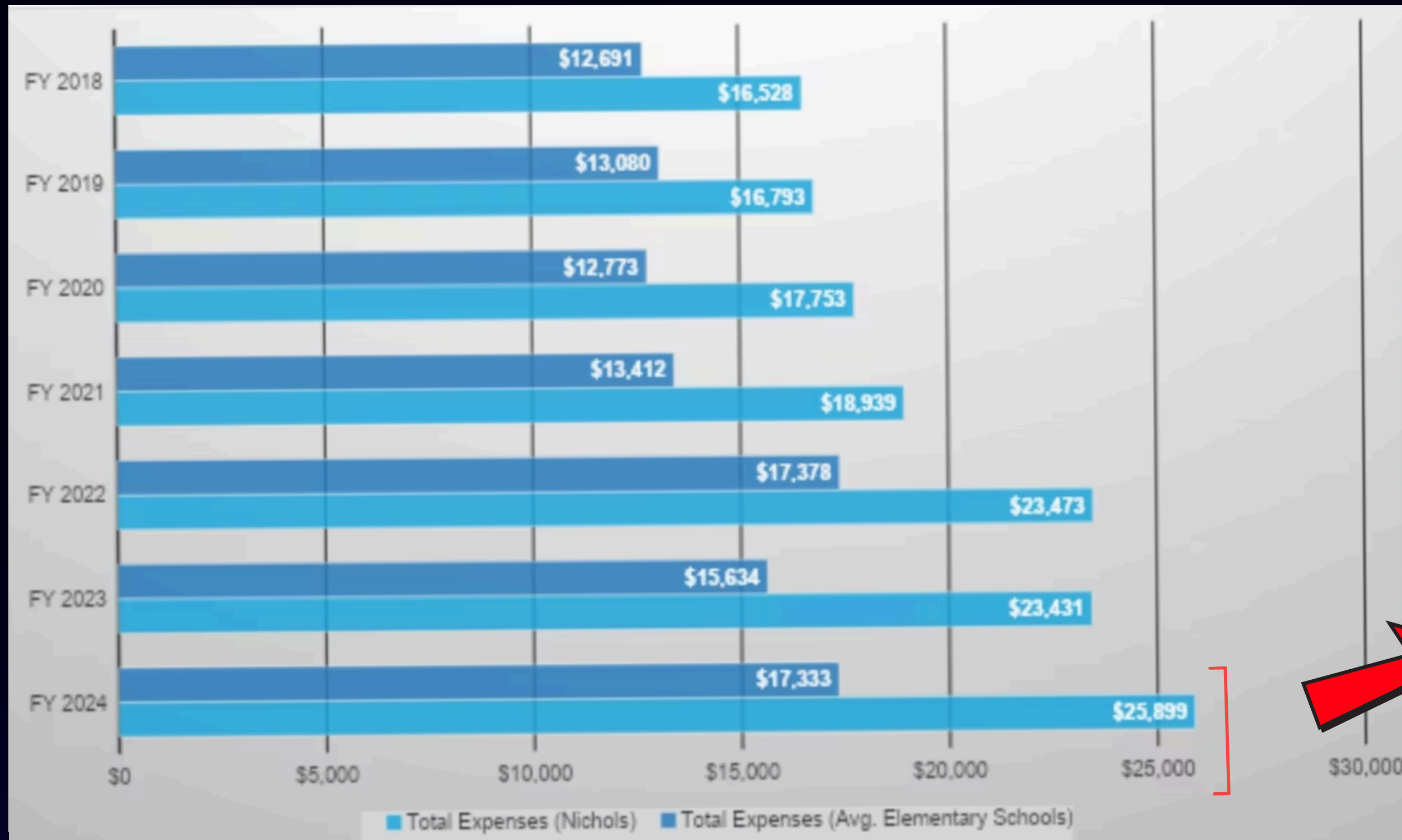


We Must to Open Doors to New Possibilities

- **Special Areas and Extra Curricular Activities:** Only 1.5 Special Areas at school (Half Time PE) and 1 full-time staff member takes care of Art, Music, and STEM. One half-time Librarian also serves as Instructional Coach. **Currently offers:** STLP, Chess, Yearbook, Archery, Track, Energy Team. **Students are not offered:** Academic Team, Robotics, Basketball (Boys or Girls), Plays/Theatrical Productions. Low participation numbers do not allow for an assistant archery coach.
- **Preschool:** Due to low and decreasing numbers, preschool students currently attend at another school. The very limited number of children that would participate in a preschool program at Nichols also experience the same limited environment with regard to socialization and exposure as that listed for students with disabilities.
- **Special Education:** The incredibly small size of Nichols (class, school and community size) limits the opportunities students with disabilities, particularly students with Autism, have for socialization within the school and community, as well as exposure to larger class sizes. Nichols is not equipped to house a program for students with Moderate to Severe Disabilities. Students needing this level of support are sent to other schools.



Elementary School Per Pupil Spending



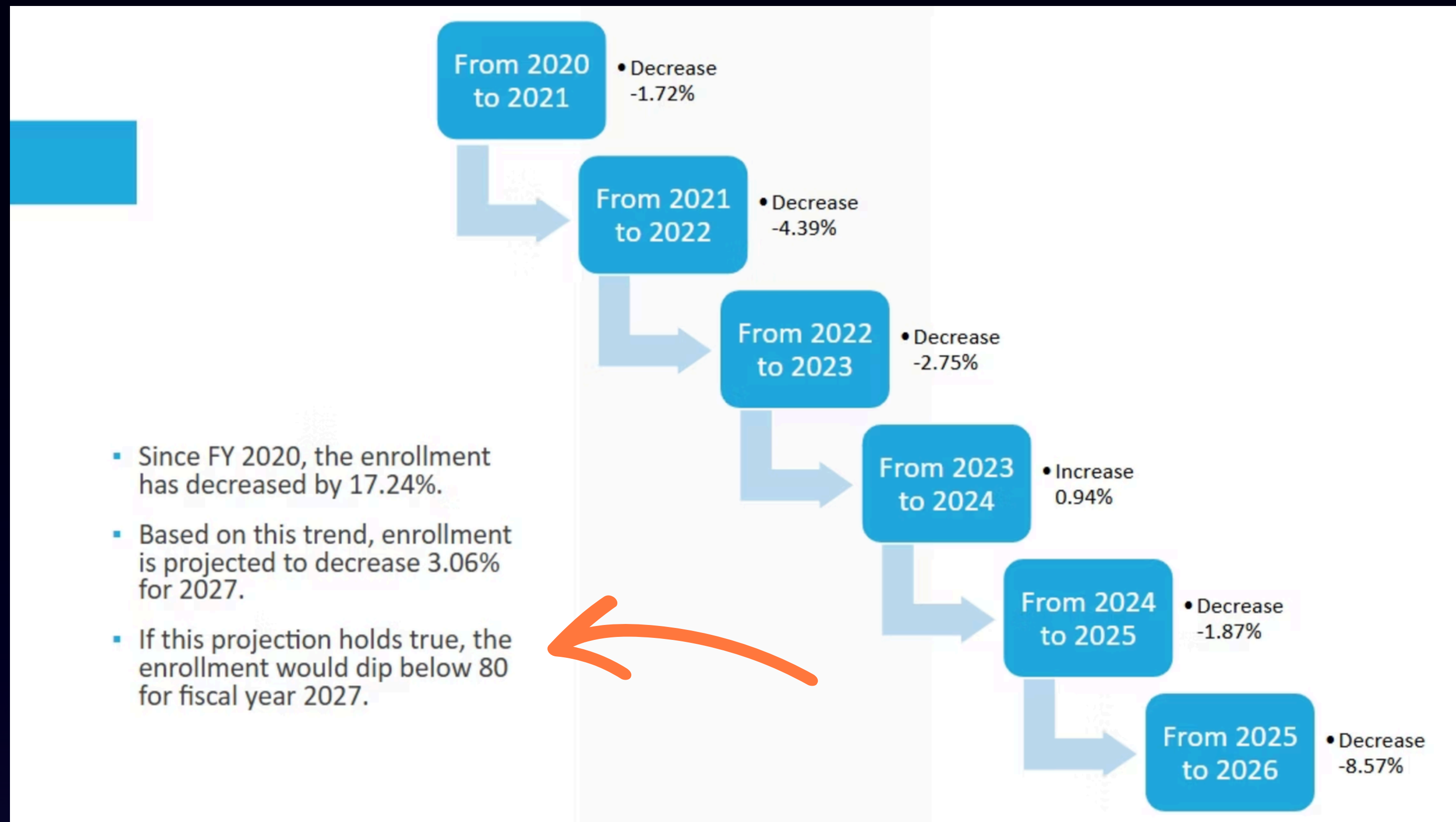
2024 Spending Per Pupil

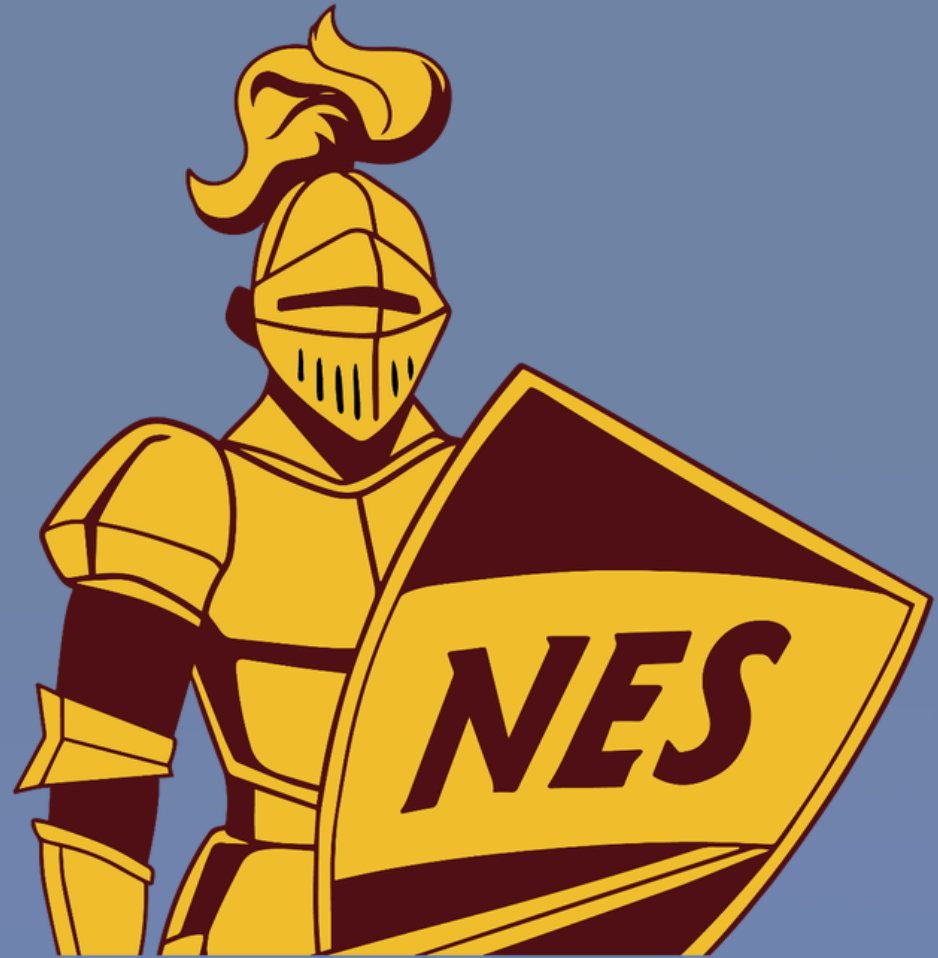
BCPS Average - \$17,334

Nichols Average - \$25,899

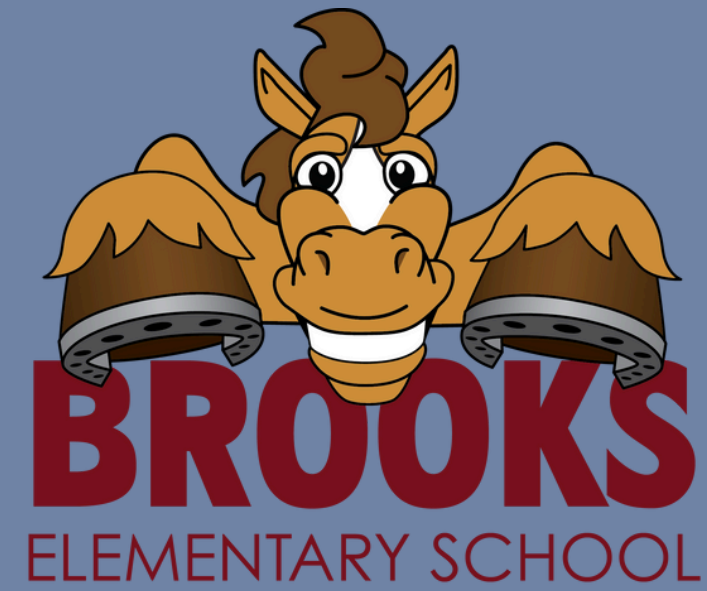
**\$8,565 Difference
Per Pupil**

Nichols Elementary Enrollment Trends





NICHOLS
== ELEMENTARY SCHOOL ==



HEBRON
MIDDLE SCHOOL



NORTH BULLITT
High School

The New Possibilities

This transition will directly and immediately benefit every student in numerous ways:

- **Expanded Extracurricular Horizons:** Students will have the chance to join established and thriving programs that NES cannot staff or support at its current size. This includes exciting opportunities to discover new passions and skills in Academic Team, Archery, Robotics, and Basketball. These activities foster teamwork, critical thinking, and confidence outside the traditional classroom.
- **A Broader Community of Peers:** A larger school community allows for greater social integration, friendship-building, and exposure to diverse perspectives. Students will have the chance to learn and grow with a wider circle of classmates, preparing them for the collaborative environments they will encounter in middle school, high school, and beyond.
- **Dedicated, Full-Time Special Area Teachers:** By joining a larger school, students will benefit from having full-time teachers for art, music, physical education, and library sciences. This ensures consistent, high-quality instruction in these critical areas that are essential for developing well-rounded, creative, and healthy children.

Strengthening Our Professional Community for Better Student Outcomes

- **A Place for Everyone:** All current staff, certified and classified, will be guaranteed employment elsewhere in the district.
- **Empowering Teacher Collaboration:** At NES, our six classroom teachers are deeply committed, but their small number prevents them from engaging in grade-level Professional Learning Communities (PLCs). PLCs are the bedrock of modern educational excellence, allowing teachers in the same grade to plan together, analyze student data, and share effective strategies. At their new school(s), our teachers will join these collaborative teams, leading to more innovative teaching and better, more consistent academic outcomes for every child.
- **Focused Administrative Leadership:** The principal of NES also serves as the District Preschool Coordinator, overseeing more than 300 students across 12 sites. This transition will allow our district leadership to focus their efforts more effectively, ensuring all programs, from preschool to 5th grade, receive the dedicated attention they require.

Map Comparison

