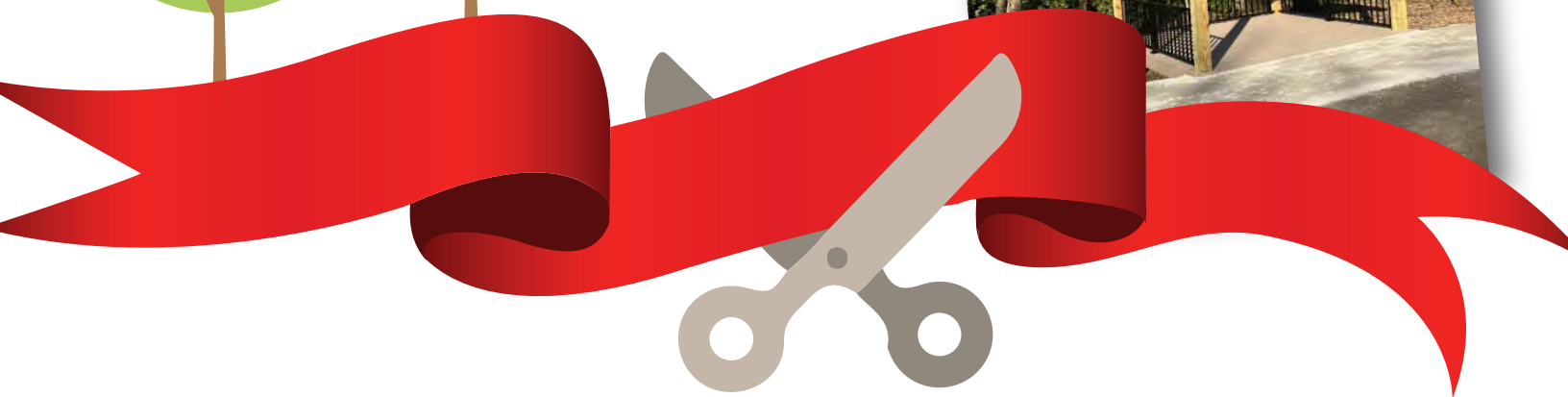
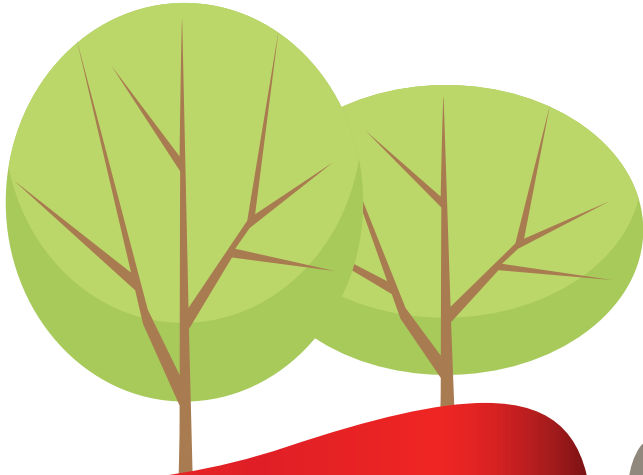




*Plan to attend the -*

# **RIBBON CUTTING FOR THE NEW SHELTER AT THE INTERURBAN TRAIL!**



The Springfield Park District and the Springfield Parks Foundation is excited to announce that we will cut the ribbon to a new shelter at the Interurban Trail. The new 10'x10' shelter is an improvement that will enhance the experience of families children, and community members using the Interurban Trail.

*Come test out the new shelter with us!*

## **Wednesday- April 26th at Noon**

**Interurban Trail, Springfield IL | 1629 Woodside Rd | GPS 39.7203738, -89.6803615**

Find your **FUN**, find your *smile* at [springfieldparks.org](http://springfieldparks.org)