

PRAIRIE HEIGHTS CONDOMINIUM

A CONDOMINIUM PLAT

LOT 1 OF CERTIFIED SURVEY MAP NO. 9171, RECORDED IN VOLUME 57 OF CERTIFIED SURVEY MAPS, ON PAGES 295-299, AS DOCUMENT No. 3069277, LOCATED IN PART OF THE SOUTHWEST QUARTER OF THE SOUTHEAST QUARTER OF SECTION 22, TOWNSHIP 06 NORTH, RANGE 08 EAST, CITY OF VERONA, DANE COUNTY, WISCONSIN.

LEGEND

- GOVERNMENT CORNER
- PARCEL BOUNDARY
- RIGHT-OF-WAY LINE
- CENTERLINE
- SECTION LINE
- PLATTED LOT LINE
- SETBACK LINE
- EASEMENT LINE
- CONCRETE CURB & GUTTER
- EDGE OF PAVEMENT
- UNIT LINE
- CONCRETE PAVEMENT

NOTES

1. BEARINGS FOR THIS SURVEY AND MAP ARE REFERENCED TO GRID NORTH OF THE WISCONSIN COUNTY COORDINATE SYSTEM, DANE COUNTY, THE WEST LINE OF THE SOUTHEAST QUARTER OF SECTION 22-06-08, BEARS N00°26'06"E.
2. FIELD WORK PERFORMED BY JSD PROFESSIONAL SERVICES, INC. ON DECEMBER 09 AND 10, 2021.
3. ALL AREAS AND FEATURES OF THE CONDOMINIUM ARE COMMON ELEMENTS UNLESS OTHERWISE NOTED AS LIMITED COMMON ELEMENTS OR UNITS.
4. BUILDING PLANS AND DIMENSIONS PROVIDED BY ARCHITECTURAL DESIGN CONSULTANTS, INC.
5. ALL AREAS DEPICTED ON THE CONDOMINIUM PLAT AS LIMITED COMMON ELEMENTS SHALL BE GOVERNED BY THE TERMS AND CONDITIONS OF THE DECLARATION.
6. SIDEWALKS ARE LIMITED COMMON ELEMENTS AS NOTED ON THE PLAT.
7. SEE SHEET 2 FOR UNIT DETAILS.

SURVEYOR'S CERTIFICATE

I HEREBY CERTIFY THAT, IN COMPLIANCE WITH CHAPTER 703.11 OF WISCONSIN STATUTES, THE CONDOMINIUM PLAT SHOWN HEREON IS A CORRECT REPRESENTATION OF THE PLAT DESCRIBED AND FURTHER THAT THE BUILDING LOCATIONS HAVE BEEN FIELD VERIFIED AND THE FLOOR PLANS ARE REPRODUCED FROM PLANS FURNISHED BY THE DECLARANT'S ARCHITECT AND THAT THE IDENTIFICATION AND LOCATION OF EACH UNIT AND THE COMMON ELEMENTS CAN BE DETERMINED FROM THE PLAT.

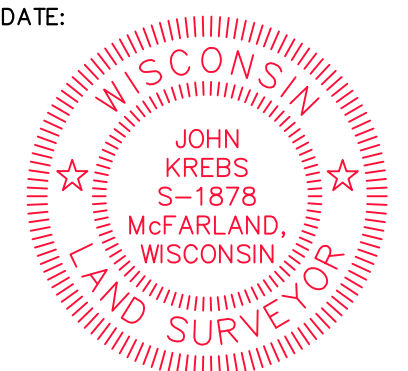
JOHN KREBS, P.L.S. S-1878
WISCONSIN PROFESSIONAL LAND SURVEYOR

DATE:

THESE ARE NO OBJECTIONS TO THIS CONDOMINIUM WITH RESPECT TO SECTION 703 WISCONSIN STATUTES AND IS HEREBY APPROVED FOR RECORDING.

DATED THIS _____ DAY OF _____ 2022

DANE COUNTY PLANNING AND DEVELOPMENT



SURVEYED FOR:

BLUE RIDGE MADISON, LLC
4698 SUNSET RIDGE DRIVE
MIDDLETON, WI 53562

SURVEYED BY:

JSD PROFESSIONAL SERVICES, INC.
161 HORIZON DRIVE, SUITE 101
VERONA, WISCONSIN 53593
(608) 848-5060

OFFICE OF THE REGISTER OF DEEDS

_____ COUNTY, WISCONSIN

RECEIVED FOR RECORD _____

2022 AT _____ O'CLOCK _____ M AS

DOCUMENT # _____

IN VOL. _____ OF CONDOMINIUM

PLATS ON PAGE(S) _____

REGISTER OF DEEDS

PROJECT LOCATION:
SECTION 22
TOWNSHIP 06 NORTH
RANGE 08 EAST
CITY OF VERONA
DANE COUNTY, WI



CREATE THE VISION TELL THE STORY

jsdinc.com

PRAIRIE HEIGHTS CONDOMINIUM

PROJECT NO: 21-10967 DRAWN BY: JK INITIAL SUBMITTAL DATE: JUNE 3, 2022

FIELDBOOK/PG: - CHECKED BY: - REVISION RESUBMITTAL DATE: -

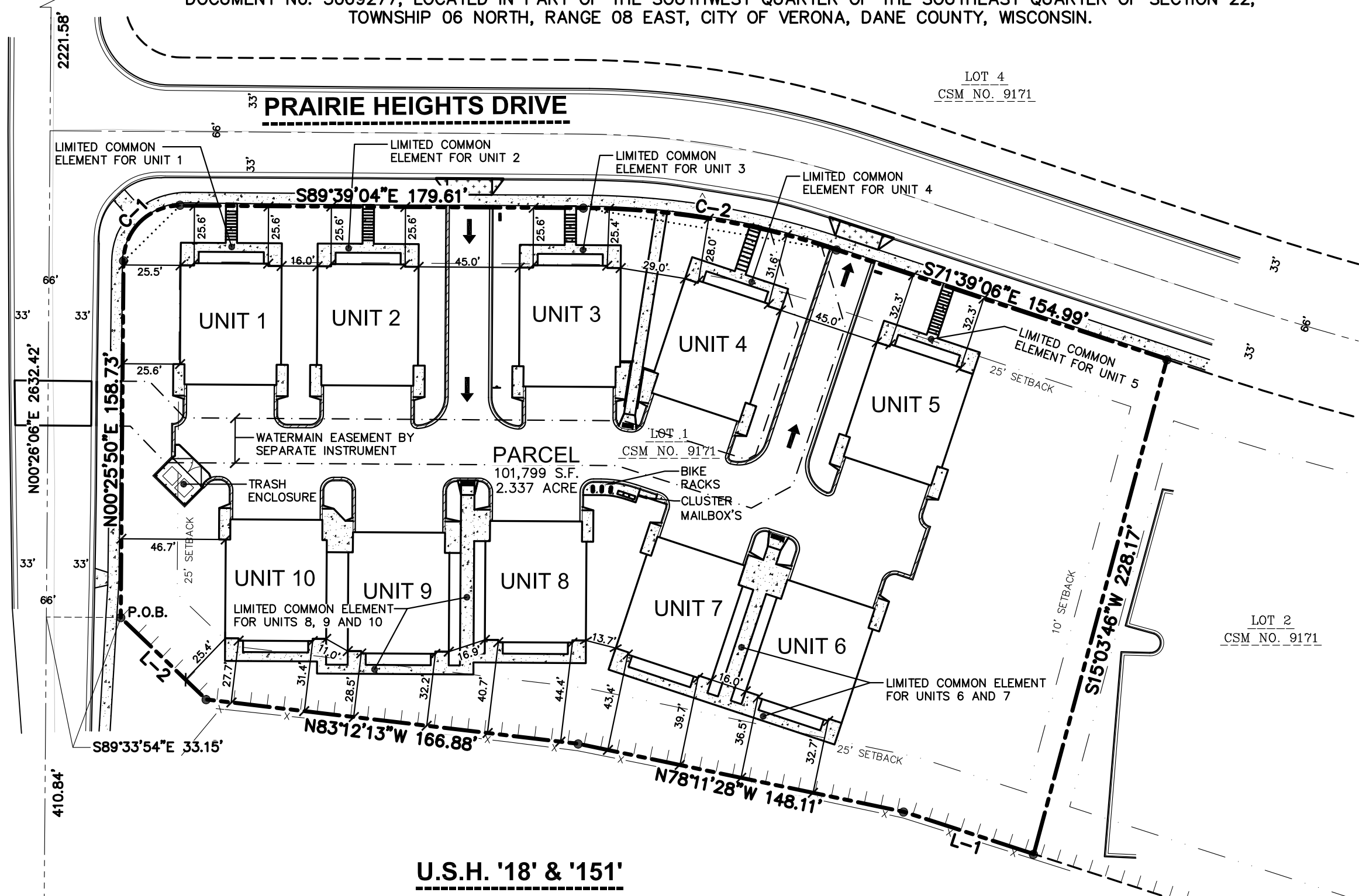
SURVEYED BY: - APPROVED BY: TMJ REVISION RESUBMITTAL DATE: -

SHEET 1 OF 2

CENTER CORNER OF SECTION 22, T06N, R08E FOUND ALUMINUM D.O.T. MONUMENT

LOCUST DRIVE

LOT 1
CSM NO. 6671



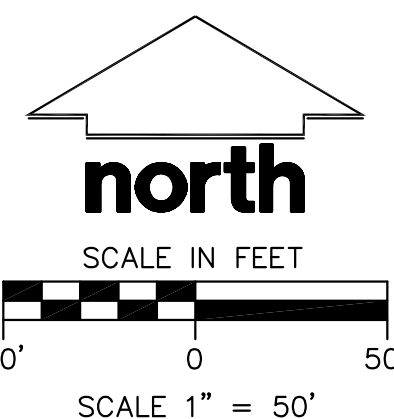
U.S.H. '18' & '151'

LINE TABLE

LINE	BEARING	DISTANCE
L-1	N71°59'21"W	60.80'
L-2	N46°14'23"W	52.71'

CURVE TABLE

CURVE	LENGTH	RADIUS	DELTA	CHORD BEARING	CHORD
C-1	39.28'	25.00'	90°00'54"	N45°25'50"E	35.36'
C-2	114.77'	367.00'	17°55'02"	S80°36'38"E	114.30'



SOUTH QUARTER CORNER SECTION 22, T06N, R08E MONUMENT NOT FOUND

DRAFT