

*Legacy*  
BUSINESSES

25

YEARS OR MORE

TULSA PEOPLE CELEBRATES

# Legacy Businesses that have made their mark in Tulsa for 25 or more years.

The locally owned institutions featured in the following pages provide a vital economic foundation for our city and are known for their overall excellence, creating loyal customers, business success and longevity.

Enjoy learning about these valued businesses who succeed by keeping Tulsans coming back year after year.



# Tulsa Welding School

**T**ulsa Welding School (TWS) was founded in 1949 in Tulsa, Oklahoma, by two welders to meet the demand for skilled tradespeople in the welding industry. Since then, TWS has become a multi-campus institution that trains students in the skills, knowledge and attitudes necessary for entry-level positions in the skilled trades. TWS graduates are employed in all 50 states, according to TWS' annual report. In Tulsa, TWS staff, its students and its employer partners remain dedicated to offering individuals in the community the chance to forge a brighter future through skills-based education while contributing to the city's development and playing a vital role in preparing the next generation of Tulsa's workforce. This staple of the community both figuratively and literally helped build the foundation and infrastructure of the city it calls home.

Today, TWS offers hands-on training through its Professional Welder program, Refrigeration Technologies program, Electrical Applications program, Electro-Mechanical Technologies program and an Associate of Occupational Studies in Welding Technology.

“Our experienced staff works closely with all students to help them achieve their educational and career goals. We believe it's important for students to learn from professionals who have in-depth industry and hands-on knowledge to help develop their skills,” says Campus President Shalisa Powell, Ed.D. “From the moment a prospective student contacts TWS to learn more about our programs through the day they graduate and beyond, they will be accommodated, mentored and assisted by trained professionals dedicated to a students' well-being and satisfaction.”



For the past 75 years, TWS has remained on the cutting edge of industry advancements, ensuring students are prepared to enter the field with the most current industry knowledge. “As the industry continues to evolve, we have also made significant efforts to make the trades a more diverse and inclusive place for people of all backgrounds,” Powell says. “From scholarships to on-campus support and resources, TWS aims to break down any barriers in access to education and empower individuals to reach their full potential. What was once a male-dominated industry has now seen significant growth from diverse and underserved communities, especially women who now make up 10.8% of the construction industry workforce, according to the U.S. Bureau of Labor Statistics.”

The future is now with TWS and its virtual reality training program called OcuWeld. The program, designed by Tulsa Welding School faculty, allows students to practice their training

anywhere, on-demand using Meta’s Oculus Quest 2 technology. OcuWeld was designed to meet the changing needs of our students and their future employers while teaching students new skills and increasing access to education.

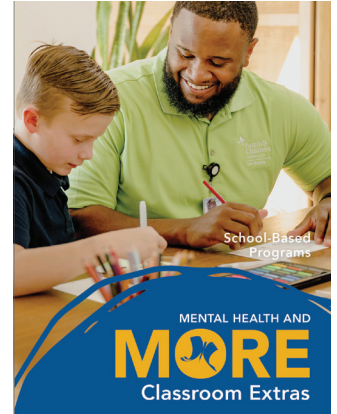
“Over the past 75 years, we have continued to expand upon that mission by bridging the skilled labor gap caused by retirements and aligning with future needs from employers to ensure our students are trained in the latest industry technology and standards,” Powell says. “By leaning into our strong roots while staying ahead of industry innovations, Tulsa Welding School has stood the test of time.”

In 2008 StrataTech acquired Tulsa Welding School and since then has expanded programming and opened new campuses — in Jacksonville, Florida; Houston and Irving, Texas — to meet the growing demand for skilled tradespeople.

Legacy  
BUSINESSES

25

YEARS OR MORE



Resource Rooms at many FCS locations provide clients with immediate access to clothing, food, bus tokens and MORE fostering security and stability during times of need.

# Family & Children's Services

In today's fast-paced world, prioritizing mental health care is more crucial than ever. Our mental well-being deeply influences every aspect of our lives, intricately connected with physical health and potentially influenced by the social drivers shaping our experiences.

When your health is compromised, seeking medical care is often the first step, but prioritizing your mental well-being is equally vital. That's where Family & Children's Services (FCS) come in. FCS plays a crucial role in not only providing mental health support but also offering comprehensive assistance. At FCS, individuals find a holistic approach that extends beyond symptom management to address mental and physical health concerns while also receiving guidance in navigating life's complexities.

What does that look like? Mental health care serves as the foundation for other services that may include substance use disorder treatment, crisis intervention and physical health coordination. This can also include preventive care, workforce development, advocacy and more to foster lasting change. This helps ensure comprehensive support for thriving in all facets of life.

FCS has always been dedicated to helping families and

children and acknowledges the distinctive challenges this group faces, including trauma and disruptive life events. By offering comprehensive wrap-around services and more, services support not only the child but entire family unit. This may include addressing school-related concerns, providing additional classroom resources or meeting basic needs.

FCS knows that every journey is unique, with its own set of experiences, challenges and strengths. Their person-centered approach customizes interventions to individual needs. Whether it's cognitive-behavioral therapy for anxiety triggers or mindfulness workshops for emotional resilience, FCS ensures that support is personalized and effective.

Moreover, providing more within mental health care benefits society at large. By addressing mental health proactively and comprehensively, FCS aims to alleviate burdens on emergency services, health care systems and judicial systems. Ultimately, this approach fosters healthier, more resilient communities.

With a network spanning over 85 accessible locations, including nine office sites, co-located facilities, and schools, support is never out of reach. FCS isn't just for families and children. We are mental health and MORE for everyone.

Legacy  
BUSINESSES

25

YEARS OR MORE



From above left, Katie Mabrey, Carlisle Mabrey IV, Scott Mabrey, Mark Mabrey, Melanie Mabrey Eggert. From bottom left, John Mabrey, Marilyn Mabrey Sulivant, Carlisle Mabrey III, Bruce Mabrey.

# Mabrey Bank

In 1906, G.W. Mabrey joined the Board of Directors at Citizens National Bank in Okmulgee, Oklahoma. Five generations and 15 Mabrey Bank locations later, the Mabrey family's legacy as stewards of a financial institution built on integrity, service and success is stronger than ever.

Led by brothers Scott Mabrey as the CEO and Carlisle Mabrey IV as the COO, Mabrey Bank is celebrating its 100th anniversary since the bank's current charter was granted in 1924. Over that century, Mabrey Bank has expanded from Okmulgee to Tulsa, Oklahoma City and eight other markets across the state. The additions of services like the Private Bank, Mabrey Mortgage and industry-specific lending products in health care, recreational land and much more have contributed to Mabrey Bank reaching \$1.8 billion in asset size.

However, assets alone can't tell the whole story of Mabrey Bank's longevity. The bank's success is rooted in treating its team members and customers like family, while caring for and respecting its communities. In 2023, Mabrey Bank donated more than \$545,000 to community initiatives across 220 organizations in addition to hundreds of volunteer hours served by the team members.

An updated mission statement, launched this year in the wake of the centennial milestone, reinforces the family's brand of customer-focused banking that has set Mabrey Bank apart over the last century.

*Our team provides sound financial solutions and personalized service to empower people, enrich businesses and improve the communities we serve.*

This mission, cultivated through generations of Mabrey family leadership and now upheld by more than 270 team members, showcases why Mabrey Bank has developed into a family-owned, locally operated pillar of the Oklahoma business community.

## Historical HIGHLIGHTS



1966: The Mabrey family acquires controlling interest of Citizens National Bank in Okmulgee, which would later become Mabrey Bank.



1994: The Mabrey family purchases Citizens Security Bank in Bixby, merging with Citizens National Bank, to begin a presence in the Tulsa footprint.



2015: The bank officially changes its name to 'Mabrey Bank,' emphasizing the family-owned and locally operated services.



Jeff Tutt, LaFonda Ehlers, Koby Creason, John Wilson, Chris Penn, Lynne Moore, Terry Hamm, Joseph Moore.

# Moore Funeral Homes and Fitzgerald Funeral Service

When James Herbert Moore opened his funeral home in 1932, he had no idea his company would become the largest funeral provider in Oklahoma. More than 90 years later, Moore has grown with Tulsa, both in the number of locations — six in total — and in the scope of services.

What have not changed are Moore's core values — as well as the family at the helm. "Our mission is to provide excellent care to the deceased and their families and to help create tributes that remember, honor and celebrate the lives of those very special people," says Joseph P. Moore, owner and grandson of the company's founder. "We give our families the highest level of personal and professional care during one of the most difficult times of their lives." Unique services offered include an onsite crematory, to ensure that all aspects of cremation are performed properly and with dignity.

Additionally, Moore offers special veterans' services and an extensive aftercare program — including online resources and weekly grief support groups. Moore's pre-planning services lock in today's prices and provide peace of mind. These offerings,

plus a commitment to service, have resulted in excellent reviews on family satisfaction surveys. Moore Funeral Homes and Fitzgerald Funeral Service's motto is to provide extraordinary service at a fair and affordable price.

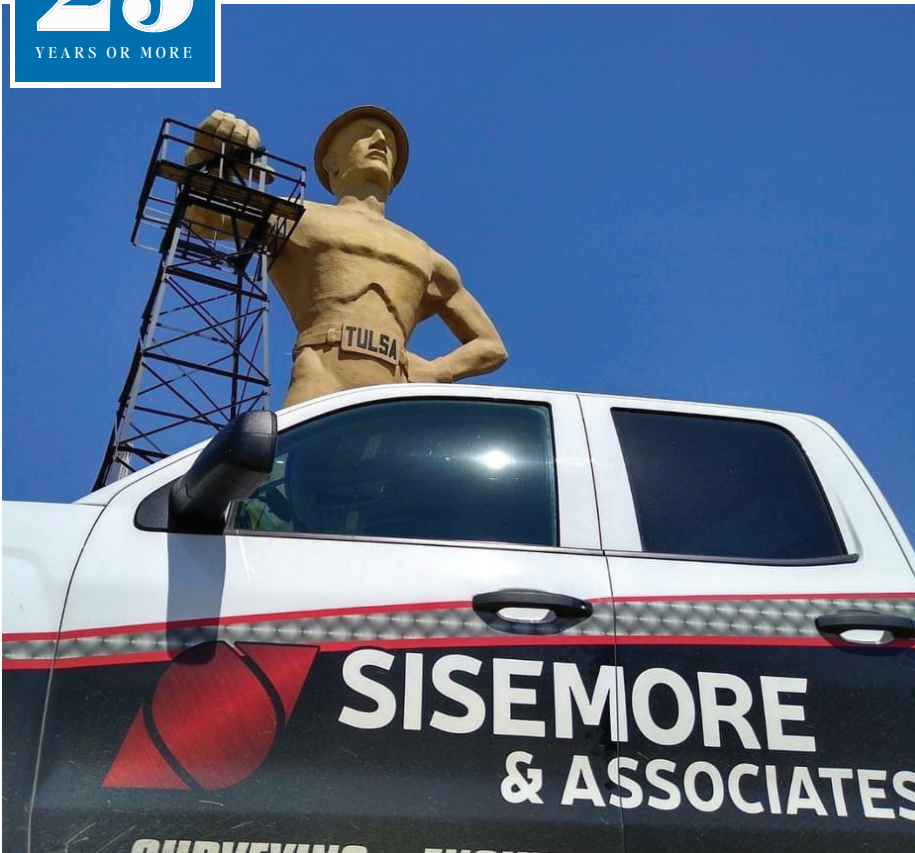
Moore/Fitzgerald maintains strong community involvement, both individually and corporately. The company takes special pride in its 40 full-time, dedicated and professional staff members, many of whom have been with Moore/Fitzgerald for more than 10 years and have experience working with families of all faiths. "Our families have come to know that we'll be here when they need us," Moore says.

Recently Moore further expanded services by opening a 2nd family center. In addition to the family center at the Fitzgerald Southwood Colonial Chapel, there is now a lovely 1700 square foot family center at Moore's Southlawn Chapel, 9350 E. 51st St. At these family centers, families and friends can continue to share memories and celebrate the life of their loved one while having refreshments or a meal at a reception following the memorial service.

Legacy  
BUSINESSES

25

YEARS OR MORE



SURVEYING • PLANNING • ENGINEERING



Shawn Collins, PLS, CFedS  
President  
Director of Land Surveying

## Sisemore & Associates

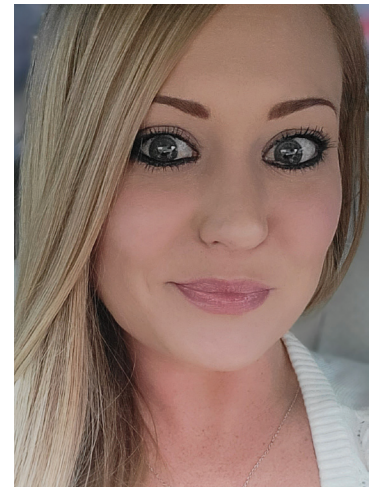
Established in 1995 in Tulsa, Sisemore & Associates, Inc. is dedicated to providing dependable Land Surveying, Land Planning and Civil Engineering Services. “With over 25 years of professional experience, we have the expertise to assure a client’s project runs smoothly from conception to the final as-built,” says Shawn Collins, PLS, CFedS. “We are proud of the knowledge and experience we have to offer to engineer and design firms, contractors, builders, real estate developers and private individuals.”

“We are longtime members of the Oklahoma and National Societies of Professional Land Surveyors, the Tulsa Chamber of Commerce and Tulsa Executives Association. As such, our company has earned the trust of multiple state agencies and local municipalities through innovation, creativity and years of experience.”

Sisemore currently has four licensed Professional Land Surveyors possessing decades of experience in ALTA/NSPS Surveys, Boundary Surveys, 3D Laser Scanning, UAV LiDAR Mapping and Topographic Surveys to Construction Layout/Staking and Final As-Built Surveys.

“Additionally, we have two Professional Civil Engineers with experience in storm sewer, waterline, utilities and grading design,” notes Collins. “Our Surveying, Land Planning and Engineering departments are supported by a highly talented crew of Project Managers, Cad Technicians, Survey Technicians, Clerical and Field personnel.”

“Whether the project is commercial, residential, industrial, institutional, or mixed-use in nature, our experienced staff offers expert advice and guidance,” notes Collins.



Aubrey Collins  
Executive Secretary  
Office Manager

Legacy  
BUSINESSES  
**25**  
YEARS OR MORE



Chelsea Hanoch, Lindsay Henderson, Jackie Vu, Brooke Taylor, Madi Page



Sandra Mullins

# Final Touch Commercial Cleaning

Since its establishment 39 years ago, FTCC has had one mission: to serve. We love serving our clients, our staff members, and our community. We are passionate about Tulsa and all our community partners. We consider our clients to be family and have long lasting partnerships with each of them.

‘We are a team of professionals with a proven track record in this region that performs our work with integrity to successfully exceed our clients’ expectations,’ says Sandra Mullins, founder and owner of the business that cleans more than 10 million square feet each night. ‘Our team is comprised of more than 280 experienced staff members who have worked together for many

years, including veterans with 30+ years of experience. Their expertise and hard work have provided us with many successful partnerships.’

Final Touch employees use sustainable products and practices to clean for health and safety, and produce long-term benefits. They were the first cleaning service organization headquartered in Oklahoma to achieve the Cleaning Industry Management Standard Green Building (CIMS-GB) certification with honors. The certification, based on an accredited assessment, demonstrates a commitment to the delivery of environmentally preferable services.



ImageNet leaders include: Ben Berghall, VP of Managed IT; Andrew Newell, Tulsa Sales Manager; Kyle Kempf, VP of AV; and Alan Webb, Oklahoma Market President.

# ImageNet Consulting

ImageNet Consulting was founded in Oklahoma in 1956 as Southwest Typewriter Company. As times and technology changed, so did the name. Southwest Typewriter Company began a legacy of providing superior solutions, products, and service. Over the years, the company experienced constant innovations in office equipment and communication technology. As the copy machine revolution began in the 1970's, ImageNet supplied clients with the products that met their budgets and provided the best solution. Through the generations, the company continues to utilize the platforms of leading technology companies to maximize efficiency and lower costs for clients.

Today, ImageNet Consulting is an industry-leading and award-winning Managed Services powerhouse. "With over 60 years of experience in the technology and business consulting industry, we have built a reputation for providing cutting edge technology to our clients with dependable expertise and strategic guidance along the way," says Alan Webb, Oklahoma Market president.

ImageNet works with companies of all shapes and sizes and from every industry.

ImageNet is an Oklahoma based company, and has a presence in 7 States with 19 locations. "While Managed Print is one of our core business offerings, we have evolved to a true IT Solutions company," notes Webb. "Our customers now additionally rely on us for Enterprise Content Services, Audio Visual

Solutions, 3 D Printers and Managed IT Services" says Ben Berghall, Director of Managed IT Services.

ImageNet's Managed IT solutions team of over 40 individuals provide small and medium size clients across multiple verticals essential IT services from 24/7 help desk support, network and server management, data backup, disaster recovery to critical cyber security. "It is difficult for small and medium businesses to keep up with all the cyber security threats" says Berghall. That's why ImageNet has invested heavily in people and technology to help businesses secure their networks, computers and end-users. ImageNet Managed Security Services includes: Automated server and workstation protection tools backed by 24/7 threat hunting teams, cybersecurity end-user awareness training, and email protection and threat monitoring.

As Webb and Berghall reflect on their 15 years with ImageNet, they have seen the company grow from a few hundred employees to almost 500 in seven states. "Tulsa is very important to us, and we are proud to have been part of growing our Tulsa team from 12 employees to over 50 today. We were originally downtown in the Blue Dome district, but we quickly outgrew that location and moved to our current location on 41st Street between Sheridan and Memorial. We welcome you to stop by and see our showroom" says Webb, "and learn more about the products and services we offer our business clients."



## Jim Blankenship Quality Collision Repair

Jim Blankenship and his wife, Elizabeth, are proud that their downtown auto body repair business has been successful in Tulsa for over 49 years.

Blankenship purchased the company in 1975 from auto dealer Bob Spraker. "I had worked with my parents in their body shop starting at age 14," says Blankenship, a 1960 graduate of Tulsa Central High School who attended TU and served in the National Guard before going into business.

"It has been our pride over these many years to provide our customers with the highest quality of collision repair, striving to achieve excellence on every job," he says.



Jim Blankenship

Blankenship is proud to have trained and mentored many students from Tulsa Technology Center and Oklahoma State University Institute of Technology over the years.

"I am very appreciative of the good company we have been able to build over the years and I thank Elizabeth for being so special to our customers, our employees and to me," says Blankenship.

1216 S. DETROIT AVE. | 918-587-4356 | [JIMBLANKENSHIPTULSA.COM](http://JIMBLANKENSHIPTULSA.COM)



## Independent Material Company

Independent Material Company (IMC), a commercial and residential masonry supply company, was established by the Swayze and later McKinney family in Tulsa in 1924. Anna Helgadottir and Johann Skaftason started doing business with IMC and Wendell McKinney back in 1976. The company stayed in the family for three generations until the unexpected death of John McKinney in 2014. With the McKinney family's blessing, long time customers and close family friends Anna and Johann purchased this historic business. IMC is still at the original location, just northeast of downtown Tulsa. While modernized in many ways, the building still has much of its historical charm with beautiful beams and brick walls.

IMC specializes in commercial and residential masonry supplies. "Some of our customers are second and third generation masons, with memories of coming here with a grandfather," said Jennifer Kudirka, operations manager. "We get to know our customers, and we take pride in helping, whether it's a homeowner looking for materials, or a contractor getting ready for a major build."

IMC is proud to be Tulsa's local supplier of commercial masonry



The team at IMC, Inc.: Justin Corder, Sales; Jennifer Kudirka, Operations Manager; Seth Orban, Driver; Nick Smith, Warehouse; Jose Aquirre, Warehouse.

supplies, tools and equipment. Colored mortars, concrete mix, concrete blocks, stucco supplies, plaster, and thin set are well stocked here. There are many otherwise hard to find items and specialty tools in the showroom, and if you don't see what you're looking for, IMC is happy to order it for you. Newer products include pavers, retaining walls, fireplace supplies, stone and other hardscape and outdoor living products for home and business.

"After 100 years in Tulsa, many IMC customers and vendors have become our dear friends and, along with our wonderful employees, have become part of the extended family of Independent Material Company," says Anna. "IMC is proud to provide the craftsmen of Tulsa quality materials to build and expand this city, benefitting even more generations to come."

34 N. OWASSO AVE. | 918-582-0196 | [INDEPENDENTMATERIAL.COM](http://INDEPENDENTMATERIAL.COM)

Legacy  
BUSINESSES

25

YEARS OR MORE



Tulsa store General Manager Hamid Amini with Company Founder Mack Amini and Rajeanna Amini, who serves as Controller. Generations of dedication: The Amini family proudly stands at the heart of their family-owned business since 1975.

## Amini's Galleria

Amini's Galleria, a Tulsa-based retailer specializing in indoor and outdoor home entertainment goods, is nearing its 50th anniversary. Founded by Mack Amini in 1975 with just five pool tables, the company has flourished into a family-driven enterprise with innovative product lines and expansive inventory both in-store and online. With over 150,000 square feet of retail space across locations in Oklahoma City, St. Louis, and Kansas City, Amini's has become a household name that has made families happy for years.

"My vision has always been to be a retailer who cares for its customers, and to provide products that enhance our customers' homes and lives," emphasizes Mack. "That belief remains the same today with our company purpose "We Really Care" carried by our strong and caring staff that have been with Amini's for decades. This is the heartbeat of our company, and why we are still here today."

One will find a member of the Amini family involved in every store location. The founder's wife, Rajeanna Amini is the controller and general manager of the company, and their sons, Arash and Hamid Amini, who are the CEO and General Manager of Tulsa respectively lead the company's strategy that is focused on selling products that enhance the elegance and family entertainment in the home backed by the company's



Amini's offers a wide selection of indoor and outdoor home entertainment goods, such as pool tables, game room furniture, arcade games, indoor and outdoor furniture, area rugs, bar stools, and now traditional and infrared saunas and cold plunge!

5-STAR Amini Advantage Service Guarantee and a 105% Price Match Guarantee.

Amini's has evolved beyond pool tables to become a leading supplier of indoor and outdoor home entertainment goods. Their newest addition, the Wellness Category, offers traditional, infrared, custom, and outdoor saunas, along with cold plunges. Arash Amini emphasizes the importance of products that positively impact customers' happiness and health, highlighting the significant benefits of saunas in enhancing well-being.

As a family-owned operation, Amini's is committed to its customers and their well-being, ensuring they continue to provide exceptional products and service for years to come.



## We B Trees

In 1995, Tim Nall established We B Trees, a Tulsa-based tree service offering removals, pruning, arborist consultations and plant health care treatments. The company has grown over the decades with a focus on trust and honesty, between both customers and employees.

“We always want to be completely transparent with a customer when it comes to their trees,” Nall says. “If there’s a way we can save the tree, we will do everything we can.”

We B Trees is a family owned and operated business. Tim’s wife, Barbara Nall, co-owns the company and manages the financial side of the operation. “Something we pride ourselves on is the relationship we have with our employees — being a small family operation we view and treat them as part of our own family,” she says. She credits them with getting We B Trees to where it is today.



Kierstyn Ramsay-Kunce, Shawntel Lunn, Omar Caracheo, Barbara Nall, Office Dog Nala, Tim Nall, Ron Roberts, Filemon Jimenez, Skyler Cardenas

We B Trees, which has won the Better Business Bureau’s Torch Awards for Ethics multiple years, is a trusted name and has established partnerships with Tulsa icons like Gathering Place, Philbrook Museum of Art, River Parks and others.

**3755 S. TACOMA AVE. | 918-446-3473 | WEBTREES.COM**



## Empire Fence Company

Empire Fence Company has become the “familiar face to turn to” for all of your fencing needs. All great things have small beginnings. When owner Bob Richison began the business in 1955, it was just a small backyard enterprise. With a lot of hard work, a love for helping others, and a big dream, Richison turned Empire Fence into a successful small business. When grandson Nathan Nelson joined the team in 1998, the two businessmen formed a dynamic duo. Together, they teamed to lead Empire Fence to becoming the leading “face” for residential fencing.

Although Richison has officially passed the business leadership to grandson Nathan, who serves as President/CEO of the company, Bob’s face, name, and legacy will always remain at Empire Fence Company. Under Nelson’s leadership, the company has expanded into the commercial industry and continues to grow and thrive.

“We have always done business the old-fashioned way since my grandfather first began Empire Fence,” said Nelson, “and we remain



Empire Fence President and General Manager Nathan Nelson with founder Bob Richison, his grandfather

committed to a foundation of integrity by offering customers quality products and excellent service at a fair price. Bob Richison had a heart to serve others and that trait is in the DNA of Empire Fence Company. It’s an honor to carry on what my grandfather began over 60 years ago and continue meeting the residential and commercial fencing needs of northeast Oklahoma,” says Nelson.

**22 N. GARNETT RD, TULSA, OK 74116 | 918-437-1671 | EMPIREFENCE.NET**



Tim Ziegler, Matt Ziegler, Alan Morrow, Trent Morrow

## Ziegler's Art & Frame

Ziegler's Art & Frame has been Tulsa's leading custom shop for 50 Years. The family owned and managed business celebrated its 50th anniversary last summer. Many things have changed during those 50 years of business, but what will always stay the same is Ziegler's commitment to quality work and friendly service.

Founder Dan Ziegler started Ziegler's as a wholesale business in 1973. In the early 80's he brought his son-in-law Alan Morrow into the operation to open a retail shop located at what would eventually be known as "the very Large Corner of Lewis and Admiral." Dan's sons Danny, and Tim soon joined the growing family business. Trent Morrow and Matt Ziegler are the third generation of the family enterprise who are dedicated to keeping the historic Tulsa business going.

Many improvements have been made to the store in the last few years, including a new gallery that just opened this month. Visit the store and you will find a wide selection of frames, art supplies, gifts, and home décor. After 50 years of success, the future looks bright for Ziegler's!

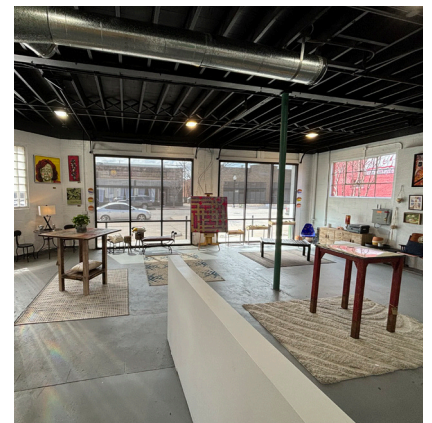
## Historical HIGHLIGHTS



The Conoco station at 2325 East Admiral Boulevard, circa 1940s.



The shell of the old Conoco station as it appears sitting next to Ziegler's today.



The old station as a part of Ziegler's store.



## ABC Equipment Rental

ABC Equipment Rental has been dedicated to renting and selling quality power tools and construction equipment in Tulsa since 1952. ABC offers a wide variety of products, to rent including excavators, skid steer loaders, boom lifts, scissor lifts, forklifts, telehandlers, appliance dollies, aerators, garden tillers, jack hammers, compaction equipment, heaters, pressure washers, plumbing equipment, and concrete equipment. Big and small we try to rent it all.

“Our company works with contractors, home owners, landscapers, manufacturers, construction personnel and also do it yourselves, said Charles Hewett, the owner of ABC. “We constantly strive to provide our customers with solutions to get jobs completed. The right tools and the right equipment help insure a job well done. We rent solutions.”

ABC Rental began in 1952 four blocks from the current location at 2910 East 15th Street. Charles Hewett’s father Tim Hewett, a Vietnam War veteran, purchased ABC in 1977. Charles Hewett, who became president of ABC in 2015, and then owner in 2019, has expanded the business with a second location at 9222 E 21st



Service Manager Joshua Blankenship, Operation Manager Wendell Edd, who has 40 years of service, Sales Manager Chris Rust, Owner and President Charles Hewett, Fleet Manager Brad Burgess

Street. The second location has a large lot where the company stocks the larger equipment in the fleet.

“I am extremely proud to own a business that has served the greater Tulsa area for 72 years,” said Charles Hewett, “and to have built a reputation among our customers for reliability, helpfulness and knowledge of equipment.”

**2910 E. 15TH ST. | 9222 E. 21ST. ST. | 918-744-8353 | ABCEQUIPMENTRENTAL.COM**



## Indian Health Care Resource Center of Tulsa

Since 1976, Indian Health Care Resource Center of Tulsa Inc. (IHCRC) has served more than 300,000 Tulsa-area American Indians with comprehensive health, wellness and behavioral health care. All services are offered in a single building for ease of care, accessibility and integration. Several special programs and events are available to enhance well-being and reconnect the community to their culture.

More than 10,000 individuals from over 126 tribes receive care annually. Another 2,400 participate in cultural events and family activities. IHCRC continues to add services and programs to promote an approach to care that strengthens physical, mental, emotional and spiritual wellness within the American Indian community.



“Some of our earliest patients have grandchildren, great-grandchildren and even great-great-grandchildren who are now receiving care at IHCRC,” says CEO Carmelita Skeeter, who has been with the organization since its founding. What started with one part-time physician is now a staff of 170.

Indian Health Care Resource Center is accredited by the Accreditation Association for Ambulatory Health Care (AAAHC), as an Ambulatory Health Clinic and a Medical and Dental Home. All services are free to any individual with a CDIB or tribal membership card. The organization is a 501(c)(3) non-profit with a community board and is not tribally affiliated.

**550 S. PEORIA AVE. | 918-588-1900 | IHCRC.ORG**

Legacy  
BUSINESSES25  
YEARS OR MORE

McGraw President and CEO Bill McCollough with Lindsey Schломann, EVP and Oklahoma Principal Broker

# McGraw REALTORS®

**M**aking Home Buying and Selling Effortlessly Simple Since 1938.

Experience the joy of stress-free home buying and selling with McGraw REALTORS®. Since 1938, we've dedicated ourselves to simplifying one of the most critical choices you'll make—where you live. What started as an independent residential real estate company in Tulsa, Oklahoma has become one of the nation's top ten fastest-growing real estate companies with over 830 experienced associates across twenty-one offices serving Oklahoma, Arkansas, and Colorado.

"There are many attributes that make McGraw Realtors the best in our business. It could be the tenacity of our people or it could be the dedication they have to each other and to our customers. I believe it is our Culture that separates us from everyone else," said Bill McCollough, president and CEO. "Our people focus every day to provide the best service, marketing and technology in the business. We are relentless in

our pursuit to be the best and we have been for over 85 years. McGraw is a diverse company filled with a diverse group of people, but for all the things that make us different, three crucial values hold us together: strong character, the courage to always do what is right, and the resolve to stay loyal to our principles," McCollough adds.

"McGraw Realtors associates aspire to the McGraw standard of our core values; to be committed, loyal, and tenacious. The culture of our company is our principle value, which is a strong foundation of family, support, and outstanding character," noted Lindsey Schломann, executive vice president and Oklahoma Principal Broker.

Choose McGraw REALTORS® and experience real estate service that is woven from the threads of our rich tradition to provide you with an unrivaled, seamless process.

"We are committed. We are loyal. We are tenacious. We are McGraw Realtors."