

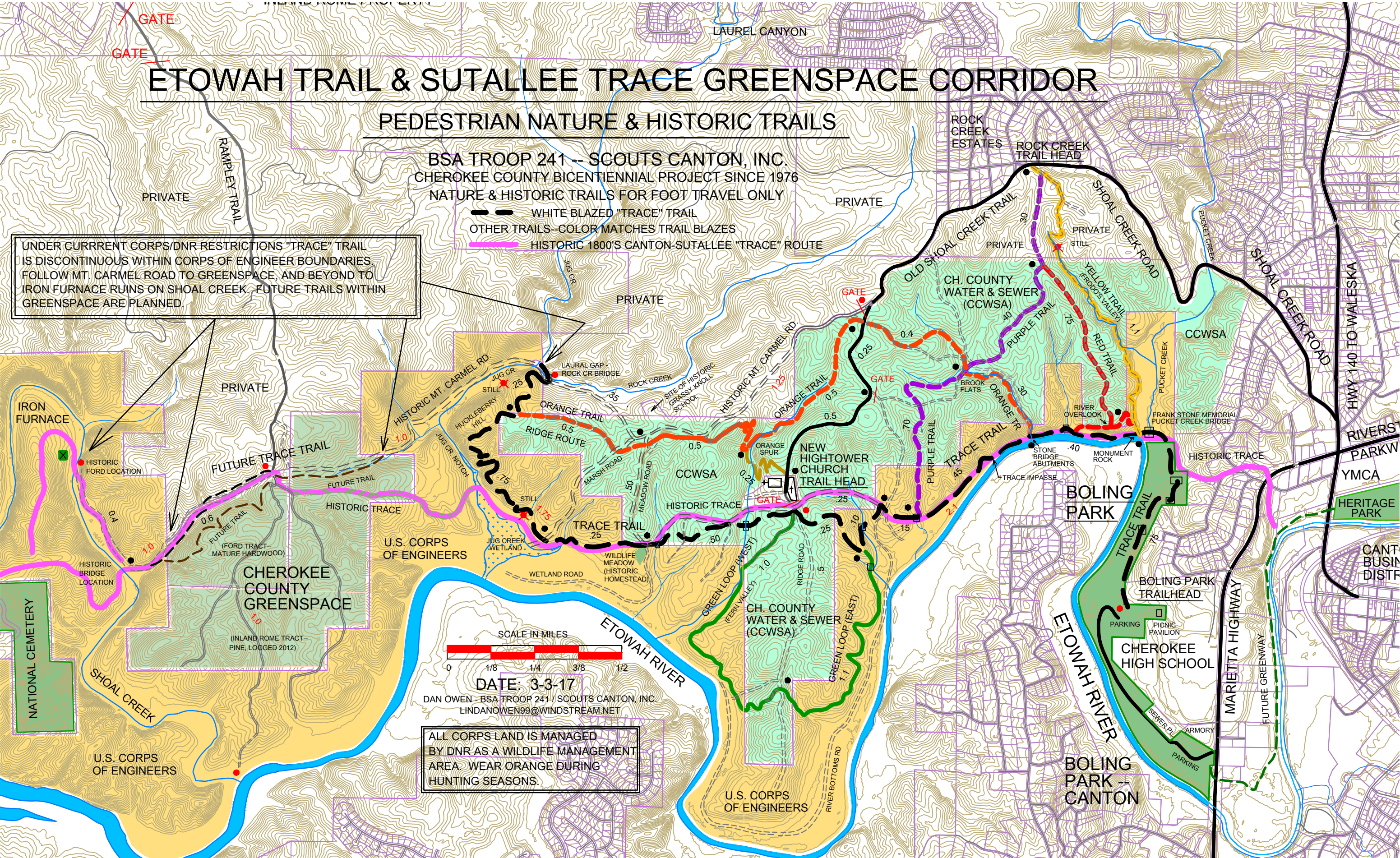
ETOWAH TRAIL & SUTALLEE TRACE GREENSPACE CORRIDOR

PEDESTRIAN NATURE & HISTORIC TRAILS

BSA TROOP 241 -- SCOUTS CANTON, INC.
CHEROKEE COUNTY BICENTIENNIAL PROJECT SINCE 1976
NATURE & HISTORIC TRAILS FOR FOOT TRAVEL ONLY

- WHITE BLAZED "TRACE" TRAIL
- OTHER TRAILS--COLOR MATCHES TRAIL BLAZES
- HISTORIC 1800'S CANTON-SUTALLEE "TRACE" ROUTE

UNDER CURRENT CORPS/DNR RESTRICTIONS "TRACE" TRAIL IS DISCONTINUOUS WITHIN CORPS OF ENGINEER BOUNDARIES. FOLLOW MT. CARMEL ROAD TO GREENSPACE, AND BEYOND TO IRON FURNACE RUINS ON SHOAL CREEK. FUTURE TRAILS WITHIN GREENSPACE ARE PLANNED.



DATE: 3-3-17

DAN OWEN - BSA TROOP 241 / SCOUTS CANTON, INC.
LINDANOWEN99@WINDSTREAM.NET

ALL CORPS LAND IS MANAGED BY DNR AS A WILDLIFE MANAGEMENT AREA. WEAR ORANGE DURING HUNTING SEASONS.