

8/17/24

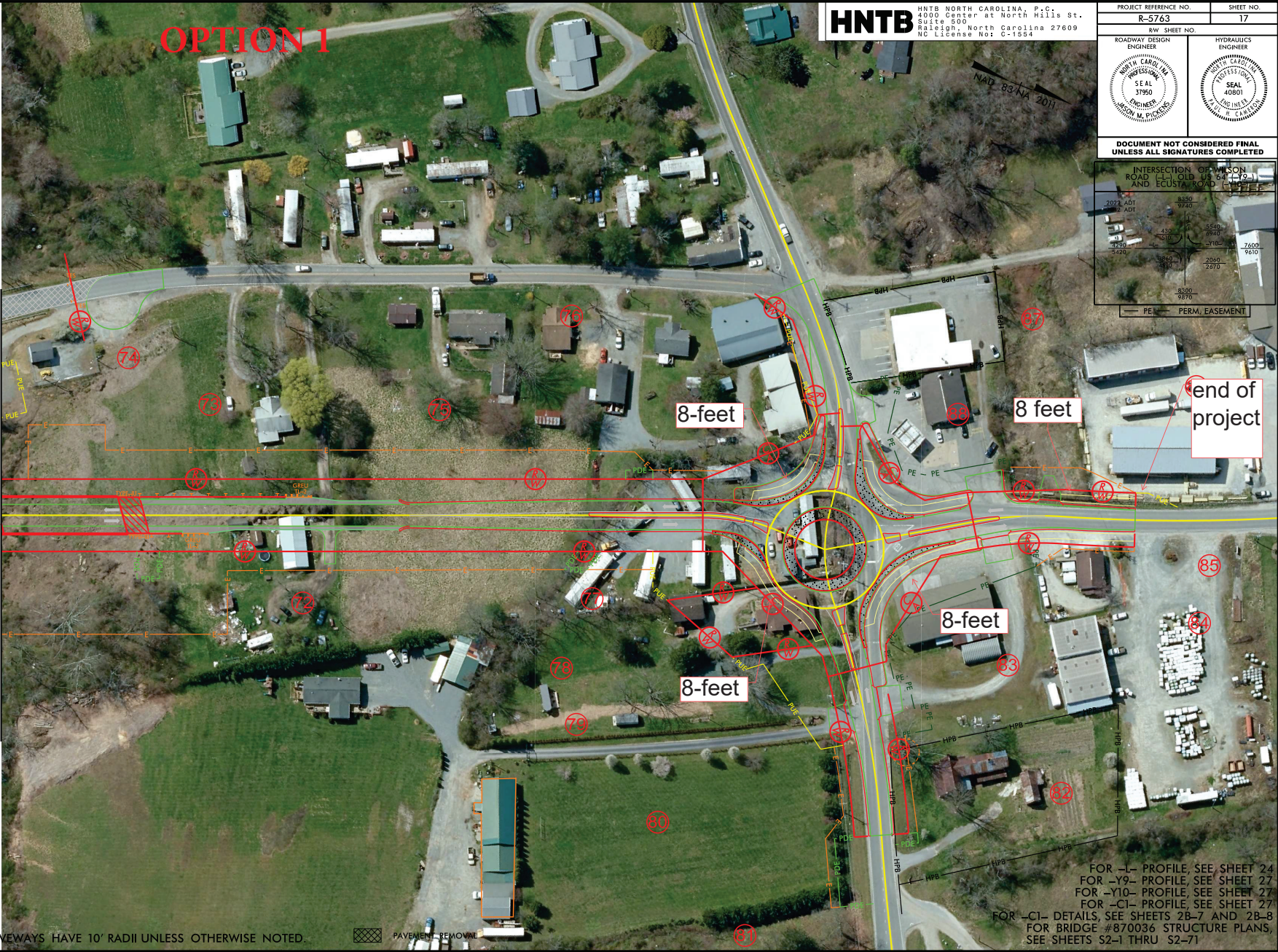
REVISIONS

12/20/2023: REVISED PUE LIMITS ON PARCELS 73 AND 74 REVISED PORTIONS OF TCE AND PUE ON PARCELS 83,84,87,88, AND 89 TO PE.
 1/20/2023: REVISED PE AND PUE LIMITS ON PARCELS 88 AND 89.
 2/3/2023: DRIVEWAY ADDED TO PARCEL 76 AND CHANGE NEEDED TO ROW OR EASEMENT.
 3/1/2023: DRIVEWAY ADDED TO PARCEL 76 AND CHANGE NEEDED TO ROW OR EASEMENT.
 05-19-2023: INCREASED TEMPORARY CONSTRUCTION EASEMENT TO PARCEL 72.
 06-19-2023: REVISED ROW AND EASEMENT AREAS ON PARCELS 72,73, AND 74 DUE TO REVISED PROPERTY LINES.
 07-20-2023: REMOVED PUE AND DECREASED TCE AND PE ON PARCEL 81.

MATCHLINE -L- 191 + 00 SEE SHEET 16

NOTE: 1. ALL DRIVEWAYS HAVE 10' RADII UNLESS OTHERWISE NOTED.

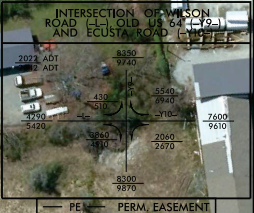
PAVEMENT REMOVAL



HNTB HNTB NORTH CAROLINA, P.C.
 4000 Center at North Hills St.
 Suite 600
 Raleigh, North Carolina 27609
 NC License No: C-1554

PROJECT REFERENCE NO. R-5763	SHEET NO. 17
ROADWAY DESIGN ENGINEER HNTB NORTH CAROLINA PROFESSIONAL ENGINEER JASON W. PICKENS	HYDRAULICS ENGINEER HNTB NORTH CAROLINA PROFESSIONAL ENGINEER JAMES W. CARRER

DOCUMENT NOT CONSIDERED FINAL UNLESS ALL SIGNATURES COMPLETED



end of project

FOR -L- PROFILE, SEE SHEET 24
 FOR -Y9- PROFILE, SEE SHEET 27
 FOR -Y10- PROFILE, SEE SHEET 27
 FOR -C1- PROFILE, SEE SHEET 27
 FOR -C1- DETAILS, SEE SHEETS 2B-7 AND 2B-8
 FOR BRIDGE #870036 STRUCTURE PLANS, SEE SHEETS S2-1 THRU S2-71