

Shoals HOMEFRONT

View more details & photos of homes on your smart phone. Text SMS Code to 27414.

*Msg & Data Rates May Apply; Ts & Cs and Privacy Policy: <http://autoconx.com/terms>

FOREST AT THE HIGHLANDS

OPEN SUNDAY 2-4 PM

LOTS ARE GOING FAST! • Prices start at \$150,000

Choose your Own Builder

Come See us Today for lots of Information!!

Very close to NAMC and only 5 minutes from Downtown Florence

Directions: HWY 72 to S. Cox Creek PKWY Left on Huntsville RD. Right on E. Lakeside DR. Follow it to the end.



Jeannie Rogers
256-366-0580



COLDWELL BANKER
PINNACLE PROPERTIES



Liz Marbury
256-627-9706



WATERFRONT LOTS

687893-1

110 HUMMINGBIRD WAY - KILLEN

REDUCED

Beautiful New Construction in Delaney Trace.

This 3 bed, 2 bath brick house with Bonus room offers 2466 sq. ft. on a .4+/- ac lot with sprinkler system. The house showcases many extra features and upgrades. \$504,900



RESIDENTIAL | LAND | COMMERCIAL



Jeremy Grigsby
Jason Grigsby
256-757-1008
grigsbyproperties.com

687893-1

811 REBEL DRIVE, TUSCUMBIA

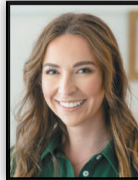
**OPEN HOUSE SUNDAY
APRIL 12TH • 2-4 PM**

TUSCUMBIA CHARMER

• \$219,900 | 3BR/2BA | ~1,800 Sq Ft

Solid brick + great layout + prime location = opportunity you don't want to miss. Bright living spaces, roomy lot, and tons of potential to make it your own.

Whether you're buying your first home or your next investment—this one checks the boxes.



RE/MAX
TRI-STATE

Ashley McClellan
256-843-0719



688099-1

405 NOTTINGHAM RD - FLORENCE

REDUCED

Excellent location in desirable Sherwood Forest. This move-in ready 4 bed, 3 bath, brick house offers 2820+/- sq. ft. on a roomy, manicured 0.36+/- ac lot. With stainless steel appliances, custom cabinets, and granite countertops, the house has been nicely renovated. The property has a convenient, climate-controlled outbuilding and a new sprinkler system. Must see to appreciate. \$399,900



RESIDENTIAL | LAND | COMMERCIAL



Jeremy Grigsby
Jason Grigsby
256-757-1008
grigsbyproperties.com

687893-1

722 DIXIE AVE, FLORENCE

**UNA LOCATION
NEW LISTING**

Downtown Florence location of this 3BR/2.1BA one level home with 1,479sf+/- . Complete remodel 2020, HVAC & fencing 2021, kitchen appliances 2023. Hardwood/vinyl flooring, storm cellar with exterior door (storage/workshop) ...

MLS 528020 \$229,000



REAL ESTATE, INC.
"We hold the key to your next home."
Shirley Neese
(256) 335-6789
Shirley@neesere.com
www.shirlyneese.com



687890-1

The real estate market is in

Full Bloom



If you're planning to buy or sell a home this spring, contact one of these Shoals area REALTORS® with local market expertise.