

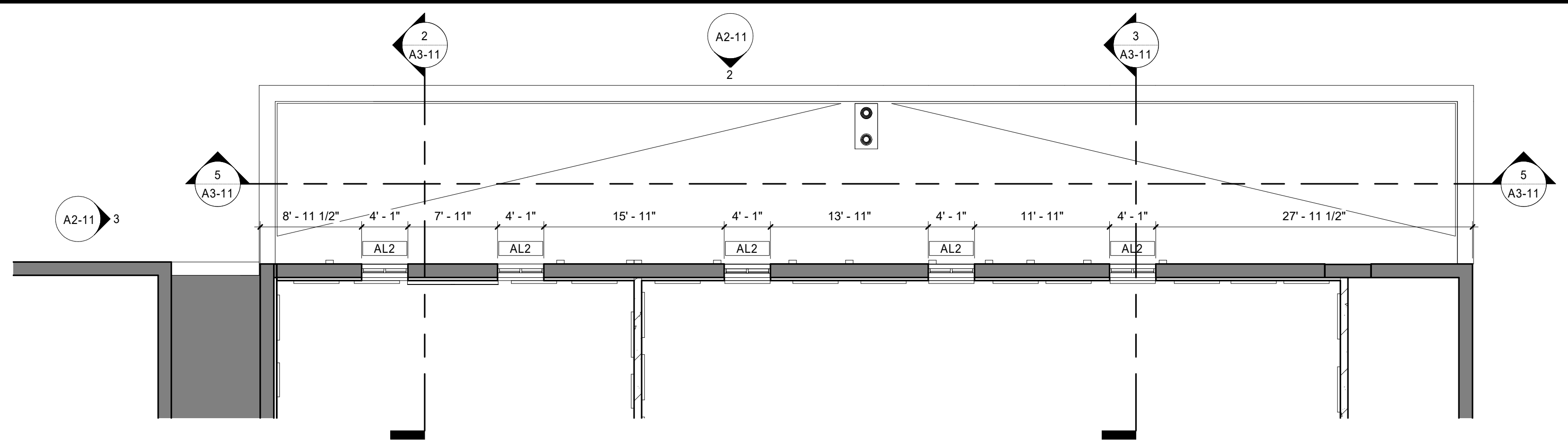


PRELIMINARY NOT FOR CONSTRUCTION

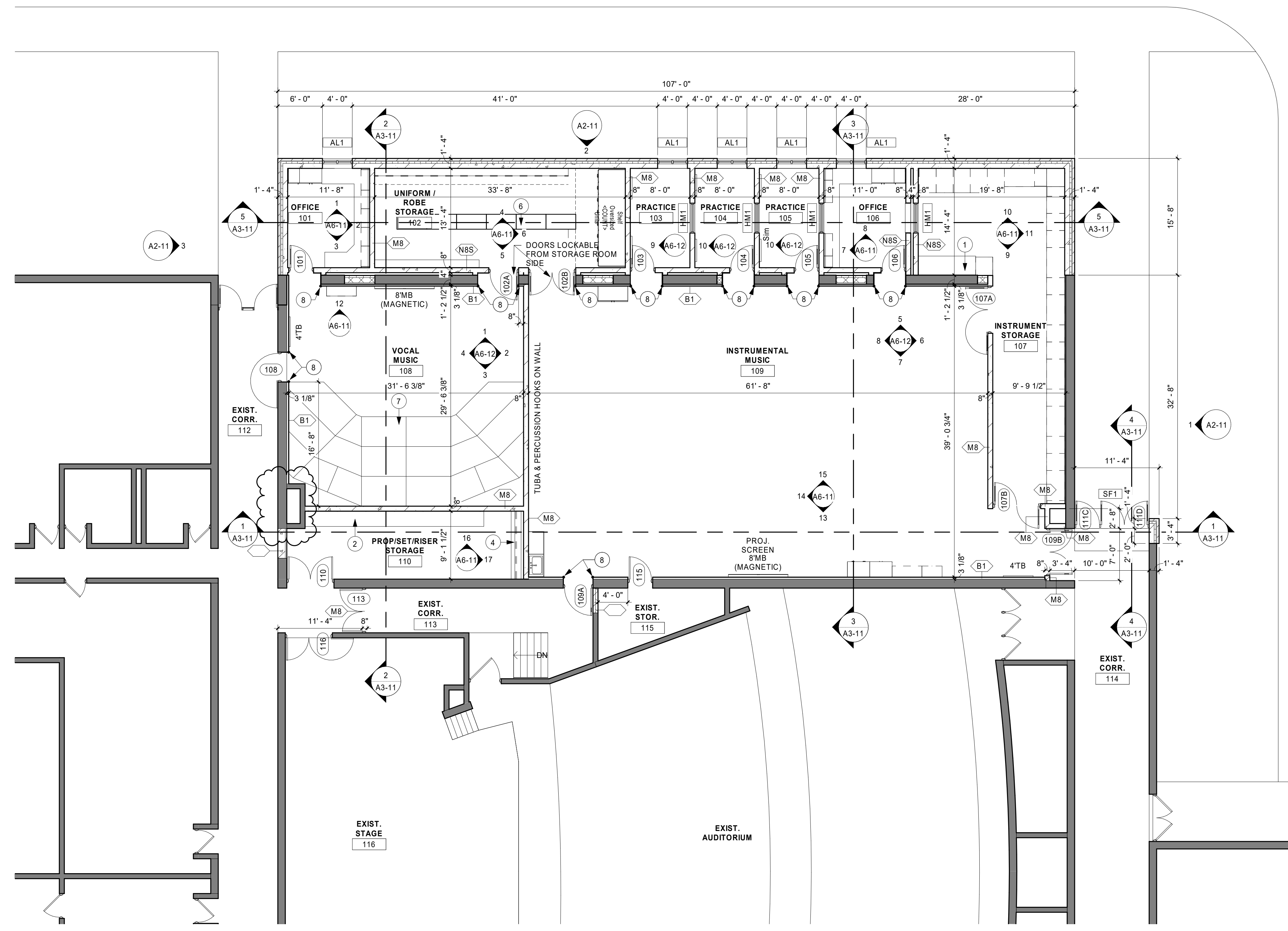
- ### SHEET NOTES
- PITCH ALL NEW CONCRETE STOOPS 1/4" PER FOOT AWAY FROM BUILDING.
  - DIMENSIONS ARE FROM FACE OF MASONRY/ CONCRETE AND CENTER OF ASSEMBLY FOR STUD WALL, UNLESS NOTED OTHERWISE.
  - REFER TO G1-21 FOR RATED WALL LOCATIONS.
  - HOUSEKEEPING AND EQUIPMENT PADS BY GENERAL CONTRACTOR. SEE PLUMBING, HVAC & ELECTRICAL PLANS FOR LOCATIONS.
  - FIRE STOP ALL PENETRATIONS INCLUDING BUT NOT LIMITED TO STEEL JOISTS & BEAMS, PIPING AND DUCTWORK THRU RATED WALLS.
  - SEE STRUCTURAL PLANS FOR MASONRY WALL BRACING DETAILS.
  - IDENTIFY WITH PAINTED LETTERING 'FIRE WALL' AND 'FIRE BARRIER WALL' ABOVE CEILING 20'-0" O.C. MAX, BOTH SIDES OF WALL. SEE G1-21 FOR LOCATIONS OF RATED WALLS.
  - PROVIDE LINTELS AS SHOWN IN STRUCTURAL DRAWINGS ON NON-LOAD BEARING WALL LINTEL SCHEDULE AT ALL NON-BEARING WALL OPENINGS, INCLUDING DUCT OPENINGS.
  - ALL PIPING, CONDUITS AND RELATED MECHANICAL AND ELECTRICAL ITEMS SHALL BE CONCEALED WITHIN GYPSUM BOARD FURRING AS REQUIRED IN FINISHED AREAS WHETHER SHOWN ON DRAWINGS OR NOT, UNLESS NOTED OTHERWISE.
  - PROVIDE BULLNOSE CORNERS AT CMU VERTICAL CORNERS UNLESS OTHERWISE INDICATED.

- ### WALL LEGEND
- EXISTING CONSTRUCTION TO REMAIN
  - NEW CONSTRUCTION

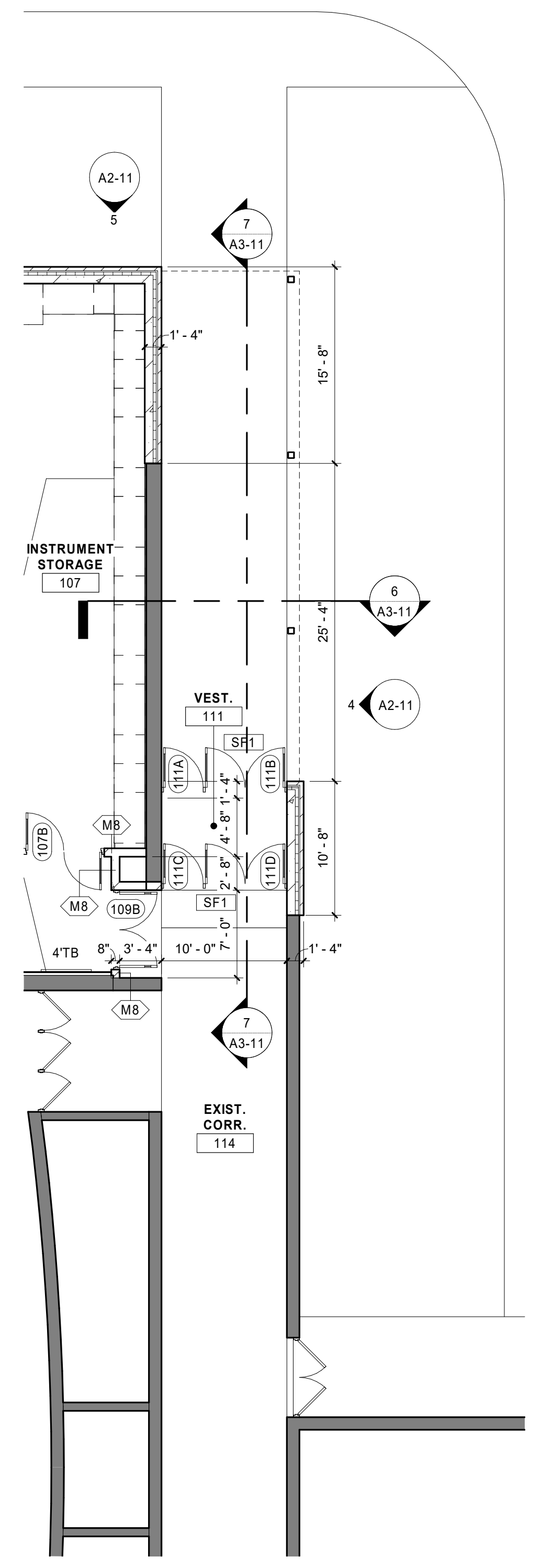
- ### KEYNOTE LEGEND
- |   |   |
|---|---|
| 1 | ADJUSTABLE SHELVING - 4 SHELVES, 30" DEEP. SEE ADJUSTABLE SHELF DETAIL. |
| 2 | ADJUSTABLE SHELVING - 2 SHELVES, 24" DEEP. SEE ADJUSTABLE SHELF DETAIL. |
| 4 | DOUBLE HIGH ROD & SHELF. SEE ROD & SHELF DETAIL.                        |
| 6 | MOBILE GARMENT RACKS. REFER TO SPECIFICATIONS.                          |
| 7 | MOVABLE CHORAL RISERS. REFER TO SPECIFICATIONS.                         |
| 8 | CORNER GUARD 4'-0" HIGH. REFER TO SPECIFICATIONS.                       |



3 CLERESTORY WINDOW PLAN  
1/8" = 1'-0"



1 FIRST FLOOR PLAN  
1/8" = 1'-0"



2 ALTERNATE FIRST FLOOR PLAN  
1/8" = 1'-0"

THIS DOCUMENT IS THE PROPERTY OF I & S GROUP, INC. AND MAY NOT BE USED, COPIED OR DUPLICATED WITHOUT PRIOR WRITTEN CONSENT.

PROJECT  
**MUSIC REMODELING FOR THE IOWA FALLS - ALDEN HIGH SCHOOL**  
IOWA FALLS IOWA

REVISION SCHEDULE		
DATE	DESCRIPTION	BY
MM/DD/YYYY		

PROJECT NO. 18-22509  
FILE NAME  
DRAWN BY  
DESIGNED BY  
REVIEWED BY  
ORIGINAL ISSUE DATE  
CLIENT PROJECT NO.

TITLE  
**FIRST FLOOR PLAN**

SHEET  
**A1-21**

