



STATE REPORT  
10.18.2020

## IOWA

### SUMMARY

- As we continue to work with each of you on data quality and data reporting, we will continue to add relevant data to our joint understanding. We greatly appreciate the feedback and we use this to continually improve. This week, we have included the data reported to HHS from your hospitals regarding admissions and next, we will include PPE data reported.
- Iowa is in the red zone for cases, indicating 101 or more new cases per 100,000 population last week, with the 8th highest rate in the country. Iowa is in the orange zone for test positivity, indicating a rate between 8.0% and 10.0%, with the 9th highest rate in the country.
- Iowa has seen an increase in new cases and an increase in test positivity over the last week.
- The following three counties had the highest number of new cases over the last 3 weeks: 1. Polk County, 2. Woodbury County, and 3. Dubuque County. These counties represent 22.6% of new cases in Iowa.
- 90% of all counties in Iowa have moderate or high levels of community transmission (yellow, orange, or red zones), with 49% having high levels of community transmission (red zone).
- During the week of Oct 5 - Oct 11, 11% of nursing homes had at least one new resident COVID-19 case, 26% had at least one new staff COVID-19 case, and 4% had at least one new resident COVID-19 death.
- Iowa had 238 new cases per 100,000 population in the last week, compared to a national average of 117 per 100,000.
- Between Oct 10 - Oct 16, on average, 67 patients with confirmed COVID-19 and 34 patients with suspected COVID-19 were reported as newly admitted each day to hospitals in Iowa. An average of greater than 95% of hospitals reported either new confirmed or new suspected COVID patients each day during this period.

### RECOMMENDATIONS

- We have included cases, test positivity, and deaths by month in the back of your packet to show the time sequence in Iowa and the country as a whole. These demonstrate the impact of comprehensive mitigation efforts when implemented effectively and that partial or incomplete mitigation leads to prolonged community spread and increased fatalities.
- Mitigation efforts must be strengthened in areas with increasing cases and test positivity. These should include mask wearing, physical distancing, hand hygiene, avoiding crowds in public and social gatherings in private, and ensuring flu immunizations.
- In red and orange counties, both public and private gatherings should be as small as possible and optimally, not extend beyond immediate family.
- Keep testing levels high across the state, particularly in red and orange counties, to quickly identify positives so they can isolate themselves and prevent ongoing transmission.
- Fully deploy Abbott BinaxNOW tests statewide in sentinel sites and populations; weekly surveillance data will proactively identify emerging hotspots where immediate action should be taken to stop the spread within communities. All antigen tests must be reported with both the number of positive results and total tests conducted; positives must be reported as COVID cases. Repeat testing of individuals as surveillance with confirmation of all positives with nucleic acid testing is the optimal use of antigen tests.
- With 26% of nursing homes reporting at least one COVID positive staff member, work with nursing homes to trace exposures of positive staff to decrease introduction of community transmission to nursing homes.
- In rural communities, highlight the increase in new hospital admissions so residents can do their part to slow the spread.
- Ensure university students continue their mitigation behaviors to ensure no further outbreaks on or off campus as symptomatic cases and cases identified through surveillance testing decline.
- Encourage use of retail establishments that are enforcing mitigation efforts.
- Provide specific mitigation messaging to individuals 65 years and older through senior citizen networks.
- Ensure all hospitals have access to antivirals and antibodies and ensure early use as treatment (within 48 hours).
- Tribal Nations: Ensure aggressive support for testing and isolation and health care delivery systems within appropriate cultural context.
- Specific, detailed guidance on community mitigation measures can be found on the [CDC website](#).

*The purpose of this report is to develop a shared understanding of the current status of the pandemic at the national, regional, state and local levels. We recognize that data at the state level may differ from that available at the federal level. Our objective is to use consistent data sources and methods that allow for comparisons to be made across localities. We appreciate your continued support in identifying data discrepancies and improving data completeness and sharing across systems. We look forward to your feedback.*



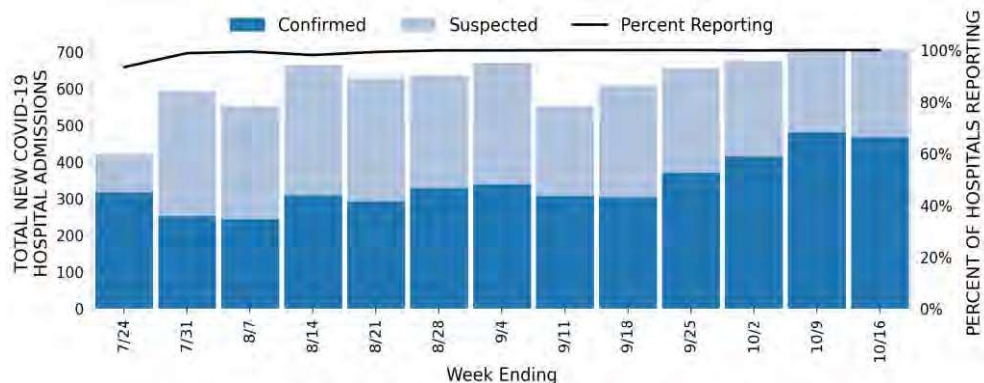
COVID-19



## IOWA

STATE REPORT | 10.18.2020

	STATE, LAST WEEK	STATE, % CHANGE FROM PREVIOUS WEEK	FEMA/HHS REGION, LAST WEEK	UNITED STATES, LAST WEEK
NEW COVID-19 CASES (RATE PER 100,000)	7,512 (238)	+19%	32,702 (231)	383,209 (117)
VIRAL (RT-PCR) LAB TEST POSITIVITY RATE	9.8%	+1.6%*	10.2%	5.4%
TOTAL VIRAL (RT-PCR) LAB TESTS (TESTS PER 100,000)	77,388** (2,453)	-1%**	249,971** (1,768)	7,141,821** (2,176)
COVID-19 DEATHS (RATE PER 100,000)	88 (2.8)	+33%	380 (2.7)	4,931 (1.5)
SNFs WITH ≥1 NEW RESIDENT COVID-19 CASE (≥1 NEW STAFF CASE)	11% (26%)	+1%* (+1%*)	14% (29%)	10% (22%)
SNFs WITH ≥1 NEW RESIDENT COVID-19 DEATH	4%	+0%*	6%	4%

HOSPITAL  
ADMISSIONS

\* Indicates absolute change in percentage points.

\*\* Due to delayed reporting, this figure may underestimate total diagnostic tests and week-on-week changes in diagnostic tests.

**DATA SOURCES** – Additional data details available under METHODS**Note:** Some dates may have incomplete data due to delays in reporting. Data may be backfilled over time, resulting in week-to-week changes.**Cases and Deaths:** State values are calculated by aggregating county-level data from USAFacts; therefore, the values may not match those reported directly by the state. Data is through 10/16/2020; last week is 10/10 - 10/16, previous week is 10/3 - 10/9.**Testing:** CELR (COVID-19 Electronic Lab Reporting) state health department-reported data through 10/14/2020. Last week is 10/8 - 10/14, previous week is 10/1 - 10/7.**SNFs:** Skilled nursing facilities. National Healthcare Safety Network. Data are reported separately for cases among residents and staff. Last week is 10/5-10/11, previous week is 9/28-10/4. Facilities that are undergoing reporting quality review are not included in the table, but may be included in other NHSN analyses.**Hospitalizations:** Unified hospitalization dataset in HHS Protect. These data exclude psychiatric, rehabilitation, and religious non-medical hospitals. In addition, hospitals explicitly identified by states/regions as those from which we should not expect reports were excluded from the percent reporting figure.



## IOWA

STATE REPORT | 10.18.2020

## COVID-19 COUNTY AND METRO ALERTS\*

Top 12 shown in table (full lists below)

	METRO AREA (CBSA) LAST WEEK	COUNTY LAST WEEK
LOCALITIES IN RED ZONE	<b>10</b> ▲ (+2) Sioux City Dubuque Waterloo-Cedar Falls Burlington Carroll Storm Lake Oskaloosa Spirit Lake Spencer Pella	<b>49</b> ▲ (+11) Woodbury Dubuque Pottawattamie Sioux Black Hawk Plymouth Des Moines Carroll Harrison Delaware Crawford Buena Vista
LOCALITIES IN ORANGE ZONE	<b>6</b> ▲ (+3) Des Moines-West Des Moines Omaha-Council Bluffs Davenport-Moline-Rock Island Clinton Ottumwa Fairfield	<b>19</b> ▲ (+4) Scott Dallas Henry Clinton Jasper Warren Kossuth Boone Wapello Mills Buchanan Fayette
LOCALITIES IN YELLOW ZONE	<b>6</b> ▼ (-4) Cedar Rapids Ames Fort Dodge Fort Madison-Keokuk Muscatine Marshalltown	<b>21</b> ▼ (-7) Polk Linn Webster Story Lee Muscatine Washington Marshall Madison Clayton Cedar Hancock
Change from previous week's alerts:      ▲ Increase      ■ Stable      ▼ Decrease		

**All Red Counties:** Woodbury, Dubuque, Pottawattamie, Sioux, Black Hawk, Plymouth, Des Moines, Carroll, Harrison, Delaware, Crawford, Buena Vista, O'Brien, Lyon, Mahaska, Tama, Benton, Jackson, Dickinson, Iowa, Clay, Marion, Emmet, Hardin, Jones, Guthrie, Cherokee, Bremer, Cass, Hamilton, Winnebago, Wright, Palo Alto, Taylor, Humboldt, Osceola, Union, Monroe, Shelby, Fremont, Appanoose, Montgomery, Grundy, Adair, Howard, Audubon, Clarke, Ringgold, Lucas

**All Orange Counties:** Scott, Dallas, Henry, Clinton, Jasper, Warren, Kossuth, Boone, Wapello, Mills, Buchanan, Fayette, Sac, Winneshiek, Chickasaw, Butler, Jefferson, Davis, Wayne

**All Yellow Counties:** Polk, Linn, Webster, Story, Lee, Muscatine, Washington, Marshall, Madison, Clayton, Cedar, Hancock, Monona, Calhoun, Floyd, Ida, Allamakee, Decatur, Louisa, Van Buren, Mitchell

\* Localities with fewer than 10 cases last week have been excluded from these alerts.

**Note:** Lists of red, orange, and yellow localities are sorted by the number of new cases in the last 3 weeks, from highest to lowest. Some dates may have incomplete data due to delays in reporting. Data may be backfilled over time, resulting in week-to-week changes.

**DATA SOURCES** – Additional data details available under METHODS

**Cases and Deaths:** State values are calculated by aggregating county-level data from USAFacts; therefore, the values may not match those reported directly by the state. Data is through 10/16/2020; last week is 10/10 - 10/16, three weeks is 9/26 - 10/16.

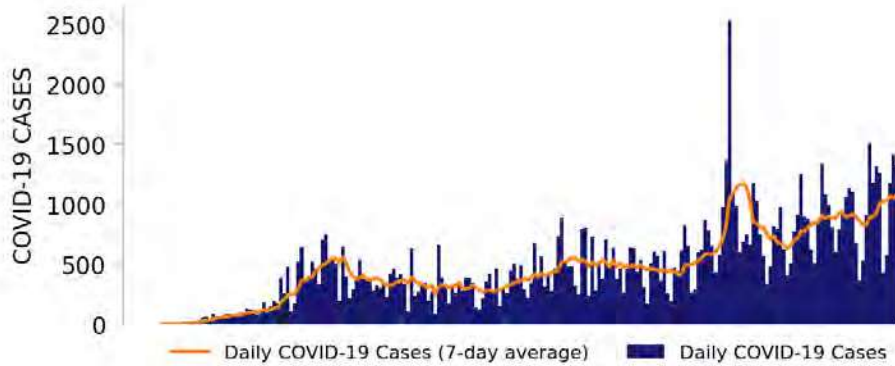
**Testing:** CELR (COVID-19 Electronic Lab Reporting) state health department-reported data through 10/14/2020. Last week is 10/8 - 10/14.



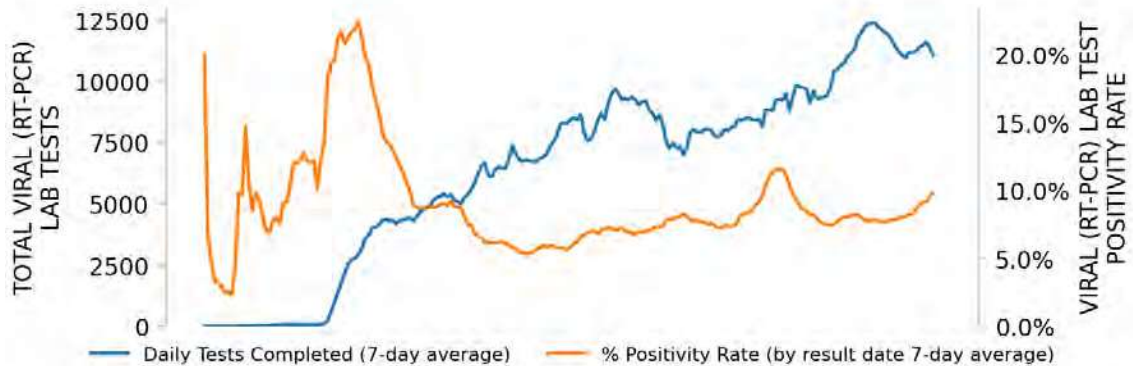
# IOWA

STATE REPORT | 10.18.2020

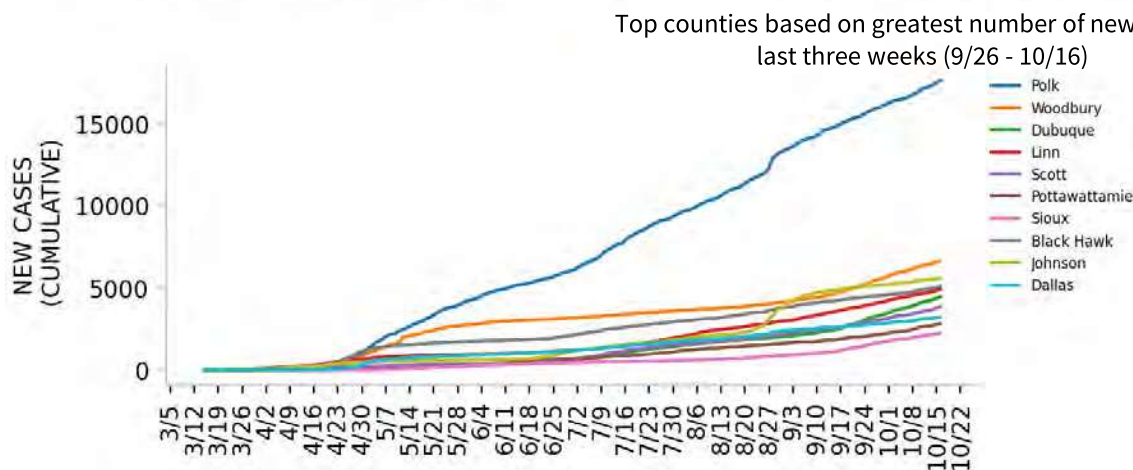
## NEW CASES



## TESTING



## TOP COUNTIES



### DATA SOURCES – Additional data details available under METHODS

**Note:** Some dates may have incomplete data due to delays in reporting. Data may be backfilled over time, resulting in week-to-week changes.

**Cases:** State values are calculated by aggregating county-level data from USAFacts; therefore, the values may not match those reported directly by the state. Data is through 10/16/2020.

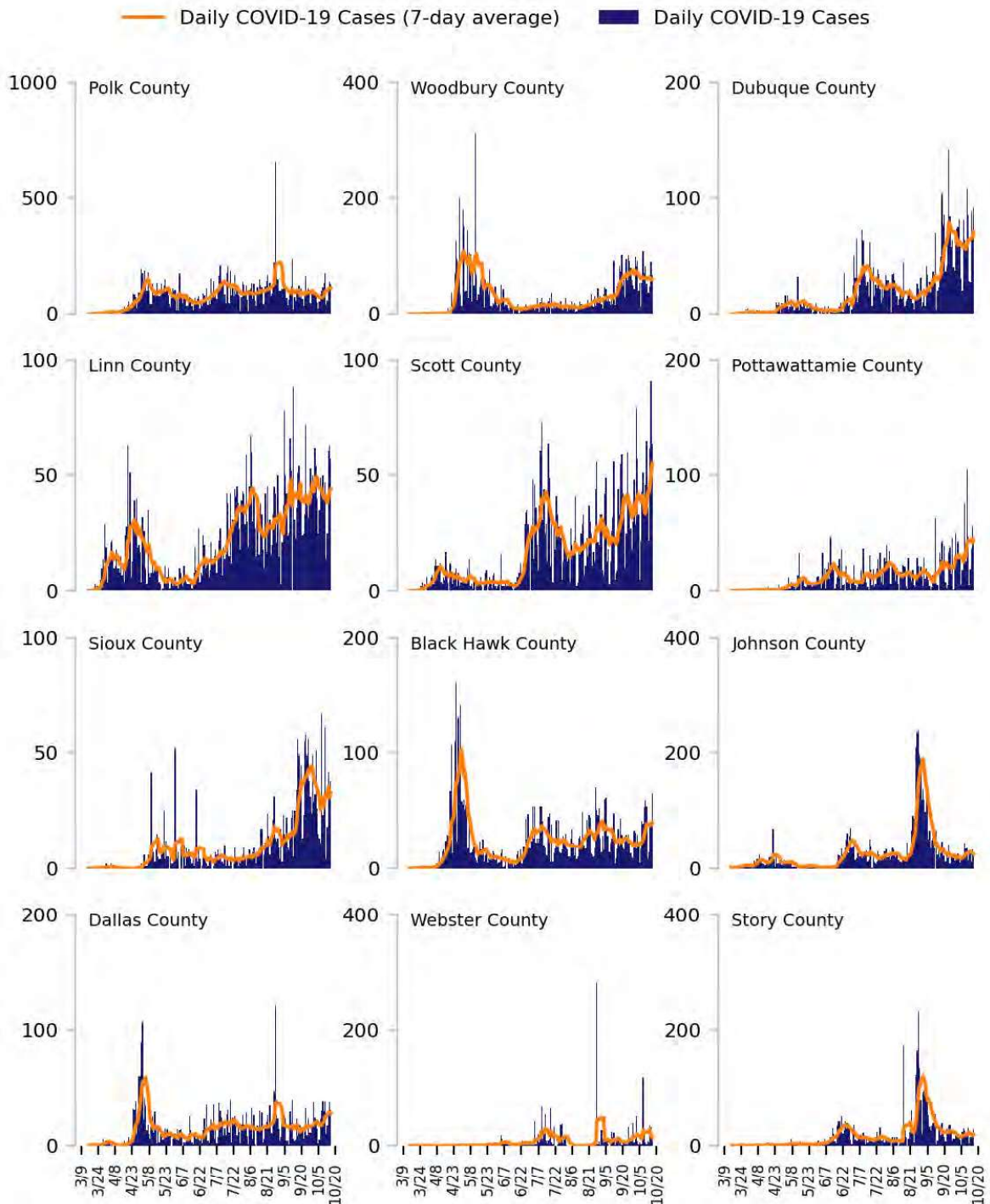
**Testing:** CELR (COVID-19 Electronic Lab Reporting) state health department-reported data through 10/14/2020.





## Top 12 counties based on number of new cases in the last 3 weeks

TOTAL DAILY CASES



**DATA SOURCES** – Additional data details available under METHODS

**Cases:** State values are calculated by aggregating county-level data from USAFacts; therefore, the values may not match those reported directly by the state. Data is through 10/16/2020. Last 3 weeks is 9/26 - 10/16.

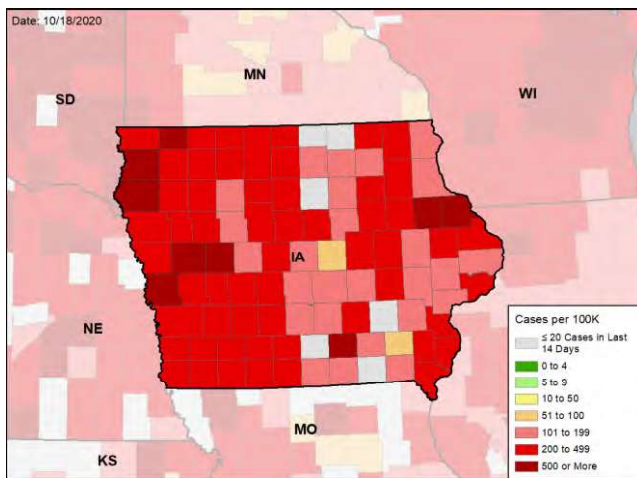


# IOWA

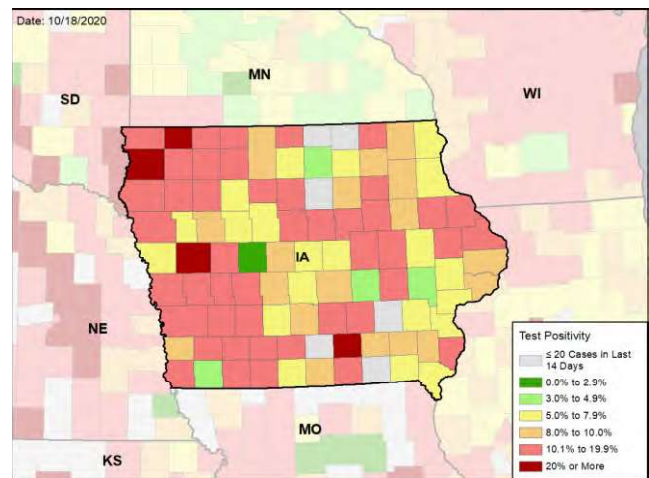
STATE REPORT | 10.18.2020

## CASE RATES AND VIRAL LAB TEST POSITIVITY DURING THE LAST WEEK

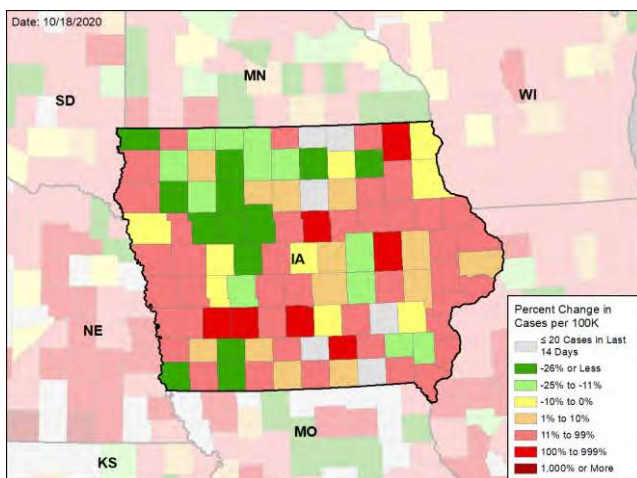
### NEW CASES PER 100,000 DURING THE LAST WEEK



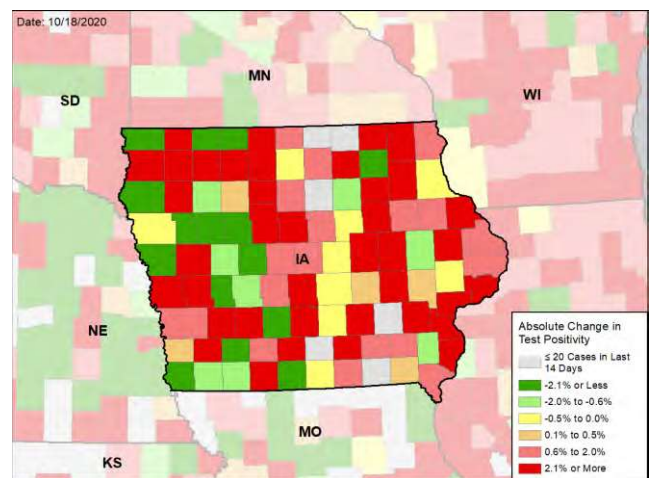
### VIRAL (RT-PCR) LABORATORY TEST POSITIVITY DURING THE LAST WEEK



### WEEKLY CHANGE IN NEW CASES PER 100,000



### WEEKLY CHANGE IN VIRAL (RT-PCR) LABORATORY TEST POSITIVITY



#### DATA SOURCES – Additional data details available under METHODS

**Note:** Some dates may have incomplete data due to delays in reporting. Data may be backfilled over time, resulting in week-to-week changes.

**Cases:** State values are calculated by aggregating county-level data from USAFacts; therefore, the values may not match those reported directly by the state. Data is through 10/16/2020. Last week is 10/10 - 10/16, previous week is 10/3 - 10/9.

**Testing:** CELR (COVID-19 Electronic Lab Reporting) state health department-reported data through 10/14/2020. Last week is 10/8 - 10/14, previous week is 10/1 - 10/7.