



ifalls
Iowa Falls and Alden Community School Districts

LEARNING
LEADING
SUCCEEDING

IOWA FALLS COMMUNITY SCHOOL DISTRICT BOND REFERENDUM

VOTE: MARCH 2, 2021

ABSENTEE BALLOT REQUEST DEADLINE: FEBRUARY 19, 2021



WHAT IS BEING ASKED?

On March 2, 2021 patrons of the Iowa Falls Community School District will be asked to go to the polls to grant permission to issue capital loan notes in an amount not to exceed \$28,560,000.00 to fund the construction and furnishing of a new elementary school building and additions and improvements to the existing high school building.



HOW DID WE GET HERE?

The proposed bond referendum is the result of an extensive year-long facilities study conducted by the Iowa Falls School Board and Iowa Falls Facilities Planning Committee. The forty member committee consisted of parents, school staff, and community members that learned the facility needs of all the District's existing buildings.

A strategic prioritization of needs included an in-depth cost/benefit evaluation of options to renovate existing school buildings, construct new additions to existing school buildings, and/or to construct new school building(s).

Ultimately, the Board and Committee concluded that the best strategic, and most fiscally responsible way forward was to

construct a new elementary school and new additions at the high school. This decision allows for the correction of physical and environmental concerns:



Improved Student Classroom Learning



Improved Personalized Learning



Improved Learning Climate



Improved Efficiency



Improved Safety and Security

CHALLENGES AND SOLUTIONS



Challenge: Limited classroom space that does not allow for modernized curriculum like hands-on learning spaces and capacity for interactive technology integration.



Improved Student Classroom Learning:

Larger and appropriately designed classrooms that enhance student collaboration and teacher flexibility to effectively deliver 21st Century Curriculum.



Challenge: Lack of collaboration and individual instruction spaces. Two schools reduce collaboration ability between grade-level teachers.



Improved Personalized Learning:

Break out spaces would allow for small group and individualized instruction. Classroom layout in grade "pods" enables teamwork and performance between all grade-level teachers and support staff.

WEBSITE TO LEARN MORE: <https://sites.google.com/ifacadets.net/buildingproject>

LEARNING • LEADING • SUCCEEDING

CHALLENGES AND SOLUTIONS - CONTINUED



Challenge: Original heating systems are failing in the elementary schools.



Improved Learning Climate:

The heating systems in the elementary schools would be replaced by new heating, ventilation, and air conditioning systems that are energy-efficient and will improve student and staff comfort and air quality.



Challenge: Multiple academic campuses reduce ability to share resources and expanded learning opportunities.



Improved Efficiency:

By virtue of a new elementary school at the high school campus the new band room and auxiliary gym would be shared by both schools; bus transportation would be streamlined as there would be less locations to shuttle students to/from; the District would have one less campus to maintain. Expansion of High School mentorship program.

Iowa Falls School Building History Timeline

1935 - Pineview Elementary Built

1936 - End of the Dust Bowl

1938 - Rock Run Elementary Built

1945 - WWII Ends

1955 - Pineview North Wing Addition

1969 - Moon Landing - Neil Armstrong

1999 - Pineview West Wing Addition

2007 - Apple introduces the first iPhone

EXISTING STATE OF BUILDINGS



Limited Lunch Seating



Library Lacks Storage



No Breakout Areas In Classroom



Restroom / Locker Facilities Aged



School Entrances Open To Public



Heating Systems Aged Beyond Expected Use

WEBSITE TO LEARN MORE: <https://sites.google.com/ifacadets.net/buildingproject>

WHAT IS INCLUDED IN THE PROPOSED PLAN?

A New Pre-K/5th Grade Elementary School on the same site as Iowa Falls-Alden High School that would combine the students of Pineview and Rock Run Elementary.

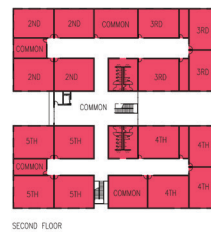
Iowa Falls - Alden High School Additions:

- New Band Room
- New Art Room
- New Shop
- New Auxiliary Gym (Shared with New Elementary)

Bond Election/Project Timeline

Feb. 19, 2021	Absentee Ballot Request Deadline
March 2, 2021	Bond Election Held
March 2021	Begin Design Plans and Specs
December 2021	Construction Plans Out For Bid
February 2022	Construction Begins
July 2023	Construction Complete
August 2023	New Elementary Begins School Year

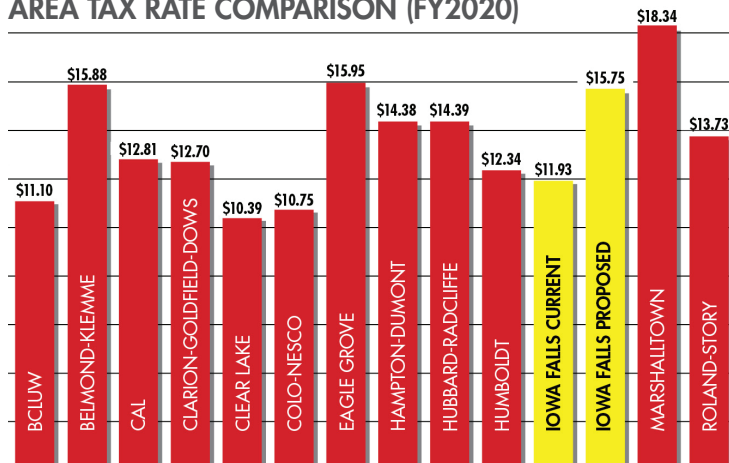
- LOWER EDUCATION
- UPPER EDUCATION
- FLEX/RESOURCE
- LIBRARY
- ADMINISTRATIVE
- CAFETERIA/KITCHEN/ELEMENTARY ART
- GYMNASIUM
- HIGH SCHOOL BAND/ART/SHOP
- VISITOR LOOKER
- EXISTING BUILDING



1 FLOOR AND SEE PLAN
SCALE: 1/32" = 1'-0"



AREA TAX RATE COMPARISON (FY2020)



IF THE REFERENDUM PASSES, HOW MUCH WILL PROPERTY TAXES INCREASE?

RESIDENTIAL PROPERTY

\$15.99/Month/\$100,000 Assessed Value
(Estimated monthly increase per home per \$100,000 assessed value)

AGRICULTURAL PROPERTY

\$0.38/Month/Acre
(Estimated monthly increase per agricultural acre)

COMMERCIAL PROPERTY

\$28.65/Month/\$100,000 Assessed Value
(Estimated monthly increase per commercial property per \$100,000 assessed value)

WEBSITE TO LEARN MORE: <https://sites.google.com/ifacadets.net/buildingproject>



FREQUENTLY ASKED QUESTIONS

Q: How will this impact education at Iowa Falls CSD?

A: This building project will allow our Elementary Students to have appropriate-sized classrooms that will enable students to work with teachers, peers and independent work time without the fear of overcrowding. Proposed classroom "Pods" will allow teachers to collaborate as grade-level teams to best meet the needs of all of our students. The central location of all of our elementary students will enable teams to work with all grade levels to develop a more complete educational experience that fosters daily collaborative opportunities for our staff.

Our elementary students will also benefit from increased air quality and consistent classroom temperatures (compared to our hot classrooms in the summer and sometimes cold classrooms in the winter). Our High School students will benefit from larger Fine Arts spaces (Band, Art) that meet the needs of our growing programs and will have more access to Career and Technical Education Opportunities with the additional shop. Locating the Elementary school at the High School will also provide an auxiliary gym for after school events.

Q: What will happen to the existing elementary buildings?

A: The school district is currently working with several groups for the future use of each property. Every option will be considered to best meet the needs of the school district and community. The gymnasium at Rock Run is still an important asset to the district and we are identifying ways to best use this space in the future. The board will ask for community input for these spaces, as well as continuing to work with local organizations, to help identify the best possible uses for the land and buildings in the future.

Q: How will this project improve safety and security?

A: The new elementary school will have limited access to the building requiring visitors to first check in at the office before entering the school. Both current locations allow visitors access to the entire building without having to first walk into the office. The new gymnasium and cafeteria will also be accessible to organizations after hours without having access to the main academic wing of our building.

Additional inquiries may be made to:
Tony Neumann, Superintendent
tneumann@ifacadets.net
(641) 648 - 6400 ext. 1200

Q: Is now the best time to do this? Has the board considered the economic impact caused by the pandemic?

A: The school board and facility committee have been very mindful of the economic impact caused by the current pandemic. One of the positive outcomes of the global pandemic has been falling interest rates. Compared to last year at this time, the school would be able to levy five-million more dollars with the lowered interest rate. This means that more public funds would be used for a direct impact on our students instead of paying off a higher interest amount.

Q: Why are we looking at a whole new building instead of fixing the HVAC issues we have now?

A: While fixing the HVAC in both elementaries is a top priority, it is not the only concern we are addressing with this proposed project. We have multiple space concerns (classrooms are undersized, Pineview does not have an appropriate sized gym, cafeterias are small in both buildings, collaborative space is lacking, etc) that this project will correct that is not possible with our current facilities.

If we tried to improve classroom sizes at our current sites, we would need to add on to both buildings, remodel existing classrooms and try not to disturb the learning environment while this is all progressing. Construction at the High School allows for limited to no disruption to the learning environments and more flexibility in the scope of the project. Renovations of existing rooms would be limited by existing infrastructure and time.

Visit <https://sites.google.com/ifacadets.net/buildingproject/faq> to see more FAQs.

☒ VOTING DAY INFORMATION

March 2, 2021 Voting Locations:

- **Iowa Falls #1:** Barlow Memorial Library
- **Iowa Falls #2:** Iowa Falls Fire Station
- **Hardin/Ellis/Jackson/ETNA/Clay:** Ellsworth Equine Center
- **Franklin County:** Bradford Community Center

Any registered voter in the Iowa Falls Community School District is eligible to vote. Request your absentee ballot at:
www.hardincountyia.gov/272/Obtaining-An-Absentee-Ballot

WEBSITE TO LEARN MORE: <https://sites.google.com/ifacadets.net/buildingproject>