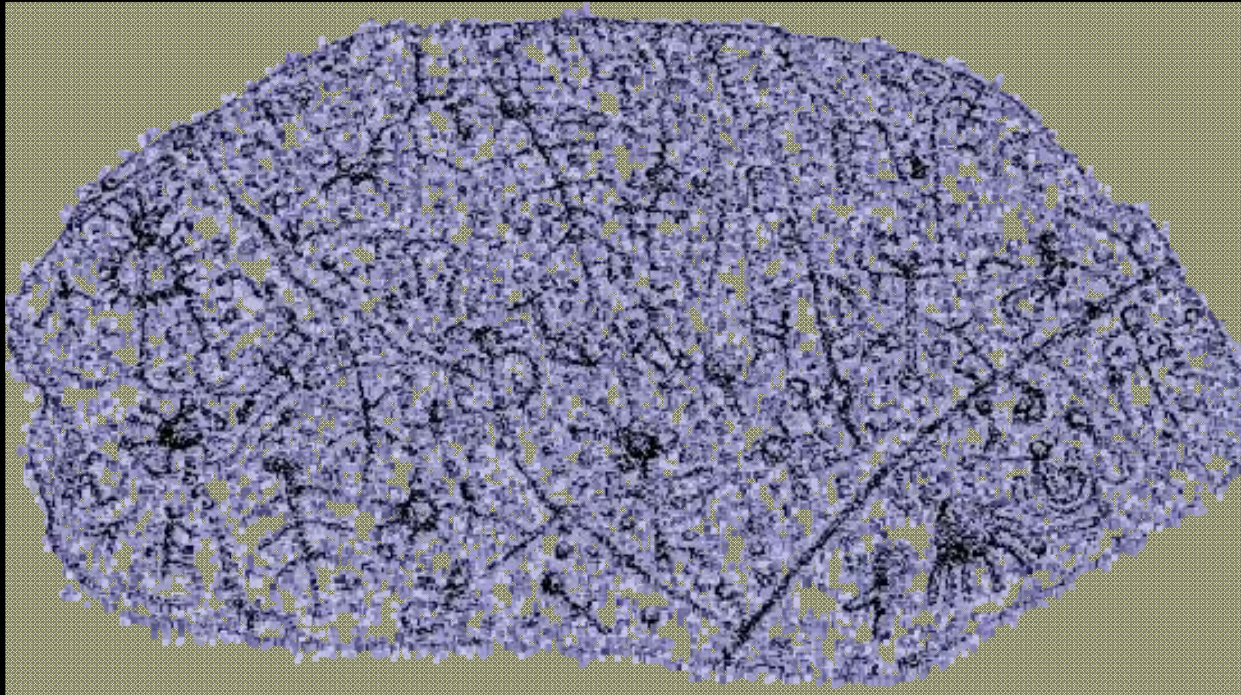


The Cherokee's 'Tsul kālū', and the Judaculla Rock Petroglyphs of Western North Carolina

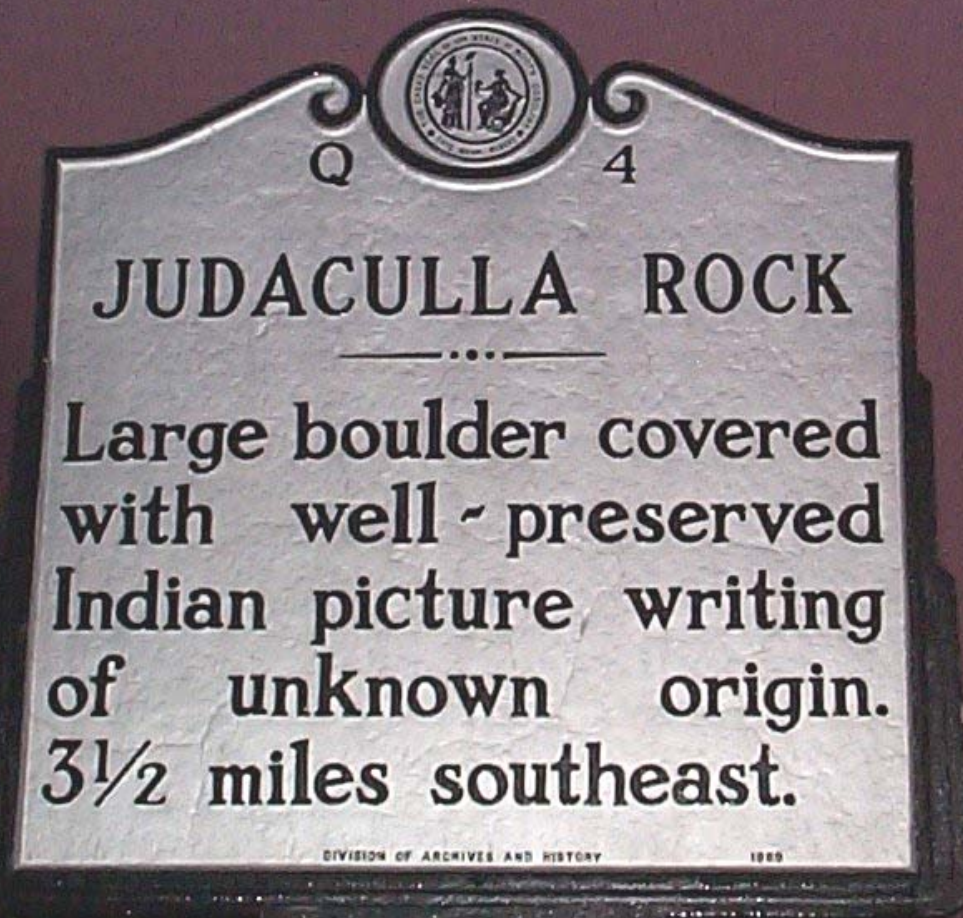


Scott Ashcraft
Archaeologist
Pisgah National Forest
N.C. Rock Art Project
sashcraft@fs.fed.us
828-231-7564



Lorie Hansen
N.C. Rock Art Project
Project Director
lhansen39@mchsi.com
828-697-6187

North Carolina Historic Sites Marker

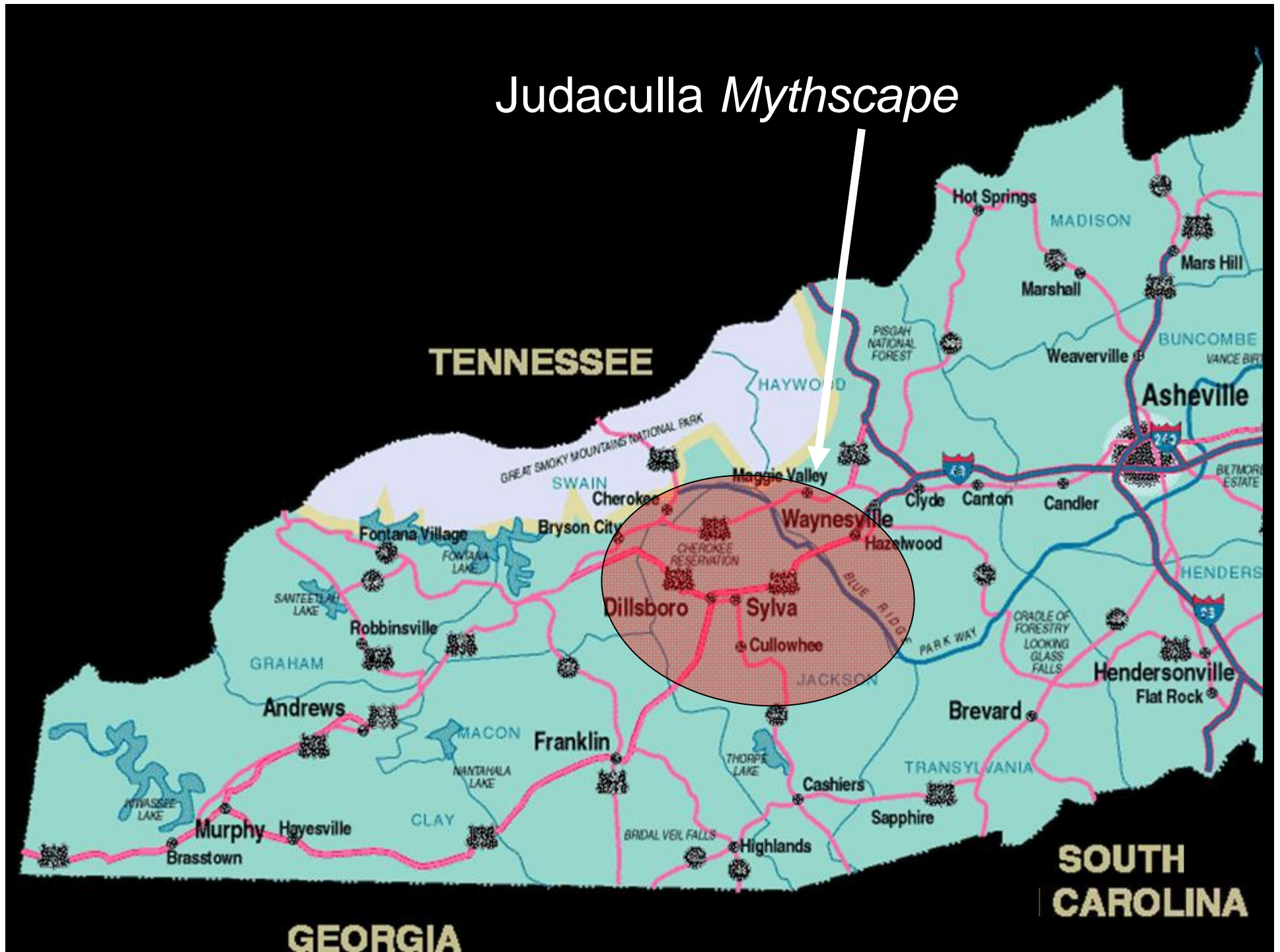


JUDACULLA ROCK- COMPOSITE NIGHT-TIME PHOTOGRAPH

Loubser, 2008



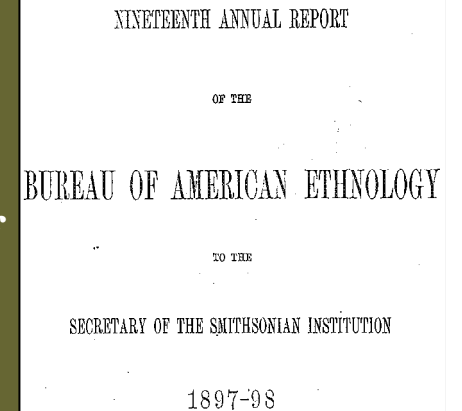
Judaculla Mythscape



Cherokee Medicine Man Swimmer, 1888



Ethnologist James
Mooney and his
*History, Myths, and
Sacred Formulas of
the Cherokees*



Judaculla = Anglicized
version of *Tsul kālū'*



Tsul kǎlū' means "*He has them slanting*"
Referring to the eyes.

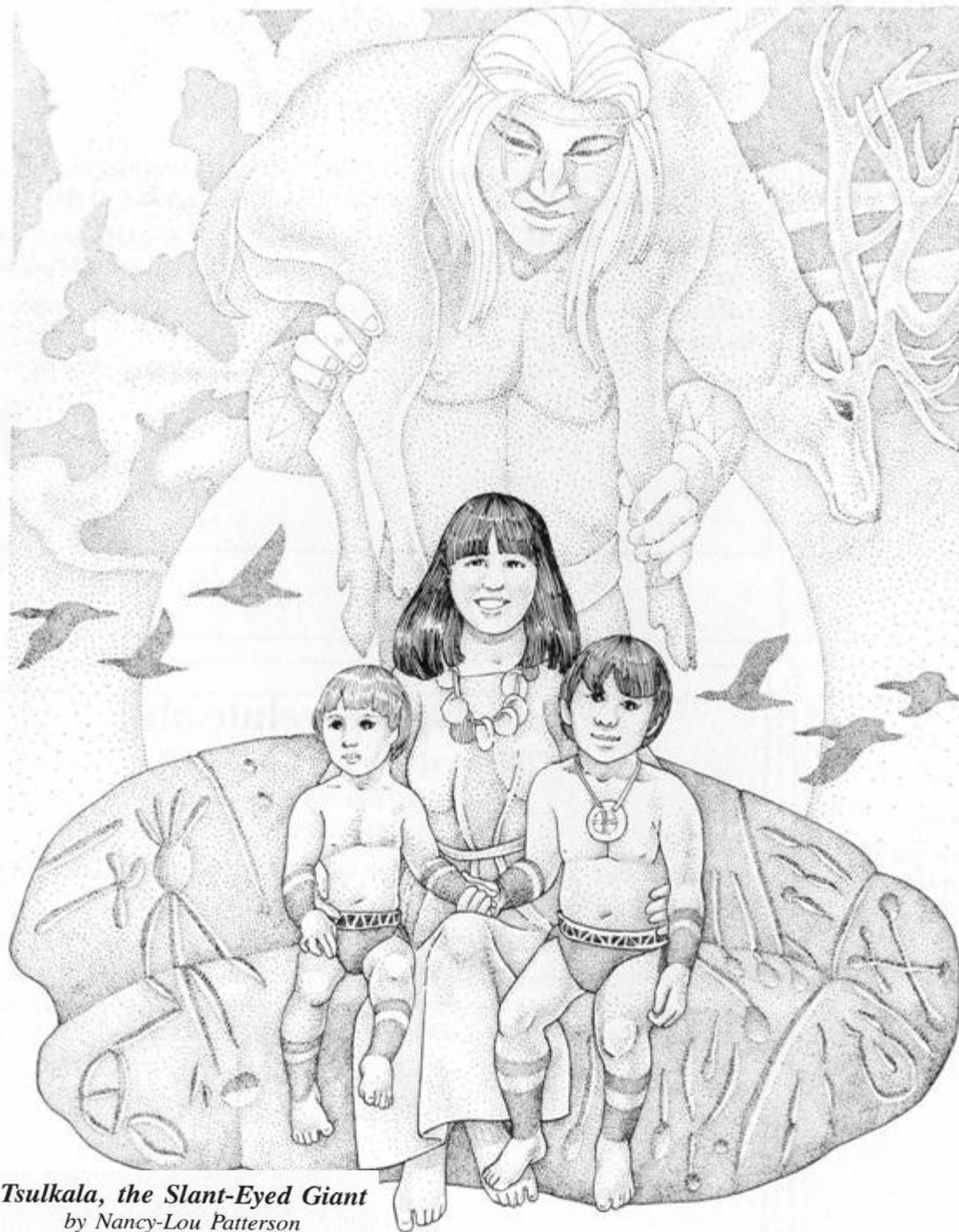


Tsulkala, the Slant-Eyed Giant
by Nancy-Lou Patterson

Near the Great Divide, between the waters of Pigeon river and French Broad, is situated the Devil's Court-house, which rises to an altitude of 6,049 feet. Near it is Court-house mountain. At both places his Satanic majesty was believed to sit in judgment, and doom to punishment all who had been wayward in courage, or had departed from a strict code of virtue, though bravery in war atoned for a multitude of sins.



**Frightful
Cherokee
mask with
slanted
eyes**



SEVEN CHEROKEE MYTHS



Creation, Fox, the Immortal Parents,
the Nature of Evil, the Family, Universal
Suffering, and Communal Obligation

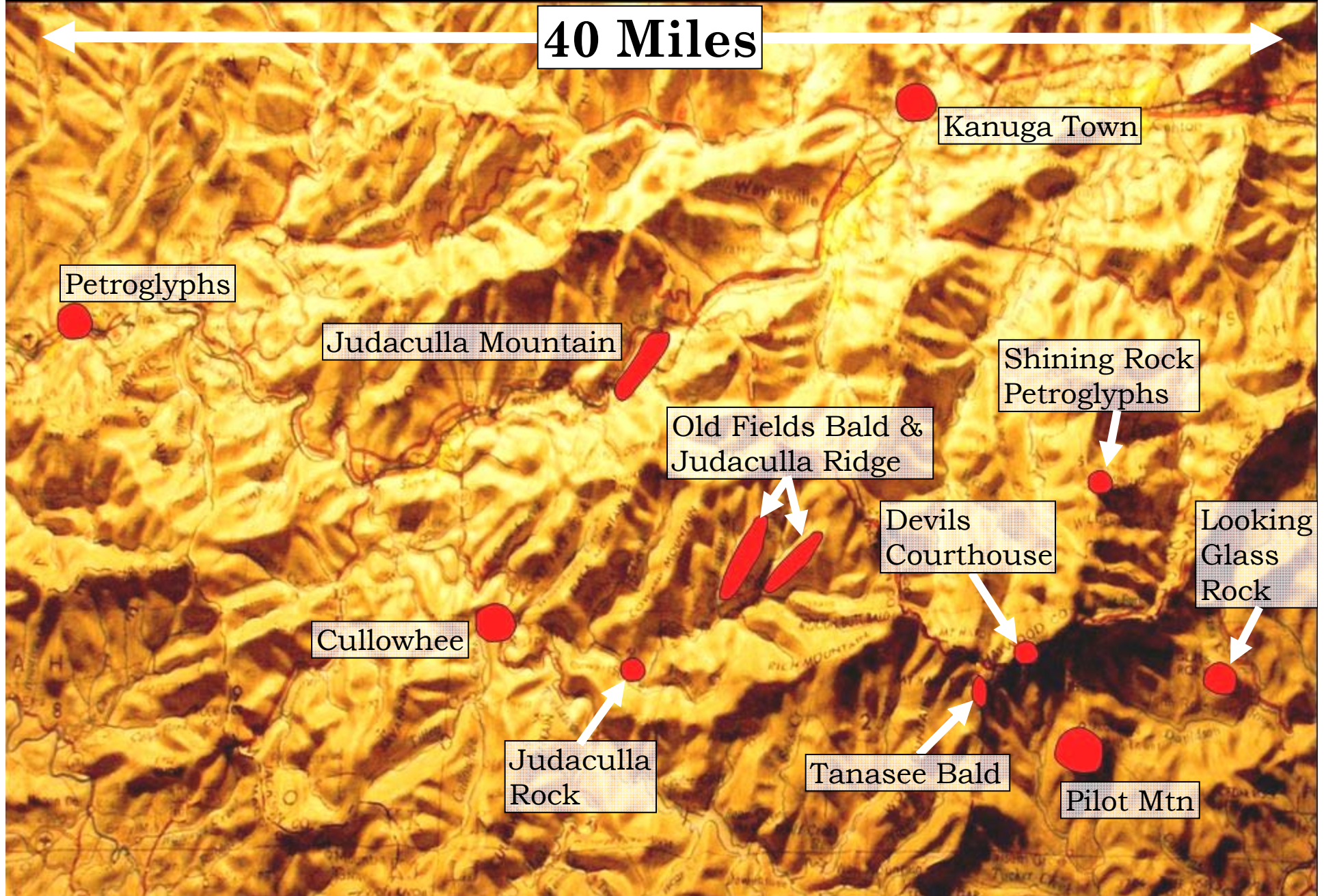
G. Keith Parker

Foreword by James D. G. Hunt and Paul F. Bowers



Judaculla *Mythscape* – Landscape & Legend

40 Miles

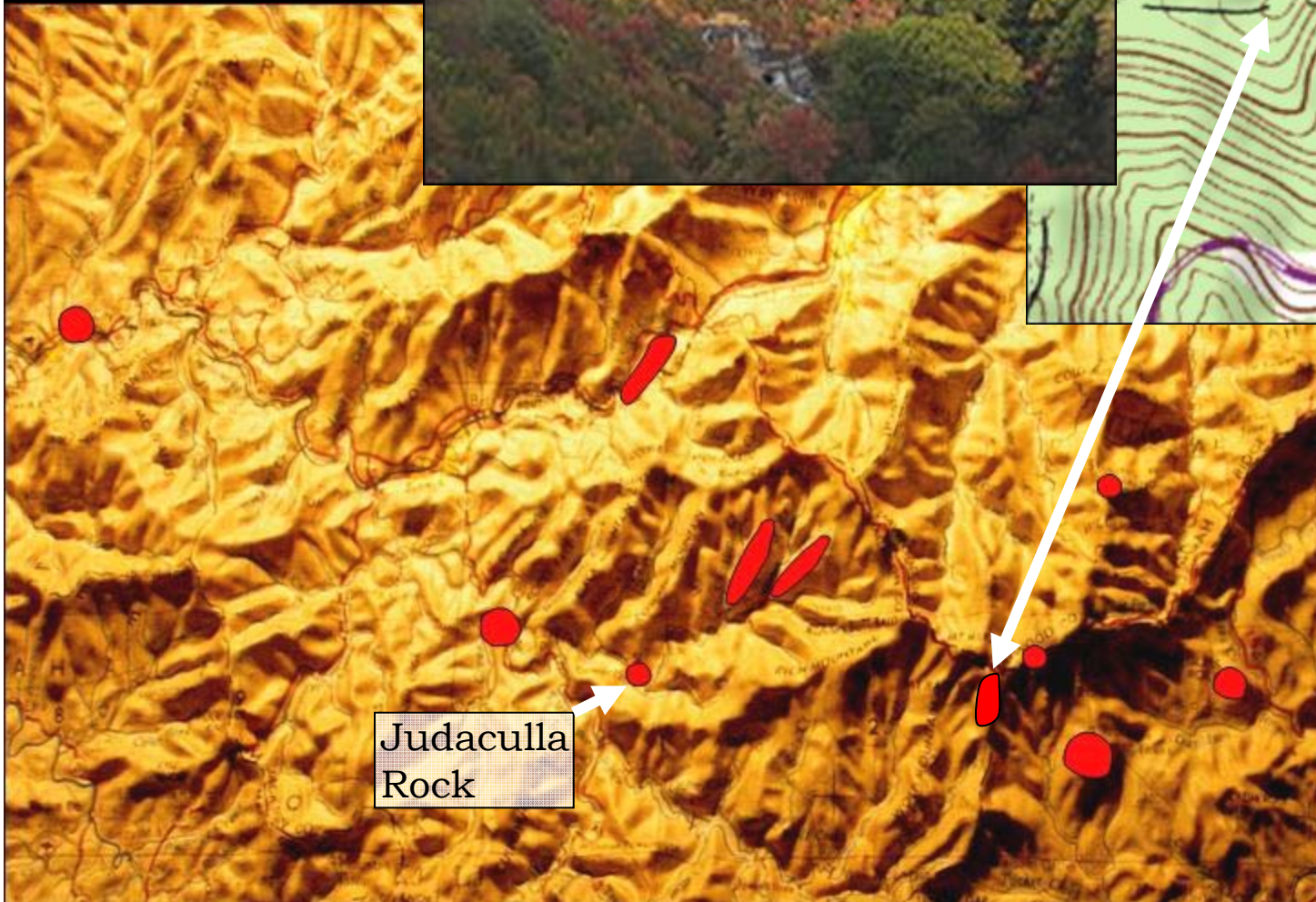
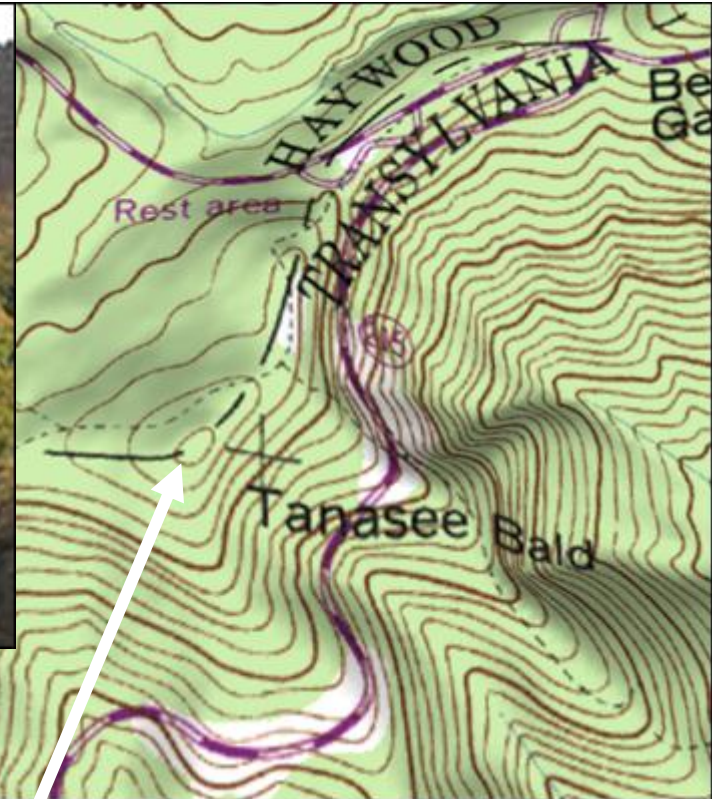


Tanasee Bald

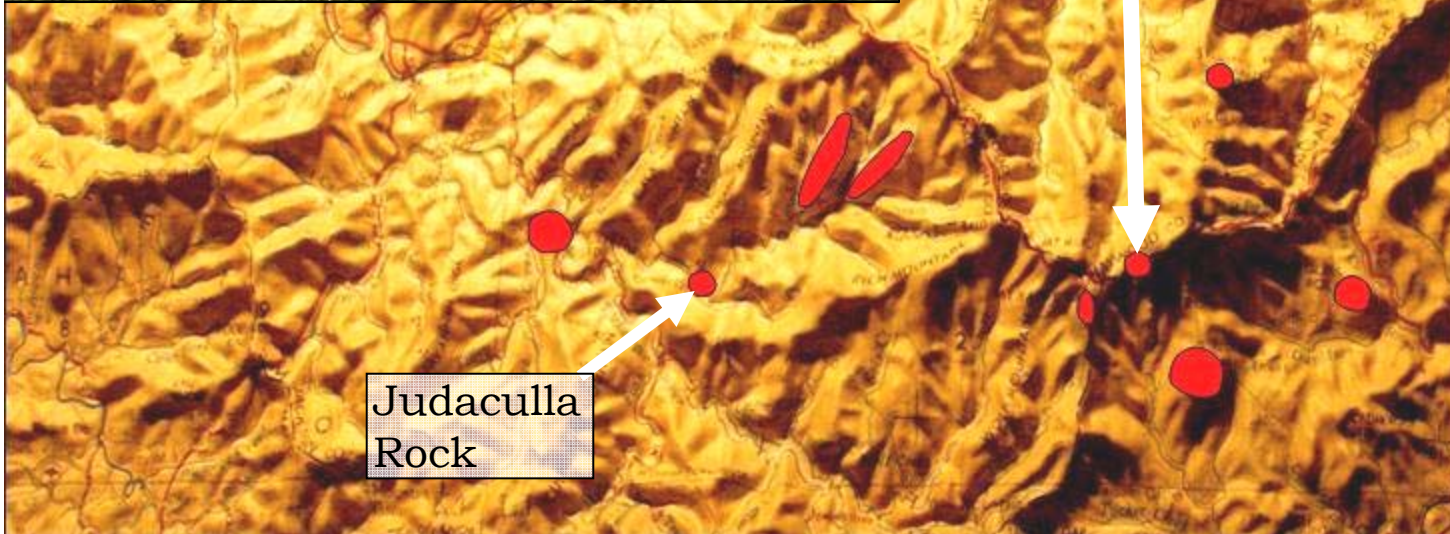
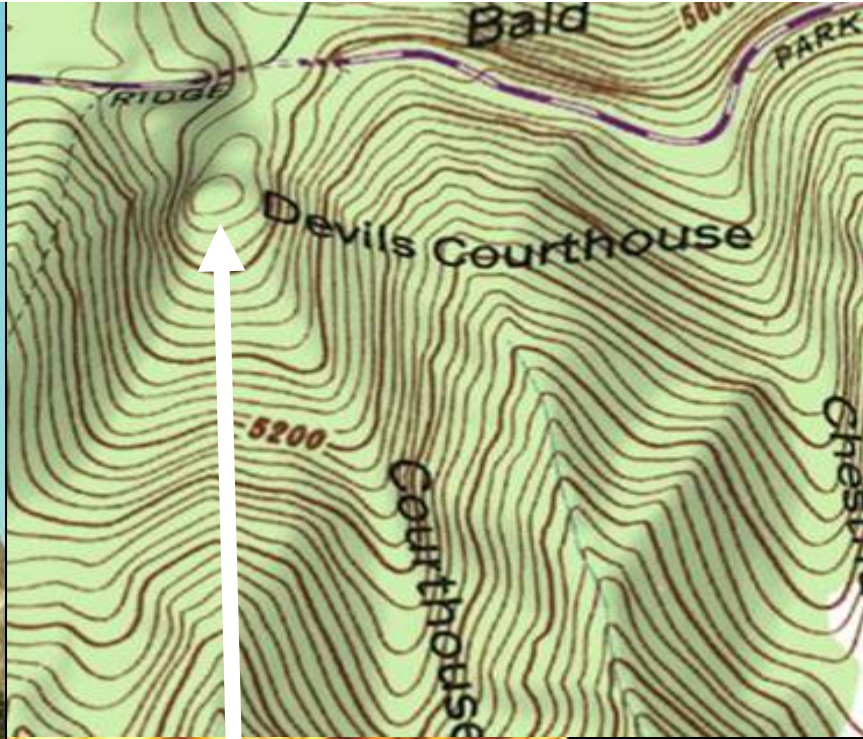
(Tsul Kalu
Tsunegun'yi)

aka

Judaculla
Old Fields



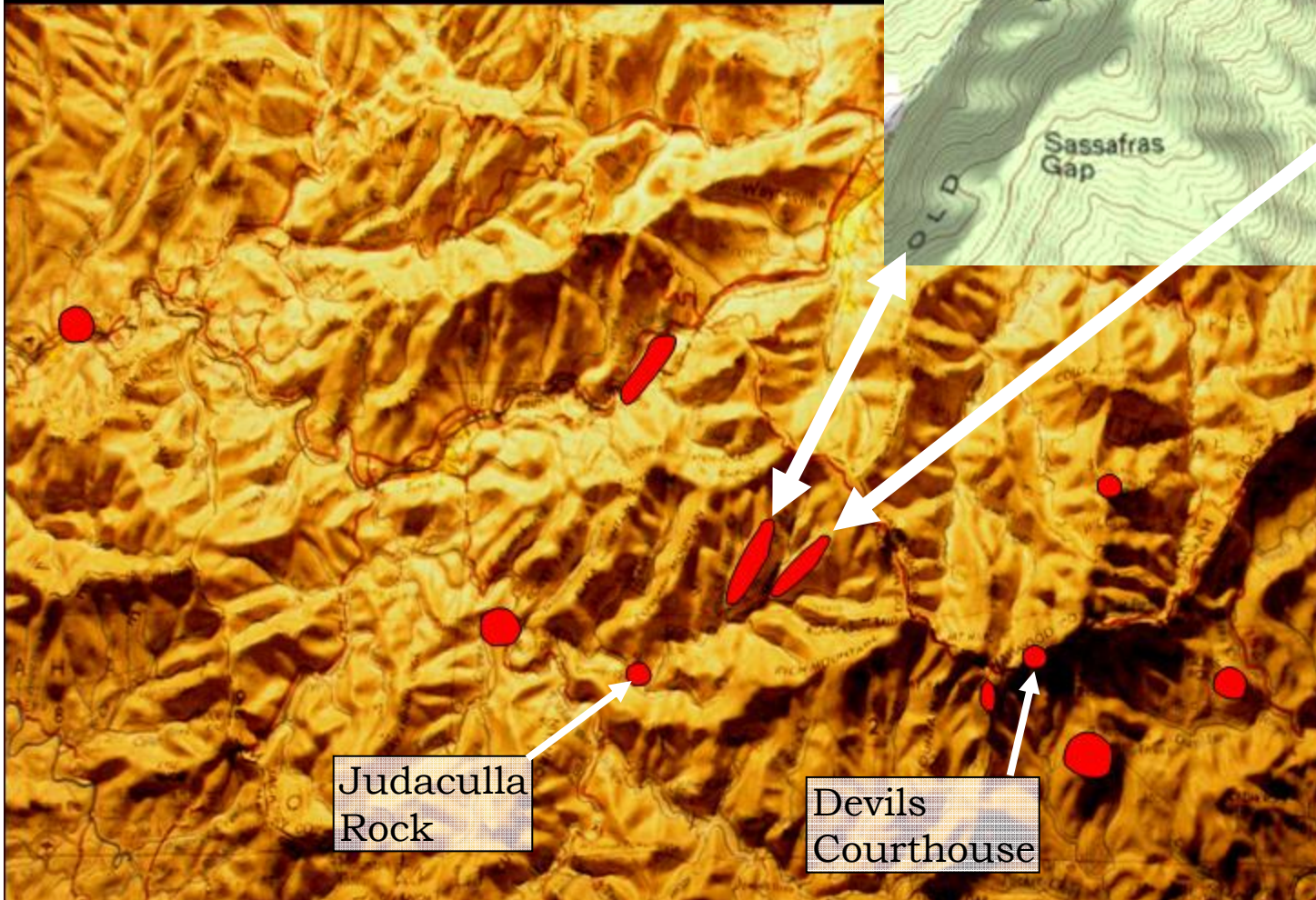
Judaculla
Rock

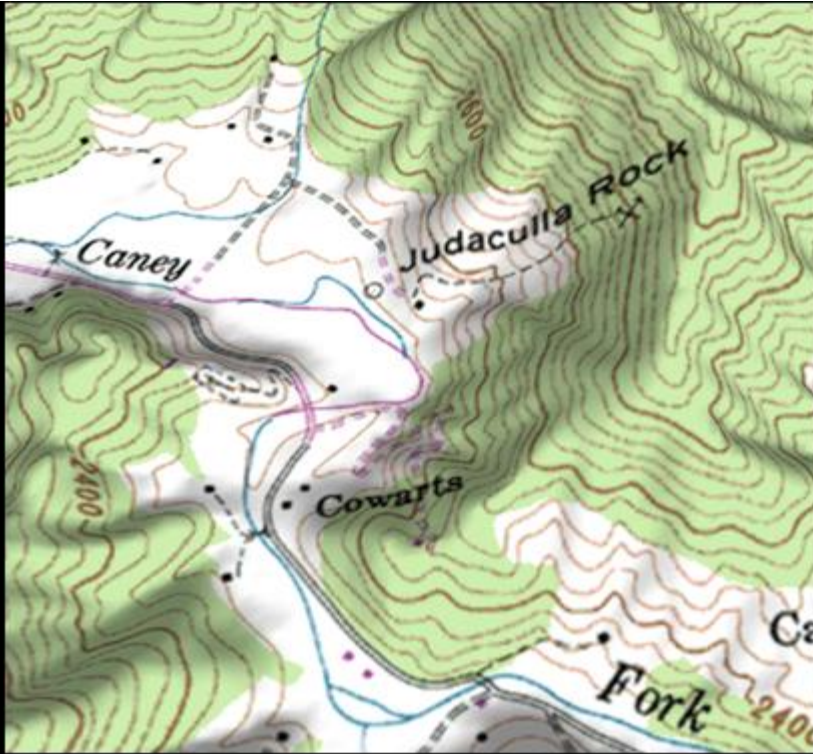


**Judaculla's
Judgment
Seat
aka
Devils
Courthouse**

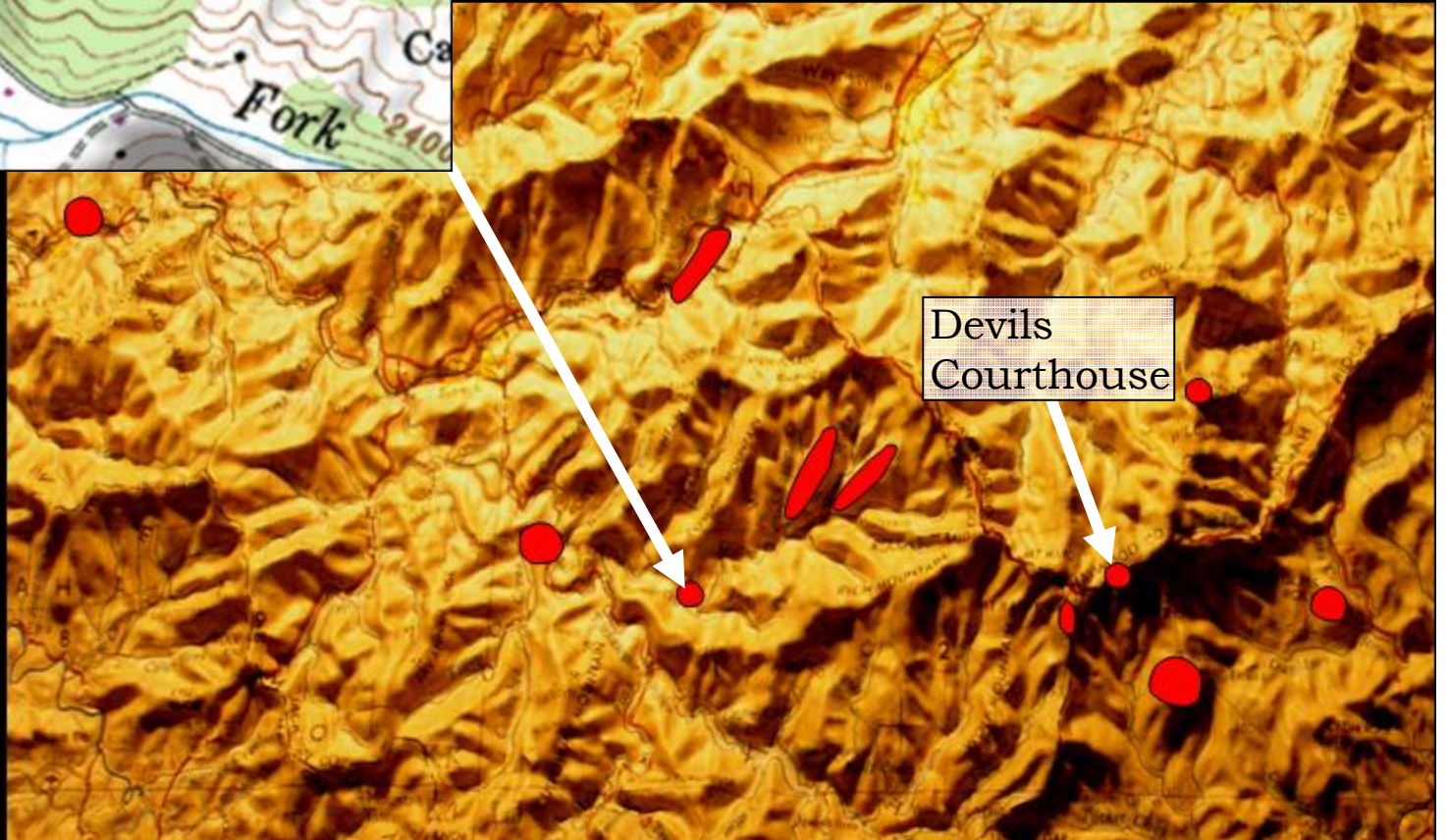
Old Bald Ridge & Judaculla Ridge

Also- Judaculla Old Fields



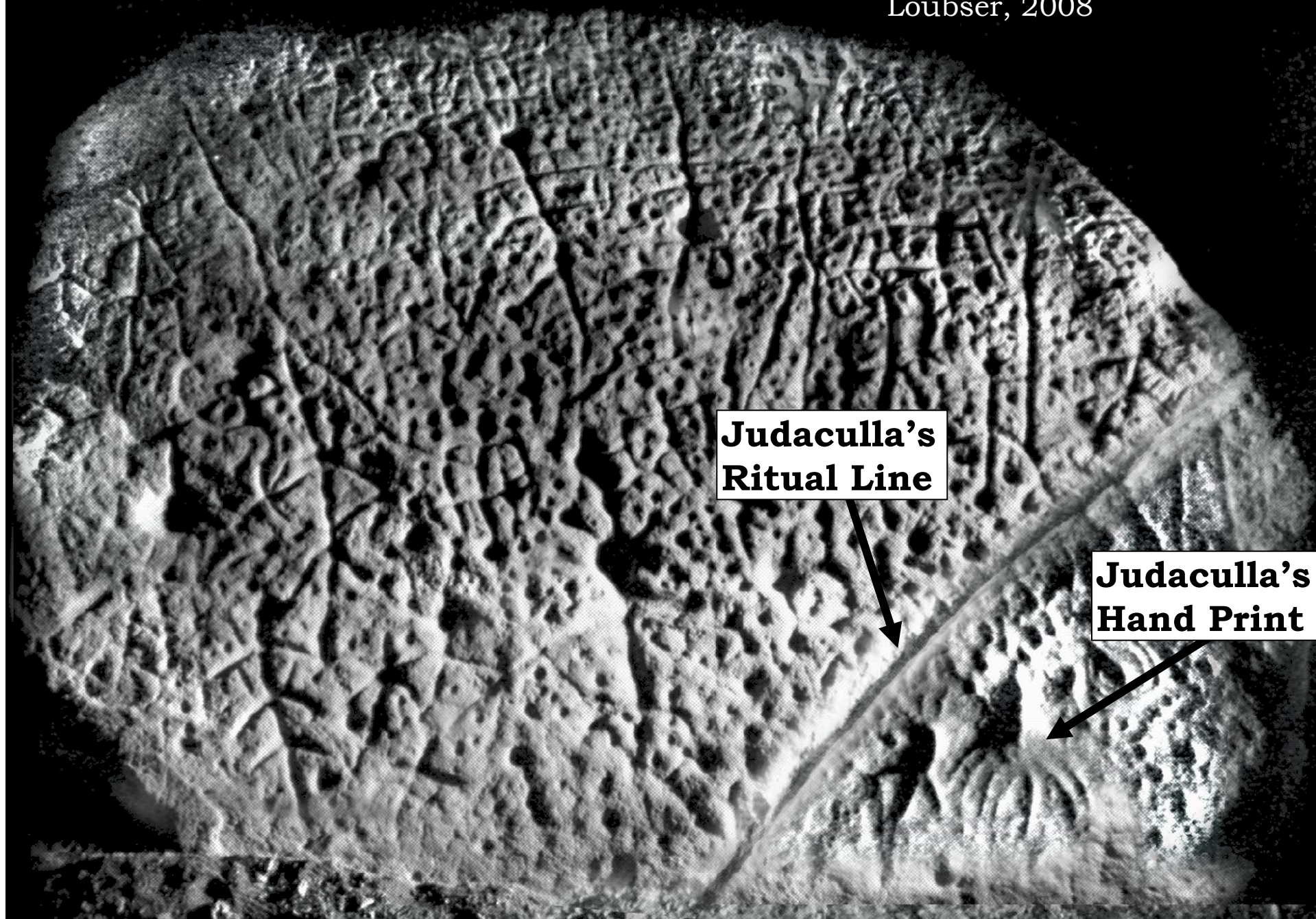


Judaculla Rock



JUDACULLA ROCK- COMPOSITE NIGHT-TIME PHOTOGRAPH

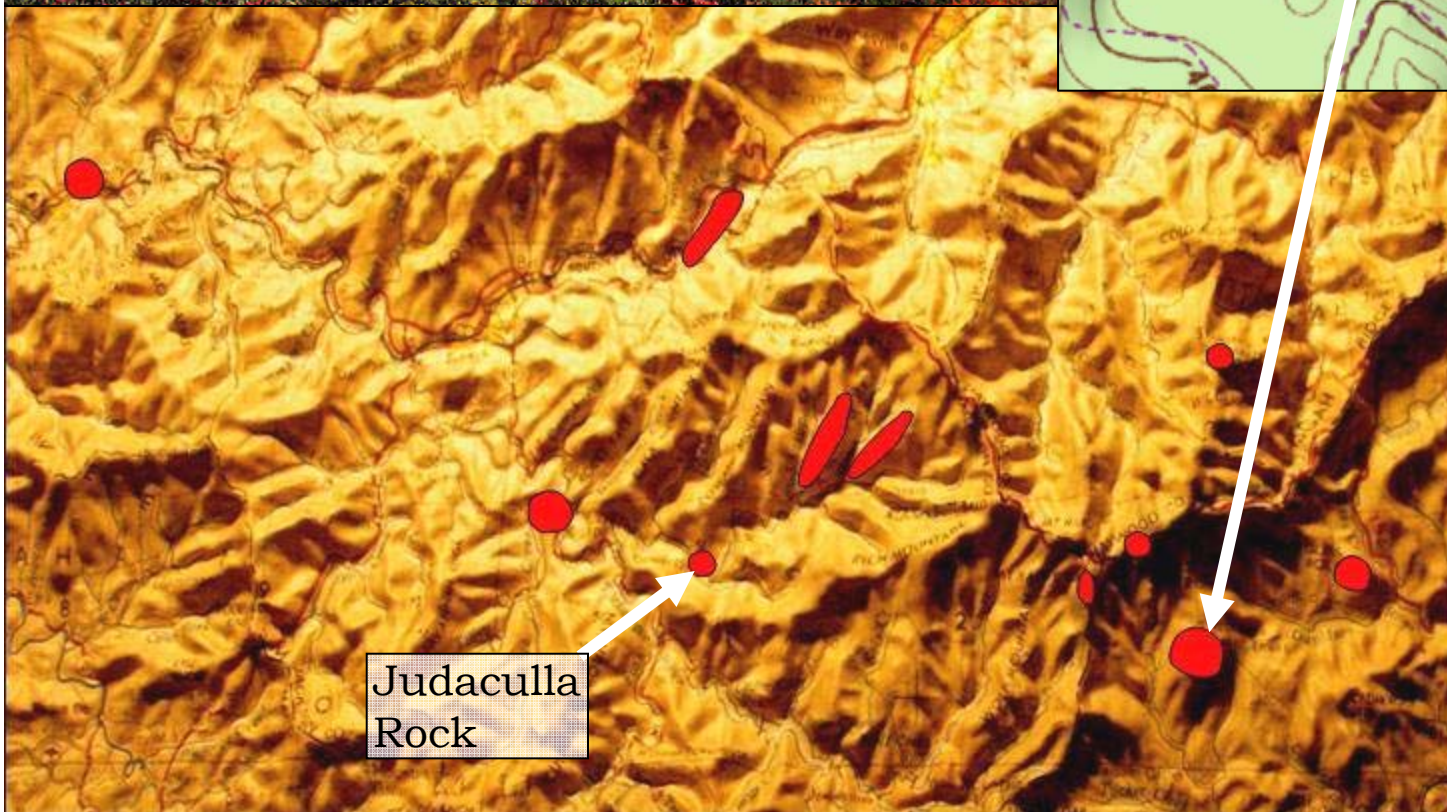
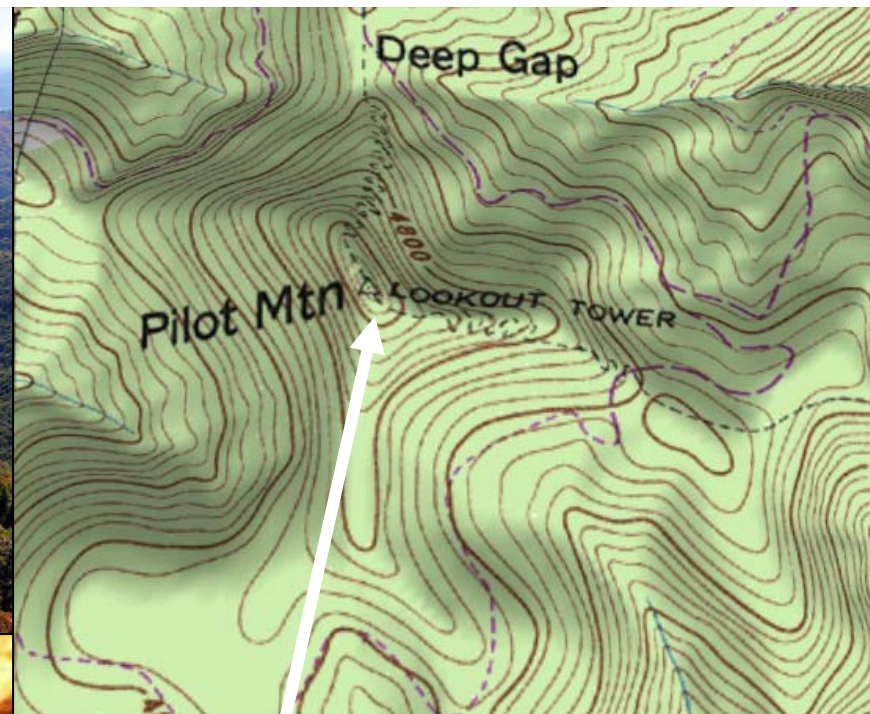
Loubser, 2008



**Judaculla's
Ritual Line**

**Judaculla's
Hand Print**

View to Pilot Mtn from Devils Courthouse

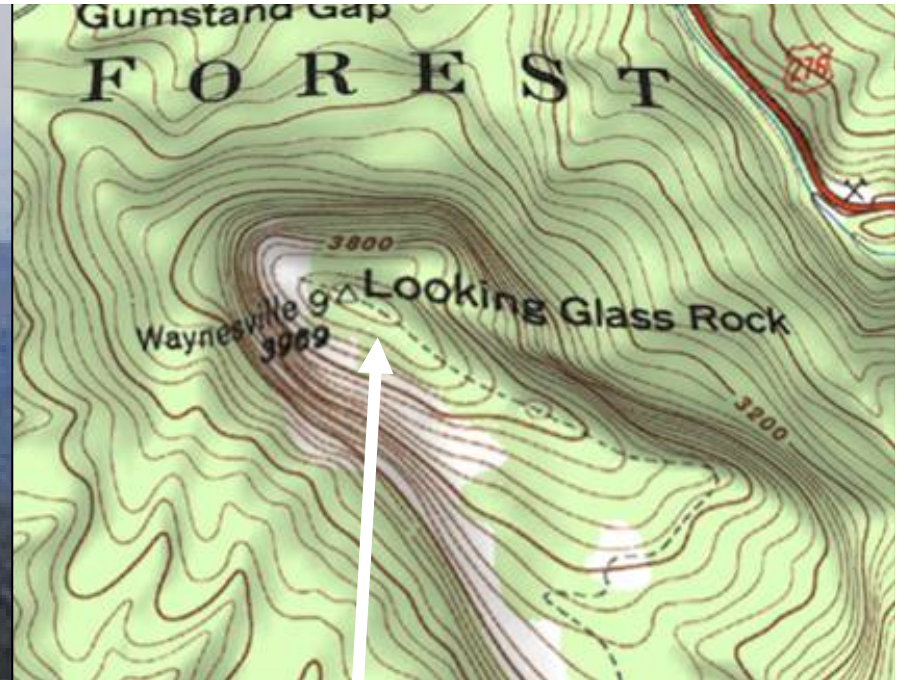


Judaculla
Rock

Pilot Mountain

**Cherokee
Creation Story**

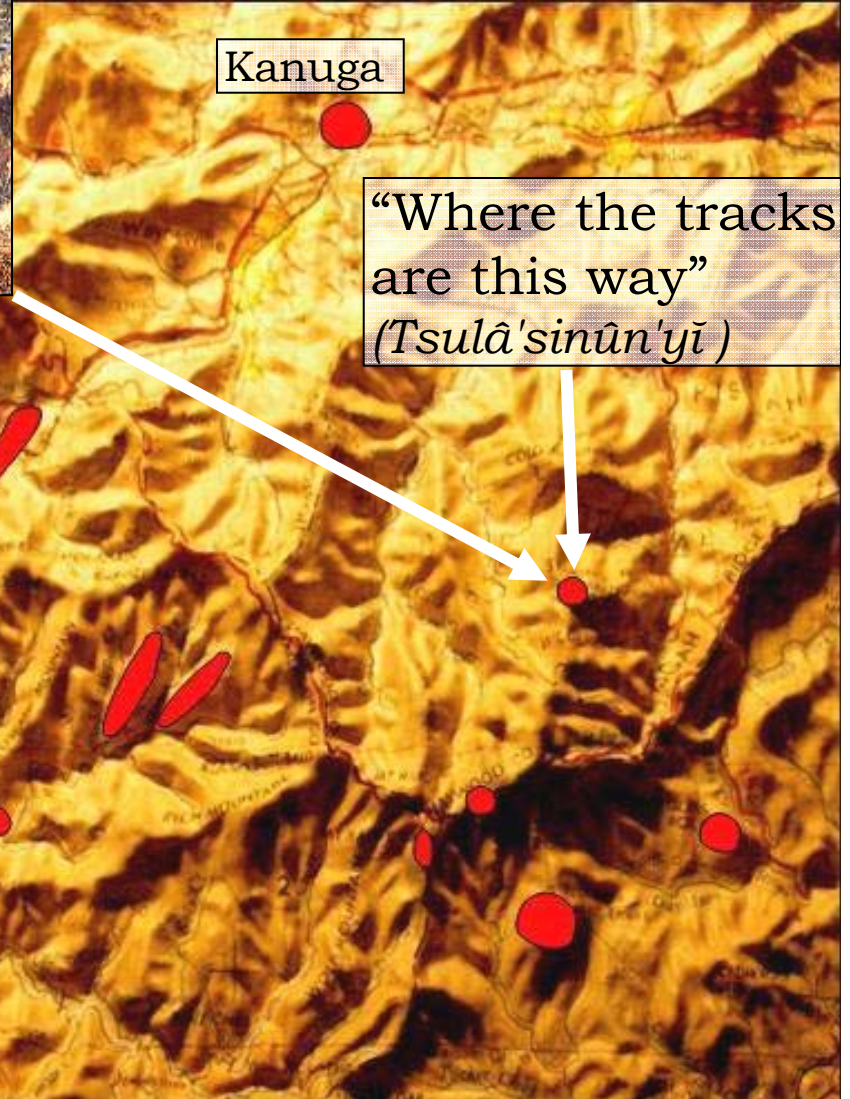
*Kana'ti
& Selu*



Looking Glass Rock

Where Judaculla saw his own reflection

Shining Rock



Kanuga

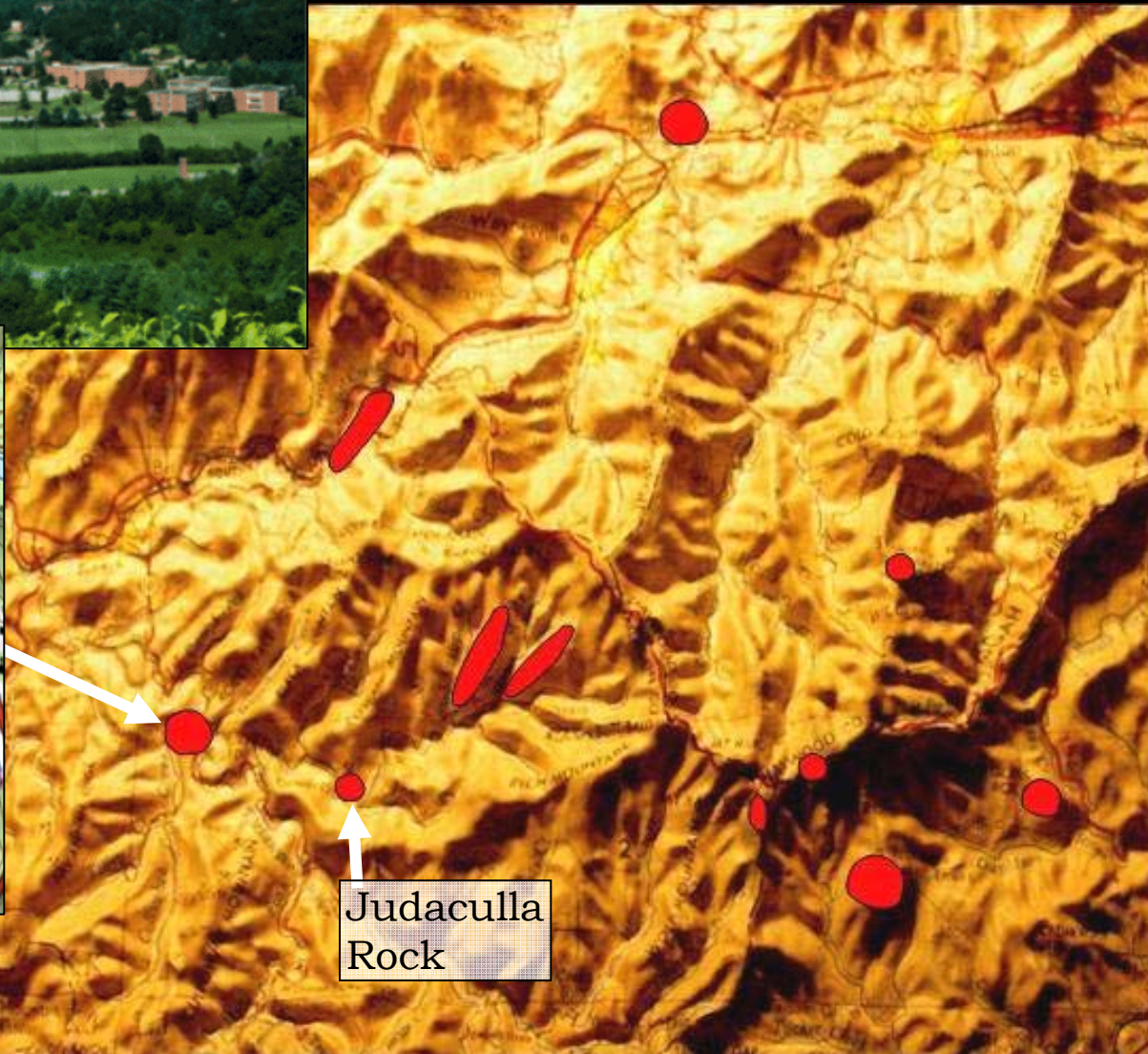
“Where the tracks
are this way”
(*Tsulā'sinûn'yī*)

“Where the
footprint is”
(*Datsunalagun'yi*)



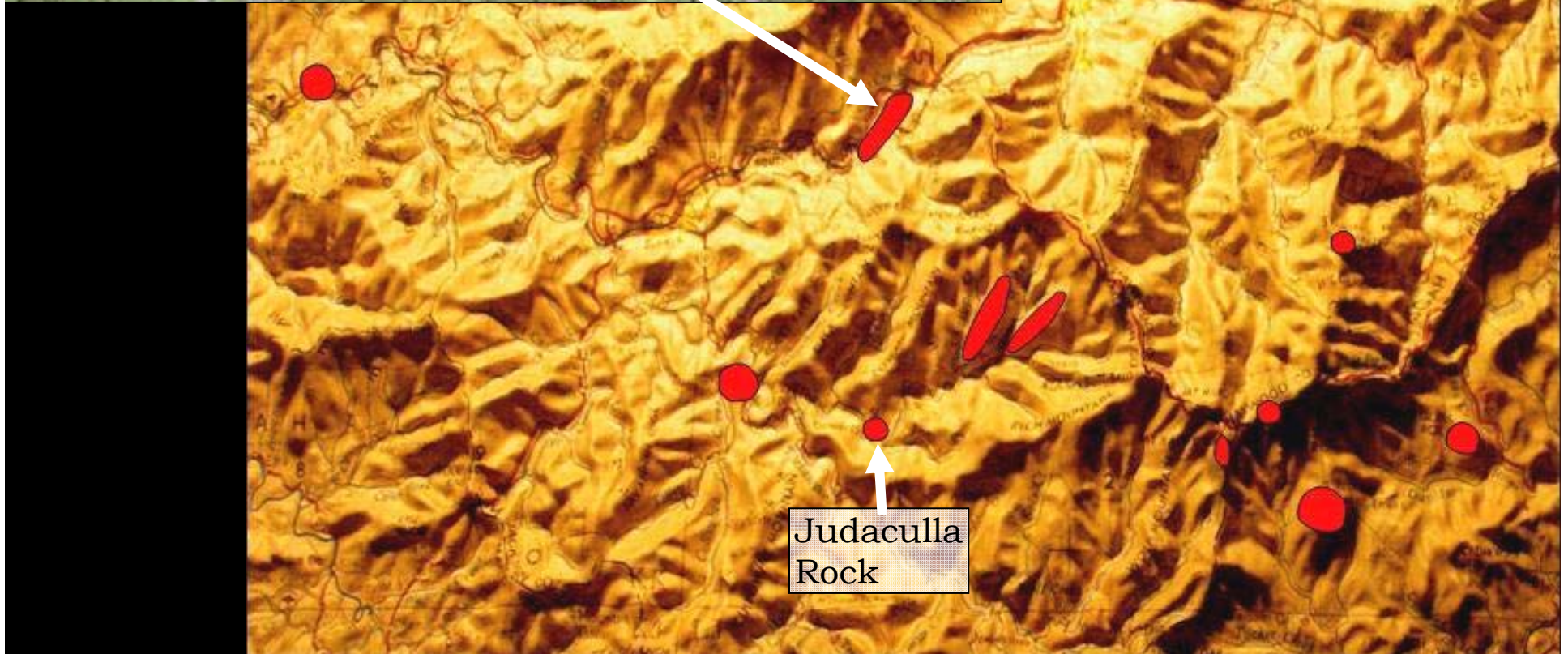
Cullowhee

means- *Judaculla's Place*





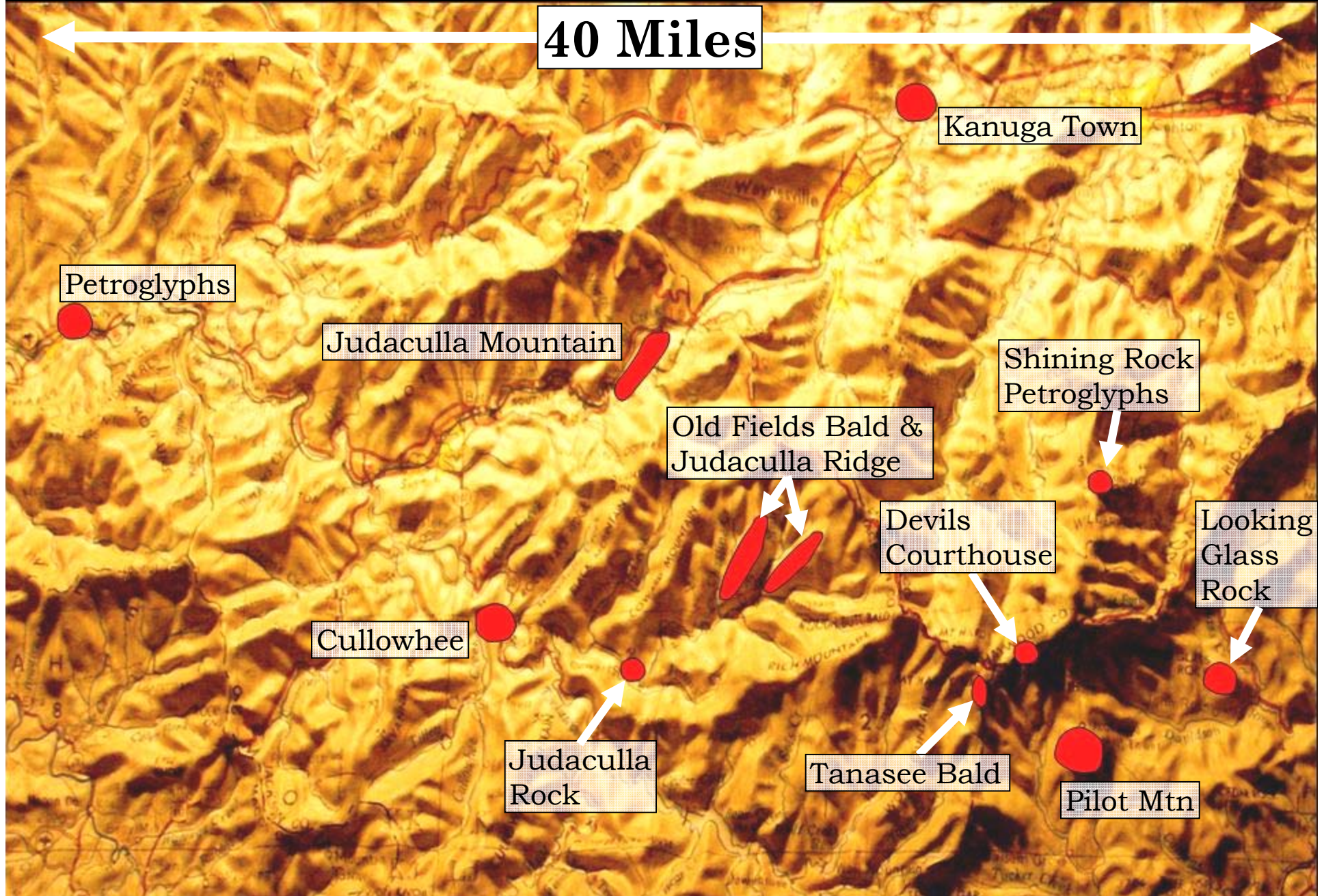
Judaculla Mountain

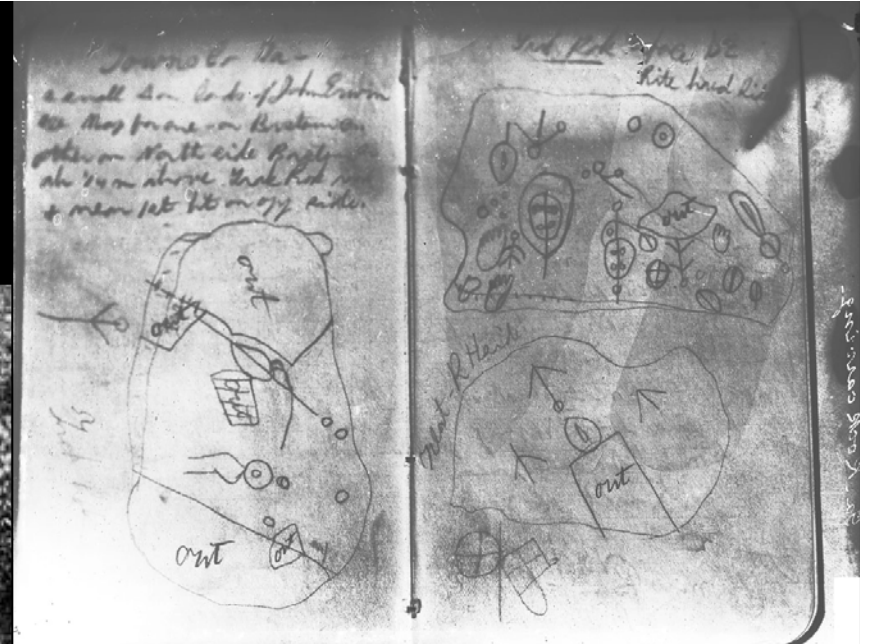


Judaculla
Rock

Judaculla *Mythscape* – Landscape & Legend

40 Miles





Mooney Photograph
(circa 1889) of
Gardner Rock and
his notes and
sketches of North
Georgia petroglyphs

Map- The Cherokee Country by James Mooney, 1900.

Showing Judaculla
Rock along with
major landscape
features



Circa 1930s postcard of a whitewashed Judaculla Rock with landowner Milas Parker in the background



Deteriorating conditions at Judaculla Rock





Circa 1920s picture of a
whitewashed Judaculla Rock
– Dashed line indicates 2008
surface level.

Judaculla Rock - 2008



Site Plan for Judaculla Rock

Protecting | Respecting | Celebrating



THE Louis Berger Group, INC.

www.louisberger.com



Judaculla Rock
Interpretive Area



Jannie Loubser, Douglas Frink and coauthor Lorie Hansen remove sediment from the face of Judaculla Rock, 2007.

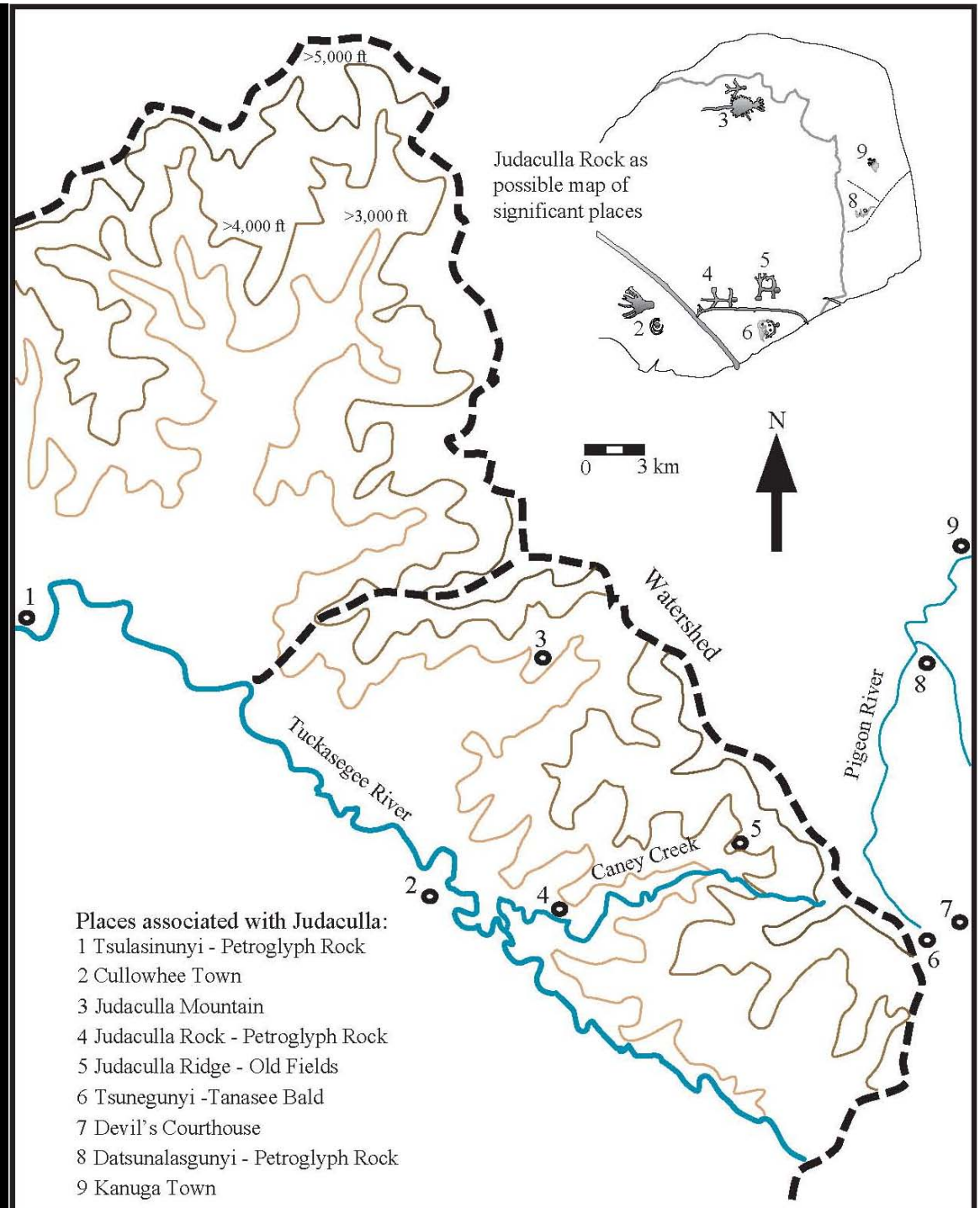


REDUCED RE-DRAWING
OF THE JUDACULLA ROCK
TRACING. Loubser, 2008



Judaculla's World on the Landscape and Possibly on the Rock.

Loubser 2008





BUREAU OF AMERICAN ETHNOLOGY

NINETEENTH ANNUAL REPORT PL. XIV

BUREAU OF AMERICAN ETHNOLOGY

NINETEENTH ANNUAL REPORT PL. XVII



PHOTOGRAPH BY AUTHOR, 1883

AYÂSTA



PHOTOGRAPH BY AUTHOR, 1888

WALINÍ, A CHEROKEE WOMAN





Modern rendition of the
Cherokee Warrior Dance.

Cherokee ball players
performed necessary
rituals prior to the game.
(Mooney, 1888)



Native American Boarding Schools

...to forcibly acculturate
Indians into mainstream
white society.

...a break with many
traditions, including
the Judaculla rituals





Eastern Band of Cherokee Indians
Tribal Historic Preservation Office
P.O. Box 455
Cherokee, NC 28719
Ph: 828-554-6854 Fax 828-488-2462

Heritage Resource Conservation Plan for Judaculla Rock

Jackson County,
North Carolina



ad h m o t h b o n d b p o e h p f q h
b o w m o n e d e b a r e a t a f q t a
o e m s h s b e g e h d h m p t a a d
f a b e a g u o f t c w p e a m p a t o s c e
s w b q t p g e d b t o g e w h i f o
a p a o m a t h b o n q h a d w m o n
a l m t o f d e e b e b e r o s m s h s
h a d h e t y s m t o d b e a g e a p a d t
c e q u a h n e a n e q t a b o n s h s
o m y e a t b a b s w b q t p g e a t s h w
I h o c e t a w h a d t d e

Mo 28 K 175- female
s h a t p e o h p t b e g e d a t
p a o t o m o n t o b e a t
s i q w i p h o h a d f h p a d i t
m h p w a a g s e h a b
h d s t o d w o k
e t h e o u l e d
A p.



Eastern Band Cherokee Elders Visit Tsul' Kalu'

