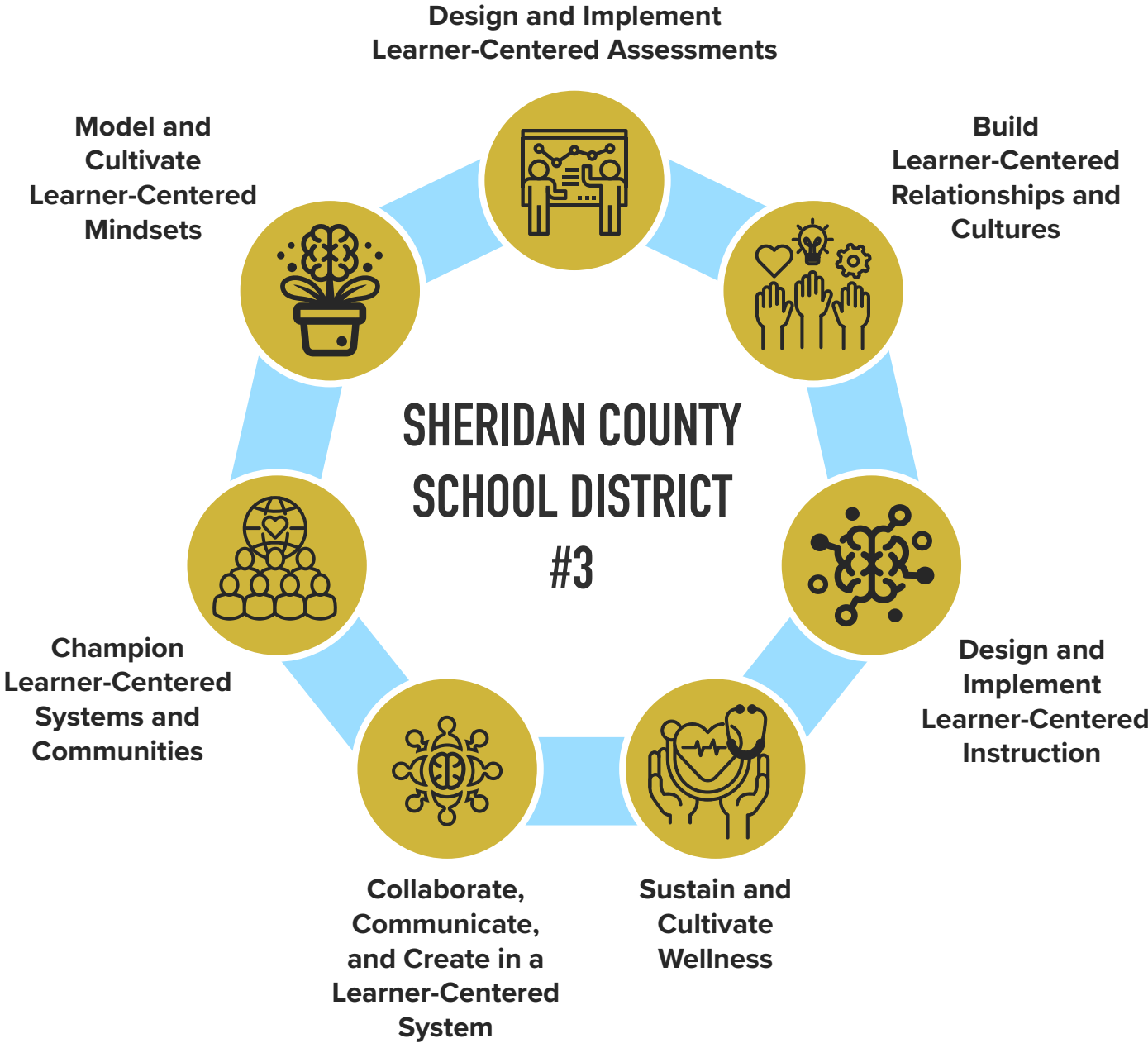


# Portrait of an Educator



## OUR EDUCATORS...



### Model and Cultivate Learner-Centered Mindsets

- Model and cultivate a growth mindset where all learners lean into challenges, demonstrate perseverance, are flexible in their thinking, and aren't afraid to fail forward
- Value equity across all domains in their community of learners



### Design and Implement Learner-Centered Assessments

- Know that learners are more than test scores and that through competency-based instruction and assessment, all learners have the opportunity to demonstrate that they have mastered both skills and content knowledge through application, not memorization
- Use feedback to assess student growth as well as to support students in monitoring their own learning and taking increased ownership of their individual learning pathways



### Build Learner-Centered Relationships and Cultures

- Build trusting, developmentally-responsive relationships and demonstrate how those relationships are foundational to creating a safe, positive learning environment where all learners thrive
- Collaborate with parents, students, and colleagues to support the growth of all learners within their community
- Recognize that all learners are unique in order to authentically build empathetic relationships and learning experiences that honor cultural diversity, social diversity, and neurodiversity



### Design and Implement Learner-Centered Instruction

- Tailor instructional experiences to each student's learning style while challenging them with opportunities to grow both their skills and content expertise through real-world applications
- Build learning experiences, including interdisciplinary experiences, with learners in order to deepen student engagement and systematically build opportunities for increased student agency
- Believe that even a small school can design meaningful and impactful learning experiences anchored in high expectations, providing personalized entry points where all students are capable of high levels of success
- Value high-level questions not only as an instructional tool, but as an opportunity for students to ask their own questions, increasing opportunities for voice and choice



### Sustain and Cultivate Wellness

- Model essential life skills and mindsets—including empathy, balance, and stress management—in order to support learners in growing their own self-awareness and healthy lifestyles
- Celebrate that focusing on the whole-educator as well as the whole-student supports a learning environment that is joyful and supportive of the meaningful growth and well-being of its entire community



### Collaborate, Communicate, and Create in a Learner-Centered System

- Design experiences that provide opportunities for learners to build globally-transferable skills—including communication, collaboration, self-direction, critical and creative thinking—that they will need to be successful in college, career, and the workforce
- Recognize that in order to be prepared for the evolving landscape of work, content knowledge is not enough, and students need to be able to use this knowledge to solve novel problems and effectively communicate their ideas
- Intentionally teach students not what to think, but rather how to ask questions and think for themselves



### Champion Learner-Centered Systems and Communities

- Seek opportunities to continuously grow in their own practice and translate this learning into meaningful opportunities to improve student learning
- Foster and sustain strong collaboration between educators who are in service of continuous learning to improve educator practice and nurture positive culture
- Demonstrate clear communication, collaboration, and strong engagement with families and the larger community to support all learners