



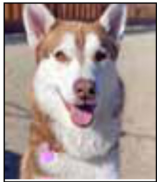
Asterlyn Pearson, Longfellow Elementary School second-grader, draws an encounter with a fox. Today will be a great day to observe wildlife, with increasing clouds, a 20 percent chance of showers and thunderstorms, a high of 76 and a low around 45.



Arkansas River Flow	
(Measurement in cubic feet per second)	
Granite	124 cfs
Nathrop	331 cfs
Salida	324 cfs
Wellsville	356 cfs
Parkdale	377 cfs

Pet of the day

Balto is a 2-year-old male Siberian husky mix. He is gentle and cuddly.



Balto

info@ark-valley.org or 395-2737
ark-valley.org



Winning Numbers

(Wednesday night)
No one matched all six numbers. Saturday's estimated annuitized jackpot will be about \$2.1 million.

7- 13- 20- 21- 27- 29

Cash 5 (Wed.) **9- 21- 22- 29- 31**

Lucky for Life (Wed.) **4-12-25-39-43(7)**

Mega Millions (Tue.) **14-25-38-59-64(21)(4)**

Powerball (Wed.) **9- 10- 20- 22- 52(25)(3)**

coloradolottery.com

All local fire restrictions
have been rescinded.
Continue to use caution.

Thursday Statistics

High: 73 Low: 42

Precipitation none

(Measurement taken at 8 p.m.)

Sept. prcp.: .09

Sept. avg. prcp.: .89

2022 prcp. to date: 9.08

Avg. Jan.-Sept. prcp.: 8.73

Average high: 75.1

Average low: 38.1

Today's Statistics

Sunrise: 6:46

Sunset: 7:12

Length of day: 12:26

Get news and weather
online at
themountainmail.com

Weather forecast

Salida

Today



Increasing clouds,
20% chance of
showers, t-storms.

High
76

Low
45

Saturday



Sunny, SSW wind
15-20mph, gusting
up to 30 mph.

High
76

Low
43

Sunday



Sunny, SW wind
15-20mph, gusting
up to 30 mph.

High
80

Low
49

Monarch



Increasing clouds,
20% chance of
showers, t-storms.

High
53

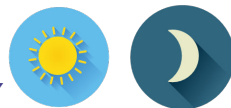
Low
35



Sunny, breezy,
SW wind
10-20 mph.

High
52

Low
34



Sunny, becoming
mostly clear
overnight.

High
56

Low
39

Denver



Increasing clouds,
30% chance of
showers, t-storms.

High
82

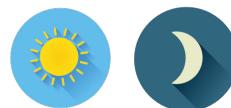
Low
53



Sunny, 10% chance
of showers,
thunderstorms.

High
82

Low
51



Sunny, becoming
mostly clear
overnight.

High
87

Low
55

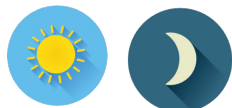
Pueblo



Sunny, WNW wind
5-15mph becoming
ESE after noon.

High
88

Low
54



Sunny, WNW wind
5-10mph becoming
south after noon.

High
88

Low
52



Sunny, WNW wind
5-15mph becoming
SSW in the morning.

High
92

Low
58

Grand Junction



Increasing clouds,
30% chance of
showers, t-storms.

High
80

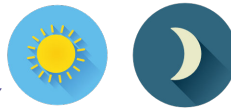
Low
56



Mostly sunny, SE
wind 5-15mph
becoming SW.

High
82

Low
56



Sunny, becoming
clear
overnight.

High
86

Low
58