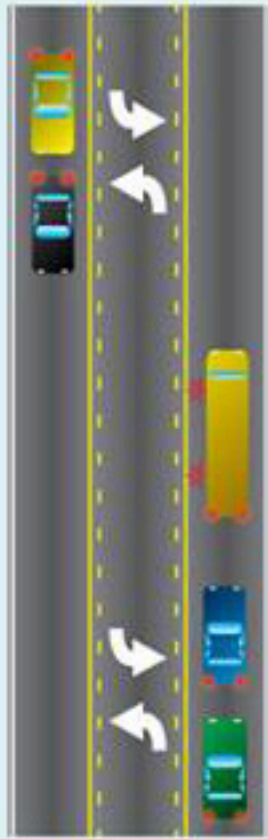


When do I stop for school buses?



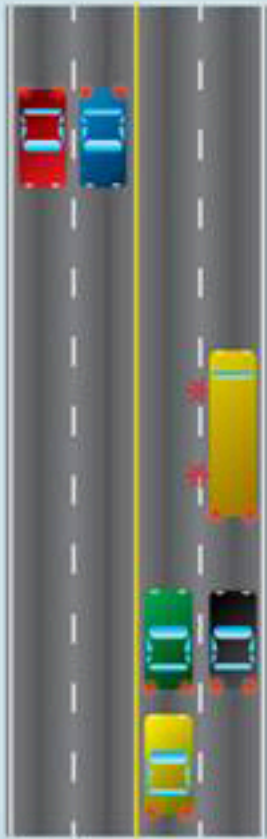
Two lanes:

Vehicles traveling in each direction are required to stop when the bus's red lights are flashing.



Three lanes:

When the highway has a center turning lane with one travel lane on each side, vehicles traveling in each direction are required to stop when the bus's red lights are flashing.



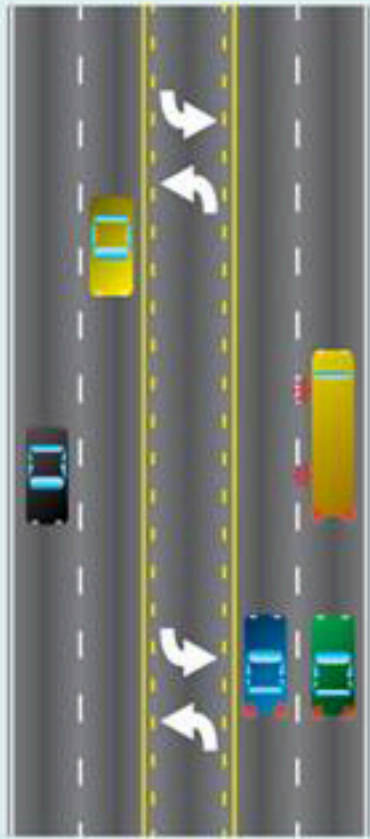
Four lanes:

Vehicles traveling in each direction are required to stop when the bus's red lights are flashing.



Divided highway:

When the highway has a grass median or other physical barriers, only traffic moving in the same direction as the bus is required to stop when the bus's red lights are flashing. Oncoming traffic should proceed with caution.



Divided highway:

When the highway has a center turning lane with two travel lanes on each side, only traffic moving in the same direction as the bus is required to stop when the bus's red lights are flashing. Oncoming traffic should proceed with caution.