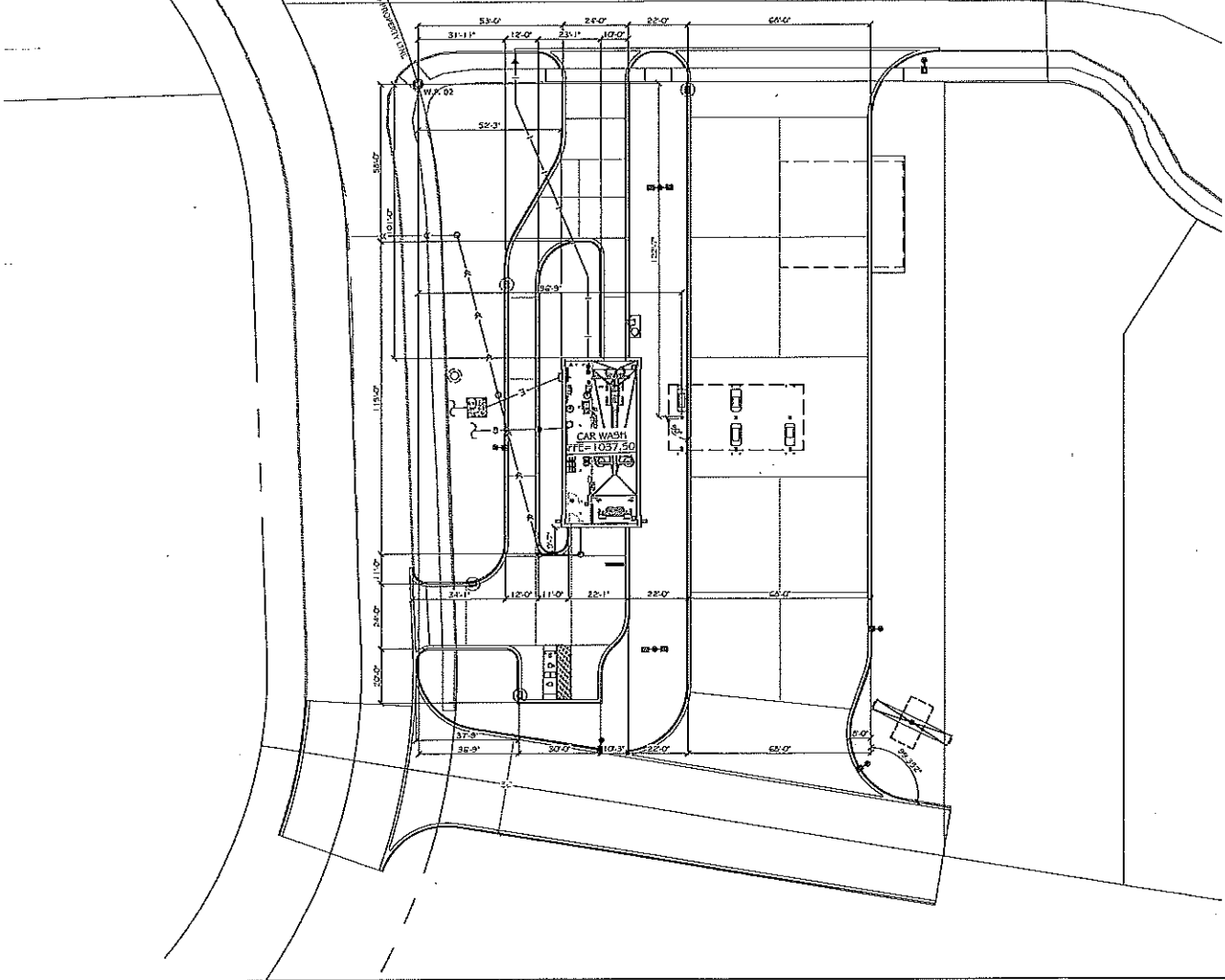
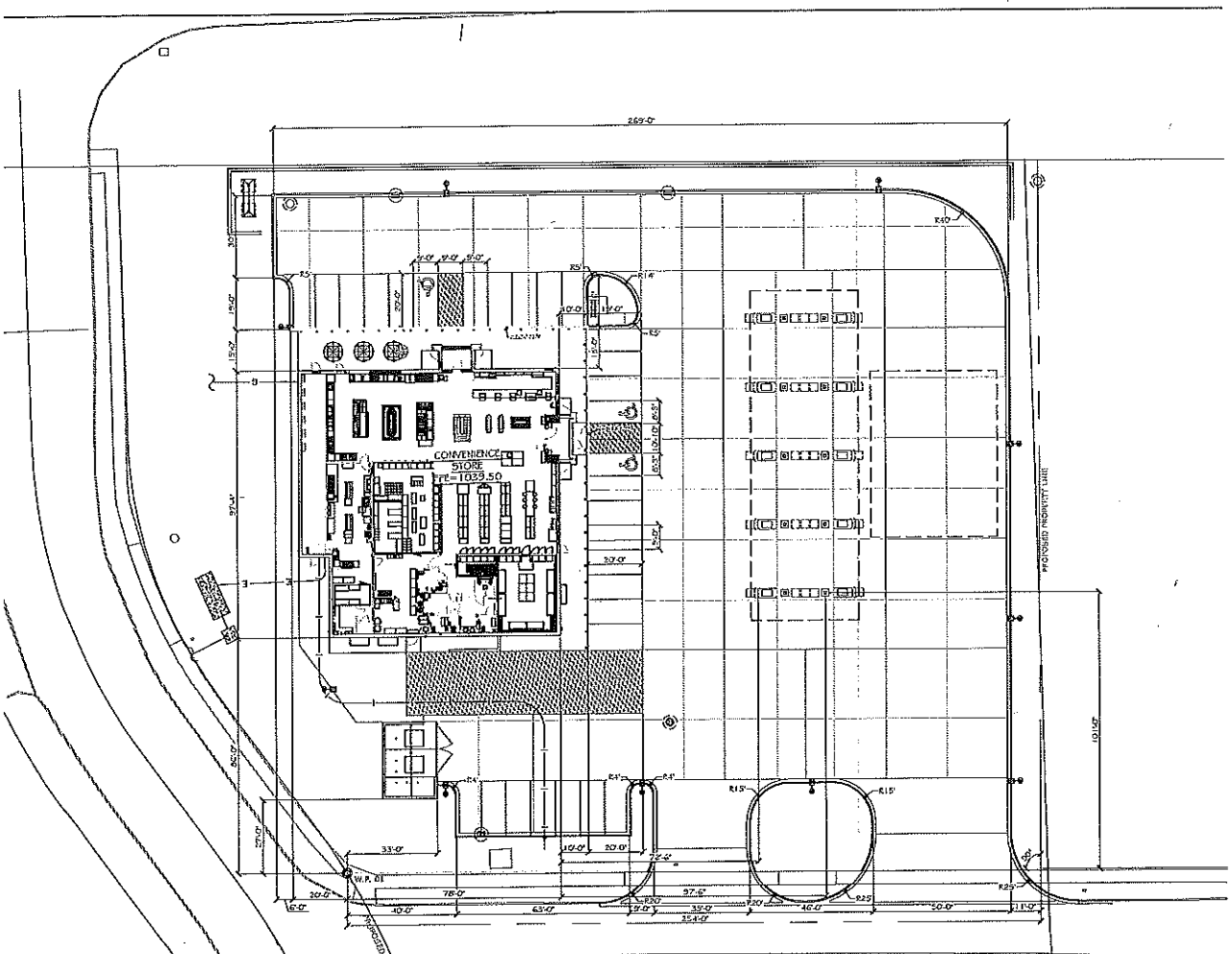


General Reference Map
Grant County, WI



Tax Parcel Boundaries

The data provided in this document is for informational purposes only and Grant County assumes no legal responsibility for the information contained in this data. The burden for determining fitness for use rests entirely upon the user. Grant County assumes no liability for the accuracy of the data or responsibility for direct, indirect, special, consequential, exemplary or other damages. This document is not a legal survey nor is it intended to be used as such.





KWIK TRIP, Inc.
 P.O. BOX 2107
 WISCONSIN
 LACROSSE, WI 54602-2107
 PH: (608) 781-8888
 FAX: (608) 781-8860

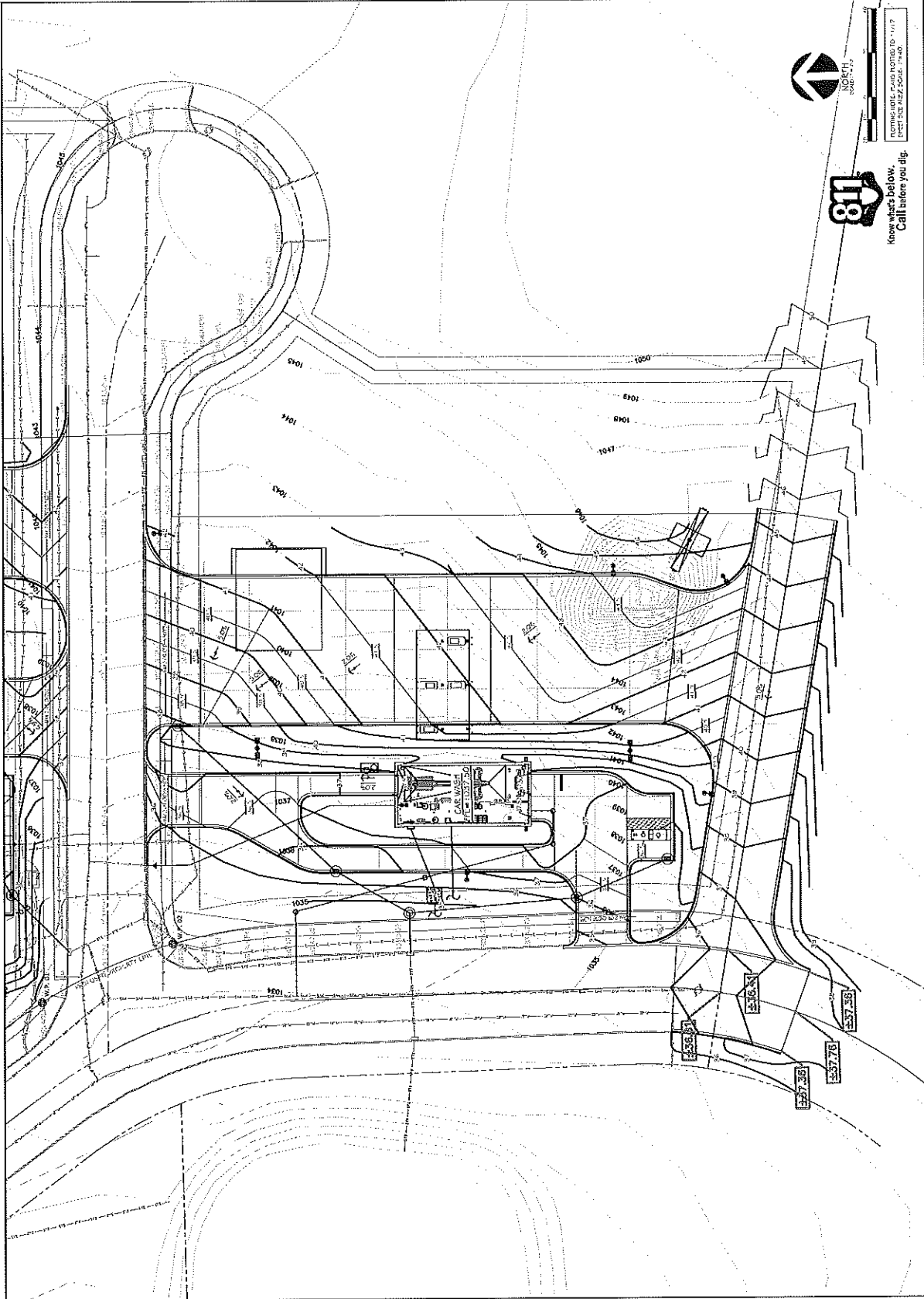
INSITES
 11777 Wisconsin Ave., Suite 200
 Wauwatosa, WI 53226
 Tel: 773.348.8888



GRADE PLAN - ENLARGED - 1:20
 CONVENIENCE STORE 1196
 PLATEVILLE, WISCONSIN

DATE	02-28-2019
DRAWN	ASAMITTA
CHECKED	INITIALS
INCHES	10/16"
SCALE	AS SHOWN
PROJECT	CONVENIENCE STORE 1196
OWNER	CONVENIENCE STORE 1196
DESIGNER	INSITES
DATE	02-28-2019
SCALE	AS SHOWN
PROJECT	CONVENIENCE STORE 1196
OWNER	CONVENIENCE STORE 1196
DESIGNER	INSITES

SP2.1.2



Know what's below.
 Call before you dig.

HomeSafe Plus Home ID - 1117
 Street 752 442.2006 - 1-800-

KWIK TRIP

KWIK STAR

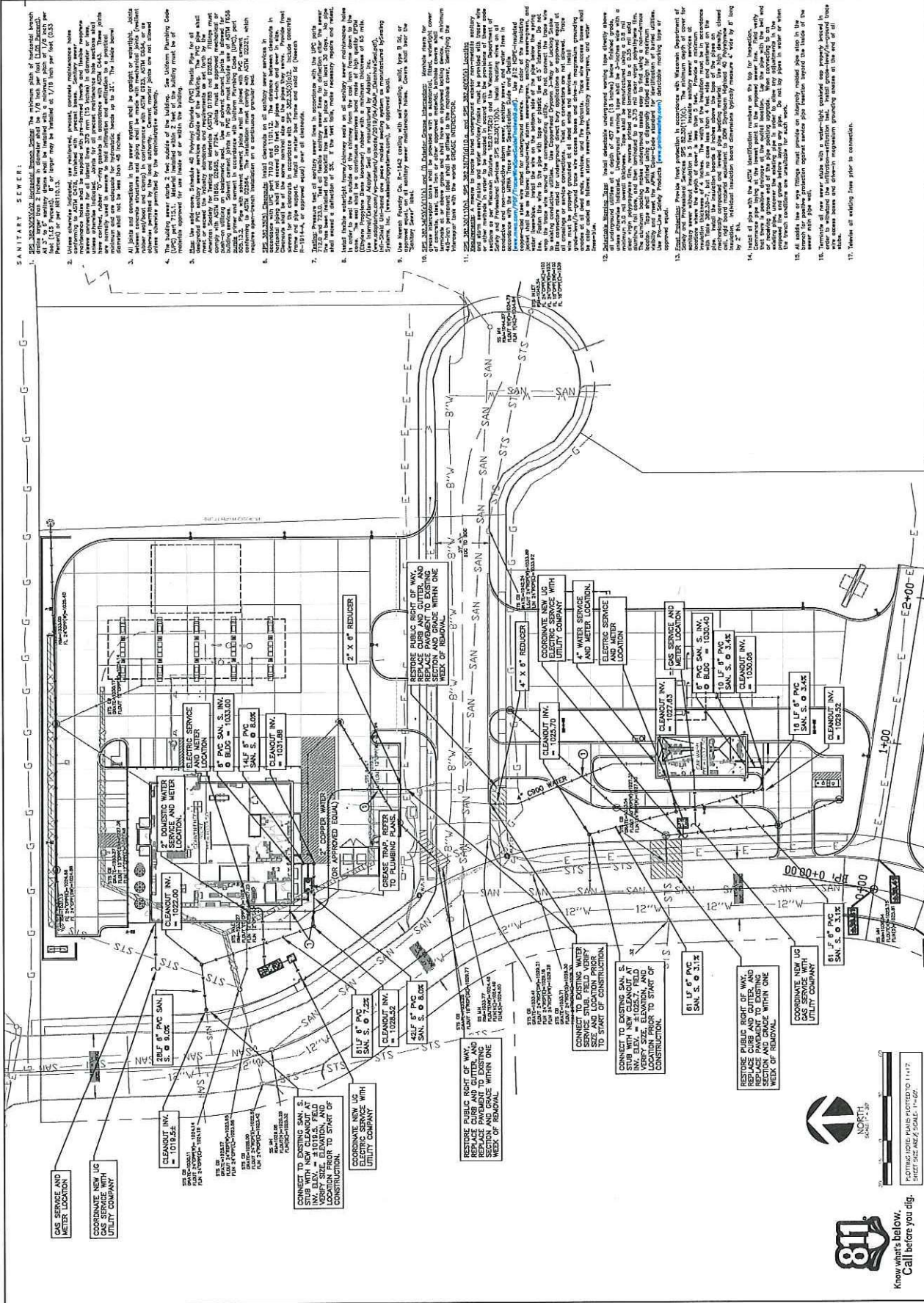
KWIK TRIP, Inc.
 P.O. BOX 2107
 1625 OAK STREET
 PLATEVILLE, WI 53153
 PH: (888) 781-8968
 FAX: (888) 781-8960



UTILITY PLAN
 CONVENIENCE STORE 1196
 PLATEVILLE, WISCONSIN

NO.	DATE	DESCRIPTION
1	12/10/10	ISSUED
2	01/20/11	REVISION
3	02/01/11	REVISION
4	02/01/11	REVISION
5	02/01/11	REVISION
6	02/01/11	REVISION
7	02/01/11	REVISION
8	02/01/11	REVISION
9	02/01/11	REVISION
10	02/01/11	REVISION
11	02/01/11	REVISION
12	02/01/11	REVISION
13	02/01/11	REVISION
14	02/01/11	REVISION
15	02/01/11	REVISION
16	02/01/11	REVISION
17	02/01/11	REVISION
18	02/01/11	REVISION
19	02/01/11	REVISION
20	02/01/11	REVISION
21	02/01/11	REVISION
22	02/01/11	REVISION
23	02/01/11	REVISION
24	02/01/11	REVISION
25	02/01/11	REVISION
26	02/01/11	REVISION
27	02/01/11	REVISION
28	02/01/11	REVISION
29	02/01/11	REVISION
30	02/01/11	REVISION
31	02/01/11	REVISION
32	02/01/11	REVISION
33	02/01/11	REVISION
34	02/01/11	REVISION
35	02/01/11	REVISION
36	02/01/11	REVISION
37	02/01/11	REVISION
38	02/01/11	REVISION
39	02/01/11	REVISION
40	02/01/11	REVISION
41	02/01/11	REVISION
42	02/01/11	REVISION
43	02/01/11	REVISION
44	02/01/11	REVISION
45	02/01/11	REVISION
46	02/01/11	REVISION
47	02/01/11	REVISION
48	02/01/11	REVISION
49	02/01/11	REVISION
50	02/01/11	REVISION
51	02/01/11	REVISION
52	02/01/11	REVISION
53	02/01/11	REVISION
54	02/01/11	REVISION
55	02/01/11	REVISION
56	02/01/11	REVISION
57	02/01/11	REVISION
58	02/01/11	REVISION
59	02/01/11	REVISION
60	02/01/11	REVISION
61	02/01/11	REVISION
62	02/01/11	REVISION
63	02/01/11	REVISION
64	02/01/11	REVISION
65	02/01/11	REVISION
66	02/01/11	REVISION
67	02/01/11	REVISION
68	02/01/11	REVISION
69	02/01/11	REVISION
70	02/01/11	REVISION
71	02/01/11	REVISION
72	02/01/11	REVISION
73	02/01/11	REVISION
74	02/01/11	REVISION
75	02/01/11	REVISION
76	02/01/11	REVISION
77	02/01/11	REVISION
78	02/01/11	REVISION
79	02/01/11	REVISION
80	02/01/11	REVISION
81	02/01/11	REVISION
82	02/01/11	REVISION
83	02/01/11	REVISION
84	02/01/11	REVISION
85	02/01/11	REVISION
86	02/01/11	REVISION
87	02/01/11	REVISION
88	02/01/11	REVISION
89	02/01/11	REVISION
90	02/01/11	REVISION
91	02/01/11	REVISION
92	02/01/11	REVISION
93	02/01/11	REVISION
94	02/01/11	REVISION
95	02/01/11	REVISION
96	02/01/11	REVISION
97	02/01/11	REVISION
98	02/01/11	REVISION
99	02/01/11	REVISION
100	02/01/11	REVISION

SP4



- SANITARY SEWER:**
1. 250,000,000.00. Horizontal branch. The minimum depth of horizontal branch sewer lines shall be 17 1/2" from top of finished ground. The minimum depth of vertical sewer lines shall be 17 1/2" from top of finished ground. The minimum depth of sewer lines shall be 17 1/2" from top of finished ground. The minimum depth of sewer lines shall be 17 1/2" from top of finished ground.
 2. 250,000,000.00. Horizontal branch. The minimum depth of horizontal branch sewer lines shall be 17 1/2" from top of finished ground. The minimum depth of vertical sewer lines shall be 17 1/2" from top of finished ground. The minimum depth of sewer lines shall be 17 1/2" from top of finished ground. The minimum depth of sewer lines shall be 17 1/2" from top of finished ground.
 3. 250,000,000.00. Horizontal branch. The minimum depth of horizontal branch sewer lines shall be 17 1/2" from top of finished ground. The minimum depth of vertical sewer lines shall be 17 1/2" from top of finished ground. The minimum depth of sewer lines shall be 17 1/2" from top of finished ground. The minimum depth of sewer lines shall be 17 1/2" from top of finished ground.
 4. 250,000,000.00. Horizontal branch. The minimum depth of horizontal branch sewer lines shall be 17 1/2" from top of finished ground. The minimum depth of vertical sewer lines shall be 17 1/2" from top of finished ground. The minimum depth of sewer lines shall be 17 1/2" from top of finished ground. The minimum depth of sewer lines shall be 17 1/2" from top of finished ground.
 5. 250,000,000.00. Horizontal branch. The minimum depth of horizontal branch sewer lines shall be 17 1/2" from top of finished ground. The minimum depth of vertical sewer lines shall be 17 1/2" from top of finished ground. The minimum depth of sewer lines shall be 17 1/2" from top of finished ground. The minimum depth of sewer lines shall be 17 1/2" from top of finished ground.
 6. 250,000,000.00. Horizontal branch. The minimum depth of horizontal branch sewer lines shall be 17 1/2" from top of finished ground. The minimum depth of vertical sewer lines shall be 17 1/2" from top of finished ground. The minimum depth of sewer lines shall be 17 1/2" from top of finished ground. The minimum depth of sewer lines shall be 17 1/2" from top of finished ground.
 7. 250,000,000.00. Horizontal branch. The minimum depth of horizontal branch sewer lines shall be 17 1/2" from top of finished ground. The minimum depth of vertical sewer lines shall be 17 1/2" from top of finished ground. The minimum depth of sewer lines shall be 17 1/2" from top of finished ground. The minimum depth of sewer lines shall be 17 1/2" from top of finished ground.
 8. 250,000,000.00. Horizontal branch. The minimum depth of horizontal branch sewer lines shall be 17 1/2" from top of finished ground. The minimum depth of vertical sewer lines shall be 17 1/2" from top of finished ground. The minimum depth of sewer lines shall be 17 1/2" from top of finished ground. The minimum depth of sewer lines shall be 17 1/2" from top of finished ground.
 9. 250,000,000.00. Horizontal branch. The minimum depth of horizontal branch sewer lines shall be 17 1/2" from top of finished ground. The minimum depth of vertical sewer lines shall be 17 1/2" from top of finished ground. The minimum depth of sewer lines shall be 17 1/2" from top of finished ground. The minimum depth of sewer lines shall be 17 1/2" from top of finished ground.
 10. 250,000,000.00. Horizontal branch. The minimum depth of horizontal branch sewer lines shall be 17 1/2" from top of finished ground. The minimum depth of vertical sewer lines shall be 17 1/2" from top of finished ground. The minimum depth of sewer lines shall be 17 1/2" from top of finished ground. The minimum depth of sewer lines shall be 17 1/2" from top of finished ground.
 11. 250,000,000.00. Horizontal branch. The minimum depth of horizontal branch sewer lines shall be 17 1/2" from top of finished ground. The minimum depth of vertical sewer lines shall be 17 1/2" from top of finished ground. The minimum depth of sewer lines shall be 17 1/2" from top of finished ground. The minimum depth of sewer lines shall be 17 1/2" from top of finished ground.
 12. 250,000,000.00. Horizontal branch. The minimum depth of horizontal branch sewer lines shall be 17 1/2" from top of finished ground. The minimum depth of vertical sewer lines shall be 17 1/2" from top of finished ground. The minimum depth of sewer lines shall be 17 1/2" from top of finished ground. The minimum depth of sewer lines shall be 17 1/2" from top of finished ground.
 13. 250,000,000.00. Horizontal branch. The minimum depth of horizontal branch sewer lines shall be 17 1/2" from top of finished ground. The minimum depth of vertical sewer lines shall be 17 1/2" from top of finished ground. The minimum depth of sewer lines shall be 17 1/2" from top of finished ground. The minimum depth of sewer lines shall be 17 1/2" from top of finished ground.
 14. 250,000,000.00. Horizontal branch. The minimum depth of horizontal branch sewer lines shall be 17 1/2" from top of finished ground. The minimum depth of vertical sewer lines shall be 17 1/2" from top of finished ground. The minimum depth of sewer lines shall be 17 1/2" from top of finished ground. The minimum depth of sewer lines shall be 17 1/2" from top of finished ground.
 15. 250,000,000.00. Horizontal branch. The minimum depth of horizontal branch sewer lines shall be 17 1/2" from top of finished ground. The minimum depth of vertical sewer lines shall be 17 1/2" from top of finished ground. The minimum depth of sewer lines shall be 17 1/2" from top of finished ground. The minimum depth of sewer lines shall be 17 1/2" from top of finished ground.
 16. 250,000,000.00. Horizontal branch. The minimum depth of horizontal branch sewer lines shall be 17 1/2" from top of finished ground. The minimum depth of vertical sewer lines shall be 17 1/2" from top of finished ground. The minimum depth of sewer lines shall be 17 1/2" from top of finished ground. The minimum depth of sewer lines shall be 17 1/2" from top of finished ground.
 17. 250,000,000.00. Horizontal branch. The minimum depth of horizontal branch sewer lines shall be 17 1/2" from top of finished ground. The minimum depth of vertical sewer lines shall be 17 1/2" from top of finished ground. The minimum depth of sewer lines shall be 17 1/2" from top of finished ground. The minimum depth of sewer lines shall be 17 1/2" from top of finished ground.

**Kwik
TRIP**

**Kwik
Star**

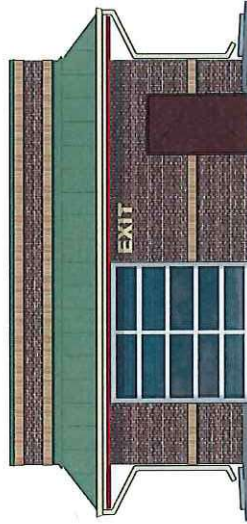
KWIK TRIP, INC.
P.O. BOX 2187
LA PORTE, IN 46350-2187
TEL: (800) 771-8600



1 FRONT ELEVATION



2 RIGHT ELEVATION



3 REAR ELEVATION



4 LEFT ELEVATION