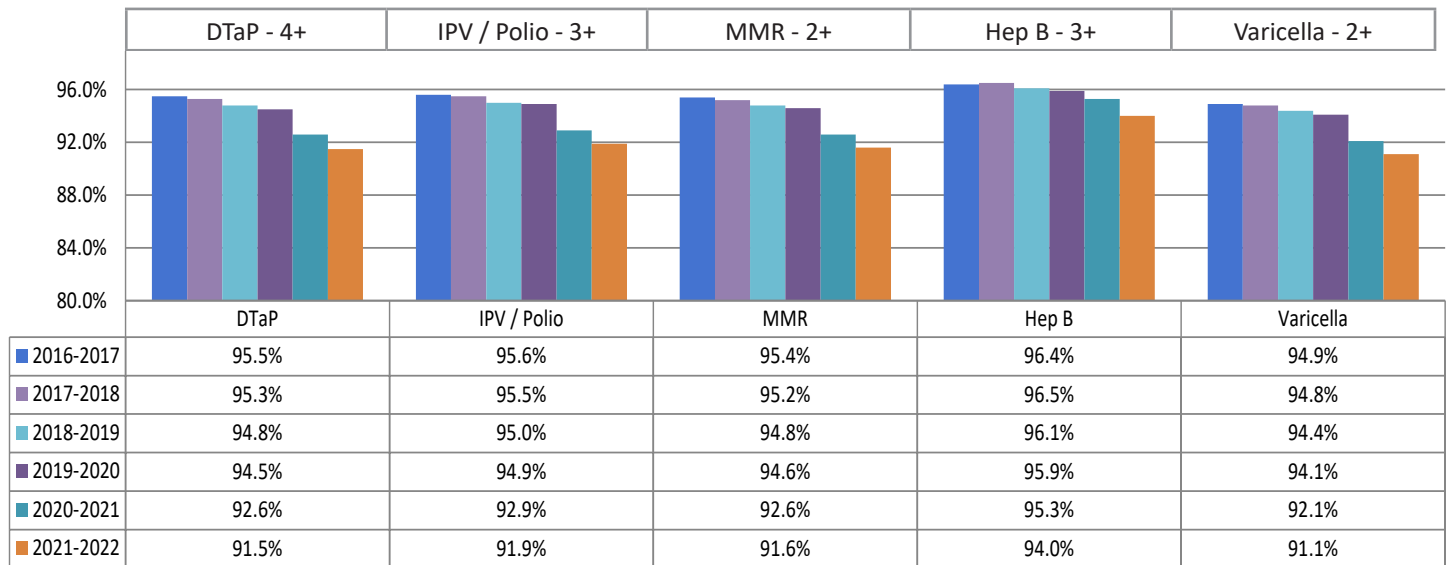


# MISSOURI SCHOOL IMMUNIZATION RATES

## KINDERGARTEN

### IMMUNIZATION RATES BY VACCINE TYPE



Note: Data is based on self-reported school summary report data in compliance with 19 CSR 20.28.010.

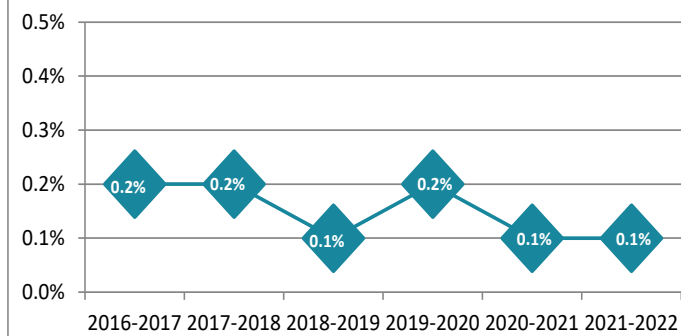
- 2016-2017 children reported: 73,380
- 2017-2018 children reported: 73,113
- 2018-2019 children reported: 72,687
- 2019-2020 children reported: 72,324
- 2020-2021 children reported: 63,093
- 2021-2022 children reported: 71,034

As stated in 19 CSR 20.28.010, it is unlawful for any student to attend school unless the student has been immunized according to this rule or unless a signed statement of medical or religious exemption is on file with the school administrator.

#### Missouri Kindergarten Requirements

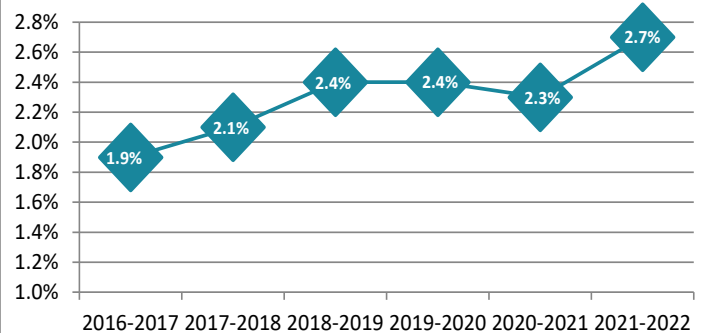
- DTaP: 4 or more doses of diphtheria, tetanus and pertussis vaccine
- IPV / Polio: 3 or more doses of poliovirus vaccine
- MMR: 2 doses of measles, mumps and rubella vaccine
- Hep B: 3 or more doses of hepatitis B vaccine
- Varicella (chickenpox): 2 doses of varicella vaccine

#### MEDICAL EXEMPTIONS



Medical exemption: certification by a licensed doctor of medicine, doctor of osteopathy or his or her designee indicating that either the immunization would seriously endanger the child's health or life, or the child has documentation of disease or laboratory evidence of immunity to the disease.

#### RELIGIOUS EXEMPTIONS



Religious exemption: a parent or guardian objects in writing to the school administrator that immunization of that student violates his / her religious beliefs.

