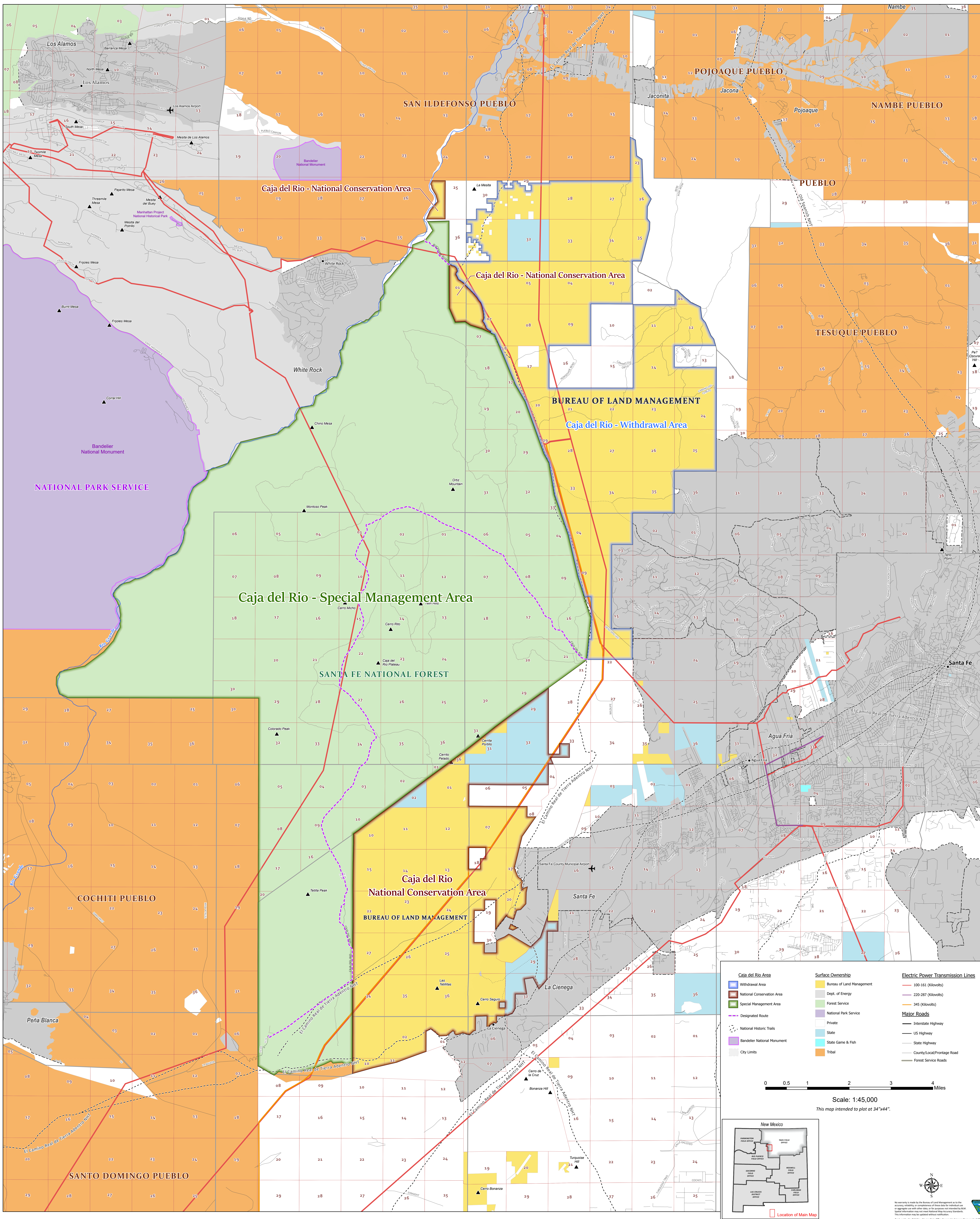


Caja del Rio Special Management and National Conservation Area

April 20, 2026

This map prepared at the request of Senator Martin Heinrich.



Caja del Rio Area	Surface Ownership	Electric Power Transmission Lines
Withdrawal Area	Bureau of Land Management	100-161 (Kilovolts)
National Conservation Area	Dept. of Energy	220-287 (Kilovolts)
Special Management Area	Forest Service	345 (Kilovolts)
Designated Route	National Park Service	
National Historic Trails	Private	
Bandelier National Monument	State	
City Limits	State Game & Fish	
	Tribal	

Major Roads

- Interstate Highway
- US Highway
- State Highway
- County/Local/Frontage Road
- Forest Service Roads

Scale: 1:145,000
This map intended to plot at 34"x44".

Location of Main Map

No warranty is made by the Bureau of Land Management as to the accuracy, reliability, or completeness of these data for individual use or aggregate use with other data. No responsibility is assumed by BLM. Special information may be available from the Bureau of Land Management. This information may be updated without notification. Produced by the BLM New Mexico State Office Geographic Services Team on April 20, 2026.