

# PASA WEEK

## ARTS AND ENTERTAINMENT CALENDAR

July 2-8, 2021

### CALENDAR LISTING GUIDELINES

- Submit Pasa Week calendar events via email to [pambeach@sfnewmexican.com](mailto:pambeach@sfnewmexican.com) at least two weeks prior to the event date.
- Provide the following: event title, date, time, venue, brief description, ticket prices, contact phone number, and web address.
- Inclusion of free listings is dependent on space availability.

CALENDAR COMPILED BY  
PAMELA BEACH

### FRIDAY 7/2

#### Gallery Openings

##### 7 Arts Gallery

125 Lincoln Ave, Suite 110, 505-819-1103  
*Pretty & Gritty*, mixed-media paintings by Angel Wynn; through July 22; reception 5-8 p.m.

##### Art Club The Art Club Gallery

225 Canyon Rd., Suite 2, 505-795-2295  
*Facing Vessels*, paintings and assemblages by Kevin Patrick; through July; reception 5-7 p.m.

##### Aurelia Gallery

414 Canyon Rd., 505-501-2915  
*All Under Heaven*, photographs by Lois Conner; through Sept. 19; reception 5 p.m.

##### Barbara Meikle Fine Art

236 Delgado St., 505-992-0400  
*Celebrations of Color*, paintings by Meikle; reception 4 p.m.

##### Chiaroscuro Contemporary Art

558 Canyon Rd., 505-992-  
*Dare, Revel, Dive*, weavings and works on paper by Polly Barton; through July; reception 5-7 p.m.

##### David Rothermel Contemporary

202 Canyon Rd., 575-642-4981  
Paintings by Rothermel; grand-opening reception 5-8 p.m.

##### El Zaguán

545 Canyon Rd., 505-983-2567  
*Spirit Rocks: Observation and Experience from Life*, paintings by Celia Owens; through July 30; reception 5-7 p.m.

##### Gebert Contemporary

558 Canyon Rd., 505-992-1100  
*Flores Vitae/Flores Mortes*, photographs by Elena Dorfman; through Aug. 15; reception 5-7 p.m.

##### Globe Fine Art

727 Canyon Rd., 505-989-3888  
*Enchanted Skies*, paintings by Reid Richardson; *Jerry Silverstein Collection*, glass art; through Aug. 2; reception 5-7 p.m.

##### GVG Contemporary

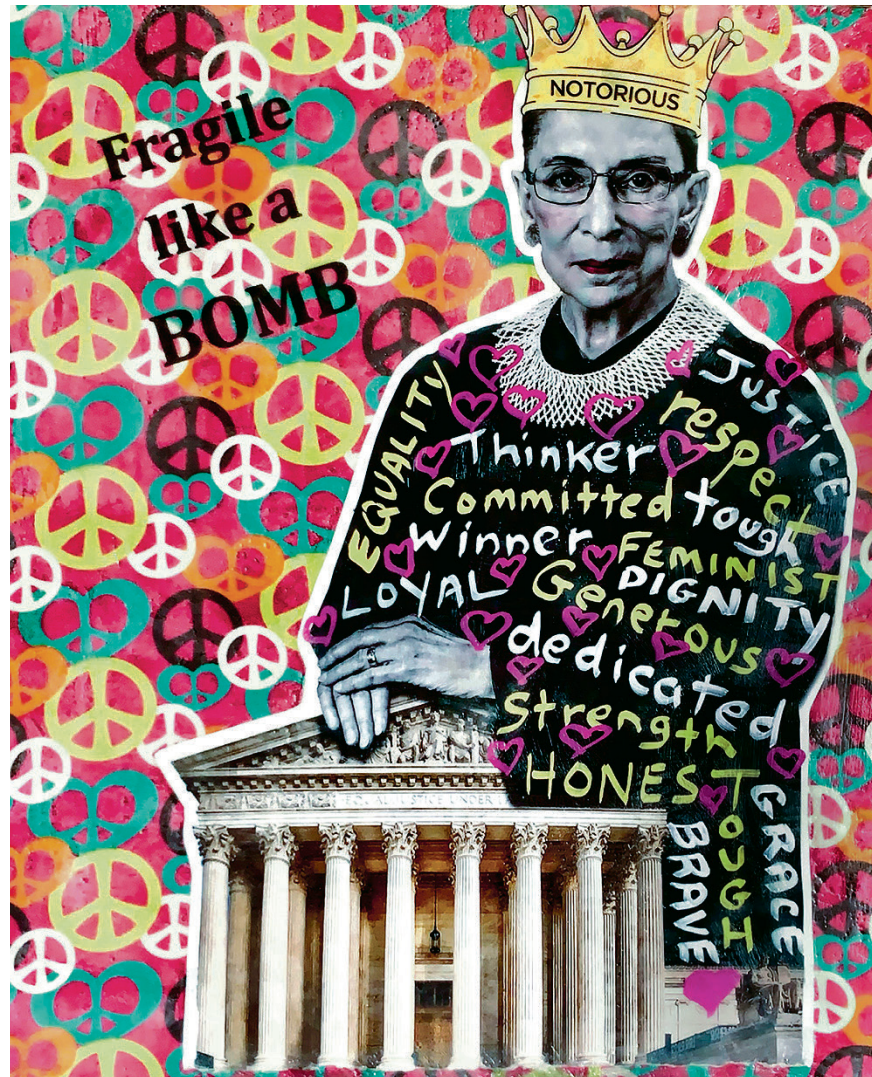
1364 Rufina Circle, suites 3 and 5, 505-982-1494  
*Warehouse Style*, paintings by Blair Vaughn-Gruler and sculpture/mixed-media paintings by Ernst Gruler; through Aug. 16; reception 5-7 p.m.

##### Manitou Galleries

123 W. Palace Ave., 505-986-0440  
*Who We Are*, paintings by BC Nowlin; through July.

##### Sage Creek Gallery

421 Canyon Rd., 505-988-3444  
*The Stories We Tell*, group show; painting and sculpting demonstrations 10 a.m.-4 p.m.



7 Arts Gallery (125 Lincoln Ave, Suite 110) shows paintings by Angel Wynn through July 22.

##### Thomas-Carole Bowker Fine Art Studio

121 Camino Escondido, 505-670-9289  
*Enchanted Landscapes*, paintings and pastels by the artists; through July.

##### True West Gallery

130-E Lincoln Ave., 505-982-0055  
Multidisciplinary work by Carlo Martinez; reception 5-8 p.m.

#### Theater/Dance

##### Entreflamenco summer season opener

El Flamenco Spanish Cabaret, 135 W. Palace Ave., 505-209-1302  
Antonio Granjero + EntreFlamenco Company; 7:30 p.m., doors 6:15 p.m.; from \$25, dinner show from \$43; Wednesdays-Sundays through Sept. 5.

#### Outdoors

##### Geology Walks

Pecos National Historical Park, 1 Peach Dr., 505-757-7241, [nps.gov/peco/planyourvisit/calendar.htm](https://nps.gov/peco/planyourvisit/calendar.htm)  
Free, one-mile round trips, led by geologist Laura Reich; 10:30 a.m. Fridays and Sundays through summer.

### SATURDAY 7/3

#### Gallery Openings

##### Ellsworth Gallery

215 E. Palace Ave., 505-989-7900  
*New Fauna*, photographs by Tommy Bruce; closing reception 5-7 p.m.

#### Theater/Dance

##### The Last of the Dutch Hotel & Homecoming

Adobe Theater's virtual productions of Don Nigro's absurdist play and playwright Peter Fisk's drama set in 1945; 7:30 p.m.; Sunday, 2 p.m.; \$10-\$15.

#### Books/Talks

##### Workshop Series: Changed Through Photography

Photo-eye Bookstore + Project Space, 1300 Rufina Cir., Suite A3, 505-988-5152  
Signings by photographers Tony Bonanno, Eddie Soloway, and Nevada Wier, and others; 3:30-5 p.m.

#### Events

##### The American President

Lensic Performing Arts Center, 211 W. San Francisco St., 505-988-1234, [tickets.lensic.org/7550/7553](https://tickets.lensic.org/7550/7553)  
Screening of Rob Reiner's 1995 comedy; 7 p.m.; call or visit website for free tickets.

##### Santa Fe Artists' Market

Near the Railyard Water Tower, South Guadalupe Street  
Outdoor booths; 9 a.m.-2 p.m. Saturdays through December; 505-310-8766, [santafeartistsmarket.com](https://santafeartistsmarket.com).

##### Santa Fe Farmers' Market

1607 Paseo de Peralta, 505-983-4098  
Summer hours 7 a.m.-1 p.m. Saturdays.

#### Outdoors

##### Leonora Curtin Wetland Preserve

49-A W. Frontage Rd., 505-471-9103  
Nature preserve; 9 a.m.-3 p.m. Saturdays and Sundays; \$3; [santafebotanicalgarden.org](https://santafebotanicalgarden.org).

### SUNDAY 7/4

#### In Concert

##### Greg Butera Band

Tumbleroot Brewery and Distillery patio, 2791 Agua Fria St., 505-393-5135  
Local honky-tonk singer-songwriter; 7-10 p.m.; \$10; [holdmyticket.com/events/373965](https://holdmyticket.com/events/373965).

#### Events

##### Community Day at the Garden

Santa Fe Botanical Garden, 715 Camino Lejo, Museum Hill, 505-471-9103, [santafebotanicalgarden.org](https://santafebotanicalgarden.org)  
Free admission for New Mexico residents and students; 9 a.m.-5 p.m.; no pets allowed; [santafebotanicalgarden.org](https://santafebotanicalgarden.org).

##### Fourth of July fireworks

Outside Santa Fe Place Mall, 4250 Cerrillos Rd.  
Food trucks, children's activities, and local bands Kitty Jo Creek (6 p.m.), Sol Fire (7 p.m.), and JJ and the Hooligans (8 p.m.); opens at noon; fireworks display 9:15 p.m.; Zozobra tickets for sale on site.





La Emi (pictured) Summer Flamenco Series opens Wednesday at The Lodge at Santa Fe.

### Santa Fe Vintage Car Club Show Downtown Plaza

Vintage, classic, muscle, sports, exotic, hot rods, and trucks; 11 a.m.-4 p.m.; held in support of the Holiday Shop with a Cop program; [santafevintagecarclub.org](http://santafevintagecarclub.org).

## MONDAY 7/5

### Outdoors

#### Hiking trails

[Alltrails.com/us/new-mexico/santa-fe](http://Alltrails.com/us/new-mexico/santa-fe)

City limits: Dale Ball, Frency's Field/Santa Fe River; Santa Fe National Forest: Atalaya Mountain, Chamisa, Deception Peak, Lower Río en Medio, Nambé Lake, Picacho Peak, Santa Fe Baldy, Tesuque Peak via Aspen Vista.

## TUESDAY 7/6

### Events

#### Del Sur Santa Fe Farmers' Market opening day

Presbyterian Santa Fe Medical Center parking lot, 4801 Beckner Rd.

Open 3-6 p.m. Tuesdays through September; 505-983-4098, [santafefarmersmarket.com](http://santafefarmersmarket.com).

#### Santa Fe Tuesday Farmers' Market

1607 Paseo de Peralta, 505-983-4098

Open weekly through November; summer hours 7 a.m.-1 p.m.; [santafefarmersmarket.com](http://santafefarmersmarket.com).

### Outdoors

#### Cerrillos Hills State Park

[Cerrilloshills.org/visit-the-park](http://Cerrilloshills.org/visit-the-park)

Open daily, with hiking, equestrian, and mountain-biking trails; 505-474-0196.

## WEDNESDAY 7/7

### Theater/Dance

#### La Emi Summer Flamenco Series opening night

Benítez Cabaret at The Lodge at Santa Fe, 750 N. St. Francis Dr., 505-992-5800

Guest appearances by Vicente Griego, with Gabriel Osuna, Olivia Rojas, and others through Sept. 5; 8 p.m. Wednesdays-Saturdays, doors 7:15 p.m.; 2 p.m. Sundays, doors 1:15 p.m.; \$20-\$50.

### Books/Talks

#### Friends of History First Wednesday Lecture

[Friendsofhistorynm.org](http://Friendsofhistorynm.org)

*Santa Rita, New Mexico: Two Centuries of Copper Mining*, with author and history prof. Chris Huggard and historian Terrence M. Humble; noon-1 p.m., via [youtu.be/7GG033wzzec](http://youtu.be/7GG033wzzec); donations accepted.

### Events

#### Yannick: An Artist's Journey

Lensic Performing Arts Center, 211 W. San Francisco St., 505-988-1234

Screening Susan Froemke's documentary about Yannick Nézet-Séguin's career as music director of the Metropolitan Opera; 6:30 p.m.; \$22; call for tickets; encore 10 a.m. July 10.

## THURSDAY 7/8

### In Concert

#### Santa Fe Plaza Concert Series

Downtown

The season opens with nuevo-Latino band Manzaneras, with R&B band J.J. and the Hooligans 6 p.m.; no charge; [ampconcerts.com](http://ampconcerts.com).

### Books/Talks

#### Rotary Presents!

[Eborins44@gmail.com](mailto:Eborins44@gmail.com)

Rotary Club of Santa Fe free, virtual speakers series; today: Daniel Zimmerman, New Mexico Department of Cultural Affairs director; noon.

## OUT OF TOWN

### Albuquerque

#### Emerge from the Pandemic with ...

Casa Flamenca, 401 Rio Grande Blvd., NW, 313-595-1540

The outdoor concert series continues with Toni Morgan and the Hip Pocket Rhythm Section; 7:30 p.m. Friday, July 2; \$20; [ampconcerts.org](http://ampconcerts.org).

#### Harwood Art Center

1114 Seventh St., NW, 505-242-6367

*SURFACE: Emerging Artists of New Mexico*, group show; virtual opening reception and artist talks 5:30 p.m. Thursday, July 8, register at [harwoodartcenter.org/current-exhibitions/surface-emerging-artists-of-nm](http://harwoodartcenter.org/current-exhibitions/surface-emerging-artists-of-nm); view by appointment or online through July 29; [harwoodartcenter.org](http://harwoodartcenter.org).

### Eagle Nest

#### Fireworks over Eagle Nest Lake

Dusk Sunday, July 4, preceded by a festival in the park; [angelfireresort.com/fourth-of-july](http://angelfireresort.com/fourth-of-july).

### Los Alamos

#### 14th Annual Los Alamos ScienceFest

Fuller Lodge and Ashley Pond

Free, virtual and in-person events, Tuesday, July 6-July 11; panel discussions, demonstrations, and outdoor movies; [losalamossiencefest.com](http://losalamossiencefest.com).

### Red River

#### Fourth of July parade and celebration

Town-wide

Live music and activities; 10 a.m.; [angelfireresort.com/fourth-of-july-at-angel-fire-resort](http://angelfireresort.com/fourth-of-july-at-angel-fire-resort).

### Taos

#### Fifth Annual Pancake Breakfast

Historic Taos Plaza

Flapjacks served 8-10 a.m. Sunday, July 4; includes presentations and a performance by Taos Pueblo's Star Road Dance Company.

#### Borromeo String Quartet, with Ara Gregorian & Robert McDonald

Taos Tent at Taos Ski Valley

Music of Ravel, Beethoven, and Brahms; 4 p.m. Sunday, July 4; \$25; [taoschoolofmusic.ocm/](http://taoschoolofmusic.ocm/) July-4-faculty-concert.



7/7

"Yannick: An Artist's Journey" screening at the Lensic

### Los Lobos

Kit Carson Park, 211 Paseo del Pueblo Norte, Taos

L.A.-based rock band; 7:30 p.m. Sunday, July 4, gates 4 p.m.; opening acts: Mariachi Calor, with Carlos Medina (5 p.m.); Michael Hearne (6 p.m.); [holdmyticket.com/tickets/374847](http://holdmyticket.com/tickets/374847); free fireworks display follows.

## PEOPLE WHO NEED PEOPLE

### Artists

#### Recycle Santa Fe Art Festival

Applications sought for Nov. 12-14 market at Santa Fe Community Convention Center; all work must be original and at least 75 percent recycled; booth fees \$375 by personal check, \$385 by credit card; Sept. 24 deadline; P.O. Box 4244, Santa Fe, NM 87502-4244; 505-603-0558; [recycle-santafe.org/art-market-application](http://recycle-santafe.org/art-market-application).

### Filmmakers

#### Madrid Film Festival

Entries for shorts (30 minutes or less) accepted through July 26 for late-August event; cash prizes awarded; [theaterofdeath.org](http://theaterofdeath.org).

#### Santa Fe Film Institute student grants and scholarships

Grant applications due by July 26, scholarship applications, July 31; [santafefilmstitute.org](http://santafefilmstitute.org).

#### Santa Fe Independent Film Festival

Call for narrative, animated, student, and indigenous films for Oct. 13-17 event; deadline July 16; [santafeindependent.com](http://santafeindependent.com).

## PASA KIDS

### ¡Cuentos! Storytelling for All Ages

Rancho de las Golondrinas, 334 Los Pinos Rd., 505-471-2261

Held under shade trees by the historic schoolhouse; 11:30 a.m.-12:30 p.m. Saturdays and Wednesdays through Oct. 2; by museum admission (bring a picnic lunch).

#### Santa Fe Children's Museum

[Santafechildrensmuseum.org/explore/calendar/visit-the-museum-garden](http://Santafechildrensmuseum.org/explore/calendar/visit-the-museum-garden)

Outdoor spaces/gardens; 9-10:30 a.m., 11 a.m.-12:30 p.m., and 1:30-3 p.m. Saturdays; \$10; discounts available; reservations required. ◀



Taos School of Music presents the Shanghai Quartet July 18.

## Music

### Rumelia Collective

Rose's Kitchen at Reunity Resources community farm, 1829 San Ysidro Crossing  
Local Balkan-music quartet; 7 p.m. July 9; \$10 in advance, \$15 at the door; reunityresources.com/live-music.html; outdoor performance.

### Chatter (In) SITE

SITE Santa Fe, 1606 Paseo de Peralta, 505-989-1199  
György Kurtág's *Kafka Fragments* performed by soprano Ingela Onstad and violinist David Felberg; 10:30 a.m.; July 10; \$5-\$16; chatterabq.org/boxoffice.

### Porgy & Bess

Lensic Performing Arts Center, 211 W. San Francisco St.  
Rebroadcast of Metropolitan Opera's premiere of James Robinson's production from the 2019-2020 season; 6:30 p.m. July 14, 10 a.m. July 17; \$22.

### Outpost Performance Space

#### Thursday Jazz Nights

210 Yale Blvd., SE, Albuquerque, 505-268-0044  
The Long Shot Trio July 15; Alex Murzyn on saxophone, Terry Burns on bass, and Cal Haines on drums; 8 p.m.; \$15 and \$20, holdmyticket.com/tickets/376560.

### Taos School of Music Chamber Music Festival

Taos Tent at Taos Ski Valley  
Shanghai Quartet 4 p.m. July 18, music of Beethoven, Zhou Long, and Smetana; Robert McDonald piano recital 4 p.m. July 21, music of Bach and Schumann; \$25; Taoschoolofmusic.com.

### Liz Longley

Taos Center For The Arts, 133 Paseo del Pueblo Norte  
Nashville-based singer-songwriter; 7:30 p.m. July 23; \$15 and \$18; tcataos.org/calendar.

### Yonder Mountain String Band

The Bridge at Santa Fe Brewing Company, 37 Fire Pl., 505-557-6182

Progressive-bluegrass; 7:30 p.m. July 28; \$33 in advance, \$38 day of show; 505-886-1251, holdmyticket.com/tickets/375074.

### Meow Wolf concerts

Meow Wolf, 1352 Rufina Circle, 505-395-6369  
Folk-rockers The Mountain Goats, 7 p.m. Aug. 16, \$25; country singer-songwriter Danny Kiranos, known as Amigo the Devil, 7 p.m. Aug. 18; \$18 in advance, day of show \$22; sfevents.meowwolf.com

### Ghost Ranch Weekend

Ghost Ranch, 280 Private Dr., Abiquiú  
Aug. 20: Rosanne Cash, Margo Price, and Shannon McNally; Aug. 21: Neko Case, Valerie June, Bedouine, and Lyla June; \$88-\$175; Hold My Ticket box office, 505-886-1251; ampconcerts.org/event/375288/ghost-ranch-weekend.

### Keb' Mo'

Hipico polo field, 100 S. Polo Dr.  
Brother Brothers open; 7:30 p.m. Aug. 24; \$69 and \$89; 505-886-1251, holdmyticket.com/tickets/375075.

### The Mavericks

Hipico polo field, 100 S. Polo Dr.  
Eclectic country-rock; 7 p.m. Aug. 25; \$59 in advance, \$64 day of show; holdmyticket.com/tickets/360407.

### Los Alamos Concert Association 75th Anniversary Season

Duane Smith Auditorium, 1300 Diamond Dr., Los Alamos  
Opening concert Sept. 19: string quartet Cuarteto Latinoamericano, Academy of St. Martin

# IN THE WINGS

in the Fields chamber ensemble Oct. 26, Maxwell String Quartet Jan. 14, Poulenc Trio (oboe, bassoon, piano) Feb. 11, and pianist Simon Trpčeski April 10; \$30, 5-concert package \$140; losalamosconcert.org/tickets.html.

### Marty Stuart & His Fabulous Superlatives

Lensic Performing Arts Center, 211 W. San Francisco St., 505-988-1234  
Touring in celebration of the 20th anniversary of his album, *The Pilgrim*; 7:30 p.m. Oct. 3; \$39-\$49, VIP tickets \$135; call box office for tickets.

### The Psychedelic Furs' Made of Rain tour

Lensic Performing Arts Center, 211 W. San Francisco St., 505-988-1234  
First album in 29 years; 7:30 p.m. Oct. 7; \$39-\$49; tickets available by phone only (10 a.m.-4 p.m. Mondays-Fridays, noon-4 p.m. Saturdays).

## Theater/Dance

### Othello: The Remix

Santa Fe Playhouse, 142 E. De Vargas St., 505-988-4262  
An "ad-RAP-tation" by rapping theater artists The Q Brothers; Aug. 12, 13, 14, and 15; \$25; santafeplayhouse.org/events/othello-the-remix.

## Events, Etc.

### The Moving Land: 60+ Years of Art by Linda Lomahaftewa

Allan Houser Art Park, 108 Cathedral Pl.  
IAIA Museum of Contemporary Indian Art hosts a closing reception 5-7 p.m. July 16; no charge.

### 33rd Contemporary Hispanic Market

Downtown, along Lincoln Avenue  
Annual event; 8 a.m.-5 p.m. July 24 and 25; 505-331-5162; contemporaryhispanicmarketinc.com.

### 69th Traditional Spanish Market

Downtown, on the Plaza and surrounding streets  
Works by adult and youth artisans; 8 a.m.-5 p.m. July 24 and 25; spanishcolonial.org.

### Wheelwright Museum Curator's Circle

Wheelwright.org/events  
An informal, virtual salon series featuring artists showing works in the *Indigenous Women: Border Matters* exhibit; 3-4 p.m. July 29, Makaya Lewis and Daisy Quezada Ureña in conversation; no charge.

### Objects of Art Santa Fe

El Museo Cultural de Santa Fe, 555 Camino de la Familia  
Contemporary works, books, textiles, and tribal art represented by 70-plus galleries and exhibitors; pre-opening cocktail hour 5 p.m. Aug. 12; \$125; opening-night party 6-9 p.m. Aug. 12; \$75; shows 11 a.m.-5 p.m. Aug. 13-15; \$15 per day, \$25 run of show; objectsofartsantafe.com.

### 43rd Annual Whitehawk Antique Indian & Ethnographic Art Show

Santa Fe Community Convention Center, 201 W. Marcy St.  
Opening-night party 6 p.m. Aug. 13; \$85; shows 10 a.m.-5 p.m. Aug. 14-16; \$15 per day, \$25 run of show; tickets sold at the door; whitehawkshows.com.

### Sovereign Santa Fe

La Fonda Lumpkins Ballroom and Mezzanine, 100 Old Santa Fe Trail  
Free exhibit of contemporary works by 40-plus Native American artists; plus, the Pivot: Skateboard Deck Art exhibition, and Sovereign Market Annex vending booths; 10 a.m.-8 p.m. Aug. 16-22; 575-751-4278, farahnheight@gmail.com.

### Pathways Native Arts Market

Buffalo Thunder Resort & Casino, 20 Buffalo Thunder Trail  
Indoor and outdoor booths; 500-plus artists; Aug. 20-22; includes live entertainment, food trucks, and a VIP preview event; poehcenter.org.

### 99th Indian Market

Downtown Plaza and online sales  
Ticketed event; Aug. 21 and 22; performances and music; 6 a.m.-5 p.m. daily with \$40 admission; 8 a.m.-5 p.m. with \$20 daily admission; discounts available; swaia.org.

### Free Indian Market

Scottish Rite Temple and Federal Park (downtown)  
Indoor and outdoor booths; 500-plus artists; 8 a.m.-5 p.m. Aug. 21 and 22; facebook.com/freeindianmarketshow.

### Santa Fe Wine & Chile Fiesta

Magers Field Park at Fort Marcy Complex and participating restaurants  
Grand tastings, 90 wineries, nightly wine dinners, cooking demonstrations, and live auction; Sept. 22-26; grand tastings \$175, two-day pass \$300 (tickets go on sale Saturday July 5); 505-438-8060, santafewineandchile.org.



## AT THE GALLERIES

### Santa Fe

#### 5. Gallery

2351 Fox Rd., Suite 700, 505-257-8417

*Field of Heaven*, drawings by Marc Baseman; through July.

#### Axle Contemporary

505-670-5854 or 505-670-7612

988, site-specific installation by c marquez. Visit [axleart.com](http://axleart.com) for van locations through July 18.

#### Blue Rain Gallery

544 S. Guadalupe St., 505-954-9902

*More Than Glass*, group show of glassworks; through July 17.

#### Convergence Gallery

634 Canyon Rd., 505-986-1245

*The Tree My Lover*, paintings by Diana Stetson; through July 22.

#### Gerald Peters Gallery

1005 Paseo de Peralta, 505-954-5700

*Gray Salt — Lost in Ah-Shi-Sle-Pah*, paintings by Scott Kelley; through July 24; *Penelope Gottlieb: New Works*, paintings; through July.

#### Manitou Galleries

225-B Canyon Rd., 505-986-0440

*Ray Roberts & Navajo Blankets*, paintings and weavings; through Saturday, July 3.

#### Meyer Gallery

225 Canyon Rd., 800-779-7387

Paintings by David Dornan; through Thursday, July 8.

#### Pie Projects

924 Shoofly St.

*Summertime at Pie Projects*, portraits in Plexiglas by Joanne Lefrak and mixed-media paintings by Martha Tuttle; through July 10.

#### Santa Fe Community College

##### Visual Arts Gallery

505-428-1501, [sfcc.edu/southwest-monochromes](http://sfcc.edu/southwest-monochromes)

*Southwest Monochromes*, virtual exhibit of B&W photographs by Jim Wysong; through Aug. 12.

#### Studio WFC

815-D Early St., 303-587-8074

*All the Pretty Horses*, paintings by Wendy Foster, Cheri O'Brien, and Ron Patterson; through Saturday, July 3.

#### TAI Modern

1601-B Paseo de Peralta, 505-984-1387

Retrospective exhibit of Torii Ippo bamboo art; through July 24.

#### Tierra Mar Gallery

225 Canyon Rd., 505-372-7087

Paintings by Jono Tew; through Monday, July 5.

#### Ventana Fine Art

400 Canyon Rd., 505-983-8815

Paintings by Angus; through Sunday, July 4.

#### VIVO Contemporary

725-A Canyon Rd., 505-982-1320

*Some Kind of Wonderful*, group show of works by gallery artists; through Sunday, July 4.

#### Zane Bennett Contemporary

435 S. Guadalupe St., 505-982-8111

*Textures*, print and fiber group show; through July.

### Albuquerque

#### 516 ARTS

516 Central Ave., SW, 505-242-1445

*Dust Specks on the Sea*, sculptural works by artists from the Caribbean; through Sept. 18; no charge.

#### Richard Levy Gallery

514 Central Ave., SW, 505-766-9888

*Made in ABQ*, 30th anniversary group show; through July 10.

### Los Alamos

#### Fuller Lodge Art Center

2132 Central Ave., 505-662-1635

Native American, Hispanic, tribal African, Oceanic, Native Alaskan art, and other globally collected art from the Los Alamos Museum of Art collection; through July 24.

## MUSEUMS & ART SPACES

### Santa Fe

#### Coe Center for the Arts

1590-B Pacheco St., 505-983-6372

*The Virtual Coe*: Online collection of African, Asian, European, Native American, and Oceanic objects; [coeartscenter.org](http://coeartscenter.org). Currently closed.

#### El Rancho de las Golondrinas

334 Los Pinos Rd., 505-471-2261

Living history museum located on 200 acres, dedicated to the history, heritage, and culture of 18th and 19th century New Mexico; [golondrinas.org](http://golondrinas.org). Open Wednesdays-Sundays through Oct. 3.

#### Georgia O'Keeffe Museum

217 Johnson St., 505-946-1000

Paintings, drawings, pastels, and watercolors represented in: *Becoming Georgia O'Keeffe*, *Georgia O'Keeffe at Lake George, 1918-2928*, *My New Yorks*, *O'Keeffe's New Mexico*, *Ritz Tower*, *Seeing Beyond/Ver más allá*, *The Natural World*, and *Travels*; [okeeffemuseum.org](http://okeeffemuseum.org). Open Thursdays-Mondays advance (online ticket purchase required).

#### IAIA Museum of Contemporary Native Arts

108 Cathedral Place, 888-922-4242

*Michael Naminga: Altered Landscape*, photo-based work; through Sunday, July 4 • *The Moving Land: 60+ Years of Art* by Linda Lomahaftewa, multidisciplinary works and *Amanda Beardsley: Future Vibes*, mural; through July 18 • *2020/2021 IAIA Senior Exhibition*, reflecting on issues of cultural/gender identity and discrimination; through Oct. 10 • *Experimental exPRESSion: Printmaking at IAIA, 1963-1980*; through Feb. 20, 2022 • *Daniel McCoy Jr.: Experimental exPRESSion*, mural; through Feb. 27, 2022; [iaia.edu/mocna](http://iaia.edu/mocna). Closed Tuesdays.

#### Meow Wolf

1352 Rufina Circle, 505-395-6369

*The House of Eternal Return*, evolving, interactive installation; [meowwolf.com/visit/santa-fe](http://meowwolf.com/visit/santa-fe). Closed Tuesdays.

### Museum of Indian Arts and Culture

Museum of Indian Arts and Culture, 710 Camino Lejo, Museum Hill, 505-476-1269

*Collecting Jewelry: Curator H.P. Mera's Trip to Navajo Country in 1932*, items from the collection; through Dec. 1 • *A Place in Clay*, work by 2020 Living Treasures award winner, Jemez Pueblo potter Kathleen Wall; through May 6, 2022 • *Clearly Indigenous: Native Visions Reimagined in Glass*, group exhibit; through June 16, 2022; [indianartsandculture.org](http://indianartsandculture.org). Open daily.

### Museum of International Folk Art

706 Camino Lejo, Museum Hill, 505-476-1200

*From Combat to Carpet: The Art of Afghan War Rugs*, war-related iconography; through Sept. 5 • *Glass: Selections from the Collection*; through Jan. 30, 2022 • *Yōkai: Ghosts & Demons of Japan*, Muromachi Period scroll paintings, Edo Period woodblock prints, and contemporary folk art; through August 2022. Long-term exhibits: *Música Buena: Hispano Folk Music of New Mexico*, exploring the genre's roots *Multiple Visions: A Common Bond*, works in the Alexander Girard Wing • *Lloyd's Treasure Chest: Folk Art in Focus*, thematic displays from the permanent collection • *#mask: Creative Responses to the Global Pandemic*, fashionable and political face masks; [moifa.org](http://moifa.org). Open daily.

### Museum of Spanish Colonial Art

750 Camino Lejo, Museum Hill, 505-982-2226

*Trails, Rails, and Highways: How Trade Transformed the Art of Spanish New Mexico*, works from the collection; through August 2022. Long term: *Pueblo-Spanish Revival Style: The Director's Residence and the Architecture of John Gaw Meem*, highlighting aspects of the museum's architectural features; through Oct. 1, 2022 • *Youth Gallery*, Youth Market artists' works; [spanishcolonial.org](http://spanishcolonial.org). Call for hours of operation.

### New Mexico History Museum/

#### Palace of the Governors

105 W. Palace Ave., 505-476-5100

*Palace Seen and Unseen: A Convergence of History and Archaeology*, documents, photographs, and artifacts; long term (see story, Page 26) • *Looking Back: Reflecting on Collections*, works reflecting the museum's collecting history; through Oct. 17 • *Working on the Railroad*, archival images from the Palace of the Governors and the Library of Congress; through Oct. 18. Core exhibits: *The Massacre of Don Pedro Villasur*, graphic art by Turner Avery Mark-Jacobs • *The First World War*, ephemera relating to New Mexicans' contributions

• *Setting the Standard: The Fred Harvey Company and Its Legacy*, objects from the collection and photos from Palace of the Governors photo archives • *Telling New Mexico: Stories From Then and Now*, artifacts, photographs, films, and oral histories; [nmhistorymuseum.org](http://nmhistorymuseum.org). Open daily.

### New Mexico Museum of Art

107 W. Palace Ave., 505-476-5072

*A Fiery Light: Will Shuster's New Mexico*, celebration the centennial anniversary of the artist's arrival in the Southwest; through July 25 • *Breath Taking*, contemporary multi-disciplinary works exploring the nature of breathing; through Sept. 5 • *Southwest Rising: Contemporary Art and the Legacy of Elaine Horwitch*; through Jan. 2, 2022; [nmmuseum.org](http://nmmuseum.org). Open daily.

### Santa Fe Botanical Garden

715 Camino Lejo, Museum Hill, 505-471-9103

A living museum on 14 acres: Ojos y Manos, Orchard Gardens, Courtyard Gardens, and Arroyo Trails; [santafebotanicalgarden.org](http://santafebotanicalgarden.org). Closed Tuesdays and Wednesdays.

### SITE Santa Fe

1606 Paseo de Peralta, 505-316-3596

*May Stevens: Mysteries, Politics, and Seas of Words*; through Aug. 1. *Mary Weatherford: Canyon — Daisy — Eden*, paintings; through Sept. 5; [sitesantafe.org](http://sitesantafe.org). Open Thursdays-Sundays.

### Wheelwright Museum of the American Indian

704 Camino Lejo, Museum Hill, 505-982-4636

*Shonto Begay: Eyes of the World*, narrative paintings; through Oct. 3 • *Indigenous Women: Border Matters*, group exhibit; through Oct. 3. Long term: *Center for the Study of Southwestern Jewelry*, devoted to Diné and Pueblo traditions • *Medicinal Healer, An Artist to Remember: Charlie Willetto*; folk-art carvings; [wheelwright.org](http://wheelwright.org). Open Tuesdays-Saturdays.

### Albuquerque

#### Harwood Art Center

1114 Seventh St., NW, 505-242-6367

*SURFACE: Emerging Artists of New Mexico*, multidisciplinary works; virtual opening reception and artist talks 5:30 p.m. Thursday, July 8, register at [harwoodartcenter.org/current-exhibitions/surface-emerging-artists-of-nm](http://harwoodartcenter.org/current-exhibitions/surface-emerging-artists-of-nm); view by appointment or online through July 29; [harwoodartcenter.org](http://harwoodartcenter.org). (See story, Page ?)

#### National Hispanic Cultural Center

1701 Fourth St., SW, Albuquerque, 505-246-2261

*Southwest of Eden: The Art of Adam and Eve*, works from the Joyce Kaser Collection; through Oct. 17 • *Desde Mi Balcón/From My Balcony*, photographs taken by citizens of Spain during the COVID-19 pandemic; through Sept. 10 • *Aquí Estamos*, art works from the permanent collection; through Feb. 27, 2022; [nationalhispaniccenter.org](http://nationalhispaniccenter.org). Open Tuesdays-Sundays.

### Taos

#### Harwood Museum of Art

238 Ledoux St., 575-758-9826

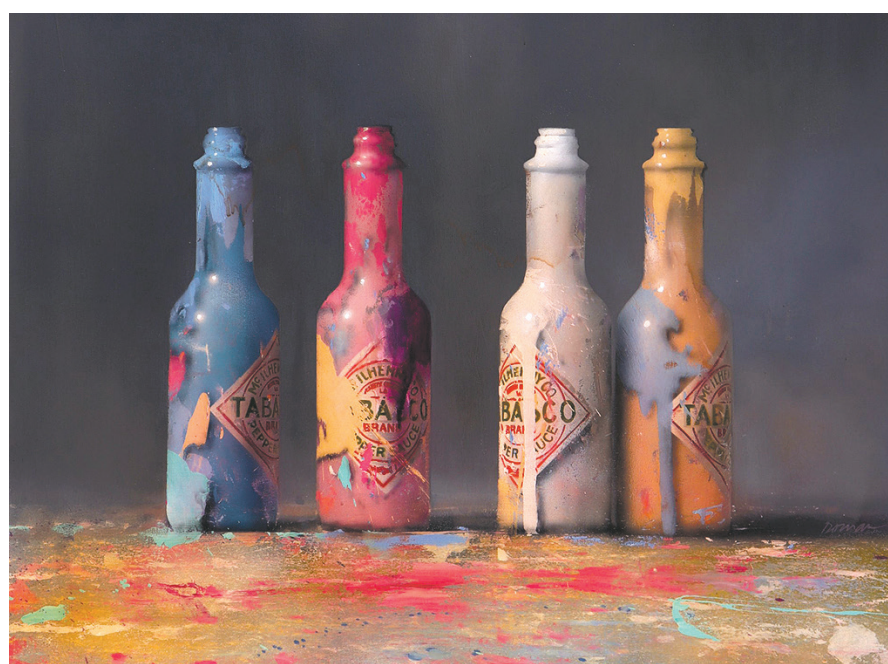
*Santo Lowride: Norteño Car Culture and the Santo Tradition*, group show; through October 10. Core exhibit: Northern New Mexico Hispanic works; [harwoodmuseum.org](http://harwoodmuseum.org). Open Thursdays-Sundays.

#### Taos Art Museum at Fechin House

227 Paseo del Pueblo Norte, 575-758-2690

*Through the Eyes of Fechin*, paintings by Nicolai Fechin, through Jan. 9, 2022

• *From the Permanent Collection: Taos Society of Artists*, paintings by Joseph Henry Sharp, E. Irving Couse, Oscar E. Berninghaus, W. Herbert Dunton, Ernest L. Blumenschein, and Bert Phillips; through Jan 9, 2022; [taosartmuseum.org](http://taosartmuseum.org). Closed Mondays.



Meyer Gallery (225 Canyon Rd.) shows paintings by David Dornan through Thursday, July 8.