

STATE OF NEW MEXICO

Executive Office Building

Historic Districts Review Board Submission

fbt | architects



luis vidal + architects

 **ARCADIS**



JENKINS GAVIN
LAND USE | PROJECT MANAGEMENT

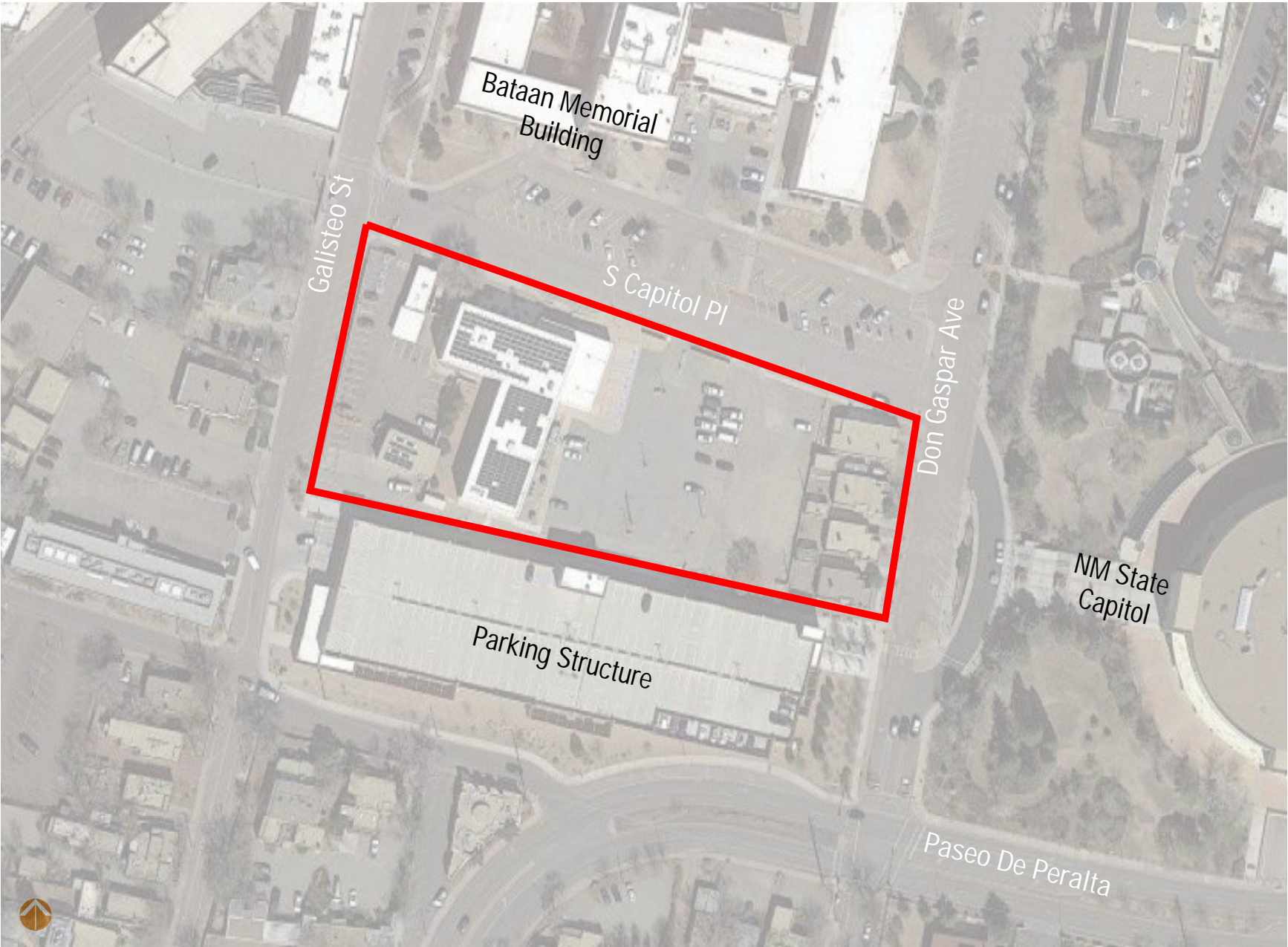
November 10, 2025



Existing Conditions

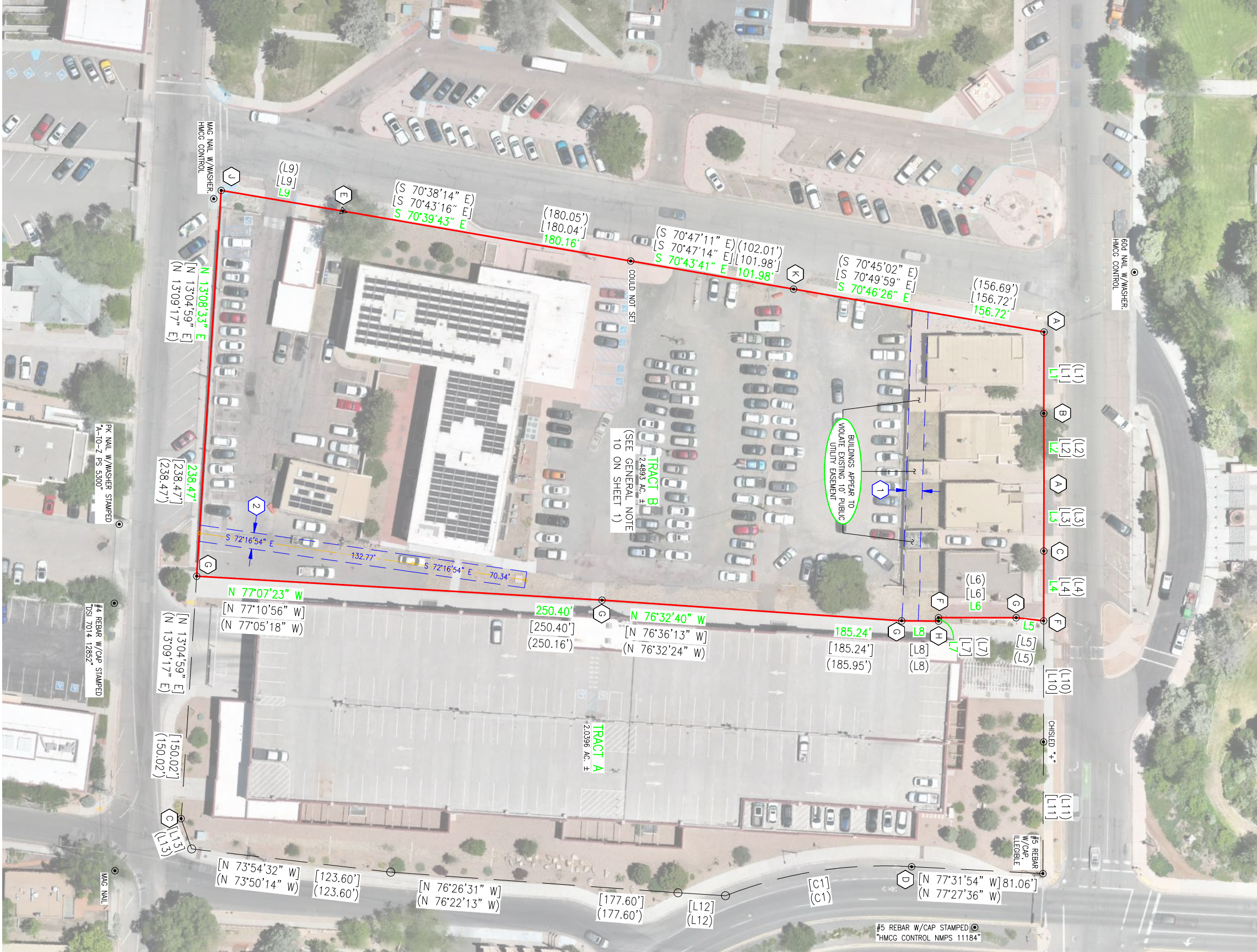
SITE LOCATION

The Proposed project site is located across from the Bataan Memorial Building, and bordered by Galisteo Street to the west, South Capitol Place to the north, and Don Gaspar Avenue to the east. To the south is the existing Public Parking Garage and to the east is the New Mexico State Capitol.



EXISTING SITE

There are contributing structures on the current site that will require demolition for the construction of the new State of New Mexico Executive Office Building (NMEOB). The larger of the structures is the Concha Ortiz Y Pino Building. There are also four casitas that are addressed to Don Gaspar Ave.



SITE CONTEXT

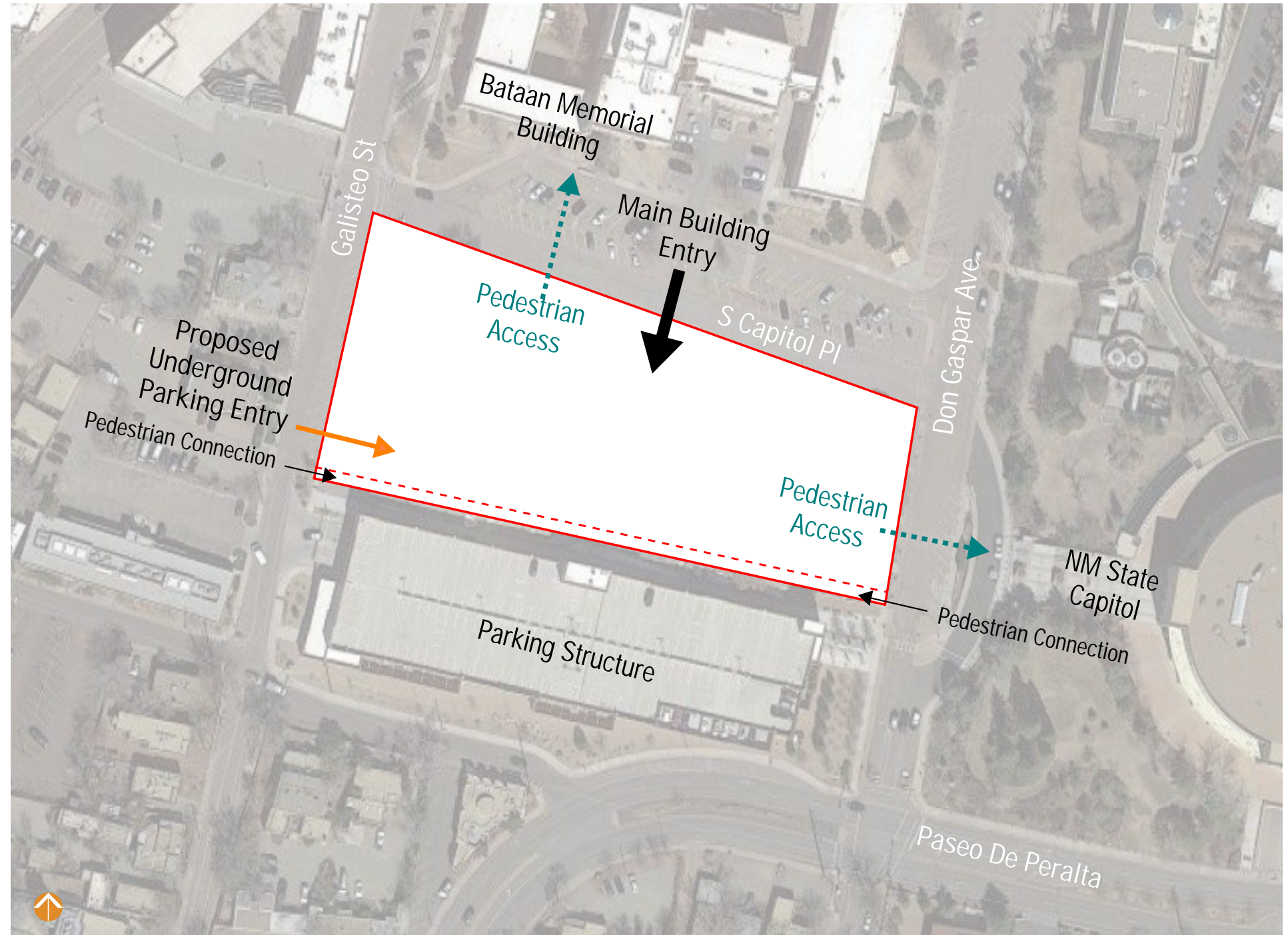


PROPOSED ACCESS

There are multiple buildings in the surrounding area that are important for pedestrian connection. Primarily the New Mexico State Capitol building to the east, the Bataan building and adjacent annexes to the north, and the State's Attorney General's Office to the west. Consideration for plazas, pathways, portals, and intuitive wayfinding have been woven into the plan. The main entrance to the building is planned to face the primary street of South Capitol Place.

Parking is planned to be below grade and the entrance to the parking is planned on the west, adjacent to the entrance/exit of the existing public parking garage. Understanding the vehicular flow and one way traffic for the site, it was logical to plan for the vehicular access to be located at the southwest corner of the site. This reduces additional traffic in the area by removing cars sooner and helping improve pedestrian movements on the northern part of the site due to its separation.

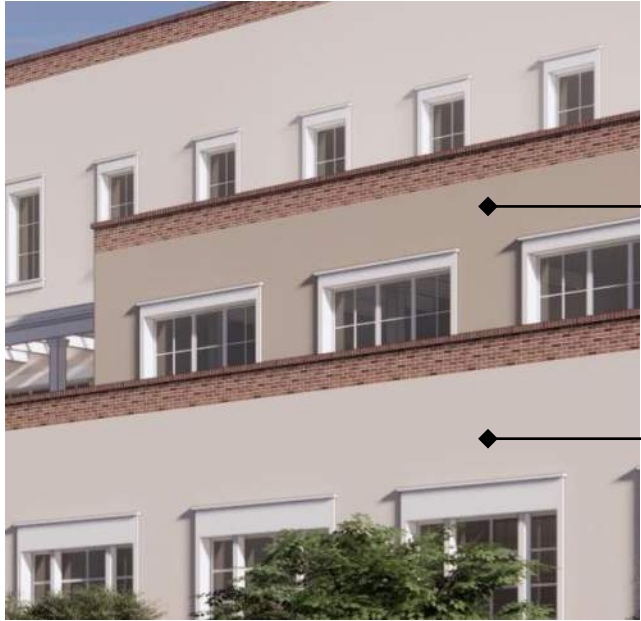
An alley has been provided to the south between the proposed building and the existing parking garage. The enhanced paved area and will be designed to support fire access and control. The pedestrian street will also allow for east/west movement between the structures and allow for easy access to the State Capitol Building to the east.



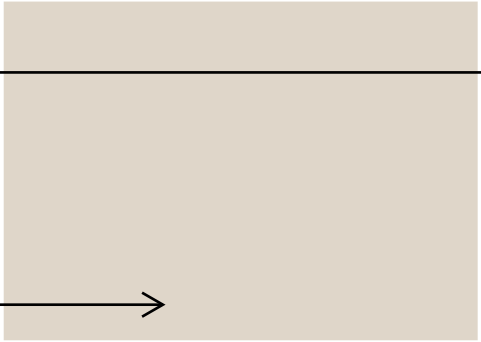
Site Circulation Concepts

Exterior Finishes





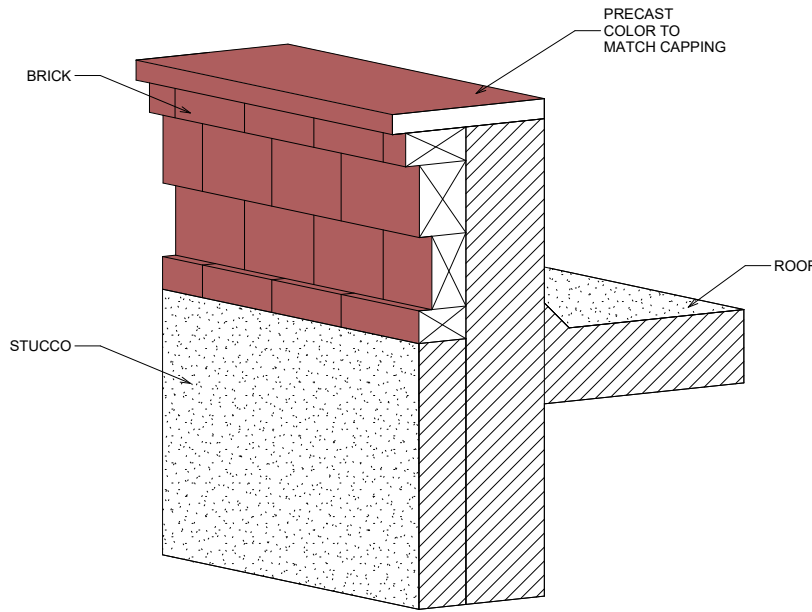
Sika-Parex Stucco Colors



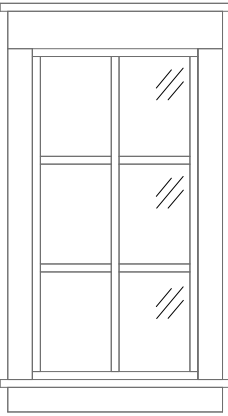
Moondance 3027 (LRV 66)



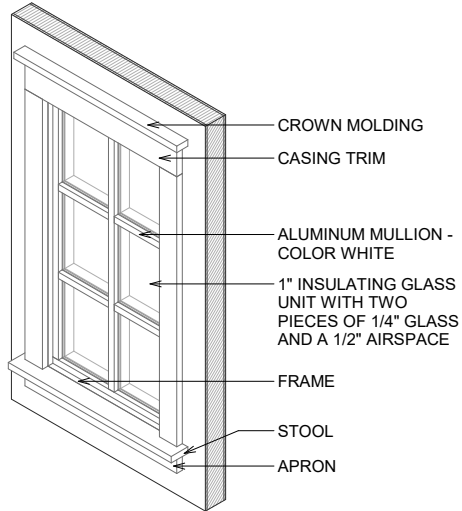
Rose T019 (LRV 55)



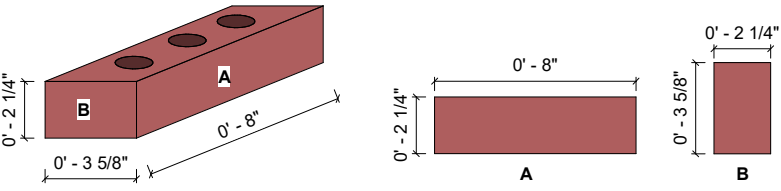
1 CORNICE AXO
S 1 1/2" = 1'-0"



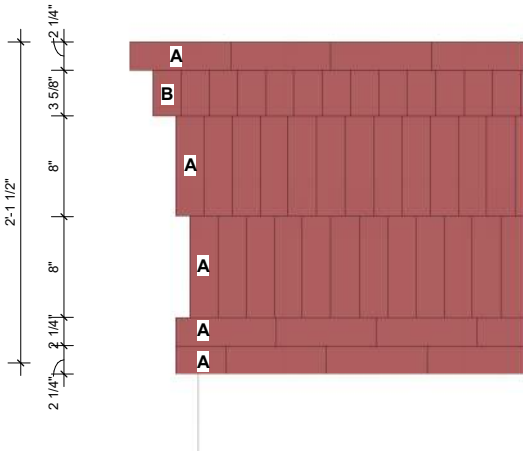
5 DET_EL_WINDOW 01
S 1/2" = 1'-0"



4 DET_3D_AXONOMETRIC
S



3 BRICK SIZE AND DISPOSITION
S 3" = 1'-0"



2 CORNICE ELEVATION
S 1 1/2" = 1'-0"

ARCHITECTURAL

Site Plan



Proposed Planting Palette

TREES



First Blush Cherry
Prunus 'JFS - KW15 PP 28248
24' x 12' Pink spring flowers, nice fall color



Vanderwolf Pine
Pinus flexis 'Vanderwolf'
25'x25' Soft needles, pyramid shape



Zelcova 'City Sprite'
Zelcova serrata
23' x 18' Yellow fall color, oval shape



Littleleaf Linden
Tilia cordata
20' x15' Yellow fall color



New Mexico Olive
Foresteria neomexicana
24' x12' Pink spring flowers, nice fall color



Chanticleer Pear
Pyrus 'Chanticleer' calleryana
30' x 15' White spring flowers, yellow/red



Kwanzan Cherry
Prunus serrulata 'Kwanzan'
30' x 20' Pink spring flowers, vase shaped



Frontier Elm
Ulmus 'Frontier'
40'x 30' Pink spring flowers, vase shaped



Pin Oak
Quercus palustris
25' x 25' Red-orange fall foliage



Mesa Glow Maple
Acer grandidentatum 'Mesa Glow'
25' x 18' Compact, red-orange fall foliage



Creeping Cascade Cherry
Prunus serrulata
12' x 12'

Proposed Planting Palette

SHRUBS, GRASSES, AND GROUND COVER



'Elijah' Blue Fescue
Festuca glauca 'Elijah Blue'
1' x 1' Icy blue, mounded, semi-evergreen



Karl Forester Grass
Calamagrostis acutiflora
5'x 3' Dramatic red-bronze flower spike



Lydia Broom
Genista lydia
2'x2' Yellow spring flowers, mounded



Greenleaf Manzanita
Arctostaphylos patula
3'x4' Broadleaf evergreen, pink flowers



'Red Drift' Carpet Rose
Rosa hybrid 'Meigalpio'
2'x3' Gentle spreading, red flower clusters



Grey Creeping Germander
Teucrium chamaedrys
1' x 2' Creeping, purple-red flowers



Indian Hawthorn 'Blueberry Muffin'
Raphiolepis umbellata 'Blueberry Muffin'
2'x3' Dense rounded, pink-white flowers



Goldfinger Potentilla
Potentilla fruticosa 'Goldfinger'
3' x 4' Yellow flowers, fine texture, mounded



Gold Sedum
Sedum rupestre 'Angelina'
2'x2' Yellow spring flowers, mounded



Geranium
Arctostaphylos patula
3'x4' Broadleaf evergreen, pink flowers



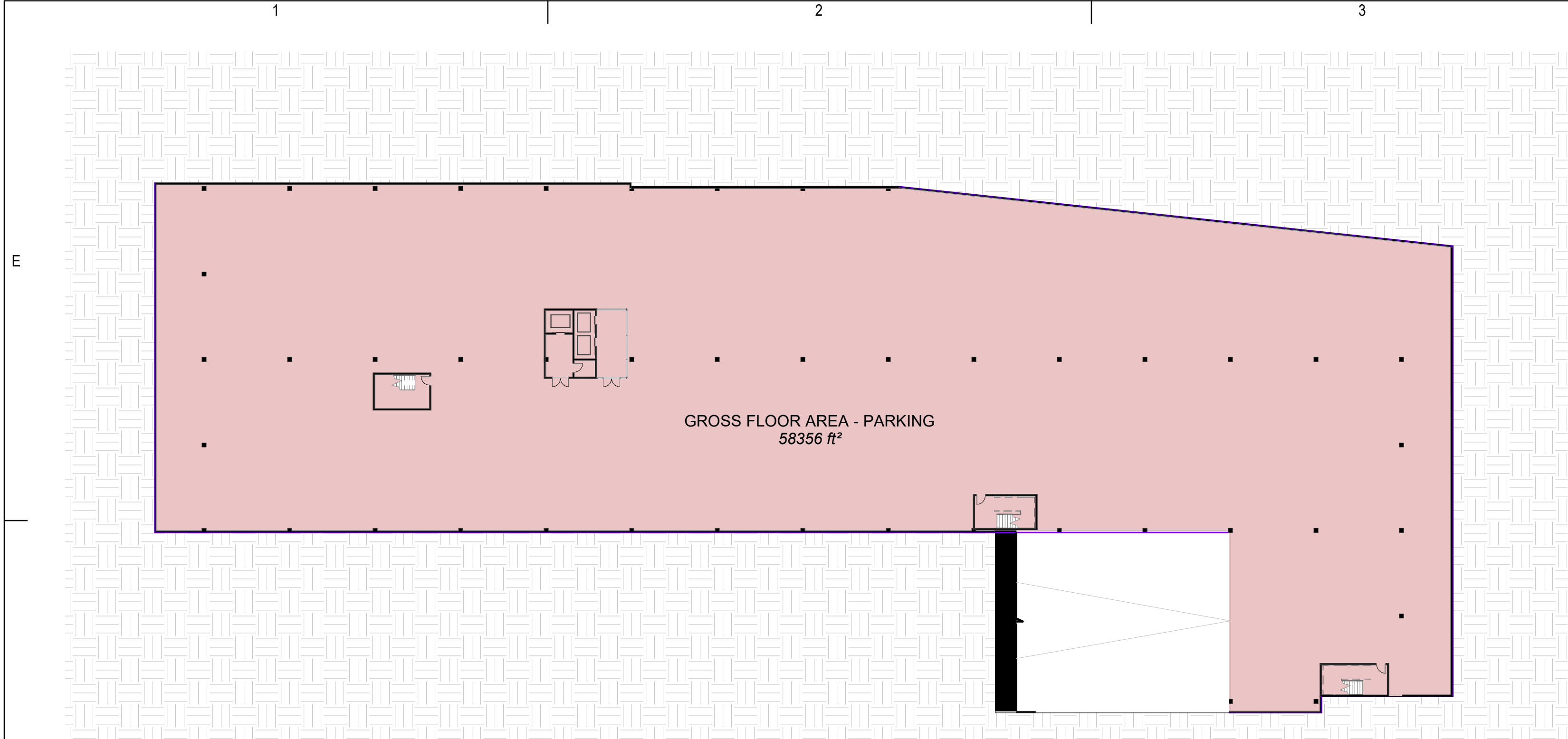
Hidcote English Lavender
Lavandula angustifolia 'Hidcote'
2'x2' Compact, fragrant purple flowers



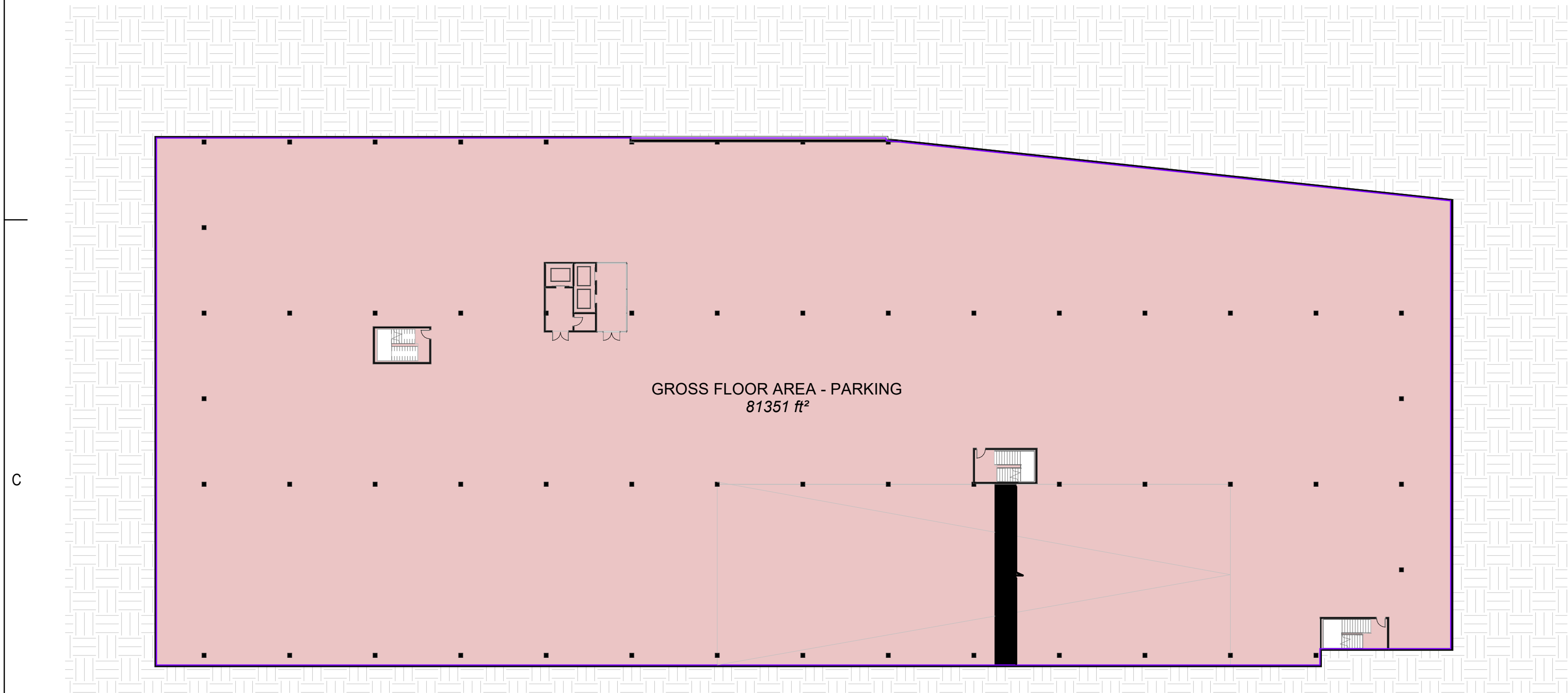
Kinnikinnick
Arctostaphylos uva-ursi
1'x6' Broadleaf evergreen, creeping

Floor Plans

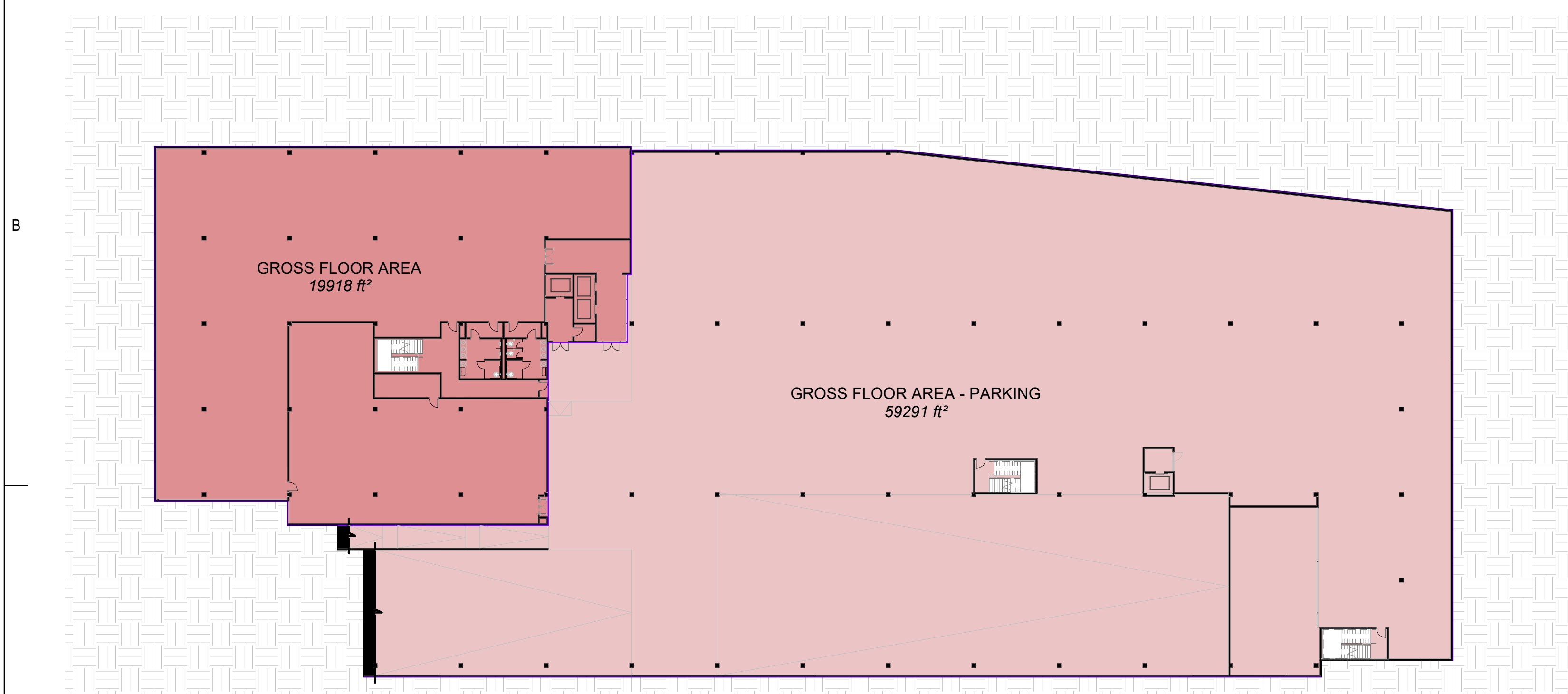




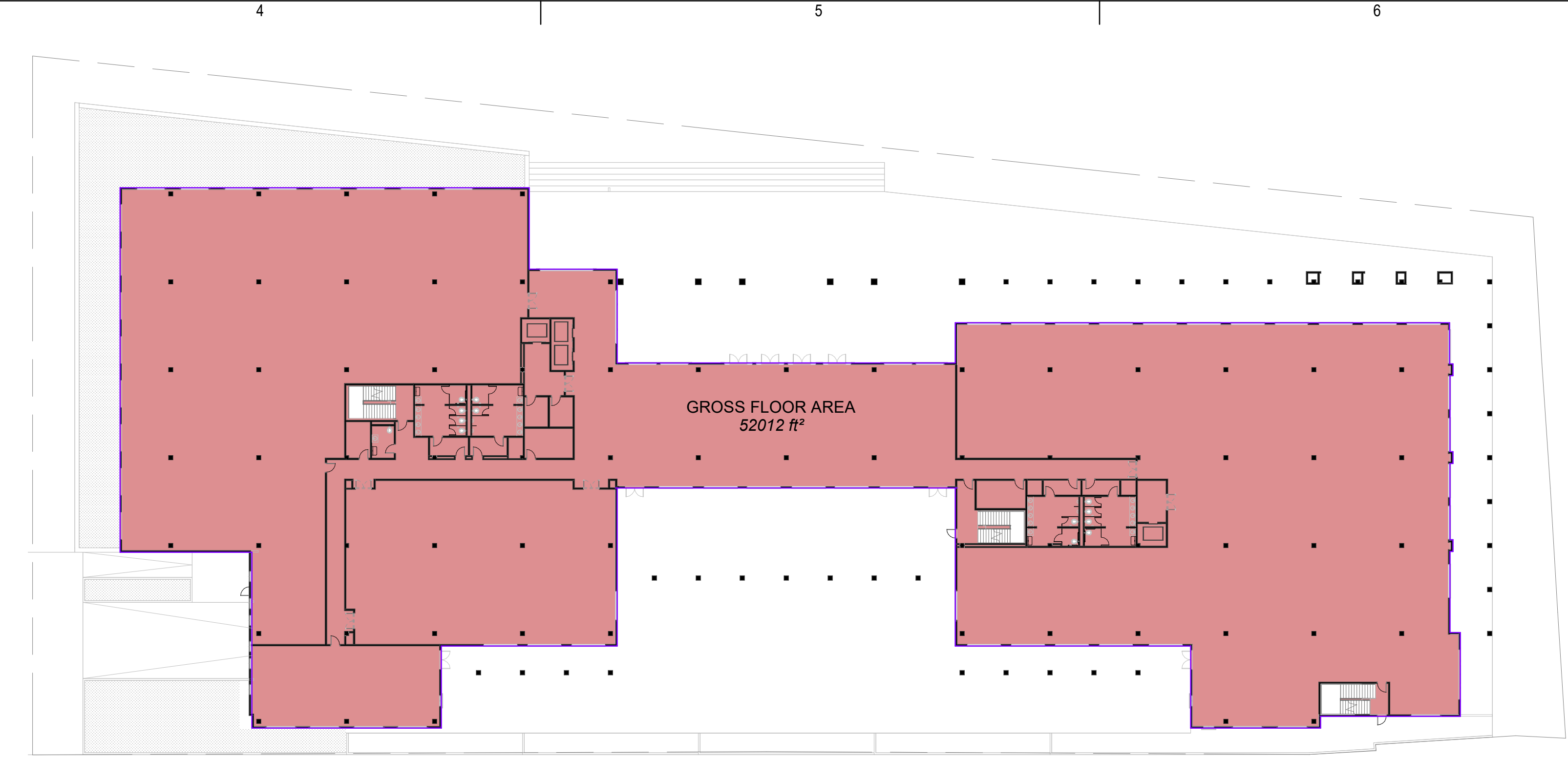
1 GROSS AREA PLAN - LOWER LEVEL 03
S 1/32" = 1'-0"



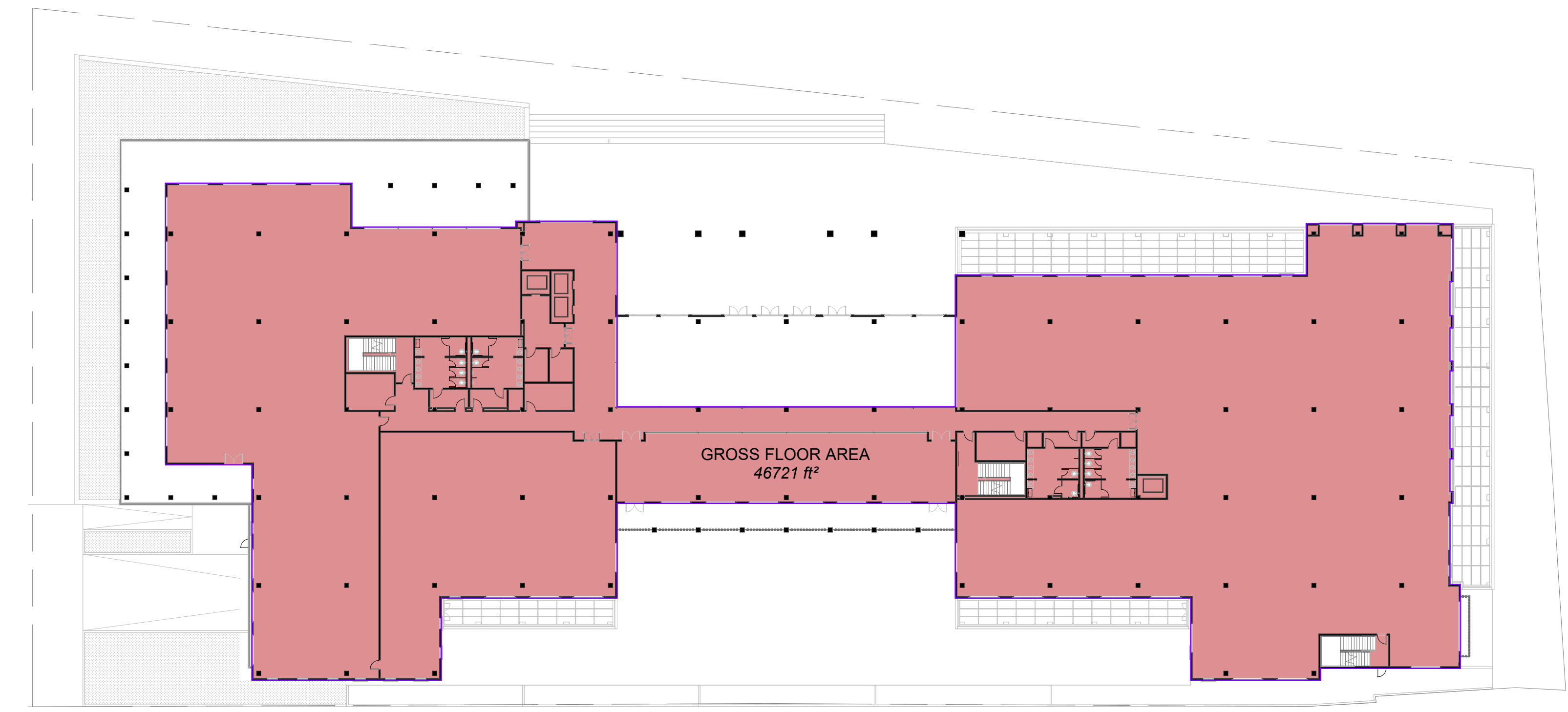
2 GROSS AREA PLAN - LOWER LEVEL 02
S 1/32" = 1'-0"



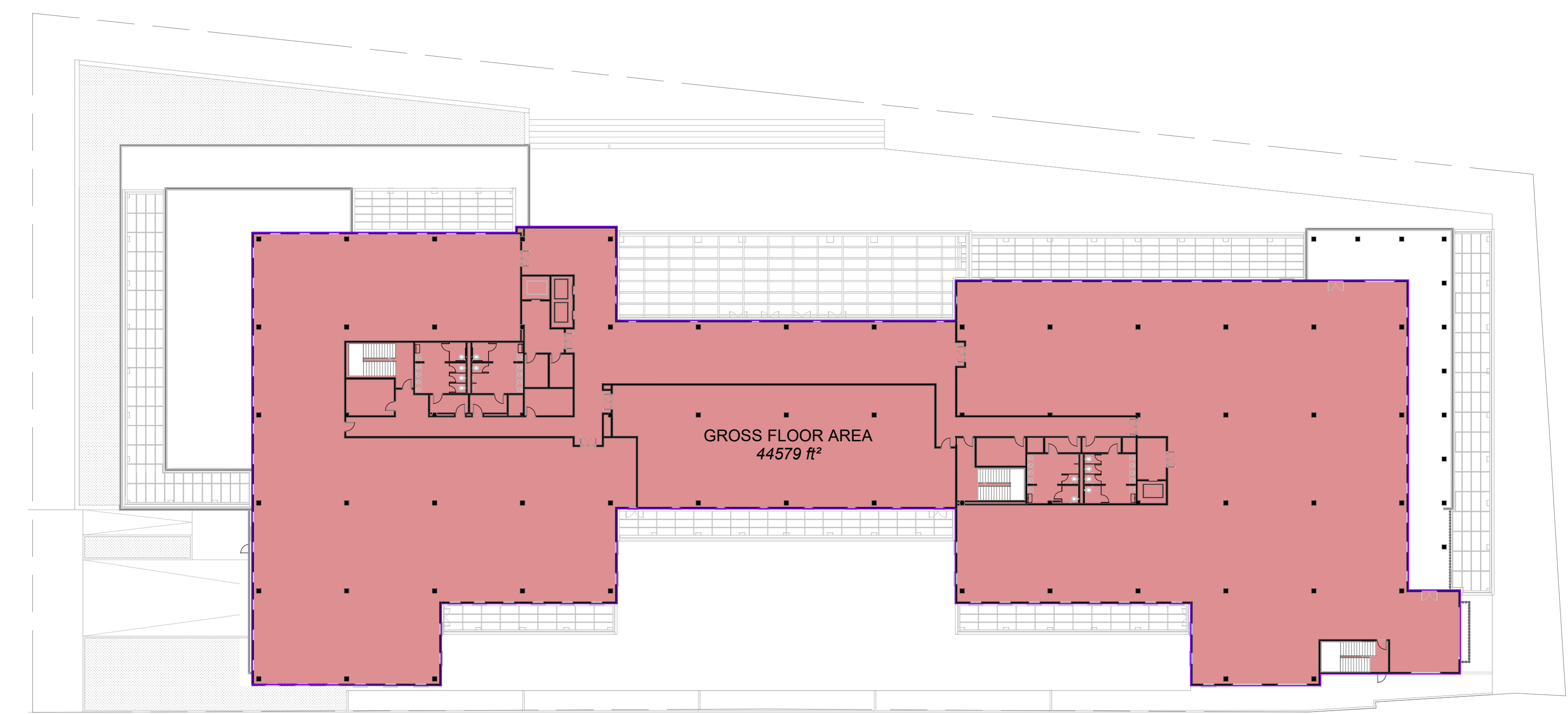
3 GROSS AREA PLAN - LOWER LEVEL 01
S 1/32" = 1'-0"



4 GROSS AREA PLAN - GROUND LEVEL
S 1/32" = 1'-0"

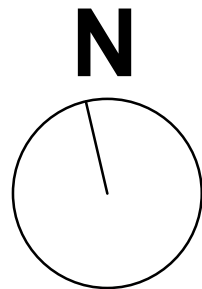


5 GROSS AREA PLAN - SECOND LEVEL
S 1/32" = 1'-0"



06_FP GROSS AREA PLAN - THIRD LEVEL
S 1/32" = 1'-0"

USE / LEVEL	GROSS FLOOR AREA (SF)
PARKING	
Lower Level 1	59,291
Lower Level 2	81,351
Lower Level 3	58,356
	198,998
PROGRAM	
Lower Level 1	19,918
Ground Floor	52,012
Second Floor	46,721
Third Floor	44,579
	163,230
GRAND TOTAL	362,228



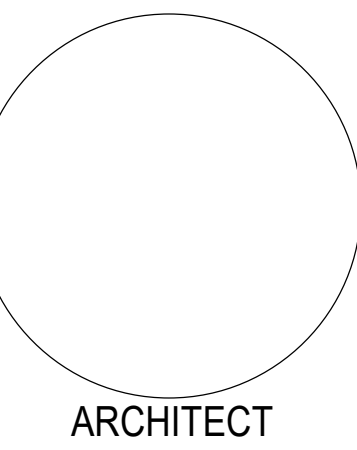
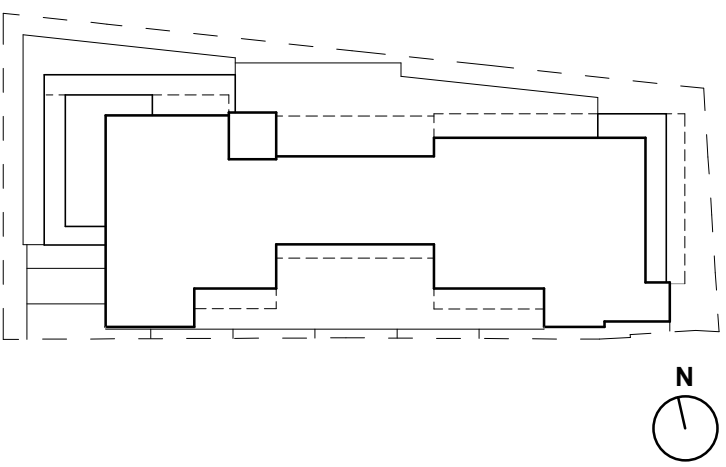
CONSULTANTS



10375 Park Meadows Dr, Suite 425
Lone Tree, CO 80124
P_303.694.6622 WEB: www.walkerconsultants.com



Chavez-Crisol
consulting engineers, inc.
A State of New Mexico Company
4700 Lincoln Road NE,
Albuquerque, NM 87109
P_505.344.4080



STATE OF NEW MEXICO

EXECUTIVE OFFICE
BUILDING

PRELIMINARY - NOT FOR
CONSTRUCTION

130 S CAPITOL PL
SANTA FE NM, 87501

November 2025

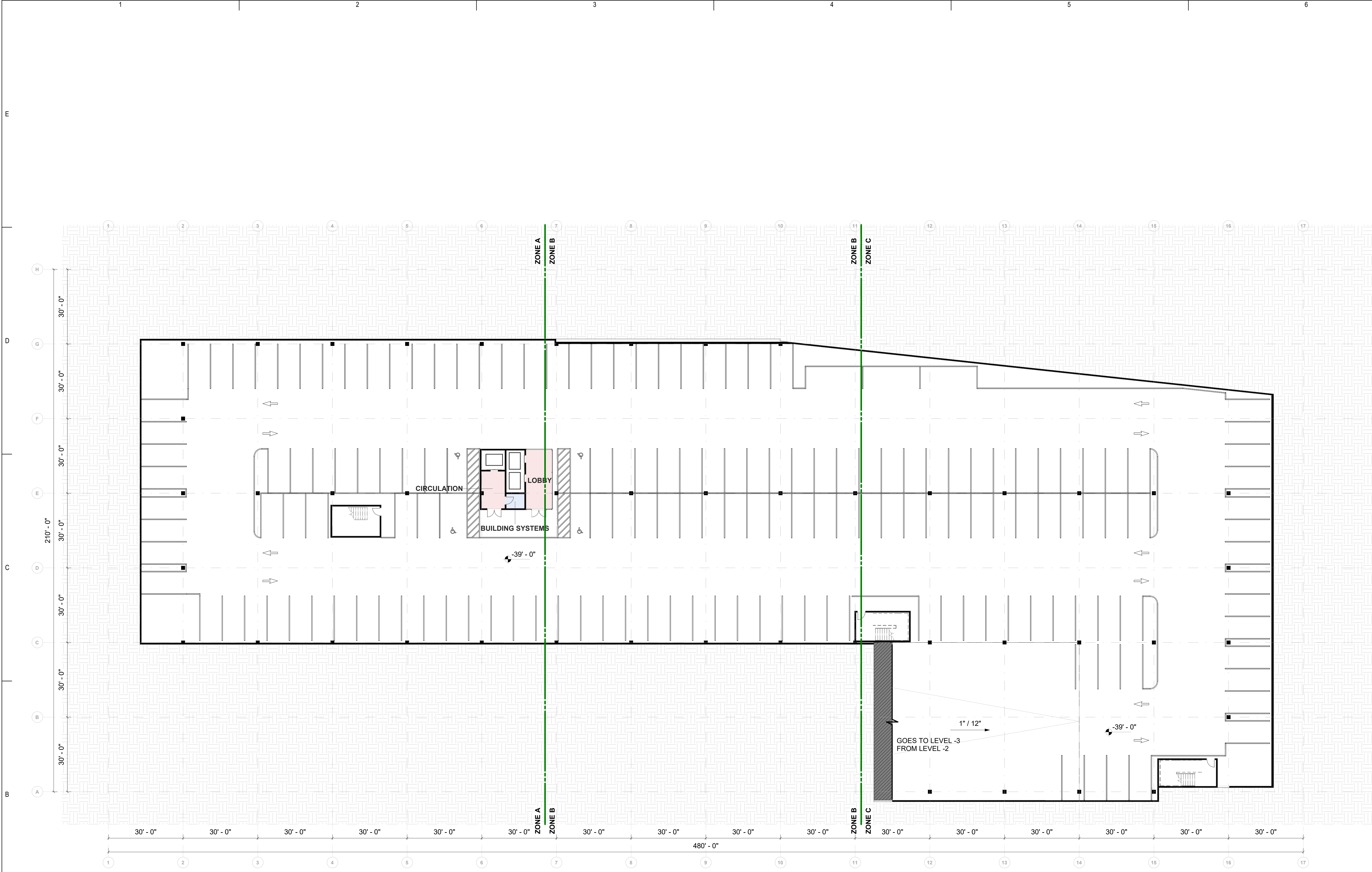
MARK DATE DESCRIPTION

ISSUE:
DATE: November 2025
PROJECT NO:
DRAWN BY: Author
CHECKED BY: Checker

SHEET TITLE

GROSS BUILDING AREA PLANS

A05.01



1 FLOOR PLAN - LOWER LEVEL 03
S 1/16" = 1'-0"

PARKING COUNT (9'-0" x 18'-0" STALLS)							
LEVEL	STANDARD	ACCESSIBLE CAR	ACCESSIBLE VAN	ELECTRIC VEHICLE (EV)	ACCESSIBLE CAR EV	ACCESSIBLE VAN EV	TOTAL
LEVEL -03	167	3	1	0	0	0	171
LEVEL -02	228	10	2	0	0	0	240
LEVEL -01	105	0	0	27	1	1	134
	500	13	3	27	1	1	545

CONSULTANTS

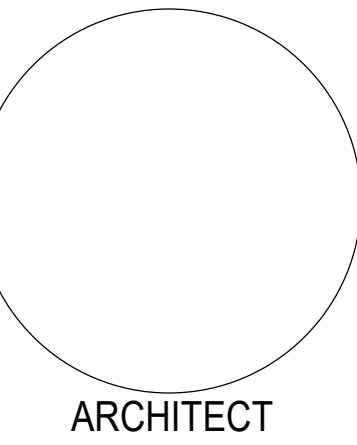
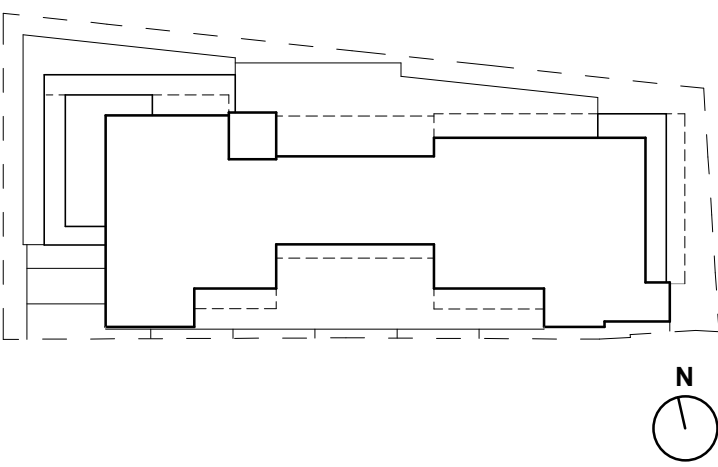


10375 Park Meadows Dr, Suite 425
Lone Tree, CO 80124
P_303.694.6622 WEB: www.walkerconsultants.com



Chavez-Gilman
consulting engineers, inc.
A State of New Mexico Company

4700 Lincoln Road NE,
Albuquerque, NM 87109
P_505.344.4080



STATE OF NEW MEXICO

EXECUTIVE OFFICE
BUILDING

PRELIMINARY - NOT FOR
CONSTRUCTION

130 S CAPITOL PL
SANTA FE NM, 87501

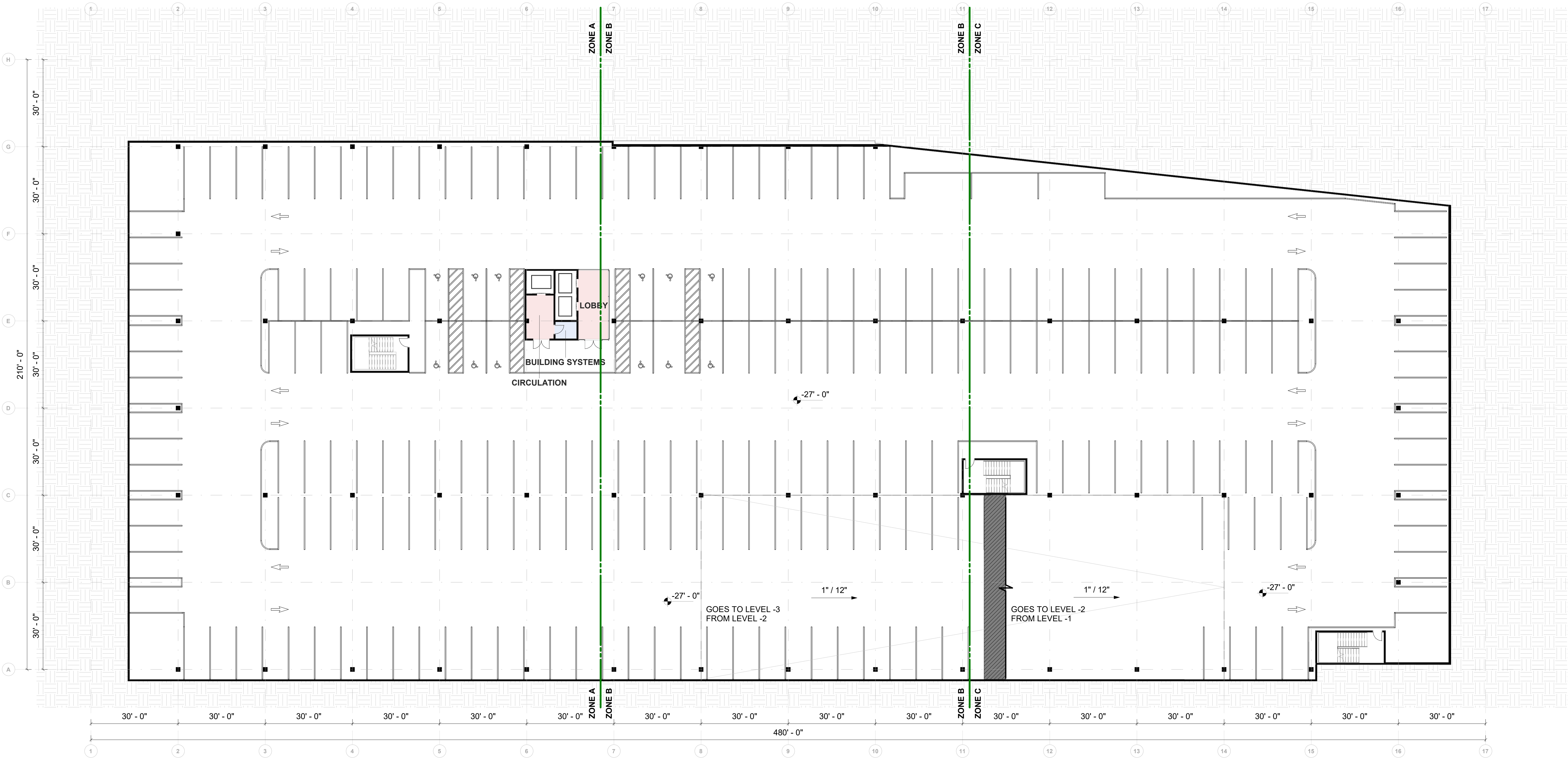
November 2025

MARK	DATE	DESCRIPTION
------	------	-------------

ISSUE:
DATE: November 2025
PROJECT NO:
DRAWN BY: Author
CHECKED BY: Checker

SHEET TITLE
LOWER LEVEL 03 - OVERALL PLAN

A02.01



1 FLOOR PLAN - LOWER LEVEL 02
S 1/16" = 1'-0"

fbt architects

500 Marquette Ave NW, Ste. 1500
Albuquerque, NM 87102
P_505.883.5200 WEB: www.fbtarch.com

luis vidal + architects

125 E John W. Carpenter Fwy. WEB: www.luisvidal.com
Ste. 190 P_305.479.2455
Irving, TX 75062

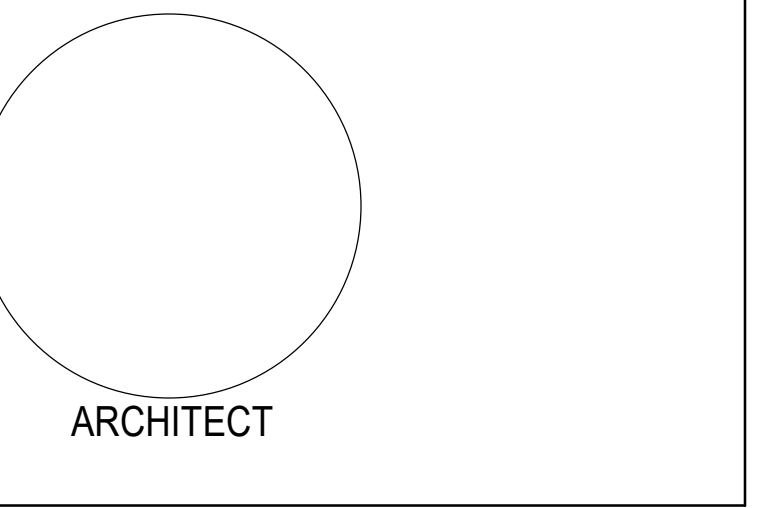
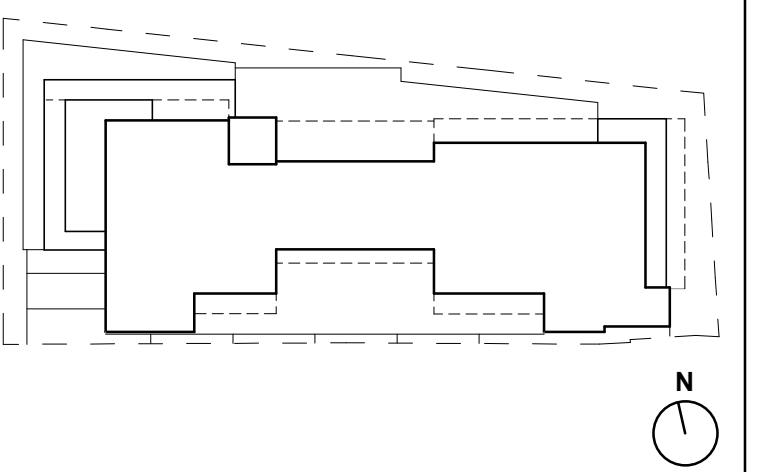
CONSULTANTS



10375 Park Meadows Dr, Suite 425
Lone Tree, CO 80124
P_303.694.6622 WEB: www.walkerconsultants.com



4700 Lincoln Road NE,
Albuquerque, NM 87109
P_505.344.4080



STATE OF NEW MEXICO

EXECUTIVE OFFICE
BUILDING

PRELIMINARY - NOT FOR
CONSTRUCTION

130 S CAPITOL PL
SANTA FE NM, 87501

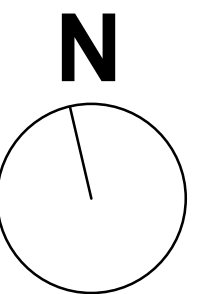
November 2025

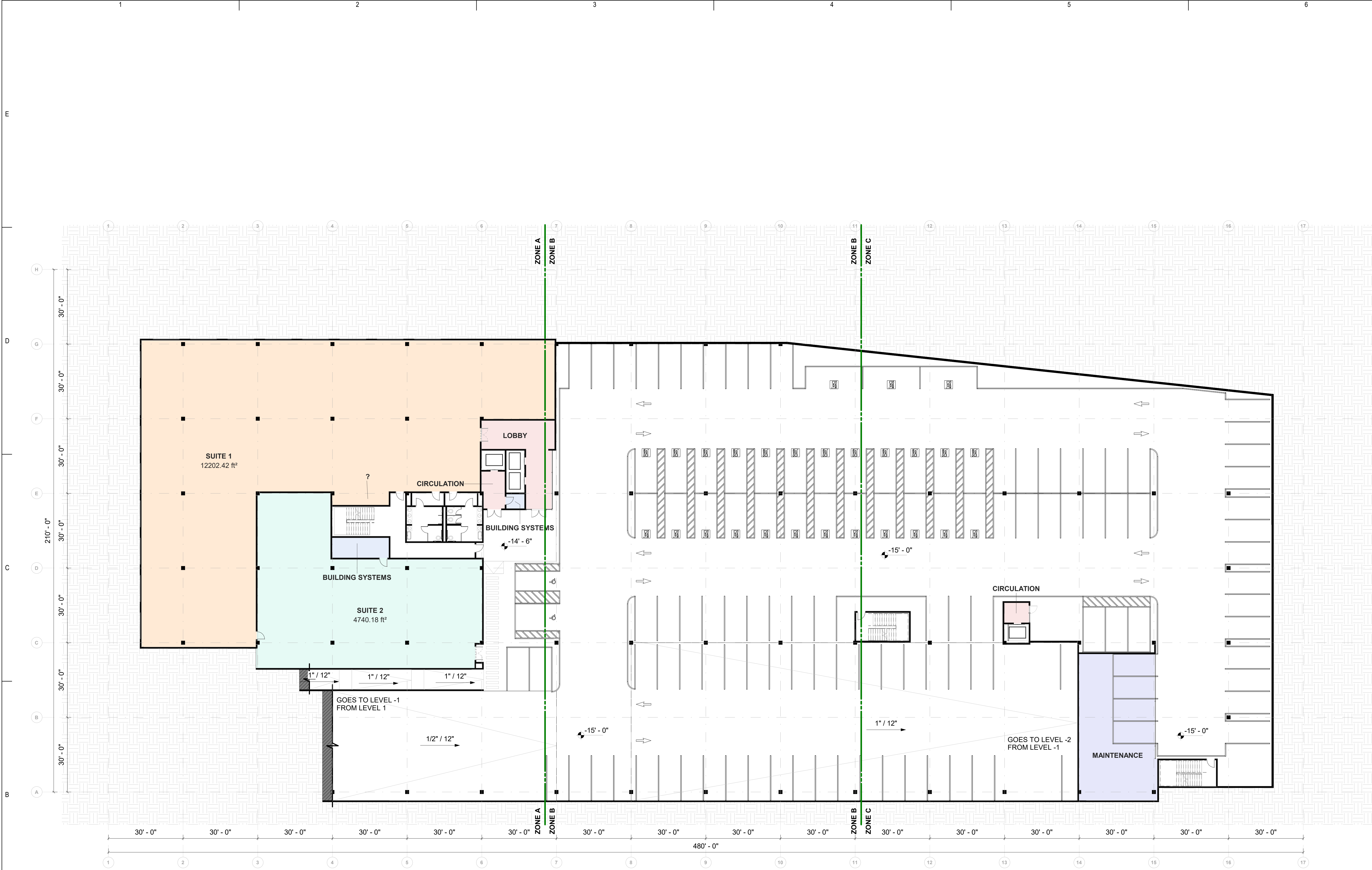
MARK	DATE	DESCRIPTION

ISSUE:	
DATE:	November 2025
PROJECT NO:	
DRAWN BY:	Author
CHECKED BY:	Checker

SHEET TITLE
LOWER LEVEL 02 - OVERALL PLAN

A02.02





1 FLOOR PLAN - LOWER LEVEL 01
S 1/16" = 1'-0"

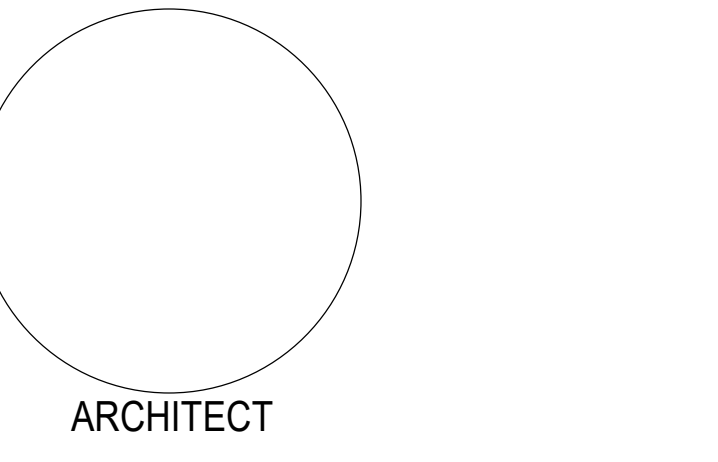
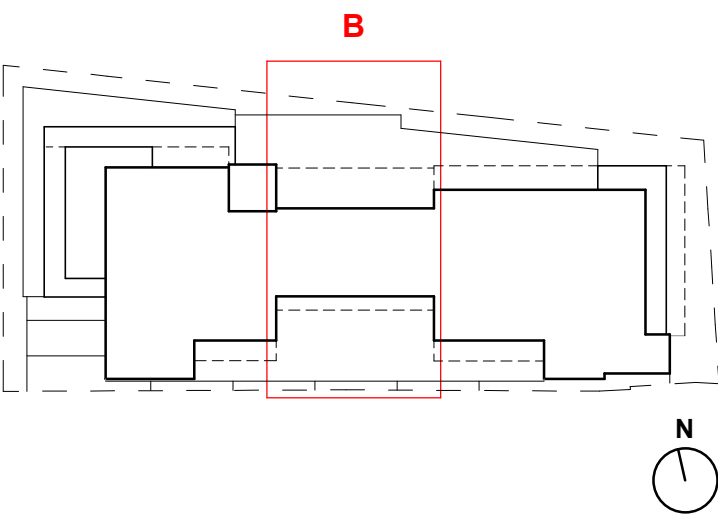
CONSULTANTS



10375 Park Meadows Dr, Suite 425
Lone Tree, CO 80124
P_303.694.6622 WEB: www.walkerconsultants.com



Chavez-Cruz
CONSULTING ENGINEERS, INC.
A State of New Mexico Company
4700 Lincoln Road NE,
Albuquerque, NM 87109
P_505.344.4080



STATE OF NEW MEXICO
**EXECUTIVE OFFICE
BUILDING**

**PRELIMINARY - NOT FOR
CONSTRUCTION**

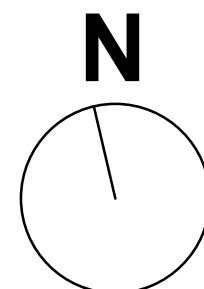
130 S CAPITOL PL
SANTA FE NM, 87501

November 2025

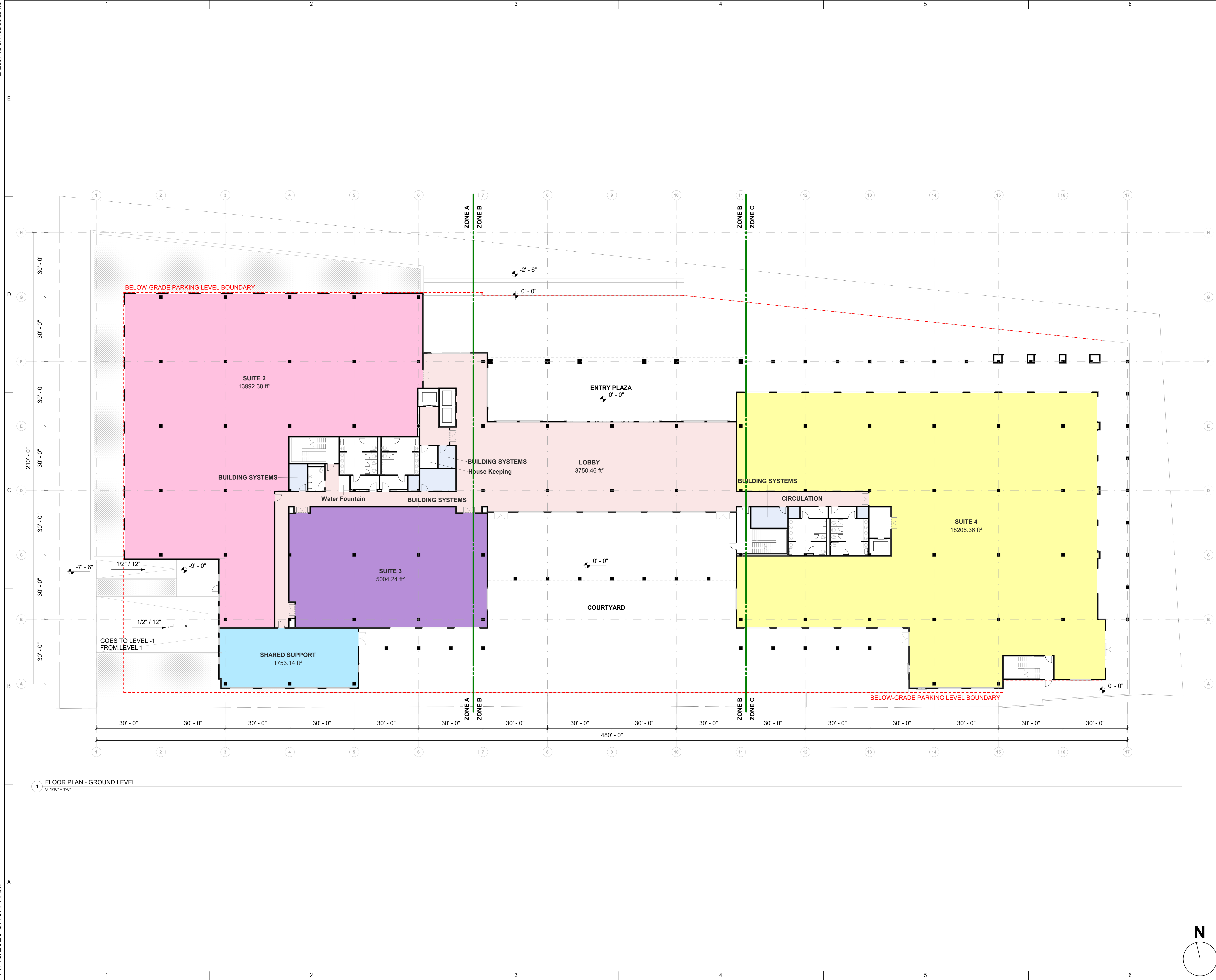
MARK	DATE	DESCRIPTION

ISSUE:	
DATE:	November 2025
PROJECT NO:	
DRAWN BY:	Author
CHECKED BY:	Checker

SHEET TITLE
LOWER LEVEL 01 - OVERALL PLAN



11/10/2025 9:45:14 AM



1 FLOOR PLAN - GROUND LEVEL
S 1/16" = 1'-0"

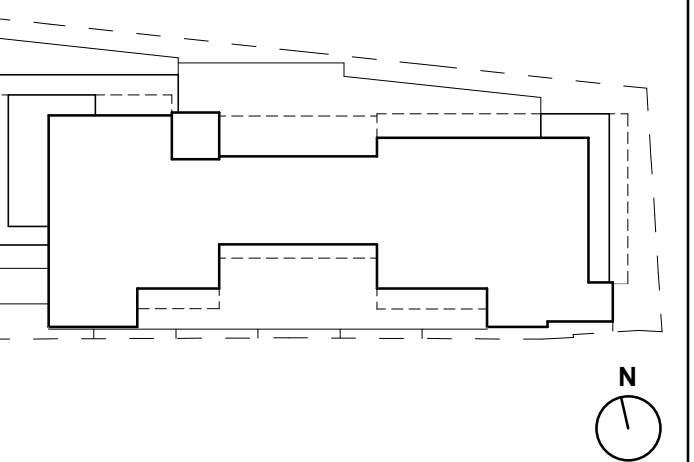
fbt architects
500 Marquette Ave NW, Ste. 1500
Albuquerque, NM 87102
P_505.883.5200 WEB: www.fbtarch.com

luis vidal + architects
125 E John W. Carpenter Fwy. WEB: www.luisvidal.com
Ste. 190 P_305.479.2455
Irving, TX 75062

CONSULTANTS

WALKER
CONSULTANTS
10375 Park Meadows Dr, Suite 425
Lone Tree, CO 80124
P_303.694.6622 WEB: www.walkerconsultants.com

CG
Chavez-Gilman
CONSULTING ENGINEERS, LLC
A State of New Mexico Company
4700 Lincoln Road NE,
Albuquerque, NM 87109
P_505.344.4080



STATE OF NEW MEXICO

EXECUTIVE OFFICE BUILDING

PRELIMINARY - NOT FOR CONSTRUCTION

130 S CAPITOL PL
SANTA FE NM, 87501

November 2025

MARK	DATE	DESCRIPTION

ISSUE:	
DATE:	November 2025
PROJECT NO:	
DRAWN BY:	Author
CHECKED BY:	Checker

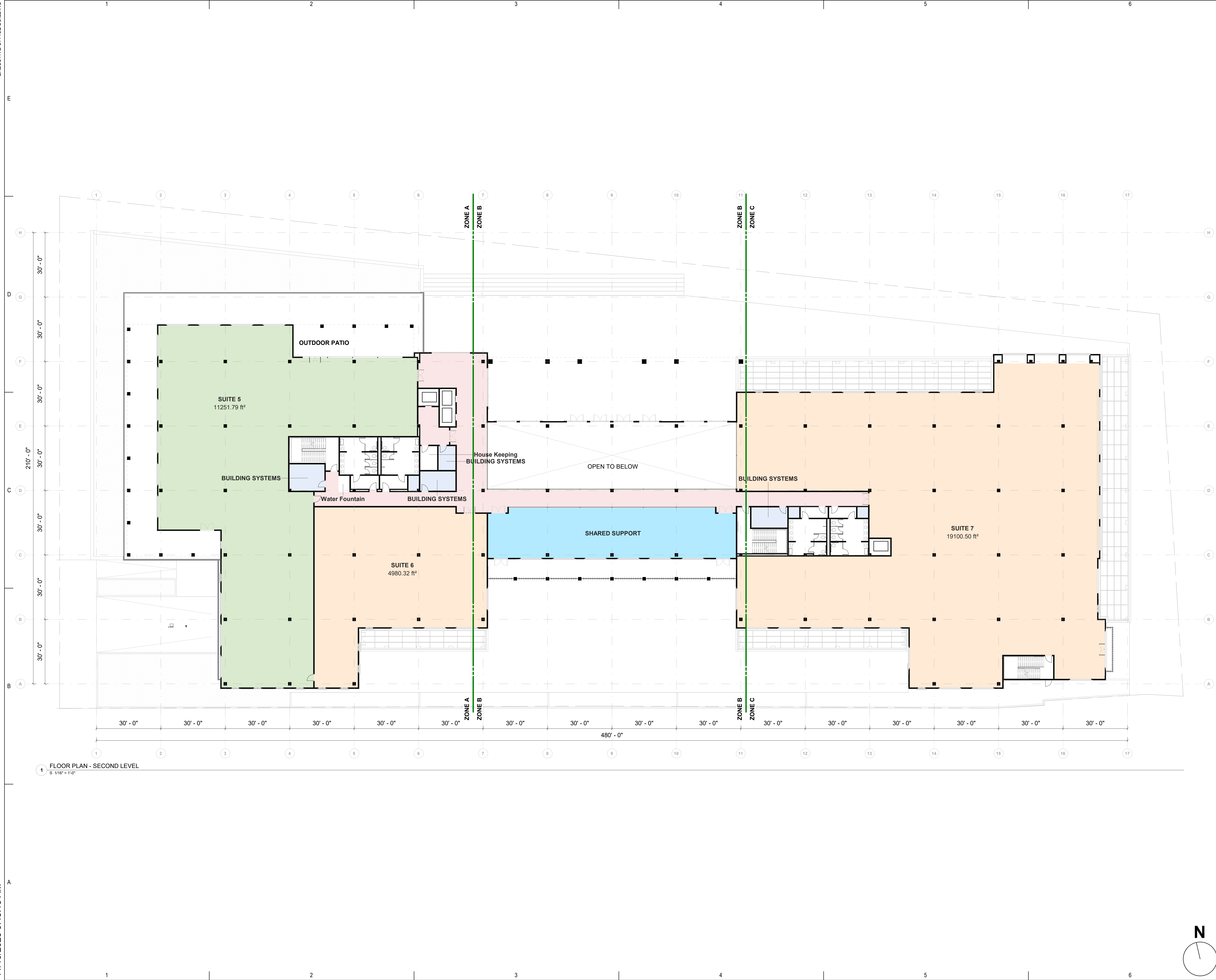
SHEET TITLE

GROUND LEVEL - OVERALL PLAN

A02.04

EXECUTIVE OFFICE BUILDING

11/10/2025 9:45:15 AM



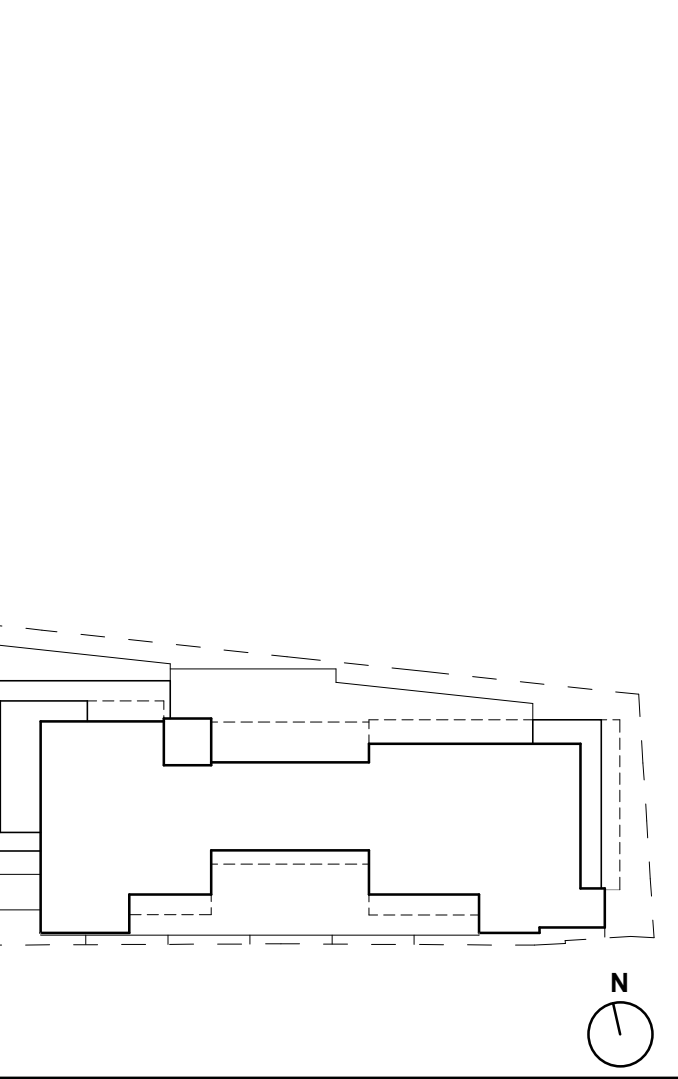
fbt architects
500 Marquette Ave NW, Ste. 1500
Albuquerque, NM 87102
P_505.883.5200 WEB: www.fbtarch.com

luis vidal + architects
125 E John W. Carpenter Fwy. WEB: www.luisvidal.com
Ste. 190 P_305.479.2455
Irving, TX 75062

CONSULTANTS

WALKER
CONSULTANTS
10375 Park Meadows Dr, Suite 425
Lone Tree, CO 80124
P_303.694.6622 WEB: www.walkerconsultants.com

CG
Chavez-Gilman
CONSULTING ENGINEERS, LLC
A State of New Mexico Company
4700 Lincoln Road NE,
Albuquerque, NM 87109
P_505.344.4080



ARCHITECT

STATE OF NEW MEXICO

**EXECUTIVE OFFICE
BUILDING**

**PRELIMINARY - NOT FOR
CONSTRUCTION**

130 S CAPITOL PL
SANTA FE NM, 87501

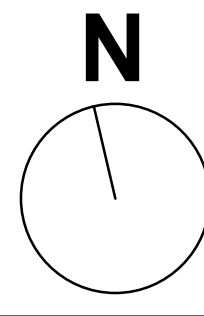
November 2025

MARK	DATE	DESCRIPTION

ISSUE:
DATE: November 2025
PROJECT NO:
DRAWN BY: Author
CHECKED BY: Checker

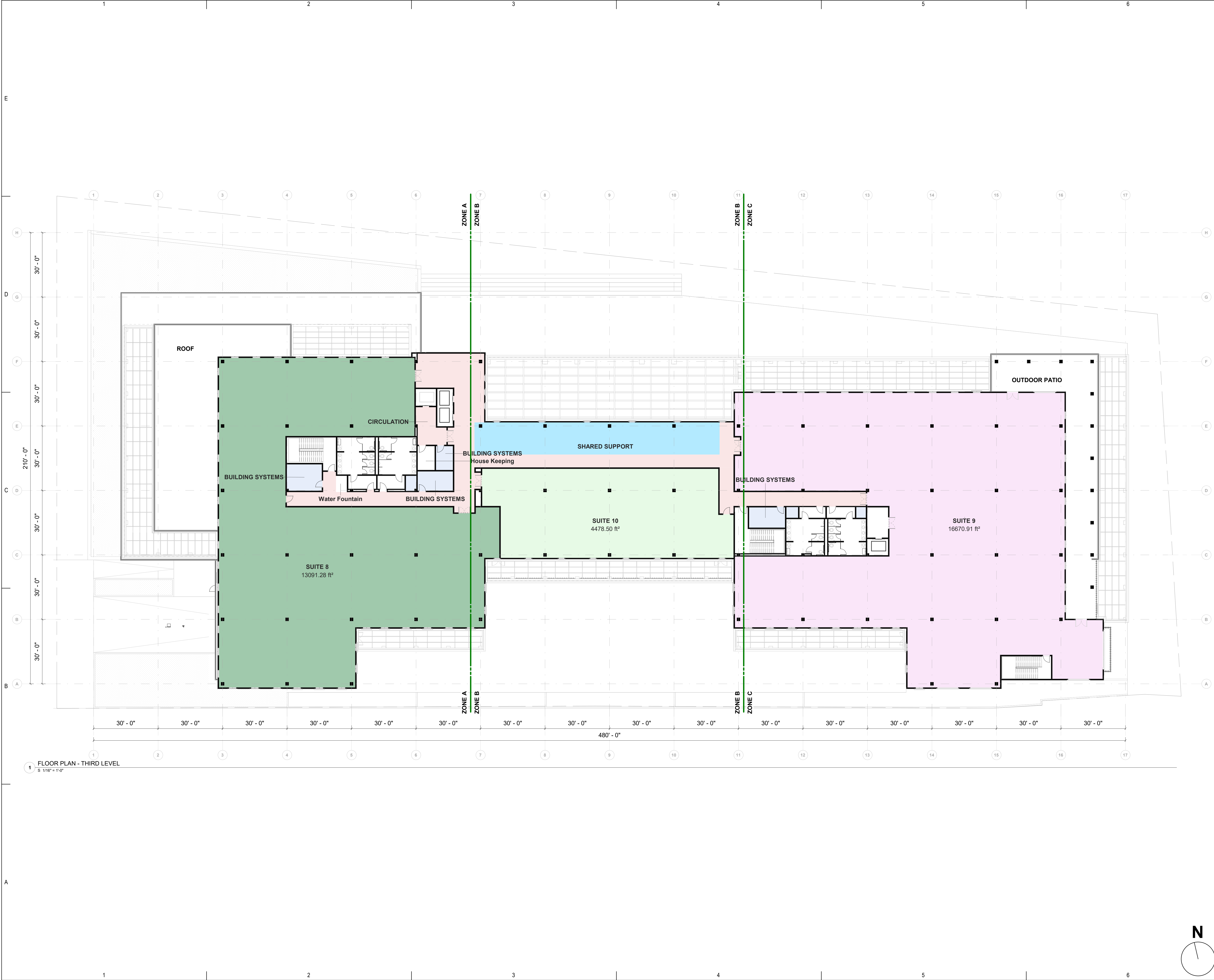
SHEET TITLE
SECOND LEVEL - OVERALL PLAN

A02.05



EXECUTIVE OFFICE BUILDING

11/10/2025 9:45:17 AM



1 FLOOR PLAN - THIRD LEVEL
S 1/16" = 1'-0"

fbt|architects

500 Marquette Ave NW, Ste. 1500
Albuquerque, NM 87102
P_505.883.5200 WEB: www.fbtarch.com

luis vidal + architects

125 E John W. Carpenter Fwy. WEB: www.luisvidal.com
Ste. 190 P_305.479.2455
Irving, TX 75062

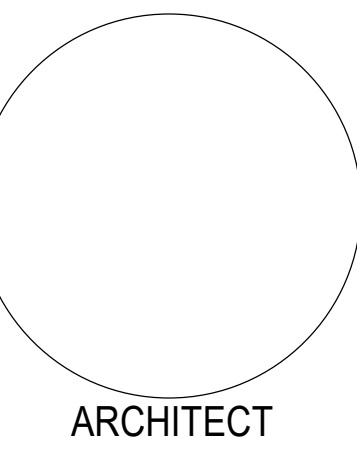
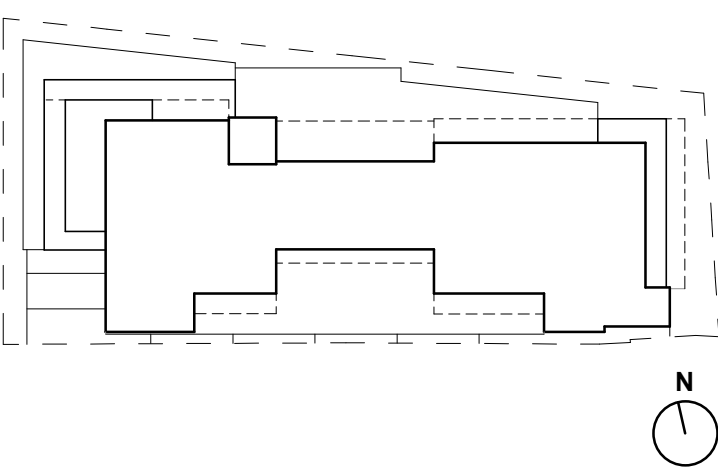
CONSULTANTS



10375 Park Meadows Dr, Suite 425
Lone Tree, CO 80124
P_303.694.6622 WEB: www.walkerconsultants.com



Chavez-Crispin
consulting engineers, inc.
A State of New Mexico Company
4700 Lincoln Road NE,
Albuquerque, NM 87109
P_505.344.4080



STATE OF NEW MEXICO

EXECUTIVE OFFICE
BUILDING

PRELIMINARY - NOT FOR
CONSTRUCTION

130 S CAPITOL PL
SANTA FE NM, 87501

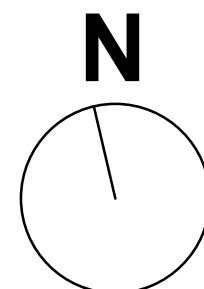
November 2025

MARK	DATE	DESCRIPTION

ISSUE:	
DATE:	November 2025
PROJECT NO:	
DRAWN BY:	Author
CHECKED BY:	Checker

SHEET TITLE
THIRD LEVEL - OVERALL PLAN

A02.06



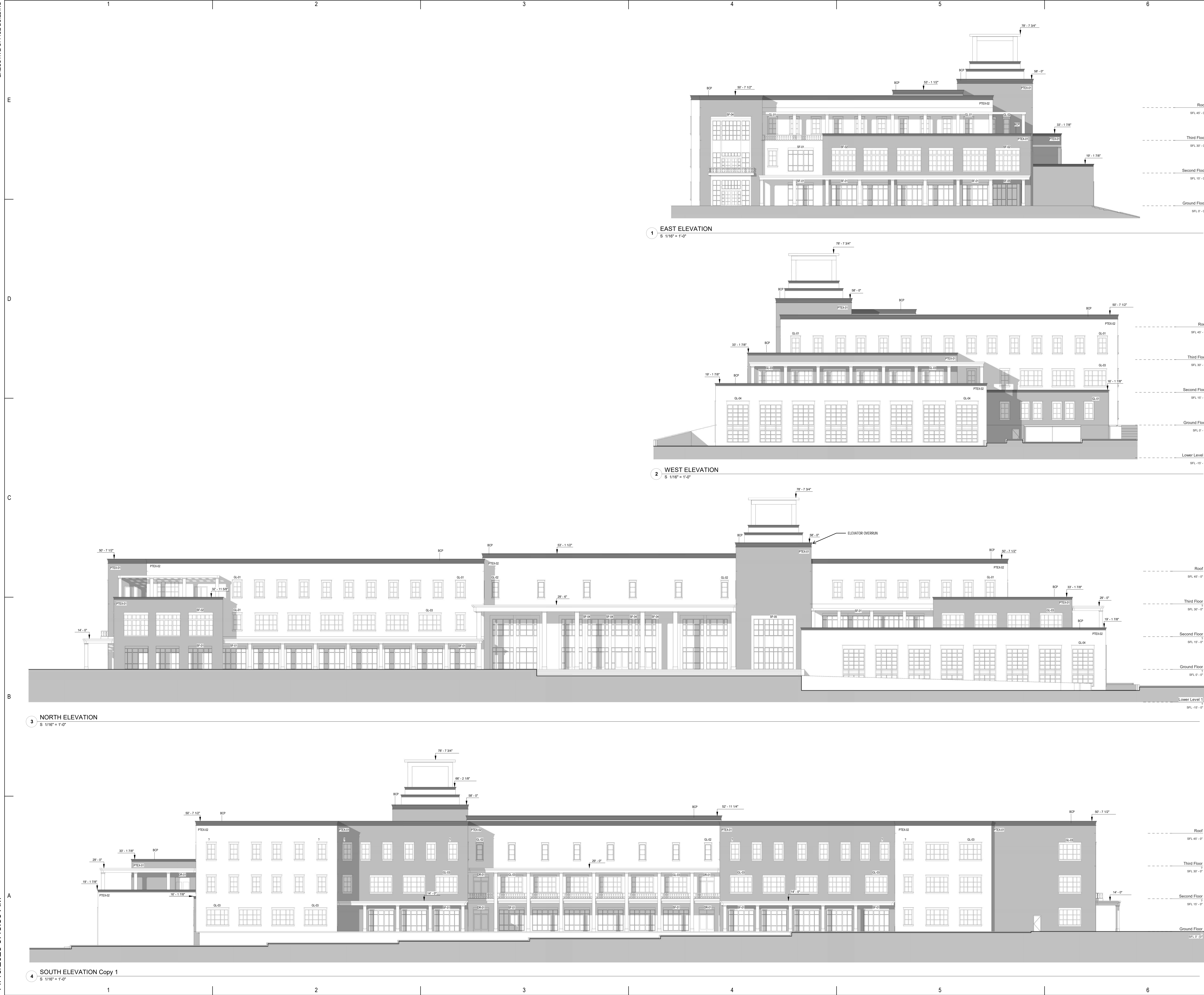
EXECUTIVE OFFICE BUILDING

Elevations



11/10/2025 9:48:50 AM

EXECUTIVE OFFICE BUILDING



fbt architects
500 Marquette Ave NW, Ste. 1500
Albuquerque, NM 87102
P_505.883.5200 WEB: www.fbtarch.com

luis vidal + architects
125 E John W. Carpenter Fwy. WEB: www.luisvidal.com
Ste. 190 P_305.479.2455
Irving, TX 75062

CONSULTANTS

WALKER CONSULTANTS
10375 Park Meadows Dr, Suite 425
Lone Tree, CO 80124
P_303.694.6622 WEB: www.walkerconsultants.com

CG
Chavez-Gilman
consulting engineers, inc.
A SISKIYOU GROUP COMPANY
4700 Lincoln Road NE,
Albuquerque, NM 87109
P_505.344.4080

ARCHITECT

ARCHITECT

STATE OF NEW MEXICO

EXECUTIVE OFFICE BUILDING

PRELIMINARY - NOT FOR CONSTRUCTION

130 S CAPITOL PL
SANTA FE NM, 87501

November 2025

MARK	DATE	DESCRIPTION

ISSUE:
DATE: November 2025
PROJECT NO:
DRAWN BY: Author
CHECKED BY: Checker

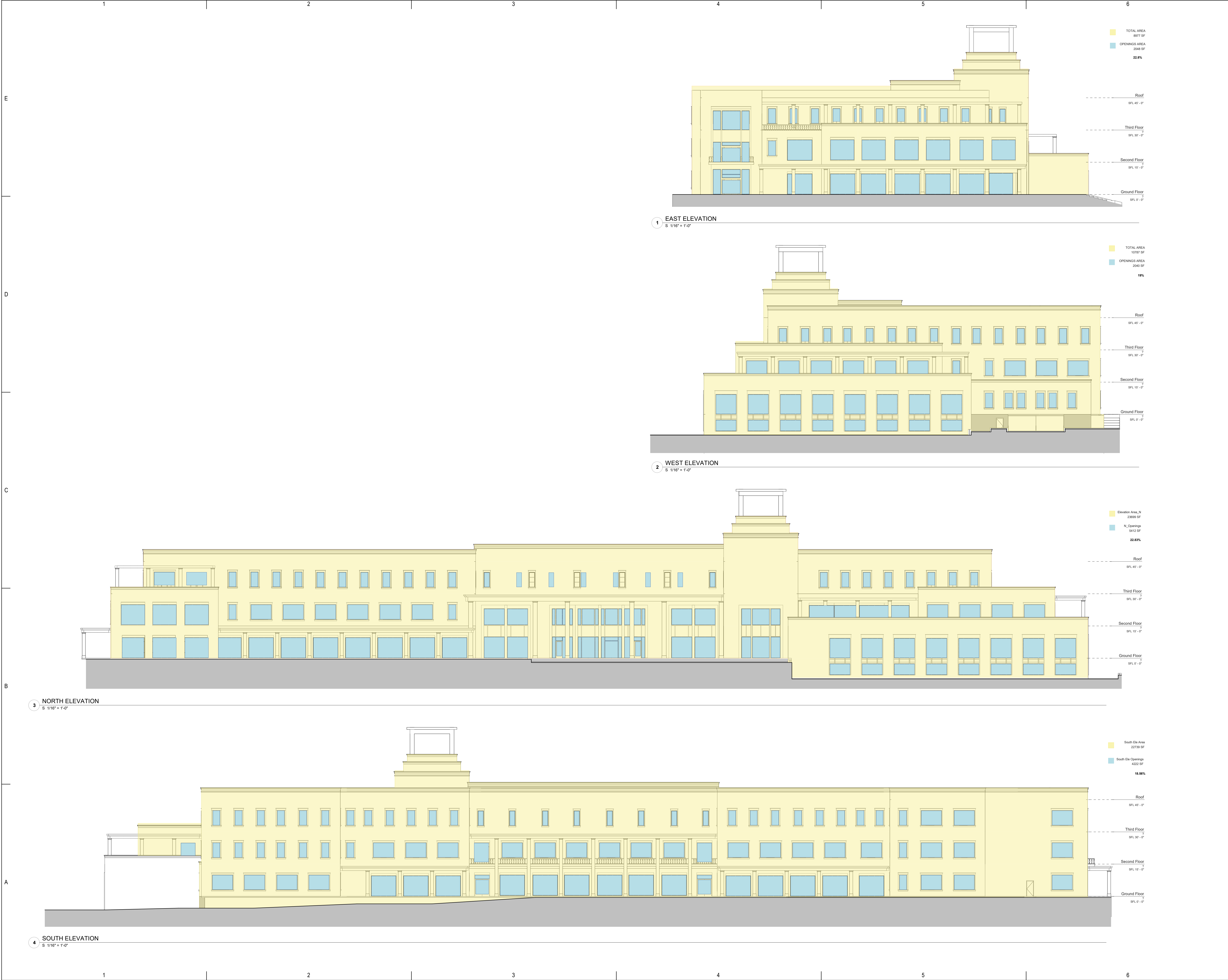
SHEET TITLE
OVERALL EXTERIOR ELEVATIONS

A04.01

EXECUTIVE OFFICE BUILDING

11/10/2025 9:48:54 AM

EXECUTIVE OFFICE BUILDING




fbt architects

500 Marquette Ave NW, Ste. 1500
Albuquerque, NM 87102
P_505.883.5200 WEB: www.fbtarch.com


luis vidal + architects

125 E John W. Carpenter Fwy. WEB: www.luisvidal.com
Ste. 190 P_305.479.2455
Irving, TX 75062

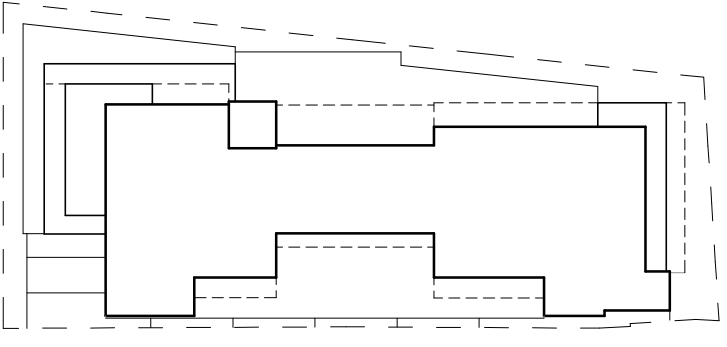
CONSULTANTS

**WALKER**
CONSULTANTS

10375 Park Meadows Dr, Suite 425
Lone Tree, CO 80124
P_303.694.6622 WEB: www.walkerconsultants.com

**CG**
Chavez-Gilman
CONSULTING ENGINEERS, INC.
A SPANISH SPEAKING COMPANY

4700 Lincoln Road NE,
Albuquerque, NM 87109
P_505.344.4080



N

ARCHITECT

STATE OF NEW MEXICO

EXECUTIVE OFFICE BUILDING

PRELIMINARY - NOT FOR CONSTRUCTION

130 S CAPITOL PL
SANTA FE NM, 87501

November 2025

MARK	DATE	DESCRIPTION

ISSUE:

DATE: November 2025

PROJECT NO:

DRAWN BY: Author

CHECKED BY: Checker

SHEET TITLE

OVERALL FACADE OPENINGS
PORCENTAGE

A04.02

EXECUTIVE OFFICE BUILDING