

# PASA WEEK

compiled by Pamela Beach

ARTS. ENTERTAINMENT. CULTURE.

## FRIDAY 5/1

### Art Openings

#### art is gallery

419 Canyon Road, 505-629-2332; [artgallerysantafe.com](http://artgallerysantafe.com)  
*Surrounding Nature*, paintings by Judy Eckhart; through May; reception 4-6 p.m.

#### Dusk Gallery

129 W. San Francisco Street; [duskphotogallery.com](http://duskphotogallery.com)  
*Botanical*, photographic group show; reception 5-7 p.m.

#### Kouri + Corrao

3213 Calle Marie, 505-820-1888; [kouricorrao.com](http://kouricorrao.com)  
*Pressure Point*, work by ceramicist Grayson Fair; through June 13; reception 5-7 p.m.

#### Phil Space

1410 Second Street; [philspacesantafe.com](http://philspacesantafe.com)  
*EVOLUTION/REVOLUTION*, works on canvas and paper by Shelley Horton-Trippe; reception 5-8 p.m.

#### Santa Fe Art Auction

932 Railfan Road, 505-954-5858; [santafeartauction.com](http://santafeartauction.com)  
*Art of the West*, classic and contemporary works; reception 5-7 p.m.; live online auction.

#### Sorrel Sky Gallery

125 W. Palace Avenue, 505-501-6555; [sorrelsky.com](http://sorrelsky.com)  
Radiographic photographs by Nick Veasey; reception 5-8 p.m., artist talk 6 p.m.

#### Strata Gallery

125 Lincoln Avenue, Suite 111, 505-780-5403; [stratagallerysantafe.com](http://stratagallerysantafe.com)  
*In The Eyes*, Taylor Thomas paintings; through May 8; reception 5-8 p.m.

### Performances

#### Chat Noir Cabaret

Los Magueyes; [los-magueyes.square.site](http://los-magueyes.square.site)  
Pianist-vocalist Charles Tichenor; 6-9 p.m.  
Fridays and Saturdays; no cover.

#### Christina Gomez y Los Cuates

Cowgirl BBQ; [cowgirlsantafe.com](http://cowgirlsantafe.com)  
Americana/country band; 8 p.m.; no cover.

#### CYRANO

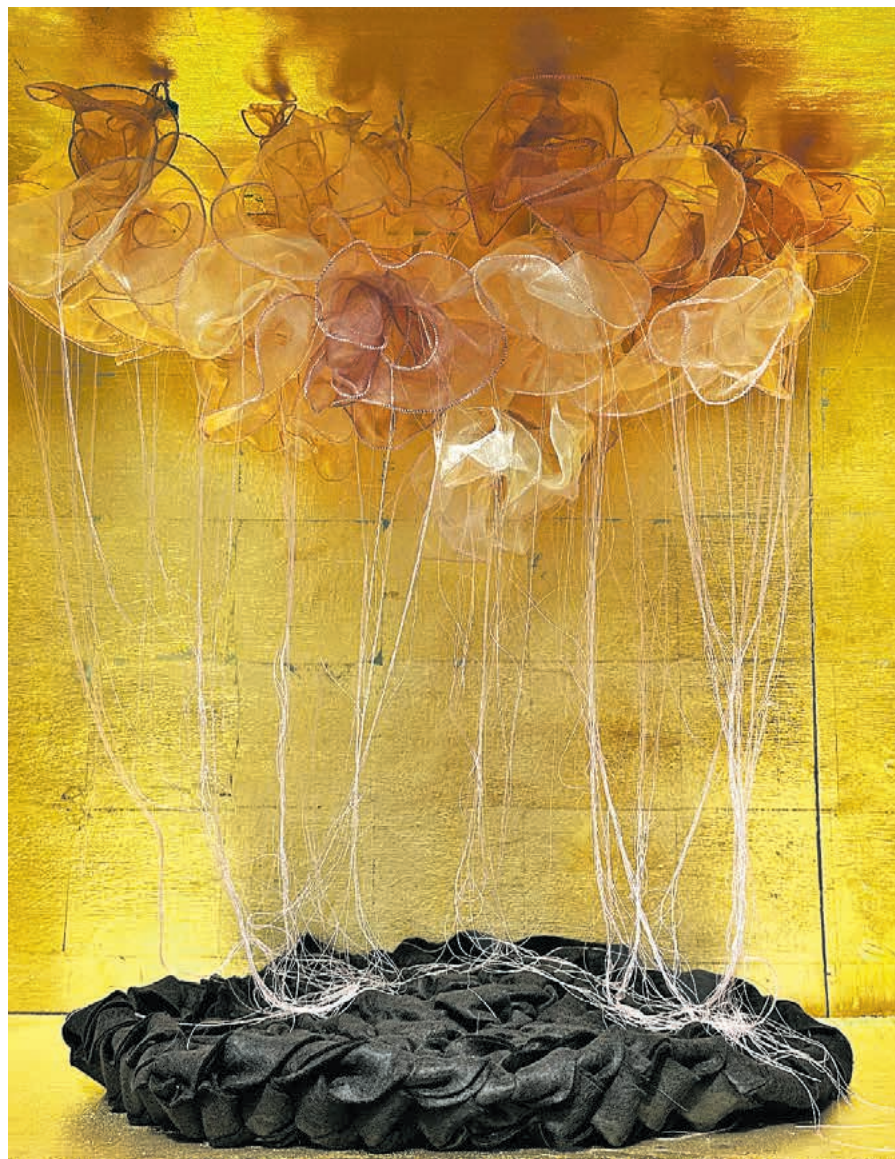
Aspect Garson Studios, 1030 Midtown Calle Central; [exodusensemble.com](http://exodusensemble.com)  
Exodus Ensemble's immersive reimagining of *Cyrano de Bergerac* as a high school rom-com set across senior year at Melrose High School and the 15-year reunion; 7-9:30 p.m. today, Saturday, and Thursday; by donation; registration required; encores through May.

#### Entreflamenco Company spring season

El Flamenco Spanish Cabaret; [entreflamenco.com](http://entreflamenco.com)  
Antonio Granjero and Estefania Ramirez; 7:30 p.m.  
Fridays and Saturdays through June 28; \$25+.

#### Eureka Day

The Lab Theater; [nmactorslab.com](http://nmactorslab.com)  
Jonathan Spector's comedic and satirical play about vaccine mandates (2025 Tony Award-winner for best revival of a play); 7:30 p.m. Thursdays-Saturdays, 2 p.m. Sundays through May 17; \$21.50-\$41.50.



Marianne Hall's *Between Heaven and Earth* installation is a personal meditation on the tension between joy and sorrow, loss and renewal. Hall's organza, thread, copper wire, felt, gold metal leaf, and acrylic paint creation is on view outside of Vldem Contemporary through June 28 as part of the museum's Window Box Project.

#### The Heavy Heavy

Tumbleroot Alegria; [lensic360.org](http://lensic360.org)  
Retro-rock band; 7:30 p.m.; \$30.

#### Man-Moth & The Gospel of Possibility

Teatro Paraguas; [teatroparaguasnm.org](http://teatroparaguasnm.org)  
Poems by Donald Levering, read by Levering and Joe West, with music by Gary Barten, within an art installation by Barbara Mehlman; 7:30 p.m. today and Saturday, 2 p.m. Sunday; \$20, \$15 limited income; 505-424-1601.

#### TGIF recital

First Presbyterian Church; [fpcsantafe.org](http://fpcsantafe.org)  
Cellists Janet Anthony and David Schepps; Haitian folk music and Baroque selections; 5:30 p.m., doors 5:15 p.m.; donations accepted.

#### Youth Shakespeare Festival Santa Fe 2026

Crow's Nest, Eldorado; [upstartcrowsofsantafe.org](http://upstartcrowsofsantafe.org)  
Swordplay, poetry, music, and other Shakespeare-related activities performed by Upstart Crows of Santa Fe; 6:30 p.m. today and Saturday, 2 p.m. Sunday; \$15.

## SATURDAY 5/2

### Art Openings

#### Cafe Pasqual's Gallery

103 E. Water Street, 505-983-9340; [pasquals.com](http://pasquals.com)  
*ENIGMAS*, paintings by Craig Anderson; reception 3-5 p.m.

#### Vital Spaces

3140 Cerrillos Road; [vitalspaces.org](http://vitalspaces.org)  
*Right On!*, work by intermedia artist Angie Eng; through May 30; panel discussion 3-4 p.m.; reception 4-7 p.m.

### Performances

#### Chatter North

Center for Contemporary Arts; [chatterabq.org](http://chatterabq.org)  
Violinists David Felberg and Elizabeth Young and violist Margot Schwartz perform music of J.S. Bach, Johannes Brahms, Scott Wollschleger, and Antonín Dvořák; 10:30 a.m.; \$5-\$17.

#### CYRANO

Aspect Garson Studios, 1030 Midtown Calle Central; [exodusensemble.com](http://exodusensemble.com)  
Exodus Ensemble's immersive performance reimagining *Cyrano de Bergerac* as a high school rom-com set across senior year and the 15-year reunion at Melrose High School; 7-9:30 p.m. today and Thursday; by donation; registration required; encores through May.

#### Dafnis Prieto Sí o Sí Quartet

Unit B; [santafemusiccollective.org](http://santafemusiccollective.org)  
Multi-award winning drummer/composer, with Martin Bejerano (piano), Peter Apfelbaum (woodwinds), and Ricky Rodríguez (electric bass); 7 p.m.; \$38.89-\$44.20.

#### Eureka Day

The Lab Theater; [nmactorslab.com](http://nmactorslab.com)  
Jonathan Spector's comedic and satirical play about vaccine mandates (2025 Tony Award-winner for best revival of a play); 7:30 p.m. Thursdays-Saturdays, 2 p.m. Sundays through May 17; \$21.50-\$41.50.

#### Indigenous Drag Story Hour

Beastly Books; [beastlybooks.com](http://beastlybooks.com)  
Free, kid friendly storytelling by the Diné drag performer Lady Shug honoring Two Spirit and Indigenous LGBTQ+ experiences; 2 p.m. Coloring materials provided. Registration required.

#### Kelly Willis

Paradiso; [amconcerts.org](http://amconcerts.org)  
Country music singer-songwriter; 7:30 p.m.; \$30.

#### The Met: Live in HD/Eugene Onegin

Lensic Performing Arts Center; [lensic.org](http://lensic.org)  
Soprano Asik Grigoiran as Tatiana with baritone Igor Golovatenko as Onegin in this adaptation of Pushkin's novel; 11 a.m.; \$29-\$35.

#### The Outlaw Express: A Wild West Train Adventure

Sky Railway Train; [exodusensemble.com](http://exodusensemble.com), [skyrailway.com](http://skyrailway.com)  
Exodus Ensembles' immersive theater experience; 1:30-4:30 p.m.; encores May, June, July, and August; \$154.

#### Songs of the Prison Gate

Teatro Paraguas; [teatroparaguasnm.org](http://teatroparaguasnm.org)  
Reading of South Carolina prison inmate Gary Farlow's 2025 PEN American Prison Writing Contest-winning play, with an ensemble of actors from Santa Fe, Española, and Albuquerque; 7:30 p.m. today, 2 p.m. Sunday; \$20 suggested donation.

### CALENDAR LISTING GUIDELINES

▶ Email press releases to [pambeach@sfnwmexican.com](mailto:pambeach@sfnwmexican.com) at least two weeks prior to the event date.

▶ Inclusion of free listings is dependent on space availability.

### Stanlie Kee & Step In

Cowgirl BBQ; [cowgirlssantafe.com](http://cowgirlssantafe.com)

Blues band, 1-3 p.m.; John Kurzweg Band, rock 'n' roll; 8 p.m.-close; no cover.

### Events

#### 15th annual Folk Art Flea

Santa Fe County Fairgrounds

Curated folk art pieces from collectors and artists; 10 a.m.-2 p.m.; benefitting the Museum of International Folk Art; free admission.

#### Eldorado Arts & Crafts Association Spring Show

Eldorado Community Center; [eldoradoarts.org](http://eldoradoarts.org)

Paintings, photographs, sculpture, and mixed media; 10 a.m.-4 p.m. today and Sunday.

#### Feria Southside Holiday Mercado

Fraternal Order of Police, 3300 Calle Maria Luisa; [feriasouthside.com](http://feriasouthside.com)

Shop in advance for Mother's Day; 11 a.m.-2 p.m.;

free admission.

#### National kickoff of the Route 66 Centennial

Willison West Art Space, 1189 Parkway Drive, #E4

With Darryl Willison, creator of the New Mexico

Route 66 Association's centennial logo; plus,

the release of a second edition of the association's

commemorative coin; 10 a.m.-6 p.m.

#### Spring Flea Market

Santa Fe Woman's Club; [sfwoman.org](http://sfwoman.org)

Furniture, art work, antiques, clothing,

jewelry, books, kitchen wares, and collectibles;

8 a.m.-3 p.m. today, 10 a.m.-3 p.m. Sunday.

#### Trash Can Writing workshop

Geronimo's Books

Get words down on the page with 5- to 10-minute

prompts led by Vicki Holmsten, first place winner

for adult nonfiction in the December 2025

*Pasatiempo* Writing Contest; 4 p.m.

### SUNDAY 5/3

#### Performances

##### CYRANO

Aspect Garson Studios, 1030 Midtown Calle Central;

[exodusensemble.com](http://exodusensemble.com)

Exodus Ensemble's immersive reimagining of

Cyrano de Bergerac as a high school rom-com

set across senior year at Melrose High School

and the 15-year reunion; 6-8:30 p.m.; by donation;

registration required.

##### Doug Montgomery

Rio Chama; [riochamasantafe.com](http://riochamasantafe.com)

Great American Songbook selections; 6-9 p.m.

Sundays and Mondays; no cover.

##### Dylan Earl

The Marigold Room; [hotelglorietasantafe.com](http://hotelglorietasantafe.com)

Outlaw-country songwriter; 8 p.m.; \$20.09.

##### Jordan Wax Yiddish sing-along

Collected Works Bookstore; [collectedworksbookstore.com](http://collectedworksbookstore.com)

Between Two Worlds: Exploring Jewish Culture

and Religion through Yiddish Literature, a free

co-presentation with the Santa Fe Public Library

and the multi-instrumentalist/singer; 4:30 p.m.

##### Novalima

The Bridge at Santa Fe Brewing; [lensic360.org](http://lensic360.org)

Peruvian electronica band fusing Afro-Peruvian

rhythms with dub, reggae, salsa, and global beat;

7 p.m.; \$20 advance, \$25 at the door.

##### Peter Pesic and Consuelo Sanudo

Junior Common Room at St. John's College

Pianist and soprano; music of Maurice Ravel and

Edgard Varèse; 3 p.m. Free and open to the public.

##### Pollo Frito

Cowgirl BBQ; [cowgirlssantafe.com](http://cowgirlssantafe.com)

New Orleans-style funk and soul, noon; no cover.



It's safe to say that drummer, composer, bandleader, and multiple Grammy-winner Dafnis Prieto is an overachiever in the best sense of the word. Prieto and his *Sí o Sí* Quartet bring their much lauded Latin-infused jazz sets to Albuquerque's Outpost Performance Space on Friday and to Unit B in Santa Fe on Saturday.

#### Rumelia Collective

Odd Fellows Hall; [ioofsfnm.org](http://ioofsfnm.org)

Balkan folk music quartet; 6:30-9 p.m.;

\$10 at the door, ages 11 and under no charge.

#### Sammy Brue

La Reina at El Rey Court; [elreycourt.com](http://elreycourt.com)

Americana prodigy performing in support

of *The Journals*, his new album; 8 p.m.; no cover.

(See story, Page 16)

#### Santa Fe Pro Musica Orchestra

Lensic Performing Arts Center; [sfpromusica.org](http://sfpromusica.org)

Violinist Colin Jacobsen and cellist Karen

Ouzounian; music of Beethoven, Anna Clyne,

Janáček, and Ouzounian; 3 p.m.; \$31.80-\$103.90.

(See story, page 20)

#### Events

##### 15th Annual Pueblo Fiber Arts Show

Buffalo Thunder Resort & Casino; [sarweb.org](http://sarweb.org)

Artists' demonstrations, traditional dances

featuring Pueblo textiles, a fashion show

highlighting Pueblo designers, and opportunities

to learn more about and purchase creations;

10 a.m.-4 p.m.

##### Flowering Poetry Club

Travel Bug; [mapsofnewmexico.com](http://mapsofnewmexico.com)

Sincerely, unsent-letters themed open-mic night;

4 p.m.; all poets welcome to participate.

##### Fred Harvey Company Indian Detours' 100th anniversary

Lumpkins Ballroom at La Fonda; [sfnm.co/indiandetours](http://sfnm.co/indiandetours)

Free illustrated presentation on the Southwest

excursions with speakers La Fonda historian

Ed Pulsifer, New Mexico History Museum

librarian Kathleen Dull, Harold Stacy, author

of *The Southwest Indian Detours - A Family*

*Heritage*, and Deborah Torres and Elmer Torres

of San Ildefonso Pueblo; 2-4 p.m.

Register online.

##### Plant Bingo

Sky Cinemas Midtown; [sfnm.co/1stplantbingo](http://sfnm.co/1stplantbingo)

A special edition of Kombucha Bingo,

with DJ sets, 12+ plants, and tamarindo

kombucha paired with classic movie theater

snacks; 5:30 p.m.; \$35.

##### Wheelwright Museum Free Sunday & Drop-in Activity

704 Camino Lejo, 505-982-4636; [wheelwright.org](http://wheelwright.org)

Jewelry making; all materials provided;

noon-5 p.m., in the museum classroom.

### MONDAY 5/4

#### Events

##### Southwest Seminars

Hotel Santa Fe; [southwestseminars.org](http://southwestseminars.org)

Archaeologist Keith Kintigh on Late Prehistory

of the Zuni Area: After Chaco & Before Coronado;

6 p.m.; \$20.

### TUESDAY 5/5

#### Art Openings

##### Santa Fe Public Library Main Branch

45 Washington Avenue, 505-955-6781; [santafelibrary.org](http://santafelibrary.org)

*Come See The Cats!*, paintings by Bobbie Ferrell;

through May; reception 6-7:45 p.m.

#### Events

##### ¡Vámonos! Take a Walk on the Southside

Southside Library, 6599 Jaguar Drive; [sfct.org](http://sfct.org)

Santa Fe Conservation Trust's free, urban-trek

series; 6 p.m. today, June 2, July 14, August 4,

September 1, and October 6; 505-989-7019.

### WEDNESDAY 5/6

#### Performances

##### Dance Theatre of Harlem

Lensic Performing Arts Center; [lensic.org](http://lensic.org)

Blending classics and neoclassical works by George

Balanchine and artistic director Robert Garland;

7:30 p.m.; \$101-\$151; limited availability.

##### Flamenco Fiesta de Santa Fe 2026

— Flamenco Across the Ocean

Teatro Paraguas; [teatroparaguasnm.org](http://teatroparaguasnm.org)

Chuscales, Mina Fajardo, Monze Diaz, Argos

MacCallum, Jojo Tarnoff, and Jeff Tarnoff bring

attention to oceanic plastic pollution; 7 p.m. today,

Thursday, May 8, 9, and 13, 2 p.m. May 9 and 10;

\$30 in advance and at the door, discounts available.

### THURSDAY 5/7

#### Performances

##### At the Wake of a Dead Drag Queen

Santa Fe Playhouse; [santafeplayhouse.org](http://santafeplayhouse.org)

Terry Guest's play celebrating the enduring power

of drag; 7:30 p.m. Thursdays-Saturdays, 2 p.m.

Sundays through May; \$17-\$74.

#### Ben Kweller

The Bridge at Santa Fe Brewing; [lensic360.org](http://lensic360.org)

Rock/power-pop singer-songwriter; 7:30 p.m.; \$29.

#### David Geist Music Experience

Osteria d'Assisi Cabaret; [osteriadassisi.com](http://osteriadassisi.com)

Pianist-vocalist David Geist; 7-10 p.m.; \$5 cover.

#### Drastic Andrew Band

Unit B; [unitbsantafe.com](http://unitbsantafe.com)

Progressive rock, with multi-instrumentalist

Jesse Deluxe; 7 p.m. \$23.43.

#### Eureka Day

The Lab Theater; [nmactorslab.com](http://nmactorslab.com)

Jonathan Spector's comedic and satirical play about

vaccine mandates; 7:30 p.m. Thursdays-Saturdays,

2 p.m. Sundays through May 17; \$21.50-\$41.50.

#### Hillary Smith Jazz Quintet

Santa Fe Woman's Club; [cismn.org](http://cismn.org)

Performing in Voices for Safe Tomorrows, a

fundraiser for Communities in Schools Family

Emergency Fund; 4 p.m., doors 3:45 p.m.; \$100.

#### Jono Manson

Edition One Gallery; [sfnm.co/jonoeditionone](http://sfnm.co/jonoeditionone)

Roots singer-songwriter and multi-instrumentalist;

7-9:30 p.m.; \$28.26.

### Events

#### Vista Grande Library Spring Book Sale

Vista Grande Public Library, Eldorado; [vglibrary.org](http://vglibrary.org)

Pre-sale 8:15-9 a.m., \$50 at the door; early bird sale

9-10 a.m., \$25; free admission 10 a.m.-6 p.m.

### OUT OF TOWN

#### Albuquerque

##### Dafnis Prieto Sí o Sí Quartet

Outpost Performance Space; [outpostspace.org](http://outpostspace.org)

Drummer/composer; 7:30 p.m. Friday, May 1;

\$17.04-\$38.29.

##### The Arts of Democracy in New Mexico

An exhibit of art, culture, history, science, and

curriculum-based programming in the Wonders

on Wheels mobile museum travels to public

schools and libraries throughout New Mexico.

To schedule a Wonders on Wheels visit, contact

Jennifer Hasty at [jennifer.hasty@dca.nm.gov](mailto:jennifer.hasty@dca.nm.gov),

505-487-3620. (See story, page 24)

##### Bernalillo

##### Rainbow Runners classic car show

Coronado Historic Site, 485 Kuaua Road

Native arts & crafts market, guided tours,

and vendors; 10 a.m.-3 p.m. Sunday, May 3,

roots rock band DK & The Affordables 1-3 p.m.;

held in celebration of the 100th anniversary

of Route 66.

##### Cerrillos

##### Box Studio & Sculpture Garden

3453 N.M. 14; [boxstudiosculpturegarden.com](http://boxstudiosculpturegarden.com)

*Painted Ponies*, sculpture by Kevin Box, inspired

by origami artist Te Jui Fu; *ORIGAMIINTHEGARDEN*,

sculpture by Jennifer Box and Kevin Box; opening

Friday, May 1, through October.

##### Corrales

##### INHABIT Galerie

4436 Corrales Road, Building 1; [inhabitagalerie.com](http://inhabitagalerie.com)

*MIDNIGHT IN THE GARDEN*, group show

of multidisciplinary works; through July 5;

reception 4-6 p.m. Friday, May 1.

##### Taos

##### Novalima

Daleee at The Solar Center; [daleeektaos.com](http://daleeektaos.com)

Latin Grammy-nominated musical collective

from Peru; 7 p.m. Saturday, May 2; \$23 in advance,

\$28 at the door. ◀

# PASA PLANNER

► A guide to performances & events for the weeks ahead



Katya Grineva returns to Taos May 14 for an intimate recital in the Taos Art Museum at Fechin House following her 23rd season at Carnegie Hall and a recent appearance at the Royal Opera House in Mumbai, India.

## COMING SOON

### SWAIA Native Fashion Week

Eldorado Hotel & Spa ballrooms; swaia.org  
Including Patricia Michaels (Taos Pueblo), Himikalas Pamela Baker (Squamish/Kwakiutl/Tlingit/Haida), Jontay Kahm (Plains Cree); Native Creatives Market 10 a.m.-4 p.m. May 8 and 9, free admission; A Taste of Native Fashion Gala 6-8:30 p.m. May 9, \$250.

### Allison Davis

Paradiso; paradisosantafe.com  
Jazz singer, with Alex Murzyn, John Funkhouser, Russ Scanlon, Terry Burns, Mickey Patten, and Joe Chellman; 7:30 p.m. May 8; \$17.64-\$22.95.

### Jimmy Stadler Band

Unit B; unitbsantafe.com  
Country rock singer-songwriter, percussionist Mark Clark, and bassist Dave Toland; 7 p.m. May 8; \$22-\$34.

### Richard Smith

Gig Performance Space; gigsantafe.com  
Fingerstyle guitarist with a wide-ranging repertoire; 7:30 p.m. May 8; \$31 in advance.

### Angela Autumn

The Marigold Room; hotelglorietasantafe.com  
Nashville-based singer-songwriter and multi-instrumentalist; singer-songwriter Kai Warrior opens; 8 p.m. May 8; \$24.69.

### An Evening with Wilco

Popejoy Hall; lensic360.org  
Touring behind its catalog reissues: an expanded three-LP version of 2010's *The Whole Love* and a nine-LP/four-CD set of 2004's *A Ghost is Born*; 8 p.m. May 8; \$44.50-\$94.50.

### SMOOTH

Santa Fe Plaza  
Free concert by Everett Lovato's Latin rock/Bay Area-sound band, featuring percussionist Karl Perazzo and trumpet player Adolfo Acosta; noon-5 p.m. May 9.

### Gamelan Encantada

Center for Contemporary Arts; gamelanencantada.net  
Percussion duo performing traditional Javanese music and works by American composers; music of Maria Siino, K.R.T. Wasitodiningrat, Lou Harrison, and Daniel Schmidt; 2 p.m. May 9; \$10-\$20 at the door.

### Santa Fe Women's Ensemble

First Presbyterian Church; sfwe.org  
Premiere of Z. Randall Stroope's "Homecoming," joined by trumpeter Jan McDonald, accompanied by pianist Bill Epstein; 3 p.m. May 9 and 10; \$30 in advance, \$35 at the door, discounts available.

### Hamlet

Great Hall at St. John's College, 1160 Camino de Cruz Blanca  
Student-produced performance of Shakespeare's tragedy in five acts; 6:30-10 p.m. May 9, 10, and 13; free admission.

### An evening of Adele with Myrrhine

Unit B; unitbsantafe.com  
Backed by Mark Clark, Andy Kingston, Tiho Dimitrov, Artha Meadors, Natanya Manson, and Kelly Kuhn; 7 p.m. May 9; \$34.57.

### Santa Fe Symphony

Lensic Performing Arts Center; santafesymphony.org  
Carl Orff's "Carmina Burana," with soprano Amy Owens, tenor Spencer Hamlin, and bass-baritone Ed Parks; 7 p.m. May 9; \$36-\$120.

### Seth Meyers

Route 66 Casino, Albuquerque; sethmeyers.com  
Stand-up comedy tour; 7 p.m. May 9; \$47-\$157.

### Juani de la Isla Quartet

Paradiso; ampconcerts.org  
The flamenco guitarist's cross-cultural ensemble; 7:30 p.m. May 9; \$50-\$70.

### Tony McManus

Gig Performance Space; gigsantafe.com  
Traditional Celtic music guitarist; 7:30 p.m. May 9; \$31.

### The Dead Beatclub

Tumbleroot Alegria; tumblerootbreweryanddistillery.com  
B 52's tribute band, with tribute band Atomic Blondie and Lord Buckley's Church of the Living Swing (a tribute to the early 20th-century comedian performed by Rod Harrison); 8 p.m. May 9, doors 7 p.m.; \$15 advance in person, \$18.32 online, \$20 at the door.

### Santa Fe Community Orchestra

Scottish Rite Temple; sfco.org  
Majestic Voices, season finale; music of Schumann and Saint-Saëns; 1:30 p.m. May 10; free admission.

### Mother's Day concert

Federal Park, 100 S. Federal Place; santafeconcertband.org  
The Santa Fe Concert Band performs Broadway and operatic selections; plus, music by women composers; 2 p.m. May 10.

### Early Music Missouri

San Miguel Chapel; earlymusicmissouri.net  
Musicke's Cordes duo Samuel Breene (baroque violin) and Jeffrey Noonan (baroque guitar); Renaissance and baroque selections; 4 p.m. May 10; \$20 at the door, student discounts available.

### Santa Fe Opera 2026: Music, Stories and Sneak Previews

President's Room at Rio Chama Prime Steakhouse; sfm.co/SFOPERA2026  
Composer/conductor/pianist Joe Illick shares musical highlights and insights into the season's productions; 5-7 p.m. May 12; \$30-\$40 in advance. Light appetizers provided. Cash bar available.

### Speedbuggy USA with JACOB SHIJE TRIO

Tumbleroot Alegria; sfm.co/speedbuggy  
Rock-n-roll/rockabilly; Jacob Shije Trio opens; doors 6; music 7 p.m. May 12; \$10 in advance at the door, \$12.74 in advance online, \$15 day of show.

### The Indefinite Sublime — Tom McCarthy on *Moby-Dick*

Lensic Performing Arts Center; lensic.org  
The novelist-critic deconstructs Herman Melville's epic tale, focusing on its structural, linguistic, and technological components; 7:30 p.m. May 12; register for free tickets online.

### Out at Sea

Teatro Paraguas; theatergrottesco.org  
Physical-ensemble company Theater Grottesco presents Slawomir Mrozek's absurdist comedy; 2 and 7:30 p.m. May 14-31; \$20-\$35, pay what you wish at the door (subject to availability).

### Katya Grineva

Taos Art Museum at Fechin House  
Piano recital, including the Allegretto from Beethoven's Seventh Symphony; 5:30 p.m. May 14; \$35 and \$45. Call 575-758-2690 for reservations. Seating is limited to 25 guests.

### Beatles vs. Stones — A Musical Showdown

St. Francis Auditorium in the New Mexico Museum of Art; sfm.co/beatlesvsstones  
The show pits Rolling Stones tribute band Jumping Jack Flash and rival Abbey Road Band in a mash-up duel; 7 p.m. May 14; tickets start at \$100. Proceeds benefit the St. Vincent Hospital Foundation.

### Karen Morgan

Unit B; unitbsantafe.com  
Ex-trial lawyer turned stand-up comedian; 7 p.m. May 14; \$34-\$45.

### Ben Folds & A Piano

Lensic Performing Arts Center; lensic.org  
Pop music singer-songwriter-composer; 7:30 p.m. May 14; \$71-\$136.

### Louis Hayes Quintet

Outpost Performance Space, Albuquerque, outpostspace.org, and Unit B, sfmusiccollective.org  
NEA Jazz Master percussionist; 7:30 p.m. May 14 (Albuquerque), \$17.13-\$38.43; 7 p.m. May 16 (Santa Fe), \$35-\$40.

### Santa Fe International Literary Festival

Santa Fe Community Convention Center; sfm.co/litfest  
Authors, poets, and other literary figures, including U.S. Poet Laureate Arthur Sze, National Book Award finalist Deborah Jackson Taffa, and *Dark Winds* screenwriter and actor DezBaa; May 15-17; tickets vary by event; waitlists available.

### Dark Sky Gathering

Lester Jackson Campground, Pie Town; darkskyland.us; cdtcoalition.org  
The second annual event (May 15-17) brings together night-sky enthusiasts, community members, scientists, and advocates seeking to create an astro-wilderness corridor along the Continental Divide National Scenic Trail, as a protected refuge; organizers offer expanded programming, expert astronomy speakers, workshops, and hands-on stargazing experiences.

### The Global Language of Headwear: Cultural Identity, Rites of Passage, and Spirituality

Museum of Navajo Art & Culture, 301 W. Main Street 505-599-1533, Farmington  
Traveling exhibit of hats and headdresses from 42 countries across five continents; opening May 15, through September 19. Admission is free.

**Mike Zito**Unit B; [amconcerts.org](http://amconcerts.org)

Blues-rock guitarist-songwriter; 7 p.m. May 15; \$40-\$60.

**Christina Gomez y Los Cuates**Paradiso; [paradisosantafe.com](http://paradisosantafe.com)

Americana/country band, with lead vocalist Gomez, guitarist Caleb Garvin, keyboardist Jesse Lazcano, bassist Wade Knight, and percussionist Ralph Marquez; 7:30 p.m. May 15, doors 7 p.m.; \$17.64-\$22.95.

**Rakesh Chaurasia**Outpost Performance Space, Albuquerque; [outpostspace.org](http://outpostspace.org)

Grammy Award-winning bansuri flutist, joined by tabla player Amit Kavthekar; 7:30 p.m. May 15; \$17.04-\$38.29.

**Crawdaddy Blues Fest**Madrid Railyard, Madrid; [rawdaddybluesfest.com](http://rawdaddybluesfest.com)

Four stages; twenty-plus acts, including Felix y los Gatos, Ales Maryol, Hillary Smith, Amanda Fish, Levi Platero, and CW Ayon; gates open at noon May 16 and 17; \$35 per day in advance, \$40 day of, ages 11 and under admitted free.

**Montage Music Society**Private venue; [montagemusicsociety.com](http://montagemusicsociety.com)

Violinist Stephanie Sant'Ambrogio, clarinetist Graeme Steele Johnson, cellist Walter Haman, and pianist Debra Ayers; music of Ben-Amots, Debussy, Jalbert, Stravinsky, and Wolosoff; 3 p.m. May 16; \$35 in advance; 505-795-1019.

**Louis Hayes Quintet**Unit B; [santafemusiccollective.org](http://santafemusiccollective.org)

Veteran jazz percussionist; 7 p.m. May 16; \$35-\$50.

**Darrell Scott & Rob Ickes**Tumbleroot Alegría; [lensic360.org](http://lensic360.org)

Duo performance by the award-winning Americana artists; 7:30 p.m. May 16; \$35 in advance, \$40 day of show.

**Sandra Wong and Jon Sousa**Gig Performance Space; [gigsantafe.com](http://gigsantafe.com)

Folk fiddle and vocal duo; 7:30 p.m. May 16; \$31.

**High Desert Winds Santa Fe Spring Concert**St. Francis Auditorium; [concordiasantafe.org](http://concordiasantafe.org)

The community wind ensemble presents a tribute to mothers and other prominent women, featuring music of Piazzolla, Holst, Thomas, and Brahms; 2 p.m. May 17; donations accepted.

**Eric Johnson**Lentic Performing Arts Center; [amconcerts.org](http://amconcerts.org)

Texas guitarist on his Texaphonic Tour, with percussionist Tal Bergman and bassist Daniel Kimbro; 7:30 p.m. May 17; \$44-\$66.

**MAY****Native Elements Art Festival & Market**Santa Fe Botanical Garden and Santa Fe Convention Center; [santafebotanicalgarden.org](http://santafebotanicalgarden.org)

Featuring approximately 160 Indigenous artists; opening celebration, auction, and Distinguished Achievement Award Ceremony 5:30 p.m. May 21, \$100; reception and VIP Night Market May 22, \$65; market and programming 9 a.m.-5 p.m. May 23, 10 a.m.-4 p.m. May 24, \$10 each day.

**The Green Man — Voice of the Forest**Paradiso; [paradisosantafe.com](http://paradisosantafe.com)

Spoken-word performance by poet-storyteller Timothy P. McLaughlin; opening set by singer-songwriter Nick Davidson; 7:30 p.m. May 21, doors 7 p.m.; \$20, seniors and students \$15.

**Sangre de Cristo Chorale**First Presbyterian Church; [sdcchorale.org](http://sdcchorale.org)

America's Bard, celebrating poet Walt Whitman, featuring Jeffrey Van's "A Procession Winding Around Me" and Whitman texts set to music by Clausen, Whitacre, Dello Joio, and Schumann; 4 p.m. May 23 and 24; \$30, students 17 and under admitted free.

**Ghalia Volt**Unit B; [amconcerts.org](http://amconcerts.org)

Blues guitarist; \$33 in advance, \$38 day of show, \$55 premium seating; 7 p.m. May 27.

**Tab Benoit**KiMo Theatre, Albuquerque; Tumbleroot Alegría; [amconcerts.org](http://amconcerts.org)

Delta blues singer-songwriter on his Soul of Swamp Tour 2026; 7:30 p.m. May 28 (Albuquerque), \$34-\$55; 7:30 p.m. May 30 (Santa Fe), \$51 in advance, \$56 day of show.



Seth Meyers, Emmy Award-winning writer, New York Times bestselling author, and host of NBC's *Late Night with Seth Meyers* for over 10 years, stops by Route 66 Casino in Albuquerque May 9 on his stand-up comedy tour.

**ANTHOLOGY #2 Premiere**New Mexico School for the Arts; [sfnm.co/anthology2](http://sfnm.co/anthology2)

Ramos Danza dancers perform original works by artistic director Fernando Ramos and guest choreographer Gaby Hernández, with music by Rajah Bose; 7 p.m. May 30, 5 p.m. May 31, 7 p.m. June 1; \$35-\$100.

**The Sign of the Four**The Ark Bookstore; [arkbooks.com](http://arkbooks.com)Astrologer Heather Roan Robbins (see her weekly Star Codes column in the *Pasatiempo*) describes aspects of the five Uranus-Pluto trines occurring between July 2026 and May 2028; 2 p.m. May 31; \$37.87.**JUNE****Indian Theater: Native Performance, Art, and Self-Determination since 1969**SITE Santa Fe; [sitesantafe.org](http://sitesantafe.org)

Intergenerational exhibition of 100-plus artworks by 40-plus artists and collectives with Native American, Alaska Native, First Nations, Métis, and Inuit backgrounds; opening June 5.

**New Mexico Shakespeare Festival**Veteran's Memorial Park, 1100 Louisiana Boulevard SE, Albuquerque; [nmshakes.org](http://nmshakes.org)*Julius Caesar* June 5-7, 18-20, 26-28, July 2, 5, and 10; *The Winter's Tale* June 12-14, 19, 21, 25, 27, July 3, 9, and 11; free admission.**Clive Carroll**Unit B; [unitbsantafe.com](http://unitbsantafe.com)

British acoustic guitarist blending classical, folk, blues, and jazz; 7 p.m. June 10; \$25-\$40.

**Patti LaBelle**Route 66 Casino, Albuquerque; [pattilabelle.com](http://pattilabelle.com)

Celebrating six decades of hits; 8 p.m. June 12; \$47-\$182.

**Indigenous Foodways Festival**Museum of Indian Arts & Culture; [indigenousfoodwaysfestival.com](http://indigenousfoodwaysfestival.com)

Native chefs, farmers, and cultural leaders celebrate culinary traditions through storytelling, cooking demonstrations, tastings, hands-on classes, and conversations; participants include Justin Pioche (Salt Clan Diné), Ray Naranjo (Santa Clara Pueblo), Crystal Wahpepah (Kickapoo); 10 a.m.-6 p.m. June 20; \$15, \$5 for kids, add-on experiences start at \$25. General admission includes all-day admission to the Museum of Indian Arts &amp; Culture.

**Eddy Daniels**Unit B; [santafemusiccollective.org](http://santafemusiccollective.org)

Jazz clarinetist-saxophonist, featuring pianist Lee Musiker, with bassist Gordon Johnson, and percussionist John Trentacosta; 7 p.m. June 26 and 27; \$49.51-\$65.45.

**JULY****Santa Fe Wine Festival**El Rancho de las Golondrinas; [golondrinas.org](http://golondrinas.org)

Samples and glasses of selections from New Mexico-based wineries; plus, artisan vendors, food trucks and vendors; beer and apple cider available; noon-6 p.m. July 4 and 5; \$9.70-\$20.33, VIP \$86.20, ages 12 and under no charge.

**Kipp Bentley and The Night Letter Orchestra**Unit B; [unitbsantafe.com](http://unitbsantafe.com)Celebrating the release of his new record *Night Letter*, with vocalist Nathan Dunton, pianist James Raymond, bassist Jon Gagan, percussionist Mark Clark, violinist Karina Wilson, and guitarists Jon Graboff and Jono Manson; 7 p.m. July 11.**James McMurtry**The Bridge at Santa Fe Brewing Company; [lensic360.org](http://lensic360.org)Touring in support of *The Black Dog & the Wandering Boy*; 7 p.m. July 16; BettySoo opens; \$32.50 in advance, \$37.50 day of show.**AUGUST****Santa Fe Beer Festival**El Rancho de las Golondrinas; [golondrinas.org](http://golondrinas.org)

Local craft beer vendors and food trucks; noon-6 p.m. August 8; \$9.70-\$15.01, VIP \$43.70, ages 12 and under free admission.

**Songs & Stories: Ray Wylie Hubbard, Eliza Gilkyson, and Jimmie Dale Gilmore**Albuquerque, Santa Fe, and Taos; [lensic360.org](http://lensic360.org)

Veteran songwriters; 7:30 p.m. August 28, KiMo Theatre; 7:30 p.m. August 29, Lentic Performing Arts Center; 7 p.m. August 30, The Mothership; \$42-\$73.

**SEPTEMBER****102nd Burning of Zozobra**Fort Marcy Park; [burnzozobra.com](http://burnzozobra.com)

This year's theme The Tyranny of Gloom vs. the Spirit of '76 celebrates America's 250th anniversary September 4; \$30 discounted general admission tickets available online through September 3, ages 10 and under admitted free, advance discounts available; premium tickets available online.

**TajMo**Santa Fe Opera; [lensic360.org](http://lensic360.org)Taj Mahal and Keb' Mo' on their *Room On The Porch* tour; 7 p.m. September 20, gates 6 p.m.; \$44-\$99.

# ON VIEW

## Santa Fe

### 5. Gallery

2351 Fox Road, Suite 700, 505-257-8417; 5pointgallery.com  
*pointing towards the moon*, drawings by Christine Taylor Patten; through May 30.

### Art on Barcelona Gallery

Unitarian Universalist Santa Fe, 107 W. Barcelona Road, 917-566-0708; uusantafe.org/art-on-barcelona  
 THIS LAND, photographs by Frank Rivas; through June.

### Big Happy

1300 Luisa Street, #3A, 505-570-7287; bighappygallery.com  
*Works on Paper*, Patrick Kikut paintings; through May 23.

### CENTER Santa Fe

1570 Pacheco Street, Unit B1, 505-933-9146  
*Elements of Wonder: When Nature Becomes Art*, work by photographer Jon McCormack; through May 17.

### Daniel Cooney Fine Art

1600 Lena Street, Suite F5, 505-416-5452; danielcooneyfineart.com  
*In My Hand*, drawings by Saul Bolasni (1916-2012); through May 2.

### Electra Gallery

825-C Early Street, 505-231-0354; electragallery.com  
*Spring Salon*, group show; through June 21.

### Evoke Contemporary

550 S. Guadalupe Street, 505-995-9902; evokecontemporary.com  
 Michael Scott: *Poems on Fire*; Mark Spencer: *Melting Pots*; paintings; through May 23.

### FOMA

333 Montezuma Avenue, 505-660-0121  
 Paintings by Holly Wood; through Saturday, May 2.

### LewAllen Galleries

1613 Paseo de Peralta, 505-988-3250; lewallengalleries.com  
*New American Lyrical Landscapes*, by Joseph DiGiorgio (1931-200); through May 9. *The New West: GL Richardson + Morgan Irons*, paintings; *Western Reliquaries*, paintings by William Shepherd (1943-2024); through May 23.

### The Owings Gallery

100 E. Palace Avenue, 505-982-6244; owingsgallery.com  
*Field Notes*, multidisciplinary group show; through Monday, May 4.

### Zane Bennett Contemporary Art

435 S. Guadalupe Street, 505-982-8111; zanebennettgallery.com  
*Balancing Acts: Janet Abrams*, clay sculpture; through Saturday, May 2. *Lucid Perturbations: The Sewn Drawings and Books of China Marks*; through July 11;

## MUSEUMS & ART SPACES

## Santa Fe

### El Rancho de las Golondrinas

334 Los Pinos Road, 505-471-2261; golondrinas.org  
 Living-history museum dedicated to the heritage and culture of 18th- and 19th-century New Mexico.

### Georgia O'Keeffe Museum

217 Johnson Street, 505-946-1000; okeeffemuseum.org; access-ok.gokm.org  
*A Circle that Nothing Can Break*, O'Keeffe paintings; through June 1 • *Tewa Nangeh/Tewa Country*, contemporary works by artists, scholars, and culture bearers from the six Tewa Pueblos of Northern New Mexico; through September 7.



The *Lucid Perturbations* exhibit at Zane Bennett Contemporary Arts includes 200 examples from China Marks' sewn body of work, which includes over 600 large collaged tapestries, broadsides of embroidered text, small and medium-sized drawings; plus, a small library of sewn books from the last 23 years of her artistic career. Marks' exhibit is on view through July 11. Above, *Florabundum*

### IAIA Museum of Contemporary Native Arts

108 Cathedral Place, 505-983-8900; iaia.edu/mocna  
 2025-2026 IAIA BFA Exhibition: *Rooted in Relation*, works by emerging IAIA artists; through May 15 • *Stella Nall: Offerings from My Heart*, multidisciplinary works; through June 14 • *Paper Trails: Unfolding Indigenous Narratives*, works by Canadian and U.S. artists; through July 12.

### Museum of Encaustic Art

18 County Road 55A, Cerrillos, 505-424-6487  
 Rotating exhibits; moeart.org.

### Museum of Indian Arts and Culture

710 Camino Lejo, 505-476-1269; indianartsandculture.org  
*Makowa: The Worlds Above Us*, group show; through August 17.

### Museum of International Folk Art

706 Camino Lejo, 505-476-1204; moifa.org  
*Sandroing: Tracing Kastom in Vanuatu*, sand drawings; through Sunday, April 26 • *Appearances Deceive*, embroidery by Policarpo Valencia; through July 26 • *Truths Be Told: Artists Activate Traditions*, group show; January 17, 2027 • *Multiple Visions*, works by Alexander Girard.

### New Mexico Governor's Mansion

1 Mansion Drive, nmgmf.org  
 Works by Gerald Cassidy, William Penhallow Henderson, Gustave Baumann, and more, on loan from museums. Public and private tours available. Contact Kirstin Griffin, at 505-476-2800, Kirstin.Griffin@gsd.nm.gov.

### New Mexico History Museum and Palace of the Governors

113 Lincoln Avenue, 505-476-5200; nmhistorymuseum.org  
*Chimayó: A Tradition of Faith*, photographs of pilgrimages; through May 2027 • *A Question of Power*, documentation of Sarah Jane White, Lucie A. Willie, and Molley Hogue's pivotal roles in halting the proposed Desert Rock coal-fired power plant on the Navajo Nation; through June 27, 2027. Walking Tours of Historic Downtown, weekly through November.

### New Mexico Museum of Art

107 W. Palace Avenue, 505-476-5072; nmartmuseum.org  
*O'Powa O'Meng: The Art and Legacy of Jody Folwell*, ceramics; through June 21.

### New Mexico Museum of Art Vladem Contemporary

404 Montezuma Avenue, 505-476-5062; nmartmuseum.org/vladem-contemporary  
*Lucy R. Lippard: Notes From the Radical Whirlwind*, objects tracing Lippard's career and contributions; through August 9.

### Nuevo Mexicano Heritage Arts Museum

750 Camino Lejo, nmheritagearts.org  
*Grow and Flourish*, recent acquisitions of work by youth and Spanish Market artists; through May 23 • *New Mexico Stories*, works from the collection; through December 12.

### Wheelwright Museum of the American Indian

704 Camino Lejo, 505-982-4636; wheelwright.org  
*Emmi Whitehorse: Intimate Landscapes*, paintings; through June 15 • *Silver Honors Stone*, work by the late Santo Domingo jeweler Julian Lovato (1925-2018); through October 17.

## Albuquerque

### Albuquerque Museum

2000 Mountain Road NW, 505-243-7255; cabq.gov/culturalservices/albuquerque-museum  
*Delilah Montoya: Activating Chicana Resistance*, retrospective exhibit of Montoya's photographs, prints, installations, and books; through May 3.

### Indian Pueblo Cultural Center

2401 12th Street NW, 505-843-7270; indianpueblo.org  
*50 for 50: Indian Pueblo Cultural Center, 1976-2026*, highlighting the center's history through Pueblo imagery and perspectives; through February 15, 2027. Weekend Native dance performances.

### National Hispanic Cultural Center

1701 Fourth Street SW, 505-246-2261; nhcnm.org  
*What We Bring to the Table*, works by NHC staff members; through June 7.

### New Mexico Museum of Natural History and Science

1801 Mountain Road NW, 505-841-2800; nmnaturalhistory.org  
*Animal Armor: The Evolution of Armor in Dinosaurs and Prehistoric Animals*, traveling exhibit of fossil replicas by Gaston Designs.

## Corrales

### INHABIT Galerie

4436 Corrales Road, Building 1; inhabitgalerie.com  
*METAL RULES!*, group show of contemporary works; through May 2.

## Española

### Bond House Museum

706 Bond Street, 505-747-8535; facebook.com/sghsbondhousemuseum  
*Northern New Mexico Artist Invitational*, works by Steve Chaves, James Espinoza, Michelle Ferran, and Roger Montoya; through May. Free admission.

## Taos

### Harwood Museum of Art

238 Ledoux Street, 575-758-9826; harwoodmuseum.org  
*Pueblo Foodways*; through May 30 • *Pursuit of Happiness: GI Bill in Taos*, works from the permanent collection on post-WWII artistic movements; through May.

### Taos Art Museum at Fechin House

227 Paseo del Pueblo Norte, 575-758-2690; taosartmuseum.org  
*Taos Reimagined: Modernist Experiments in the High Desert*, group show; through May 10 • *Nicolai Fechin: Figures, Nature and Expression*, paintings and drawings; through September 6.