

PASA WEEK

compiled by Pamela Beach

ARTS. ENTERTAINMENT. CULTURE.

FRIDAY 4/3

Art Openings

Dusk Gallery

129 W. San Francisco Street; duskphotogallery.com
NOSTALGIA, group photographic show;
reception 5-7 p.m.

IAIA Museum of Contemporary Native Arts

108 Cathedral Place, 505-983-8900; iaia.edu/mocna
2025-2026 IAIA BFA Exhibition: *Rooted in Relation*,
works by emerging IAIA artists; through May 15;
panel discussion 2-3 p.m., reception 5-7 p.m.

Seth Benzel Art Space

906 S. St. Francis Drive
En Route, paintings by Benzel; reception 5-8 p.m.

Nüart Gallery

670 Canyon Road, 505-988-3888; nuartgallery.com
Private Lives, paintings by Amy Hill; through April 19;
reception 5-7 p.m.

Performances

Big Richard

Tumbleroot Alegria; lensic360.org
Neo-acoustic Americana quartet; 7:30 p.m.; \$30.

Bob Fox Trio

Unit B; unitsantafe.com
Fox on piano, John Trentacosta on drums, and
Gordon Johnson on bass; 7 p.m.; \$29-\$45.71.

Chat Noir Cabaret

Los Magueyes; los-magueyes.square.site
Pianist-vocalist Charles Tichenor; 6-9 p.m.
Fridays and Saturdays; no cover.

Entreflamenco Company spring season

El Flamenco Spanish Cabaret; entreflamenco.com
Antonio Granjero and Estefania Ramirez; 7:30 p.m.
Fridays and Saturdays through June 28; \$25+.

Hillary Smith and ChillHouse

Paradiso; paradisosantafe.com
Blues vocalist Smith, Jim Casey, Robert
"Milo" Jaramillo, Glenn Koster, and JD Davis;
7:30 p.m.; \$17.64-\$22.95.

Luck Be a Lady

Teatro Paraguas; teatroparaguasnm.org
Jerry Labinger's tribute to the music of
Frank Loesser's *Guys and Dolls*; 7:30 p.m.
today and Saturday, 2 p.m. Sunday; \$25,
youth \$15.

POTUS: Or, Behind Every Great Dumbass are Seven Women Trying to Keep Him Alive

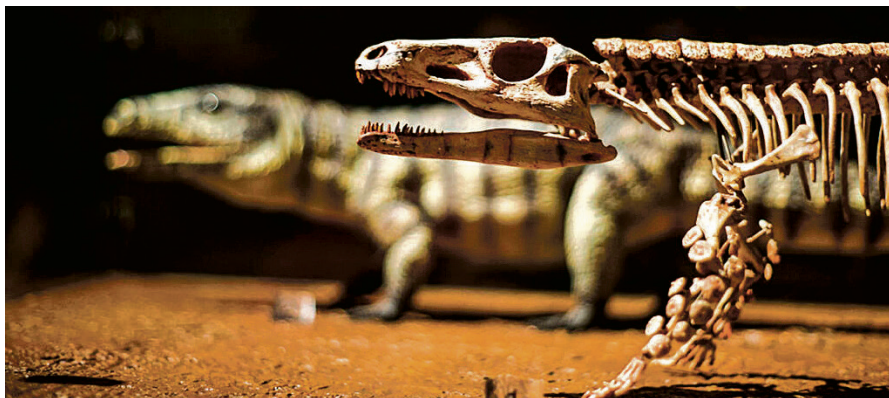
Santa Fe Playhouse; santafeplayhouse.org
Selina Fillinger's satire; 7:30 p.m. Fridays-Saturdays,
2 p.m. Sundays through April 12; \$18-\$80.

Schola Cantorum of Santa Fe

Shrine of Our Lady of Guadalupe, 417 Agua Fria Street
Good Friday Reflections, the choral group's
annual sacred-music concert; 7 p.m.;
donations accepted.

Spring Tablao Flamenco Fridays

Teatro Paraguas; teatroparaguasnm.org
Chuscales and Mina Fajardo and company; 7 p.m.,
April 17 encore; \$25, discounts available.



New Mexico Museum of Natural History and Science celebrates its grand reopening on Saturday, featuring fossil replicas by Gaston Designs exhibited in *Animal Armor: The Evolution of Armor in Dinosaurs and Prehistoric Animals*.

SATURDAY 4/4

Art Openings

Charlotte Jackson Fine Art

554 S. Guadalupe Street, 505-989-8688;
charlottejackson.com
The Whiter Shade of Pale, group show;
through May 5; reception 2-4 p.m.

RELAY Santa Fe

2873-B All Trades Road, 505-531-8003; relaysantafe.org
Ambient Intelligence, group show of interactive,
sensor-based installations and hybrid physical-
digital pieces; through April 24; reception 6-9 p.m.

Performances

Chatter North

Center for Contemporary Arts; chatterabq.org
Guitarist David Leisner, flutist Jesse Tatum,
and pianist Judith Gordon; program includes
Leisner's "Acrobats or Away;" 10:30 a.m.; \$5-\$17.

Dan Bern

Engine70 Studios; southwestrootsmusic.com
Folk-rock songwriter; 7:30 p.m. today and Sunday;
\$29.86.

Montage Music Society

Private venue; montagemusicsociety.com
Erik Chapman, Walter Haman, and Debra Ayers
perform works by Arvo Pärt, Jessie Montgomery,
and Beethoven; 3 p.m.; \$35; 505-795-1019.

The Outlaw Express: A Wild West Train Adventure

Sky Railway Train; skyrailway.com
Exodus Ensemble's immersive theater experience;
1:30 p.m.; \$154.

SUNDAY 4/5

Performances

Chancel Choir

First Presbyterian Church; fpcsantafe.org
Mozart's Requiem; 5:30 p.m., doors 5:15 p.m.;
donations accepted.

Doug Montgomery

Rio Chama; riochamasantafe.com
Performing Great American Songbook selections;
6-9 p.m. Sundays and Mondays; no cover.

Kevin Hays Trio

Gig Performance Space; gigsantafe.com
Jazz pianist, with bassist Rick Rosato and
percussionist Jimmy Macbride; 7:30 p.m.; \$36.20.

Events

Cake's Comedy Club

Cake's Cafe; cakes-cafe.com
Featuring Will Abeles, Loy Lee, and Air Jawson;
4:30-6 p.m.; \$10 cover.

MONDAY 4/6

Events

Southwest Seminars

Hotel Santa Fe; southwestseminars.org
Elite Maya Lineages in Tombs Also Found in Distant
Caves; 6 p.m.; \$20.

TUESDAY 4/7

Performances

Christian McBride & Edgar Meyer

Lensic Performing Arts Center; lensic.org
Virtuoso bassists touring in support of their album,
Who's Going To Play The Melody?; 7:30 p.m.; \$43.
(See story, page 20).

Events

Poets Jami Macarty and Kyce Bello

Collected Works Bookstore; collectedworksbookstore.com
Reading from *The Long Now Conditions Permit:
Poems and Far Country*; 6 p.m.

Renesan at CCA presentation

Center for Contemporary Arts; renesan.org
Machiavelli: How Machiavellian Was He?;
with historian JoAnn Moran Cruz; 1 p.m.; \$22.

WEDNESDAY 4/8

Performances

Roomful of Teeth

Center for Contemporary Arts; chatter.org
A cappella octet, joined by the Chatter ensemble;
7:30 p.m.; \$49 in advance, \$54 day of show.

Events

New Mexico Governor's Mansion tour

nmgmf.org
Free; noon, 1, and 2 p.m., by appointment;
contact Kirstin Griffin, 505-476-2800 or
kirstin.griffin@gsd.nm.gov.

THURSDAY 4/9

Art Openings

Dean's Gallery

Santa Fe Community College Fine Arts Center,
6401 Richards Avenue, 505-428-1501
Collective Glass, works by SFCC and Institute of
American Indian Arts students and instructors,
and local glass artists; through April 23; reception
2-4 p.m.

Performances

Bill Hearne

Cowgirl BBQ; cowgirlsbq.com
Americana singer-songwriter; 4 p.m.; no cover.

Kathy Griffin's New Face, New Tour Tour

Lensic Performing Arts Center; lensic.org
Stand-up comedian; 7:30 p.m.; \$59-\$95.

Let's Get Together and Hit Stuff

Zane Bennett Gathering Space at New Mexico School
for the Arts; nmschoolforthearts.org
NMSA's Percussion Ensemble performs;
6 p.m.; free admission.

Events

Globemaster Down

Collected Works Bookstore; collectedworksbookstore.com
Tod Robberson discusses his account of the
unsolved Cold War mystery with Jim Falk
of Global Santa Fe; 6 p.m.

OUT OF TOWN

Albuquerque

Paula Poundstone

Roy E. Disney Center for the Performing Arts; nhccnm.org
On her stand-up comedy tour; 7:30 p.m. Friday,
April 3; \$55 and \$65.

New Mexico Museum of Natural History and Science

1801 Mountain Road NW; nmnaturalhistory.org
*Animal Armor: The Evolution of Armor in Dinosaurs
and Prehistoric Animals*, traveling exhibit of fossil
replicas created by Gaston Designs; grand
reopening celebration 10 a.m.-5 p.m. Saturday,
April 14.

Lamy

Last Pint

Nuckolls Taproom Lamy; nuckollsbrewing.com
Traditional Celtic tunes; 4-6 p.m. Saturday, April 4;
no cover.

Pecos

Arrowhead Pueblo Tour

Pecos National Historical Park; nps.gov/peco
Free ranger-led walk to the 14th-century ruins;
1 p.m. Saturday, April 4. Registration required. ◀

CALENDAR LISTING GUIDELINES

▶ Email press releases to pambeach@sfnewmexican.com at least two weeks prior to the event date.

▶ Inclusion of free listings is dependent on space availability.

PASA PLANNER

► A guide to performances & events for the weeks ahead

COMING SOON

Bab L'Bluz

DALEEE KTAOS Solar Center, Taos; daleektaos.com
Moroccan-French rock band; 7 p.m. April 10; \$22.95.

An Evening of Sondheim

Unit B; unitsantafe.com

Pianist Kristin Ditlow and singer Christina Martos; 7 p.m. April 10; \$27.89-\$45.71, students \$14.51.

36th Annual Choreographers' Showcase

Railyard Performance Center; nmdancecoalition.org

Including La Emi, Elli Hindmarch and Mike Garcia, Myra Krien, Leigh Grant, Serena Gabriel, and Sneha Chakradhar and Geeta Chandran; 7:30 p.m. April 10 and 11; \$20-\$30 sliding scale, ages 11 and under no charge.

Fred Hersch Trio

Outpost Performance Space, Albuquerque; outpostspace.org

Jazz pianist, with bassist John Hebert, and percussionist Jonathan Blake; 7:30 p.m. April 10; \$17.04-\$38.29.

The Wailers

Tumbleroot Alegria; ampconcerts.org

On their 50th-anniversary world tour; 7:30 p.m. April 10; \$41 in advance, \$45 day of show.

MarchFourth

El Rey Theater, Albuquerque; ampconcerts.org

Theatrical ensemble of musicians, vaudeville-style dancers, stilt-walkers, and acrobats; psychedelic pop-rock band Banshee Tree opens; 8 p.m. April 10; \$27 in advance, \$32 day of show; standing-room-only venue.

Rachel Barton Pine recital

Duane Smith Auditorium, Los Alamos; losalamosconcert.org

Works by Beethoven, Dvořák, William Grant Still, Dolores White, and Billy Childs; 3 p.m. April 11; \$40 at the box office, \$43 online, ages 6-18 no charge.

Severall Friends

Muñoz-Waxman Gallery at the Center for Contemporary Arts; severallfriends.org

Spanish Baroque program, led by viola da gambist Mary Springfels, including mezzo-soprano Cecilia Duarte, lutenist Hector Alfonso Torres, recorder player Kathryn Montoya, and percussionist Jesse Joaquin Parker; 3 p.m. April 11; \$15 and \$40, 505-930-9393.

Taos School of Music Spring Festival

Harwood Museum of Art, Taos; sfm.co/TSMtour

Taos School of Music Chamber Music Festival alumni, and Haydn and Mendelssohn string quartets; 5:30 p.m. April 11, 3:30 p.m. April 12; \$24 and \$30.

The Canyon Road Band

Unit B; unitsantafe.com

Local Americana group Eb Lottimer, Anna Darrah, Darrah Ribble, Arne Bey, Wally Auserer, and Rus Scanlon; Cali Shaw opens; 7 p.m. April 11; \$10-\$38.

People Have the Power 2.0

Teatro Paraguas; teatroparaguasnm.org

Seven staged short plays performed in 90 minutes; 7:30 p.m. April 11 and 18, 2 p.m. April 12 and 19; \$18 and \$30.

Pilobolus: Other Worlds Collection Tour

Popejoy Hall, Albuquerque; popejoypresents.com

Contemporary dance company known for its physical prowess and wit; 7:30 p.m. April 11; \$29.50-\$89.50.

Yjastros: The American Flamenco Repertory Company

National Hispanic Cultural Center, Albuquerque, and the Lensic Performing Arts Center; nifnm.org

Out of Many, One, works choreographed by Adrián Santana, Sara Cano, Ricardo Moro, and Ana Morales; 7:30 p.m. April 11, 2 p.m. April 12; \$29-\$109, in Albuquerque; 7:30 p.m. April 18, \$33-\$96, in Santa Fe.

Diderot String Quartet

St. Francis Auditorium; sfpromusica.org

Adriane Post, Paul Dwyer, Kyle Miller, and Johanna Novo perform music of Haydn, Mozart, and Beethoven; 3 p.m. April 12; \$34-\$107.

Santa Fe Symphony Orchestra

Lensic Performing Arts Center; santafesymphony.org

Beethoven's symphony No. 1 and Strauss' "Don Quixote;" led by Guillermo Figueroa; 4 p.m. April 12; \$36-\$120.

Text Work: Decoding Shakespeare for Actors and Readers

Zoom-based; iscsantafe.org

Workshops aimed at explaining textual clues, led by Ariana Karp; Rhythm: Shakespeare's heartbeat, 5-7 p.m. April 12, 19, 26, and May 3; Imagery: In my mind's eye, 5-7 p.m. June 7 and 14; Architecture: Form and Function, 5-7 p.m. June 8, 15, and 22; \$100-\$200.

Spyro Gyra

KiMo Theatre, Albuquerque; ampconcerts.org

Smooth-jazz quintet; 7:30 p.m. April 12; \$38-\$55.

The Kingston Trio

St. Francis Auditorium; sfm.co/kingstontrio

Current members Tim Gorelangton, Mike Marvin, and Paul Robinson perform all the golden oldies; 7-9 p.m. April 14; \$59.

New Mexico Bach Society

Unitarian Universalist Santa Fe; nmpas.org

With mezzo-soprano Sarah Daughtrey, baritone Marshal Hollingsworth, violinists Lisa Grodin and Alan Mar, and violist Yuko Shimokawa; 7 p.m. April 15; \$23.50-\$67.50.

Entrapping Our Abundance

Aspect Media Village at the Midtown Campus; wisefoolnewmexico.org

Contemporary circus-arts troupe Wise Fool New Mexico's production confronting the Southwest's climate crisis; noon, 2, 5, and 7 p.m. performances April 16-19; \$10-\$55.

Australian Chamber Orchestra

Lensic Performing Arts Center; lensic.org

Kicking off its 50th-anniversary U.S. tour; 7:30 p.m. April 16; \$66-\$90.

APRIL

Coro de Cámara

St. Bede's Church (Santa Fe) and United Church of Los Alamos; corodecamara-nm.org

Connections: Weaving a Musical Tapestry; 4 p.m. April 18; Los Alamos performance 4 p.m. April 19; \$25 in advance.

Tiho Dimitrov album-release concert

Unit B; unitsantafe.com

Sleepless Nights, with saxophonist Horace Alexander Young, bassist Justin Bransford, keyboardist Brant Leeper, and percussionists Mark Clark and Mo Roberts; 7 p.m. April 18; \$30-\$45.

Korvin Orkestar

Paradiso; paradisosantafe.com

Balkan-music brass septet; 7:30 p.m. April 18; \$17.64-\$22.95.

Festival of Concert Bands II

Lensic Performing Arts Center; santafeconcertband.org

Santa Fe High School and Capital High School bands, and the Santa Fe Concert Band; 7 p.m. April 21. Free admission.

Gathering of Nations Pow Wow — The Last Dance

Tingley Coliseum, Albuquerque; gatheringofnations.com

Forty-third and final installment of North America's largest Indigenous celebration; April 24 and 25; \$25 per day, includes Stage 49, Horse Parade, and Traders Market; two-day event wristbands \$45.

Eric Henderson

St. Francis Auditorium; lensic360.org

Classical guitarist-composer on his Texaphonic Tour; 7:30 p.m. April 25; \$25-\$45.

Ukulele Orchestra of Great Britain

Lensic Performing Arts Center; lensic.org

Light-hearted ukulele-centric ensemble; 7:30 p.m. April 28; \$43-\$69.

Janeane Garofalo

Lensic Performing Arts Center; lensic360.org

On her stand-up comedy tour; 7:30 p.m. April 29; \$47.50-\$58.50.



The current Kingston Trio: Tim Gorelangton, Mike Marvin, and Paul Robinson carry on the original trio's iconic music of the '50s and '60s April 14 at St. Francis Auditorium.

MAY

Dafnis Prieto Sí o Sí Quartet

Outpost Performance Space, Albuquerque; outpostspace.org
Drummer/composer; 7:30 p.m. May 1; \$17.04-\$38.29.

The Heavy Heavy

Tumbleroot Alegría; lensic360.org
Retro-inspired rock band; 7:30 p.m. May 1; \$25 in advance, \$30 day of show.

Man-Moth & The Gospel of Possibility

Teatro Paraguas; teatroparaguasnm.org
A new collection of poems by Donald Levering; multimedia-enhanced readings by Levering, Gary Barten, Corinna MacNeice, and Barbara Mehlman; 7:30 p.m. May 1 and 2; 2 p.m. May 3; \$20, \$15 limited income; 505-424-1601.

The Met: Live in HD/Eugene Onegin

Lensic Performing Arts Center; lensic.org
Soprano Asik Grigoiran as Tatiana in this adaptation of Pushkin, with baritone Igor Golovatenko as Onegin; 11 a.m. May 2; \$29-\$35.

Dance Theatre of Harlem

Popejoy Hall, Albuquerque; popejoyrepresents.com
Redefined classical ballet repertoire; 7:30 p.m. May 2; \$29.50-\$89.50.

15th Annual Pueblo Fiber Arts Show

Buffalo Thunder Resort & Casino; sarweb.org
Artists' demonstrations, traditional dances featuring Pueblo textiles, a fashion show highlighting Pueblo designers, and opportunities to learn more about and purchase creations; 10 a.m.-4 p.m. May 3

Novalima

The Bridge at Santa Fe Brewing; lensic360.org
Peruvian electronica band; 7 p.m. May 3; \$20 advance, \$25 at the door.

Dylan Earl

The Marigold Room; hotelglorietasantafe.com
Outlaw-country songwriter; 8 p.m. May 3; \$20.09.

Flamenco Fiesta de Santa Fe 2026 — Flamenco Across the Ocean

Teatro Paraguas; teatroparaguasnm.org
Chuscales, Mina Fajardo, Monze Diaz, Argos MacCallum, flutist Jojo Tarnoff, and keyboardist Jeff Tarnoff bring attention to oceanic plastic pollution; 7 p.m. May 6, 8, 9, and 13, 2 p.m. May 9 and 10; \$30 in advance and at the door, discounts available.

Dance Theatre of Harlem

Lensic Performing Arts Center; lensic.org
Blending classics, neoclassical works by George Balanchine and artistic director Robert Garland; 7:30 p.m. May 6; \$101-\$171.

Ben Kweller

The Bridge at Santa Fe Brewing; lensic360.org
Rock and power-pop singer-songwriter; 7:30 p.m. May 7; \$29.

SWAIA Native Fashion Week

Eldorado Hotel & Spa ballrooms; swaia.org
Returns this year including Patricia Michaels (Taos Pueblo), Himikalas Pamela Baker (Squamish/Kwakiutl/Tlingit/Haida), Jontay Kahm (Plains Cree); Native Creatives Market 10 a.m.-4 p.m. May 8 and 9, free admission; A Taste of Native Fashion Gala 6-8:30 p.m. May 9, \$250.

Richard Smith

Gig Performance Space; gigsantafe.com
Fingerstyle guitarist; 7:30 p.m. May 8; \$31.

An Evening with Wilco

Popejoy Hall; lensic360.org
The rock band tours behind its catalog reissues: an expanded three-LP version of 2010's *The Whole Love* and a nine-LP/four-CD set of 2004's *A Ghost is Born*; 8 p.m. May 8; \$44.50-\$94.50.

Santa Fe Women's Ensemble

First Presbyterian Church; sfwe.org
Music Above and Beyond, featuring the premiere of Z. Randall Stroope's "Homecoming," joined by trumpeter Jan McDonald, accompanied by pianist Bill Epstein; 3 p.m. May 9 and 10; \$30 in advance, \$35 at the door, discounts available.

An evening of Adele with Myrrhine

Unit B; unitbsantafe.com
Backed by Mark Clark, Andy Kingston, Tiho Dimitrov, Artha Meadors, Natanya Manson, and Kelly Kuhn; 7 p.m. May 9; \$34.57.

Santa Fe Symphony

Lensic Performing Arts Center; santafesymphony.org
Carl Orff's "Carmina Burana," with soprano Amy Owens, tenor Spencer Hamlin, and bass-baritone Ed Parks; 7 p.m. May 9; \$36-\$120.

Seth Meyers

Route 66 Casino, Albuquerque; sethmeyers.com
Stand-up comedy tour; 7 p.m. May 9; \$47-\$157.

Tony McManus

Gig Performance Space; gigsantafe.com
Traditional Celtic-music guitarist; 7:30 p.m. May 9; \$31.

The Indefinite Sublime — Tom McCarthy on *Moby-Dick*

Lensic Performing Arts Center; lensic.org
The novelist-critic deconstructs Herman Melville's epic tale, focusing on its structural, linguistic, and technological components; 7:30 p.m. May 12; register for free tickets online.

Out at Sea

Teatro Paraguas; theatergrottesco.org
Physical-ensemble company Theater Grottesco presents Sławomir Mrożek's absurdist comedy; 2 and 7:30 p.m. May 14-31; \$20-\$35, pay what you wish at the door (subject to availability).

Ben Folds & A Piano

Lensic Performing Arts Center; lensic.org
Pop music singer-songwriter-composer; 7:30 p.m. May 14; \$71-\$136.

Mike Zito

Unit B; ampconcerts.org
Blues-rock guitarist-songwriter; 7 p.m. May 15; \$40-\$60.

Louis Hayes Quintet

Unit B; sfmusiccollective.org
NEA Jazz Master percussionist; 7 p.m. May 16; \$35-\$40.

Sandra Wong and Jon Sousa

Gig Performance Space; gigsantafe.com
Folk fiddle and vocal duo; 7:30 p.m. May 16; \$31.

Native Elements Art Festival & Market

Santa Fe Botanical Garden and Santa Fe Convention Center; santafebotanicalgarden.org
Featuring approximately 160 Indigenous artists; opening celebration, auction, and Distinguished Achievement Award Ceremony 5:30 p.m. May 21, \$100; reception and VIP Night Market May 22, \$65; market and programming 9 a.m.-5 p.m. May 23, 10 a.m.-4 p.m. May 24, \$10 each day.

Tab Benoit

KiMo Theatre, Albuquerque; Tumbleroot Alegría; ampconcerts.org
Delta blues singer-songwriter on his Soul of Swamp Tour 2026; 7:30 p.m. May 28 (Albuquerque), \$34-\$55; 7:30 p.m. May 30 (Santa Fe), \$51 in advance, \$56 day of show.

The Sign of the Four

The Ark Bookstore; arkbooks.com
Astrologer Heather Roan Robbins (see her weekly Star Codes column in the *Pasatiempo*) describes aspects of the five Uranus-Pluto trines occurring between July 2026 and May 2028; 2 p.m. May 31; free admission.

JUNE

Indian Theater: Native Performance, Art, and Self-Determination since 1969

SITE Santa Fe; sitesantafe.org
Intergenerational exhibition of 100-plus artworks by 40-plus artists and collectives with Native American, Alaska Native, First Nations, Métis, and Inuit backgrounds; opening June 5.

Patti LaBelle

Route 66 Casino, Albuquerque; pattilabelle.com
Celebrating six decades of hits; 8 p.m. June 12; \$47-\$182.



Emerging from the fusion era, Spyro Gyra broke through in the mid-'70s, combining R&B and elements of pop and Caribbean music with jazz. The quintet brings its smooth-jazz arrangements to Albuquerque's KiMo Theatre April 12.

ON VIEW

Santa Fe

Artes de Cuba

1700-A Lena Street, 505-303-3138; artescubacom.com
Voces de la Tierra — Voices From the Earth; bas-relief sculpture by Lázaro Niebla; through May 15.

Art Vault Santa Fe

540 S. Guadalupe Street, 505-428-0681; artvault.thomafoundation.org
Ephemeral Acts, group show drawn from the Carl & Marilyn Thoma Foundation collection; through May.

Big Happy

1300 Luisa Street, #3A, 505-570-7287; bighappygallery.com
In Alchemy of Tenderness, paintings by Shelby Salmon; through April 11.

Daniel Cooney Fine Art

1600 Lena Street, Suite F5, 505-416-5452; danielcooneyfineart.com
In My Hand, drawings by Saul Bolasni (1916-2012); through May 2.

Ellsworth Gallery

215 E. Palace Avenue, 505-989-7900; ellsworthgallery.com
Moon Glow, paintings by Doug Coffin (Potawatomi/Creek); through April.

El Zaguán

545 Canyon Road, 505-983-2567; historicsantafe.org
Allocations: Self-Determination From Inside the Earth, Outward, work by conceptual artist Darrah Blackwater; through April 11.

Evoke Contemporary

550 S. Guadalupe Street, 505-995-9902; evokecontemporary.com
Small Talk, group show of small-scale formats; through April 18. *Louisa McElwain: Sweet Medicine*, landscapes; through April.

LewAllen Galleries

1613 Paseo de Peralta, 505-988-3250; lewallengalleries.com
Katherine Porter: Works on Paper, through April 18. *New American Lyrical Landscapes*, by Joseph DiGiorgio (1931-2000); through May 9.

smoke the moon

616½ Canyon Road, 978-578-4939; smokethemoon.com
Centrifuge, Lana Scholtz paintings; *Hook, Eye, Mouth*, group show; through May 3.

FOMA Gallery

333 Montezuma Avenue, 505-660-0121
Afterimage, photographic group show; through April 18.

Obscura Gallery

225 Delgado Street, 505-577-6708; obscuragallery.net
Virtuosos, Ansel Adams and Paul Caponigro photographs; through April 26.

The Owings Gallery

100 E. Palace Avenue, 505-982-6244; owingsgallery.com
Field Notes, multidisciplinary group show; through May 4.

Ripple Effect Gallery

Santa Fe Community College, 6401 Richards Ave, Room 723D
Lab for the Acoustic Window III, multisensory installation by Cary Cluett; through April.

ViVO Contemporary

725-A Canyon Road, 505-982-1320; vivocontemporary.com
Beyond Aesthetics, group show; through April 14.

Zane Bennett Contemporary Art

435 S. Guadalupe Street, 505-982-8111; zanebennettgallery.com
Balancing Acts: Janet Abrams, clay sculpture; through May 2.



Nüart Gallery holds an opening reception for painter Amy Hill on Friday, April 3.

MUSEUMS & ART SPACES

Santa Fe

Georgia O'Keeffe Museum

217 Johnson Street, 505-946-1000; okeeffemuseum.org; access-ok.gokm.org
A Circle that Nothing Can Break, O'Keeffe paintings; through June 1 • *Tewa Nangeh/Tewa Country*, contemporary works by artists, scholars, and culture bearers from the six Tewa Pueblos of Northern New Mexico; through September 7.

IAIA Museum of Contemporary

Native Arts
 108 Cathedral Place, 505-983-8900; iaia.edu/mocna
Stella Nall: Offerings from My Heart, multidisciplinary works; through June 14. *Paper Trails: Unfolding Indigenous Narratives*, works by Canadian and U.S. artists; through July 12.

Meow Wolf

1352 Rufina Circle, 505-395-6369; meowwolf.com
The House of Eternal Return, over 70 rooms of immersive, evolving exhibits.

Museum of Indian Arts and Culture

710 Camino Lejo, 505-476-1269; indianartsandculture.org
Essential Elements: Art, Environment, and Indigenous Futures, exploring the impact of climate change environmental destruction on Native homelands; through Sunday, April 5 • *Màatakuyuma*, work by Hopi photographer and filmmaker Duwawisioma (Victor Masayesva Jr.); April 19 • *Makowa: The Worlds Above Us*, group show; through August 17.

Museum of International Folk Art

706 Camino Lejo, 505-476-1204; moifa.org
Sandroing: Tracing Kastom in Vanuatu, sand drawings; through April 26 • *Appearances Deceive*, embroidery by Policarpio Valencia; through July 26 • *Truths Be Told: Artists Activate Traditions*, group show; January 17, 2027 • *Multiple Visions*, works by Alexander Girard.

New Mexico History Museum and Palace of the Governors

113 Lincoln Avenue, 505-476-5200; nmhistorymuseum.org
Chimayó: A Tradition of Faith, photographs of annual pilgrimages; through May 2027.

New Mexico Museum of Art

107 W. Palace Avenue, 505-476-5072; nmmuseum.org
O'Powa O'Meng: The Art and Legacy of Jody Folwell, ceramics; through June 21.

New Mexico Museum of Art Vladem Contemporary

404 Montezuma Avenue, 505-476-5062; nmmuseum.org/vladem-contemporary
Lucy R. Lippard: Notes From the Radical Whirlwind, objects tracing Lippard's career and contributions to the art world from the museum collection; through August 9.

Nuevo Mexicano Heritage Arts Museum

750 Camino Lejo, nmheritagearts.org
Grow and Flourish, recent acquisitions of work by youth and Spanish Market artists; through May 23 • *New Mexico Stories*, works from the collection; through December 12.

Santa Fe Botanical Garden

715 Camino Lejo, 505-471-9103; santafebotanicalgarden.org
 A living museum with trails through The Orchard Gardens, Ojos y Manos: Eyes and Hands, and Piñon-Juniper Woodland sections.

Wheelwright Museum of the American Indian

704 Camino Lejo, 505-982-4636; wheelwright.org
Emmi Whitehorse: Intimate Landscapes, paintings; through June 15.

Albuquerque

Indian Pueblo Cultural Center

2401 12th Street NW, 505-843-7270; indianpueblo.org
50 for 50: Indian Pueblo Cultural Center, 1976-2026, highlighting the center's history through Pueblo imagery and perspectives; through February 15, 2027. Weekend Native dance performances.

National Hispanic Cultural Center

1701 Fourth Street SW, 505-246-2261; nhccnm.org
What We Bring to the Table, works by NHC staff members; through June 7.

New Mexico Museum of Natural History and Science

1801 Mountain Road NW, 505-841-2800; nmnaturalhistory.org
Animal Armor: The Evolution of Armor in Dinosaurs and Prehistoric Animals, traveling exhibit of fossil replicas by Gaston Designs.

Tamarind Institute

UNM campus, 2500 Central Avenue SE, 505-277-3901; tamarind.unm.edu
Jaune Quick-to-See Smith: All My Relations, exhibit of the late artist's lithographs from 1980-2022, alongside works by artists influenced by her, including Jeffrey Gibson, Rose B. Simpson, Duane Slick, and Emmi Whitehorse; through April 10.

Española

Bond House Museum

706 Bond Street, 505-747-8535; facebook.com/sghsbondhousemuseum
Northern New Mexico Artist Invitational Exhibit; multidisciplinary group show; through May.

Corrales

INHABIT Galerie

4436 Corrales Road, Building 1; inhabitgalerie.com
METAL RULES!, group show of contemporary works; through May 2.

Los Alamos

Los Alamos History Museum

1050 Bathub Row, 505-662-6272; losalamoshistory.org
Secrets of Shangri-la: Enlisted Women of Project Y, photographs, uniforms, and letters documenting the contributions of WWII WACs serving in Los Alamos; through January 2027.

Taos

Harwood Museum of Art

238 Ledoux Street, 575-758-9826; harwoodmuseum.org
Pueblo Foodways; through May 30 • *Pursuit of Happiness: GI Bill in Taos*, works from the permanent collection on post-WWII artistic movements; through May.

Taos Art Museum at Fechin House

227 Paseo del Pueblo Norte, 575-758-2690; taosartmuseum.org
Sublime Suffering: Under the Sun, multidisciplinary works by Kaylie Boyle; through April 26 • *Nicolai Fechin: Figures, Nature and Expression*, paintings and drawings; through September 6.