

# PASA WEEK

compiled by Pamela Beach

ARTS. ENTERTAINMENT. CULTURE.

## FRIDAY 5/8

### Art Openings

#### Blue Rain Gallery

544 S. Guadalupe Street, 505-954-9902; blueraingallery.com  
Paintings by Helen K. Tindel; reception 5-7 p.m.

#### Horseshoe Gallery at Bishops Lodge

1297 Bishops Lodge Road; 505-577-5911  
*Gothic Lore*, figurative paintings by Andrea Peterson; reception 4-7 p.m.

#### Manitou Galleries

123 W. Palace Avenue, 505-986-0440  
*A Weekend with Maia Chávez Larkin*; the painter demonstrates her techniques 11 a.m.-4 p.m. today and Saturday.

#### Meyer Gallery

225 Canyon Road, #14, 505-983-1434; meyergallery.com  
*Above and on the Rio Grande*, landscapes by Ken Daggett; through May 21.

#### Nüart Gallery

670 Canyon Road, 505-988-3888; nuartgallery.com  
*Passage*, landscapes by Anne Kaferle; through May; reception 5-7 p.m.

#### Owen Contemporary

225 Canyon Road, 505-820-0807; owencontemporary.com  
*The Shape of Things*, works by ceramicists Frances Parker and Lisa Smith; through May 22; reception 4-6 p.m.

#### Thornwood Gallery

555 Canyon Road, 505-428-0279; thornwoodgallery.com  
Painting Demo Day with Pamela Sukhum; noon-5 p.m.

### Performances

#### Allison Davis

Paradiso; paradisosantafe.com  
Jazz singer, with Alex Murzyn, John Funkhouser, Russ Scanlon, Terry Burns, Mickey Patten, and Joe Chellman; 7:30 p.m.; \$17.64-\$22.95.

#### Angela Autumn

The Marigold Room; hotelglorietasantafe.com  
Singer-songwriter and multi-instrumentalist; singer-songwriter Kai Warrior opens; 8 p.m.; \$24.69.

#### At the Wake of a Dead Drag Queen

Santa Fe Playhouse; santafeplayhouse.org  
Terry Guest's play celebrating the enduring power of drag; 7:30 p.m. Fridays-Saturdays, 2 p.m. Sundays through May; \$17-\$74.

#### Chat Noir Cabaret

Los Magueyes; los-magueyes.square.site  
Pianist-vocalist Charles Tichenor; 6-9 p.m. Fridays and Saturdays; no cover.

#### CYRANO

Aspect Garson Studios, 1030 Midtown Calle Central; exodusensemble.com  
Exodus Ensemble's immersive reimagining of *Cyrano de Bergerac* as a high school rom-com set across senior year and the 15-year reunion; 7-9:30 p.m. today, Saturday, Sunday, Wednesday and Thursday; by donation; registration required; encores through May.



Utah-based painter Anne Kaferle, informed by her background in geology and scientific illustration, draws inspiration working plein air on the Colorado Plateau translating the shape-shifting subtleties of the surrounding landscapes into her works. Nüart Gallery holds an opening reception for Kaferle on Friday.

### Eureka Day

The Lab Theater; nmactorslab.com  
Jonathan Spector's satirical play about vaccine mandates; 7:30 p.m. Thursdays-Saturdays, 2 p.m. Sundays through May 17; \$21.50-\$41.50.

### Flamenco Fiesta de Santa Fe 2026

— **Flamenco Across the Ocean**  
Teatro Paraguas; teatroparaguasnm.org  
Chuscales and Mina Fajardo bring attention to oceanic plastic pollution; 7 p.m. today and Wednesday, 2 and 7 p.m. Saturday, 2 p.m. Sunday; \$30, discounts available.

### Flashback Prophets

Tumbleroot Alegria  
Vintage rock 'n' roll and R&B; 6-9 p.m.; no cover.

### Jimmy Stadler Band

Unit B; unitbsantafe.com  
Country rock singer-songwriter, percussionist Mark Clark, and bassist Dave Toland; 7 p.m.; \$22-\$34.

### Richard Smith

Gig Performance Space; gigsantafe.com  
Fingerstyle guitarist with a wide-ranging repertoire; 7:30 p.m.; \$31 in advance.

### TGIF recital

First Presbyterian Church; fpcsantafe.org  
Chancel Bell Choir; 5:30 p.m., doors 5:15 p.m.; donations accepted.

### Events

#### SWAIA Native Fashion Week

Eldorado Hotel & Spa ballrooms; swaia.org  
Native Creatives Market 10 a.m.-4 p.m.; including designs by Patricia Michaels (Taos Pueblo), Himikalas Pamela Baker (Squamish/Kwakiutl/Tlingit/Haida), Jontay Kahm (Plains Cree); Native Creatives Market Free admission. (See stories, pages 27-39)

#### Vista Grande Library Spring Book Sale

Vista Grande Public Library, Eldorado; vglibrary.org  
10 a.m.-6 p.m. today (Hello, Sweet Cream! vendor booth and afternoon surprise sale), \$10-per-bag sale 10 a.m.-3 p.m. Saturday.

#### Wheelwright Museum curators tour

704 Camino Lejo; wheewright.org  
Deborah C. Slaney describes the exhibit *Silver Honors Stone: The Work of Julian Lovato*; 11 a.m.-noon; \$10.

## SATURDAY 5/9

### Art Openings

#### Canyon Road Spring Art Festival

Corridorwide; visitcanyonroad.com  
Galleries host special exhibits and demonstrations as their artists share techniques with visitors; 11 a.m.-3 p.m.

### Daniel Cooney Fine Art

1600 Lena Street, Suite F5, 505-416-5452; danielcooneyfineart.com  
*Particular Voices: Portraits of LGBTQ+ Writers & Artists, 1985-2002*, photographs by Robert Giard (1939-2002); through June 6. Readings of selections from Giard's portrait subjects 2-4 p.m. Reception for graphic novelist Alison Bechdel 5-7 p.m. Thursday.

### FOMA

333 Montezuma Avenue, 505-660-0121  
*STOMA*, group photographic show; through June 5; reception 4-6 p.m.

### Green River Pottery

1710 Lena Street, 505-614-6952; greenriverpottery.com  
Stoneware selections; open house 10 a.m.-2 p.m.

### MoMo Santa Fe

143 Lincoln Avenue, 505-692-4157; momotaos.com  
*Align*, paintings and photographs by Ophelia Cornet; reception 4-6 p.m.

### New Mexico History Museum and Palace of the Governors

113 Lincoln Avenue, 505-476-5200; nmhistorymuseum.org  
*Printed at the Palace*, handbound books and works printed on 19th- and early 20th-century presses; public reception 1-3 p.m., by museum admission.

### Tierra Mar Gallery

225 Canyon Road, Suite 16, 505-372-7087; tierramargallery.com  
Turned-wood vessels by Keoni, paintings by Joel Nakamura, and blown-glasswork by Chris Johnson; 11 a.m.-3 p.m.

### Willison West Art Space

1189 Parkway, #E4, 505-238-6469; willisonwest.com  
Artist makers circle pop-up show 10 a.m.-3 p.m.

### Performances

#### The Dead Beatclub

Tumbleroot Alegria; tumblerootbreweryanddistillery.com  
B-52's tribute band, with tribute band Atomic Blondie and Lord Buckley's Church of the Living Swing (a tribute to the early 20th-century comedian performed by Rod Harrison); 8 p.m., doors 7 p.m.; \$15 advance in person, \$18.32 online, \$20 at the door.

#### Gamelan Encantada

Center for Contemporary Arts; gamelanencantada.net  
Percussion duo performing traditional Javanese music and music of Maria Siino, Lou Harrison, K.R.T. Wasitodiningrat, and Daniel Schmidt; 2 p.m.; \$10-\$20 at the door.

#### Hamlet

Great Hall at St. John's College, 1160 Camino de Cruz Blanca  
Student-produced performance of Shakespeare's tragedy in five acts; 6:30-10 p.m. today, Sunday, and Wednesday; free admission.

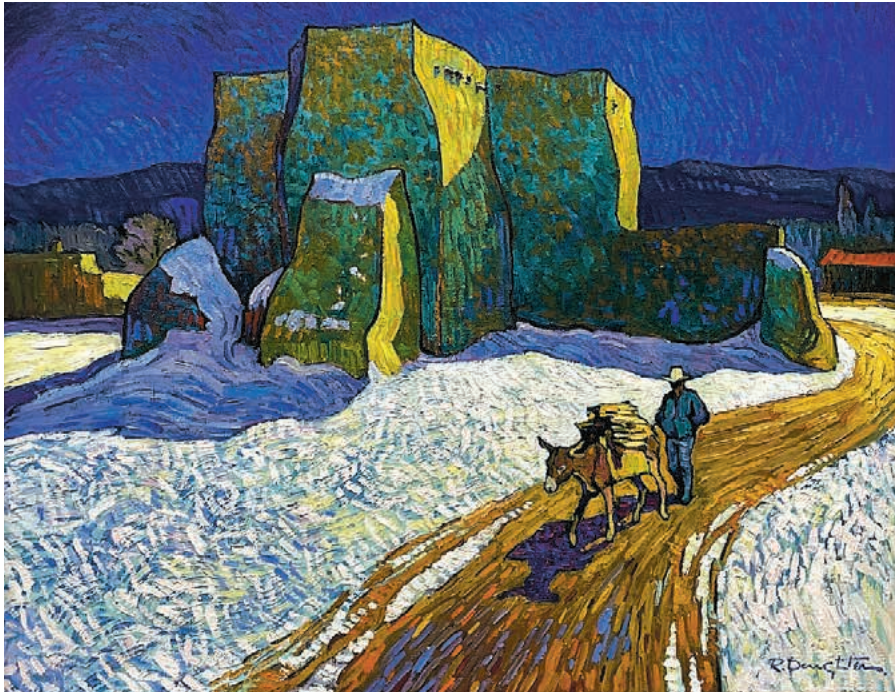
#### Juani de la Isla Quartet

Paradiso; amponconcerts.org  
The flamenco guitarist's cross-cultural ensemble; 7:30 p.m.; \$50-\$70.

## CALENDAR LISTING GUIDELINES

▶ Email press releases to [pambeach@sfnwmexican.com](mailto:pambeach@sfnwmexican.com) at least two weeks prior to the event date.

▶ Inclusion of free listings is dependent on space availability.



The Taos Art Museum opens *Land, Legacy and Perspective: Landscapes of Northern New Mexico* on Tuesday, May 12, displaying 30 works from the museum's permanent collection of celebrated painters inspired by New Mexico vistas, its vibrant light, and its cultural tapestry. Pictured is Robert Daughters' *Winter Reflections*.

### New Mexico Marimba Band Alliance

Keeping Together Brewery and Beverage Garden; [keepingtogether.com](http://keepingtogether.com)  
Dance party with eight marimba groups; 6 p.m. no cover.

### Santa Fe Symphony

Lensic Performing Arts Center; [santafesymphony.org](http://santafesymphony.org)  
Carl Orff's "Carmina Burana," with soprano Amy Owens, tenor Spencer Hamlin, and bass-baritone Ed Parks; 7 p.m.; \$36-\$120.

### Santa Fe Women's Ensemble

First Presbyterian Church; [sfwe.org](http://sfwe.org)  
Z. Randall Stroope's "Homecoming," with trumpeter Jan McDonald and pianist Bill Epstein; 3 p.m. today and Sunday; \$30 in advance, \$35 at the door, discounts available.

### SMOOTH

Santa Fe Plaza  
Free concert by Everett Lovato's Latin rock/Bay Area sound band, with percussionist Karl Perazzo and trumpeter Adolfo Acosta; noon-5 p.m.

### Tony McManus

Gig Performance Space; [gigsantafe.com](http://gigsantafe.com)  
Traditional Celtic music guitarist; 7:30 p.m.; \$31.

### Events

#### 86th annual Baile de Cascarones (Dance of Eggshells)

Santa Fe Community Convention Center  
Hosted by La Sociedad Folklórica de Santa Fe; 7 p.m.; \$15-\$25, ages 6-17 \$2, at the door. Fiesta attire encouraged.

#### Assassins, Spies and the Manhattan Project

New Mexico History Museum; [sfnm.co/tours](http://sfnm.co/tours)  
Docent-led walks focusing on local sites of clandestine activities; 10:45 a.m.-12:45 p.m.; \$30, ages 13-17 \$20, no charge for ages 12 and under.

#### Girls Inc. of Santa Fe designer resale event

Santa Fe Woman's Club  
Furniture, housewares, clothing, jewelry, and art; 9 a.m.-3 p.m. today and Sunday.

#### Poetry in Translation

Geronimo's Books  
Scott Nicolay and Christopher Watson read Spanish poems in English; 4 p.m.

### Spring Market

Kitchen Table; [thekitchentablesantafe.com](http://thekitchentablesantafe.com)  
Food; local artists; ceramics; jewelry; 11 a.m.-3 p.m.

### Shimmer Afield: LASER Panel

Peterson Gallery at St. John's College; [sciartsantafe.org](http://sciartsantafe.org)  
Held in conjunction with the exhibit *Shimmer: Vibrant Art/Science of New Mexico*; 3-5 p.m.

### SWAIA Native Fashion Week

Eldorado Hotel & Spa ballrooms; [swaia.org](http://swaia.org)  
Native Creatives Market 10 a.m.-6 p.m., including designs by Patricia Michaels (Taos Pueblo), Lauren Good Day (Mandan/Hidata/Arikara Nation), and Jamie Okuna (Luiseño/Wailaki/Okinawan/Shoshone-Bannock); free admission. A Taste of Native Fashion Gala 6 p.m., \$250. (See stories, pages 27-39)

## MOTHER'S DAY 5/10

### Performances

**Doug Montgomery**  
Rio Chama; [riochamasantafe.com](http://riochamasantafe.com)  
Great American Songbook selections; 6-9 p.m. Sundays and Mondays; no cover.

### Early Music Missouri

San Miguel Chapel; [earlymusicmissouri.net](http://earlymusicmissouri.net)  
Musick's Cordes duo Samuel Breene (baroque violin) and Jeffrey Noonan (baroque guitar); Renaissance and baroque selections; 4 p.m.; \$20 at the door, student discounts available.

### Michael Grosdsky & Friends

Center for Contemporary Arts  
Guitarist, with violinists Emmy Tisdell Lohr and Liana Austin, violist Allie Norris, cellist Dana Winograd, soprano Ingela Onstad, tenor-baritone Bear Schacht, guitarist Roberto Campocchi, and spoken-word performer Raymond Johnson; noon; \$15.

### Mother's Day concert

Federal Park, 100 S. Federal Place; [santafeconcertband.org](http://santafeconcertband.org)  
The Santa Fe Concert Band performs Broadway and operatic selections, and music by women composers; 2 p.m.

### Santa Fe Community Orchestra

Scottish Rite Temple; [sfco.org](http://sfco.org)  
Majestic Voices, season finale; music of Schumann and Saint-Saëns; 1:30 p.m.; free admission.

### Santa Fe Symphony

Lensic Performing Arts Center; [santafesymphony.org](http://santafesymphony.org)  
Carl Orff's "Carmina Burana," with soprano Amy Owens, tenor Spencer Hamlin, and bass-baritone Ed Parks; 4 p.m.; \$36-\$120.

### Santa Fe Women's Ensemble

First Presbyterian Church; [sfwe.org](http://sfwe.org)  
Z. Randall Stroope's "Homecoming," with trumpeter Jan McDonald and pianist Bill Epstein; 3 p.m.; \$30 in advance, \$35 at the door, discounts available.

### Events

#### Balanchine Finds His America

Collected Works Bookstore; [collectedworksbookstore.com](http://collectedworksbookstore.com)  
Author Elizabeth Kendall in conversation with Catherine Oppenheimer of NDINM; 4:30 p.m.

#### Third Annual Camino de los Burros

Basilica of St. Francis of Assisi  
A procession of donkeys stroll around the Plaza and surrounding streets to honor the equines' place in the region's history; 10 a.m. (begins and ends at the Basilica).

## MONDAY 5/11

### Events

#### Your Data Will Be Used Against You

Collected Works Bookstore; [collectedworksbookstore.com](http://collectedworksbookstore.com)  
Author Andrew Guthrie Ferguson in conversation with Christopher Moore of Santa Fe Institute; 6 p.m.

## TUESDAY 5/12

### Performances

#### Santa Fe Opera 2026: Music, Stories and Sneak Previews

President's Room at Rio Chama Prime Steakhouse; [sfnm.co/SFOPERA2026](http://sfnm.co/SFOPERA2026)  
Composer/pianist Joe Illick shares musical highlights and insights into the season's productions; 5:30-7 p.m.; \$30-\$40 in advance.

#### Speedbuggy USA

Tumbleroot Alegria; [sfnm.co/speedbuggy](http://sfnm.co/speedbuggy)  
Rockabilly; 7 p.m.; \$10 in advance at the door, \$12.74 in advance online, \$15 day of show.

### Events

#### The Indefinite Sublime — Tom McCarthy on *Moby-Dick*

Lensic Performing Arts Center; [lensic.org](http://lensic.org)  
The novelist-critic deconstructs Herman Melville's epic tale; 7:30 p.m. Register for free tickets online.

### Theatre Lovers Club

Unitarian Universalist Santa Fe, 107 W. Barcelona Road  
A discussion of *The Actor's Nightmare*, Horror Stories from the Stage; 6-7 p.m.; donations accepted.

## WEDNESDAY 5/13

### Performances

#### Hamlet

Great Hall at St. John's College, 1160 Camino de Cruz Blanca  
Student-produced performance; 6:30-10 p.m.; free admission.

#### Swing Shift

St. John's Methodist Church, 1200 Old Pecos Trail  
Big band-era arrangements; 6 p.m.; free admission.

## THURSDAY 5/14

### Art Openings

#### Dean's Gallery

Santa Fe Community College Fine Arts Center, 6401 Richards Avenue, 505-428-1501  
*Barens, Brayers, Squeegees & Ink*, works by students of the printmaking and book arts department; through May 17; reception 4-6 p.m.

### Visual Arts Gallery

Santa Fe Community College, 6401 Richards Avenue, 505-428-1501  
Annual School of Art and Design students' showcase; through July 23; reception 4-6 p.m.

### Performances

#### Beatles vs. Stones — A Musical Showdown

St. Francis Auditorium in the New Mexico Museum of Art; [sfnm.co/beatlesvsstones](http://sfnm.co/beatlesvsstones)  
Rolling Stones tribute band Jumping Jack Flash and rival Abbey Road Band in a mash-up duel; 7 p.m.; tickets start at \$100. Proceeds benefit the St. Vincent Hospital Foundation.

#### Ben Folds & A Piano

Lensic Performing Arts Center; [lensic.org](http://lensic.org)  
Pop music singer/songwriter/composer; 7:30 p.m.; \$71-\$136 (limited availability).

#### Karen Morgan

Unit B; [unitsantafe.com](http://unitsantafe.com)  
Stand-up comedian; 7 p.m.; \$34-\$45.

#### Out at Sea

Teatro Paraguas; [theatergrottesco.org](http://theatergrottesco.org)  
Physical-ensemble company Theater Grottesco presents Sławomir Mrożek's absurdist comedy; Thursdays-Sundays through May (\$20-\$35), pay what you wish on Thursdays. Opening night.

### Events

#### Artist and writers in conversation

Pie Projects Contemporary Art, 924-B Shoofly Street, 505-372-7681; [pieprojects.org](http://pieprojects.org)  
Jill O'Bryan, poet Rick Barot, and author Laura Paskus describe the intersection of art, nature, and poetry; 5-6 p.m. A co-presentation with the Santa Fe International Literary Festival;

#### A Look at Governors' Mansions Across the United States

New Mexico Governor's Mansion; [nmgmf.org](http://nmgmf.org)  
Free presentation; 10 a.m., by appointment; 505-476-2800, [kirstin.griffin@gsd.nm.gov](mailto:kirstin.griffin@gsd.nm.gov).

#### Renesan at CCA presentation

Center for Contemporary Arts; [renesan.org](http://renesan.org)  
Lecture-recital by Stweinyway artist Jacquelyn Helin; 1 p.m.; \$22. (See story, page 18)

#### Ulysses S. Cat and Other Animals I Have Known

Collected Works Bookstore, [collectedworksbookstore.com](http://collectedworksbookstore.com)  
Author Scott Simon reflects on how animals impact our lives with Hampton Sides, moderated by Anne Goodwin Sides; 6 p.m. A co-presentation with the Santa Fe International Literary Festival.

## OUT OF TOWN

### Albuquerque

#### Louis Hayes Quintet

Outpost Performance Space; [outpostspace.org](http://outpostspace.org)  
NEA Jazz Master percussionist; 7:30 p.m. Thursday, May 14; \$17.13-\$38.43.

### Taos

#### Stables Gallery

Taos Center for the Arts, 113 Paseo del Pueblo Norte; [tcataos.org](http://tcataos.org)  
Taos Abstract Artist Collective's annual exhibition; through May 16; opening Friday, May 8.

#### Taos Art Museum at Fechin House

227 Paseo del Pueblo Norte, 575-758-2690; [taosartmuseum.org](http://taosartmuseum.org)  
*Land, Legacy, and Perspective: Landscapes of Northern New Mexico*, paintings from the collection spanning the early to mid-20th century; through September 27; opening Tuesday, May 12.

#### Katya Grineva

Taos Art Museum at Fechin House; [taosartmuseum.org](http://taosartmuseum.org)  
Piano recital: Allegretto from Beethoven's Seventh Symphony; 5:30 p.m. Thursday, May 14; \$35 and \$45. Call 575-758-2690 for reservations. ◀

# ON VIEW

## Santa Fe

### 5. Gallery

2351 Fox Road, Suite 700, 505-257-8417; 5pointgallery.com  
*pointing towards the moon*, drawings by Christine Taylor Patten; through May 30.

### Artes de Cuba

1700-A Lena Street, 505-303-3138; artesdecuba.com  
*Voces de la Tierra — Voices From the Earth*; bas-relief sculpture by Lázaro Niebla; through May 15.

### art is gallery

419 Canyon Road, 505-629-2332; artisgallerysantafe.com  
*Surrounding Nature*, paintings by Judy Eckhart; through May.

### Art Vault Santa Fe

540 S. Guadalupe Street, 505-428-0681; artvault.thomafoundation.org

*Ephemeral Acts*, group show drawn from the Carl & Marilyn Thoma Foundation collection; through May.

### Aurelia Gallery

414 Canyon Road, 505-501-2915; aureliagallery.com  
*From Other Worlds*, paintings by Ammar Alnahhas; *Mosaics: Into the Light*, assemblages by Kristin Javier; through Sunday, May 10.

### Evoke Contemporary

550 S. Guadalupe Street, 505-995-9902; evokecontemporary.com  
Michael Scott: *Poems on Fire*; Mark Spencer: *Melting Pots*; paintings; through May 23.

### Kouri + Corrao

3213 Calle Marie, 505-820-1888; kouricorrao.com  
*Pressure Point*, work by ceramicist Grayson Fair; through June 13.

### Pie Projects Contemporary Art

924-B Shoofly Street, 505-372-7681; pieprojects.org  
Jill O'Bryan: *a new breath*, mixed-media drawings on paper; through June 6.

### Zane Bennett Contemporary Art

435 S. Guadalupe Street, 505-982-8111; zanebennettgallery.com  
*Formulation: Articulation*, prints by Josef Albers (1888-1976); through May 23.

## MUSEUMS & ART SPACES

## Santa Fe

### El Rancho de las Golondrinas

334 Los Pinos Road, 505-471-2261; golondrinas.org  
Living-history museum dedicated to the heritage and culture of 18th- and 19th-century New Mexico.

### Georgia O'Keeffe Museum

217 Johnson Street, 505-946-1000; okeeffemuseum.org; access-ok.gokm.org  
*A Circle that Nothing Can Break*, O'Keeffe paintings; through June 1 • *Tewa Nangeh/Tewa Country*, contemporary works by artists, scholars, and culture bearers from the six Tewa Pueblos of Northern New Mexico; through September 7.

### IAIA Museum of Contemporary Native Arts

108 Cathedral Place, 505-983-8900; iaia.edu/mocna  
2025–2026 IAIA BFA Exhibition: *Rooted in Relation*, works by emerging IAIA artists; through May 15 • *Stella Nall: Offerings from My Heart*, multidisciplinary works; through June 14 • *Paper Trails: Unfolding Indigenous Narratives*, works by Canadian and U.S. artists; through July 12.

### Museum of Indian Arts and Culture

710 Camino Lejo, 505-476-1269; indianartsandculture.org  
*Makowa: The Worlds Above Us*, group show; through August 17.

## Museum of International Folk Art

706 Camino Lejo, 505-476-1204; moifa.org  
*Appearances Deceive*, embroidery by Policarpio Valencia; through July 26 • *Truths Be Told: Artists Activate Traditions*, group show; January 17, 2027 • *Multiple Visions*, works by Alexander Girard.

## New Mexico Governor's Mansion

1 Mansion Drive, nmgmf.org  
Works by Gerald Cassidy, William Penhallow Henderson, Gustave Baumann, and more, on loan from museums. Public and private tours available. Contact Kirstin Griffin at 505-476-2800, Kirstin.Griffin@gds.nm.gov.

## New Mexico History Museum and Palace of the Governors

113 Lincoln Avenue, 505-476-5200; nmhistorymuseum.org  
*Chimayó: A Tradition of Faith*, photographs of pilgrimages; through May 2027 • *A Question of Power*, documentation of Sarah Jane White, Lucie A. Willie, and Molley Hogue's pivotal roles in halting the proposed Desert Rock coal-fired power plant on the Navajo Nation; through June 27, 2027. Walking Tours of Historic Downtown, weekly through November.

## New Mexico Museum of Art

107 W. Palace Avenue, 505-476-5072; nmartmuseum.org  
*O'Powa O'Meng: The Art and Legacy of Jody Folwell*, ceramics; through June 21.

## New Mexico Museum of Art Vladem Contemporary

404 Montezuma Avenue, 505-476-5062; nmartmuseum.org/vladem-contemporary  
*Lucy R. Lippard: Notes From the Radical Whirlwind*, objects tracing Lippard's career and contributions; through August 9.

## Nuevo Mexicano Heritage Arts Museum

750 Camino Lejo, nmheritagearts.org  
*Grow and Flourish*, recent acquisitions of work by youth and Spanish Market artists; through May 23 • *New Mexico Stories*, works from the collection; through December 12.

## Santa Fe Botanical Garden

715 Camino Lejo, 505-471-9103; santafebotanicalgarden.org  
A living museum, with trails through The Orchard Gardens, Ojos y Manos: Eyes and Hands, and Piñon-Juniper Woodland sections.

## Wheelwright Museum of the American Indian

704 Camino Lejo, 505-982-4636; wheelwright.org  
*Emmi Whitehorse: Intimate Landscapes*, paintings; through June 15 • *Silver Honors Stone*, work by the late Santo Domingo jeweler Julian Lovato (1925-2018); through October 17.

## Albuquerque

### Albuquerque Museum

2000 Mountain Road NW, 505-243-7255; cabq.gov/culturalservices/albuquerque-museum  
*High Desert Ballyhoo*, vintage photographs promoting tourism in New Mexico; through December 13.

### Indian Pueblo Cultural Center

2401 12th Street NW, 505-843-7270; indianpueblo.org  
*50 for 50: Indian Pueblo Cultural Center, 1976-2026*, highlighting the center's history through Pueblo imagery and perspectives; through February 15, 2027. Weekend Native dance performances.

### National Hispanic Cultural Center

1701 Fourth Street SW, 505-246-2261; nhccnm.org  
*What We Bring to the Table*, works by NHC staff members; through June 7.

## New Mexico Museum of Natural History and Science

1801 Mountain Road NW, 505-841-2800; nmnaturalhistory.org  
*Animal Armor: The Evolution of Armor in Dinosaurs and Prehistoric Animals*, traveling exhibit of fossil replicas by Gaston Designs.

## Cerrillos

### Box Studio & Sculpture Garden

3453 N.M. 14; boxstudiosculpturegarden.com  
*Painted Ponies*, sculpture by Kevin Box, inspired by origami artist Te Jui Fu; *ORIGAMI IN THE GARDEN*, sculpture by Jennifer Box and Kevin Box; through October.

## Corrales

### INHABIT Galerie

4436 Corrales Road, Building 1; inhabitgalerie.com  
*MIDNIGHT IN THE GARDEN*, group show of multidisciplinary works; through July 5.

## Española

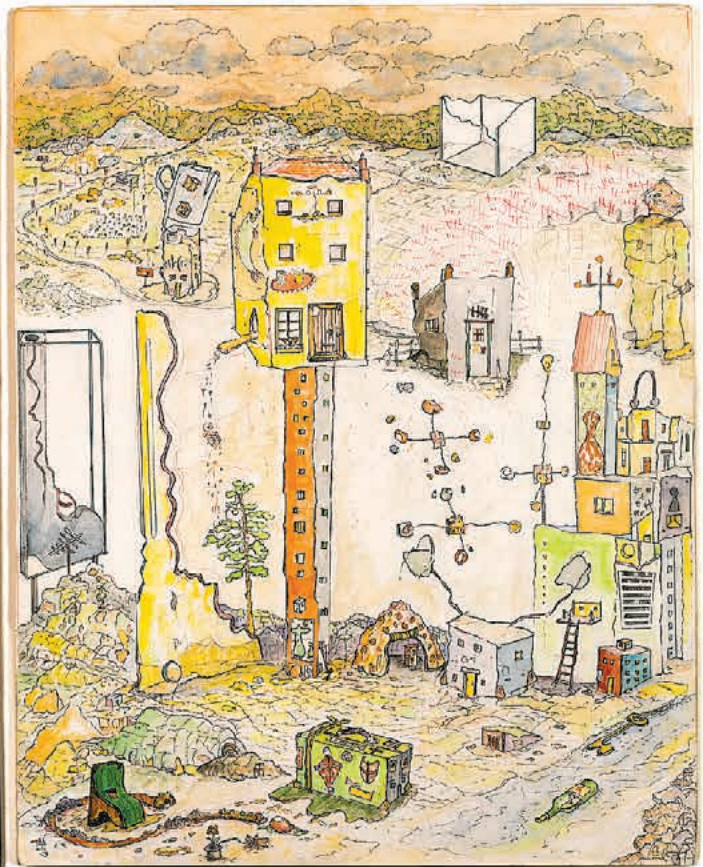
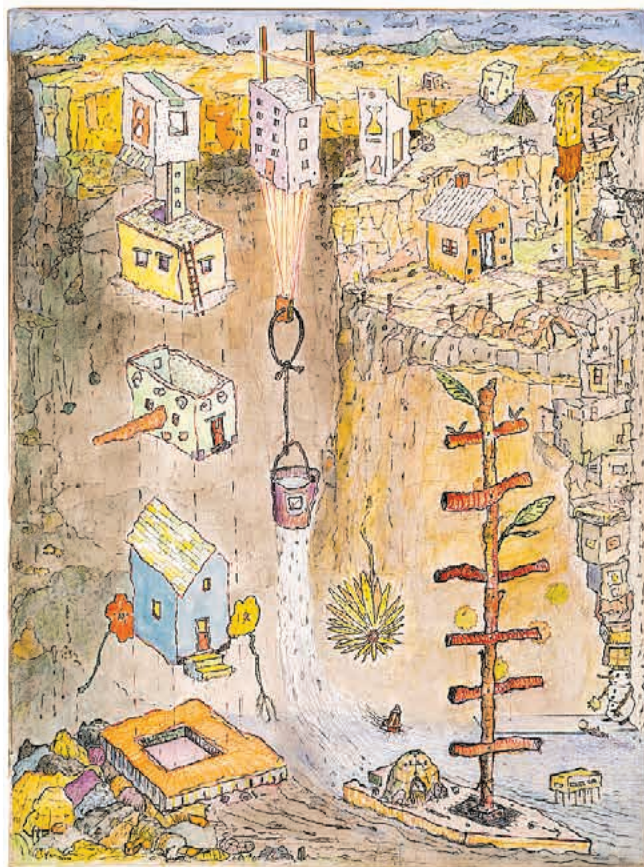
### Bond House Museum

706 Bond Street, 505-747-8535; facebook.com/sghsbondhousemuseum  
*Northern New Mexico Artist Invitational*, works by Steve Chaves, James Espinoza, Michelle Ferran, and Roger Montoya; through May. Free admission.

## Taos

### Harwood Museum of Art

238 Ledoux Street, 575-758-9826; harwoodmuseum.org  
*Pueblo Foodways*; through May 30 • *Pursuit of Happiness: GI Bill in Taos*, works from the permanent collection on post-WWII artistic movements; through May.



Santa Fe artist Craig Anderson is a lifelong student of Buddhism, Taoism, the teachings of Lao Tzu, Tantric art practice, and has an abiding appreciation of Native American practices and symbology. *ENIGMAS* is his current exhibit of mixed-media paintings on view at Cafe Pasqual's Gallery. The exhibition hangs through July 18. Above is *Travelogues [Homage to Mentor, William T. Wiley]*.

# PASA PLANNER

► A guide to performances & events for the weeks ahead



Veteran blues-rock guitarist and songwriter Mike Zito, having won the 2025 Blues Music Award for Blues Rock Album of the Year for *Life Is Hard*, hits the road in support of his fourth solo record, *Outside or The Eastside*, recorded in St. Louis, Missouri, where he was born and raised. AMP Concerts presents the showman on May 15 at Unit B.

## COMING SOON

### Santa Fe International Literary Festival

Santa Fe Community Convention Center; [sfm.co/litfest](http://sfm.co/litfest)

Authors, poets, and other literary figures, including U.S. Poet Laureate Arthur Sze, National Book Award finalist Deborah Jackson Taffa, and *Dark Winds* screenwriter and actor DezBaa; May 15-17; tickets vary by event; waitlists available.

### Dark Sky Gathering

Lester Jackson Campground, Pie Town; [darkskyland.us](http://darkskyland.us); [cdtcoalition.org](http://cdtcoalition.org)

The second annual event (May 15-17) brings together night-sky enthusiasts, community members, scientists, and advocates seeking to create an astro-wilderness corridor along the Continental Divide National Scenic Trail, as a protected refuge; organizers offer expanded programming, expert astronomy speakers, workshops, and hands-on stargazing experiences.

### *The Global Language of Headwear: Cultural Identity, Rites of Passage, and Spirituality*

Museum of Navajo Art & Culture, 301 W. Main Street 505-599-1533, Farmington

Traveling exhibit of hats and headdresses from 42 countries across five continents; opening May 15, through September 19. Admission is free.

### Katsura Sunshine's Rakugo World Tour

Center for Progress & Justice, 1420 Cerrillos Road; [sfm.co/katsurasunshine](http://sfm.co/katsurasunshine)

High-energy fusion of traditional Japanese 400-year-old storytelling and Western-style stand-up comedy; 7 p.m. May 15; \$35.

### Mike Zito

Unit B; [ampconcerts.org](http://ampconcerts.org)

Blues-rock guitarist-songwriter touring in support of his latest album *Outside or The Eastside*; 7 p.m. May 15; \$40-\$60.

### Christina Gomez y Los Cuates

Paradiso; [paradisosantafe.com](http://paradisosantafe.com)

Americana/country band, with lead vocalist Gomez, guitarist Caleb Garvin, keyboardist Jesse Lazcano, bassist Wade Knight, and percussionist Ralph Marquez; 7:30 p.m. May 15, doors 7 p.m.; \$17.64-\$22.95.

### Rakesh Chaurasia

Outpost Performance Space, Albuquerque; [outpostspace.org](http://outpostspace.org)

Grammy Award-winning bansuri flutist, joined by tabla player Amit Kavthekar; 7:30 p.m. May 15; \$17.04-\$38.29.

### Sixth Annual Tico Time Bluegrass Festival

Tico Time Riverside RV Resort, 20 Road 2050, Aztec; [ticotimebluegrass.com](http://ticotimebluegrass.com)

Lineup includes Yonder Mountain String Band, Old Crow Medicine Show, Darrell Scott and Rob Ickes, Big Richard, and Foggy Memory Boys; May 15-17; daily passes \$99 and \$119, three-day pass \$222, kids discounts available, early RV park entry May 14 \$252, campsites, glamping, and cabin tickets available. (See story, page 22)

### Crawdaddy Blues Fest

Madrid Railyard, Madrid; [crawdaddybluesfest.com](http://crawdaddybluesfest.com)

Four stages; twenty-plus acts, including Felix y los Gatos, Alex Maryol, Hillary Smith, Amanda Fish, Levi Platero, and CW Ayon; gates noon May 16 and 17; \$35 per day in advance, \$40 day of, ages 11 and under admitted free.

### Montage Music Society

Private venue; [montagemusicsociety.com](http://montagemusicsociety.com)

Violinist Stephanie Sant'Ambrogio, clarinetist Graeme Steele Johnson, cellist Walter Haman, and pianist Debra Ayers; music of Ben-Amots, Debussy, Jalbert, Stravinsky, and Wolosoff; 3 p.m. May 16; \$35 in advance; 505-795-1019.

### The Taos Chamber Music Group

Harwood Museum of Art;

Elevated Baroque, with Stephen Redfield, Katie Rietman, Kim Pineda, Kathlene Ritch, and Kathleen McIntosh; 5:30 p.m. May 16 and 17; \$24-\$30.

### Louis Hayes Quintet

Unit B; [santafemusiccollective.org](http://santafemusiccollective.org)

Veteran jazz percussionist; 7 p.m. May 16; \$35-\$50.

### Darrell Scott & Rob Ickes

Tumbleroot Alegria; [lensic360.org](http://lensic360.org)

Duo performance by the award-winning Americana artists; 7:30 p.m. May 16; \$35 in advance, \$40 day of show. (See story, page 22)

### Sandra Wong and Jon Sousa

Gig Performance Space; [gigsantafe.com](http://gigsantafe.com)

Folk fiddle and vocal duo; 7:30 p.m. May 16; \$31.

### Quintessential

Paradiso; [paradisosantafe.com](http://paradisosantafe.com)

Alex Murzyn on saxophone, Bob Fox on piano, Gordon Johnson on bass, Joe Chellman on drums, and vocalist Eliana Joy; 7:30 p.m. May 16; \$17.64-\$22.95.

### High Desert Winds Santa Fe Spring Concert

St. Francis Auditorium; [concordiasantafe.org](http://concordiasantafe.org)

The community wind ensemble presents a tribute to mothers and other prominent women, featuring music of Piazzolla, Holst, Thomas, and Brahms; 2 p.m. May 17; donations accepted.

### Coda Women's Chorus

Unitarian Universalist Santa Fe; [codasantafe.wordpress.com](http://codasantafe.wordpress.com)

The Power of Love, songs from the '40s through the present; 3 p.m. May 17; \$20.

### Eric Johnson

Lensic Performing Arts Center; [ampconcerts.org](http://ampconcerts.org)

Texas guitarist on his Texaphonic Tour, with percussionist Tal Bergman and bassist Daniel Kimbro; 7:30 p.m. May 17; \$44-\$66.

### Native Elements Art Festival & Market

Santa Fe Botanical Garden and Santa Fe Convention Center; [santafebotanicalgarden.org](http://santafebotanicalgarden.org)

Featuring approximately 160 Indigenous artists; opening celebration, auction, and Distinguished Achievement Award Ceremony 5:30 p.m. May 21, \$100; reception and VIP Night Market May 22, \$65; market and programming 9 a.m.-5 p.m. May 23, 10 a.m.-4 p.m. May 24, \$10 each day.

### Artrio-Two

Unit B; [unitbsantafe.com](http://unitbsantafe.com)

Pianist John Funkhouser, bassist Terry Burns, and percussionist Arnaldo Acosta; 7 p.m. May 21, doors 5:30 p.m.; \$20-\$35.

### Dovetail Orchestra

Jean Cocteau Cinema; [jeancocteaucinema.com](http://jeancocteaucinema.com)

The ensemble live-scores the 1926 silent film *The Adventures of Prince Achmed*; 7 p.m. May 21; \$15 at the door.

### The Green Man — Voice of the Forest

Paradiso; [paradisosantafe.com](http://paradisosantafe.com)

Spoken-word performance by poet-storyteller Timothy P. McLaughlin; opening set by singer-songwriter Nick Davidson; 7:30 p.m. May 21, doors 7 p.m.; \$20, seniors and students \$15.

### Joe King Carasco

Tumbleroot Alegria; [tumblerootbreweryanddistillery.com](http://tumblerootbreweryanddistillery.com)

Known as the King of Tex-Mex rock 'n' roll; Los Free Mexican Air Force opens; 7:30 p.m. May 21; \$15 in advance at the venue, \$18.32 in advance online, \$20 at the door.

## MAY

### New Mexico Wine Festivals

Balloon Fiesta Park, Albuquerque; Southern New Mexico State Fairgrounds, Las Cruces; [nmwine.com](http://nmwine.com)

Multiple stages for musical acts, and food vendors; May 23-25; tickets start at \$10.75.

### Sangre de Cristo Chorale

First Presbyterian Church; [sdchorale.org](http://sdchorale.org)

America's Bard, celebrating poet Walt Whitman, featuring Jeffrey Van's "A Procession Winding Around Me" and Whitman texts set to music by Clausen, Whitacre, Dello Joio, and Schumann; 4 p.m. May 23 and 24; \$30, students 17 and under admitted free.

### Ian Coury and Isaac Eicher

Gig Performance space; [gigsantafe.com](http://gigsantafe.com)

Mandolin duo blending jazz, Brazilian, and classical music; 7:30 p.m. May 23; \$30.

### Ghalia Volt

Unit B; [ampconcerts.org](http://ampconcerts.org)

Blues guitarist; \$33 in advance, \$38 day of show, \$55 premium seating; 7 p.m. May 27.

## Tab Benoit

KiMo Theatre, Albuquerque; [tumblerootalegria.com](http://tumblerootalegria.com); [amponconcerts.org](http://amponconcerts.org)

Delta blues singer-songwriter on his Soul of Swamp Tour 2026; 7:30 p.m. May 28 (Albuquerque), \$34-\$55; 7:30 p.m. May 30 (Santa Fe), \$51 in advance, \$56 day of show.

## ANTHOLOGY #2 *Premere*

New Mexico School for the Arts; [sfnm.co/anthology2](http://sfnm.co/anthology2)

Ramos Danza dancers perform original works by artistic director Fernando Ramos and guest choreographer Gaby Hernández, with music by Rajah Bose; 7 p.m. May 30, 5 p.m. May 31, 7 p.m. June 1; \$35-\$100.

## Ron Crowder Band

Unit B; [unitbsantafe.com](http://unitbsantafe.com)

Rock/pop/funk/soul singer-songwriter; 7 p.m. May 30; \$25-\$30.

## The Sign of the Four

The Ark Bookstore; [arkbooks.com](http://arkbooks.com)

Astrologer Heather Roan Robbins (see her weekly Star Codes column in the *Pasatiempo*) describes aspects of the five Uranus-Pluto trines occurring between July 2026 and May 2028; 2 p.m. May 31; \$37.87.

## JUNE

### Santa Fe Opera backstage tours

301 Opera Drive; 301 Opera Drive

One-hour, half-mile walks focusing on the architecture and history of the company; June 2-August 23; \$10, ages 6-22 admitted free. Reservations encouraged.

### *Indian Theater: Native Performance, Art, and Self-Determination since 1969*

SITE Santa Fe; [sitesantafe.org](http://sitesantafe.org)

Intergenerational exhibition of 100-plus artworks by 40-plus artists and collectives with Native American, Alaska Native, First Nations, Métis, and Inuit backgrounds; opening June 5.

### Phenomenomaly

Meow Wolf; [tickets.meowwolf.com](http://tickets.meowwolf.com)

Interactive experience throughout the exhibition, filled with mysterious characters, glowing creatures, giant puppets, and custom music; also, featuring local performers, each of whom will bring their own twist to the experience on select dates; no two performances are the same; 1-5:30 p.m. June 5-August 9; \$32-\$39.

### New Mexico Shakespeare Festival

Veteran's Memorial Park, Albuquerque; [nmshakes.org](http://nmshakes.org)

*Julius Caesar* June 5-7, 18-20, 26-28, July 2, 5, and 10;

*The Winter's Tale* June 12-14, 19, 21, 25, 27, July 3, 9, and 11; free admission.

### *Lili Elbe: Love, Art and Otherness* with Desirée Mays

Santa Fe Woman's Center; [guildsofsfo.org](http://guildsofsfo.org)

Santa Fe Opera's resident speaker introduces the American premiere of the two-act opera by composer Tobias Picker and librettist Aryeh Lev Stollman detailing the life of the Danish painter and pioneering transgender surgery recipient; 5-7 p.m. June 9; \$10-\$20.

### Clive Carroll

Unit B; [unitbsantafe.com](http://unitbsantafe.com)

British acoustic guitarist blending classical, folk, blues, and jazz; 7 p.m. June 10; \$25-\$40.

### Indigenous Foodways Festival

Museum of Indian Arts & Culture; [indigenousfoodwaysfestival.com](http://indigenousfoodwaysfestival.com)

Native chefs, farmers, and cultural leaders celebrate culinary traditions through storytelling, cooking demonstrations, tastings, hands-on classes, and conversations; participants include Justin Pioche (Salt Clan Diné), Ray Naranjo (Santa Clara Pueblo), Crystal Wahpepah (Kickapoo); 10 a.m.-6 p.m. June 20; \$15, \$5 for kids, add-on experiences start at \$25. General admission includes all-day admission to the Museum of Indian Arts & Culture.

### Opera InSight 2026 seminar

UNM's Hodgin Hall; [sfnm.co/insight2026](http://sfnm.co/insight2026)

Psychiatrist Don Fineberg, mezzo-soprano Olga Perez Flora, and tenor James Flora explore the psychological themes of the season's productions; Jamie Flora and Olga Perez Flora perform selected excerpts from *Madama Butterfly*, *Eugene Onegin*, *The Magic Flute*, *Rodelinda*, and *Lili Elbe*; morning session 9 a.m., afternoon session 1:45 p.m. June 26; \$125; early registration through May 15 \$115.

### Eddy Daniels

Unit B; [santafemusiccollective.org](http://santafemusiccollective.org)

Jazz clarinetist-saxophonist, featuring pianist Lee Musiker, with bassist Gordon Johnson, and percussionist John Trentacosta; 7 p.m. June 26 and 27; \$49.51-\$65.45.

## JULY

### Santa Fe Wine Festival

El Rancho de las Golondrinas; [golondrinas.org](http://golondrinas.org)

Samples and glasses of selections from New Mexico-based wineries; plus, artisan vendors, food trucks and vendors; beer and apple cider available; noon-6 p.m. July 4 and 5; \$9.70-\$20.33, VIP \$86.20, ages 12 and under no charge.

### Kipp Bentley and The Night Letter Orchestra

Unit B; [unitbsantafe.com](http://unitbsantafe.com)

Celebrating the release of his new record *Night Letter*, with vocalist Nathan Dunton, pianist James Raymond, bassist Jon Gagan, percussionist Mark Clark, violinist Karina Wilson, and guitarists Jon Graboff and Jono Manson; 7 p.m. July 11.

### James McMurtry

The Bridge at Santa Fe Brewing Company; [lensic360.org](http://lensic360.org)

Touring in support of *The Black Dog & the Wandering Boy*; 7 p.m. July 16; BettySoo opens; \$32.50 in advance, \$37.50 day of show.

### Rufus Wainwright

Journal Theatre at the National Hispanic Cultural Center, Albuquerque, [amponconcerts.org](http://amponconcerts.org); [lensic360.org](http://lensic360.org)

The pop singer-songwriter performs solo in New Mexico on his world tour; 7:30 p.m. July 17, in Albuquerque, \$59-\$79; 7:30 p.m. July 18, in Santa Fe, \$59-\$89.

## AUGUST

### Santa Fe Beer Festival

El Rancho de las Golondrinas; [golondrinas.org](http://golondrinas.org)

Local craft beer vendors and food trucks; noon-6 p.m. August 8; \$9.70-\$15.01, VIP \$43.70, ages 12 and under free admission.

### Black Joe Lewis & The Honeybears

Tumbleroot Alegria; [amponconcerts.org](http://amponconcerts.org)

American blues, funk and soul artist influenced by Howlin' Wolf and James Brown; 7:30 p.m. August 13; \$26 in advance, \$31 day of show.

### Santa Fe Opera Apprentice Scenes

301 Opera Drive; [sfnm.co/SFOapprentices2026](http://sfnm.co/SFOapprentices2026)

Fully staged performances by apprentice singers in a concert format accompanied by piano 8 August 16, featuring the Santa Fe Opera Orchestra 8 p.m. August 23; \$5-\$32.

### Songs & Stories: Ray Wylie Hubbard, Eliza Gilkyson, and Jimmie Dale Gilmore

Albuquerque, Santa Fe, and Taos; [lensic360.org](http://lensic360.org)

Veteran songwriters; 7:30 p.m. August 28, KiMo Theatre; 7:30 p.m. August 29, Lencis Performing Arts Center; 7 p.m. August 30, The Mothership; \$42-\$73.

## SEPTEMBER

### 102nd Burning of Zozobra

Fort Marcy Park; [burnzozobra.com](http://burnzozobra.com)

Themed The Tyranny of Gloom vs. the Spirit of '76 celebrates America's 250th anniversary September 4; \$30 discounted general admission tickets available online through September 3, ages 10 and under admitted free, advance discounts available.

### 32nd Annual Telluride Blues & Brews Festival

[tellurideblues.com](http://tellurideblues.com)

Including Jon Batiste, Tab Benoit, Samantha Fish, Taj Mahal & Keb' Mo', Charlie Musselwhite & GA-20, and the Marcus King Band; brewers' showcase, tasting sessions, and beer-pairing dinner; September 18-20; day passes \$110 and \$115, beer tastings \$30, camping passes \$70 and \$80.

### Mavis Staples and Nathaniel Rateliff

Santa Fe Opera; [lensic360.org](http://lensic360.org)

Rocker Rateliff performs solo, followed by Gospel Music Hall-of-Famer Staples and her band; plus, some duo performances; 7 p.m. September 19; \$56-\$146.

### TajMo

Santa Fe Opera; [lensic360.org](http://lensic360.org)

Taj Mahal and Keb' Mo' on their *Room On The Porch* tour; 7 p.m. September 20, gates 6 p.m.; \$44-\$99.



Katsura Sunshine makes a tour stop in Santa Fe on May 15 for a performance at the Center for Progress & Justice. He completed his traditional apprenticeship in Rakugo comic storytelling under Rakugo Master Katsura Bunshi VI in 2011 and currently performs in New York City and Japan. *The New York Times* calls Sunshine "A master storyteller!" while *The New Yorker* writes "There is only one Sunshine!"