

PASA WEEK

ARTS AND ENTERTAINMENT CALENDAR
April 14-20, 2023

CALENDAR LISTING GUIDELINES

- Submit Pasa Week calendar events via email to pambeach@sfnewmexican.com at least two weeks prior to the event date.
- Provide the following: event title, date, time, venue, brief description, ticket prices, contact phone number, and web address.
- Inclusion of free listings is dependent on space availability.

CALENDAR COMPILED BY
PAMELA BEACH

FRIDAY 4/14

Gallery and Museum Openings

Aurelia Gallery

414 Canyon Rd., 505-501-2915

The Tipping Point, paintings by Scooter Morris; through May; reception 5-7 p.m.

Heidi Loewen Fine Art

315 Johnson St., 505-988-2225

Celebrate Spring, porcelain vessels by the gallerist; through April 21; reception 5-7 p.m.

SITE Santa Fe

1606 Paseo de Peralta, 505-989-1199

Going With the Flow: Art, Actions, and Western Waters, group show; through July; reception 5-9 p.m. Hourly tours 10 a.m.-4 p.m. on Saturday; sitesantafe.org.

In Concert

Black Mesa Brass Quintet

First Presbyterian Church, 208 Grant Ave., 505-982-8544

John Williams' *Star Wars*, Gershwin's *Porgy & Bess* sampler, and Irving Berlin's *Puttin' on the Ritz*; 5:30 p.m., doors 5:15 p.m.; donations accepted.

The Manhattan Transfer

Lensic Performing Arts Center, 211 W. San Francisco St.

Celebrating fifty years of pop, jazz, R&B, and a cappella performances; 7:30 p.m.; \$45-\$69; 505-988-1234, lensic.org/events.

Theater/Dance

EntreFlamenco

El Flamenco de Santa Fe, 135 W. Palace Ave., 505-209-1302

Featuring Antonio Granjero and Estefania Ramirez; 6:15 p.m. Fridays and Saturdays through June 24; \$25-\$43; entreflamenco.com/tickets.

Hubba Hubba

Santa Fe Playhouse, 142 E. De Vargas St., 505-988-4262

Vignettes by puppeteers Alex and Olmsted; 11 a.m. and 7:30 p.m. today, 2 and 7:30 p.m. Saturday; \$20-\$75; santafeplayhouse.org.

Todd Barry

Jean Cocteau Cinema, 418 Montezuma Ave., 505-466-5528

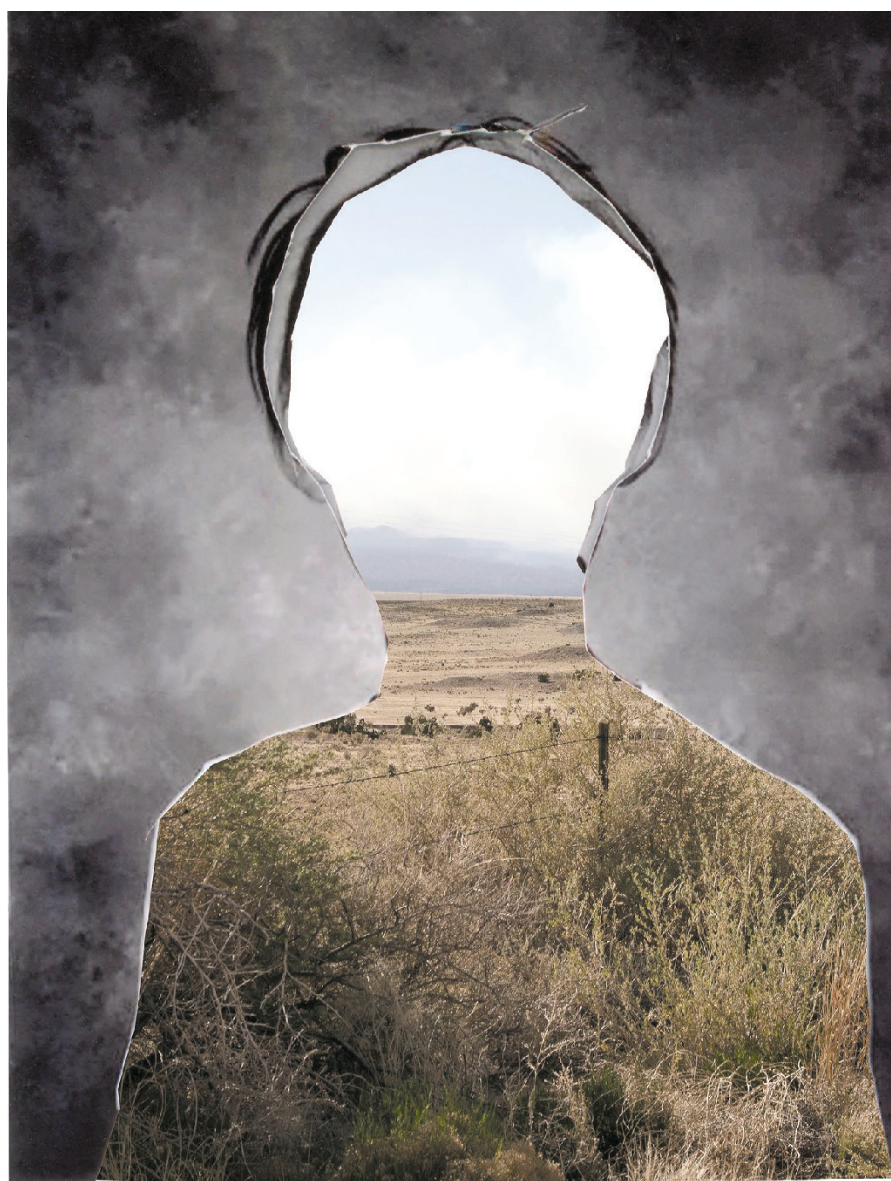
Stand-up comedian; 6:30 and 9 p.m.; \$35-\$100; jeancocteaucinema.com. (See story, Page 18)

Books/Talks

2023 Native Arts Speaker Series

Museum of Indian Arts & Culture, 710 Camino Lejo, 505-476-1269

Grounded in Clay Conversations, in conjunction with the MIAC exhibition. UNM prof. Clarence Cruz and Samuel Villarreal Catanach, Pojoaque's Tewa Language Department director; 1 p.m.; by museum admission. Reservations at sarsf.info/convos.



Strata Gallery (stratagalleriesantafe.com) shows photographs by Megan Jacobs through April 21.

Bruce Moss

Collected Works Bookstore, 202 Galisteo St., 505-988-4226
The author discusses *A Death in Florence*; 6 p.m.

The Nonviolence Movement in Iran

Unitarian Universalist Santa Fe, 107 W. Barcelona St.
Presentation and Q&A with Iranian Sufi monk and peace activist Moji Agha; 6:30 p.m.

Events

Pottery demonstration

Andrea Fisher Fine Pottery, 100 W. San Francisco St., 505-986-1234

Santo Domingo Pueblo artist Thomas Tenorio illustrates his techniques; noon-4 p.m.

Nightlife

Delbert Anderson Jazz Trio

La Fiesta Lounge at La Fonda, 100 E. San Francisco St., 505-982-5511

Featuring Natalie Benally; 7-9 p.m.; no cover.

Chat Noir Cabaret

Los Magueyes, 31 Burro Alley, 505-992-0304

Pianist-vocalist Charles Tichenor; 6 p.m.; no cover.

Freddie Swartz

Caffe Greco, 223 Canyon Rd., 505-820-7996

Guitarist-vocalist; 5-8 p.m.; no cover.

Half-A-Shipwreck

Honeymoon Brewery, 907 W. Alameda St., 505-303-3139

Indie-rock band; 8-11 p.m.; no cover.

Robert Fox Trio

Club Legato, 125 E. Palace Ave., 505-988-9232

Jazz pianist, with percussionist John Trentacosta and bassist Cyrus Campbell; 6-9 p.m.; no cover.

Sato & ILLUSTR8

Boxcar, 530 S. Guadalupe St., 505-988-7222

Spinning house; 9 p.m.; \$5 cover.

SATURDAY 4/15

Gallery and Museum Openings

New Mexico Museum of Art

107 W. Palace Ave., 505-476-5072

Manuel Carrillo: Mexican Modernist, photographic exhibition; through Feb. 4, 2024.

Opera in HD

The Met Live in HD

Lensic Performing Arts Center, 211 W. San Francisco St.

Strauss' *Der Rosenkavalier*, featuring Lise Davidsen, Samantha Hankey, and Erin Morley; 10 a.m., 6 p.m. encore; \$22-\$28; 505-988-1234, lensic.org/events.

Classical Music

Ars Nova Singers

St. Francis Auditorium, 107 W. Palace Ave.

A cappella choral ensemble; *Reflections*, music of William Byrd, Gustav Mahler, Tom Morgan, and Divya Maus; 7:30 p.m.; \$30, students \$10; arsnovasingers.org/production/reflections.

In Concert

Jasmin Williams and the John Rangel Trio

Dave's Jazz Bistro, Santa Fe Cooking School, 125 N. Guadalupe St., 800-982-4688

Jazz ensemble; 6:30-9:30 p.m. dinner show; \$82.50 and \$165; santafeschoolofcooking.com.



Santa Fe Public Library Southside Branch (6599 Jaguar Dr.) holds a reception on Tuesday for Óscar Becerra-Mora. Above, detail of *Xólotl: Dios Perro*

SubDocta

Meow Wolf, 1352 Rufina Circle, 505-395-6369
DJ Preston Charles' West Coast wobble;
doors 9 p.m.; \$22; tickets.meowwolf.com.

Events

Baile de los Cascarones

Santa Fe Community Convention Center, 201 W. Marcy St.
Traditional folk dance demonstrations and lessons,
with music by Los Reflections; 7-11 p.m.; \$12;
couples \$20; ages 6-17 \$2; cash or checks only
at the door; fiesta attire encouraged.

Feria Southside Mercado

Fraternal Order of Police, 3300 Calle Maria Luisa
Thirty-plus vendors, family-friendly activities, music,
and performance by Danza Folklórica; 10 a.m.-2 p.m.;
free admission; feriasouthsidemercado.com.

Nightlife

The Barlow

Boxcar, 530 S. Guadalupe St., 505-988-7222
Outlaw-country band; 9 p.m.; \$5 cover.

Bill Hearne

La Fiesta Lounge at La Fonda, 100 E. San Francisco St.,
505-982-5511
Americana singer-songwriter; 6:30 p.m. today
and Sunday; no cover.

Dirty Brown Jug Band

The Mine Shaft Tavern, 2846 NM 14, 505-473-0743
Ten-year-anniversary party; 7 p.m.; no cover.

Robert Fox Trio

Club Legato, 125 E. Palace Ave., 505-988-9232
Jazz pianist, with percussionist John Trentacosta
and bassist Cyrus Campbell; 6-9 p.m.; no cover.

Sky Wilson

Caffe Greco, 223 Canyon Rd., 505-820-7996
Jazz pianist; 5-8 p.m.; no cover.

SUNDAY 4/16

Classical Music

Santa Fe Symphony Orchestra

Lensic Performing Arts Center, 211 W. San Francisco St.,
505-988-1234

One Love, One Planet, featuring Samuel Abraham
Vargas Teixeira performing Samuel Coleridge-
Taylor's Violin Concerto in G Minor, Op. 80;
4 p.m.; \$22-\$80; boxoffice.santafesymphony.
org/7961/7962. (See story, Page 14)

In Concert

Bizzy Bone

Tumbleroot Brewery & Distillery, 2791 Agua Fria St.,
505-393-5135
Rapper Bryon Anthony McCane II's *I'm Busy Tour*;
8 p.m.-midnight; \$30 and \$35; holdmyticket.com/
tickets/409911.

Book/Talks

Max Early and David Meischen

Teatro Paraguas, 3205 Calle Marie
The poets read from their collections; 5 p.m.;
no charge.

Santa Fe Distinguished Lecture Series

Distinguishedlectures.com
Hiding During the Holocaust, with Shulamit
Reinartz of Hadassah-Brandeis Institute;
11 a.m. webinar; ron@tolerancestudies.org;
no charge.

Santa Fe Free Thinkers' Forum

Unitarian Universalist Santa Fe, 107 W. Barcelona Rd.
Rev. Kimi Floyd Reisch suggests what to do about
The Slow Death of Public Education; 8:30 a.m.;
no charge; 505-438-6265, meetup.com/
freethinkersforum.

Nightlife

Doug Montgomery

Rio Chama, 414 Old Santa Fe Trail, 505-955-0765
Great American Songbook; 6-9 p.m. Sundays
and Mondays; no cover.

High City Jazz Quartet

Chile Line Brewery, 204 N. Guadalupe St., 505-982-8474
Plus, open jams; 5-7 p.m. Sundays; no cover.

MONDAY 4/17

Books/Talks

Myth and The Flying Dutchman

Santa Fe Woman's Club, 1616 Old Pecos Trail
A presentation by Santa Fe Opera's resident speaker
Desirée Mays on the real and supernatural elements
of the Flying Dutchman legend; 6 p.m.; \$10 and \$15;
santafeoperaguild.org/events.

Southwest Seminars

1501 Paseo de Peralta, 855-825-9876
UNM anthropology prof. Russell Greaves describes
40 years of experience in the field; 6 p.m.; \$20;
505-466-2775, southwestseminars.org.

Nightlife

Doug Montgomery

Rio Chama, 414 Old Santa Fe Trail, 505-955-0765
Great American Songbook; 6-9 p.m.; no cover.

TUESDAY 4/18

Gallery and Museum Openings

Santa Fe Public Library Southside Branch

6599 Jaguar Dr., 505-955-2820
Xólotl: Dios Perro, papier-mâché sculpture
installation by Óscar Becerra-Mora; through Dec. 4;
reception 6-7 p.m.

In Concert

Piano Battle

Lensic Performing Arts Center, 211 W. San Francisco St.
Andreas Kern and Paul Cibis; music of Chopin,
Liszt, and Debussy; 7:30 p.m.; \$29-\$59;
505-988-1234, lensic.org/events.

Books/Talks

Stories from the Stage

Teatro Paraguas, 3205 Calle Marie
Actors Leslie Harrell Dillen, Danielle Reddick,
and Karen Ryan; 6-7 p.m.; donations accepted;
theatresantafe.org/rsvp.

WEDNESDAY 4/19

Outdoors

Randall Davey Audubon Center & Sanctuary

1800 Upper Canyon Rd., 505-983-4609
Trails through habitats and plant zones ranging
from meadows to Ponderosa Pine forests;
open 8 a.m.-4 p.m.; randalldavey.audubon.org.

Nightlife

Instrumental jazz jam

Club Legato, 125 E. Palace Ave., 505-988-9232
Robert Fox Trio hosts; 6-9 p.m.; no cover.

THURSDAY 4/20

In Concert

Chris Jonas' Music from the Deserts

San Miguel Chapel, 410 Old Santa Fe Trail
The saxophonist's quintet: Jerry Weimer on
clarinet, Leroy Medina on bassoon, Cyrus Campbell
on bass, and Dan Cuatt on drums. Jonas' trio:
Jeremy Bleich on bass and Milton Villarrubia III
on drums; 7:30 p.m.; \$10-\$30 sliding scale;
sanmiguelchapelsantafe.org.

Theater/Dance

SpaceMob and the Quest for the Neverending Nug

Fruit of the Earth Natural Health, 909 Early St.,
505-820-0058
Multimedia, hip-hop musical; 7 p.m.;
tickets start at \$10.

Books/Talks

Christine Barker

Collected Works Bookstore, 202 Galisteo St.,
505-988-4226
The writer discusses her memoir, *Third Girl
from the Left*; 6 p.m.

Events

Angels Dine Out

Local restaurants and bars
Forty-plus eateries donate 25 percent of sales
to benefit Kitchen Angels; kitchenangels.org.

Nightlife

Alex Murzyn Quartet

Club Legato, 125 E. Palace Ave., 505-988-9232
Jazz saxophonist, with John Trentacosta, Cyrus
Campbell, and Robert Fox; 6-9 p.m.; no cover.

4/20 Party

Tumbleroot Brewery & Distillery, 2791 Agua Fria St.,
505-393-5135
The Boomroots Collective, Iyah, and DJ Dynamite
Sol; 7:30 p.m.; no cover.

Jazz jams

La Fiesta Lounge at La Fonda, 100 E. San Francisco St.,
505-982-5511
Michael Gutierrez and Rhonda Head,
7-9 p.m.; no cover.

Lizzete de la Paz

Caffe Greco, 223 Canyon Rd., 505-820-7996
Guitarist-vocalist; 5-8 p.m.; no cover.

OUT OF TOWN

Albuquerque

Tamarind Institute open house

2500 Central Ave., SE, 505-277-3901
Workshop printing demonstrations, gallery tour,
and *Aftereffects* closing reception and workshop;
2-5 p.m. Saturday, April 15; no charge;
tamarind.unm.edu/news-events.

From Decimas to Spoken Word

516 ARTS, 516 Central Ave. SW, 505-242-1445
Literary event with UNM prof. Eleuterio Santiago
Díaz and Brazilian poets Mel Adún and Guellwaar
Adún; 3 p.m. Sunday, April 16; in conjunction
with the exhibit *Artists as Knowledge Carriers*.

Placitas

Placitas Artists Series

Las Placitas Presbyterian Church, Exit 242
Guitarist Aniello Desidrio performs Stephen Goss'
Verismo, based on themes from Puccini, Mascagni,
Rossini, and Verdi operas; 3 p.m. Sunday, April 16;
\$25; placitasartistsseries.org.

Taos

SOMOS Presents 2023 Poetry Month

SOMOS Salon & Bookshop, 108-B Civic Plaza Dr.,
575-758-0081
Reading by poet Paul Tran; 5:30 p.m. Friday,
April 14; \$8 and \$10. *Tell It Like It Is*, workshop
led by Tran; 9 a.m.-noon Saturday, April 15;
\$75 and \$85; somostaos.org.

PEOPLE WHO NEED PEOPLE

Actors

Tri-M Productions' Kinky Boots auditions

Contact Marilyn Barnes, 505-670-4854, to schedule
slots held 5:30-9 p.m. April 21 and 3-6:30 p.m.
April 23, at Unitarian Universalist Santa Fe,
107 W. Barcelona St.; June 15-25 run;
trimsantafe.org.

Artists

Arte de Descartes XXIII

Artists working in recycled materials sought
for the Taos-based art show held Aug. 26-Sept. 4.
Prospectus at whollyrags.org; 5 p.m. Aug. 1
deadline. Call Melissa for more information,
575-751-9862.

Governor's Awards for Excellence in the Arts

Online nominations sought for New Mexico artists,
businesses, nonprofits, foundations, or individuals
making significant contributions to the arts; 4 p.m.
May 5 deadline; nmarts.org/governors-arts-awards.

Community

Folk Art Flea Donation Day

Museum of International Folk Art, 706 Camino Lejo
Accepting gently used folk art items for the
May 6 Folk Art Flea fundraiser; 11 a.m.-2 p.m.
Saturdays, April 15 and 22, in the back parking lot.
Call 505-476-1201 for other arrangements.

People for Native Ecosystems

Volunteers needed to help with feeding prairie dogs
about 2 hours a week. Call Pat at 505-988-1596.

SFHS choir yard sale

Santa Fe High School offers \$25 yard-sale tables
for its choir fundraiser, held 9 a.m.-2 p.m. April 29,
at Ivan Head upper parking lot. Text Jill for details,
505-690-0433.

Filmmakers

Santa Fe Film Institute grants and scholarships

Applications sought for regional grants,
Imogene Hughes Scholarship for college students,
and SFFI High School Scholarship; apply at
santafefilmintitute.org by June 7. Email grants@
santafefilmintitute.org with questions. ◀

AT THE GALLERIES

Santa Fe

5. Gallery

2351 Fox Rd., Suite 700, 505-257-8417

Sculpture by James Sterling Pitt; through May 27.

Axle Contemporary

Look for the mobile gallery outside the Farmer's Market, 1607 Paseo de Peralta, 505-670-5854/505-670-7612

Post Fiesta Wares, papier mâché installation by Rick Phelps. Visit axleart.com for van locations through May 28.

Eye on the Mountain Art Gallery

222 Delgado St., 928-308-0319

Patterns of Light & Growth, work by ceramist Anne C. Ray and watercolorist Rosabeth Link; through April 29.

Foto Forum Santa Fe

1714 Paseo de Peralta, 505-470-2582

The Land of Illustrious Men, photographs by Daniel Ramos; through May 26.

Hecho Gallery

129 W. Palace Ave., 505-455-6882

Prints and paintings by Enrique Flores; through April.

Nüart Gallery

670 Canyon Rd., 505-988-3888

Immersive Fields, paintings by Lloyd Martin and Willy Bo Richardson; through April 23.

Pie Projects

924-B Shoofly St., 505-372-7681

Perplexities, paintings by Cedra Wood, and drawings by Nina Elder; through April 29.

Smoke the Moon

616 ½ Canyon Rd., smokethemoon77@gmail.com

Long Live, multidisciplinary works by Alyse Ronayne; through May 14.

Sorrel Sky Gallery

125 W. Palace Ave., 505-501-6555

The Real and Ideal, paintings by David Knowlton; through April.

Strata Gallery

418 Cerrillos Rd., Design Center, Suite 1C, 505-780-5403

Ephemerality, photographic group show; through April 21.

Turner Carroll Gallery

725 Canyon Rd., 505-986-9800

Works on paper by Jaune Quick-to-See Smith; through May 7.

Vital Spaces Annex Gallery

Midtown Campus, 1600 St. Michael's Dr., vitalspaces.org

Art as Inquiry, group show of works by art-science practitioners; through May 15.

MUSEUMS & ART SPACES

Santa Fe

Coe Center for the Arts

1590-B Pacheco St., 505-983-6372

African, Asian, European, Native American, and Oceanic objects; email info@coeartscenter.org for tours; coeartscenter.org. Open by appointment.

Georgia O'Keeffe Museum

217 Johnson St., 505-946-1000

Radical Abstraction, paintings from the collection; through Oct. 30 • *Georgia O'Keeffe: Making a Life*, art and objects from the collection; through March 27, 2024; okeeffemuseum.org. Open Thursdays-Mondays.

IAIA Museum of Contemporary Native Arts

108 Cathedral Pl., 888-922-4242

IAIA BFA Exhibition, juried show; through May 13 • *Inherent Memory*, group show of basketry-related art by California and Great Basin-based women and nonbinary artists; through June 25

• *Rick Rivet: Journeys, Mounds and the Metaphysical*, 30-year retrospective of work by the Sahtu-Métis painter; through July 2 • *The Stories We Carry*, jewelry from the museum collection; through Sept. 30, 2024; iaia.edu/mocna. Closed Tuesdays.

Meow Wolf

1352 Rufina Circle, 505-395-6369

The House of Eternal Return, interactive installation. The Adulti-Verse at Meow Wolf, admission discounts for ages 21+ first Thursdays of the month; meowwolf.com. Closed Tuesdays and Wednesdays.

Museum of Encaustic Art

18 County Rd. 55A, Cerrillos, 505-424-6487

Rotating exhibits of encaustic/wax art; moeart.org. Open Fridays-Sundays.

Museum of Indian Arts and Culture

710 Camino Lejo, Museum Hill, 505-476-1269

Grounded in Clay: The Spirit of Pueblo Pottery, traveling exhibit of historical and contemporary works from the School for Advanced Research Indian Arts Research Center collection; through May 29 • *Here, Now and Always*, artifacts from the collection; indianartsandculture.org. Open daily.

Museum of International Folk Art

706 Camino Lejo, Museum Hill, 505-476-1200

Between the Lines: Prison Art and Advocacy/ a Community Conversation, engagement-based exhibit providing public input through talk-back boards and a dialogue lounge; through Oct. 18 • *La Cartoneria Mexicana: The Mexican Art of Paper and Paste*, historic sculptures from the collection, exhibited alongside the work of three visiting cartoneros; through June 2024. Core exhibits: *Multiple Visions: A Common Bond*, works in the Alexander Girard Wing • *Lloyd's Treasure Chest: Folk Art in Focus*, thematic displays from the permanent collection; moifa.org. Closed Mondays.

Museum of Spanish Colonial Art

750 Camino Lejo, museum@spanishcolonial.org

Trails, Rails, and Highways: How Trade Transformed the Art of Spanish New Mexico, works from the collection; through August • *Youth Gallery*, Youth Market artists' works; spanishcolonial.org. Open Wednesdays-Fridays.

New Mexico Governor's Mansion

1 Mansion Dr., newmexicogovernorsmansion.org

Including works by Marie Romero Cash, Gerald Cassidy, William Penhallow Henderson, and Willard Nash. Free, docent-led tours noon-2 p.m. the second and fourth Wednesdays monthly (by appointment). Contact Mary Brophy, 505-476-2800, mary.brophy@gsd.nm.gov. Private group tours available through the year.

New Mexico History Museum

113 W. Palace Ave., 505-476-5200

Palace Seen and Unseen: A Convergence of History and Archaeology, photographs and artifacts • *The Massacre of Don Pedro Villasur*, graphic art by Turner Avery Mark-Jacobs • *The First World War*, ephemera relating to New Mexicans' contributions • *Setting the Standard: The Fred Harvey Company and Its Legacy*, objects from the collection and photographs from Palace of the Governors archives • *Telling New Mexico: Stories From Then and Now*, artifacts, photographs, films, and oral histories; nmhistorymuseum.org. Downtown walking tours 10:15 a.m. Wednesdays-Sundays, through October. Open daily.

New Mexico Museum of Art

107 W. Palace Ave., 505-476-5072

With the Grain, showcasing Hispanic, Northern New Mexico wood carvers; through Sept. 4 • *An American in Paris: Donald Beauregard*, paintings, through Oct. 22; *The Nature of Glass*, group show, through December • *Manuel Carrillo: Mexican Modernist*, photographic exhibition; through Feb. 4, 2024; nmartmuseum.org. Closed Mondays.

Poeh Cultural Center and Museum

78 Cities of Gold Rd., Pueblo of Pojoaque, 505-455-5041

Di Wae Powa: They Came Back, historical Tewa Pueblo pottery • *The Why*, group show of works by Native artists • *Nah Poeh Meng*, 1,600-square-foot core installation highlighting the works of Pueblo artists and Pueblo history; poehcenter.org. Open Mondays-Fridays.

Santa Fe Botanical Garden

715 Camino Lejo, Museum Hill, 505-471-9103

14-acre living museum; santafebotanicalgarden.org. Open daily.

SITE Santa Fe

1606 Paseo de Peralta, 505-989-1199

Direct Action, Pedro Reyes' immersive installation; through May 8; sitesantafe.org. Closed Tuesdays and Wednesdays.

Wheelwright Museum of the American Indian

704 Camino Lejo, Museum Hill, 505-982-4636

California Stars: Huivaniüs Pütsiv, showcasing the first Californian artists whose works reflected personal experiences, mythology, and social justice; through Jan. 14, 2024. Long term: *Center for the Study of Southwestern Jewelry*, devoted to Diné and Pueblo traditions • *Portraits: Peoples, Places, and Perspectives*, paintings • *Rooted: Samples of Southwest Basketry*; works from the collection; wheelwright.org. Closed Sundays and Mondays.

Albuquerque

Albuquerque Museum

2000 Mountain Rd. NW, 505-243-7255

Those (Un)Familiar Faces, works from the photo archives; through July 9 • *Indigenous Art, Culture, and Community* (from the collection of Ruth and Sydney Schultz); through July 23 • *Journey West: Danny Lyon*, photographs, films, and montages spanning Lyon's 60-year career; through Aug. 27; cabq.gov/culturalservices/albuquerque-museum. Closed Mondays.

Holocaust and Intolerance Museum of New Mexico

616 Central Ave. SW, 505-247-0606

Overtured: A Life Etched in Stone • *Hate in America*. Permanent exhibits, *With Evil Intent* • *African American Experience, Phase 2: Slavery 1866-1945* • *Czech Torah* • *Armenian Genocide* • *Hidden Treasures* • *Colonization: Racism and Resilience*; nmholocaustmuseum.org.

Indian Pueblo Cultural Center

2401 12th St., NW, 505-843-7270

We Are of This Place: The Pueblo Story, historical overview and contemporary artwork of pueblos. Weekend Native dance performances; indianpueblo.org. Open Tuesdays-Sundays.

National Hispanic Cultural Center

1701 Fourth St. SW, 505-246-2261

The Mountains Wore Down to the Valleys, installation by Adri De La Cruz and Marisa Demarco; through April 23 • *Nexo Entre Raíces/ Nexus Between Roots*, group show of prints; through Sept. 10 • *Aquí Estamos*, selections from the permanent collection; through Sept. 17; nationalhispaniccenter.org. Open Tuesdays-Sundays.

Taos

Couse-Sharp Historic Site

138 & 146 Kit Carson Rd., 575-751-0369

Etched in Memory: Gene Kloss' Taos, etchings, works on paper, and paintings; through May 13; couse-sharp.org. Open Tuesdays-Saturdays.

La Hacienda de los Martinez

708 Hacienda Way, 575-758-1000

Northern New Mexico-style, Spanish colonial "great house." Built in 1804 by Severino Martinez; taohistoricmuseums.org; open daily.

Millicent Rogers Museum

1504 Millicent Rogers Rd., 575-758-2462

Tuah-Tah/Taos Pueblo: Home, highlighting the Pueblo's culture and artistic achievements • *Pop Chalee! Yippee Ki Yay!*, paintings; millicentrogers.org. Open daily.

Taos Art Museum at Fechin House

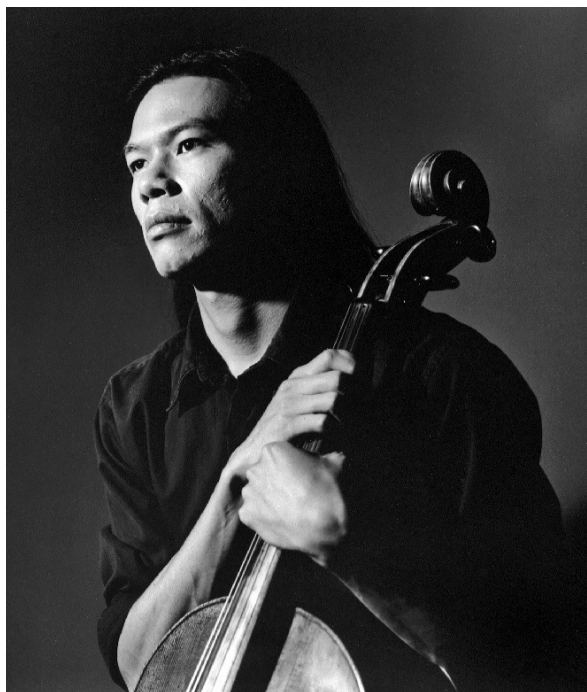
227 Paseo del Pueblo Norte, 575-758-2690

Housed in the studio and home that artist Nicolai Fechin built for his family between 1927 and 1933. Closed Mondays; taosartmuseum.org.



Nüart Gallery (nuartgallery.com) shows work by painter Lloyd Martin through April 23.

IN THE WINGS



Chatter Albuquerque presents cellists Felix Fan (pictured) and Mariel Roberts April 22 at SITE Santa Fe.

Music

Firey String Sistas

SITE Santa Fe, 1606 Paseo de Peralta, 505-989-1199

Jazz chamber ensemble infusing global funk, soul, and jazz; 7 p.m. April 21; \$30 and \$35; santafemusiccollective.org.

Chatter (in) SITE

SITE Santa Fe, 1606 Paseo de Peralta, 505-989-1199

Cellists Felix Fan and Mariel Roberts; Jean-Baptiste Barrière (Duo for Two Cellos), improvisations based on musical scores by Mokha Laget, and Mauricio Kagel (*Match*); 10:30 a.m. April 22; \$5-\$16; chatterabq.org/boxoffice.

Kay Northcutt and C. Scott Hagler

St. John's United Methodist Church, 1200 Old Santa Fe Trail

Piano duets of Brahms to Broadway; 4 p.m. April 22; \$5-\$25; southwestarts.org.

José Street Reunion

San Miguel Chapel, 410 Old Santa Fe Trail

Singer-songwriters Teri Lynn Browning, Margaret Burke, and Lori Ottino, pedal-steel guitarist Jon Graboff, and bassist Josh Martin; 5 p.m. April 22; \$20; sanmiguelchapelsantafe.org.

Geoff Muldaur

Outpost Performance Space, 210 Yale Blvd. SE, Albuquerque, 505-268-0044

Folk-blues singer-guitarist; 3-5 p.m. April 23; \$25 and \$30; outpostspace.org.

Ukulele Orchestra of Great Britain

Lensic Performing Arts Center, 211 W. San Francisco St., 505-988-1234

Acoustic mix of rock, pop, jazz, blues, and classical music; 7:30 p.m. April 23; \$29-\$52; lensic.org/events.

The Tallis Scholars

Cathedral Basilica of St. Francis of Assisi, 131 Cathedral Pl.

Vocal ensemble celebrating its 50th anniversary; music of Tallis, Palestrina, and Lassus; 7:30 p.m. April 24; \$35-\$115; 505-984-8759; performancesantafe.org.

SFS Strata II Music of the Spheres

Meow Wolf, 1352 Rufina Circle, 505-395-6369

Santa Fe Symphony's chamber-music series, held in the immersive art installation *House of Eternal Return*; 7 p.m. April 25; \$30-\$150; boxoffice.santafesymphony.org/8374.

Sunny War

Tumbleroot Brewery & Distillery, 2791 Agua Fria St., 505-393-5135

The singer-songwriter-guitarist tours in support of her latest album, *Anarchist Gospel*; 7:30 p.m. April 26; \$15; tickets.lensic360.org/tickets/411007.

Watchhouse

Lensic Performing Arts Center, 211 W. San Francisco St., 505-988-1234

Americana/folk duo Andrew Marlin and Emily Frantz; 7:30 p.m. April 27; \$37-\$49; ampconcerts.org.

Dr. Hall's Songwriters in the Round

Jean Cocteau Cinema, 418 Montezuma Ave., 505-466-5528

Lucy Barna, Dr. Hall, and Rich Rajacich; 6:30 p.m. April 28; \$20; jeancocteaucinema.com.

Les Violons du Roy & Inon Barnatan

Duane Smith Auditorium, Los Alamos High School, 1300 Diamond Dr.

Canadian 15-piece chamber orchestra, with the pianist; music of C.P.E. Bach and Shostakovich; 7 p.m. April 28; \$35; losalamosconcert.

The Met Live in HD

Lensic Performing Arts Center, 211 W. San Francisco St., 505-988-1234

Terence Blanchard's *Champion* (April 29); Robert Carsen's production of *Falstaff* (May 6); \$22-\$28; lensic.org/events.

Santa Fe Pro Musica season finale

Lensic Performing Arts Center, 211 W. San Francisco St., 505-988-1234

Thomas O'Connor leads the orchestra in works of W.F. Bach, Benjamin Britten, and Handel; 3 p.m. April 30; \$22-\$92; 505-988-4640, sfpromusica.org.

Kray Van Kirk

San Miguel Chapel, 410 Old Santa Fe Trail

Americana singer-songwriter; 7 p.m. April 30; \$20; sanmiguelchapelsantafe.org.

Nick Shoulders

Tumbleroot Brewery & Distillery, 2791 Agua Fria St., 505-393-5135

Yodeling country singer-songwriter; 7:30 p.m. May 4; \$18 in advance, \$23 day of; 505-886-1251, ampconcerts.org.

Wendy Beach Group

Outpost Performance Space, 210 Yale Blvd. SE, Albuquerque, 505-268-0044

Jazz vocalist/bassist, joined by Alex Murzyn on saxophone, John Funkhouser on piano, Cyrus Campbell on bass, and Arnaldo Acosta on drums; 7:30 p.m. May 4; \$20 and \$25; outpostspace.org.

Joshua Redman 3x3

Lensic Performing Arts Center, 211 W. San Francisco St., 505-988-1234

Tenor saxophonist, with bassist Larry Grenadier and percussionist Marcus Gilmore; 7:30 p.m. May 5; \$35-\$115; 505-984-8759, performancesantafe.org.

Nattali Rize

Tumbleroot Brewery & Distillery, 2791 Agua Fria St., 505-393-5135

Reggae musician on her Liberate tour; 8 p.m. May 7; Kumar and Minori open; \$17; holdmyticket.com/tickets/407888.

Steve Miller Band

Sandia Amphitheater, Sandia Resort & Casino, 30 Rainbow Rd.

On tour once more after 50-plus years, 8 p.m. May 12; \$70-\$125; sandiacasino.com/event/steve-miller-band.

Radio Free Bassandra

Gig Performance Space, 1808 Second St., gigsantafe.com

Balkan-beats quartet, Roger Landes, Chipper Thompson, Ben Wright, and Karina Wilson; 7:30 p.m. May 13; \$25; gigsantafe.tickit.ca.

Ruston Kelly

Meow Wolf, 1352 Rufina Circle, 505-395-6369

Alt-country songwriter on the The Weakness Tour, guest acts Richy Mitch & the Coal Miners; 7 p.m. May 16; \$25, VIP \$115.50; tickets.meowwolf.com.

Mark Turner Quartet

Outpost Performance Space, 210 Yale Blvd. SE, Albuquerque, 505-268-0044

Tenor saxophonist, with trumpeter Jason Palmer, bassist Joe Martin, and percussionist Jonathan Pinson; 7:30 p.m. May 18; \$25 and \$30; outpostspace.org.

Cedric Watson & Corey Harris

Outpost Performance Space, 210 Yale Blvd. SE, Albuquerque, 505-268-0044

Delta blues artists; 7:30 p.m. May 19; \$25 and \$30; outpostspace.org.

Don Giovanni

Lensic Performing Arts Center, 211 W. San Francisco St., 505-988-1234

The Met: Live in HD series continues with Ivo van Hove's debut production of Mozart's tragicomedy; 11 a.m. and 6 p.m. May 20; \$22-\$28; tickets.lensic.org/events.

17th Annual Crawdaddy Blues Festival

Madrid Railyard, next to The Mine Shaft Tavern, 2846 NM 14, 505-473-0743

Twenty-one bands, including Ghost Train, Iyah, Key Frances, Hillary Smith and Chill House, Jim Almand, Ron Crowder, and Felix y Los Gatos; noon May 20 and 21; \$30; holdmyticket.com/tickets/411813.

Severall Friends

San Miguel Chapel, 401 Old Santa Fe Trail

Period-instrument ensemble Emily Noël, Robert Eisenstein, Lawrence Lipnik, Mark Rimple, and Mary Springfels; music of William Byrd, Anthony Holborne, and Thomas Campion; 7:30 p.m. May 20; \$20, students no charge; severallfriends.org

Sarah Shook and the Disarmers

The Bridge at Santa Fe Brewing Company, 37 Fire Pl., 505-557-6182

Americana band; 7:30 p.m. May 26; \$18; holdmyticket.com/tickets/410413.

27th Annual Silver City Blues Festival

Townwide and Gough Park

Local and out of state musicians, including Tyron Benoit Band, Dirty Red & the Soul Shakers, and Ghost Town Blues Band; beer gardens, Makers Market, and food and beverage vendors; May 27-28; 575-538-2505, silvercitybluesfestival.org.

Song for Taos

Harwood Museum of Art, 238 Ledoux St., 575-758-9826

Performance by Taos Pueblo flutist Robert Mirabal and New York City-based string quartet ETHEL; 5:30 p.m. June 3 and 4; \$12-\$30; harwoodmuseum.org/events.

Tawanda Suesbrich-Joaquim and the John Rangel Trio

Dave's Jazz Bistro, Santa Fe Cooking School, 125 N. Guadalupe St., 800-982-4688

Los Angeles-based vocalist; dinner show 6:30-9:30 p.m. June 3; \$185; santafeschoolofcooking.com.

Toad The Wet Sprocket

Hilton Santa Fe Buffalo Thunder, 20 Buffalo Thunder Tr., 505-455-5555

On tour in support of their album *New Constellation*; 8 p.m. June 3; Marcy Playground opens; \$59-\$79; holdmyticket.com/tickets/410315.

Tab Benoit

National Hispanic Cultural Center, 1701 Fourth St. SW, 505-246-2261

Delta-blues singer-songwriter; 7:30 p.m. June 6; songwriter Matt Andersen opens; \$27-\$47; ampconcerts.org or in person.

Mary Chapin Carpenter Summer 2023 U.S. Tour

KiMo Theatre, 423 Central Ave. NW, 505-768-3522, Albuquerque

June 9, 7:30 p.m.; \$51-\$76; tickets.holdmyticket.com/tickets/410838.

Stars of the Chamber Music Society of Lincoln Center

Simms Center for Performing Arts, 6400 Wyoming Blvd. NE

Cellist David Finckel, pianist Wu Han, and violinist Arnaud Sussman; music of Haydn, Dvořák, and Saint-Saens; 4 p.m. June 11; \$30 and \$40; chambermusicabq.org.

Django Festival Allstars

Outpost Performance Space, 210 Yale Blvd. SE, Albuquerque, 505-268-0044
Guitarists Philippe Cuillerier and Samson Schmitt, violinist Pierre Blanchard, accordionist Ludovic Beier, and bassist Antonio Licusati; 7:30 p.m. June 15; \$25 and \$30; outpostspace.org.

The Black Opry Revue

Lensic Performing Arts Center, 211 W. San Francisco St., 505-988-1234
Touring revue for Black country musicians; 7:30 p.m. June 16; \$25-\$45; tickets.lensic.org/8713/8715.

To Shiver the Sky

Lensic Performing Arts Center, 211 W. San Francisco St., 505-988-1234
Christopher Tin's score for orchestra, chorus, and soloists, performed by The Zia Singers, New Mexico Gay Men's Chorus, and Rio Rancho Youth Chorus; 3 p.m. June 18; lensic.org/events.

Off the Rails

SITE Santa Fe, 1606 Paseo de Peralta, 505-989-1199, and at the Railyard
SITE's annual benefit and concert; headliners, singer-songwriters Helado Negro and Lido Pimienta; 7 p.m. June 22; lawn tickets \$20 and \$42; VIP lounge \$250; tickets.lensic360.org/tickets/411385.

Trevor Hall

The Bridge at Santa Fe Brewing Company, 37 Fire Pl., 505-557-6182
Roots singer-songwriter; 6:30 p.m. June 23; The California Honeydrops open; \$42; tickets.lensic360.org/tickets/412928.

Dumpstafunk

Taos Mesa Brewing Mothership Stage, 20 ABC Mesa Rd., 575-758-1900, El Prado
New Orleans dance band; 7:30 p.m. June 24; \$27; tickets.lensic360.org/tickets/412958.

Santa Fe Opera

301 Opera Dr., 800-280-4654
JuJune 30 season opener, a new production of Puccini's *Tosca*, followed by Wagner's *The Flying Dutchman* (July 1), Debussy's *Pellés and Mélisande* (July 15), Dvořák's *Rusalka* (July 22), and Monteverdi's *Orfeo* (July 29); \$37-\$341; santafeopera.org/operas-and-ticketing.

Theater/Dance

Miranda Sings

Lensic Performing Arts Center, 211 W. San Francisco St., 505-988-1234
Comedian-actress Colleen Ballinger's one-woman show; 7:30 p.m. April 22; \$35-\$90; lensic.org/events.

The Walls Have Ears

Teatro Paraguas, 3205 Calle Marie, 505-424-1601
Labinger Productions presents Jerry Labinger and Talia Pura's family drama set during WWII; 7:30 p.m. April 28-May 7; \$20, youth \$15; 505-428-8508, contact@taliapura.com.

New Mexico Drag Kings

Jean Cocteau Cinema, 418 Montezuma Ave.
Wild West Show: Saints Ball Invasion!; 9 p.m. April 29; \$20 and \$25; events.eventgroove.com; percentage of proceeds benefit Santa Fe Food Depot.

Simpatico

New Mexico Actors Lab Theater, 1213 Parkway Dr., 505-395-6576
New Mexico Actors Lab presents Sam Shepard's 1994 black comedy; May 3-21; \$15-\$35; nmactorslab.com.

Sweat

Santa Fe Playhouse, 142 E. De Vargas St., 505-988-4262
Lynn Nottage's 2015 drama about factory workers facing layoffs; May 11-June 10; \$20-\$75, discounts available; santafeplayhouse.org.

A Flamenco Celebration of Love Poetry

Teatro Paraguas, 3205 Calle Marie, 505-424-1601
Argos MacCallum reads from his poetry collection *Sleeping Woman Mountain*, accompanied by Compania Chuscales y Mina Fajardo; 7 p.m. May 12 and 13; \$25 in advance, \$30 at the door, seniors and students \$20; teatroparaguasnm.org.

Mother's Day Flamenco Concert

Teatro Paraguas, 3205 Calle Marie, 505-424-1601
Guitarists Chuscales and Marc Yaxley, singer Mina Fajardo, and dancers Monze Diaz and Katherine Pavuk; 3 p.m. May 14; \$25 in advance, \$30 at the door, mothers, seniors, and students \$20; teatroparaguasnm.org.

Othello

Lensic Performing Arts Center, 211 W. San Francisco St., 505-988-1234
The broadcast series National Theatre Live in HD continues; 7 p.m. May 14; \$19-\$22; lensic.org/events.

Aspen Santa Fe Ballet Folklorico Recital 2023

Lensic Performing Arts Center, 211 W. San Francisco St., 505-988-1234
Folklorico and flamenco students showcase; 6 p.m. May 28; \$35; lensic.org/events.

Events, Etc.

Johnnie Week Earth Day

St. John's College, 1160 Camino Cruz Blanca, 505-984-6000
Free and open to the public; 10:30 a.m.-7:15 p.m. April 22; outdoor activities, screening of *Stewart Udall and the Politics of Beauty* documentary, and student exhibition. Online reservations requested for a talk by eco-philosopher Sophie Strand and musical performance by EcoSono Ensemble; community.stjohnscollege.edu/earth-day.

Devi Lockwood

Hotel Santa Fe, 1501 Paseo de Peralta
The author of *1001 Voices on Climate Change* discusses her collection of first-person accounts; luncheon and presentation 11:30 a.m. April 24; \$45 and \$55; globalsantafe.org. Preregistration required.

Gathering of Nations Pow Wow

Tingley Coliseum, 300 San Pedro Dr. NE, 505-222-9700
Miss Indian World pageant, live music, Indian Traders Market, and horse parade; April 27-29; \$15-\$45; 505-836-2810, gatheringofnations.com.

Pelléas et Mélisande: Great Singers of the Past

Santa Fe Woman's Club, 1616 Old Pecos Trail
An illustrated presentation on Debussy's opera by Santa Fe Opera Guild board member Ifan Payne; 6 p.m. May 4; \$10 and \$20; santafeoperaguild.org/guild-events.

High Road Fest

El Rey Court, 1862 Cerrillos Rd., 505-982-1931
Art market, creative and wellness workshops, food, and live music with John Francis & The Poor Clares, Hey Cowboy!, Red Light Cameras, Y La Bamba, and Zivi; 11 a.m.-11 p.m. May 6; free tickets at tickets.lensic360.org/tickets/412513.

Kentucky Derby Day

Hipico Santa Fe, 100 S. Polo Dr., 505-474-0999
Outdoor fundraiser for Santa Fe Shelter's Santa Fe Suites program; live entertainment, live and silent auctions, fancy hat parade; 1-5 p.m. May 7; \$125; steshelter.org/2022-kentucky-derby-day.

Santa Fe International Literary Festival

Santa Fe Community Convention Center, 201 W. Marcy St.
Including authors John Irving, Jennifer Egan, Luis Alberto Urrea, and Diana Gabaldon; a tribute to Rudolfo Anaya and 30-plus events; May 19-21; individual sessions \$15-\$50, day passes and big stage passes available; sfinternationallitfest.org.

Taos Lilac Festival

Kit Carson Park, 211 Paseo del Pueblo Norte
Arts & crafts booths, lilac window displays, and self-guided tours of historic district; 11 a.m.-5 p.m. May 19, 10 a.m.-5 p.m. May 20 and 21; taoslilacfestival.com.

Ghhúunayúkata / To Keep Them Warm: The Alaska Native Parka

Museum of International Folk Art, 706 Camino Lejo, Museum Hill, 505-476-1200
Selections of parkas from the mid-19th century to contemporary reinterpretations, representing five Alaska Native communities: Yup'ik, Iñupiaq, Unangan, Dena'ina Athabaskan, and St. Lawrence Island Yupik; opening May 21; through April 7.

Native Treasures Night Market

Santa Fe Community Convention Center, 201 W. Marcy St.
Cocktail reception honoring incoming Living Treasures recipient Anthony Lovato, outgoing 2022 recipient Virgil Ortiz, and 2023 MIAC Legacy winners Lynda Teller Pete and Barbara Teller Ornelas; 5-8 p.m. May 26, \$100; miac.eventbrite.com.

Native Treasures Art Market

Santa Fe Community Convention Center, 201 W. Marcy St.
Performances and children's activities; 9 a.m.-5 p.m. May 27 and 28; \$5, ages 17 and under no charge; miac.eventbrite.com. Proceeds benefit the Museum of Indian Arts and Culture.

Chris Rainier

Lensic Performing Arts Center, 211 W. San Francisco St., 505-988-1234
The documentary photographer and author of *Cultures on the Edge: A Journey into Indigenous Ways of Being* discusses his monograph; 7:30 p.m. June 1; \$10; lensic.org/events.

Spring and Fiber Festival

El Rancho de las Golondrinas, 334 Los Pinos Rd., 505-471-2261
Fiber-arts market, demonstrations, vendors, and hands-on crafts for children; 10 a.m.-4 p.m. June 3 and 4; \$8, seniors and ages 13-18 \$6, ages 12 and under no charge; golondrinas.org.

Magnificent Rebels: The First Romantics and the Invention of the Self

Lensic Performing Arts Center, 211 W. San Francisco St., 505-988-1234
Author Andrea Wulf discusses her research of diaries, correspondence, and literary works produced by 18th-century German intellectuals; 7:30 p.m. June 20; free tickets at lensic.org/events.



AMP Concerts presents Watchhouse April 27 at the Lensic.