

PASA WEEK

ARTS AND ENTERTAINMENT CALENDAR
June 1-7, 2018

CALENDAR LISTING GUIDELINES

- To list an event in Pasa Week, send an email or press release to pasa@sfnewmexican.com or pambeach@sfnewmexican.com.
- Send material no later than two weeks prior to the desired publication date.
- For each event, provide the following information: time, day, date, venue/address, ticket prices, web address, phone number, and brief description of event (15 to 20 words).
- All submissions are welcome; however, events are included in Pasa Week as space allows. There is no charge for listings.
- Return of photos and other materials cannot be guaranteed.
- *Pasatiempo* reserves the right to publish received information and photographs on *The New Mexican's* website.
- To add your event to *The New Mexican* online calendar, visit santafenewmexican.com and click on the Calendar tab.
- For further information contact Pamela Beach: pambeach@sfnewmexican.com, 202 E. Marcy St., Santa Fe, NM 87501, phone: 505-986-3019.

CALENDAR COMPILED BY
PAMELA BEACH & PATRICIA LENIHAN

FRIDAY 6/1

Gallery and Museum Openings

Charlotte Jackson Fine Art

554 S. Guadalupe St., 505-989-8688

Bodhi, paintings by Joan Watts; reception 5-7 p.m.; through June 26.

Christ Lutheran Church

1701 Arroyo Chamiso Rd., 505-983-9461

Collage by Karin Granberg-Michaelson and Asian landscapes by Suzanne Dreith; reception 5-7 p.m.; through July.

Counter Culture Café

930 Baca St., 505-995-1105

Los Supersonicos, photographs of automobiles in Havana, Cuba, by Carlos Briceño; reception 6 p.m.

El Museo Cultural de Santa Fe

555 Camino de la Familia, 505-992-0591

Ye Gods! Icons of Aztec Deities, drawings by Richard Balthazar; reception 5-7 p.m.; through July 29.

Elmore Contemporary

839-M Paseo de Peralta, 505-995-9677

Five Paintings by Steve Elmore and *The Secret Life of Paint*, oil paintings and monotypes by Sina Brush; reception 4-7 p.m.; through June.

JFD Gallery

1221 Flagman Way, Unit A-2, 505-955-1911

Residue, photography by Joshua Michael Schrei; reception 5-7; through June.

Manitou Galleries

123 W. Palace Ave., 505-986-0440

New Mexico landscapes by Jerry Jordan, Liz Wolf, and William Haskell; reception 5-7:30 p.m.

Meyer Gallery

225 Canyon Rd., 505-983-1434

Sacred Spaces, paintings by Suchitra Bhosle; reception 5-7 p.m.; through June 14.

New Concept Gallery

610 Canyon Rd., 505-795-7570

Human Nature, photographs and bronze sculpture by Bill Heckel; reception 5-7 p.m.; through June.

OTA Contemporary

203 Canyon Rd., 505-930-7800

Presentations, abstract expressionist works by Wes Hunting; reception 5:30-7 p.m.; through June.

Phil Space

1410 Second St., 505-983-7945

High Brow Low Ride, paintings by Shelley Horton-Trippe, closing reception 6-9 p.m.; fundraiser for Santa Fe Youthworks.

Sorrel Sky Gallery

125 W. Palace Ave., 505-501-6555

This is the West, paintings by Maura Allen and Jim Rey; reception 5-7:30 p.m.; through June.



GVG Contemporary (241 Delgado St.) shows watercolors by Ken Horne.

Sugarman-Peterson Gallery

130 W. Palace Ave., 505-982-0340

New graphite and gold leaf works by Budd Root-Michels; reception 5-7:30 p.m.; through June 22.

True West

130-F Lincoln Ave., 505-982-0055

Group show with jewelry artists Joanne Douglas, Matt Miranda, Joshua Bingham, and John Paul Rangel; reception 5-8 p.m.

Vista Grande Public Library

14 Avenida Torreon, Eldorado, 505-466-7323

Trees, photographs by Joan C. Biordi; reception 4-6 p.m.; through June 29.

Classical Music

TGIF piano recital

First Presbyterian Church, 208 Grant Ave., 505-982-8544

Folias Duo: Carmen Maret, flute, and Andrew Bergeron, guitar; music of Maret, Bergeron, and Piazzolla; 5:30 p.m.; by donation.

In Concert

The Bob Fox Trio

Museum Hill Café, 710 Camino Lejo

The pianist in concert with Colin Deuble on bass and John Trentacosta on drums; 7 p.m.; \$25; 505-946-7934, santafemusiccollective.org.

Music at the Museum

St. Francis Auditorium, New Mexico Museum of Art, 107 W. Palace Ave., 505-476-5072

Rio plays bossa nova jazz 5-7 p.m.; by museum admission; free entrance to NM residents after 5 p.m.

Sawyer Brown

Buffalo Thunder Resort & Casino, 20 Buffalo Thunder Trail, 877-848-6337

Country band; 8 p.m.; \$29-\$49, hiltonbuffalo-thunder.com.

Theater/Dance

Extremities

Adobe Rose Theatre, 1213-B Parkway Dr., 505-629-8688

William Mastro Simone's drama exploring sexual-power politics; directed by Melissa Chambers, with Mariah Olesen, Marianna Gallegos, Nicole Bartlett, and Koppany Pusztai; 7:30 p.m. Thursdays-Saturdays, 3 p.m. Sundays through June 10; \$25, discounts available, extremities.bpt.me, 800-838-3006, Ext. 1.

Books/Talks

The Fate of the Earth

The Lensic

Elizabeth Kolbert, staff writer at *The New Yorker* and author of *The Sixth Extinction: An Unnatural History*, argues that man-made climate change will cause mass extinction in a conversation and Q&A session with Michael Brown, School for Advanced Research president, and Terry Sullivan, director of The Nature Conservancy in New Mexico; 6 p.m.; cash-bar reception and book signing follow; check for ticket availability, 505-988-1234, ticketsantafe.org. (See story, Page 30)

Classes

Meow Wolf workshop

Meow Wolf, 1352 Rufina Circle, 505-395-6369

Trapping the Muse: Using Writing to Harness Your Creativity, a five-week series for all ages, at David Loughbridge Learning Center; 6:30 p.m.; \$60. Register at meowwolf.com.

Outdoors

Kasha-Katuwe Tent Rocks

National Monument trails

Exit 264 off Interstate 25 onto NM 16, right on NM 22; follow the signs

Hiking trails range from wheelchair-accessible to steep; open 8 a.m.-4 p.m. daily; closing procedures begin 3:30 p.m.; \$5 per vehicle; group rates available; 505-331-6259, blm.gov/visit/kktr.



King Galleries (130-D Lincoln Ave.) shows works by Les Namingha.

Los Alamos Gentle Walks

Los Alamos Nature Center, 2600 Canyon Rd., 505-662-0460
Free guided treks for adults, 8:30 a.m.-noon; register online at pecnature.org.

Randall Davey Audubon Center & Sanctuary trails and gardens

1800 Upper Canyon Rd., 505-983-4609
Self-guided hikes; 8 a.m.-4 p.m. Mondays-Saturdays.

Santa Fe Canyon Preserve

Upper Canyon and Cerro Gordo Roads
525 acres of open space; bosque of cottonwood and willow trees; hiking trails, including trailhead for the 22-mile Dale Ball Trail System; 140 bird species; wildflowers; and more. Open daily; nature.org.

Events

First Friday art activity at O'Keeffe Museum

217 Johnson St., 505-946-1000
All-ages drawing event in the galleries; 5-7 p.m.; by museum admission; okeeffemuseum.org/events.

First Fridays at Coe

Ralph T. Coe Center for the Arts, 1590-B Pacheco St.
Free behind-the-scenes view of global indigenous art collections, 1-4 p.m. monthly, 505-983-6372, coeartscenter.org.

New Mexico Cocktails & Culture Festival

Drury Plaza Hotel, 828 Paseo de Peralta, 505-982-0883
Mixology seminars, tasting parties, bartenders' competition; VIP weekend pass \$250; Saturday pass \$175; tickets to seminars and parties \$30-\$90; Taco Wars 6-9 p.m.; guests pick a top taco, with a portion of ticket sales plus \$250 on behalf of winning chef donated to Santa Fe Animal Shelter; advance tickets \$35, at the door \$40; nmcocktailculture.com; 21+; continues through Sunday.

Randall Davey House and Studio tours

Randall Davey Audubon Center & Sanctuary, 1800 Upper Canyon Rd., 505-983-4609
Docent-led tours; 2 p.m. Fridays; \$5; audubon.org.

Santa Fe Opera Backstage Tours

Santa Fe Opera, 301 Opera Dr., 800-280-4654
Behind-the-scenes tours including production and front-of-house areas; 9 a.m. Mondays-Fridays through Aug. 24, \$10 at the box office; seniors \$8; no charge for ages 22 and under; operatours@santafeopera.org.

SAR Indian Arts Research Center tour

Indian Arts Research Center, 660 Garcia St., 505-954-7205
View center's collection of Southwestern Native American pottery, textiles, basketry, jewelry, and paintings; 2 p.m.; \$15; reservations required.

School for Advanced Research campus tour

Reception Center, 660 Garcia St., 505-954-7213
1920s estate; 10 a.m. Fridays; \$15; 24-hour preregistration required.

Nightlife

(See Page 57 for addresses)

Bar Alto at Drury Plaza Hotel

Savor Trio, Cuban rhythms; 4-7 p.m.; no cover.

¡Chispa! at El Mesón

The Three Faces of Jazz featuring Jerry Weimer on clarinet; 7:30 p.m.; no cover.

El Farol

National Institute of Flamenco Company; 6:30 p.m.; \$25, call for reservations; soul band The Gruve; 9-11 p.m.; call for cover.

Evangelo's

Classic-rock band The Jakes; 9 p.m.-1 a.m.; call for cover.

Hotel Santa Fe

Flutist/guitarist Ronald Roybal; 7-9 p.m.; no cover.

La Fiesta Lounge at La Fonda

Rock 'n' roll band Little Leroy and His Pack of Lies; 8-11 p.m.; no cover.

La Posada de Santa Fe Resort and Spa

Singer Nacha Mendez; 6:30 p.m.; no cover.

Los Magueyes Mexican Restaurant

The Chameleons, jazz songs; 6:30-8:30 p.m.; no cover.

The Palace Restaurant & Saloon

Indie-folk singer-songwriter Rascal Martinez; 10 p.m.-1 a.m.; call for cover.

Pranzo Italian Grill

Geist Cabaret with David Geist; 6-9 p.m.; call for cover.

Second Street Brewery

Americana band Santa Fe Revue; 6-9 p.m.; no cover.

Second Street Brewery at the Railyard

Americana singer/songwriter Ryan Hutchens; 6-9 p.m.; no cover.

Taberna La Boca

Guitarist Jesús Bas; 7-9 p.m.; no cover.

Vanessie

At the Piano Bar: Al Rogers; 6 p.m.; Greg Schlotthauer; 8 p.m.; no cover.

SATURDAY 6/2

Gallery and Museum Openings

7 Arts Gallery

125 Lincoln Ave., Suite 110, 505-437-1107

The Idea of Wilderness, realist paintings by Charis Congail; reception 4-7 p.m.; through June.

King Galleries

130-D Lincoln Ave., 480-440-3912

Urban Polychrome, interactive installation of works on clay and canvas by Les Namingha; reception 1-3 p.m.; through Sept. 15.

In Concert

Lauria & Kott

San Miguel Chapel, 401 Old Santa Fe Trail, 505-983-3974

Americana songwriter-vocalist Laurianne Fiorentino and cellist Michael Kott; 7 p.m.; \$20; lauriamusic.com, 505-690-5907, and at the door.

Super Flu

Meow Wolf, 1352 Rufina Circle, 505-395-6369

Electronic fusion; opening acts Spoolius, Badcat; 9 p.m.; tickets \$16 in advance, \$19 day of show; meowwolf.com.

Theater/Dance

Extremities

Adobe Rose Theatre, 1213-B Parkway Dr., 505-629-8688

William Mastrosimone's drama exploring sexual-power politics; directed by Melissa Chambers, with Mariah Olesen, Marianna Gallegos, Nicole Bartlett, and Koppany Pusztai; 7:30 p.m. Thursdays-Saturdays, 3 p.m. Sundays through June 10; \$25, discounts available, extremities.bpt.me, 800-838-3006, Ext. 1.

Books/Talks

Survival Against All Odds

Temple Beth Shalom, 205 E. Barcelona Rd., 505-982-1376

Michael Maggen of Jerusalem's Israel Museum discusses conservation of sacred artifacts; 8 p.m.; part of the *Israel at 70: A Cultural Perspective 2018* series; no charge; call 505-982-6161 or visit sftbs.org for details.

Classes

Coffee: Your Daily Grind

Iconik Coffee Roasters, 1600 Lena St., 505-428-0996

Perfect Brewing at Home Part 1; class fee \$10; participants receive 15 percent discount on food, drink, or merchandise on day of class; 2 p.m.

Meow Wolf workshop

Meow Wolf, 1352 Rufina Circle, 505-395-6369

Collaborative Virtual Reality, Bjørn Parramoure teaches all ages to use a variety of software; 6-10 p.m.; \$80. Register at meowwolf.com.

Outdoors

Bird walks

Randall Davey Audubon Center & Sanctuary, 1800 Upper Canyon Rd., 505-983-4609

Guided by experienced birders; 8:30 a.m. Saturdays, as weather permits; no charge.

Forked Lightning Ranch hiking trail

E.E. Fogelson Visitor Center, Pecos National Historical Park NM 63, 505-757-7241

South Pasture Loop trail on ranch grounds open in celebration of National Trails Day; moderately difficult; check at Visitor Center for directions and hiking map; 8:30 a.m.-3 p.m.; hike must be completed by 5 p.m.; no charge; dogs on leash permitted; nps.gov/peco.

Questa History Walk

Corner of Hwy 522 and Hwy 38

Local historian Flavio Cisneros guides a short walk of Questa History & Community Trail; learn about rare geologic features, hispano and multi-cultural settlements, Native life and conflicts, frontier religious devotion, orchards, and arts; 10:30 a.m.; meet at Questa plazuela; no charge.

Wells Petroglyph Preserve tours

Directions provided with reservations

Includes rugged-terrain trails; 8:30-10:30 a.m. Saturdays and Wednesdays; \$35 per person; register online, mesaprietapetroglyphs.org/visit-the-wells-petroglyph-preserve, 505-852-1351.

Wildflowers and Plants

Cerrillos Hills State Park, about 16 miles south of Santa Fe off NM 14, 505-474-0196

Herbarium curator Pete Peterson leads an investigation of native plants and wildflowers found in the Cerrillos Hills; 11 a.m.; \$5 per vehicle; free with NM state parks pass.

Events

5th Annual MoCNA Family Day

Allan Houser Art Park, 108 Cathedral Pl., 888-922-4242

Native artists David Gaussoin (Picuris Pueblo/Navajo/French) and Connie Tsoie Gaussoin (Picuris Pueblo/Navajo) lead a clothing upcycle, 1-3 p.m.; family scavenger hunt, prizes, food truck; museum store 20 percent off children's items; performances by youth hoop dancers from the Lightning Boy Foundation, 3-4 p.m.; programs geared toward K-5, but all ages welcome; free for families.

New Mexico Cocktails & Culture Festival

Drury Plaza Hotel, 828 Paseo de Peralta, 505-982-0883

Mixology seminars, tasting parties, bartenders' competition; Saturday pass \$175; tickets to seminars and parties \$30-\$90; mixology seminars 11 a.m.-4 p.m., \$30 each; 5 p.m. award-winning mixologist Dale Degroff presents live entertainment and storytelling with bourbon cocktails, \$35; 7-10 p.m. Chef & Shaker Challenge, chef-bartender teams present food-and-cocktail pairings, advance tickets \$90, at the door \$100; nmcocktailculture.com; 21+.

Santa Fe Farmers Market

1607 Paseo de Peralta, 505-983-4098

Saturdays 7 a.m.-1 p.m.; santafefarmersmarket.com.

Santa Fe Opera Insider Days

Santa Fe Opera, 301 Opera Dr., 800-280-4654

A free event held at 8:30 a.m. Saturdays through Aug. 24; coffee and pastries followed by a talk by opera insiders and a backstage tour; operatours@santafeopera.org; reservations not required.

Spring & Fiber Fest: Women of the West

El Rancho de las Golondrinas, 334 Los Pinos Rd., 505-471-2261

Weaving demonstrations; sheep shearing; learn about life and commerce on the Santa Fe Trail, and more; 10 a.m. to 4 p.m.; traditional Mass and procession begins 10 a.m.; continues Sunday; admission \$8, discounts available; 12 and under free.

Nightlife

(See Page 57 for addresses)

¡Chispa! at El Mesón

Salsa trio Los Primos Melodicos; 7:30 p.m.; no cover.

El Farol

National Institute of Flamenco Company; 6:30 p.m.; \$25, call for reservations; R&B band Fritz & The Blue Jays; 9-11 p.m.; call for cover.

La Fiesta Lounge at La Fonda

Rock 'n' roll band Little Leroy and His Pack of Lies; 8-11 p.m.; no cover.

Living Room Lounge at Loretto

Jazz guitarist Pat Malone; 7-10 p.m.; no cover.

L'Olivier Restaurant

Accordianist-vocalist Dadou; 5-8 p.m.; no cover.

On the Rocks Lounge

Northern Revolution dance band; 8:30 p.m.-12:30 a.m.; no cover.

The Palace Restaurant & Saloon
Americana trio JeM; 10 p.m.-1 a.m.; call for cover.

Pranzo Italian Grill
Geist Cabaret with David Geist; 6-9 p.m.

Second Street Brewery
Jazz and blues band Left Bank; 6-9 p.m.; no cover.

Taberna La Boca
Singer-songwriter Lara Manzanara; 7-9 p.m.; no cover.

Vanessie
At the Piano Bar: David Wood, 6 p.m.; Greg Schlotthauer, 8 p.m.; no cover.

SUNDAY 6/3

Gallery and Museum Openings New Mexico History Museum

113 Lincoln Ave., 505-476-5200
Atomic Histories, an exhibit highlighting New Mexico's nuclear history, including photographer Meridel Rubenstein's two multimedia installations from the traveling exhibit *Critical Mass* and her room-sized installation *Oppenheimer's Chair*; through May 2019. (See story, Page 38)

Unitarian Universalist Congregation
107 W. Barcelona Rd., 505-982-9674

Southwest Serenity, landscapes by Roberta Parry; reception 2-4 p.m.; through June.

Classical Music

Santa Fe Community Orchestra
James A. Little Theater, New Mexico School for the Deaf, 1060 Cerrillos Rd., 505-476-6300

Season finale, John Williams' *Star Wars Suite*, Mason Bates' *Gemini in the Solar Wind*, and Oliver Prezant's *La Mariposa*, featuring storyteller Joe Hayes; 2:30 p.m.; donations accepted, sfco.org, 505-466-4879.

Theatre/Dance

Extremities
Adobe Rose Theatre, 1213-B Parkway Dr., 505-629-8688
William Mastrosimone's drama exploring sexual-power politics; directed by Melissa Chambers, with Mariah Olesen, Marianna Gallegos, Nicole Bartlett, and Koppany Pusztai; 7:30 p.m. Thursdays-Saturdays, 3 p.m. Sundays through June 10; \$25, discounts available, extremities.bpt.me, 800-838-3006, Ext. 1.

Books/Talks

Journey Santa Fe Presents
Collected Works Bookstore, 202 Galisteo St., 505-988-4226

Partnering to Manage the Wildfire Risk Across Large Landscapes: Why Forest Managers and Stakeholders Are Collaborating More than Ever, with Alan W. Barton; 11 a.m.; no charge.

Classes

Making History Series
New Mexico History Museum, 113 Lincoln Ave., 505-476-5200
Hands-on workshops held 1:30-3:30 p.m.; learn how to use a geiger counter; no charge.

Events

Gelli Plate Printing Workshop with Melanie Yazzie
Wheelwright Museum of the American Indian, 704 Camino Lejo, Museum Hill, 505-982-4636
Make a monoprint with the master printmaker; 1-4 p.m.; \$25; wheelwright.org or call extension 110 at number above; communications@wheelwright.org.

Heart & Soul Animal Sanctuary Spring Benefit Garden Party
Private residence

Presentations and refreshments; 1-5 p.m.; donations accepted; call 505-757-6817 for more information and directions.

New Mexico Cocktails & Culture Festival
Drury Plaza Hotel, 828 Paseo de Peralta, 505-982-0883
Bike ride providing economic relief to bartenders facing breast cancer, with all riders getting free admission to noon cocktail brunch, 9 a.m.; Bloody Battle & Cocktail Brunch, 12-3 p.m, live competition for NMCC Bartender of the Year, brunch and cocktails included, advance tickets \$35, at the door \$40; nmcocktailculture.com; 21+.

Railyard Artisan Market
Santa Fe Farmers Market Pavilion, 1607 Paseo de Peralta
Hand-crafted goods and food vendors; 10 a.m.-4 p.m. Sundays; artmarket.com.

Spring & Fiber Fest: Women of the West
El Rancho de las Golondrinas, 334 Los Pinos Rd., 505-471-2261

Weaving demonstrations; sheep shearing; learn about life and commerce on the Santa Fe Trail, and more; 10 a.m.-4 p.m.; admission \$8, discounts available; 12 and under free.

Nightlife

(See addresses at right)

El Farol
Jazz guitarist Pat Malone and bassist Jon Gagan; 7-10 p.m.; no cover.

La Fiesta Lounge at La Fonda
Guitarist-vocalist Gary Vigil; 6-8:30 p.m.; no cover.

Taberna La Boca
Singer Nacha Mendez; 6-8 p.m.; no cover.

Tiny's
The Good, Bad & Ugly open mic, with the Mike Montiel Trio; 3-7 p.m. Sundays; no cover.

Vanessie
At the Piano Bar: Al Rogers; 6:30 p.m.; no cover.

MONDAY 6/4

Books/Talks

Southwest Seminars lecture
Hotel Santa Fe, 1501 Paseo de Peralta, 855-825-9876
New Mexico's Mexican Governors, with state historian Rick Hendricks, 6 p.m.; \$15 at the door; 505-466-2775, southwestseminars.org.

Events

Santa Fe Opera Backstage Tours
Santa Fe Opera, 301 Opera Dr., 800-280-4654
Behind-the-scenes tours including production and front-of-house areas; 9 a.m. Mondays-Fridays through Aug. 24, \$10 at the box office; seniors \$8; no charge for ages 22 and under; operatours@santafeopera.org.

Nightlife
(See addresses at right)

Cowgirl BBQ
Cowgirl karaoke, hosted by Michele Leidig; 9 p.m.-close; no cover.

La Fiesta Lounge at La Fonda
Bill Hearne Trio, Americana/roots music; 7:30-11 p.m.; no cover.

The Matador
Metal Mondays, with DJ Lady Strange, heavy metal/hard rock/thrash; 9 p.m.-close; no cover.

Vanessie
At the Piano Bar: David Wood; 6:30 p.m.

TUESDAY 6/5

In Concert

A Place to Bury Strangers
Meow Wolf, 1352 Rufina Circle, 505-395-6369
Brooklyn-based psychedelic-rock band; 7 p.m.; \$15 in advance, \$18 day of show, meowwolf.com.

Big Head Todd and the Monsters
The Lensic
The American rock band performs in a benefit concert for Santa Fe Prep's tuition-assistance program; 8 p.m.; \$37-\$140, 505-988-1234, ticketssantafe.org.

Books/Talks

Steve Raymer
Collected Works Bookstore, 202 Galisteo St., 505-988-4226
The *National Geographic* photojournalist discusses his memoir, *Somewhere West of Lonely*; 6:30 p.m.

CLUBS, ROOMS, VENUES

Check with venues for updates and special events.

Bar Alto at Drury Plaza Hotel
828 Paseo de Peralta, 505-982-0883

The Bell Tower at La Fonda
100 E. San Francisco St., 505-982-5511

Boxcar Sports Bar & Grill
530 S. Guadalupe St., 505-988-7222

The Bridge at Santa Fe Brewing Company
37 Fire Pl., 505-557-6182

Casa España at Eldorado Hotel & Spa
309 W. San Francisco St., 505-988-4455

Chez Mamou French Café & Bakery
217 E. Palace Ave., 505-216-1845

Chili Line Brewing Company
204 N. Guadalupe St., 505-982-8474

¡Chispa! at El Mesón
213 Washington Ave., 505-983-6756

Cowgirl BBQ
319 S. Guadalupe St., 505-982-2565

Derailed at Sage Inn
725 Cerrillos Rd., 505-982-5952

Dragon Room Bar
406 Old Santa Fe Trail, 505-983-7712

Duel Brewing
1228 Parkway Dr., 505-474-5301

El Farol
808 Canyon Rd., 505-983-9912

Evangelo's
200 W. San Francisco St., 505-982-9014

Ghost
2889 Trades West Rd.

Gig Performance Space
1808 Second St., gigsantafe.com

Hilton Santa Fe
100 Sandoval St., 505-988-2811

Hotel Santa Fe
1501 Paseo de Peralta, 505-982-1200

La Boca
72 W. Marcy St., 505-982-3433

La Fiesta Lounge at La Fonda
100 E. San Francisco St., 505-982-5511

La Posada de Santa Fe Resort and Spa
330 E. Palace Ave., 505-986-0000

The Lensic
211 W. San Francisco St., 505-988-1234

Living Room Lounge at Loretto
Inn and Spa at Loretto, 211 Old Santa Fe Trail, 505-984-7905

L'Olivier Restaurant
229 Galisteo St., 505-989-1919

Los Magueyes Mexican Restaurant
31 Burro Alley, 505-992-0304

The Matador
116 W. San Francisco St., downstairs

The Mine Shaft Tavern
2846 NM 14, Madrid, 505-473-0743

On the Rocks Lounge
Camel Rock Casino, 17486-A U.S. 84/285, 505-984-8414

Osteria d'Assisi Piano Lounge
58 Federal Pl., 505-986-5858

The Palace Restaurant & Saloon
142 W. Palace Ave., 505-428-0690

Pizzeria & Trattoria da Lino
204 N. Guadalupe St., 505-982-8474

Pranzo Italian Grill
540 Montezuma Ave., 505-984-2645

Radish & Rye
548 Agua Fria St., 505-930-5325

Second Street Brewery
1814 Second St., 505-982-3030

Second Street Brewery at the Railyard
1607 Paseo de Peralta, 505-989-3278

Second Street Brewery Rufina Taproom
2920 Rufina St., 505-954-1068

Shadeh
Buffalo Thunder Resort & Casino, 20 Buffalo Thunder Trail, 877-848-6337

Starlight Lounge at Montecito
500 Rodeo Rd., 505-428-2840

Taberna La Boca
125 Lincoln Ave., 505-988-7102

TerraCotta Wine Bistro
304 Johnson St., 505-989-1166

Tiny's
1005 St. Francis Dr., 505-983-9817

Tonic
103 E. Water St., 505-982-1189

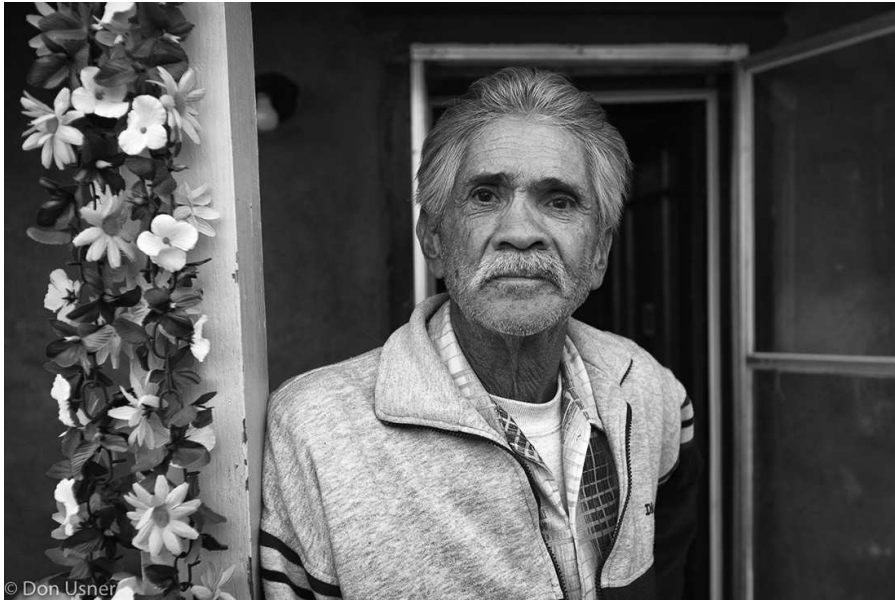
Tortilla Flats Cantina
3139 Cerrillos Rd., 505-471-8685

Tumbleroot Brewery & Distillery
2791 Agua Fria St., 505-303-3308

Upper Crust Pizza
329 Old Santa Fe Trail, 505-982-0000

Vanessie
434 W. San Francisco St., 505-982-9966

Zephyr
520 Center Dr., facebook.com/zephyrmusicandart



© Don Usner

El Zaguán (545 Canyon Rd.) shows work by Don Usner in the exhibit *Portraits of Chimayósos*. Above, *Chima*.

Classes

Arts Alive series

Museum of Indian Arts and Culture, 710 Camino Lejo, Museum Hill, 505-476-1200

All-ages pottery workshop; 10 a.m.-2 p.m.; no charge; email joyce.begay-foss@state.nm.us to reserve a space.

Events

Santa Fe Farmers Market

1607 Paseo de Peralta, 505-983-4098
7 a.m.-1 p.m.; santafefarmersmarket.com.

Santa Fe Opera Backstage Tours

Santa Fe Opera, 301 Opera Dr., 800-280-4654
Behind-the-scenes tours including production and front-of-house areas; 9 a.m. Mondays-Fridays through Aug. 24, \$10 at the box office; seniors \$8; no charge for ages 22 and under; operatours@santafeopera.org.

Nightlife

(See Page 57 for addresses)

El Farol

Canyon Road Blues Jam, 8:30 p.m.; call for cover.

La Boca

Flamenco guitarist Chuscales; 7-9 p.m.; no cover.

La Fiesta Lounge at La Fonda

Bill Hearne Trio, Americana/roots music; 7:30-11 p.m.; no cover.

Second Street Brewery

Rufina Taproom

Marion Walker, Jessie Marion Smith's rock 'n' roll art-punk project; 8:30-11:30 p.m.; no cover.

TerraCotta Wine Bistro

Jazz guitarist Pat Malone; 6-8 p.m.; no cover.

Tiny's

Open mic with John Rives and Randy Mulkey; 8-10 p.m.; no cover.

Vanessie

At the Piano Bar: Mike Nicholson; 6:30 p.m.; no cover.

WEDNESDAY 6/6

Books/Talks

Breakfast With O'Keeffe

Georgia O'Keeffe Museum Education Annex, 123 Grant Ave., 505-946-1000

Partners in Life and Art looks at the work and life of Aline and Eliot Porter; doors open at 8:30 a.m.; coffee and pastries served; talk begins at 9 a.m.; \$15 includes museum admission. Register online at okeeffemuseum.org/event.

New Mexico Museum of Art Library open house

107 W. Palace Ave., 505-476-5072

An informal opportunity to browse a variety of sources related to Pueblo Revival-style architecture and Spanish colonial revival furniture; free WiFi, so bring your laptop, tablet, or smartphone; 1-4 p.m.

Padre Martinez and New Mexico's First Printed Publications, 1834-1846

Meem Room, New Mexico History Museum, 113 Lincoln Ave., 505-476-5200

A discussion by Laurence Creider, New Mexico State University emeritus professor of archives and special collections; noon; no charge. (See story, Page 22)

Outdoors

Santa Fe Farmers Market

1607 Paseo de Peralta, 505-983-4098
3-7 p.m.; santafefarmersmarket.com.

Wells Petroglyph Preserve tours

Directions provided with reservations
Includes rugged-terrain trails; 8:30-10:30 a.m. Wednesdays and Saturdays; \$35 per person; register online, mesaprietapetroglyphs.org/visit-the-wells-petroglyph-preserve, 505-852-1351.

Events

Santa Fe Opera Backstage Tours

Santa Fe Opera, 301 Opera Dr., 800-280-4654

Behind-the-scenes tours including production and front-of-house areas 9 a.m. Mondays-Fridays through Aug. 24, \$10 at the box office; seniors \$8; no charge for ages 22 and under; operatours@santafeopera.org.

Therapeutic dance

Dance Station, 947-B W. Alameda St., 505-989-9788
Geared toward all abilities and disabilities; 2 p.m.; led by Claire Rodill; \$10, preregistration required, 505-577-8187, crodill99@gmail.com.

Nightlife

(See Page 57 for addresses)

La Fiesta Lounge at La Fonda

Tom Williams Band; 7:30-11 p.m.; no cover.

The Palace Restaurant & Saloon

Santa Fe Crooners sing selections from the *Great American Songbook*; 6:30-9:30 p.m.; no cover.

TerraCotta Wine Bistro

Latin/smooth jazz guitarist Ramon Bermudez Jr.; 6-8 p.m.; no cover.

Tiny's

Tiny's Electric Jam, with Nick Wimett and Albert Diaz; 8:30 p.m. the first and third Wednesday of the month; no cover.

Tortilla Flats Cantina

Acoustic duo Ed & Mariah; 5 p.m.-close; no cover.

Vanessie

At the Piano Bar: Mike Nicholson; 6:30 p.m.; no cover.

THURSDAY 6/7

Gallery and Museum Openings

Axle Contemporary

Look for the mobile gallery at the Railyard Pavilion
Multimedia installation by Stephen Augur, open during Santa Fe Institute's Interplanetary Festival; 11 a.m.-8:30 p.m.; visit axleart.com, 505-670-5854 or 505-670-7612; interplanetaryfest.org.

PhotoSummer

Santa Fe Railyard Shade Structure, 1607 Paseo de Peralta
Conjured Futures, projected photographic images addressing or questioning new technologies, policies, and movements shaping the future of humanity; 7-10 p.m.; no charge; presented by CENTER, a not-for-profit that supports photographers; visitcenter.org.

In Concert

Santa Fe Institute Interplanetary Festival

Railyard Plaza Mainstage, 1607 Paseo de Peralta
SciFi expo with free concerts, panels, and book signings; The Illegal Aliens (punk-rock), 1:35 p.m.; DJ Tomas O'Halloran (tech-house), 4 p.m.; The Sticky (funk), 7 p.m.; Ozomatli (Latin fusion), 8:30 p.m.; no charge, interplanetaryfest.org. (See story, Page 42)

Sunset in the Garden

Santa Fe Botanical Garden, 715 Camino Lejo, Museum Hill, 505-471-9103

Live entertainment series; tonight, country music with Bill Hearne; 5 p.m.-sunset; \$10 online and on-site, santafebotanicalgarden.org.

Theater/Dance

Extremities

Adobe Rose Theatre, 1213-B Parkway Dr., 505-629-8688
William Mastrosimone's drama exploring sexual-power politics; directed by Melissa Chambers, with Mariah Olesen, Marianna Gallegos, Nicole Bartlett, and Koppány Puszta; 7:30 p.m. Thursdays-Saturdays, 3 p.m. Sundays through June 10; \$25, discounts available, extremities.bpt.me, 800-838-3006, Ext. 1.

Rapture, Blister, Burn preview opening

Teatro Paraguas, 3205 Calle Marie, 505-424-1601
New Mexico Actors Lab presents Gina Gionfriddo's 2013 play about feminism; including Leslie Fleming-Mitchell, Madeleine Garcia, and Vanessa Ríos y Valles; 7:30 p.m. Thursdays-Saturdays, 2 p.m. Sundays through June 24; \$15, ages 18 and under \$5; brownpapertickets.com. (See story, Page 42)

Books/Talks

Interplanetary Festival book signings

Railyard Plaza Watertower, 1607 Paseo de Peralta
Martine Rothblatt (*Virtually Human: The Promise and the Peril of Digital Immortality*), 5:45-6:20 p.m.; followed by Neal Stephenson (*The Rise and Fall of D.O.D.O. and Seveneves*), 6:30-7 p.m. (See story, Page 42)

Interplanetary Festival panels

Railyard Plaza Main Stage, 1607 Paseo de Peralta
Biophysicist Shawn Douglas and digital designer Chaim Gingold kick off free discussion panels with *Sandboxes to Think & Play With*; 12:50 p.m.; other speakers cover subjects including *Planetary Regulation, Rules, and Law* and *Time Design: Aging and Adaptation*; visit interplanetaryfest.org for details. (See story, Page 42)

Interplanetary Festival presentations

Santa Fe Farmers Market Pavilion, 1607 Paseo de Peralta

1:45 p.m.: Chaim Gingold, creator of the interactive digital book, *Earth Primer*; 4 p.m.: Women's International Study Center fellow in residence Shay Youngblood discusses her biography about Raye J. Montague, the U.S. Naval clerk credited with revolutionizing designs of ships and submarines on a computer (*Engineered for Greatness*); 4 p.m.; register online at wisc-amh.org; free event. (See story, Page 42)

Jeffrey Wilson

Collected Works Bookstore, 202 Galisteo St., 505-988-4226

The graphic novelist discusses *The Instinct for Cooperation: A Graphic Novel Conversation with Noam Chomsky*; 6:30 p.m. (See *Subtexts*, Page 20)

Natalie Goldberg

Garcia Street Books, 376 Garcia St., 505-986-0151

The author discusses and signs copies of her memoir, *Let the Whole Thundering World Come Home*; 6 p.m.

What's Your Vision?

Graphic Sky Printing, 3218-A Calle Marie, 505-473-1120

A talk by members of the nonprofit Association of Publishers for Special Sales New Mexico; noon-1:30 p.m.; 505-663-6709, bookapss.org.

Classes

Arts Alive series

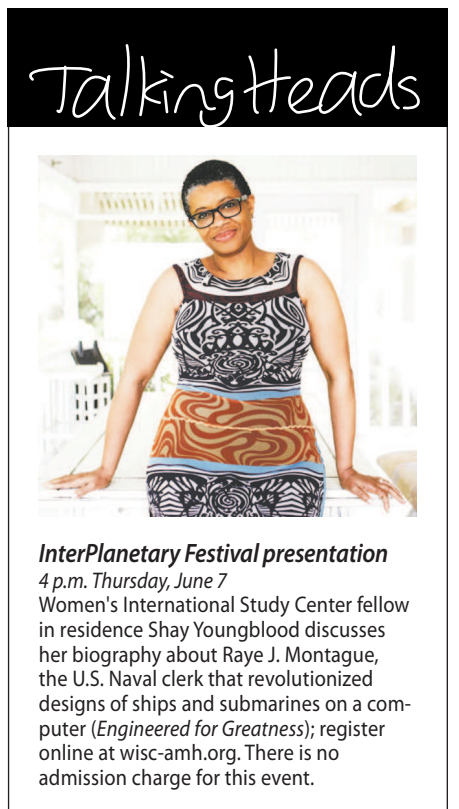
Museum of Indian Arts and Culture, 710 Camino Lejo, Museum Hill, 505-476-1200

All-ages beadwork workshop; 10 a.m.-2 p.m.; no charge; email joyce.begay-foss@state.nm.us to reserve a space.

Events

New Mexico School for the Arts Presents Young Masters

Form & Concept, 435 S. Guadalupe St., 505-982-8111
End-of-the-semester showcase of student musicians, writers, and poets; 6 p.m.; no charge.



Interplanetary Festival presentation

4 p.m. Thursday, June 7
Women's International Study Center fellow in residence Shay Youngblood discusses her biography about Raye J. Montague, the U.S. Naval clerk that revolutionized designs of ships and submarines on a computer (*Engineered for Greatness*); register online at wisc-amh.org. There is no admission charge for this event.

Santa Fe Institute InterPlanetary Festival

Railyard Plaza, 1607 Paseo de Peralta
The theoretical research facility hosts free open-air lectures, panel discussions, games, and ticketed sci-fi film screenings centered around the longterm sustainability of life on Earth; 11 a.m.-midnight; visit interplanetaryfest.org for schedule of events; continues Friday, June 8. (See story, Page 42)

Santa Fe Opera Backstage Tours

Santa Fe Opera, 301 Opera Dr., 800-280-4654
Behind-the-scenes tours including production and front-of-house areas; 9 a.m. Mondays-Fridays through Aug. 24, \$10 at the box office; seniors \$8; no charge for ages 22 and under; operatours@santafeopera.org.

Nightlife

(See Page 57 for addresses)

El Farol

Got Soul, with Hillary Smith; 7-10 p.m.; call for cover.

La Fiesta Lounge at La Fonda

Tom Williams Band; 7:30-11 p.m.; no cover.

The Matador

DJ Inky spinning punk/funk/trance/old school; 9 p.m.-close; no cover.

Santa Fe Brewery Rufina Taproom

8:30 p.m.; call for cover.

Second Street Brewery

Folk singer Garry Blackchild; 6-9 p.m.; no cover.

TerraCotta Wine Bistro

Jazz guitarist Pat Malone; 6-8 p.m.; no cover.

Vanessie

At the Piano Bar: Mike Nicholson; 6:30 p.m.; no cover.

OUT OF TOWN

Albuquerque

516 Arts

516 Central Ave., S.W., 505-242-1445

21st Century Cyphers, group exhibit about the phenomenon of language in the technological age; through July 14. Ancillary artist talks: Bart Exposito and Walter Robinson discuss their works on exhibit; 6 p.m. Thursday, June 7.

Chatter Sunday

Las Puertas, 1512 First St., N.W., 505-244-0290

The ensemble performs music of Rameau, Vasks, and Mozart; 10:30 a.m. Sunday, June 3; \$5-\$15; chatterabq.org/boxoffice.

Cimarron

ShortGrass Music Festival

Cimarroncita/Ute Park, 11 miles west of the town of Cimarron off NM 64

Zorá String Quartet; 7 p.m. Friday, June 1; \$15; students 18 and under no charge, 888-376-2417, shortgrassfestival.com.

El Prado

Maggie

Overland Ranch, 1405 Paseo del Pueblo Norte, 781-248-0166

Paintings by Nora Anthony; opening reception 5-7 p.m. Saturday, June 2; on view through June.

Los Alamos

New Mexico Bats

Los Alamos Nature Center, 2600 Canyon Rd.

Meet native bats as Justin Stevenson of Fightwms discusses their biology and behavior; Wednesday, June 6, 6:30 p.m.; \$5 per family.

Valles Caldera Cultural History: The Race to Record Early Carvings

Los Alamos Nature Center, 2600 Canyon Rd.

Craig Martin and Colleen Olinger discuss dendroglyphs in the bark of aspen trees; Tuesday, June 5, 7 p.m.; no charge.

WindSync

Duane Smith Auditorium, Los Alamos High School campus, 1300 Diamond Dr.

Houston-based wind quintet; 4 p.m. Sunday, June 3; music of Miguel Del Aguila and the ensemble's *Voyager Golden Record Suite*; \$35, 505-988-1234, ticketsantafe.org, \$40 at the door.

Mora

Victory Alpaca Ranch tours

MM1 NM 434, 575-387-2254

Open 10 a.m.-4 p.m. Fridays-Mondays through the summer; educational and hand-feeding tours 11 a.m., 1, and 3 p.m.; \$6; 24-hour advance reservations requested. alpacas@victoryranch.com.

PEOPLE WHO NEED PEOPLE

Artists

Española Valley Fiber Arts Center

Volunteer board members sought for the non-profit organization that cultivates education and economic development of the craft; call Kathy for details, 505-989-7015.

Fulcrum Fund Grant Program

516 Arts in partnership with Andy Warhol Foundation for the Visual Arts will award \$2,000-\$10,000 (totaling \$60,000) this year for artist-organized collaborative projects within an 80-mile radius of Albuquerque; information session Saturday, June 23, 2-4 p.m. at CCA, 1050 Old Pecos Trail, Santa Fe; application lab Saturday, July 14, 10 a.m.-noon at 516 Arts.

Authors/Publishers

New Mexico & Arizona Book Awards

New Mexico Book Co-op is accepting submissions of books published after Jan. 1 with a direct connection to Arizona or New Mexico through subject, author, or publisher; entries must be received no later than July 1; nmbookcoop.com.

Community

Awesome Foundation Santa Fe grant

A \$1,000 micro-grant awarded to individuals and groups with science, technology, art, and education projects aimed at making the city a better place to live; submissions due by Friday, June 1; email santafe@awesomfoundation.org or visit facebook.com/awesomfoundation for details.

Communities in Schools New Mexico

Needed: volunteers to help with food distribution; also, math and literacy support during and after school; especially individuals with training in TESOL (Teaching English to Speakers of Other Languages) and Spanish speakers; email volunteer@cisnm.org to inquire about orientation. Visit cisnm.org/ volunteer for more information.

Many Mothers

Offer your time and experience helping first-time mothers care for their newborns; and or volunteer for fundraising events or other tasks related to running our organization; manymothers.org, 505-983-5984.

Presbyterian Medical Services

Year-round volunteers sought as companions to hospice patients and also for Flower Angels, who distribute fresh-cut bouquets to hospice patients and their families each week. Contact Mary Ann Andrews, hospice volunteer coordinator, at 505-988-2211.

Thoma Foundation Fellowships in Spanish Colonial Art

Pre- and post-doctoral scholars may apply for \$45,000 and \$60,000 respectively; also, awards of up to \$15,000 available for independent scholars and advanced graduate students. Recipients selected by three-judge jury; deadline Oct. 15; thomafoundation.org.



East of West Gallery (2351 Fox Rd., Suite 600) shows photographs by Beya Khalifa.

Filmmakers

Santa Fe Independent Film Festival

Call for entries for the October festival accepted through Wednesday, Aug. 1; submission forms at withoutabox.com/santafe or filmfreeway.com/festival/santafeindependentfilmfestival. Submissions coordinator Jena Braziel, jena@santafeindependent.com, 505-349-1414.

Performers

Santa Fe Improv

Auditions held 1-3:30 p.m. Saturday and Sunday, June 2 and 3; 6-8:30 p.m. Tuesday, June 5; no experience necessary; santafeimprov.com; email santafeimprov.com. Improv classes for ages 14-18; June 11-July 30; \$151.64; kita@santafeimprov.com.

Seeking Zozobra 2018 Singers

All ages invited by Santa Fe Kiwanis to audition for performing the national anthem at the 94th Burning of Zozobra, held on Friday, Aug. 31; first runner-up to sing anthem at the Fourth of July celebration at Villa Linda Park; second runner-up will sing at the Santa Fe Plaza New Year's Eve celebration. Apply at burnzozobra.com/nationalanthem; deadline Friday, June 15; auditions Saturday, June 16, 2-4:30 p.m. at the New Mexico School for the Arts, 275 E. Alameda St.

PASA KIDS

Garden Sprouts

Santa Fe Botanical Garden, 725 Camino Lejo, Museum Hill, 505-471-9103

Storytelling and hands-on activities for children ages 3-5 accompanied by adult; 10-11 a.m. weekly on Fridays as weather allows; \$5 suggested donation; santafebotanicalgarden.org

Santa Fe Children's Museum

1050 Old Pecos Trail, 505-989-8359

Open Art Studio; 2:30-4:30 p.m. Fridays; meet Cornelius the corn snake 3 p.m. Sundays; by museum admission; no charge 4-6:30 p.m. Thursdays.

Museum of Encaustic Art children's tour

632 Agua Fria St., 505-989-3283

Free hands-on paintings demonstrations geared toward ages 6-14; Saturdays, by appointment.

Sand Day Saturdays

Railyard Park Children's Play Area

Children ages 1-4 and their parents have fun with sand, water, rocks, funnels, tubes, and buckets; 10 a.m.-noon through August 11; no charge; railyardpark.org.

Arts Alive series

Museum of Indian Arts and Culture, 710 Camino Lejo, Museum Hill, 505-476-1200

All-ages pottery workshop; Tuesday, June 5; 10 a.m.-2 p.m.; no charge; email joyce.begay-foss@state.nm.us to reserve a space.

Puppet Lab

David Loughridge Learning Center, Meow Wolf, 1352 Rufina Circle, 505-395-6369

Puppet-performance techniques; 9-11 a.m. Wednesdays through Sept. 1; puppet fabrication; 6:30-8:30 p.m. Wednesdays through Aug. 29; visit meowwolf.com/event/puppetry-workshop.

Santa Fe Public Library Spanish/Bilingual Books and Babies program

All branches

Books, songs, and games for families with children ages 6 months to 2 years, through Wednesday, July 25; 1 p.m. Tuesdays: Oliver La Farge Branch, 1730 Llano St., 505-955-4863; 10:30 a.m. Wednesdays: Main Branch, 145 Washington Ave., 505-955-6783; 4 p.m. Wednesdays: Southside Branch, 6599 Jaguar Dr., 505-955-2828.

Santa Fe Children's Chess Club

Community Room, Santa Fe Public Library, Main Branch, 145 Washington Ave., 505-955-6780

Meets 5:45-7:45 p.m. Wednesdays; no charge.

Arts Alive series

Museum of Indian Arts and Culture, 710 Camino Lejo, Museum Hill, 505-476-1200

All-ages beadwork workshop; Thursday, June 7; 10 a.m.-2 p.m.; no charge; email joyce.begay-foss@state.nm.us to reserve a space. ◀

IN THE WINGS

NEXT WEEK

Ricardo Mazal: A 15-Year Survey

Center for Contemporary Arts, 1050 Old Pecos Trail, 505-982-1338

Paintings, video installation, and photographs; opening Friday, June 8; on view through Sept. 9.

Edible Art Tour

Canyon Road and downtown restaurants and galleries

ARTsmart New Mexico's annual fundraising event pairs art with dining during this self-guided tour; Friday and Saturday, June 8 and 9, \$35, artsmartnm.org, 505-992-2787.

Currents New Media 2018

El Museo Cultural de Santa Fe, 555 Camino de la Familia, 505-992-0591

Opening night of the main exhibit of interactive installations runs 6 p.m.-midnight Friday, June 8, with concurrent events held indoors and at the Railyard through Sunday, June 10; \$5 suggested donation for entry to the exhibit; currentsnewmedia.org/festivals/currents.

Reviva

Meow Wolf, 1352 Rufina Circle, 505-395-6369

Burqueño reggae-rock band; 8 p.m. Friday, June 8; Citizens of Tape City open; \$15, meowwolf.com.

40th Annual Challenge New Mexico Arts & Crafts Festival

Downtown Plaza

Hand-crafted goods by 150-plus artists; 9 a.m.-5 p.m. Saturday and Sunday, June 9 and 10; proceeds from booth fees benefit the Challenge New Mexico Therapeutic Riding Program; challengenewmexico.com, 505-470-9088.

Chatter (in)SITE

SITE Santa Fe, 1606 Paseo de Peralta, 505-989-1199

Music of Lindberg and Mozart; performers include violist Guillermo Figueroa and cellist Dana Winograd; 10:30 a.m. Saturday, June 9; \$15, discounts available; chatterabq.org/boxoffice, or if available, at the door.

Michael Franti and Spearhead

Kit Carson Park, 211 Paseo del Pueblo Norte, Taos

Old-school reggae and R&B; 6 p.m. Saturday, June 9; \$52 in advance, \$58 day of show, ampconcerts.org or holdmyticket.com/event/310575.

The Art of Change

The Lensic

Santa Fe Art Institute presents a performance by Storycatchers Theatre; also, a community conversation with *This American Life* host Ira Glass and presentations by SFAl artists on how storytelling transforms communities; 6:30 p.m. Saturday, June 9; \$15-\$30, ticketssantafe.org, 505-988-1234.

Displaced Horizons

SITE Santa Fe, 1606 Paseo de Peralta, 505-989-1199

An interactive multimedia performance encouraging re-creation of current water systems; by composers Chris Jonas and Robert Lundberg and video artist Dylan McLaughlin; 7:30 p.m. Saturday, June 9; held in conjunction with Currents New Media festival; \$15 general admission, students \$10; sitesantafe.org/events.

Itchy-O

Meow Wolf, 1352 Rufina Circle, 505-395-6369

Denver-based alternative-punk-rock marching band; doors 8 p.m. Saturday, June 9; 21+; all-ages performance, doors 7 p.m. Sunday, June 10; \$25, \$30 day of show, meowwolf.com.

Concordia Santa Fe Wind Orchestra

St. Francis Auditorium, New Mexico Museum of Art, 107 W. Palace Ave., 505-476-5072

To the Moon and Back, music of Bach, Biedendbender, Reed, Grainger, and others; led by Mary Schneider; 2 p.m. Sunday, June 10; no charge; concordiasantafe.org.

Flatbush Zombies

The Bridge at Santa Fe Brewing Company, 37 Fire Pl., 505-557-6182

Brooklyn-based rap crew that channels the 1990s East Coast rap era; 6:30 p.m. Monday, June 11; general admission \$25, early-entry package \$65; holdmyticket.com/tickets/307755.

Music on the Hill

St. John's College, 1160 Camino de Cruz Blanca, 505-984-6199

An annual free, family-friendly outdoor concert series, held 6-8 p.m. Wednesdays; this season's lineup jazz saxophonist Doug Lawrence (opening night, Wednesday, June 13), R&B singer/songwriter Tracey Whitney (June 20), and Jimmy Stadler's rock band (July 11); visit sjc.edu/santa-fe/events/music-on-the-hill for schedule and details for free shuttles.



Violist Guillermo Figueroa performs at SITE Santa Fe June 9.

Calexico

The Bridge at Santa Fe Brewing, 37 Fire Pl., 505-557-6182

Southwestern indie-rock; 7:30 p.m. Wednesday, June 13; Julia Jacklin opens; \$28 in advance, \$33 day of show, holdmyticket.com/tickets/305786.

Mitski

Meow Wolf, 1352 Rufina Circle, 505-395-6369

American singer-songwriter Mitski Miyawaki; 7 p.m. Thursday, June 14; Katie von Schleicher opens; \$15 in advance, \$18 day of show, meowwolf.com.

COMING UP

MUSIC

Santa Fe Music Collective jazz series

Museum Hill Café, 710 Camino Lejo

7 p.m. Friday, June 15: pianist Dan Trudell in concert with bassist Colin Deuble and percussionist John Trentacosta; 7 p.m. Friday, June 22: guitarist Marcos Cavalcante, pianist Mariano Morales, bassist Justin Bransford, and Trentacosta; 7 p.m. Friday, July 6: trumpeter Michael Morreale's quartet; all concerts \$25; 505-946-7934, santafemusiccollective.org.

Mija

Meow Wolf, 1352 Rufina Circle, 505-395-6369

Electronic-music producer and DJ; doors 9 p.m. Saturday, June 16; \$20 in advance, \$25 day of show, meowwolf.com.

New Mexico Performing Arts Society season finale

Immaculate Heart of Mary Chapel, 50 Mount Carmel Rd., 505-988-1975

Franz Vote leads the ensemble in music of Donizetti, Gounod, Strauss, and Verdi; 5:30 p.m. Sunday, June 17; \$23-\$35, holdmyticket.com/tickets/291819.

16th Annual Santa Fe Bandstand

Downtown Plaza

Outside In Productions' free outdoor concert series opens with veteran rock singer/songwriter Chuck Prophet on June 21; lineup includes Marcia Ball (July 19), L.A.-based Cuban-roots band Changüi Majadero (July 28), Joy Harjo (Aug. 15), and closing out the season, Meow Wolf's Monster Battle Party (Aug. 25); visit santafebandstand.org for schedule updates.

Snow Tha Product

The Bridge at Santa Fe Brewing Company, 37 Fire Pl., 505-557-6182

Rapper, on Vibe Higher Tour 2018; doors 6:30 p.m. Wednesday, June 27; general admission \$29.50, VIP package \$90, holdmyticket.com/tickets/312465.

Dirty Projectors

Meow Wolf, 1352 Rufina Circle, 505-395-6369

Indie-rock; doors 7 p.m. Thursday, June 28; Still Woozy opens; \$20 in advance, \$25 day of show, meowwolf.com.

Santa Fe Opera

301 Opera Dr., 800-280-4654

Laurent Pelly's production of Bernstein's *Candide* opens the 62nd season on June 29 with soprano Brenda Rae and tenor Alek Shrader in the roles of Cunegonde and Candide. Puccini's *Madama Butterfly*; composer John Adams and librettist Peter Sellars' *Doctor Atomic*; Rossini's *The Italian Girl*; and Strauss' *Ariadne auf Naxos* round out the season; tickets available online at santafeopera.org/operas-and-ticketing.

THEATER/DANCE

The Rocky Horror Show

Santa Fe Playhouse, 142 E. DeVargas St., 505-988-4262

Dr. Frank N. Furter et al.; 7:30 p.m. Thursdays-Saturdays; 2 p.m. Sundays, June 14-July 1; preview performance \$15, general admission \$25, discounts available, opening-night gala \$30, santafeplayhouse.org.

EntreFlamenco Santa Fe

El Flamenco Restaurant, 135 W. Palace Ave., second floor, 505-209-1302

Summer season, June 29-Sept. 2: Featuring Vaiven Flamenco jazz-fusion trio on Mondays, flutist Ronald Roybal on Tuesdays, and dancer Antonio Granjero's company EntreFlamenco performing Wednesdays-Sundays; tickets range from \$25 to \$40, entreflamenco.com.

EVENTS, Etc.

Depressed Cake Shop

David Loughridge Learning Center, Meow Wolf, 1352 Rufina Circle, 505-395-6369

A social-justice baked-goods sale held in support of local mental-health resources to increase free counseling services; noon-6 p.m. Saturday, June 16; meowwolf.com.

AgeNation: The Ageless Living Conference

The Lensic

Speakers include authors David Suzuki (*The Legacy*); Thomas Moore (*Ageless Soul: Becoming an Authentic Person Over Time*), and Lee Zlotoff (*The MacGyver Secret: How to Connect to the Gift of Intuition*); 7 p.m. Saturday, 9 a.m. Sunday, June 16 and 17; 7 p.m. Friday, 9 a.m. Saturday, Sept. 7 and 8; \$49-\$139, 505-988-1234, ticketssantafe.org.

Santa Fe Institute Community Lecture

The Lensic

Fundamentals of Time in Physical & Adaptive Systems; panelists David Krakauer, James Hartle, and Sean Carroll cover physics fundamentals and the concept of time; Tuesday, June 19, 7:30 p.m.; tickets required for this free lecture series, 505-988-1234, ticketssantafe.org.

69th Annual Rodeo de Santa Fe

Santa Fe Rodeo Grounds, 3237 Rodeo Rd.

Opening Wednesday, June 20, and running through Saturday, June 23; this year's specialty act: charro Tomás Garcilazo and his horse Latigo Dun It "Hollywood"; \$17-\$37, 505-988-1234, ticketssantafe.org, rodeosantafe.org, 505-471-4300.

School for Advanced Research 40th anniversary

Poeh Cultural Center, 78 Cities of Gold Rd., 505-455-5041

Theme: *Honoring Forty Years of Creativity in Native American Arts*; with a presentation by artist Nora Naranjo Morse, music, food, and live/silent auctions; 6-10 p.m. Friday, June 22; \$150 in advance at sarweb.org/iarc/iarc40/celebration.

10th Annual Cocktails for Critters

Private residence

Food, wine, and music by dance band ZigZag; also, art and gift auction; with MC Ali MacGraw; 2-5 p.m. Sunday, June 24, \$75, register online at fandnm.org or send checks to Felines & Friends, 369 Montezuma Ave., #320, Santa Fe, NM, 87501; venue information provided with registration.

Bee Hive Kids Books Summer Writing Workshop

328 Montezuma Ave., 505-780-8051

Fantasy, graphic novels, and journal-making; 9 a.m.-1 p.m. Tuesday-Friday, June 26-29; Monday-Friday, July 30-Aug. 3; \$185, \$50 sign-up fee; call to register for this class geared for ages 9 and up.

Santa Fe Opera Ranch Tours

301 Opera Dr., 800-280-4654

Extended tour of the grounds; meet at the box office at 10 a.m. Fridays, June 29, July 27, and Aug. 24; \$10, no reservations required, 505-946-2407, operatours@santafeopera.org.

Wine Festival

El Rancho de las Golondrinas, 334 Los Pinos Rd., 505-471-2261

An annual affair with tastings of New Mexico-crafted wines, food, arts & crafts booths, and music; noon-6 p.m. Saturday and Sunday, June 30 and July 1; \$18 includes wine glass; youth 13-20 \$5; children 12 and under no charge.

Black & White Ball

Eldorado Hotel & Spa, 309 W. San Francisco St., 505-988-4455

Dinner, dancing, luminaria tribute, photo booth, and live and silent auctions to benefit the American Cancer Society; 5:30 p.m. Saturday, June 30; \$175, \$100 to enter diamond-bar raffle; acsalb.ejoinme.org/santafegala.

FAR OUT

MUSIC

13th Annual New Mexico Jazz Festival

Santa Fe and Albuquerque

The season opens in Albuquerque July 11 with the Tootie Heath Trio at the African American Performing Arts Center and continues through July; including concerts by the Spanish Harlem Orchestra, Charles McPherson Quartet, Cuban pianists Chucho Valdéz and Gonzalo Rubalcaba, and NEA Jazz Master Dee Dee Bridgewater; tickets available at the Lensic box office, 505-988-1234, ticketssantafe.org, and Outpost Performance Space box office, outpostspace.org, 505-268-0044.

46th Annual Santa Fe Chamber Music Festival

St. Francis Auditorium, New Mexico Museum of Art, 107 W. Palace Ave., and the Lensic, 211 W. San Francisco St.

Running from July 15 to August 20 and presenting 40-plus concerts, the festival includes performances of Walton's *Façade: An Entertainment* with actor John Rubinstein and soprano Lucy Shelton; Haydn's *The Seven Last Words of Christ on the Cross*, with the Orion String Quartet, and festival debut artists pianist Gilles Vonsattel, the Zebra Trio, and the New York Philharmonic String Quartet; flexpasses available at the box office, 208 Griffin St., 505-982-1890; santafechambermusic.com.

Santa Fe Desert Chorale Summer Festival

Cathedral Basilica of St. Francis of Assisi, 131 Cathedral Pl.; Church of the Holy Faith, 311 E. Palace Ave.; Cristo Rey Church, 1120 Canyon Rd.

The 2018 festival begins July 21 with *Bernstein, Bolcom, and Barber: Twentieth Century American Masters*; followed by *Sure on This Shining Night: Choral Works That Evoke the Beauty of the Natural World* on July 29, and continuing with *The New World: Journey From the Inca Trail* Aug. 2; tickets \$10-\$85; desertchorale.org/2018-summer-festival.

Performance Santa Fe's 82nd season

The Lensic, Scottish Rite Center, and St. Francis Auditorium

Including Daniel Ulbricht and the Stars of American Ballet (Aug. 3 and 4), Julian Sands' one-man show *A Celebration of Harold Pinter* (Sept. 21), SFJAZZ Collective (Oct. 12), Venice Baroque Orchestra with Anna Fusek (Oct. 30), Catherine Russell & John Pizzarelli in *A Salute to Billie Holiday and Frank Sinatra* (Dec. 8), Peter Rothstein's musical *All Is Calm: The Christmas Truce of 1914* (Dec. 20), dance troupe Bodytraffic (Feb. 5, 2019), Delfeayo Marsalis with the Uptown Jazz Orchestra (March 1, 2019), and Havana Cuba All-Stars: *Asere!* (March 29, 2019); subscriptions available at performancesantafe.org; individual tickets sold at PSF and the Lensic beginning June 4.

Tinariwen

Meow Wolf, 1352 Rufina Circle, 505-395-6369

Rock band from Mali; doors 7 p.m. Monday, Aug. 20; \$30 in advance, \$33 day of show, meowwolf.com.

WAR

The band with original frontman Leroy "Lonnie" Jordan brings its signature funk hits of the '70s; 8 p.m. Saturday, Aug. 25; tickets start at \$29; hiltonbuffalothunder.com/entertainment.

EVENTS, Etc.

A Disruptive Futures Dialogue

The Lensic

The Santa Fe Opera presents a conversation with stage director Peter Sellars, moderated by Sam Donaldson; 3 p.m. Sunday, July 8; \$5, ticketssantafe.org, 505-988-1234.

Art Santa Fe 2018 Contemporary Art Show

Santa Fe Community Convention Center, 201 W. Marcy St., 800-777-2489

International and local artists, galleries, and art institutions offering art labs and talks; opening-night preview party 5-9 p.m. Thursday, July 12; regular show hours noon-7 p.m. Friday and Saturday, 11 a.m.-5 p.m. Sunday, July 13-15; preview party \$100, 3-day pass \$25, 1-day pass \$20, discounts available, artsantafe.com/attend/tickets.

Santa Fe Opera Tech and the West 2018

New Mexico History Museum, 113 Lincoln Ave., 505-476-5200 and the Lensic, 211 W. San Francisco St., 505-988-1234

A symposium held Friday and Saturday, July 13 and 14, in conjunction with the opera *Dr. Atomic*; opening address by Rachel Bronson, executive director of *Bulletin of Atomic Scientists*; Friday panel discussions: *A Sense of Place*, with multimedia artist Meridel Rubenstein and photographer/artist Will Wilson (Diné); *Beyond Dr. Atomic: Women's Voices and Visions*, with Tina Cordova, director of the Tularosa Basin Downwinders Consortium, Beata Tsoosie-Peña of Tewa Women United, and others; register online at santafeopera.org/discover/symposium/tech-and-the-west.



National Endowment for the Arts jazz master Dee Dee Bridgewater performs July 27 during the New Mexico Jazz Festival.

International Folk Art Market at Museum Hill

6:30 p.m. Friday, July 13, opening party, *A Global Gathering Under the Stars*, shopping, music, and refreshments; \$225 in advance; 7:30-10 a.m. Saturday, July 14, Early Bird Market; \$85 (includes all-day market admission); 10 a.m.-5:30 p.m. general admission \$15 (\$20 beginning June 15); 9 a.m.-5 p.m. Sunday, July 15; \$10 (\$15 beginning June 15); purchase tickets online at folkartmarket.org.

The Fence 2018

Railyard Park, Paseo de Peralta and South Guadalupe Street

An annual outdoor exhibit of works by 50-plus New Mexico photographers; presented by the American Society of Media Photographers of New Mexico and United Photo Industries; grand-opening event planned for Saturday, July 21; on view through Oct. 27; thefencenm.org.

¡Viva la Cultura! and the 67th Annual Traditional Spanish Market

Throughout Santa Fe; market held on the Plaza

The week-long celebration includes lectures series, culinary events, film screenings, and musical performances culminating in the outdoor market featuring colcha embroidery, straw appliqué, jewelry, pottery, ironwork, and furniture handcrafted by artists from New Mexico and Southern Colorado; market preview Friday, July 27, at El Museo Cultural de Santa Fe; market runs Saturday and Sunday, July 28 and 29; spanishcolonial.org.

SITELINES 2018: Casa Tomada

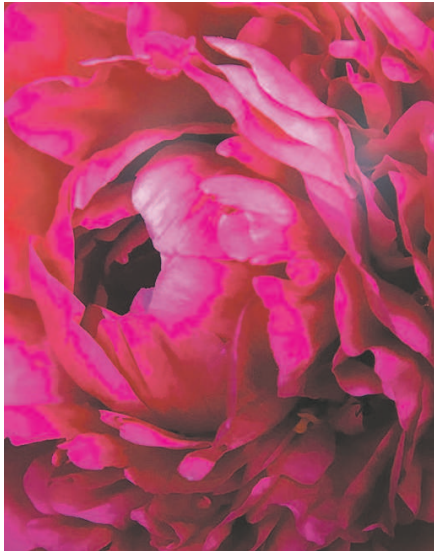
SITE Santa Fe, 1606 Paseo de Peralta, 505-989-1199

Biennial exhibit dedicated to new art throughout the Americas; First Look Preview and gala Wednesday, Aug. 1; opening-night party Thursday, Aug. 2; public opening Friday, Aug. 3; community open house Saturday, Aug. 4; visit sitesantafe.org for updates.

Taos Vortex

Kit Carson Park, 211 Paseo del Pueblo Norte, Taos

Meow Wolf presents its outdoor event held Friday and Saturday, Aug. 3 and 4; including The Flaming Lips, Thievery Corporation, and DJ Matthew Dear; also, performance artists and art installations; camping on site; \$69-\$199, taosvortex.com.



Webster Collection (54½ Lincoln Ave.) shows photographs by Marion Claire Wasserman.

AT THE GALLERIES

Blue Rain Gallery

544 S. Guadalupe St., 505-954-9902

Neo-Cultural Narratives: A Group Exhibition, Starr Hardridge, Dan Friday, and others; through June 9.

Turner Carroll Gallery

725 Canyon Rd., 505-986-9800

Coded Language, mixed-media assemblages by Walter Robinson and paintings by Jamie Brunson; through Wednesday, June 6.

LIBRARIES

Catherine McElvain Library

School for Advanced Research, 660 Garcia St., 505-954-7234

Collections include research on human prehistory, sociology, and ethnographic studies; library catalog available online at library.sarsf.org; open 10 a.m.-5 p.m. Mondays-Fridays; sarweb.org/education/catherine-mcelvain-library.

Faith and John Meem Library

St. John's College, 1160 Camino de Cruz Blanca, 505-984-6042

Program readings, online databases, and interlibrary loans of ancient and modern classics; open daily at various times; sjc.edu/academic-programs/libraries/meem-library/community-service.

Fray Angélico Chávez History Library

Palace of the Governors, 120 Washington Ave., 505-476-5090

Closed-stacks facility preserving historical materials from pre-European contact to the present; open by appointment only; historylibrary@state.nm.us.

Institute of American Indian Arts Library

83 Avan Nu Po Rd., 505-424-5715

Archives documenting the history of IAIA, the contemporary Native-art movement, and American Indian education; visit iaia.edu/academics/library to search articles, books, e-books, and files; open daily; iaia.libguides.com/libraryhours.

Laboratory of Anthropology Library

Museum of Indian Arts & Culture, 710 Camino Lejo, Museum Hill, 505-476-1264

Closed-stacks collections include research materials on Native cultures and rare books; open to the public 1-5 p.m. Mondays-Fridays by appointment only; library.indianartsandculture.org.

New Mexico State Library

1209 Camino Carlos Rey, upstairs, 505-476-9702

Upstairs: state and federal documents and books; open 1-5 p.m. Mondays-Wednesdays; downstairs: Southwest collection, archives, and records; open 1-5 p.m. Thursdays and Fridays; nmstatelibrary.org.

Quimby Memorial Library

Southwestern College, 3960 San Felipe Rd., 505-467-6825

Rare books and collections of metaphysical materials; open various hours Mondays-Saturdays; library@swc.edu; swc.edu/about-the-library.

Santa Fe Community College Library

6401 Richards Ave., 505-428-1352

Electronic books, text journals, newspapers, art images, and educational streaming videos; open various hours Mondays-Saturdays, sfcc.edu/library.

Santa Fe Institute

1399 Hyde Park Rd., 505-984-8800

Collections include print, digital, and media formats. Open 1-5 p.m. Mondays-Fridays; library@santafe.edu; santafe.edu/library.

Santa Fe Public Library Main Branch

145 Washington Ave., 505-955-6780

All branches provide computers, WiFi, and interlibrary loans. Open 10 a.m.-8 p.m. Mondays-Thursday; 10 a.m.-6 p.m. Fridays and Saturdays; 1-5 p.m. Sundays; sflibrary.org.

Santa Fe Public Library Oliver La Farge Branch

1730 Llano St., 505-955-4860

Open 10 a.m.-8 p.m. Mondays-Wednesdays; 10 a.m.-6 p.m. Thursdays-Saturdays; closed Sundays; sflibrary.org.

Santa Fe Public Library Southside Branch

6599 Jaguar Dr., 505-955-2810

Open 10:30 a.m.-8 p.m. Mondays-Thursday; 10:30 a.m.-6 p.m. Fridays and Saturdays; 1-5 p.m. Sundays; sflibrary.org.

State Supreme Court Law Library

237 Don Gaspar Ave., 505-827-4850

Reference librarians available to assist the public 8 a.m.-5 p.m. Mondays-Fridays; reference and circulation services available 8 a.m.-4:45 p.m. Mondays-Fridays; lawlibrary.nmcourts.gov; email libref@nmcourts.gov to speak to a librarian.

MUSEUMS & ART SPACES

Santa Fe

Center for Contemporary Arts

1050 Old Pecos Trail, 505-982-1338

Monte del Sol student exhibit of multidisciplinary works; in the Tank Garage Galleries and Sculpture Garden; closing Friday, May 18 • *Clip of Petals*, mixed-media work by Joerael Elliott; in the Cinematheque Gallery through Aug. 5. Days of operation available at ccasantafe.org.

Georgia O'Keeffe Museum

217 Johnson St., 505-946-1000

The Black Place: Georgia O'Keeffe and Michael Namingha, installation of paintings, drawings, and photographs; through Sept. 14 • *My New Yorks* • *Preserving a Legacy: Frames of Mine* • *O'Keeffe's New Mexico* • *The Wideness and Wonder of the World*. Open daily; okeeffemuseum.org.

IAIA Museum of Contemporary Native Arts

108 Cathedral Pl., 888-922-4242

Action Abstraction Redefined, works created in the 1960s and 1970s from the museum's permanent collection; through July 7 • *Without Boundaries: Visual Conversations*, group show of works encouraging social action on issues from decolonization to climate change; through July 29 • *Rolande Souliere: Form and Content*, mural; through Jan. 27, 2019. Closed Tuesdays; iaia.edu/museum.

Meow Wolf Art Complex

1352 Rufina Circle, 505-395-6369

The House of Eternal Return, permanent interactive installation. Closed Tuesdays; meowwolf.com.

Museum of Encaustic Art

632 Agua Fria St., 505-989-3283

Paintings, mixed media, sculpture, and monotypes. Closed Mondays; moeart.org.

Museum of Indian Arts & Culture

710 Camino Lejo, Museum Hill, 505-476-1269

Lifeways of the Southern Athabaskans, Apache

basketry, beaded articles of clothing, weapons, and other objects dating from the late 1880s to the present; through July 7, 2019 • *Stepping*

Out: 10,000 Years of Walking in the West, a collection of historic and contemporary footwear; through Sept. 3 • *Here, Now, and Always*, artifacts from the museum collection • *The Buchsbaum Gallery of Southwestern Pottery*, core exhibit of contemporary and traditional works. Open daily; indianartsandculture.org.

Museum of International Folk Art

706 Camino Lejo, Museum Hill, 505-476-1200

Beadwork Adorns the World, historic and contemporary examples of how the use of beads reflects cultural identity; through Feb. 3, 2019 • *Negotiate, Navigate, Innovate*, interactive exhibit • *Artistic Heritage: Syrian Folk Art*, objects from the museum's permanent collection • *Crafting Memory: The Art of Community in Peru*, contemporary folk art, through March 10, 2019 • *No Idle Hands: The Myths & Meanings of Tramp Art*, chip-carved woodwork; through Sept. 16 • *Multiple Visions: A Common Bond*, toys and folk art; internationalfolkart.org; open daily.

Museum of Spanish Colonial Art

750 Camino Lejo, Museum Hill, 505-982-2226

GenNext: Future So Bright, group show of contemporary works inspired by traditional Colonial art; on view through Nov. 25 • *The Delgado Room*, based on the will and estate inventory of trader and merchant Don Manuel Delgado • *Beltrán-Kropp Collection of Peruvian Colonial Art*, works from the collection of Pedro Beltrán and Miriam Kropp Beltrán • *The Youth Gallery*, works from Youth Market Artists; spanishcolonial.org; open daily.

New Mexico History Museum/Palace of the Governors

113 Lincoln Ave., 505-476-5200

Atomic Histories, an exhibit highlighting New Mexico's nuclear history, including photographer Meridel Rubenstein's two multimedia installations from the traveling exhibit *Critical Mass* and her room-sized installation *Oppenheimer's Chair*; through May 2019 • *The Land That Enchants Me So: Picturing Popular Songs of New Mexico*, sheet music and covers from the 1840s to 1930; also, sound recordings and memorabilia; on view through February 2019 • Core exhibits: *Setting the Standard: The Fred Harvey Company and Its Legacy*, collection and photos from POG photo archives • *Telling New Mexico: Stories From Then and Now* • *Santa Fe Found: Fragments of Time*, archaeological and historical roots of Santa Fe • *Treasures of Devotion/Tesoros de Devoción*, bultos, retablos, and crucifijos dating from the late 1700s to 1900 • *Segesser Hide Paintings*, depictions of colonial life in the U.S.; nmhistorymuseum.org; docent-led tours held daily through mid-October; open daily.

New Mexico Museum of Art

107 W. Palace Ave., 505-476-5072

Frederick Hammersley: To Paint Without Thinking and Patrick Nagatani: Invented Realities; through Sept. 6 • *Horizons: People & Place in New Mexican Art*, works from the museum collection; through Nov. 25 • *Contact: Local to Global*, works by New Mexico artists Hammersley, Agnes Martin, Bruce Nauman, and Postcommodity collective • *Shifting Light: Photographic Perspectives*, 21st-century photographs by Ansel Adams, Thomas Barrow, and Laura Gilpin, among others. Open daily; nmartmuseum.org.

Ralph T. Coe Center for the Arts

1590-B Pacheco St., 505-983-6372

Core exhibits of worldwide indigenous art, with a concentration in Native artifacts of North America. Open on the first Friday of the month and by appointment; coeartscenter.org.

Santa Fe Botanical Garden

715 Camino Lejo, Museum Hill, 505-471-9103

Gardens Gone Wild, sculpture by Dan Ostermiller; on view through May 13, 2019. A living museum

on 14 acres: Ojos y Manos, Orchard Gardens, The Courtyard Gardens, and the Arroyo Trails; santafebotanicalgarden.org; open daily.

SITE Santa Fe

1606 Paseo de Peralta, 505-989-1199

Michael Rakowitz: Ongoing, contemporary multidisciplinary works that depict lost or stolen culturally significant Iraqi objects of antiquity; through Aug. 18 • *Future Shock*, international multimedia group show, through June 10. Open daily; sitesantafe.org.

Wheelwright Museum of the American Indian

704 Camino Lejo, Museum Hill, 505-982-4636

Memory Weaving: Works by Melanie Yazzie, monotypes, paintings, wood blocks, tools, and other materials • *Peshlakai Vision*, jewelry, vessels, and sculptural works by silversmith Norbert Peshlakai; on view through Oct. 7. Core exhibit: *Bridles and Bits: Treasures From the Southwest*, late 1800s harness-leather bridles with Navajo-made bits • *Center for the Study of Southwestern Jewelry*, a permanent exhibit devoted to Diné and Pueblo metalwork and lapidary traditions; wheelwright.org; open daily.

Albuquerque

Indian Pueblo Cultural Center

2401 12th St., N.W., 866-855-7902

Zuni Ceratops and Anomalous Illusions, paintings by Levon Lonnasson; through July 15 • *Long Ago...*, multimedia narratives, through July • *We Are of This Place: The Pueblo Story*, a historical overview and contemporary artworks; weekend Native dances; indianpueblo.org; open daily.

National Hispanic Cultural Center

1701 Fourth St., S.W., 505-246-2261

Because It's Time: Unraveling Race and Place in New Mexico, group show; through early 2019 • *La Ultima Exhibición*, group show of works influenced by Rudolfo Anaya's book *Bless Me, Ultima*; through Nov. 11 • *A Life of Service: The Mari-Luci Jaramillo Collection, 1915-2007*, archival ephemera documenting the career and family history of the first Latina United States ambassador; long-term. Closed Mondays; nhccnm.org.

UNM Art Museum

1 University of New Mexico, 505-277-4001

Patrick Nagatani: A Survey of Early Photographs, from the permanent collection; through July 28 • *Meridel Rubenstein, Eden Turned on Its Side*, photographic exhibit in three parts, *Photosynthesis, Volcano Cycle*, and *Eden in Iraq*; through June 16 • *Long Environmentalism in the Near North*. Closed Sundays and Mondays; unmartmuseum.org.

Taos

Harwood Museum of Art

238 Ledoux St., 575-758-9826

Paintings by Agnes Martin • *Death Shrine*, an installation by Ken Price; harwoodmuseum.org; closed Mondays and Tuesdays.

La Hacienda de los Martinez

708 Hacienda Way, 575-758-1000

Spring Colcha Fling: New Traditional & Contemporary Colcha Embroideries; through June 29. A Northern New Mexico-style Spanish colonial "great house" built in 1804 by Severino Martinez. Open daily; taohistoricmuseums.org.

Millicent Rogers Museum

1504 Millicent Rogers Rd., 575-758-2462

On a National Scale: Mary B. Rogers and the New American Indian Art; through April 22, 2019 • *Earthen Temples: The Life of Adobe Churches*, Taos News archival records about and photographs of restoration projects; through June 24. Open daily; millicentrogers.org.

Taos Art Museum at Fechin House

227 Paseo del Pueblo Norte, 575-758-2690

Housed in the studio and home that artist Nicolai Fechin built for his family between 1927 and 1933; taosartmuseum.org; closed Mondays.



Joan Watts: **bodhi 9** 2017, oil on board

Charlotte Jackson Fine Art, 554 S. Guadalupe St., 505-989-8688
The exhibition *bodhi* draws a parallel between the practice of meditation, in which the practitioner seeks to minimize distractions and arrive at an experience of essential states, and a reductive painting practice. Artist Joan Watts sought new ways to engage in the studio after a physical ailment left her unable to continue working in her usual methods. The new works on exhibit are subtle explorations of color, the results of a concentrated working method inspired by the Japanese calligraphy practice of making marks with a single movement. The reception for *bodhi* is Friday, June 1, at 5 p.m. Copies of her new book on the series, published by Radius Books, are available.

Wes Hunting: **Medium Colorfield Vessel I** 2018, blown glass

OTA Contemporary, 203 Canyon Road, 505-930-7800
Wes Hunting's expressionistic works in blown glass are featured in the exhibit *Presentations*, which opens on Friday, June 1, with a reception at 5:30 p.m. Hunting's glass works from his *Colorfield* series are vibrant vessel forms with abstract designs that suggest microscopic, as well as cosmic, worlds of texture, color, and light. Originally intent on studying painting at Kent State University, his passion for glassblowing was awakened when, while working as a groundskeeper at Hale Farm, he was asked to take over for the glass shop manager, whose assistant had walked off the job. The show is on view through June.



Romain Etienne: **XYZT installation** 2017, photograph

ARTECHOUSE, 1904 Bellamah Ave. NW, Albuquerque, abq@artechouse.com
What began in 2017 as an immersive installation of new media in Washington, D.C.'s ARTECHOUSE now comes to Albuquerque's emerging Sawmill District. ARTECHOUSE presents *XYZT: Abstract Landscapes*, a light and projection-based interactive exhibit designed by Adrien M. and Claire B. Company, a design company that creates performances and exhibits that combine virtual and physical reality, art, and technology. The four letters are derived from the intersection of the x- and y-axes, with z standing for depth and t standing for time and relating to the idea of the fourth dimension. The exhibit comprises 10 dynamic installations on temporary display now through October. Albuquerque is the only stop on the exhibit's U.S. tour. Admission is \$15 with discounts available. The show is for ages six and up.

EXHIBITIONISM



A PEEK AT WHAT'S SHOWING AROUND TOWN

by Michael Abatemarco



Willis F. Lee: **Sunflower** 1996, pigment print

Webster Collection, 54 1/2 Lincoln Ave., 505-780-9500
The exhibition *Flora*, a group show of botanic-themed works by regional photographers and artists, continues through June 25. *Flora* includes works by Tasha Ostrander, Willis F. Lee, Robert Stivers, David Michael Kennedy, and others. In addition, the gallery showcases two ongoing exhibitions: *Timeless Integrity: The New World Collection*, an exhibit of indigenous art of the Americas, and *Through the Lens*, a show of contemporary and historic photography featuring works by Edward S. Curtis, Alfred P. Maudslay, and Steve Fitch, as well as iconic images of Frida Kahlo and Diego Rivera by notable photographers.



Joshua Michael Schrei: **Mother of the Universe** 2017, aluminum print

JFD Gallery, 1221 Flagman Way, Suite A2, 505-955-1911
The exhibition *Residue* opens at JFD Gallery on Friday, June 1, with a 5 p.m. reception. The images by Santa Fe-based teacher and photographer Joshua Michael Schrei capture aspects of the rare goddess traditions of the Indian subcontinent, many of which predate Hinduism. Schrei's recent travels in India took him to 41 sacred temples, including the revered Kamakhya Devi temple, where he documented shrines and rituals. The show focuses on the devotional offerings left at such sacred sites. *Residue* is the first in a series of exhibits documenting goddess traditions.