

PASA WEEK

ARTS AND ENTERTAINMENT CALENDAR
March 3-9, 2023

CALENDAR LISTING GUIDELINES

- Submit Pasa Week calendar events via email to pambeach@sfnewmexican.com at least two weeks prior to the event date.
- Provide the following: event title, date, time, venue, brief description, ticket prices, contact phone number, and web address.
- Inclusion of free listings is dependent on space availability.

CALENDAR COMPILED BY
PAMELA BEACH

FRIDAY 3/3

Gallery and Museum Openings

Andrea Fisher Fine Pottery

100 W. San Francisco St., 505-986-1234

Jemez Chocolate Clay, sgraffito pottery by Wilma Baca Tosa; artist demonstrations noon-4 p.m.

El Zaguán

545 Canyon Rd., 505-983-2567

Paper Garden, collage by Lisbeth Cort; through April 14; reception 5-7 p.m.

Gaia Contemporary

225 Canyon Rd., Suite 6, 505-577-8339

Winter Abstractions, group show; through March; reception 5-7 p.m.

Hecho Gallery

129 W. Palace Ave., 505-455-6882

Ledger art by Terran Last Gun, through April 2.

Peyton Wright Gallery

237 E. Palace Ave., 505-989-9888

The World Is My Oyster, paintings by Ati Maier; through April 3; reception 5-7 p.m.

Santa Fe Public Library Southside Branch

6599 Jaguar Dr., 505-955-2820

La Vie des Arbres, paintings by Jean Marc Richel; through March; reception 4-6 p.m.

Sorrel Sky Gallery

125 W. Palace Ave., 505-501-6555

Wild Things, work by sculptor Lisa Gordon; through March; reception 5-7 p.m.

Strata Gallery

418 Cerrillos Rd., Design Center, Suite 1C, 505-780-5403

Between Worlds, paintings by Carlos Canul; through March 18; reception 5-7 p.m.

Classical Music

New Mexico Bach Society

Immaculate Heart of Mary Retreat Center Chapel, 50 Mount Carmel Rd.

J.S. Bach's Cantata BWV 8 and the premiere of Aaron Alter's *Earth Cantata*; 7 p.m.; \$20-\$60; 505-474-4513, nmpas.org. (See story, Page 7)

In Concert

Hillary Smith

SITE Santa Fe, 1606 Paseo de Peralta, 505-989-1199

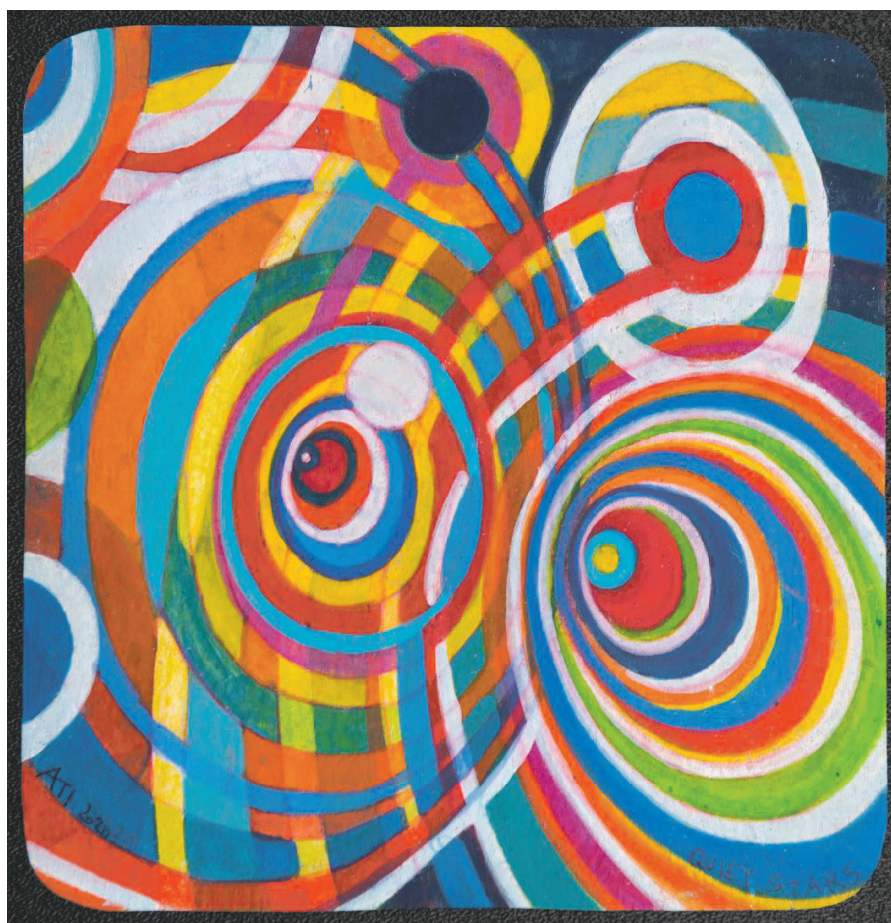
Tribute to Burt Bacharach, with Robert Fox, Alex Murzyn, Terry Burns, and John Trentacosta; 7 p.m.; \$25 and \$30 at the door or online at santafemusiccollective.org.

Theater/Dance

The Baby Monitor

Santa Fe Playhouse, 142 E. De Vargas St., 505-988-4262

Santa Fe playwright David Stallings' family drama; 7:30 p.m. preview performance (pay what you wish, beginning at \$3); santafeplayhouse.org.



Peyton Wright Gallery (peytonwright.com) shows paintings by Ati Maier through April 3.

Demetri Martin

Lensic Performing Arts Center, 211 W. San Francisco St., 505-988-1234

The Joke Machine Tour; 7:30 p.m.; \$35-\$149; lensic.org/events. (See story, Page 14)

I Love You, You're Perfect, Now Change

New Mexico Actors Lab Theater, 1213 Parkway Dr., 505-395-6576

Tri-M (Millennial Music Makers) Productions presents the musical comedy by Joe DiPietro and Jimmy Roberts; 7 p.m. Fridays and Saturdays, 2 p.m. Saturdays and Sundays, through March 12; \$30 and \$40, students \$15; trimsantafe.org.

Something Rotten!

Santa Fe Preparatory School, 1101 Camino de Cruz Blanca, 505-920-1561

Karey Kirkpatrick and John O'Farrell's 2015 Broadway musical; 7 p.m. today and Saturday, 2 p.m. Sunday; \$10 at the door, no charge for students.

Books/Talks

Jacqueline Osherow & Lauren Camp

Collected Works Bookstore, 202 Galisteo St., 505-988-4226

The poets read from their collections *Divine Ratios*, *Took House* & *An Eye in Each Square*; 6 p.m.

Events

Disarm Guitar

SITE Santa Fe, 1606 Paseo de Peralta, 505-989-1199

Performance by Daniel McCoy Jr. on artist Pedro Reyes' guitar made from decommissioned firearms, tour of the exhibit *Direct Action* follows; 5:30 p.m.; no charge.

First Fridays at Coe Center for the Arts

1590-B Pacheco St., 505-983-6372

Beth Thompson of New Mexico Wildlife Center introduces Sage the bull snake and Patches the box turtle; 1-2 p.m.; donations accepted; Open 1-4 p.m.; coeartscenter.org. Masks required.

Nightlife

Chat Noir Cabaret

Los Magueyes, 31 Burro Alley, 505-992-0304

Pianist-vocalist Charles Tichenor; 6 p.m.; no cover.

Freddie Swartz

Caffe Greco, 223 Canyon Rd., 505-820-7996

Guitarist-vocalist; 5-8 p.m.; no cover.

Russell Scanlan Trio

Club Legato, 125 E. Palace Ave., 505-988-9232

Jazz guitarist; 6-9 p.m.; no cover.

SATURDAY 3/4

Gallery and Museum Openings

Pie Projects

924-B Shoofly St., 505-372-7681

Nostalgia+, mixed media by Dana Newman and Dana Hart-Stone; through March 25; reception 4-6 p.m.

Prism Arts & Other Fine Things

1300 Luisa St., Suite 3A, 248-763-9642

Jessica Laurel Reese: *Steel-Rod Sculptures*; through April 1; reception 4-7 p.m.

Title Gallery

423 W. San Francisco St., hellotitlegallery@gmail.com

Fear of Flying, paintings by Hudson Heil; through May 1; reception 6-8 p.m.

Classical Music

Música Antigua de Albuquerque

St. Bede's Episcopal Church, 550 W. San Mateo Rd.

The Pilgrim's Path, music of medieval Spain; 4:30 p.m.; \$10-\$20; 505-842-9613, musicaantigua@comcast.com, musica-antigua.org.

¡Voces Unidas!

St. Francis Auditorium, New Mexico Museum of Art, 107 W. Palace Ave.

Free performance of arias, choruses, and music of Zarzuela by members of Young Voices of the Santa Fe Opera and Florida International University School of Music students; 2 p.m.; santafeopera.org/whats-on/young-voices.

Theater/Dance

The Baby Monitor opening night

Santa Fe Playhouse, 142 E. De Vargas St., 505-988-4262

Santa Fe playwright David Stallings' family drama; 7:30 p.m.; \$20-\$75, discounts available; Thursdays-Saturdays through April 1; santafeplayhouse.org.

Books/Talks

Enchanted Land

Cafe Pasqual's Gallery, 103 E. Water St., 505-983-9340

Chris Olson discusses his wood carvings on exhibit (on view through Sunday); 1 p.m.; mask-wearing requested.



Tri-M Productions presents *I Love You, You're Perfect, Now Change* through March 12 at New Mexico Actors Lab Theater. Above, Jensen Klodnicki and Gigi Guajardo.

Events

Discovering the Music of Paintings

Strata Gallery, 418 Cerrillos Rd., 505-780-5403
Oliver Prezant and musicians Carla Kountoupes, Jerry Weimer, and Katie Harlow in an interactive performance informed by Carlos Canul's paintings in the exhibit *Between Worlds*; 2-3:30 p.m.; \$25; 505-886-1251, holdmyticket.com/event/409271.

Santa Fe Artists Market opening day

Near the Railyard Water Tower, S. Guadalupe St.
Fine arts & crafts; 9 a.m.-2 p.m. Saturdays; 505-310-8766, santafeartistsmarket.com.

Santa Fe Tango Milonga Cañoncito

729 Canyon Rd.
Dance to DJ Michelle McRuiz; 6:30-9:30 p.m.; \$10 and \$15; santafetango.org.

SUNDAY 3/5

Theater/Dance

I Love You, You're Perfect, Now Change

New Mexico Actors Lab Theater, 1213 Parkway Dr.
Tri-M (Millennial Music Makers) Productions presents the musical comedy by Joe DiPietro and Jimmy Roberts; 7 p.m. Fridays and Saturdays, 2 p.m. Saturdays and Sundays, through March 12; \$30 and \$40, students \$15; trimsantafe.org.

Books/Talks

Civilian Conservation Corps in New Mexico 1933-1942

Santa Fe Woman's Club, 1616 Old Pecos Trail
New Deal historian Richard Melzer describes the corps' accomplishments; 4 p.m.; no charge.

Post-Pandemic/Pre-Apocalyptic Poetry

Teatro Paraguas, 3205 Calle Marie, 505-424-1601
John Knoll: including *Wrestling the Wheel*, *Hummingbird Graffiti*, and *Opera of Virus*; Joan Logghe reads from new works; 2 p.m.; no charge.

Nightlife

Doug Montgomery

Rio Chama, 414 Old Santa Fe Trail, 505-955-0765
Great American Songbook; 6-9 p.m. Sundays and Mondays; no cover.

High City Jazz Quartet

Chile Line Brewery, 204 N. Guadalupe St., 505-982-8474
Plus, open jams; 5-7 p.m. Sundays; no cover.

Idylline

CHOMP, 505 Cerrillos Rd., 505-772-0946
Local emo-rock band's *Beneath the Surface* EP-release show; Dry Ice opens; 8 p.m.; \$10 cover.

MONDAY 3/6

Gallery and Museum Openings

Java Joe's

2801 Rodeo Rd., 505-474-5282
NM Landscapes, ink series by Mari Mathieu; through April 2.

Books/Talks

Yideeskqggóó Naat'áanii – Leaders Now and Into the Future

1501 Paseo de Peralta, 855-825-9876
Panel discussion with Shawna Becenti (head of Navajo Prep), Kevin Belin (director of Diné Bazaad Institute), and Navajo Prep students; 6 p.m.; \$20; 505-466-2775, southwestseminars.org.

TUESDAY 3/7

In Concert

Late Night with Leonard Bernstein

Lensic Performing Arts Center, 211 W. San Francisco St.
Multimedia presentation with soprano Amy Burton and pianists Michael Boriskin and John Musto; 7:30 p.m.; \$35-\$115; 505-984-8759, performancesantafe.org. (See story, Page 16)

Books/Talks

E. Lockhart

Santa Fe Preparatory School, 1101 Camino de Cruz Blanca
The *We Were Liars* author reads from and signs copies of her novel; 6 p.m.; 505-780-8051, beehivekidsbooks.com.

WEDNESDAY 3/8

In Concert

Homage to Chavela Vargas

San Miguel Chapel, 401 Old Santa Fe Trail
Carla Kountoupes, Roberto Gonzales, Rafael Herrera, and Mario Reynolds join Nacha Mendez in a tribute to the Latin singer; 6-7 p.m.; \$20 at the door. Proceeds benefit the Nacha Mendez Music Scholarship.

Books/Talks

Robb Young Hirsch

Collected Works Bookstore, 202 Galisteo St., 505-988-4226
The local author and founder of the Climate Change Leadership Institute discusses *Walking Four Directions: A Journey for Regeneration in the Land of Enchantment*; 6 p.m.

Nightlife

Instrumental jazz jam

Club Legato, 125 E. Palace Ave., 505-988-9232
Robert Fox Trio hosts; 6-9 p.m.; no cover.

THURSDAY 3/9

In Concert

Take Me to the River: NOLA Live!

Lensic Performing Arts Center, 211 W. San Francisco St., 505-988-1234
Celebrating the music of New Orleans, with Dumpstaphunk, George Porter Jr., and Jon Cleary; 7:30 p.m.; \$45-\$69; lensic.org/events.

Theater/Dance

The Baby Monitor

Santa Fe Playhouse, 142 E. De Vargas St., 505-988-4262
Santa Fe playwright David Stallings' family drama; 7:30 p.m. Thursdays-Saturdays, through April 1; \$20-\$75, discounts available; santafeplayhouse.org.

Books/Talks

Spontaneous Inspiration Finding the Flow

Aurelia Gallery, 414 Canyon Rd., 505-501-2915
Painter Michael Deen discusses his works on exhibit; 5-6:30 p.m.

Nightlife

Alex Murzyn Quartet

Club Legato, 125 E. Palace Ave., 505-988-9232
Jazz saxophonist, with John Trentacosta, Cyrus Campbell, and Robert Fox; 6-9 p.m.; no cover.

David Geist

The Cabaret Upstairs at Osteria D'Assisi, 58 S. Federal Pl., 505-986-5858
Pianist/vocalist; 7-10 p.m.; \$5 cover; phone reservations only.

Lizzete de la Paz

Caffe Greco, 223 Canyon Rd., 505-820-7996
Guitarist-vocalist; 5-8 p.m.; no cover.

OUT OF TOWN

Albuquerque

34th National Fiery Foods & BBQ Show

Sandia Resort & Casino, 30 Rainbow Rd.
Annual trade fair, with tastings and sales of salsas, marinades, and rubs; 4-8 p.m. Friday, March 3, 11 a.m.-7 p.m. Saturday, March 4, and 10 a.m.-6 p.m. Sunday, March 5; \$10.50 daily; fieryfoodsshow.com.

Encountering the Spirit

Cathedral of St. John, 318 Silver Ave. S.W.
Friends of Cathedral Music perform Raven Chacon's *Voiceless Mass*; 10:30 a.m. Saturday, March 4; \$20 in advance, \$25 at the door; fcmabq.org/tickets. (See story, Page 24)

Eric Johnson

National Hispanic Cultural Center, 1701 Fourth St. SW, 505-246-2261
The singer-songwriter on his 2023 Treasure Tour, in support of his latest albums *The Book of Making* and *Yesterday Meets Today*; 7:30 p.m. Saturday, March 4; \$24-\$40; ampconcerts.org.

Taos

Taos Chamber Music Group

Harwood Museum of Art, 238 Ledoux St., 575-758-9826
A Love Affair, music informed by the art of Georgia O'Keeffe, Maya Angelou's poetry, and Robert and Clara Schumann's love letters; including violist David Yang, flutist Nancy Laupheimer, and pianist Debra Ayers; 5:30 p.m. Sunday, March 5; \$12-\$30; taoschambermusicgroup.org.

PEOPLE WHO NEED PEOPLE

Artists/Photographers

Foto Forum Santa Fe Photography Award

Competition, open to emerging and established photographers; solo exhibit; \$2,500 in cash and prizes; up to 12 entries accepted through Sunday, March 5; fotoforumsantafe.com/award.

Hecho a Mano

Hand-pulled prints sought for the April 29 *MiniPrint!* exhibit; hechoamano.org. Email works to miniprint@hechoamano.shop by March 15.

Northern New Mexico Fine Arts and Crafts Guild

Applications accepted for the summer shows at Cathedral Park, held in May, July, and September; March 15 deadline; artsandcraftsguild.org. ◀

AT THE GALLERIES

Santa Fe

5. Gallery

2351 Fox Rd., Suite 700, 505-257-8417

Drawings by Wes Mills; through March 18.

Aurelia Gallery

414 Canyon Rd., 505-501-2915

Freed from Rage and Sorrow, photographs by Attasalina; *Spontaneous Inspiration Finding the Flow*, work by painter Michael Deen; through March 26.

Axle Contemporary

Look for the mobile gallery outside the Santa Fe Farmers' Market Pavilion, 505-670-5854/505-670-7612

InSide Out: The Menagerie Escapes, broadsides by painter Shakti Kroopkin. Visit axleart.com for van locations through March 26.

Blue Rain Gallery

544 S. Guadalupe St., 505-954-9902

Starr Hardridge: *Renewal*, beadwork; Preston Singletary and Jody Naranjo: *A Collaboration in Glass IV*; through March 11.

CONTAINER

1226 Flagman Way, 505-995-0012

Beverly McIver: *Dear God, Loving in Black and White* and Renee, portraiture; through March 10. *Seven Contemplations*, sculpture by the installation artist Swoon; through March 15.

Evoke Contemporary

550 S. Guadalupe St., 505-995-9902

Proof of Life, Part 3, paintings by Francis Di Fronzo; through March 25.

Foto Forum Santa Fe

1714 Paseo de Peralta, 505-470-2582

2023 Annual Members Show; through March 27.

Kouri + Corrao Gallery

3213 Calle Marie, 505-820-1888

Dots in the Universe, textile art by Karen Hampton; through March 25.

Nüart Gallery

670 Canyon Rd., 505-988-3888

Timeless, mixed media by Randall Reid; through March 12.

Vital Spaces Annex Gallery

Midtown Campus, 1600 St. Michael's Dr., vitalspaces.org
Amalgamation: Behind the Studio Door, group show of contemporary works; through March 12.

MUSEUMS & ART SPACES

Santa Fe

Coe Center for the Arts

1590-B Pacheco St., 505-983-6372

African, Asian, European, Native American, and Oceanic objects; email info@coeartscenter.org for tours; coeartscenter.org. Open by appointment.

Georgia O'Keeffe Museum

217 Johnson St., 505-946-1000

Radical Abstraction, paintings from the collection; through Oct. 30 (see story, Page 22) • *Georgia O'Keeffe: Making a Life*, art and objects from the collection; through March 27, 2024 (see story, Page 20); okeeffemuseum.org. Open Thursdays-Mondays.

IAIA Museum of Contemporary Native Arts

108 Cathedral Pl., 888-922-4242

Inherent Memory, group show of basketry-related art by California and Great Basin-based women and nonbinary artists; through June 25 • *Rick Rivet: Journeys, Mounds and the Metaphysical*, 30-year retrospective of work by the Sahtu-Métis painter; through July 2 • *The Stories We Carry*, jewelry from the museum collection; through Sept. 30, 2024; iaia.edu/mocna. Closed Tuesdays.

Meow Wolf

1352 Rufina Circle, 505-395-6369

The House of Eternal Return, interactive installation. The Adulti-Verse at Meow Wolf, admission discounts for ages 21+ first Thursdays of the month; meowwolf.com. Closed Tuesdays and Wednesdays.

Museum of Indian Arts and Culture

710 Camino Lejo, Museum Hill, 505-476-1269

Painted Reflections: Isomeric Design in Ancestral Pueblo Pottery, historical and contemporary designs; through March 12 • *ReVOLUTION*, work by Virgil Ortiz; through April 1 • *Grounded in Clay: The Spirit of Pueblo Pottery*, traveling exhibit of historical and contemporary works from the School for Advanced Research Indian Arts Research Center collection; through May 29 • *Here, Now and Always*, artifacts from the collection; long term; indianartsandculture.org. Open daily.

Museum of International Folk Art

706 Camino Lejo, Museum Hill, 505-476-1200

La Cartoneria Mexicana: The Mexican Art of Paper and Paste, historic sculptures from the collection, exhibited alongside the work of three visiting cartoneros; through June 2024. Core exhibits: *Multiple Visions: A Common Bond*, works in the Alexander Girard Wing • *Lloyd's Treasure Chest: Folk Art in Focus*, thematic displays from the permanent collection; moifa.org. Closed Mondays.

Museum of Spanish Colonial Art

750 Camino Lejo, museum@spanishcolonial.org

Mentorship: The Transferring of Cultural Knowledge, showcasing youths participating in the Traditional Spanish Market; through March 12 • *Trails, Rails, and Highways: How Trade Transformed the Art of Spanish New Mexico*, works from the collection; through August • *Youth Gallery*, Youth Market artists' works; spanishcolonial.org. Open Wednesdays-Fridays.

New Mexico History Museum

113 W. Palace Ave., 505-476-5200

Core exhibits: *Palace Seen and Unseen: A Convergence of History and Archaeology*, photographs

and artifacts • *The Massacre of Don Pedro Villasur*, graphic art by Turner Avery Mark-Jacobs • *The First World War*, ephemera relating to New Mexicans' contributions • *Setting the Standard: The Fred Harvey Company and Its Legacy*, objects from the collection and photographs from Palace of the Governors archives • *Telling New Mexico: Stories From Then and Now*, artifacts, photographs, films, and oral histories; nmhistorymuseum.org. Open daily.

New Mexico Museum of Art

107 W. Palace Ave., 505-476-5072

The Nature of Glass, group show, through December • *An American in Paris: Donald Bearegard*, paintings, through Oct. 22; nmartmuseum.org. Closed Mondays.

Poeh Cultural Center and Museum

78 Cities of Gold Rd., Pueblo of Pojoaque, 505-455-5041

Di Wae Powa: They Came Back, historical Tewa Pueblo pottery • *The Why*, group show of works by Native artists • *Nah Poeh Meng*, 1,600-square-foot core installation highlighting the works of Pueblo artists and Pueblo history. Open Mondays-Fridays.

Santa Fe Botanical Garden

715 Camino Lejo, Museum Hill, 505-471-9103

14-acre living museum; santafebotanicalgarden.org. Open Fridays-Sundays, through March.

SITE Santa Fe

1606 Paseo de Peralta, 505-989-1199

Young Curators: Breaking Chains, works by members of SITE's local school program; through Monday, March 6 • *Direct Action*, Pedro Reyes' immersive installation; through May 8; sitesantafe.org. Closed Tuesdays and Wednesdays.

Wheelwright Museum of the American Indian

704 Camino Lejo, Museum Hill, 505-982-4636

The Mary Morez Style: Transformations of Tradition, paintings and drawings by the Diné artist; through March 12 • *California Stars: Huivaniüs Pütsiv*, showcasing the first Californian artists whose works reflected personal experiences,

mythology, and social justice (including Rick Bartow, Jean LaMarr, Harry Fonseca, and Cara Romero); through Jan. 14, 2024. Long term: *Center for the Study of Southwestern Jewelry*, devoted to Diné and Pueblo traditions • *Portraits: Peoples, Places, and Perspectives*, paintings • *Rooted: Samples of Southwest Basketry*; works from the collection; wheelwright.org. Closed Sundays and Mondays.

Albuquerque

Albuquerque Museum

2000 Mountain Rd. NW, 505-243-7255

New Mexico Landscapes; through March 19 • *Those (Un)Familiar Faces*, works from the photo archives; through July 9 • *Indigenous Art, Culture, and Community* (from the collection of Ruth and Sydney Schultz); through July 23; cabq.gov/culturalservices/albuquerque-museum. Closed Mondays.

Holocaust and Intolerance Museum of New Mexico

616 Central Ave. SW, 505-247-0606

Overtuned: A Life Etched in Stone • *Hate in America*. Permanent exhibits, *With Evil Intent* • *African American Experience, Phase 2: Slavery 1866-1945* • *Czech Torah* • *Armenian Genocide* • *Hidden Treasures* • *Colonization: Racism and Resilience*; nmholocaustmuseum.org. Open Wednesdays-Saturdays.

Taos

Harwood Museum of Art

238 Ledoux St., 575-758-9826

Outriders: Legacy of the Black Cowboy; through May 7 • *Herbert "Buck" Dunton: A Mainer Goes West*; through May 21; harwoodmuseum.org. Open Wednesdays-Sundays.

Millicent Rogers Museum

1504 Millicent Rogers Rd., 575-758-2462

Tuah-Tah/Taos Pueblo: Home, highlighting the Pueblo's culture and artistic achievements • *Pop Chalee! Yippee Ki Yay!*, paintings; millicentrogers.org. Open daily.



Axle Contemporary (axleart.com) shows broadsides by Shakti Kroopkin through March 26.

IN THE WINGS

Music

Derek Gripper

San Miguel Chapel, 401 Old Santa Fe Trail
Cape Town-based classical guitarist; 7:30 p.m. March 10;
\$20 in advance, \$25 day of show, 505-886-1251, ampcconcerts.org.

Chatter Santa Fe

Center for Contemporary Arts, 1050 Old Pecos Trail
Pianist Emanuele Arciuli, violinist David Felberg, and percussionist Alan Zimmerman; Michael Oesterle's *Ayre*, Barbara Assiginaak's *Inscription Rock*, Aaron Jay Kernis' *Air*, and Lou Harrison's *Varied Trio*; 10:30 a.m. March 11; \$5-\$16; chatterabq.org/boxoffice.

Sangre de Christo Chorale

St. John's United Methodist Church, 1200 Old Santa Fe Trail
Folk songs by Aaron Copland and Cecilia McDowall; 4 p.m. March 11;
\$5-\$25; southwestarts.org.

Santa Fe All-Star Jazz Band

Dave's Jazz Bistro, Santa Fe School of Cooking, 125 N. Guadalupe St.,
505-983-4511
With a Song in My Heart, a tribute to Dave Curtis (jazz bistro's namesake), with pianist John Rangel, saxophonist Dave Anderson, trumpeter Jan McDonald, bassist Richard Snider, and percussionist David Post; 6:30-9:30 p.m. March 11; \$165; santafeschoolofcooking.com.

Santa Fe Pro Musica Orchestra

Lensic Performing Arts Center, 211 W. San Francisco St.,
505-988-1234
Music of Jennifer Higdon, Osvaldo Golijov, and Dvořák; led by Mei-Ann Chen; featuring double bassist Xavier Foley; 7 p.m. March 11, 3 p.m. March 12; \$28-\$98; 505-988-4640, sfpromusica.org.

Keller Williams

Meow Wolf, 1352 Rufina Circle, 505-395-6369
Singer-songwriter; doors 8 p.m. March 11; \$29.50 in advance, \$32 day of show; tickets.meowwolf.com.

The Beths

Meow Wolf, 1352 Rufina Circle, 505-395-6369
Auckland, New Zealand band; doors 8 p.m. March 13; \$25; tickets.meowwolf.com.

Tanya Tucker

Lensic Performing Arts Center, 211 W. San Francisco St., 505-988-1234
While I'm Livin' tour; 7:30 p.m. March 15; \$44-\$74; ampcconcerts.org.

Bobby Shew & Bob Sheppard Quintet

Outpost Performance Space, 210 Yale Blvd., SE, Albuquerque, 505-268-0044
Jazz trumpeter and woodwind player; 7:30 p.m. March 16;
\$25 and \$30; outpostspace.org.

True Heart Troubadours

St. Francis Auditorium, 107 W. Palace Ave.
Tim O'Brien, Jan Fabricius, Mary Gauthier, and Jaimee Harris;
7:30 p.m. March 16; \$27-\$38; ampcconcerts.org.

Schola Cantorum of Santa Fe

San Miguel Chapel, 401 Old Santa Fe Trail
The sacred-music ensemble performs Irish ballads, reels, and monastic chants; 6:30 p.m. March 17; \$25 and \$30; schola-sf.org.

David Doucet

Outpost Performance Space, 210 Yale Blvd., SE, Albuquerque, 505-268-0044
Folk/Cajun guitarist-singer; 7:30 p.m. March 17; Bébé La La opens, \$25 and \$30; outpostspace.org.

Lúnasa

Lensic Performing Arts Center, 211 W. San Francisco St., 505-988-1234
Traditional music of Ireland; 7:30 p.m. March 17; \$25-\$49; lensic.org/events.

The Met Live in HD

Lensic Performing Arts Center, 211 W. San Francisco St.,
505-988-1234
The Metropolitan Opera broadcast series continues with *Lohengrin*;
10 a.m. March 18, 6 p.m. March 20; \$22-\$28; tickets.lensic.org/events.

Bluebird Café Songwriters' Concert Series

Bishop's Lodge, 1297 Bishops Lodge Rd., 888-741-0480
Nashville singer-songwriters; Kent Blazy, Danny Myrick, and Leslie Satcher; 6 p.m. March 18; \$150; aubergeresorts.com/bishops lodge/experiences/in-the-round.

Naghash Ensemble

San Miguel Chapel, 401 Old Santa Fe Trail
Armenian group; 7:30 p.m. March 18; \$20; 505-886-1251, ampcconcerts.org.

Pablo Sáin-Villegas

Lensic Performing Arts Center, 211 W. San Francisco St., 505-988-1234
Spanish classical guitarist; music of Granados, Tárrega, and Albéniz;
7:30 p.m. March 18; 435-\$115; 505-984-8759, performancesantafe.org.

Concordia Santa Fe Wind Orchestra

St. Francis Auditorium, New Mexico Museum of Art, 107 W. Palace Ave.
Premiering Stephen Gryc's *Stone Colors* and music of William Bolcom, George Gershwin, and Shuying Li; 2 p.m. March 19;
donations accepted; concordiasantafe.org.

Pinback

Meow Wolf, 1352 Rufina Circle, 505-395-6369
Indie-pop duo Armistead Burwell Smith IV and Rob Crow;
doors 8 p.m. March 19; \$25; tickets.meowwolf.com.

Bill Frisell Quartet

St. Francis Auditorium, New Mexico Museum of Art, 107 W. Palace Ave.
Jazz guitarist, composer, and arranger; 7:30 p.m. March 20;
\$45 and \$79; southwestrootsmusic.org.

Jupiter Ensemble

Lensic Performing Arts Center, 211 W. San Francisco St., 505-988-1234
With mezzo-soprano Lea Desandre; performing from their 2019 debut album, *All-Vivaldi*; 7:30 p.m. March 21; \$35-\$115; 505-984-8759, performancesantafe.org.

Sacred music for Lent

San Miguel Chapel, 401 Old Santa Fe Trail
Haydn's *The Seven Last Words of Christ*, with violinists Ellen Chávez de Leitner and Laura Schneider, violist Sigrid Karlstrom, and cellist David Schepps; 3 p.m. March 24; \$25 at the door or call 505-920-9728.

Coro Santa Fe

St. John's United Methodist Church, 1200 Old Santa Fe Trail
Of Song & Dance, selections from the Great American Songbook and music of Piazzolla; 4 p.m. March 25; \$5-\$25; southwestarts.org.

New Mexico Performing Arts Society Chamber Concert III

Immaculate Heart of Mary Chapel, 50 Mount Carmel Rd.
Music of Ginastera, Mozart, and Piazzolla, including flutist Jennifer Lau, violist Joyce Huang, and cellist Sally Guenther; 7 p.m. March 25;
\$25-\$60; 505-474-4513, nmpas.org.

Santa Fe Symphony Orchestra

Lensic Performing Arts Center, 211 W. San Francisco St., 505-988-1234
Bartók Meets Beethoven, led by Guillermo Figueroa; 4 p.m. March 26;
\$22-\$80; 505-983-1414, boxoffice.santafesymphony.org/events.

Tejon Street Corner Thieves vs Them Coulee Boys

Tumbleroot Brewery & Distillery, 2791 Agua Fria St., 505-393-5135
Trashgrass-blues band and folk-rock band; 7:30 p.m. March 26;
\$18 in advance, \$22 day of show; 505-886-1251, ampcconcerts.org.

Weyes Blood: In Holy Flux Tour

Meow Wolf, 1352 Rufina Circle, 505-395-6369
Singer-songwriter Natalie Mering; doors 8 p.m. March 29; \$25; tickets.meowwolf.com.

Immanuel Wilkins Quartet

Outpost Performance Space, 210 Yale Blvd. SE, Albuquerque, 505-268-0044
Alto saxophonist, with Micah Thomas on piano, Daryl Johns on bass, and Kweku Sumbry on drums; 7:30 p.m. March 30; \$25 and \$30; outpostspace.org.

Santa Fe Pro Musica Baroque Ensemble

First Presbyterian Church, 208 Grant Ave.
Music of Telemann and Graupner; led by Stephen Redfield; with soloists baritone Michael Hix and flutist Kim Pineda; 7 p.m. April 1, 3 p.m. April 2; \$25-\$65; 505-988-4640, sfpromusica.org.

Rayland Baxter

Tumbleroot Brewery & Distillery, 2791 Agua Fria St., 505-393-5135
Nashville singer-songwriter; 7:30 p.m. April 5; \$25 in advance, \$30 day of; 505-886-1251, ampconcerts.org.

Raven Chacon, Tatsuya Nakatani, Carlos Santistevan Trio

Outpost Performance Space, 210 Yale Blvd. SE, Albuquerque, 505-268-0044
The New Mexico musicians/composers perform from their recently released LP, *Inhale/Exhale*; 7:30 p.m. April 6; 20 and \$25; outpostspace.org.

Aaron Goldberg Trio

Gig Performance Space, 1808 Second St., gigsantafe.com
Jazz pianist, with bassist Reuben Rogers and percussionist Eric Harland; 7:30 p.m. April 8; \$25; gigsantafe.ticket.ca.

Chris Botti

Lensic Performing Arts Center, 211 W. San Francisco St., 505-988-1234
Jazz trumpeter-composer; 7:30 p.m. April 10; \$60-\$95; lensic.org/events.

Laurie Lewis and the Right Hands

Tumbleroot Brewery & Distillery, 2791 Agua Fria St., 505-393-5135
Folk singer-songwriter; 7:30 p.m. April 12; \$25 in advance, \$30 day of; 505-886-1251, ampconcerts.org.

Academy of St. Martin in the Fields Wind Ensemble

Lensic Performing Arts Center, 211 W. San Francisco St., 505-988-1234
Tom Blomfield (oboe), James Burke (clarinet), Julie Price (bassoon), Stephen Stirling (horn), with guest Caroline Palmer (piano); music of Brahms, Mozart, and Poulenc; 7:30 p.m. April 13; \$45-\$95; 505-984-8759, performancesantafe.org.

The Manhattan Transfer

Lensic Performing Arts Center, 211 W. San Francisco St., 505-988-1234
Vocal quartet blending pop, jazz, R&B, & a cappella music; 7:30 p.m. April 14; \$45-\$69; lensic.org/events.

Jake Shulman-Ment

Gig Performance Space, 1808 Second St., gigsantafe.com
Brooklyn-based Klezmer violinist; 7:30 p.m. April 15; \$25; gigsantafe.ticket.ca.

Viano String Quartet

Simms Center for Performing Arts, 6400 Wyoming Blvd. NE
Music of Bartok (Quartet No. 3), Caroline Shaw (*The Evergreen*), and Grieg (Quartet No. 1 in G Minor); 3-5:30 p.m. April 16; \$30 and \$40; chambermusicabq.com.

Piano Battle

Lensic Performing Arts Center, 211 W. San Francisco St., 505-988-1234
Andreas Kern and Paul Cibis; music of Chopin, Liszt, and Debussy; 7:30 p.m. April 18; \$29-\$59; lensic.org/events.

Firey String Sistas

SITE Santa Fe, 1606 Paseo de Peralta, 505-989-1199
Jazz chamber ensemble infusing global funk, soul, and jazz; 7 p.m. April 21; \$30 and \$35; santafemusiccollective.org.

The Tallis Scholars

Cathedral Basilica of St. Francis of Assisi, 131 Cathedral Pl.
Vocal ensemble celebrating 50th anniversary; music of Tallis, Palestrina, and Lassus; 7:30 p.m. April 24; \$35-\$115; 505-984-8759, performancesantafe.org.

Watchhouse

Lensic Performing Arts Center, 211 W. San Francisco St., 505-988-1234
Americana/folk duo Andrew Marlin and Emily Frantz; 7:30 p.m. April 27; \$37-\$49; ampconcerts.org.

Les Violons du Roy & Inon Barnatan

Duane Smith Auditorium, Los Alamos High School campus, 1300 Diamond Dr.
Canadian 15-piece chamber orchestra, with the pianist; music of C.P.E. Bach and Shostakovich; 7 p.m. April 28; \$30; losalamosconcert.org.

Theater/Dance**SEVEN**

Teatro Paraguas, 3205 Calle Marie, 505-424-1601
Staged reading of the documentary play based on interviews with seven international, female activists by seven American playwrights; March 10-19; \$25; proceeds benefit Esperanza Shelter; teatroparaguasnm.org. Call for reservations.

Fearless Female Voices

Fashion Outlets of Santa Fe, 8380 Cerrillos Rd., Unit 420
Blue Raven Theatre presents fully staged readings of short dramas; 1-4 p.m. March 11, directed by Talia Pura; donations accepted.



Meow Wolf presents Keller Williams March 11.

Cinderella

Lensic Performing Arts Center, 211 W. San Francisco St., 505-988-1234
Part of the World Ballet Series; 7 p.m. March 16; \$61-\$101; lensic.org/events.

EntreFlamenco Spring Season

El Flamenco de Santa Fe, 135 W. Palace Ave., 505-209-1302
Featuring Antonio Granjero and Estefania Ramirez; 6:15 p.m. March 17-June 24; \$25-\$43; entreflamenco.com/tickets.

Paula Poundstone

Lensic Performing Arts Center, 211 W. San Francisco St., 505-988-1234
Stand-up comedian on tour; 7:30 p.m. March 24; \$39-\$46; lensic.org/events.

Comedia en Español con Antonio Sanint

Teatro Paraguas, 3205 Calle Marie, 505-424-1601
Colombian comedian and actor, with Oscar Collozas; 7 and 9 p.m. sets March 25; \$25; sanintcomedy.brownpapertickets.com and at the door. Call for reservations.

National Theatre Live in HD

Lensic Performing Arts Center, 211 W. San Francisco St., 505-988-1234
The Crucible, with Erin Doherty (*The Crown*) and Brendan Cowell (*Yerma*); 7 p.m. March 28; \$22; lensic.org/events.

Ragamala Dance Company

Lensic Performing Arts Center, 211 W. San Francisco St., 505-988-1234
South Indian dance troupe in *Sacred Earth*; 4 p.m. April 2; \$35-\$115; 505-984-8759, performancesantafe.org.

Paul Taylor Dance Company

Lensic Performing Arts Center, 211 W. San Francisco St., 505-988-1234
Modern choreography; 7:30 p.m. April 5; \$45-\$75; lensic.org/events.

Miranda Sings

Lensic Performing Arts Center, 211 W. San Francisco St., 505-988-1234
Comedian-actress Colleen Ballinger's one-woman show; 7:30 p.m. April 22; \$35-\$90; lensic.org/events.

Events, Etc.**Banff Mountain Film Festival**

Lensic Performing Arts Center, 211 W. San Francisco St., 505-988-1234
Mountain-sports and environmentally themed films; 7 p.m. March 13 and 14; \$20 one night, \$38 for both; lensic.org/events.

Turquoise Museum trip

Meet at the Wheelwright Museum of the American Indian, Friends of the Wheelwright's self-guided tour of the Albuquerque-based, privately owned museum, with *Turquoise in America* author Mike Ryan commentating; \$20 and \$30. Meet at the Wheelwright at 8:45 a.m. March 14 and carpool to Albuquerque; wheelwright.org/events.

ArtSpring 2023 Gala

James A. Little Theater, New Mexico School for the Deaf, 1060 Cerrillos Rd. New Mexico School for the Arts' student showcase of visual arts, dance, music, and spoken-word performances; friends & family show 3-4 p.m. March 16, free admission, ticketed performance 6:30 p.m. March 16, \$15; gala 5 p.m. March 17, \$200; nmschoolforthearts.org.

2023 Native Arts Speaker Series

Museum of Indian Arts & Culture, 710 Camino Lejo, 505-476-1269
School for Advanced Research presents *Grounded in Clay Conversations*, Pueblo pottery-related topics held in conjunction with the MIAC exhibition; 1 p.m. March 17 and 31, April 14 and 21; free with museum admission. Reservations at sarsf.info/convos.

With the Grain

New Mexico Museum of Art, 107 W. Palace Ave., 505-476-5072
An exhibition tracing the relationship between Hispanic, Northern New Mexico wood carvers and their use of incorporating the natural form of wood in their carvings; opening March 18; through Sept. 4.

Czech It Out!

Santa Fe Woman's Club, 1616 Old Pecos Trail
Arts writer Mark Tiarks traces early influences in the development of Czech opera; 6 p.m. March 22; \$10 and \$15; santafeoperaguild.org/guild-events.

Southwest Chocolate & Coffee Fest

Manuel Lujan Jr. Exhibit Complex, Expo New Mexico, 300 San Pedro Blvd. NE, 505-222-9700, Albuquerque
More than 150 chocolatiers, coffee roasters, candy makers, bakers, breweries, and wineries; 10 a.m.-6 p.m. April 1; \$5-\$20; holdmyticket.com/tickets/405592.

New Mexico Governor's Mansion tours

1 Mansion Dr., newmexicogovernorsmansion.org/tours
Free docent-led walk-throughs noon to 2 p.m., by appointment, the second and fourth Wednesdays monthly beginning April 12; Contact Mary Brophy, 505-476-2800, mary.brophy@gsd.nm.gov. Private group tours available through the year.

Manuel Carrillo: Mexican Modernist

New Mexico Museum of Art, 107 W. Palace Ave., 505-476-5072
Photographic exhibition; opening April 15; through Feb. 4, 2024.