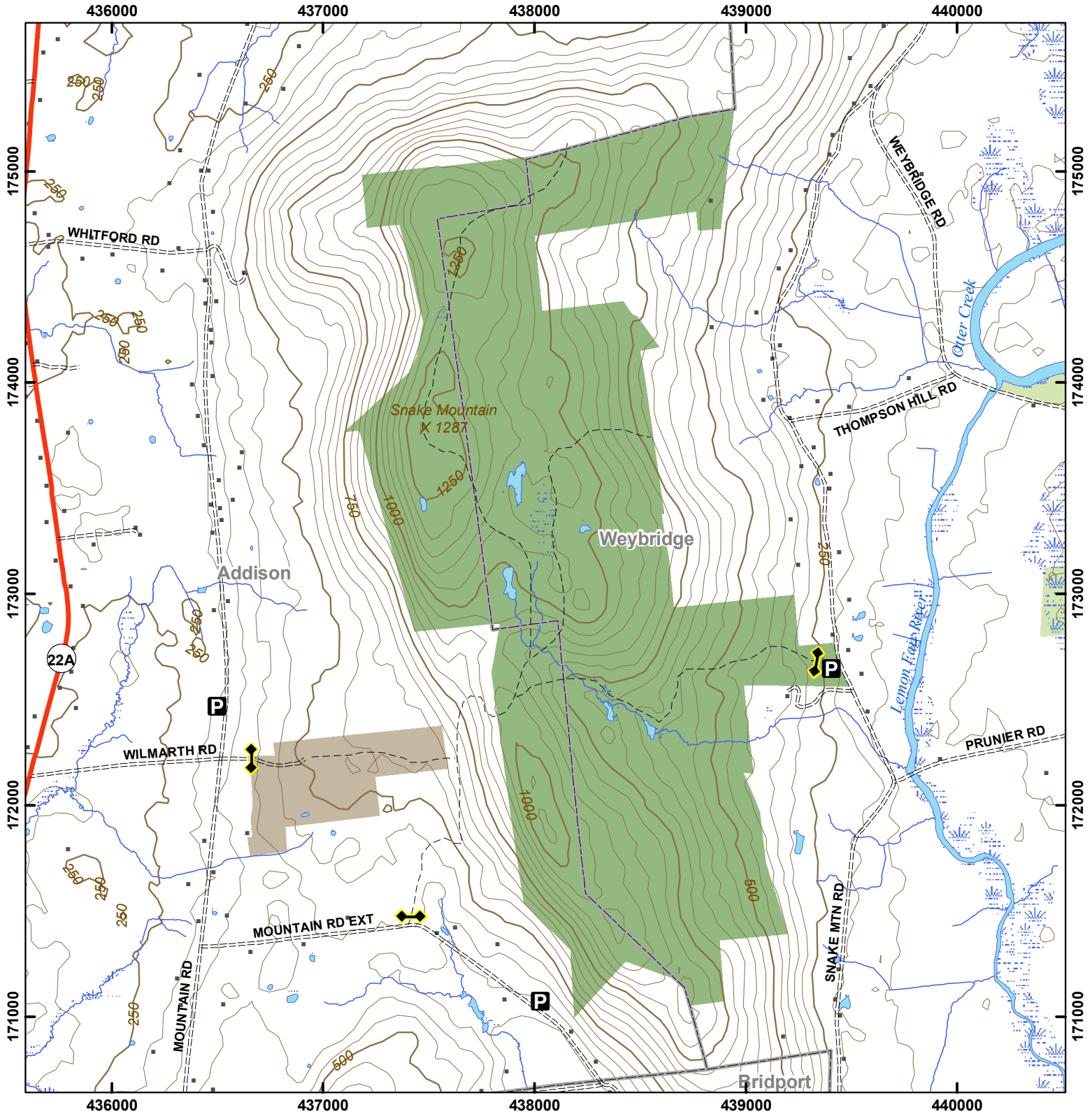


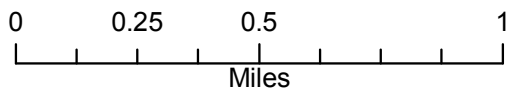


Vermont Fish & Wildlife Department

Snake Mountain Wildlife Management Area



Snake Mountain WMA: 1,215 acres



- Wildlife Management Area
- Other Public Land
- Private w/ Public Access
- Wildlife Viewing Areas
- Car-top Access
- Parking
- Boat Ramp
- Gate
- Designated Camp Site During Big Game Seasons Only

This map is for illustrative purposes only. The accuracy of the data layers shown on this map are limited by the accuracy of the source materials. No warranty as to the accuracy or the usefulness of the data is expressed or implied.