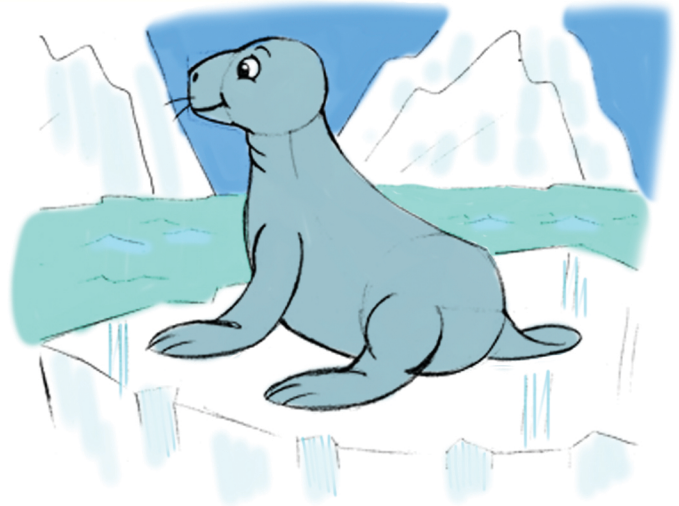
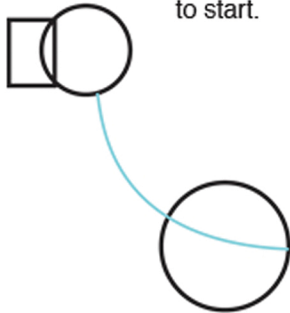


# Step-by-step drawing of a seal!

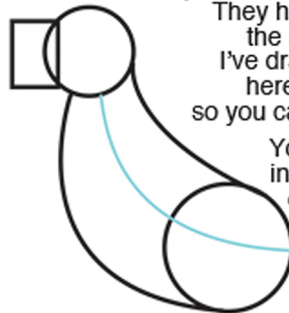
A Drawing lesson from the  
**Drawing with Mark** episode:



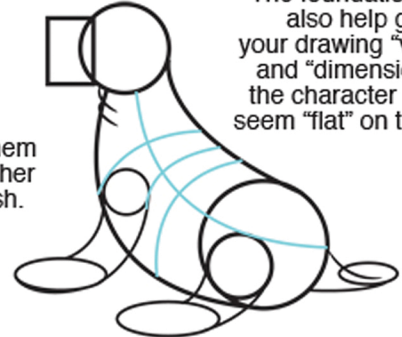
1. Use your basic shapes to start.



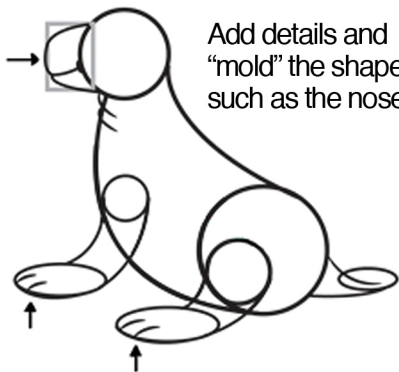
2. The blue lines are your "foundation lines". They help line up the shapes. I've drawn them here in blue so you can see them.



3. The foundation lines also help give your drawing "volume" and "dimension" so the character doesn't seem "flat" on the page.



4. Add details and "mold" the shapes such as the nose.



5. Our foundation lines are erased to give us a nice clean drawing...



6. ...but they are still there invisibly, giving our drawing a nice solid foundation!



Try again! Keep practicing and having fun!



**drawing with mark**

How-to-draw DVDs  
now available!

Fun and educational  
drawing instruction on dvds  
for ages 6 - 86.

Over 2 hours of  
educational fun per set!

Please visit:

[www.moviezyng.com/DWM.aspx](http://www.moviezyng.com/DWM.aspx)