

# The Magical Attic

www.TheMagicalAttic.com

HI! I'M SUNRAY BEAR!  
MY BUDDY, ECLIPSE DOGGY  
WILL NOW DEMONSTRATE  
THE PROPER WAY TO WEAR  
A MASK!



UM... ECLIPSE,  
YOUR NOSE IS NOT  
COVERED...



THAT WOULD  
BE A PROBLEM.



NOT QUITE.



I LOVE THESE  
NEW BANDANAS.



HERE'S THE  
RIGHT WAY!



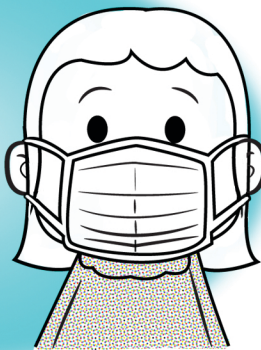
## IF THE MASK HAS:

**EAR LOOPS:** HOLD THE MASK BY BOTH EAR LOOPS AND PLACE ONE LOOP OVER EACH EAR.

**TIES:** HOLD THE MASK BY THE UPPER STRINGS. TIE THE UPPER STRINGS NEAR THE TOP OF YOUR HEAD. TIE THE BOTTOM STRINGS ON THE BACK OF YOUR NECK.

**DUAL ELASTIC BANDS:** PULL THE BOTTOM BAND OVER YOUR HEAD AND POSITION IT AGAINST THE BACK OF YOUR NECK. PULL THE TOP BAND OVER YOUR HEAD AND POSITION IT NEAR THE TOP OF YOUR HEAD.

MOLD THE BENDABLE METALLIC UPPER STRIP TO THE SHAPE OF YOUR NOSE BY PINCHING AND PRESSING DOWN ON IT WITH YOUR FINGERS. PULL THE BOTTOM OF THE MASK OVER YOUR MOUTH AND CHIN. BE SURE THE MASK FITS SNUGLY. DON'T TOUCH THE MASK ONCE IN POSITION. IF THE MASK GETS SOILED OR DAMP, REPLACE IT WITH A NEW ONE.



## DO NOT:

TOUCH THE MASK ONCE IT'S SECURED ON YOUR FACE, AS IT MIGHT HAVE MEAN GERMS ON IT.

- DANGLE THE MASK FROM ONE EAR.
- HANG THE MASK AROUND YOUR NECK.
- CRISSCROSS THE TIES.
- REUSE SINGLE-USE MASKS.

HOW'S THIS?



Before putting the mask on and after taking it off, wash your hands for at least 20 seconds with soap and water, or rub your hands together with alcohol-based hand sanitizer.