

 **ARCADIA**

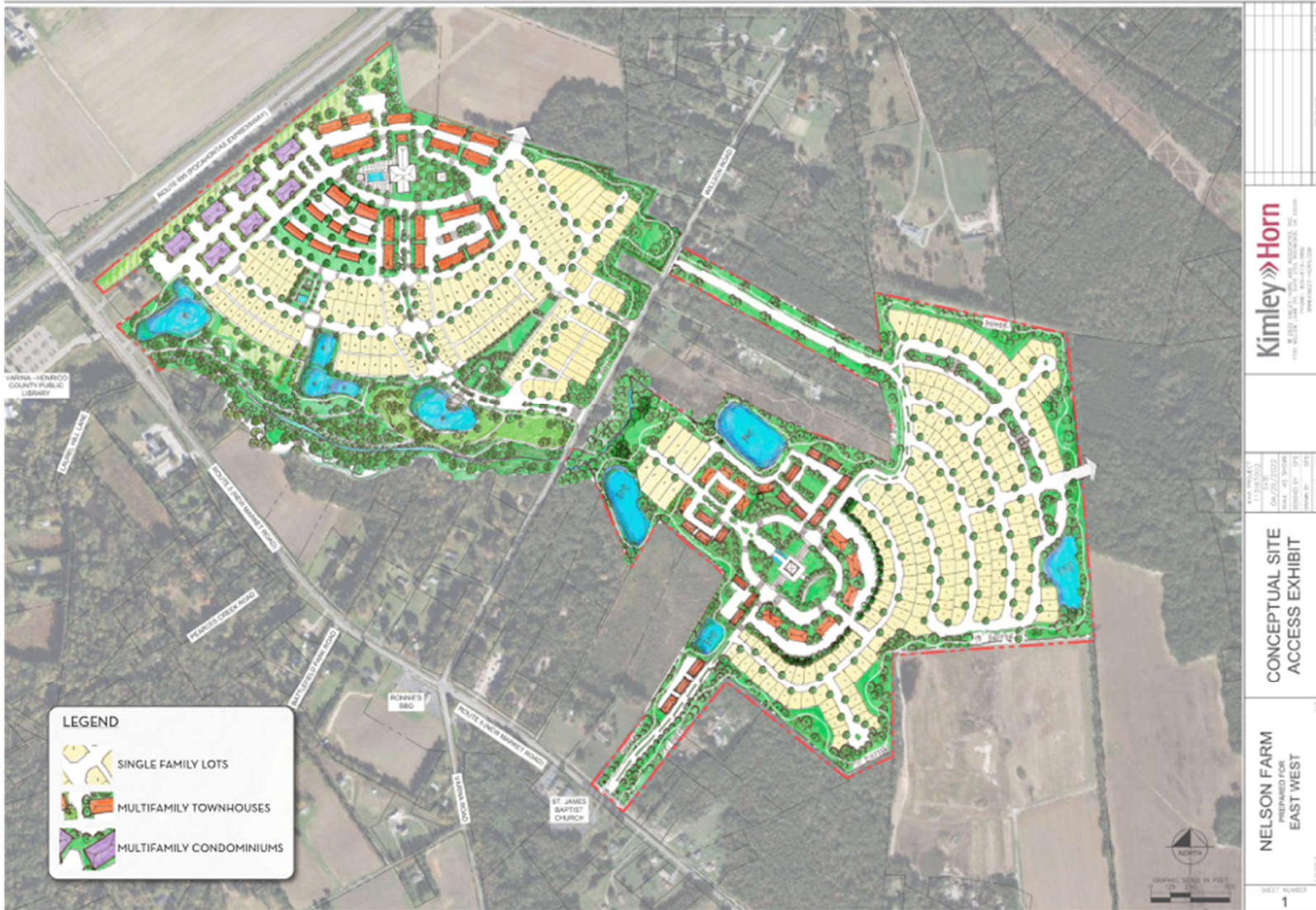
varina



Proposal For Development By

East West
COMMUNITIES

ARCADIA ILLUSTRATIVE MASTER PLAN



LEGEND

-  SINGLE FAMILY LOTS
-  MULTIFAMILY TOWNHOUSES
-  MULTIFAMILY CONDOMINIUMS

 <p>Kimley-Horn INCORPORATED 11111 FIVE OAKS SUITE 100 DALLAS, TEXAS 75243 PHONE: 972.316.7000 WWW.KIMLEY-HORN.COM</p>	
<p>PROJECT NO. 11111 FIVE OAKS DATE: 04/27/2022 DRAWN BY: JH CHECKED BY: JH DATE: 04/27/2022</p>	<p>CONCEPTUAL SITE ACCESS EXHIBIT</p>
<p>NELSON FARM PREPARED FOR EAST WEST</p>	<p>1/4" = 1" = 100'</p> <p>GRAPHIC SCALE IN FEET 0 25 50 75 100</p>
<p>SHEET NUMBER 1</p>	<p>DATE: 04/27/2022</p>

This is an artist conception and does not constitute any commitment from the developer. The lot lines, widths and depths are conceptual and subject to change.



ARCADIA WEST MASTER PLAN VISION



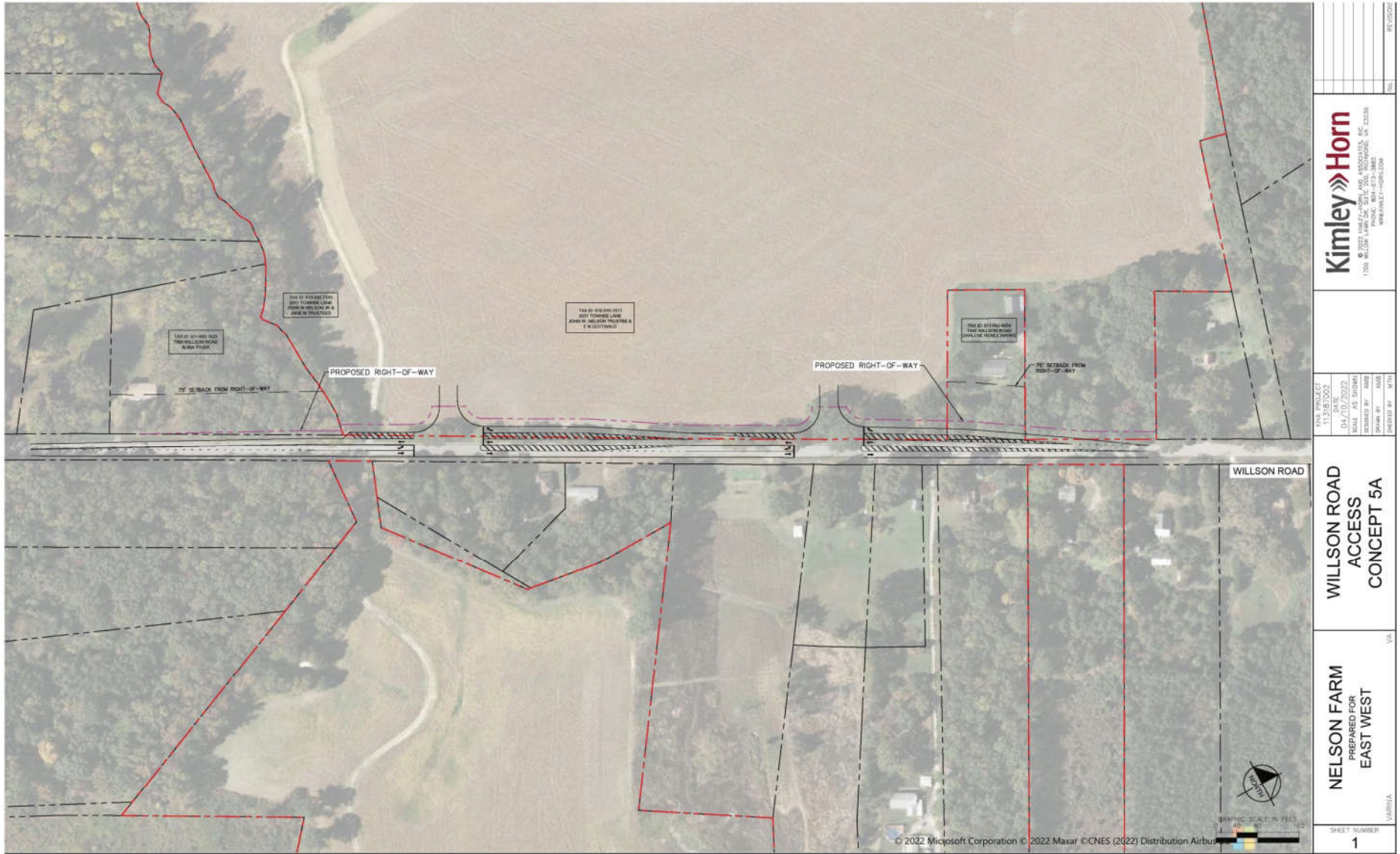
This is an artist conception and does not constitute any commitment from the developer. The lot lines, widths and depths are conceptual and subject to change.

 **ARCADIA**

ARCADIA EAST MASTER PLAN VISION 1



ARCADIA PLANS FOR WILLSON ROAD WIDENING



 1700 MILLER LANE, SUITE 200, SCARSDALE, NY 11783 PHONE: 845-433-3883 WWW.KIMLEY-HORN.COM	NO.	REVISED
KIMLEY-HORN PROJECT 11-21872002 DATE: 04/10/2022 SCALE: AS SHOWN DESIGNED BY: JMB DRAWN BY: JMB CHECKED BY: KPT	WILLSON ROAD ACCESS CONCEPT 5A	VIA NELSON FARM PREPARED FOR EAST WEST
SHEET NUMBER 1	WBR/HA	

ARCADIA PLANS FOR NORTH BOUND WILLSON ROAD WIDENING



ARCADIA PLANS FOR SOUTH BOUND WILLSON ROAD WIDENING



ARTS & CRAFTS

The following is an example of the Arts & Crafts style:



This style is derived from the traditions of Bungalow and Craftsman houses of the great prairie states. Characterized by an eclectic mix of architectural elements, this enduring style flourished in the early twentieth century. The Arts & Crafts Style is noted for its broad open porches, low sloping roofs with deep overhangs, nested gables and asymmetrical compositions. Window patterns are a simple 3 over 1, 4 over 1, 6 over 1 or 9 over 1. Columns can be full height or placed on piers; chamfered, squared, or angled. Round columns are generally not associated with this style. First floor height can be 9 ft or 10 ft; second floor at 9 ft.

5.3 CLASSICAL

The following is an example of the Classical style:



The Classical style is a timeless category that has its origins in ancient Greco-Roman architecture. Colonial, Colonial Revival, Georgian, Greek Revival and Neo-Classical are all subcategories of this style. Its design hallmarks include simple symmetrical forms with dominant front entry porch or portico supported by either round or squared columns or pilasters. There is an emphasis on simple crown and decorative mouldings. The Roof generally uses 10:12 or 12:12 pitches and gabled, but can also employ hips. When Cottage forms are used, designs are generally kept simple and diminutive with low 8:12 – 10:12 pitched roofs with decorative front entry porches. Generally, windows are symmetrically placed with tight muntin patterns of 6 over 6, 6 over 9, 9 over 9,

The renderings shown are an artist conception and do not constitute any commitment from the developer.

CONTEMPORARY

The following is an example of the Contemporary style:



Contemporary architecture is often viewed as a broad-brushed category, but for the Arcadia community, this category is meant to allow more streamlined facades that are based on traditional profiles. Examples of this can be found in millennial reworkings of American Farmhouse architecture. Generally, contemporary styles reflect a wide variety of shapes and designs: streamlined roofs with no overhangs, flat roofs with wide overhangs, or sometimes a combination thereof. Windows are often casements and without muntins. If columns are employed, they are often square and with little ornamentation.

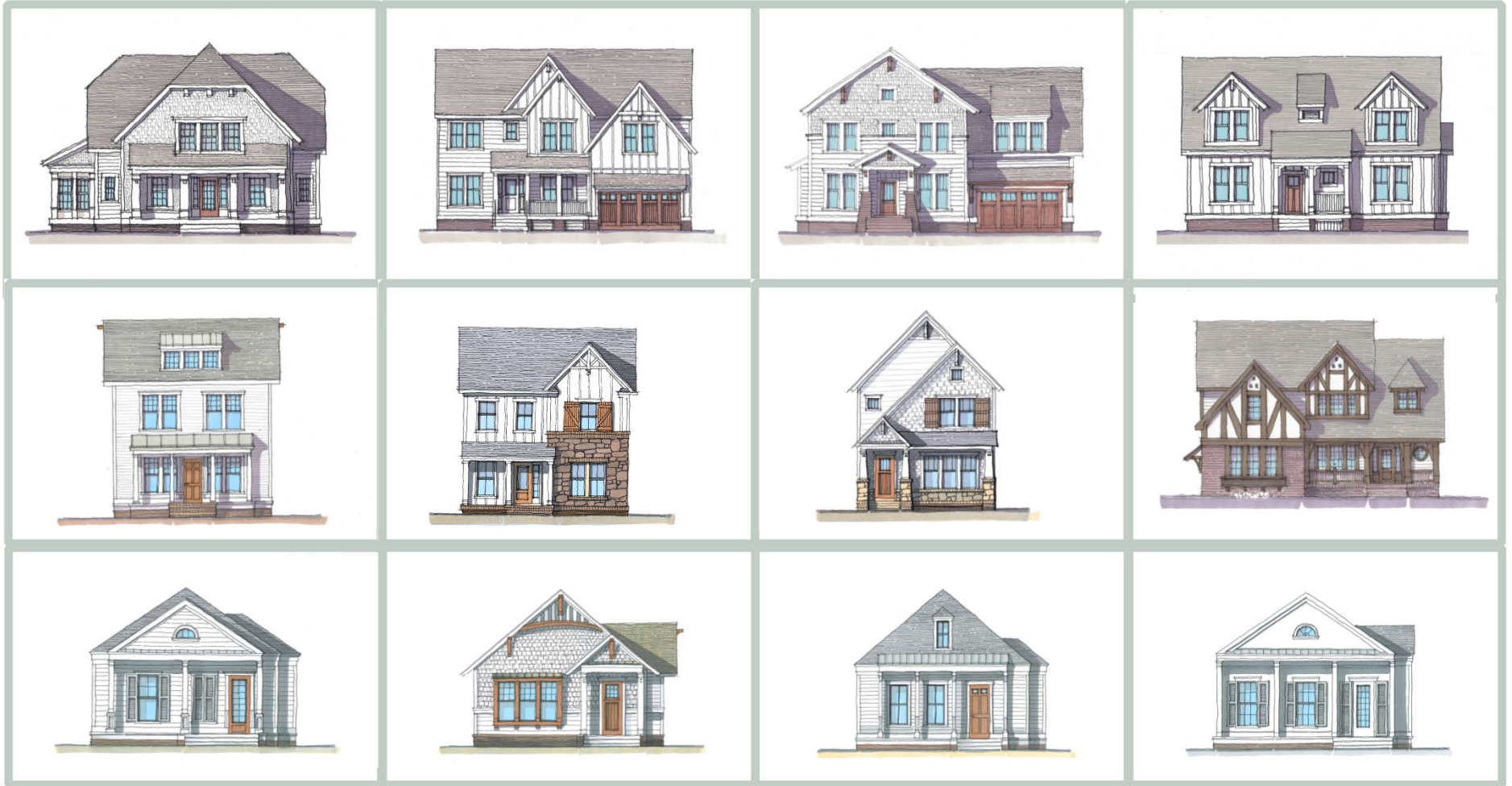
EUROPEAN ROMANTIC

The following is an example of the European Romantic style:



This style is based on early twentieth century interpretations of English and French architecture by American architects and builders. The source of the design comes from medieval English and French Norman cottages, manor houses and rural village vernacular structures. Elizabethan, French Norman, French Provincial and English Tudor are subcategories of this style. Cottage designs for this style are kept simple, but quirky. Gabled or hipped roofs are steeply pitched at 12:12 to 12:18 with exterior envelopes showing half timbering with either panel or lap siding between. It is normal for French styles to sport roof finials. Windows are large and multipaned and can employ a variety of muntins patterns from diagonal - diamond shapes to 4 over 4, 6 over 6, 9 over 9 and 12 over 12 patterns. First floor height can be 9 ft or 10 ft; second floor at 8 ft - 9 ft.

REPRESENTATIVE HOMES



The renderings shown are an artist conception and do not constitute any commitment from the developer.

REPRESENTATIVE HOMES



The renderings shown are an artist conception and do not constitute any commitment from the developer.