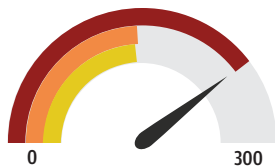


## 5-column grid

### Health disparities in Hopewell City

Hopewell's life expectancy is five years shorter than the state average. Its cancer mortality rate is nearly double the state average, according to population health data, and its rates of hospitalization for asthma more than three times the Virginia norm.

Death rate per 100,000 people



**Hopewell:** 230.6  
**Virginia:** 149.8  
**U.S.:** 149.4

Asthma hospitalizations



**Hopewell:** 1,479.33  
**Virginia:** 487.34

Source: Centers for Disease Control and Prevention

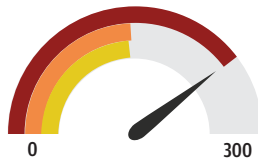
Lee Enterprises graphic

## 6-column grid

### Health disparities in Hopewell City

Hopewell's life expectancy is five years shorter than the state average. Its cancer mortality rate is nearly double the state average, according to population health data, and its rates of hospitalization for asthma more than three times the Virginia norm.

Death rate per 100,000 people



**Hopewell:** 230.6  
**Virginia:** 149.8  
**U.S.:** 149.4

Source: Centers for Disease Control and Prevention

Asthma hospitalizations



**Hopewell:** 1,479.33  
**Virginia:** 487.34

Lee Enterprises graphic