

Purdue trustees select first Asian president



VAL ELLIS | SUMMER JOURNALIST
Future Purdue President Mung Chiang shakes the hand of current President Mitch Daniels, who will step down Dec. 31, after trustees voted him in Friday afternoon.

BY VAL ELLIS AND JAMES KLING
Summer Journalists

Purdue’s trustees selected current Dean of Engineering Mung Chiang as the next president Friday as they also announced Mitch Daniels will step down from the post Dec. 31.

Chiang, 45, who was named dean in 2017 and served as the science and technology adviser to the US secretary of state between 2019 and 2020, is the first Asian Purdue president in its 153-year history.

“I think it’s an inspirational thing for students and staff to see,” trustees Chairman Michael Berghoff said after Friday’s meeting. “I think it’s helpful that a diverse leader is in a

visible spot as the president of the university. It’ll be good for Purdue, it’ll be good for our students, it will be good for us.”

Chiang’s term as dean ends July 1, but he will continue as the executive vice president for strategic resources. Chiang said he is proud of the opportunity.

“I am an immigrant indeed to this greatest nation in human history. I am an immigrant who I guess is a living demonstration of the American dream,” Chiang said after the announcement. “I’m a proud American and proud to serve my country, the United States of America, in higher education and in a public land grant

institution, as well as in government, as I did spend one year in Washington D.C. in service of the state department.”

Chiang said he has big shoes to fill.

“WThere’s only one Mitch Daniels in American higher education, an Mitch is a transformational visionary,” Chiang said. “He’s one of the top 50 leaders in the world. I benefit tremendously from his mentorship. And I will continue to learn from him, but it’s probably obvious that I cannot ride a Harley Davidson and I probably consume more ice cream (than him).”

Chiang had other opportunities to

See PRESIDENT | Page 4

Welcome to Purdue!



DAVID HICKEY | SENIOR PHOTOGRAPHER/
The Bell Tower is the focal point of Purdue’s campus.

Here’s who we are and what we’re about

BY THE EXPONENT STAFF

Hello!

We hope you have a great four years here.

The Exponent is a fully

independent, student-run newspaper that covers all things Purdue and reports in the Greater Lafayette area as well. We have been independent for over 50 years,

and we enjoy the freedom to be honest and true while reporting on our university.

While you’re here, we hope to be your go-to source for news. We cover a variety of topics, like campus news, student life, clubs, academic news, housing, faculty life, crime, city events, local politics and, of course, sports.

While we love to bring you up to date on all the coolest things going on, we also have a responsibility to hold the university and other local powers accountable. If you read the Exponent, you’ll be sure to know everything — good or bad — that happens in your community.

Reading the Exponent is

free. You can pick up a copy at any of our pickup locations on or around campus. Stacks of Exponents are delivered to the dining courts, most residence halls, almost every fraternity, sorority or cooperative house, the Union hotel and the Stewart

See EXPONENT | Page 3

Trustees approve Aspire

Extra rooms expected to ease housing shortage

BY VAL ELLIS AND JAMES KLING
Summer Journalists

Purdue’s Board of Trustees has approved the purchase of Aspire Apartments, an 831-bed housing complex in Discovery Park.

“There’s obvious benefits versus building (a new housing complex),” trustee Chris Ruhl said at Friday morning’s meeting. “One is that the cost to build right now would be substantially 20% (or) 25% higher than the purchase price. And obviously, if you build it, (it would) take two or three years versus we’re going to have it this fall.”

The cost of the purchase was not specified during the discussion. Attempts to reach a Purdue official regarding the acquisition cost were not successful Friday.

The acquisition should help address Purdue’s increasingly large freshman classes and its struggles to house all of its students.

President Mitch Daniels specifically referred to the growth of the student population as a way officials have sustained the tuition freeze.

The property will be purchased through the Purdue Research Foundation and eventually transferred to the university. The stated reason for this was because of the property’s “expedited sales process,” according to the resolution.

“Even though we have Aspire coming on, I think we need to be thinking about what we’re going to do two or three years from now,” trustee Sonny Beck said. “I think we should continue to have a set of plans ready to go.”

Ruhl discussed the future of Meredith Hall.

“We’re looking at all of our housing stock and forecasting appropriate reinvestments in properties we already have, and redevelopment of areas like Meredith (Hall),” Ruhl said.

The West Lafayette City Council ended its unofficial moratorium on building new “high-density housing” at its latest meeting this week, approving two new housing developments that will contain a net total of 866 beds.

Purdue trustees also approved the William D. Young Institute for Advanced Manufacturing of Pharmaceuticals.

“The (Institute) is really going to

See ASPIRE | Page 4

Cycling Club offers free repairs, advice

BY JAMES KLING
Summer Journalist

With Purdue’s reputation of “growing” bikes in trees, accessible bike repair and safety knowledge is crucial for anyone with a bicycle on campus.

The Cycling Club at Purdue will be seen setting up tool boxes and bike stands in the fall to offer free services to cyclists around Purdue.

The bike repair sessions will be offered twice a week: Wednesdays from 11 a.m. to 2 p.m. in front of the Bechtel Innovation and Design Center, and Thursdays at the Purdue Farmers Market near the sustainability tent from 11 a.m. to 3 p.m.

The Cycling Club is made up of about 16 people, with about seven members expected at each repair session, said Ian Bowley, a sophomore in the College of Engineering and the head mechanic.

The repair sessions began last fall, when Lunden Friberg, a senior in health sciences and the former ride safety officer, brought a personal toolbox and started repairing bikes at the farmers market. That quickly grew in popularity, said Shawn Prosky, club president and a graduate engineering student.

“The farmers market is a big hit,” Bowley said. “We’ve had close to 20 people at once come through.”

The club sees deflated tubes, gear issues and brake issues most often but will fix most minor problems.

Once a bike is in need of repair, the club will set it on a bike stand and a mechanic will identify the damage and repair it.

“Our goal is to have the repair done in 20 minutes,” Bowley said. “If it’s longer than that we either send them to a repair shop or schedule a time outside of the usual repair time.”

Some bike repairs are too big to be taken care of in one of their repair sessions. Extensive problems could be if a bike needs a whole new crank set, or if the wheel is bent and needs straightened, Bowley said.

In these circumstances, the cyclist may have to join the club and pay the annual dues of \$40 to get those repairs through the club. It

would also give them access to a community of cyclists at Purdue, Bowley said. Otherwise, he recommends the local bike shops Virtuous Cycles or Hodson’s Bay Company for bigger repairs.

While bike repairs are valuable, safety is also a priority for the club, Prosky said.

What types of locks are most effective and where one can safely lock their bike are important discussions, especially on a campus where bicycle thefts appear often on police logs.

“My advice would be to find a way to get it into your room,” Bowley said, “or get a good lock ... called a U-lock. It basically has a U-shape with a bar that locks across it.”



GEAR UP TO DO IT ALL

Education Offer

RECEIVE A \$100 E-GIFT CARD FOR PURCHASES \$799+* (or) RECEIVE A \$200 E-GIFT CARD FOR PURCHASES \$1,399+*


Shop at Dell.com/Purdue

Have questions? Contact Kyle_Amos@Dell.com




SAFE & SOUND

Brought to you by
Wintek Powered by Tipmont



Imagine what better internet can do for your business.

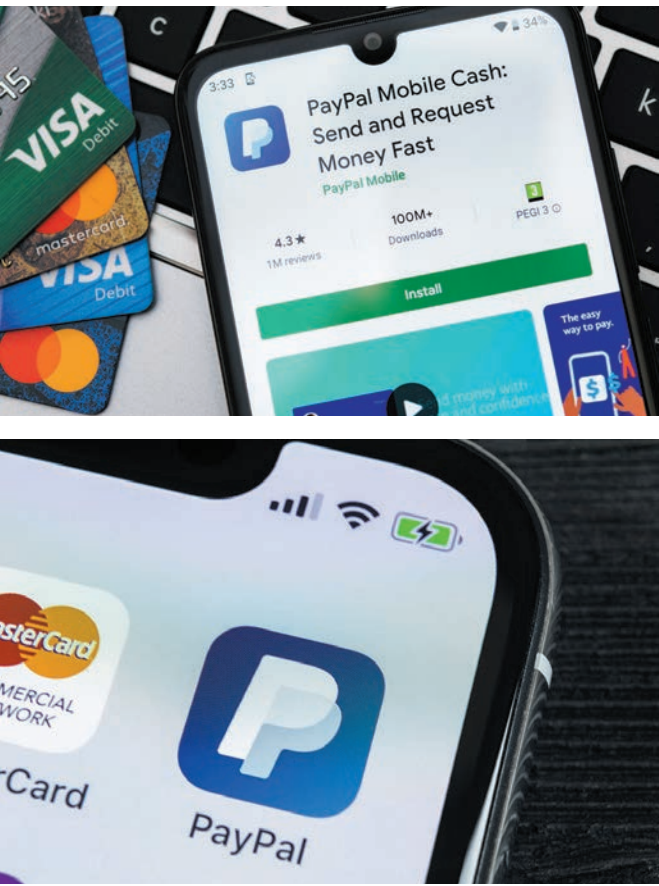
Is your business ready to benefit from the fastest speeds and highest reliability in Greater Lafayette?



wintek
BUSINESS SOLUTIONS

wintek.com / (765) 742-8428

Cash in on transfer app safety tips



BY WINTEK

Cash is like the vinyl record of financial transactions — long ago outpaced by digital technologies but still old-school cool. While it’s good to keep some actual cash on hand for emergencies, there’s nothing simpler than paying pals back by sending with a swipe or transferring with a tap to handle your bills.

Apps that transfer cash were here to stay once we turned PayPal and Venmo into verbs. But consider this: Using cash transfer apps like those — or Cash App, Google Pay, Apple Pay and Zelle — is like carrying around all the money you have. (Installing a locator app is a smart start; should you lose your phone, you can find and securely lock it down from a distance.)

You know not to flash too much cash, so it’s smart to take precautions that ensure all of your digital transactions stay speedy and secure.

Choose PINs and Passwords Carefully

Smart, strong passwords and PINs — the cornerstones of any sufficiently cautious digital decision. Make them hard to guess, and use a different one for each app you might use. Plus, nearly all cash transfer apps require email. Safeguard that account with a powerful password, too.

Use Multi-Factor Authentication if Possible

Take advantage of multiple methods to authenticate your

identity if they’re offered — such as biometric authentication (like your fingerprint) or a unique, one-time code sent to you.

Don’t Share Transaction Details

No one needs to know who paid whom for sushi last night. Limit or turn off any social-sharing features.

Avoid Transfers on Public WiFi Networks

Security can be a concern on public WiFi networks, through which criminals can access devices and information. If possible, wait to complete money transfers until you get home — perhaps over your speedy, secure Wintek connection!

Watch Out for Scams

Scammers can pretend to be loved ones in trouble asking for money, disguise themselves as unsolicited tech support, or insist you’ve won a prize for which you must pay fees.

As always: If it seems suspicious, trust your gut. Never pay, or share information with, a stranger.

If you get an unexpected request for money from someone you know, reach out through other means to ensure it’s really them. And if you think you’ve paid a scammer, seek official support from your app or report the fraud at reportfraud.ftc.gov.

Check out these campus safety tips

BY EXPONENT
ADVERTISING DEPARTMENT

According to the 2021 Purdue University Annual Security and Fire Safety Report published on Purdue West Lafayette’s website and updated in March 2022, instances of reported crimes in most cases have declined in the last three years. That is due, in part, to a number of programs and services offered by Purdue Police. Below is a quick overview of these programs. Information has been gathered for this list from Purdue’s website.

Bicycle Registration

Students are encouraged to register their bikes with Transportation Services, to aid police in recovering the bike if it is stolen. Download the 529Garage app, then bring your bike and phone to Transportation Services or the Police Department

Lighting on Campus

Sidewalks on campus are well lit, but routinely

Follow @purdueemergency on Twitter for updates on any campus emergency situations, such as tornado warnings.

surveyed for brightness and any trees or shrubs that need to be trimmed. To suggest additional lighting on campus, contact Purdue Police at 765-494-8221.

Safe Walk Program

Want a member of the Purdue Student Security Patrol or Purdue Police officer to walk you safely to and from a campus building? Call 765-494-7233, 24 hours a day, seven days a week.

Student Security Patrol

This program pays Purdue students to assist the police department with the Safe Walk Program, and extra observation in parking garages and other areas. Student patrol members

carry two-way radios and report any suspicious activity to police. To apply to be a patrol person, visit the Student Security Patrol page on Purdue’s website.

Emergency Call Boxes

Several yellow boxes with blue lights are placed around campus, offering one-touch access to Purdue Police.

Building Access and Security

Most academic buildings remain unlocked late at night for classes, projects and special events. Most undergraduate student residences are locked from 11 p.m. to 6 a.m., and a university ID is required to enter between these times.

Many residences staff an access clerk at the single entry point to monitor residents and escorted guests who are entering or leaving after hours. Guests must sign a register, and residents must show the clerk their university ID.

Laptop Registration

Students are encouraged to register their personal laptops with Purdue Police to assist with recovering stolen computers. Complete the registration form on Purdue’s website by searching Laptop Computer Registration.

Crisis Intervention Team

Purdue Police are trained to recognize when a person’s actions may be the result of mental health issues, and can tap into county-wide resources such as hospitals, counselors, courts and law enforcement from various agencies to provide those needing it with professional help.



Five things to do for safety, peace of mind



BY EXPONENT
ADVERTISING DEPARTMENT

Administrators and security personnel work to make school environments as safe as possible, but incidents can happen on any campus. Students need not live in fear on campus, but embracing various safety measures can bring peace of mind.

- Hide or lock up valuables. Devices and cash are the most commonly stolen possessions, but text books, bikes, jewelry and food are also common. Refrain from propping doors open and lock dorm rooms when leaving. Consider buying a dorm room safe.

- Prepare for emergencies. Research the school’s policies on emergency preparedness. Some have text alert systems for emergency situations like adverse weather conditions, while others have clear guidelines on what students should do if they feel threatened in any way. Participate in fire drills and learn the nearest exits and

protocols for emergency evacuations.

- Use the buddy system. Most campuses are safe to move around, but it can’t hurt to walk with a friend or use the Safe Walk Program. Security experts say elevators and stairwells are common places for assailants to target victims. If you ever feel uncomfortable, trust your instincts and err on the side of caution.

- Be alert when ridesharing. Always identify your driver and vehicle before getting in and ask the driver to identify your name, as they will have it and your destination. Wait for the ride in a safe place, and try to avoid riding alone.

- Maintain personal health. Be sure to visit the doctor and stay current on necessary vaccinations.

Campus and dorm safety is multifaceted. Informed students can reduce their risk of being involved in accidents or being targeted by criminals.

Meet some of our staff

Why should you join us?
Alex Haddon
Junior visual arts major



I love working at the Exponent because there are so many opportunities to learn unique things. Starting here as a graphic artist rapidly improved my artistic abilities, being an editor taught me how to manage a team, and now I get to learn how to be a real journalist. I get to meet interesting people all over Indiana and discover places I never otherwise would have gone to.

Val Ellis
Sophomore in engineering



I joined the Exponent as a sports reporter because I thought to myself, “I know too much about sports to not do anything with it.” I re-

alized fairly quickly that I did not know near as much as I had thought. But being a part of the Exponent has helped me learn about topics and subjects I never would have known existed had I not come here. I’ve gotten to talk to some of the most delightful people I’ve ever met and listen to some of the most interesting stories I’ve ever heard.

James Kling
Junior in political science and history



The Exponent has given me so many opportunities for so many things that I have always wanted to do. Not only does it give me the opportunity to improve my writing and speaking skills, it has also given me opportunities just to go out and see what is happening around me.

I can see a local professor receive recognition for something she has been doing for the Washington Post, I can throw axes for a story, and I see monks at a sanctuary for

retired research primates.

I would probably have never seen or done these things without working for the Exponent, and it is certainly something I would recommend for anyone who wants to see more and do more in the local community.

Susan Wu
Junior in computer science



I came to the Exponent because I wanted to improve my writing. I just got sick of hating what I wrote every night. It was like sitting in a dark, stagnating puddle: a situation that never got any better.

In my first week on summer staff, a veteran I had interviewed for an article firmly shook my hand then thanked and praised me. Some of them were crying as they received a proper welcome for the first time after they returned from the Honor Flight of Greater Lafayette. I hadn’t realized how poorly Vietnam veterans were treated when they returned home, how important it was to cover this event.

The article I had written was immediately criticized by our previous editor-in-chief. After revising, I noticed it was much stronger.

I covered a protest at the Tippecanoe County Courthouse about the overturning of Roe v. Wade. One of the protesters said she’s protesting to give her disabled niece a choice in case she was ever raped. I had never thought about that before.

I covered a case where a student was scammed out of \$150,000. I covered thefts and drug dealings and car crashes. There could be a theft on the same road you park your car. Someone threw a rock through a window on the same street I parked mine. I would never have known the strange happenings and secrets of this place even if I had stayed here for 10 years.

That was all in my first week. I swear by it.

What other jobs allow you to attend fun and exciting local events with your friends and get paid for it? What other jobs let you ask police personally about what’s going on? What else could you do that helps people through sharing their stories with others?

Step out of the puddle. Join the Exponent.

EXPONENT

Continued from Page 1.

Center, some academic buildings and select businesses in West Lafayette and Lafayette.

If you can’t find a pickup location, you can come right to our office to get a copy. We are located on the second floor of the University Lutheran building at 460 Northwestern Avenue.

For a complete list of all our pickup locations, visit purdueexponent.org. There you can also subscribe to our free virtual newsletter, which will send links to our 10 most recent stories straight to your email every Tuesday and Friday.

For a full virtual subscription, you can receive virtual PDFs of each edition for \$50 a year. The Exponent will also mail physical editions right to your home for \$140 a year.

Like many newspapers nowadays, not all of our stories will make the print editions, and

not all of our print content will go online. To stay up-to-date on our online content, follow us on our social media accounts: Facebook, Twitter, Instagram, TikTok.

If you like our content, if you take issues with a story, or even if you just want to make your voice heard on a topic that’s important to you, you can write us a letter to the editor. To do so, follow the link on our website or just write us a physical letter.

Our staff is comprised of roughly 80 people between reporters, photographers, editors, artists and composers.

We’re always ready to welcome more journalists to the team. If you have an interest in reporting, photography, videography, copy editing, graphic design, page design or cartoons, be sure to **come to our callout at 6:30 p.m. Aug. 31** in our office. We will teach you what you need to know.

We hope to see you there!

Man arrested after allegedly breaking Harry’s Chocolate Shop window



EXPONENT FILE PHOTO

The line for Harry’s Chocolate Shop stretches down State Street.

STAFF REPORTS

A Zionsville, Indiana, man was arrested shortly after 2 a.m. Friday after allegedly breaking a window at Harry’s Chocolate Shop on State Street.

The customer, John Kester,

was refused service because he was intoxicated and was asked to leave, West Lafayette Police Department Capt. Adam Ferguson said. Kester returned to the bar and was denied entry.

In response, he went to the west side of the bar along Pierce Street, where he pulled

back the screen of one of the windows and broke it, Ferguson said. Kester fled the area but was located by a Purdue officer a short distance away.

Kester was charged Friday with resisting law enforcement and criminal mischief, according to court records.

SOCIETY YOGA

Join the connection.

STUDENT RATES AVAILABLE

PURDUE CONTEMPORARY DANCE COMPANY

FALL AUDITIONS

TUESDAY, AUGUST 30 6-8 PM

INSTRUCTIONS FOR AUDITIONS

1. Please fill out our online audition form at the scan code link below: <https://cla.purdue.edu/academic/rueffschool/dance/calendar/index.html>
2. Once you complete & download your audition form, email it to murra113@purdue.edu.
3. Deadline for audition forms: Tuesday, August 30 by 4:00 pm.
4. Learn and perform short movement phrases in the dance studio, 6-8pm. PAO HALL 1171.

Auditions are for the PCDC Winter Dance Works Concert!

PURDUE UNIVERSITY *Open to all Majors & Movement Experience!*

Division of Dance info: dapdance@groups.purdue.edu
Rueff School of Design, Art, and Performance, PAO HALL

HOW CAN EXPONENT CLASSIFIEDS HELP YOU?

1. Find employment.
2. Announce your callout or event.
3. Find your next apartment.
4. Find a roommate.
5. Look for a car, bike or scooter.
6. Sublet your room or apartment.
7. Leave messages for friends.
8. Sell your unwanted items.

Affordable advertising available in print and online purdueexponent.org.

Call 765.743.1111 ext 100 or email: adproduction@purdueexponent.org

Students are eligible for **FREE** classified word ads with student ID. Some restrictions apply.

THE EXPONENT

Digital Briefing Newsletter

HEADLINES DELIVERED STRAIGHT TO YOUR INBOX EVERY TUESDAY & FRIDAY

FREE!

To subscribe visit purdueexponent.org/newsletter

THE EXPONENT

The Exponent
460 Northwestern Ave., 2nd floor
PO Box 2506
West Lafayette, IN 47996-0506
Hours: 8:30 a.m. to 5 p.m. Monday through Friday
Phone (765) 743-1111
Website: www.purdueexponent.org

Summer Editorial Staff

VAL ELLIS ALEX HADDON	PAT KUHNLE Publisher & General Manager	INGRAHAM VANCEL Production Director
STACEY KELLOGG Ad Director	MADISON HAYNES Sales & Marketing Manager	DEANNA HUTTS Bookkeeper/Accountant

Copyright 2022, Purdue Student Publishing Foundation

The Exponent is the independent student media organization serving the Purdue University community. We can be found in print editions on Mondays and Thursdays in residence halls, classroom buildings and selected near campus businesses. We can also be found online (www.purdueexponent.org) and on Facebook, Instagram, Twitter, TikTok and Spotlight News app.

Electronic subscriptions \$50 per year are available. First class subscription rates are available by request (help@purdueexponent.org).

Single copies at bulk distribution sites are free. For additional copies, contact our business office.

The Exponent is published by the Purdue Student Publishing Foundation, a non-profit educational organization. PSPF board chair is Samuel Bernicke.

New Purdue president has taste for ice cream

STAFF REPORTS

When Mung Chiang first arrived on campus five years ago, the then-39-year-old began his tenure as Purdue's new engineering dean by meeting with professors and faculty members in the College of Engineering during a "listening tour," as he called it.

A listening tour this time around will be much more extensive, as he prepares to take over the job as Purdue president from Mitch Daniels, who announced his intention Friday to retire at the end of the year.

Chiang told an Exponent reporter at the time that the pseudo-foil to his expertise in solving the toughest of problems is surprising: poetry.

"When there are times of sweat and toil, the artistic side of what's in my mind helps to give me a balance. It gives me the right dimension to think about that on a day-to-day (basis)," Chiang said about how poetry fit into his life as an expert in a STEM field. "(Poetry and engineering) are not antagonistic. They are not opposites of each other."

Where did he learn this balance? Most likely from his doctoral advisers at Stanford, Stephen Boyd and Thomas Cover, both of whom are legendary researchers in their fields. Although this helps us understand how Chiang tackles obstacles, his vision for the direction of Purdue engineering is rooted in his own story.

Chiang will take over at the end of the year after Daniels retires



Mung Chiang

PURDUE UNIVERSITY

As an immigrant who landed in America from China via Hong Kong, Chiang's conduit for success has been through academia. There is nothing more valuable to him than an education, simply because it is the great equalizer.

"I grew up in multiple environments, including environments that could be described as economically harsh," Chiang said. "And I appreciate

when society says that independent of your background, you have a shot at being educated."

He eagerly motioned out the door of his office and over the third-floor bridge, where new students mingle and converse during their STAR orientations.

"I am here sitting in a room on the third floor of an engineering hall that bears the name of Neil Armstrong.

That's a pretty incredible feeling," Chiang said. "Every day I walk into this building through the atrium, past the front door with his statue. And it is a tremendous feeling of honor and privilege to be a part of this proud heritage."

Looking at his past at Stanford and Princeton, Chiang's "listening tour" move might seem like an outlier. He is, to be frank, a doer.

"Everything that I've seen that he accomplished (at Princeton) was done a timeline that is hugely compressed," Anne-Marie Maman, executive director of the Princeton Entrepreneurship Council, said at the time. "He is running on all cylinders and gets things done very expeditiously."

Chiang left his mark all over the Ivy League institution, including establishing the PEC, which serves as an umbrella for groups engaged in entrepreneurship on campus. He arrived in West Lafayette towing a resume from Princeton that could put the some of the brightest minds in America to shame, but Chiang is not one to brag about his successes.

His former colleagues, however, leapt at the opportunity.

"That is a great quality to have in an administrator: someone who can detect the high-quality scholarship," said professor Sergio Verdu, a close colleague in the electrical engineering department at Princeton. "As the dean of engineering, he's going to be

a key figure in the future direction of hires in the College of Engineering. You have someone who really puts quality above everything else, and that is very important."

But coming to Purdue means a major shift in job description for Chiang. As an educator-turned-leader, he hopes to bring to keep Purdue engineering on the forefront of change — whatever that change may be.

"We will continue to innovate how we think about higher education," Chiang emphasized.

The father of three earned the reputation as an ice cream aficionado after frequenting many ice cream parlors around Princeton. Despite his busy schedule, Chiang finds also time for ice cream.

"If you count ice cream tasting as a profession," he laughs, "that's probably the thing that I am best at."

During a one-year leave that began in late 2019, Chiang served the US Department of State as the director of the Office of the Science and Technology Adviser to the secretary of state, which was created in 2000 in response to a study by the National Academy of Sciences. As the principal scientist in the state department, Chiang was the sixth holder of the office and the first engineer.

In 2020, Chiang was elected one of seven international fellows of the Royal Swedish Academy of Engineering Sciences.

PRESIDENT

Continued from Page 1.

become a university president elsewhere, notably turning down a job at the University of South Carolina after being considered the top choice for the job, according to the Associated Press.

"My kids are also just so happy that we're going to stay for a long, long time in Indiana," said Chiang, whose stated reason for turning down the University of South Carolina presidency was to focus on his family. "And I look at the spirit of the Boilermakers. It is truly unique. I guess I'm biased, but there's no other place like Purdue, and I'm so humbled to be able to continue to serve it."

Chiang welcomes new students to West Lafayette and the regional campuses.

"This past (Purdue) Day of Giving I had the chance to run with fellow students to raise funding for student organizations ... maybe over morning jogs I would love to get together with (students)," Chiang said.

Chiang said he wants to still play an active role with students.

"I would like to teach an undergraduate

course in wireless networking, so I better get prepared for that," he said. "And my door, physical and virtual door, is always open, and I want to listen to them."

Daniels, 73, has been president of Purdue since January 2013. That same year, Purdue began its tuition freeze.

"We were glad we could do it once. I was kind of surprised to do it twice. And every year, you know, it's been a source of satisfaction," Daniels said Friday. "(The tuition freeze) has enabled many students from Indiana and elsewhere to have high learning and high value. The board has indicated its desire to continue the tuition freeze for as long as we can. And we will continue to go forward with affordability as a top priority for Purdue."

Berghoff said the tuition freeze is in place until 2024.

"Not firm but I would say that it is highly likely" that tuition will be frozen past then, Berghoff said.

Daniels notified the board that his term "might be closer to the end than the beginning" a couple of years ago, Berghoff said. Daniels told the board in April that he plans to step down at the end of the year.

"We had an opportunity to observe candidates for a couple, three years," Berghoff said.

"And in the end, when we looked at the skill set, Dean Mung's skill set was well suited for where Purdue is going. ... We have a university that 65% of the students are in STEM. He has that background."

The fact that Daniels' upcoming resignation and the search for a successor had not been made public did not set well with at least one professor Friday.

"Secret search — once again the political appointees on the Board of Trustees show their arrogance and disrespect for the faculty," tweeted David Sanders, a member of the Faculty Senate, whose members have consistently complained that they are often not involved in university decision-making.

ASPIRE

Continued from Page 1.

give us an opportunity to bring together the disciplines that relate to pharmaceutical manufacturing," said Eric Barker, the Jeannie and Jim Chaney Dean of Pharmacy.

"This is an area of national concern, and having pharmaceutical manufacturing capabilities addressing the ability to manufacture advanced therapies ... are all new technologies we need," Barker said.

Barker noted that not many universities have pharmaceutical manufacturing capabilities.

"There's only a handful of schools that really work heavily in the pharmaceutical manufacturing space," Barker said. "Rutgers, Delaware, Virginia and Purdue are probably the top four that come to mind."

More Than A Paycheck

Finding Fulfillment in the Workforce



How many times have you heard the old saying, "College is the best four years of your life?" Sure, that idea feels great while you're in the thick of things on campus: making new friendships, enjoying rich experiences, and challenging yourself to grow as a person. But what about your experiences off-campus? And furthermore, how will this expression feel as you're leaving college? Will you really be moving on from the best years of your life?

The off-campus job you work while going through school and the career you embark on after graduation can and should be sources of personal fulfillment. And while there's no one-size-fits-all formula for ensuring you land a gig that fills you with passion, here are a few things to consider while you're on the hunt for a job that means more to you than just money.

Variety

According to multiple surveys asking people why they enjoy their careers, many satisfied workers say they appreciate variety.



Few people dream of doing the same thing every single day, so be on the lookout for a job that keeps things fresh and stimulating on a day-to-day basis.

Impact

People are wired for results. We want to see the difference our work makes in the world, whether that means more profits for our employer or more positive change in our community. For a career that will keep you motivated in the long term, consider the ripples your work will actually make when applying to positions.



Pride

Even with the previous factor in mind, you still can't count on every aspect of your job always making waves you can measure or feel.



For the periods when impact is low, pride in your position will carry you through the grind. At Valley Oaks Health, for example, rehabilitating a person struggling

with addiction may be a long process that doesn't always return immediate gratification. However, our team members can always take pride in the fact that they're making a meaningful *effort* to improve an individual's life—and, by extension, the community overall.

V.I.P.

Do your best to remember these three factors while you're out on the job hunt. To keep them in mind, just remember this handy acronym: Variety, Impact, Pride—V. I. P.

And as an accomplished Purdue student, it also describes you: a Very Important Person.

As you step out into the world and embark on your college journey, you may find Valley Oaks Health a great place to work. We approach people from all walks of life with the mindset that all of them matter, and we check all the boxes described in this article, too. See below to learn more about working part- and full-time with us.

Work With Us

And Make Meaningful Change In Your Community

At Valley Oaks Health, we're helping people reach life's peaks by shining a light on the mental health concerns our community faces.

As a community mental health center, our mission is to provide high-quality mental health and addiction care services to those with the most need and least access to care. When you join our team, you'll be working with other passionate individuals dedicated to moving the needle of change.

The work you'll do at Valley Oaks Health can apply to a plethora of different career paths. You'll get experience in human services that will stay with you for the rest of your professional life. Plus, you'll still have plenty of time for your studies with our flexible scheduling.



Part-time and full-time positions available for all experience and skill levels. Learn more at StartAtValley.com.

Be part of the change. Be part of our team.

JOIN THE EXPONENT!

We are looking for:
Reporters, Photographers, Page Designers,
Advertising Content Creators,
Videographers & Delivery Drivers



Exponent alumni include:

- Pulitzer Prize winners
- Emmy winners
- Academy Award nominees
- US Ambassadors
- Presidential cabinet member
- Fortune 500 executives
- Judges and lawyers
- College professors
- Inventors
- Engineers
- Marketing executives
- Journalists and much more!

The Exponent Callout

August 30 | 6:30PM
460 Northwestern Ave., 2nd Floor
Enter through side door off parking lot

THE EXPONENT

Follow us on social!    

evergreen
CAMPUS RENTALS

Just a few beds left for '22-'23!

- 1-bedroom
- 2-bedroom
- Individual room leases



Available Parking Spaces Too!



Off-street parking spaces are available to the public on July 5th, 2022. Covered & open spaces at select locations around campus.

765-767-4000

PURDUE ALUMNI | **STUDENT EXPERIENCE**

GET CONNECTED TODAY, STAY CONNECTED FOREVER!

PURDUE ALUMNI STUDENT EXPERIENCE (PASE), by far the largest student organization on campus, can help you prepare for life after college and cultivate a lifelong connection to Purdue. For a one-time membership fee of \$125, you get:

- // A PASE-branded jacket and annual Purdue gear
- // 10% off textbooks and 15% off apparel at Follett's Purdue Bookstores
- // Exclusive benefits from Purdue Federal Credit Union
- // Opportunities to learn, grow, and network with alumni

SIGN UP TODAY, and take your next giant leap toward being a Boilermaker for life!

PURDUEFORLIFE.ORG/PASE



**\$50
BONUS**

ATTENTION BOILERMAKERS!

JOIN PURDUE ALUMNI STUDENT EXPERIENCE AND OPEN A NEW STUDENT CHECKING ACCOUNT WITH PURDUE FEDERAL AND WE'LL DEPOSIT \$50 INTO YOUR ACCOUNT.

PURDUE FEDERAL CREDIT UNION

PURDUE ALUMNI STUDENT EXPERIENCE

Purdue Federal Credit Union disclosure: Membership eligibility required. \$50 bonus offer not available to existing checking account holders. Offer valid on new student checking accounts opened between May 2, 2022, and July 31, 2022, in our branches or online at www.purduefed.com. \$25 minimum opening deposit for student checking accounts. New members must open a primary share savings account with \$5 membership share deposit. Primary share savings currently earns 0.05% annual percentage yield (APY); \$5.01 minimum balance to earn. To qualify for \$50 bonus, student must be a Purdue Alumni Student Experience (PASE) member or have a Purdue Athletics Boarding Pass (while supplies last) and present PASE membership card or Boarding Pass email confirmation in branch or through secure messaging in digital banking no later than August 31, 2022.

Students enjoy social employment options on campus

BY ABBY PLUMBACK
For The Exponent

Many college students are always looking for a way to make extra cash while pursuing academic excellence in school. For some students, finding a job on campus must include engaging in social interactions with other people.

There are a number of different places to choose from at Purdue when looking for a new job. Some of the most popular student employment opportunities include dining courts, residence halls and recreational wellness, all of which involve social interaction.

Hannah Pike, a junior in the College of Engineering, is one of many students employed at the Cordova Recreational Sports Center. Since fall 2021, Pike has

worked as a member services assistant at the Co-Rec, working at the entry desk and operating the equipment check-in center. Pike said she chose her job at the Co-Rec because of the positive environment.

“I really enjoy my job at the Co-Rec. The hours are flexible, and the job isn’t too difficult,” she said. “I like getting to see and interact with a lot of people at work and be a part of such a welcoming environment.”

Pike also noted her salary is reasonable for the work.

“I get paid roughly \$9.50 an hour, which I think is fair,” she said. “I think it is a good pay for what the job requires.”

Another reason Pike said she chose the Co-Rec is its location.

“It is conveniently located near my apartment and

wouldn’t take too much work to get there,” she said.

Ramya Anbarasu, a junior in the College of Health and Human Sciences, works as an admissions ambassador on campus and gives tours. In a regular two hour shift as a tour guide, Anbarasu said she meets four to five families and takes them on a walking tour around campus.

“I try to give them the students’ perspectives and experiences that they can’t get from just looking at the Purdue websites,” Anbarasu said. “We are a major reason why incoming students choose Purdue for their undergrad career.”

Anbarasu also said one of her favorite things about her job is sharing stories with the other tour guides.

“A family once bought my



NATALIE FEDOR | SUMMER REPORTER/

Liz Linne, a junior in the Polytechnic Institute, does leg lifts in the Co-Rec basement.

friend lunch as a thank you, and a married couple who met at Purdue showed me where they got engaged,” she said. “It was the Sinninger Pond next to the bell tower.”

Anbarasu also noted that a job in admissions is competi-

tive.

“Less than half the people who apply get selected each semester, so I would say it’s pretty sought after,” she said. “This spring 2022 semester, over 70 people applied, and only 23 have been selected to

be tour guides in training.”

Both Pike and Anbarasu said they plan to stay in these jobs until they graduate from Purdue.

This article was originally published last spring.



LAUNCH

WHAT'S TO LOVE ABOUT LAUNCH?

- ALL NEW clubhouse, open 24/7
- Rates as low as \$963 for 1B1B
- 15 Minute walk to Purdue
- Pet friendly with 2 dog parks on site, no breed or weight restrictions!
- 4 Resident experiences each month!

Secure your unit today!

leasing@liveatlaunch.com

(765) 743- 4606

www.apartmentswestlafayette.com



Don't miss these events at BGR 2022!

Sponsored by
Purdue University Orientation Programs

BY HANNAH LAPEIRE
PURDUE STUDENT SUCCESS PROGRAMS

The Boiler Gold Rush (BGR) experience includes a thrilling kickoff ceremony followed by sporting events, games, and team building, and learning about Purdue traditions.

The BGR opening ceremony, or BGR Kickoff, is usually held in Elliott Hall but was held this past year in Ross Ade Stadium. The event featured music and games among student volunteers.

Student Orientation committee member Manu Haddad Correa recalls an unbelievable atmosphere.

“It literally looks like concert,” Haddad Correa said. “I love the energy, I feed off of that.”

BGR allows students to fully immerse themselves in the Purdue experience the week before classes begin.

According to Greg Brinster, former BGR team leader and participant, BGR traditions

like the Fountain Run and the Traditions Tour help group members bond and learn about significant campus landmarks.

“The Fountain Run is probably the most fun for freshmen and the anticipation for it is talked about every year,” said Brinster. “It was nice to cool off in the fountains with the other new students after a long day of getting acquainted with Purdue.”

BGR is also a time where first-year

students can learn the layout of campus and understand where landmarks are and why.

“The Traditions Tour is a very big significance for new students because it shows them where everything is and all the landmarks,” Brinster said.

All events at BGR aim to provide first-year Purdue students with a sense of community; events also are designed to be

accessible for all students.

A sensory guide is available to help students with neurodiverse needs navigate BGR.

The sensory guide breaks down the BGR event schedule and labels each event with icons to inform students whether specific events will include groups, physical demands, vision stimulation, or auditory stimulation.

There is also an option for an alternative activity if students are unable to attend for personal reasons. Alternate events include virtual viewings, a separate smaller group event and more.

All BGR events provide first-year Purdue students with a sense of community and finding yourself within a large group.

“BGR kind of fosters the idea of being vulnerable and how vulnerability can help you grow and reach people and become the better version of yourself,” said Haddad Correa. “It helps students from all over the world reach a new sense of belonging and bond over that shared experience.”

The deadline to register is July 31. Register today on your New Student Task List in myPurdue!



Haven't Registered for Boiler Gold Rush Yet? Here's Why You Should.

Sponsored by
Purdue University Orientation Programs

BY MAX DRYER
PURDUE STUDENT SUCCESS PROGRAMS

The most memorable parts of Boiler Gold Rush (BGR) might not be what you expect.

For Student Orientation Committee members Alexia Chacon-Reina and Manu Haddad Correa, BGR is more than what you can see in pictures and videos.

“I’m a very shy person naturally,” says Chacon-Reina. “I knew I wasn’t going to put myself out there on my own. But when I came to BGR, I saw how much fun my team leader was having and how he could talk to anybody about anything; it helped me get out of my comfort zone. I never would have come out of my shell without BGR.”

For Haddad Correa, the relationships built during BGR made the week memorable.

“I found my community because of BGR,” she says. “Throughout the week, I was introduced to Purdue’s international communities and cultural communities. And I love that at BGR, everybody can do



that.” The orientation leaders say BGR 2022 has something in store for everyone. Here are their three top reasons to attend BGR this fall:

The Purdue Confidence and Connections

Beyond arriving to campus a week early, BGR participants get early access

to academic resources, cultural centers, and opportunities to connect with other students throughout the week. These connections lead to success throughout students’ Purdue journeys.

The Energy

In a word, the energy of BGR is unmatched.

“I can still remember walking into Elliott

Hall of Music for the opening ceremonies,” Haddad Correa recalls. “The lights, the energy ... it was unbelievable!”

Chacon-Reina recalls sending a video of the event to her brother on Snapchat.

“He said, ‘It looks like you’re at a concert!’”

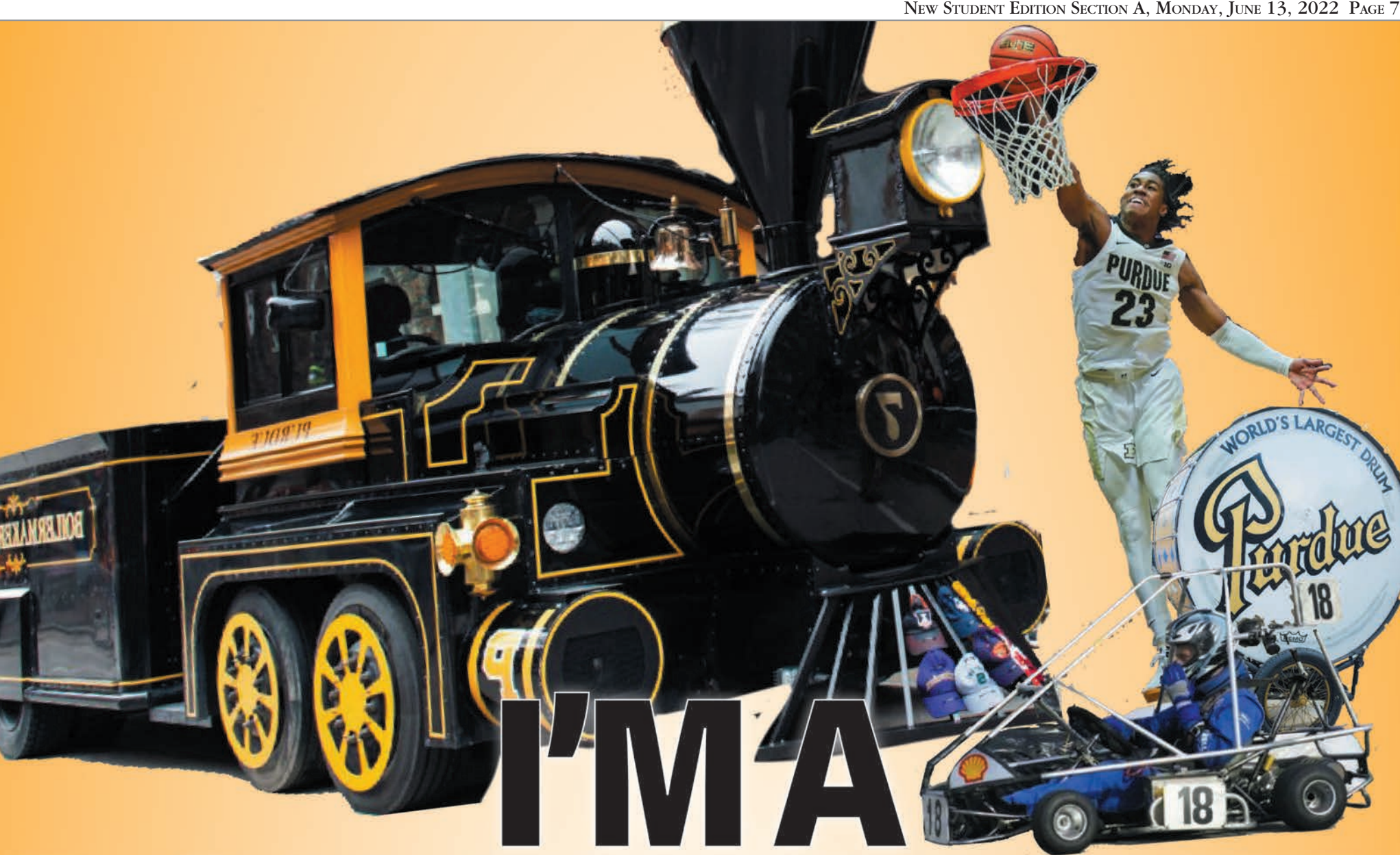
The Affordability

Students can participate in BGR for only \$320, which covers programming and meals for the week. But Purdue also offers fee waivers for those in need of financial assistance. In 2021 alone, Orientation Programs provided over \$170,000 in fee waivers for students to attend BGR at half or no cost.

And the benefits don’t stop there. Every BGR experience is unique and filled with endless possibilities and lifelong memories.

What will yours be?

Sign up for BGR today from your New Student Task List from your myPurdue portal, and learn more about what to expect at www.purdue.edu/orientation. The deadline to register for BGR and apply for a fee waiver is July 31.



I'M A BOILERMAKER



New students, take a selfie with this poster and tag us on social media @purdueexponent

OPEN A NEW STUDENT CHECKING ACCOUNT AND GET A FREE T-SHIRT!¹



WANT \$50 PUT IN YOUR ACCOUNT?²

JOIN **PASE** AND OPEN A NEW **STUDENT CHECKING ACCOUNT** WITH PURDUE FEDERAL, AND WE'LL DEPOSIT **\$50** INTO THE ACCOUNT.

OR

IF YOU PURCHASED AN **ATHLETICS BOARDING PASS** AND OPEN A NEW **STUDENT CHECKING ACCOUNT** WITH PURDUE FEDERAL, WE'LL DEPOSIT **\$50** INTO THE ACCOUNT.



PURDUE ALUMNI
STUDENT EXPERIENCE



VISIT ONE OF OUR CAMPUS BRANCHES:

- › PURDUE MEMORIAL UNION
[ROOM 163 - NEXT TO AMAZON]
- › NORTHWESTERN AVENUE
[WANG HALL - SUITE 1900]

OPEN ACCOUNT HERE! →



PURDUEFED.COM/STUDENTS

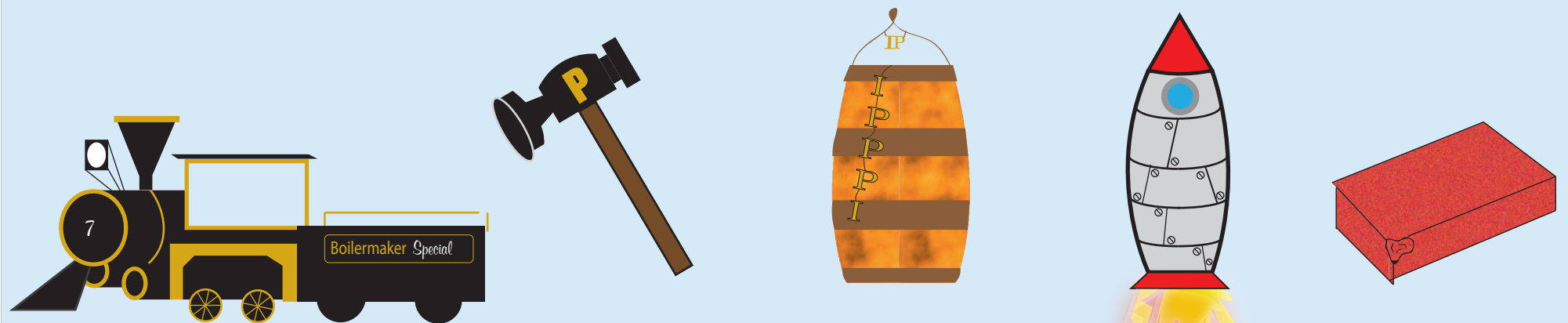


Membership eligibility required. ¹T-shirt offer not available to existing checking account holders. Offer valid on new student checking accounts opened between May 2, 2022 and August 31, 2022 in our branches or online at www.purduefed.com. \$25 minimum opening deposit for student checking accounts. New members must open a primary share savings account with \$5 membership share deposit. Primary share savings currently earns 0.05% Annual Percentage Yield (APY); \$5.01 minimum balance to earn. T-shirt must be picked up at our Purdue Memorial Union or Northwestern Avenue branches only. T-shirt offer valid while supplies last, no guarantee; one t-shirt per student checking account. ²\$50 bonus offer not available to existing checking account holders. Offer valid on new student checking accounts opened between May 2, 2022 and July 31, 2022 in our branches or online at www.purduefed.com. \$25 minimum opening deposit for student checking accounts. New members must open a primary share savings account with \$5 membership share deposit. Primary share savings currently earns 0.05% Annual Percentage Yield (APY); \$5.01 minimum balance to earn. To qualify for \$50 bonus, student must be Purdue Alumni Student Experience (PASE) member or have a Purdue Athletics Boarding Pass (while supplies last) and present PASE membership card or Boarding Pass email confirmation in branch or through secure messaging in digital banking no later than August 31, 2022. Account holder must sign up for a debit card, enroll in digital banking and paperless statements. Max one \$50 bonus per qualifying student. \$50 bonus will be deposited into the student checking account within 10 business days after all conditions have been met. Valid Social Security Number required for account holder to receive \$50 bonus. Bonus is considered interest and will be reported on the IRS Form 1099-INT. Other terms and conditions apply. Cannot be combined with another account opening with monetary bonus offer. The Contactless Symbol and Contactless Indicator are trademarks owned by and used with permission of EMVCo, LLC. Federally insured by NCUA.

Your Purdue journey begins

Can you make it to the end of the year?

Choose a piece!



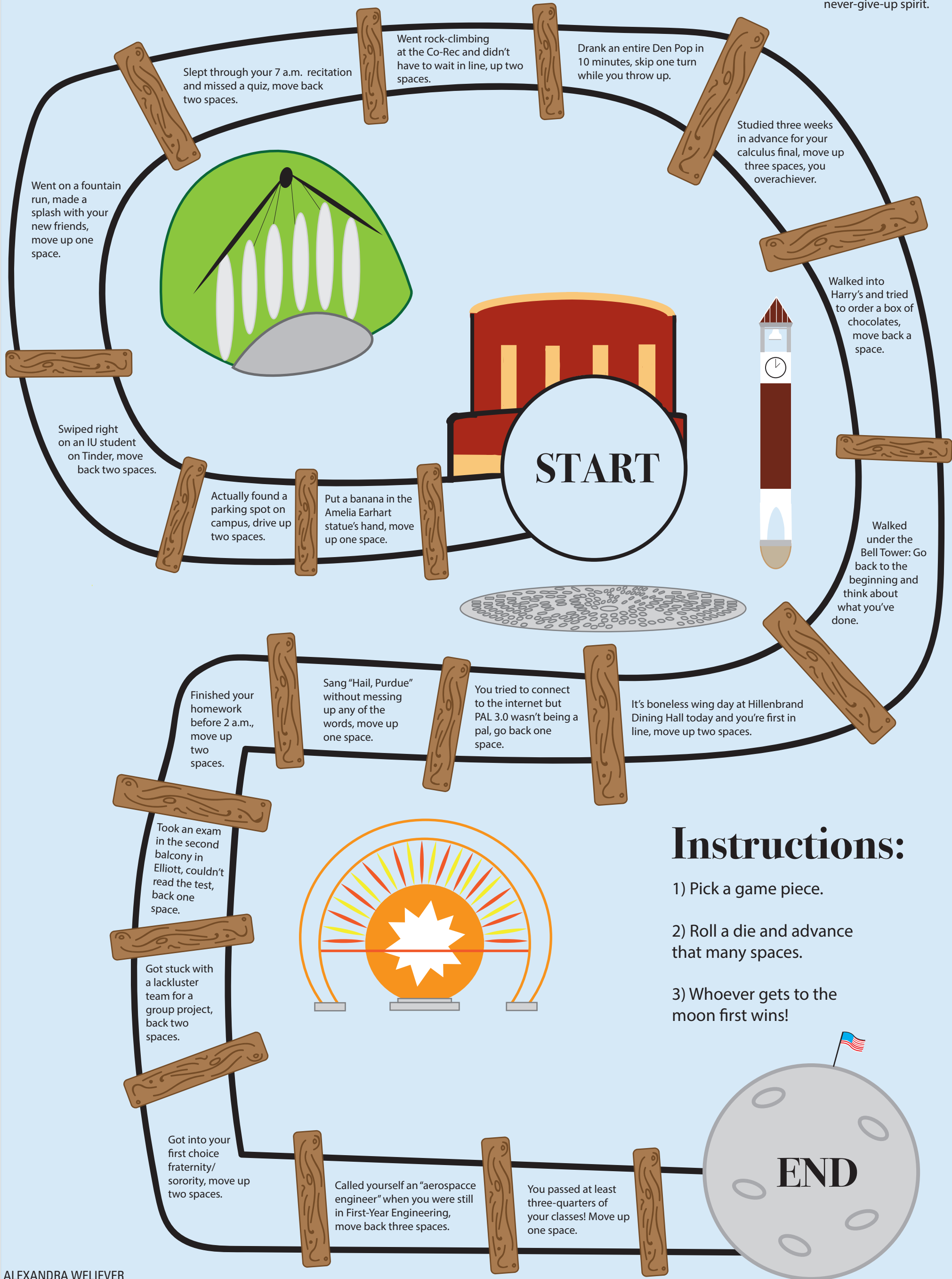
Purdue's official mascot — the Boilermaker Special — will drive you to greatness and help you rock out to "Crazy Train" by Ozzy Osbourne. Be sure never to call it the Boilermaker "Express," or a member of the Reamer Club will emerge from the shadows to correct you.

Purdue Pete's tool of choice, reminding us of our beginnings as the "Burly Boilermakers." As long as you remember that Pete and his hammer are the athletic mascots and the Special is the school's mascot, you're (Old) golden.

Three syllables:
**IU
SUCKS**

Purdue engineers design, build and fly rockets all the time -- just ask any of the 27 Boilermakers who became astronauts. Be ready to inform everyone around you that Neil Armstrong is a Purdue alum, but prepare to face rolled eyes when you remind them... again.

Four days after Heavilon Hall was originally built, it was destroyed in a fire. President James Smart announced that the new building would be "one brick higher." The final structure was actually nine bricks higher — a testimony to Purdue's determined, never-give-up spirit.



Instructions:

- 1) Pick a game piece.
- 2) Roll a die and advance that many spaces.
- 3) Whoever gets to the moon first wins!

COLUMN: Navigating the transition to apartments

BY PHOENIX DIMAGIBA
Staff Reporter

New academic year, new place to live.

In general, students do not often have the exact same room or roommates every year. Changing one or two variables at a time is fairly manageable.

One of the more drastic transitions many eventually face is the switch from a dorm room with University Residences to an off-campus apartment. I made that switch this year.

That is not to say I had a bad experience with the dorms. On the contrary, I probably had one of the best experiences possible. My double dorm room in Honors North was comfortable, with a high ceiling and air conditioning, something I appreciate even more right now.

My roommate was someone I had never met before move-in, but he was a great guy to live with: clean, engaging and a good communicator. It is with this in mind that I compare my previous and current living situations.

I actually did not have plans to move into an apartment after my first year. The primary

reason for my switch from UR to an apartment was an invitation from my friends. Three of them searched for an apartment together touring different places in West Lafayette, and later invited me into that process. Eventually we decided on a four-bedroom, two-bathroom unit near Triple XXX. The commute to campus is very manageable, around five minutes to the Union on foot, depending on the crosswalks. The slope of State Street does make the morning uphill hike harder than the afternoon/evening downhill walk, and the increased distance from the Cordova Recreational Sports Center makes my usual exercise of swimming laps more difficult, but I enjoy the proximity to the Chauncey restaurants compared to my old location in Honors North.

The most immediately obvious difference for me is food. Transitioning from a meal plan to cooking for myself takes some forethought. Do I save money by not being on a meal plan? Sure. Is there more variety in my diet? Yep. Am I eating healthier? Well, when I try hard enough. As someone who loves to eat, I enjoy hav-



ing that control. The closer proximity to restaurants in Chauncey helps.

However, apartment cooking is much less convenient. Preparing food takes time, time that is not required when grabbing food from a dining hall. Campus

accessibility is also a factor. Eating on campus now requires me to pack a lunch instead of running over to Wiley for a bite.

Another factor to consider is the bathroom. Though some dorms have room or suite specific bathrooms, many have

shared community bathrooms. I remember doing my hair in the morning standing next to another guy, walking into the closest bathroom, finding that all of the shower stalls were taken, and heading back to my room in a towel carrying my shower caddy.

None of these situations happen now, even though I share a bathroom with one of my roommates. On the other hand, the cleaning staff has downsized to two people: me and my roommate. I now have the necessary job of wiping the counter, scrubbing the shower, cleaning the toilet and other tasks required to maintain the bathroom of two college men.

Underrated but important is the lack of oversight from UR. I liked my RA and thought he did a great job, but not everyone has had such a positive experience. The ability to stay up late in my own bedroom or chill with my roommates at odd hours of the morning without worrying about waking someone up is pretty nice. I enjoy that agency.

On the other hand, I am much more responsible for things like conflict remedia-

tion or physical damage to the apartment. I think my roommates are great and we get along well, but if that was not the case, it would be hard to find someone to resolve a disagreement besides building staff or law enforcement. But if I had a disagreement with my roommate in the dorms, it could be handled through the university before it goes to the police.

Utilities are one more thing to think about. At my apartment, utilities like electricity are a monthly fee separate from the rent, a cost that's included in the total cost of a dorm. This means I am more likely to turn my bedroom lights off when I leave for the day than I was last year. Mercifully, internet is included with my apartment, but choosing an internet service provider is something some people have to deal with.

As with most things, there are pros and cons when making the dorm-to-apartment move, but I'm glad I did it. I'm looking forward to a good year.

This column was originally published last fall.

Invest in local journalism

Pulitzer-prize winning investigative journalists. Advertising executives and CEOs. Oscar nominees and Emmy-Award winning creators. Peabody Award winners. These are just a few of the titles that can be claimed by alumni of The Exponent.

The tradition and importance of this local journalism incubator is more important than ever.

The Exponent, published by The Purdue Student Publishing Foundation, is a 501(c)3 educational not-for-profit media company that is independent of the University, and primarily run by students.

Your gift of any amount to the Purdue Student Publishing Foundation will be used to support operational expenses and student staff as they continue to keep the more than 130-year tradition of The Exponent alive.

THE EXPONENT

Text MyExponent to 44-321 to make a donation or visit <https://secure.givelively.org/donate/purdue-student-publishing-foundation>
Or, mail your donation to: Purdue Student Publishing Foundation,
P.O. Box 2506, West Lafayette, IN 47996-2506.

Please include your name, address, telephone number, and email address with your donation. Thank you!

EXCLUSIVE EDUCATION OFFERS



GEAR UP TO DO IT ALL EDUCATION OFFER

RECEIVE A \$100 E-GIFT CARD FOR PURCHASES \$799+*

OR

RECEIVE A \$200 E-GIFT CARD FOR PURCHASES \$1,399+*

Shop at Dell.com/Purdue

Have questions? Contact Kyle_Amos@Dell.com



XPS 13



INSPIRON 16 5000

SCAN TO SHOP



Offer valid 1/29/2022-1/28/2023 AT 11:59 PM CST or until 10,000 redemptions whichever occurs first. Dell Promo eGift Card-Arrives in 10-20 days, carries a 90 Day Exp. Terms at Dell.com/giftcard *TERMS AND CONDITIONS: Verification of student status is required by using a valid .edu email address. Offers subject to change, not combinable with all other offers. Taxes, shipping and other fees apply. Offers available only to qualified U.S. customers, and subject to restrictions in your applicable contract, if any. Offer not valid for Resellers. Dell reserves right to cancel orders arising from pricing or other errors. Dell Promo eGift card will arrive via email within 20 days from ship date. Expires in 90 days (except where prohibited by law). Not valid for resellers. See dell.com/giftcard/promoterms. Dell only accepts returns of the entire bundle. Not valid for resellers and/or online auctions. Dell reserves the right to cancel orders arising from pricing or other errors. Hard Drive capacity varies with preloaded material and will be less. System memory may be used to support graphics, depending on system memory size and other factors. Copyright © 2022 Dell Inc. or its subsidiaries. All Rights Reserved. Dell Technologies, Dell, EMC, Dell EMC and other trademarks are trademarks of Dell Inc. or its subsidiaries. Other trademarks may be trademarks of their respective owners. 547825

What you need to know when apartment hunting

BY RAY COUTURE
Summer Reporter

Off-campus apartment living may seem like a far-off venture for you at this point, new student, as you prepare to start your collegiate career as a Boilermaker in a pent-up dorm room in Griffin North or Hil-lenbrand Hall or one of the many other dormitories littered through-out campus.

But, sometime in the very near future, you may decide that living in the dorms isn't all that it's cracked up to be: the shrieking at all hours, hearing people sprint past your room at 3 a.m., sharing a communal bathroom and shower with 32 other people — staples of dormitory living — are all things you can avoid when finding your own apartment. This guide will help you with what you'll need to know.

There are more resources available to you than you'll probably need. Purdue's off-campus housing department publishes a comprehensive housing and living guide every year that highlights a bevy of information on what to do and what to know regarding leases, parking and trash enforcement, code violations and inspection protocols.

On top of that, the department's website includes even more information: an FAQ page, apartment condition and comparison checklists, links to local furniture stores and utility services, suggested questions for landlords and a sample roommate agreement. Additionally, you can look for apartments (and room-mates) directly through the website's housing and roommate portals. The apartment portal shows the location of each apartment complex, as well as the unit types and price range of the occupancies.

The Exponent also publishes a housing guide — available around the area and under the special sections tab at purdueexponent.org — which includes basic tips and information from local landlords and others.

Ashley Darnell, Purdue's assistant director for off-campus student services, provided helpful information regarding the step-by-step process of renting, as well as some tips.

Search for places that meet your specific criteria/preference (location, size, price range).

Identify places who treat tenants

well and have good reviews online.

Contact landlords to see the apart-ment. Some property managers are doing this virtually now.

Fill out an application to rent the

worried about getting to class or a school event on time.

Apartment reviews/view-ings

Once you've got your general loca-

laundromat.

Whether you opt for a virtual tour or one in person, make sure the apartment you're viewing is the one you'd be signing a lease to live in. If

you and your landlord.

Darnell recommends that you read through the lease thoroughly before signing and to remember that the decision to sign is yours.

"Students should never feel pres-sured to sign a lease," Darnell said. "If a landlord is treating them poorly before signing, it may say something about the way they will be treated as tenants."

The website includes a page on leasing information and things to know when signing.

"If a student has questions about a lease, they should ask the land-lord before signing the lease, or contact our office for more infor-mation," the site says. "Tenants may be held jointly and severally responsible for the terms of the lease. This means that a tenant and any roommate(s) are jointly re-sponsible for any charges, rent, or damage to an apartment."

Make sure to keep a copy of your lease so you can refer to it in any possible disputes with a landlord or roommate.

Maintenance

After you've signed your lease and moved into the new pad, keep an eye on your lights and applianc-es and make sure they're continu-ing to work properly. If a light goes out or your dishwasher goes on the fritz, you'll have to alert your apart-ment's maintenance team.

It's better to put these requests in sooner rather than later, as mainte-nance crews can get swamped with work and delay your service. If you wait too long or don't report it, you might lose a fraction (or more) of your security deposit.

"Two of the biggest issues we hear about from students are mainte-nance issues and security deposit is-sues," Darnell said.

Dealing with maintenance delays was a considerable issue for Tobin.

My power will just randomly go out for like hours at a time," Tobin said. "Oh, my fridge broke, and it took them a month to replace it.

"Instead of, like, just replacing it right away, they moved it into the liv-ing room and plugged it back in and left it for a month until I called like 30 times. I was like, Please give me a new fridge."

This article was originally published last summer.



TEIKO JACKSON | GRAPHIC ARTIST

apartment once you've chosen one.

Review all relevant documentation and sign the lease.

Using Darnell's tips as a guideline, let's break down each step.

Location

It's important that you consider your access to campus when looking for a place.

Living across the river in Lafay-ette, far away from the hustle and bustle of campus, may sound nice, but if you don't have a car you'll be relying on either your walking shoes or the reliably unreliable public transportation system. When winter hits and it's 24 degrees out with a wind chill that makes it feel like -2, you're not going to want to wait around for a bus that's running 10 minutes behind, and you're definitely not going to want to make the 40-minute trek across the ice-laden pedestrian bridge (you will slip, you will fall, and the bridge pigeons will distress-coo at you) and up the hill to get to campus.

There are apartment complexes in the West Lafayette area that are a comfortable and convenient distance away from campus, and you should consider those if you're

tion figured out, the next step is mak-ing sure your prospective apartment has good reviews from past tenants. The off-campus housing website has a "landlord survey page" where you can see Purdue student ratings of different places based on a variety of categories like safety, noise, apart-ment conditions and maintenance.

Keep in mind when you're comb-ing through reviews that not every-one's experience will be the same as yours. If you're interested in a place, you should set up a tour and see it for yourself.

Apartment viewings are the time for you to see the place you might be inhabiting for the next few years. Remember that it's OK to shop around; you don't have to say "yes" to the first apartment you're shown.

The website has an "apartment comparison checklist" you can use to tabulate things like room layouts and sizes, parking situations, conditions of light sources and faucets and what kind of laundry facilities are provided. Living off campus means you don't have access to dorm laun-dry rooms, so either make sure your apartment includes a washer and dryer or you're going to need to find a

not, you might not end up with what you expected.

Kelsey Tobin, a graduate student in the department of Forestry and Natural Resources, was new to the Lafayette area when she began her apartment hunt. She toured a "model" version of an apartment she was interested in, only to find out when she moved into the real place that it was nothing like ad-vertised.

"The model that I toured at (her complex) is like, literally, not even recognizable compared to the apart-ment I live in," Tobin said.

"I saw the model that was, like, a two-bedroom, super nice remodel," Tobin said. "And then on the day I moved in and I walked into my apartment with my mom, my mom started crying. She was like, 'This is nothing like what I thought.'"

Tobin's advice? "Ask more ques-tions about different styles of units."

The lease

The last step in your apartment quest, after you've found a place in a suitable location that meets your budget and matches your style, is signing the lease. The lease is your legally binding contract between

STAR FURNITURE

Quality furniture on a college budget.

StarFurnitureIndiana.com
3812 Fortune Dr, Lafayette, IN

Welcome to Campus, Boilermakers!

We'll help you "focus" on a successful Purdue semester!

Come see us for all your vision needs.

EVANS, PIGGOTT, & FINNEY

Located in the Purdue Memorial Union
CALL TODAY FOR AN APPOINTMENT
765-743-6137
evansandpiggottteyecare.com

Is BGR worth the hype?

Two seniors reflect on their Boiler Gold Rush experiences

BY NATALIE FEDOR AND CHARLIE WU
Exponent Journalists

Give it a shot

When I started my freshman year at Purdue in 2018, I knew very few people. I was the only one from my high school coming here. Out of my home state and worried about making friends, I decided to participate in Boiler Gold Rush.

Are the people who were in my BGR group my best friends now? No. But we have kept in touch. But becoming best friends with the random people you're grouped with really wasn't the point, because at the end of the week, my experiences at BGR got me out of my comfort zone, and helped me make some of my first friendships on campus. Those may change, but I would still do it all over again, and I recommend all freshmen give it a fair chance.

Yes, I know you may think some of the events are cheesy — they definitely are. But focus on talking to people around you, familiarizing yourself with this big, beautiful campus, and making the best of it. Go to the events! You paid for them, and you'll get the most out of the experience if you go through it properly.

During my BGR, there were about 15 people in my group. There were a couple who dropped off throughout the time, but for the most part my group stayed together. I'm glad we did, because those people became like a family for a week. We went everywhere together, met up and sat together at meals, walked around and got Den Pops at the Discount Den together, you name it, most of us did it.

Part of it is luck of the draw, I'll be honest. If you get a bad Team Leader who isn't excited about introducing you to campus or everyone in your group isn't very social, you may not have a great experience like the one I had, but I do want to tell you that you should try and enjoy the extra time on campus before you have to start worrying about things like classes. If your group is bad, make friends in other groups and honestly just tag along with them and try out the fun things they have planned for you. There are some super valuable events too like the Be Involved fair where you can see all the different organizations on campus and figure out if you want to join any of them (The Exponent will have a booth there too if you want to talk to us!).



DAVID HICKEY | SENIOR PHOTOGRAPHER

Stretching nearly two blocks, a line for Discount Den formed as BGR groups tried to introduce freshmen to the Den Pop while dealing with weather reaching the high 80s.

Some of the events definitely won't be that fun, but you can at least bond with the other new students you're paired with. I think back to my BGR year, and in 2018 the week was supposed to end with a big comedy magic show. Well the comedian, and you can read all about it on our website, Andy Gross, had nearly every one of us walk out on him mid-performance after he made some overtly sexual gestures and remarks with young female students on stage. My group had some girls who were very impacted by the performance, so after we all went as a group and sat in the grass outside Elliott Hall and talked about how what we just saw made us feel. It was like a traumatic bonding experience but it was so cool that these people I didn't know a week ago were sharing these feelings together. There were other groups doing the same thing. Hopefully your BGR doesn't include a

traumatic sexual comedy magic show, but the point is, your experience is going to be what you make it. If you write it off as cheesy in the first day and give up and stay in your dorm, you may not have the chance to make some special friendships.

It's like that old, cliché saying: you never know until you try. That's what I experienced with BGR. The people I met that week, though we never became best friends, were still friendly faces to see and wave to while walking around campus. They made this place feel a little less huge. Give it a shot.

BGR is fine — if you're lucky

When they say the people you meet at BGR will be your friends for life, it's true — but only if you're lucky.

I had a pretty mediocre BGR experience where despite the TL's best efforts, nobody would really talk, including myself. I was

just a lazy freshman who thought the common bond dance was pointless and had better things to do than run through a fountain. By the end of the third day, most of my team had went their own way and I decided to follow suit.

If you're unlucky enough to be in a group that's fallen apart by Day Two, it's not the end of the road! You can still make friends. Half of the friends I made freshman year came from just hanging out in the lobby of Earhart Hall, and the other half came from joining the Purdue Fighting Games Club. The trick is to make an active effort — you can't just sit in your room and expect friends to fall from the sky. Meet people on your floor, go to club callouts and attend class, and your social life will be just fine.

This article was originally published last fall.

**MULTIPLE
TRIPS DAILY
FROM PURDUE
UNIVERSITY TO
O'HARE AIRPORT**



**BOOK YOUR TRIP TODAY!
(765) 743-3120
EXPRESSAIRCOACH.COM**



PURDUE PICKUP LOCATIONS

**• PURDUE WEST
• FORD DINING COURT
• STEWART CENTER**



Summer Sundays @ ULu

Bible Study
9:15am

Worship
10:30am Organ Service

Office Hours
12noon - 4pm, M-F

The ULu building is across
the street from Electrical
Engineering.



460 Northwestern Ave.
For more information
visit www.ulupurdue.org

A Heart for Students in the Heart of Campus

CRYPTOQUIP 1

UTHQZGUR VLULH ZR NAZGA UYY LAH
EHWEYH YWMH LW NULGA U MUYHQZH
AUQEHQ VZLGWT: QAWPU ZVYURP.

Today's Cryptoquip Clue: E equals P

CRYPTOQUIP 2

ODYM Q FDPZY CP HCCYGXC CP XEZD
GW OHW CDKPEAD CDHC DEAY FKPOV,
Q GHVY CDY CDKPMA VYFQZQPM.

Today's Cryptoquip Clue: F equals C

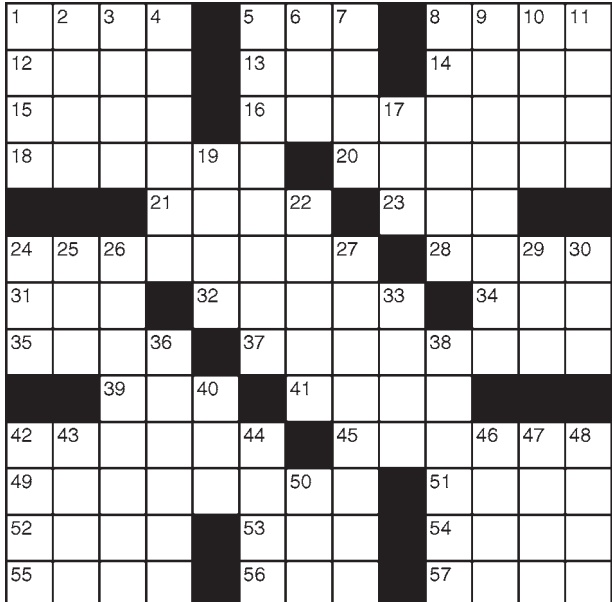
CRYPTOQUIP 3

Z IZLKF JDABK TJHRGW DI NZLKBOW
ZWWKJFKF CKYWKQFZC'Y ABZNT-WHK
ZIIZHQ. WGK RZBZ GZF RZBZGZF.

Today's Cryptoquip Clue: F equals D

The Cryptoquip is a substitution cipher in which one letter stands for another. If you think that X equals O, it will equal O throughout the puzzle. Single letters, short words and words using an apostrophe give you clues to locating vowels. Solution is by trial and error. © 2022 by King Features Syndicate, Inc.

CROSSWORD 1



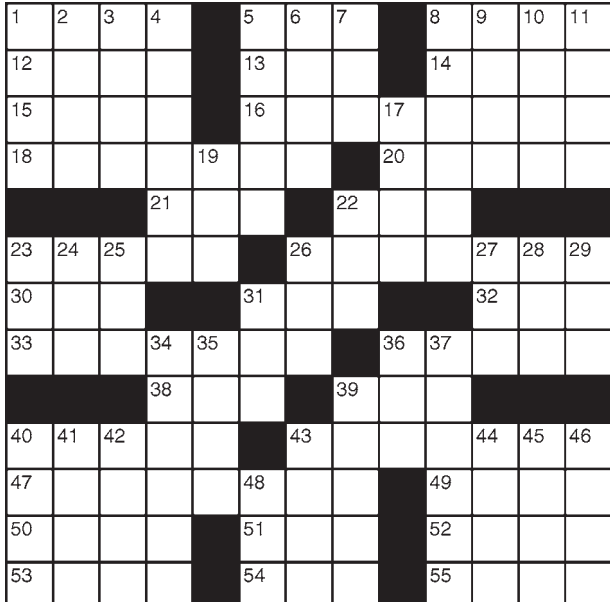
ACROSS

- Imperfection
- Distant
- Mule, for one
- Theater section
- "Evil Woman" band
- Albacore, e.g.
- British noble
- Certain elections
- Italy's — Coast
- "Oklahoma!" carriage
- Arm bone
- Ottoman ruler
- Center
- "I'm a klutz!"
- Verb for you
- Makeup mogul Lauder
- Dime portrait
- Invitation notation
- Torso areas
- 401(k) alternative
- Bridge coup
- Deli meat
- Diamond stats
- Birthing experts
- Lamb alias
- Japanese noodle
- Ninny
- "Shake —!" ("Hurry!")
- Labels
- Prefix with natal
- Surfer's concern

DOWN

- Dog bane
- Clay-rich soil
- Taj Mahal city
- Become teary
- Friedan's cause
- "The Greatest"
- Scepters
- Sound system
- Leave in haste
- "My treat"
- Relaxed
- Vat
- Drifting ice
- Those opposed
- Scratch the surface
- Apr. addressee
- Marine, informally
- Football coach on Apple TV+
- Adobe file format
- Many coll. applicants
- Part of Q.E.D.
- Shrimps' kin
- "What an exhausting day!"
- Paris pal
- Blue material?
- Opera set in Egypt
- Infamous tsar
- "That's — ask"
- Even
- Wise one
- Jargon suffix

CROSSWORD 2



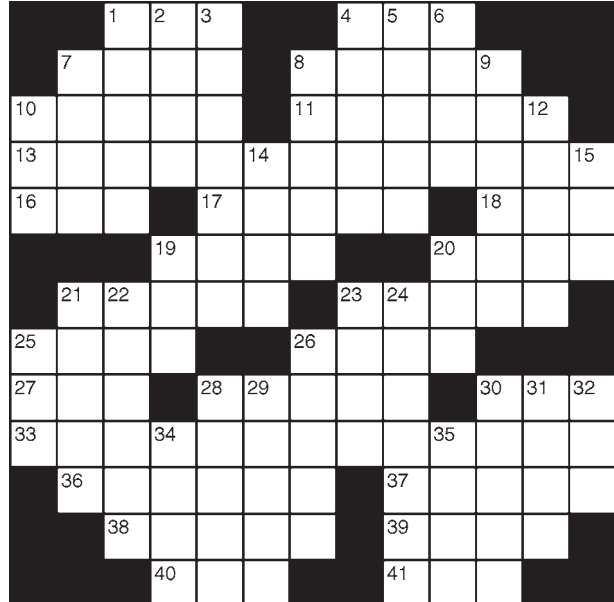
ACROSS

- Begged
- Rx overseer
- Exile isle
- Days gone by
- Bit of physics
- Profound
- Historic Parks
- Interlaces
- Tourney hopeful
- Make amends
- Prefix for "night" or "morning"
- Brazilian city
- "Bolero" composer
- Beseech
- Literary collection
- Overhead trains
- Bro or sis
- Tempted
- Ghana's capital
- Sturdy tree
- Roswell sighting
- Praises
- City in Uganda
- Deserving
- Aussie hoppers
- impasse
- Pub pint
- Point
- Sneaky laughs
- Neighbor of Leb.
- Online crafts site

DOWN

- Burning heap
- Lake bird
- Formerly, once
- "Heavens!"
- Enthusiast
- Word of warning
- Busy insect
- Newspaper chief
- Comic Jay
- Existed
- Church area
- Sit tight
- Be sick
- Hosp. workers
- Singer Carly — Jepsen
- New England cape
- Cistern
- Days of yore
- Computer key
- Melody
- TV schedule abbr.
- "A spider!"
- Topical antiseptic
- Group of actors
- Sternward
- Strong-arm
- Hypnotized
- Sister of Rachel
- Pot starter
- Nevada neighbor
- Slithery
- Boxing match
- Employer
- Catch sight of
- Scale notes

CROSSWORD 3



ACROSS

- Plead
- Belfry critter
- Suitor
- Comforter cover
- Italian wine
- Steamy
- Deep sources of water
- Director Craven
- Varieties
- Pitch
- D.C. VIPs
- Seized wheels
- Crossword diagrams
- Taters
- Estate beneficiary
- Plane reservation
- Bank acct. entry
- Kick out
- Justice Dept. agency
- Cheesy pasta dish
- Like ocean water
- Ire
- Cheery tunes
- \$ dispensers
- Architect I. M.
- "— -haw!" (cowgirl cry)

DOWN

- Outscores
- Roof edge
- Surmised
- Overcooked
- Acknowledges
- Head, to Henri
- Drill
- Sweeties
- Inclined
- Cutting tool
- Applauds
- Charged bits
- "No seats"
- Army address
- Trench
- Chaps
- Ceremony
- Brief moments
- Well-worn trail
- That fellow's
- Factions
- Submit taxes online
- Starbucks size
- Sweetie
- Diner orders
- "Kinda" suffix
- Coin toss
- Deco artist

Deadline is 2 p.m. the working day before publication.
Office hours are 8:30 a.m. – 5 p.m. Monday – Friday.
Prepayment is required. Call or email 765-743-1111 ext. 100,
or visit www.purdueexponent.org/advertising/

CLASSIFIED ADS ARE SOLD IN BLOCKS OF WORDS.

1-10 words \$5.50 Discounts available for repeat ads.
11-20 words \$11.00 For ads with more words & full
21-30 words \$16.50 pricing list visit purdueexponent.org
31-40 words \$22.00 and click on advertising.

Add a 1"x1" logo or picture for \$15
All classifieds are published online.
Classified ads are non-refundable.

Free Student Classifieds

Purdue students may place free classified ads up to 15 words.
Additional words after that are \$.30 per word first day,
\$.25 per word repeat. Excludes employment.
Students may not place an ad for other students or businesses.

TRIVIA 1

Presidents

©2022 PuzzleJunction.com

- Which president was related to 11 other presidents?
(a) Franklin D. Roosevelt (b) William McKinley (c) Woodrow Wilson
- What president appointed the most Supreme Court justices?
(a) Herbert Hoover (b) William Taft (c) George Washington
- What president had a dog named Veto?
(a) Benjamin Harrison (b) James Garfield (c) Martin Van Buren
- The first White House cats were pets of which president?
(a) Ulysses S. Grant (b) Thomas Jefferson (c) Abraham Lincoln
- Who was the first president to host a pope at the White House?
(a) Jimmy Carter (b) John F. Kennedy (c) Ronald Reagan
- What president dispatched a cruiser to bring Charles Lindbergh home after his epic flight?
(a) Warren Harding (b) Calvin Coolidge (c) Herbert Hoover
- Who was the last president to sport facial hair while in office?
(a) Theodore Roosevelt (b) Ulysses S. Grant (c) William Taft
- Who was president during all the U.S. moon landings?
(a) Richard Nixon (b) Lyndon Johnson (c) Gerald Ford
- What president signed the Equal Pay Act into law?
(a) Jimmy Carter (b) Bill Clinton (c) John F. Kennedy
- What president established the CIA?
(a) Dwight D. Eisenhower (b) Harry Truman (c) Grover Cleveland

TRIVIA 2

Random Trivia

©2022 PuzzleJunction.com

- Obon is a Japanese festival celebrating what?
(a) Children (b) Emperors (c) Ancestors
- What country has an oak tree that was once named a Temple of Reason?
(a) Germany (b) France (c) Slovenia
- Where are the oldest petroglyphs in the U.S.
(a) Nevada (b) New Mexico (c) Texas
- What is sometimes added to coffee in Indonesia?
(a) Egg yolks (b) Charcoal (c) Black pepper
- How many languages are written from right to left?
(a) 17 (b) 8 (c) 12
- What was the first weekly news magazine published in the U.S.?
(a) Time (b) News Week (c) The News in Review
- What was the first message sent between computers?
(a) Sign in (b) Howdy (c) Lo
- Which country has the most national parks?
(a) U.S. (b) Australia (c) Canada
- The lead guitarist of which band has a Ph.D in Astrophysics?
(a) Queen (b) Aerosmith (c) Motley Crue
- What was the name of the first computer search engine?
(a) Ask Jeeves (b) Infoseek (c) Archie

TRIVIA 3

History

©2022 PuzzleJunction.com

- What country invaded Abyssinia in 1935?
(a) Italy (b) Japan (c) France
- Which dynasty established the first unified Chinese empire?
(a) Han (b) Zhou (c) Qin
- What year did Henry Hudson sail into the river that now bears his name?
(a) 1635 (b) 1609 (c) 1657
- What was Queen Victoria's birth name?
(a) Alexandrina Victoria Hanover (b) Charlotte Victoria Stuart (c) Victoria Elizabeth Romanov
- Automotive inventor Ralph Teetor created what in 1948?
(a) Airbags (b) Cruise control (c) Seat belts
- In what year was the Taj Mahal completed?
(a) 1711 (b) 1596 (c) 1653
- What state was the site of the most Civil War battles?
(a) Virginia (b) Pennsylvania (c) Tennessee
- The Cold War is generally considered to span the time between 1947 and what year?
(a) 1984 (b) 1998 (c) 1991
- Who was the top-earning buccaneer of the golden age of piracy?
(a) Henry Morgan (b) Samuel Bellamy (c) Black Bart Roberts
- The medieval period is thought to begin with what event?
(a) The fall of Rome (b) The death of Jesus (c) The crowning of Napoleon

WORD SEARCH 1

Presidential Runners-Up

V T R R T N O T N I L C V N Z T A X
Y R M E O A D Y W I L K I E X K B U
E E I C T O V E T W E X R B E U S X
E T N A G A S W O D O P M R W G C S
O R I M J O W E H N B U R L S Q E W
H A J Y O T V D V A R Y W D O H Q B
N C X S L R W E L E A I I X G U G S
R I M Y F L Y S R O L S T U R I O A
N W A F V A L C T N G T H I D F G S
N E B C L L Z R P E B F A M Y N L I
B N D C C L C E Y U V L M P O C K K
N I A L W M G D S N J E O D R R C A
G N D Y I I Y H P V P P N K I G O K
Z M P E R T G L F G E A D S B G C U
J M D L N B I O O X L E A U O J N D
G H F O Q R P N R D E N L Z Z N A M
M N E G L Z J Q D E Z Y E N Y Z H K
N P G R E E L E Y H U M P H R E Y V

Copyright ©2022 PuzzleJunction.com

BIDEN
BRYAN
BUSH
CARTER
CLAY
CLINTON
DEWEY
DOLE
DUKAKIS

FORD
GOLDWATER
GORE
GREELEY
HANCOCK
HUGHES
HUMPHREY
KERRY
LANDON

MCCAIN
MCGOVERN
MONDALE
NIXON
ROMNEY
ROOSEVELT
STEVENSON
TILDEN
WILKIE

WORD SEARCH 2

Service Organizations

S C Y M R A N O I T A V L A S T M B
W N O I S I V D L R O W H S J Z Y N
O D R O I R R A W D E D N U O W Y T
L Q O F Y J E R E C P C N P V M T J
L D D A M I A N H T V I U V C I E C
E S E T M K U Y I G O C X A O F I N
F E M N M R E D C R O S S A A C C X
D M O O U O H E L E H D G T B S O P
D I S Z H B O E H S E S W R Q L S O
O D T Q G F A S E F Y S X D U A E H
S F S F Y G S R E A U U F T L E N S
I O I A U R T K W S N O S A M S A I
N H M E T O A D L S V B R K N R M W
A C I L M R E T B E A L W O D E U A
W R T A E T D X O W P J I X U T H E
I A P D I R E C T R E L I E F S X K
K M O N Q T G O O D W I L L D A Y A
R O U N D T A B L E M Z V K F E X M

Copyright ©2022 PuzzleJunction.com

DIRECT RELIEF
EASTER SEALS
ELKS
GOODWILL
HUMANE SOCIETY
JAYCEES
JUNIOR LEAGUE
KIWANIS
LIONS

MADD
MAKE A WISH
MARCH OF DIMES
MASONS
MOOSE
ODD FELLOWS
OPTIMISTS
RED CROSS
ROTARY

ROUND TABLE
SALVATION ARMY
SERTOMA
SHRINERS
UNITED WAY
WORLD VISION
WOUNDED WARRIOR
YMCA
ZONTA

WORD SEARCH 3

Famous Lefties

C H L H T Y J T R V V D Z T T I O Y
H D X P P G X K V H F K T R K G R P
U L F R E E M A N A D N A L R A G K
R E J V Q Q S W X Y N Z Q G G C N Y
C F S Q N K Q I E N O D Q I I E I S
H N D R C U N N U M A N Y E Y U L A
I I R Z W U T T D R H C K K C D P G
L E R S M R R R O W C G B U E R A A
L S T D A F E U N O K O R N S E H D
X D P C U Y E G B B F I A O T L C R
I F C I F Y V G T E E N Q R I L M A
R M F U T E E Z R T S L E G N E T S
D G S Q Z Z S G R O E N I N G K Z E
N S M P D N Q U R E D M A S C J R A
E J B Y I L L B H J H G I Z X E K C
H W L W E T O K R F J M Y N V X A F
V A S N U L T O S S A C I P E H K W
N O O M C E N R O E A V P H F M B R

Copyright ©2022 PuzzleJunction.com

BROSAN
CAESAR
CHAPLIN
CHURCHILL
CRUISE
CURIE
DREYFUS
DYLAN
EMINEM

FREEMAN
GARLAND
GROENING
HENDRIX
KELLER
LENO
MCCARTNEY
MCENROE
MOZART

PICASSO
PITT
REEVES
SEINFELD
SPITZ
STENGEL
STING
TEBOW
VAN DYKE

SUDOKU 1

Conceptis Sudoku

By Dave Green

		1	9	2	4	6		
	4			5				
2					8			7
4				6	5		9	
5	8					1	6	
1		3	2					4
9			7					1
				8			5	
		7	5	3	1	4		

Difficulty Level ★

6/13

Sudoku is a number-placing puzzle based on a 9x9 grid with several given numbers. The object is to place the numbers 1 to 9 in the empty squares so that each row, each column and each 3x3 box contains the same number only once. The difficulty level of the Conceptis Sudoku is indicated with stars one star being the easiest.

SUDOKU 2

Conceptis Sudoku

By Dave Green

				5				3
							2	
1		3	6	8	9	4		
7		5			4			
3								6
			9			8		4
		7	8	3	2	5		9
	5							
6			4					

Difficulty Level ★★

6/14

Sudoku is a number-placing puzzle based on a 9x9 grid with several given numbers. The object is to place the numbers 1 to 9 in the empty squares so that each row, each column and each 3x3 box contains the same number only once. The difficulty level of the Conceptis Sudoku is indicated with stars one star being the easiest.

SUDOKU 3

Conceptis Sudoku

By Dave Green

		3	7	6	9	1	8	
	8							5
	7			5	4			9
	2		6			7		1
	3			8		9		4
	9					8		6
		2	3	1	5			8
								7
					6	5	4	

Difficulty Level ★★★

6/15

Sudoku is a number-placing puzzle based on a 9x9 grid with several given numbers. The object is to place the numbers 1 to 9 in the empty squares so that each row, each column and each 3x3 box contains the same number only once. The difficulty level of the Conceptis Sudoku is indicated with stars one star being the easiest.

Answers for Today's Puzzles

WORDSEARCH 1

V T R R T N O T N I L C V N Z T A X
Y R M E O A D Y W I L K I E X K B U
E E I C T O V E T W E X R B E U S X
E T N A G A S W O D O P M R W G C S
O R I M J O W E H N B U R L S Q E W
H A J Y O T V D V A R Y W D O H Q B
N C X S L R W E L E A I I X G U G S
R I M Y F L Y S R O L S T U R I O A
N W A F V A L C T N G T H I D F G S
N E B C L L Z R P E B F A M Y N L I
B N D C C L C E Y U V L M P O C K K
N I A L W M G D S N J E O D R R C A
G N D Y I I Y H P V P P N K I G O K
Z M P E R T G L F G E A D S B G C U
J M D L N B I O O X L E A U O J N D
G H F O Q R P N R D E N L Z Z N A M
M N E G L Z J Q D E Z Y E N Y Z H K
N P G R E E L E Y H U M P H R E Y V

WORDSEARCH 2

S C Y M R A N O I T A V L A S T M B
W N O I S I V D L R O W H S J Z Y N
O D R O I R R A W D E D N U O W Y T
L Q O F Y J E R E C P C N P V M T J
L D D A M I A N H T V I U V C I E C
E S E T M K U Y I G O C X A O F I N
F E M N M R E D C R O S S A A C C X
D M O O U O H E L E H D G T B S O P
D I S Z H B O E H S E S W R Q L S O
O D T Q G F A S E F Y S X D U A E H
S F S F Y G S R E A U U F T L E N S
I O I A U R T K W S N O S A M S A I
N H M E T O A D L S V B R K N R M W
A C I L M R E T B E A L W O D E U A
W R T A E T D X O W P J I X U T H E
I A P D I R E C T R E L I E F S X K
K M O N Q T G O O D W I L L D A Y A
R O U N D T A B L E M Z V K F E X M

WORDSEARCH 3

C H L H T Y J T R V V D Z T T I O Y
H D X P P G X K V H F K T R K G R P
U L F R E E M A N A D N A L R A G K
R E J V Q Q S W X Y N Z Q G G C N Y
C F S Q N K Q I E N O D Q I I E I S
H N D R C U N N U M A N Y E Y U L A
I I R Z W U T T D R H C K K C D P G
L E R S M R R R O W C G B U E R A A
L S T D A F E U N O K O R N S E H D
X D P C U Y E G B B F I A O T L C R
I F C I F Y V G T E E N Q R I L M A
R M F U T E E Z R T S L E G N E T S
D G S Q Z Z S G R O E N I N G K Z E
N S M P D N Q U R E D M A S C J R A
E J B Y I L L B H J H G I Z X E K C
H W L W E T O K R F J M Y N V X A F
V A S N U L T O S S A C I P E H K W
N O O M C E N R O E A V P H F M B R

TRIVIA 1

- a 3. b 5. a 7. c 9. c
- c 4. c 6. b 8. a 10. b

TRIVIA 2

- c 3. a 5. c 7. c 9. a
- b 4. b 6. a 8. b 10. c

TRIVIA 3

- a 3. b 5. b 7. a 9. b
- c 4. a 6. c 8. c 10. a

CRYPTOQUIP 1

American state in which all the people love to watch a Valerie Harper sitcom: Rhoda Island.

CRYPTOQUIP 2

When I chose to attempt to push my way through that huge crowd, I made the throng decision.

CRYPTOQUIP 3

A famed noble knight of Camelot attended yesterday's black-tie affair. The gala had Galahad.

CROSSWORD 1

FLAW FEAR SHOE
LOGE ELO TUNA
EARL MID TERMS
AMALFI SURREY
ULNA BEY
MID POINT OOPS
ARE ESTEE FDR
RSVP MIDRIFFS
IRA SLAM
SALAMI ATBATS
MIDWIVES ELIA
UDON ASS ALEG
TAGS NEO TIDE

CROSSWORD 2

PLED FDA ELBA
YORE ION DEEP
ROSA ENTWINES
ENTRANT ATONE
MID RIO
RAVEL ENTREAT
ANA ELS SIB
ENTICED ACCRA
OAK UFO
LAUDS ENTEBBE
ENTITLED ROOS
ATAN ALE CUSP
HIFHIF SVIR FITRIV

CROSSWORD 3

BEG BAT
BEAU DU VET
SOAVE EROTIC
ARTESIAN WELLS
WES SORTS TAR
SENS REPO
GRIDS SPUDS
HEIR SEAT
INT EVICT FBI
STUFFED SHELLS
SALINE WRATH
LILTS ATMS
PEI YEE

SUDOKU 1

7	3	1	9	2	4	6	8	5
8	4	6	1	5	7	9	2	3
2	9	5	3	6	8	1	4	7
4	7	2	8	1	6	5	3	9
5	8	9	4	7	3	2	1	6
1	6	3	2	9	5	8	7	4
9	5	8	7	4	2	3	6	1
3	1	4	6	8	9	7	5	2
6	2	7	5	3	1	4	9	8

Difficulty Level ★

6/13

SUDOKU 2

9	4	8	2	5	7	6	1	3
5	7	6	4	1	3	9	2	8
1	2	3	6	8	9	4	7	5
7	8	5	3	6	4	1	9	2
3	9	4	1	2	8	7	5	6
2	6	1	9	7	5	8	3	4
4	1	7	8	3	2	5	6	9
8	5	2	7	9	6	3	4	1
6	3	9	5	4	1	2	8	7

Difficulty Level ★★

6/14

SUDOKU 3

4	5	3	7	6	9	1	8	2
6	8	9	1	3	2	4	7	5
2	7	1	8	5	4	3	6	9
8	2	4	6	9	3	7	5	1
1	3	6	5	8	7	9	2	4
5	9	7	4	2	1	8	3	6
7	4	2	3	1	5	6	9	8
3	6	5	9	4	8	2	1	7
9	1	8	2	7	6	5	4	3

Difficulty Level ★★★

6/15

The College “lowkey grateful I kept this” Packing List

Get 30% off textbook solutions
with code **classof26**

Exp 8/15. More Terms at quizlet.com/content/promos

- ☒ **Mr. Snugglepuffs**
- ☒ ***That* Prom photo**
- ☒ **Quizlet**

Q

