



GUAM POWER AUTHORITY

ATURIDÁT ILEKTRESEDÁT GUAHAN
P.O.BOX 2977 • AGANA, GUAM U.S.A. 96932-2977

FOR IMMEDIATE RELEASE

02 JUNE 2018

FOR MORE INFORMATION CONTACT
PATTI L. DIEGO
PROGRAM COORDINATOR III
PHONE NO.: 648-3226

FOLLOW UP STATEMENT
Cause of Power Outage
Saturday evening, 01 June 2019

DISCLAIMER: Beware Graphic Image of Electrocuted Cat Included

Official response from GPA General Manager John M. Benavente, P.E., regarding the cause of a power outage Saturday evening, 01 June 2019 at 8:55p.m.:

GPA findings indicate that a cat came into contact with equipment within GPA's Tumon Substation at 8:55p.m., causing a fault in the island wide power system.

The fault, impacting such a heavy power load center at that time, caused a sequence of events within the power grid. GPA's Macheche and Talofofo combustion turbine units tripped off-line; followed by the Aggreko units dropping to 2 megawatts; followed by the Cabras 2 base load generator tripping off-line, and GPA's MEC 9 unit to experience a high temperature bellows (technical piece of equipment) rupture, requiring a reduction of generation output from 44 to 22 megawatts.

With the fault and rapid loss of generation within the system GPA's generation teams worked to bring all other stand-by generators on-line to meet the load demand; and stabilize the power system. The focus in such situations is always to avoid a power system black out.

Some customers had their power restored after a 20-minute outage; some experienced a 2-hour outage. The last customer was restored at 10:59p.m.

-more-

2-2-2-2-2-



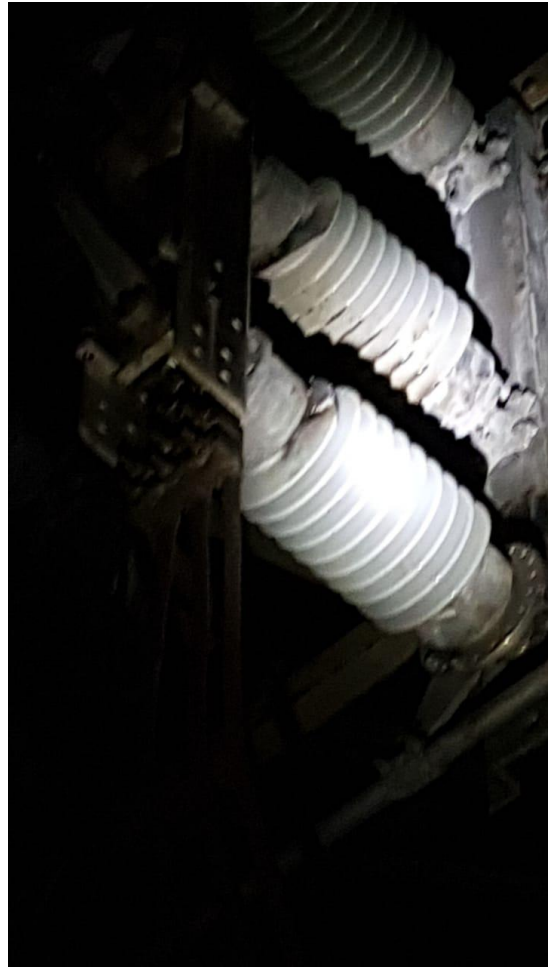
Electrocuted Cat found in GPA Tumon Substation 01 June 2019

-more-

3-3-3-3-



GPA Tumon Substation Bus (fault site)



GPA Tumon Substation Bus (fault site)

#####