



These displays are meant to show concepts for planning purposes only and are subject to change.

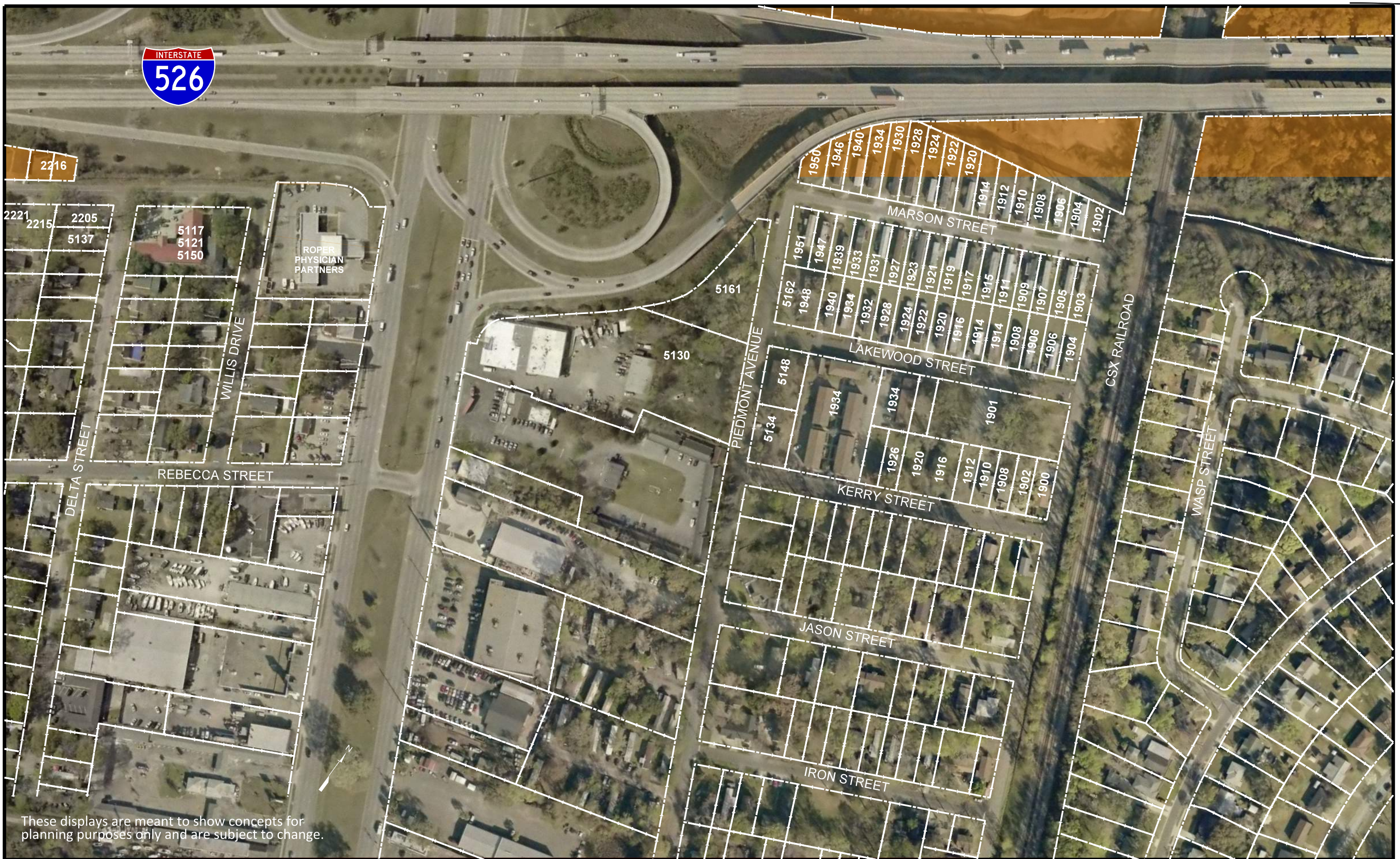
-  PROPERTY LINE
-  PROPOSED RIGHTS OF WAY

SCALE: N.T.S
JULY 2022

CAMPS COMMUNITY



I-526 LCC WEST
NEIGHBORHOOD MAP
I-526 WEST
PREFERRED ALTERNATIVE



These displays are meant to show concepts for planning purposes only and are subject to change.

- PROPERTY LINE
- PROPOSED RIGHTS OF WAY

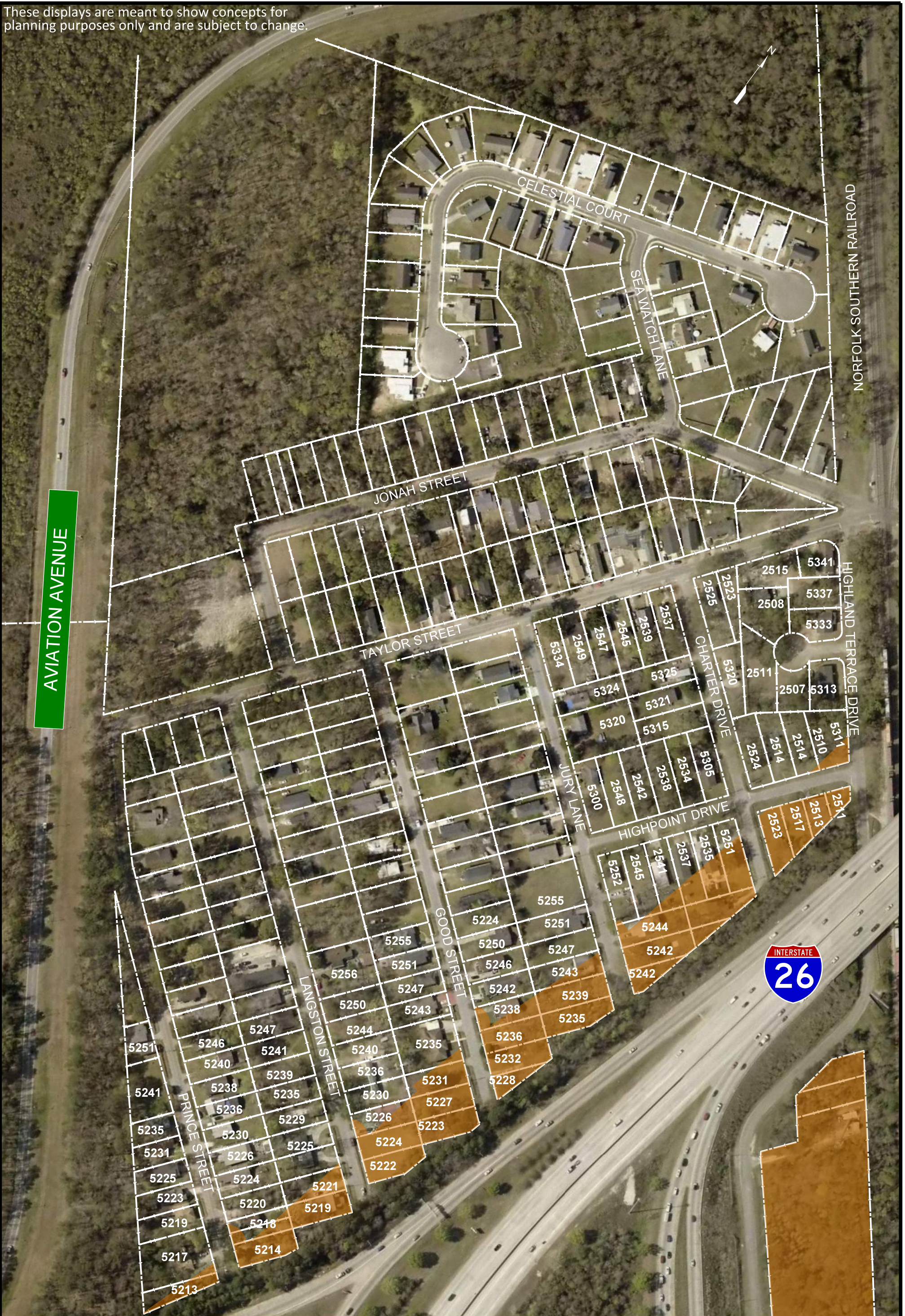
SCALE: N.T.S
JULY 2022

FERNDALE COMMUNITY



I-526 LCC WEST
NEIGHBORHOOD MAP
I-526 /I-26 INTERCHANGE
PREFERRED ALTERNATIVE



These displays are meant to show concepts for planning purposes only and are subject to change.



AVIATION AVENUE

NORFOLK SOUTHERN RAILROAD



 PROPERTY LINE
 PROPOSED RIGHTS OF WAY

SCALE: N.T.S.
JULY 2022

**HIGHLAND
TERRACE
COMMUNITY**





**I-26 LCC WEST
NEIGHBORHOOD MAP
I-26 / I-26 INTERCHANGE
PREFERRED ALTERNATIVE**

These displays are meant to show concepts for planning purposes only and are subject to change.



ACCESS TO PROPERTIES ALONG DEACON STREET FROM ELDER AVENUE WILL BE IMPACTED BY THE PROJECT. PARCELS 5280, 5274, 5270, AND 5264 WILL BE TOTAL ACQUISITIONS DUE TO LOSS OF ACCESS - SEE INSET ABOVE

SEE NOTE BELOW

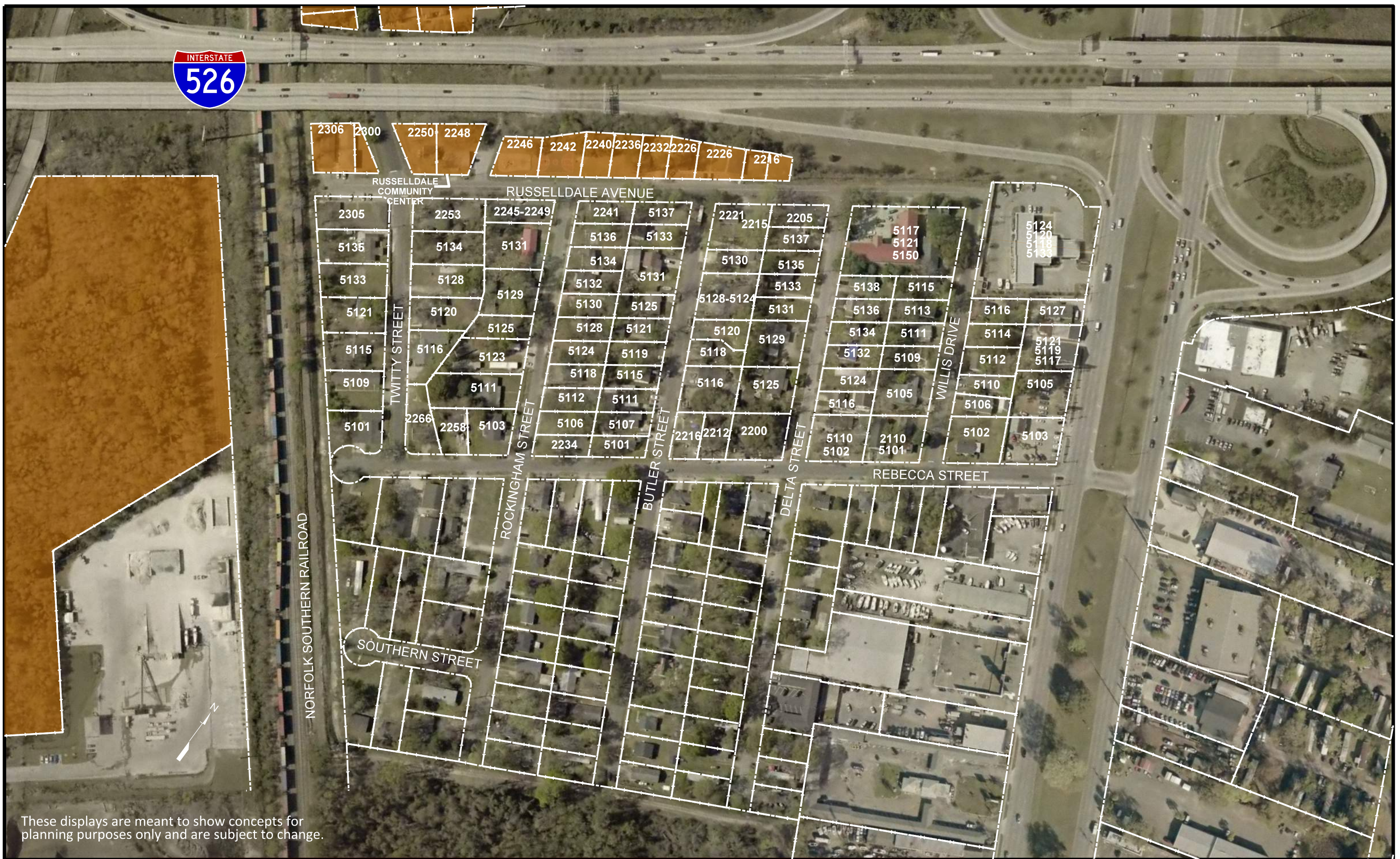
-  PROPERTY LINE
-  PROPOSED RIGHTS OF WAY

SCALE: N.T.S.
JULY 2022

LIBERTY PARK COMMUNITY



I-526 LCC WEST NEIGHBORHOOD MAP
I-526 / I-26 INTERCHANGE PREFERRED ALTERNATIVE



These displays are meant to show concepts for planning purposes only and are subject to change.

- PROPERTY LINE
- PROPOSED RIGHTS OF WAY

SCALE: N.T.S
JULY 2022

RUSSELDALE COMMUNITY



I-526 LCC WEST
NEIGHBORHOOD MAP
I-526 /I-26 INTERCHANGE
PREFERRED ALTERNATIVE