


THE GREENLAND CONNECTION

FLOOD WOMAN VS ~~CLIMATE DOOM~~ Part 2



... AS CLIMATE DOOM TRAINS HIS MIGHT ON THE OLD CITY OF CHARLESTON, FLOOD WOMAN SPRINGS INTO ACTION. UNKNOWN TO THE PUBLIC, SHE HAS THE POWER TO STOP ANYTHING THAT ACCELERATES -- FROM RISING WATERS TO AVALANCHES. BUT ONLY FOR SHORT PERIODS. SHE HAS NEVER FACED THE ACCELERATING DESTRUCTION THAT CLIMATE DOOM HAS UNLEASHED ...

THIS WILL SLOW YOU DOWN CLIMATE DOOM!

... BUT FOR HOW LONG?

Written by Tony Bartelme

Illustrations by Steve Ocier, Jayson Jover Mabelin, wabz, Jeremiah Kotico, Kimberly Sotomayor, Bianca Ocier

This is part of The Post and Courier's Rising Waters project and the Pulitzer Center for Investigative Reporting's Connected Coastline initiative

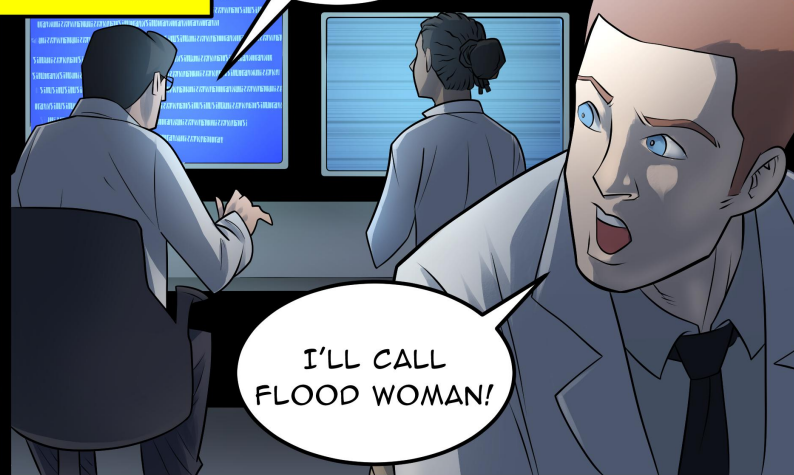


FLOOD WOMAN
HOLDS BACK
CLIMATE DOOM,
GIVING HER COL-
LEAGUES AT THE
LOWCOUNTRY
HAZARDS CENTER
PRECIOUS TIME
TO STUDY ITS
HORRIBLE FORCES.

I'VE GOT IT.
CLIMATE DOOM IS
TARGETING GREENLAND
AND IS CHANGING THE
EARTH'S GRAVITY.

GREENLAND?
GRAVITY?

I'LL CALL
FLOOD WOMAN!



AS FLOOD WOMAN
ABSORBS CLIMATE DOOM'S
ACCELERATING FORCES,
SHE USES THAT ENERGY TO
ACCELERATE THROUGH TIME
AND SPACE. IN A BLINK SHE
IS AT THE GREAT ICE PACK
OF GREENLAND ...



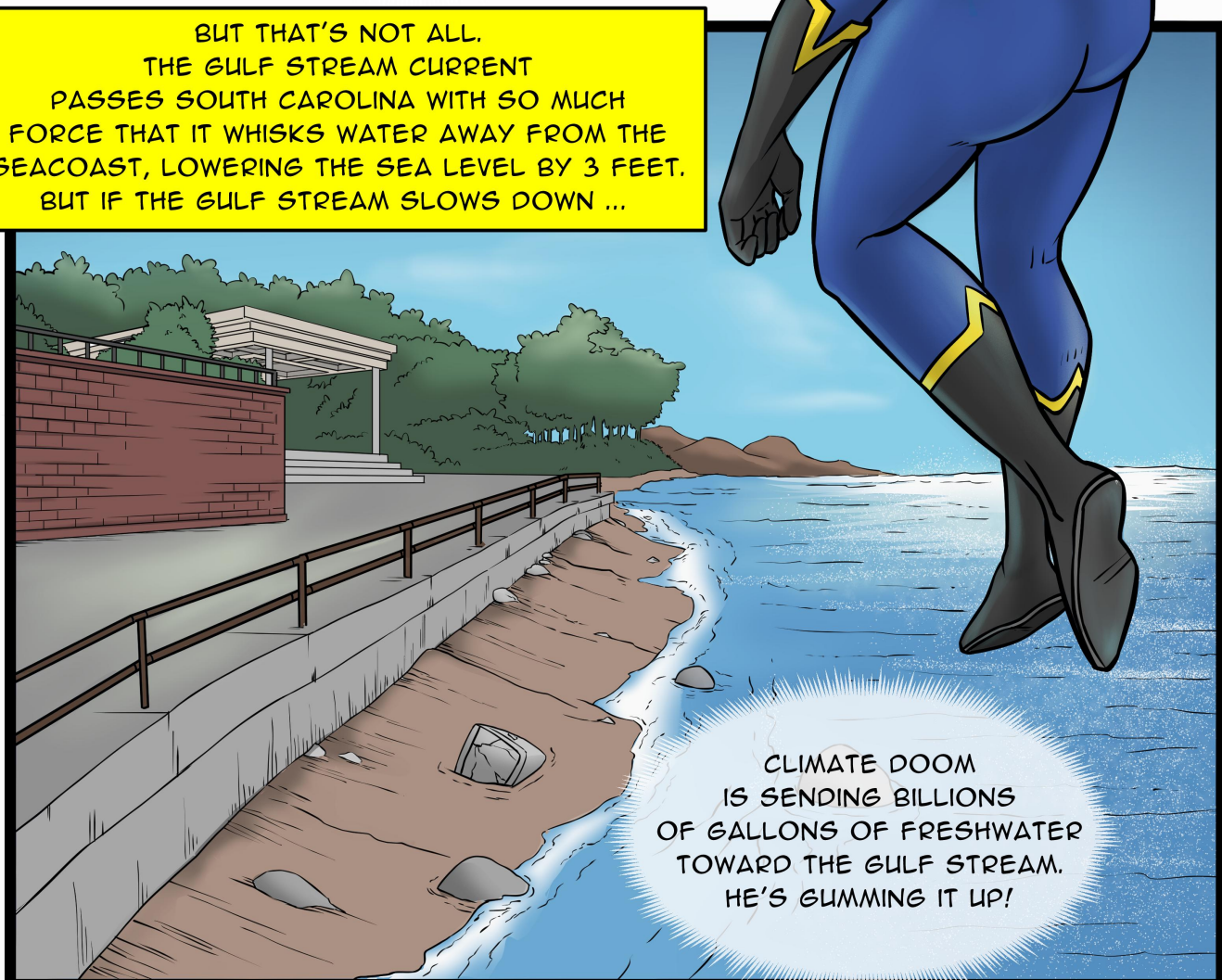
SO THAT'S
HOW CLIMATE DOOM
PLANS TO DESTROY
CHARLESTON!

GREENLAND'S ICE IS SO MASSIVE THAT IT LOCKS UP GRAVITY -- SO MUCH GRAVITY THAT IT PULLS THE OCEAN TOWARD IT. THIS EFFECTIVELY LOWERS SEA LEVELS FAR AWAY. BUT IF THAT ICE MELTS, THE GRAVITY IS RELEASED TOO. WITH LESS PULL, THE SEA SLOSHES BACK AND SEA LEVELS RISE IN DISTANT PLACES, INCLUDING CHARLESTON.



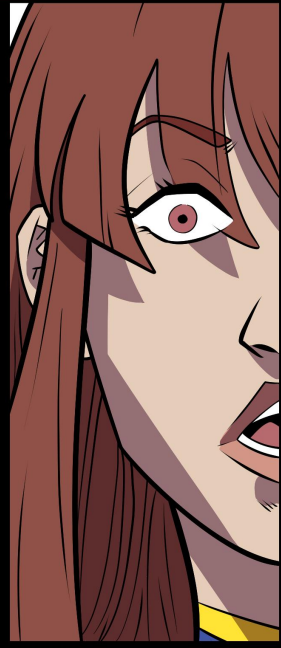
HE'S RELEASING
THE GRAVITY IN
GREENLAND!

BUT THAT'S NOT ALL.
THE GULF STREAM CURRENT
PASSES SOUTH CAROLINA WITH SO MUCH
FORCE THAT IT WHISKS WATER AWAY FROM THE
SEACOAST, LOWERING THE SEA LEVEL BY 3 FEET.
BUT IF THE GULF STREAM SLOWS DOWN ...

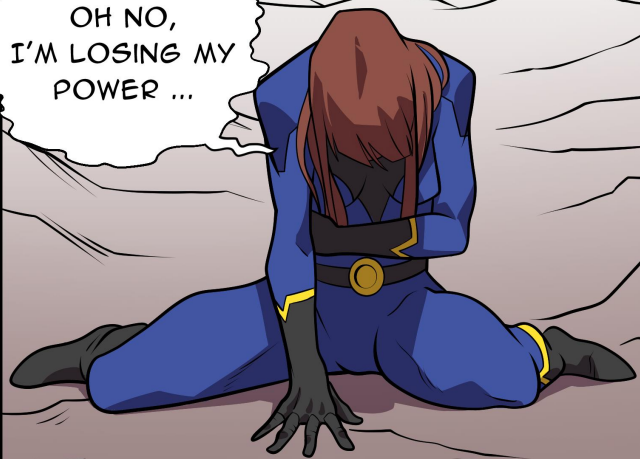


CLIMATE DOOM
IS SENDING BILLIONS
OF GALLONS OF FRESHWATER
TOWARD THE GULF STREAM.
HE'S GUMMING IT UP!

SUDDENLY,
FLOOD WOMAN GROWS
WEAKER ...



OH NO,
I'M LOSING MY
POWER ...



CLIMATE DOOM'S POWERS
BEGIN TO ACCELERATE AGAIN ...



A NOTE ABOUT THE SCIENCE: ICE DOES IN FACT LOCK UP GRAVITY, AND AS GREENLAND'S ICE MELTS, THAT GRAVITY IS RELEASED. THIS ACTUALLY MAKES THE SEA LEVEL GO DOWN NEAR GREENLAND AND RISE FARTHER AWAY. IN FACT, BECAUSE GREENLAND HAS SO MUCH ICE, WHAT'S HAPPENING THERE HAS A GREATER IMPACT ON SOUTH CAROLINA'S COAST THAN MELTING ICE IN ANTARCTICA AND THE WORLD'S MOUNTAIN GLACIERS. FOR MORE ABOUT THIS AND OTHER CLIMATE CHANGE TOPICS, VISIT WWW.POSTANDCOURIER.COM/RISEING-WATERS

TO BE CONTINUED ...