

# Greenville County Council Benchmark 2020

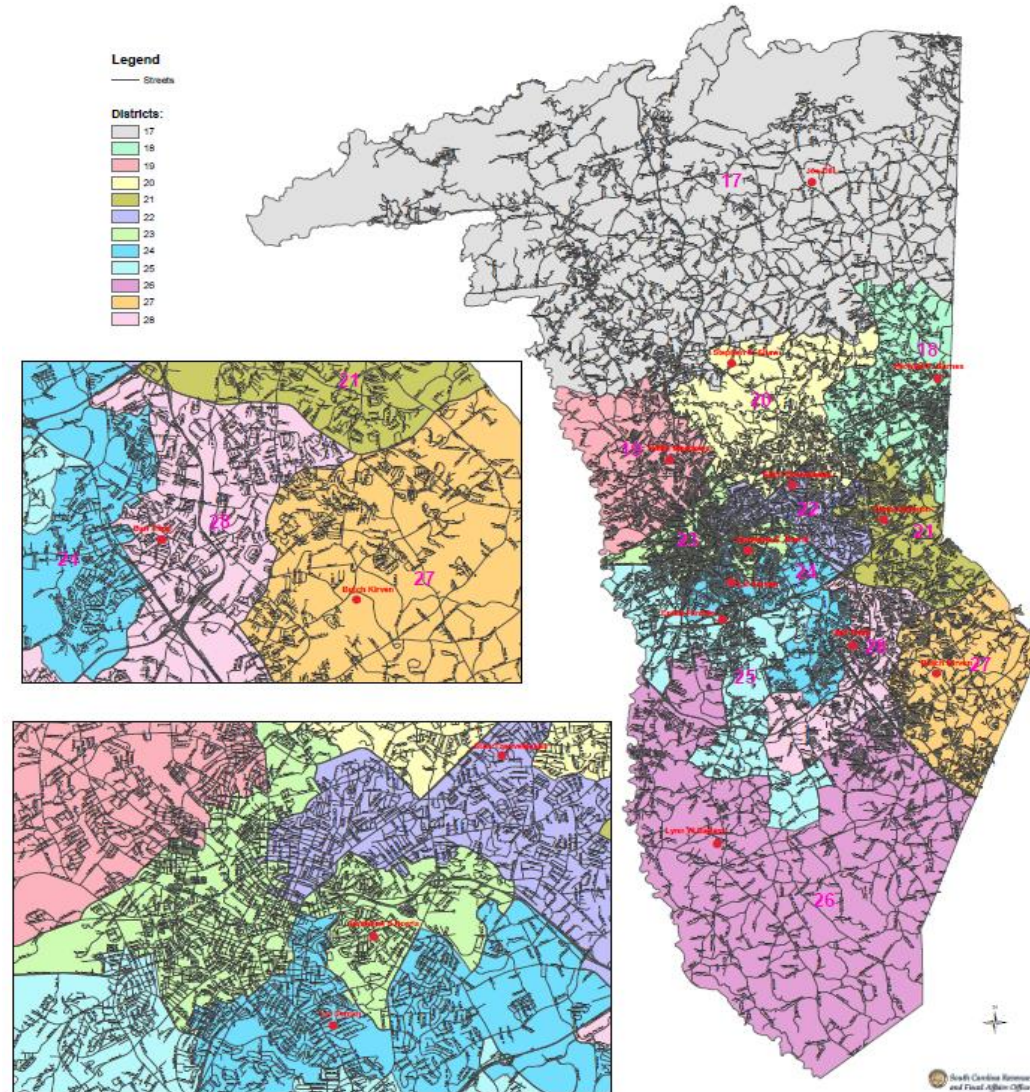


TABLE 1: 2020 CENSUS COUNTS APPLIED TO CURRENT DISTRICTS

*Note: The population of 818 housed at Perry was removed for this analysis*

District	2020 Census	Goal	Over/ (Under)	% Deviation
17	41,473	43,726	(2,253)	-5.15%
18	44,197	43,726	471	1.08%
19	43,465	43,726	(261)	-0.60%
20	42,687	43,726	(1,039)	-2.38%
21	41,862	43,726	(1,864)	-4.26%
22	40,426	43,726	(3,300)	-7.55%
23	41,700	43,726	(2,026)	-4.63%
24	45,302	43,726	1,576	3.60%
25	39,459	43,726	(4,267)	-9.76%
26	45,838	43,726	2,112	4.83%
27	53,765	43,726	10,039	22.96%
28	44,542	43,726	816	1.87%
Lowest Deviation:		-9.76%		
Highest Deviation:		22.96%		
Deviation Range:		32.72%		

TABLE 2: TOTAL POPULATION BY RACE \*RACE DEFINED USING DOJ DEFINITIONS. NOT HISPANIC OR LATINO IS ABBREVIATED AS NH.

District	Total	Hispanic	% Hispanic	NH White	% NH White	NH DOJ Black*	% NH DOJ Black	NH Other Race	% NH Other Race
17	41,473	1,810	4.36%	35,755	86.21%	2,055	4.96%	1,853	4.47%
18	44,197	5,313	12.02%	30,036	67.96%	5,952	13.47%	2,896	6.55%
19	43,465	9,879	22.73%	25,429	58.50%	6,329	14.56%	1,828	4.21%
20	42,687	4,569	10.70%	32,037	75.05%	3,351	7.85%	2,730	6.40%
21	41,862	2,610	6.23%	30,958	73.95%	3,670	8.77%	4,624	11.05%
22	40,426	3,197	7.91%	30,388	75.17%	4,224	10.45%	2,617	6.47%
23	41,700	7,434	17.83%	16,292	39.07%	16,468	39.49%	1,506	3.61%
24	45,302	3,433	7.58%	32,509	71.76%	7,002	15.46%	2,358	5.21%
25	39,459	6,716	17.02%	11,768	29.82%	19,530	49.49%	1,445	3.66%
26	45,838	4,213	9.19%	32,111	70.05%	7,214	15.74%	2,300	5.02%
27	53,765	4,370	8.13%	38,132	70.92%	7,653	14.23%	3,610	6.71%
28	44,542	4,468	10.03%	28,173	63.25%	8,661	19.44%	3,240	7.27%
Total	524,716	58,012	11.06%	343,588	65.48%	92,109	17.55%	31,007	5.91%

Note: Tract 3203, Block 2008 which contains prison population of 818 – Perry Correctional Institute – is not included in this analysis.

TABLE 3: VOTING AGE POPULATION BY RACE \*RACE DEFINED USING DOJ DEFINITIONS. NOT HISPANIC OR LATINO IS ABBREVIATED AS NH.

District	VAP Total	VAP Hispanic	% VAP Hispanic	VAP NH White	% VAP NH White	VAP NH DOJ Black*	% VAP NH DOJ Black	VAP NH Other Race	% VAP NH Other Race
17	32,929	1,179	3.58%	29,044	88.20%	1,358	4.12%	1,348	4.09%
18	33,813	3,571	10.56%	24,071	71.19%	4,180	12.36%	1,991	5.89%
19	33,969	6,285	18.50%	21,702	63.89%	4,550	13.39%	1,432	4.22%
20	33,166	2,944	8.88%	25,848	77.94%	2,383	7.19%	1,991	6.00%
21	32,001	1,787	5.58%	24,318	75.99%	2,650	8.28%	3,246	10.14%
22	32,762	2,322	7.09%	25,211	76.95%	3,236	9.88%	1,993	6.08%
23	32,772	4,956	15.12%	14,374	43.86%	12,284	37.48%	1,158	3.53%
24	35,393	2,416	6.83%	26,039	73.57%	5,186	14.65%	1,752	4.95%
25	29,569	4,179	14.13%	9,870	33.38%	14,479	48.97%	1,041	3.52%
26	34,721	2,755	7.93%	25,334	72.96%	5,011	14.43%	1,621	4.67%
27	39,420	2,858	7.25%	28,757	72.95%	5,404	13.71%	2,401	6.09%
28	34,911	3,104	8.89%	23,067	66.07%	6,380	18.28%	2,360	6.76%
Total	231,412	23,044	9.96%	164,568	71.11%	30,641	13.24%	13,159	5.69%

Note: Tract 3203, Block 2008 which contains prison population of 818 – Perry Correctional Institute – is not included in this analysis.