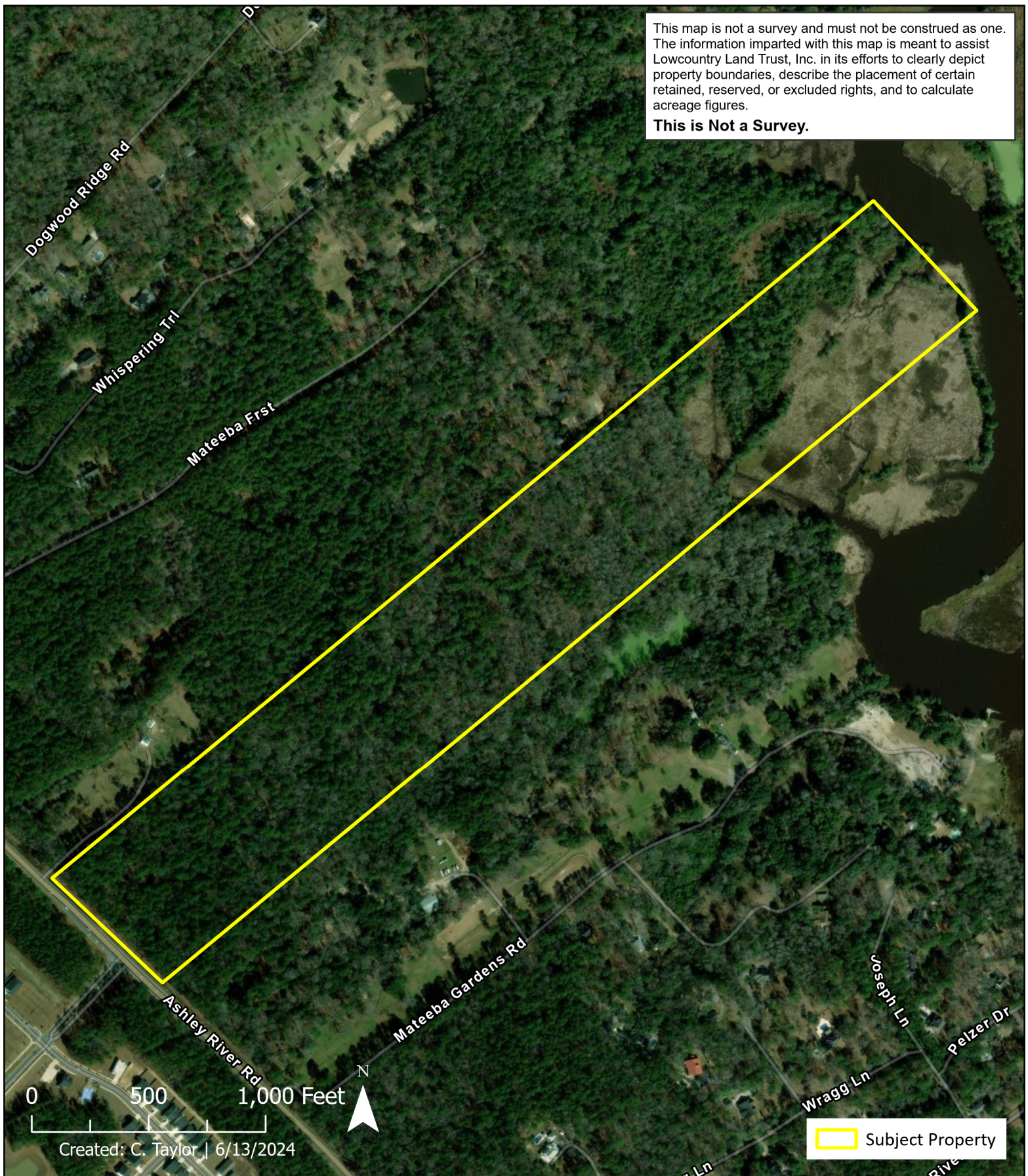


This map is not a survey and must not be construed as one. The information imparted with this map is meant to assist Lowcountry Land Trust, Inc. in its efforts to clearly depict property boundaries, describe the placement of certain retained, reserved, or excluded rights, and to calculate acreage figures.

This is Not a Survey.



2024 Aerial: Barry Tract

Created by Lowcountry Land Trust for presentation and depiction purposes only. Boundaries, while approximate, were established using the best available information which may include: surveys, tax maps, GIS calculations, and field mapping using GPS and/or orthophotos. Refer to legal description(s), plat(s), baseline documentation report, and conservation easement for full terms. Boundary from Charleston County parcel data 2023. NLCD, ESRI World Imagery Hybrid shown.