

LEGEND:

EXISTING CONDITIONS

- MINOR CONTOURS 488
- MAJOR CONTOURS 480
- BUILDING [Symbol]
- FENCE [Symbol]
- GAS LINE [Symbol]
- GAS VALVE [Symbol]
- ROAD E [Symbol]
- ROAD R-O-W [Symbol]
- SANITARY SEWER LINE [Symbol]
- SPOT ELEVATION X 437.75
- WATER LINE [Symbol]
- WATER VALVE [Symbol]

TREE TO BE REMOVED



- SEWER CLEANOUT [Symbol]
- POWER POLE [Symbol]
- GUY WIRE [Symbol]
- ROAD SIGN [Symbol]

WETLANDS

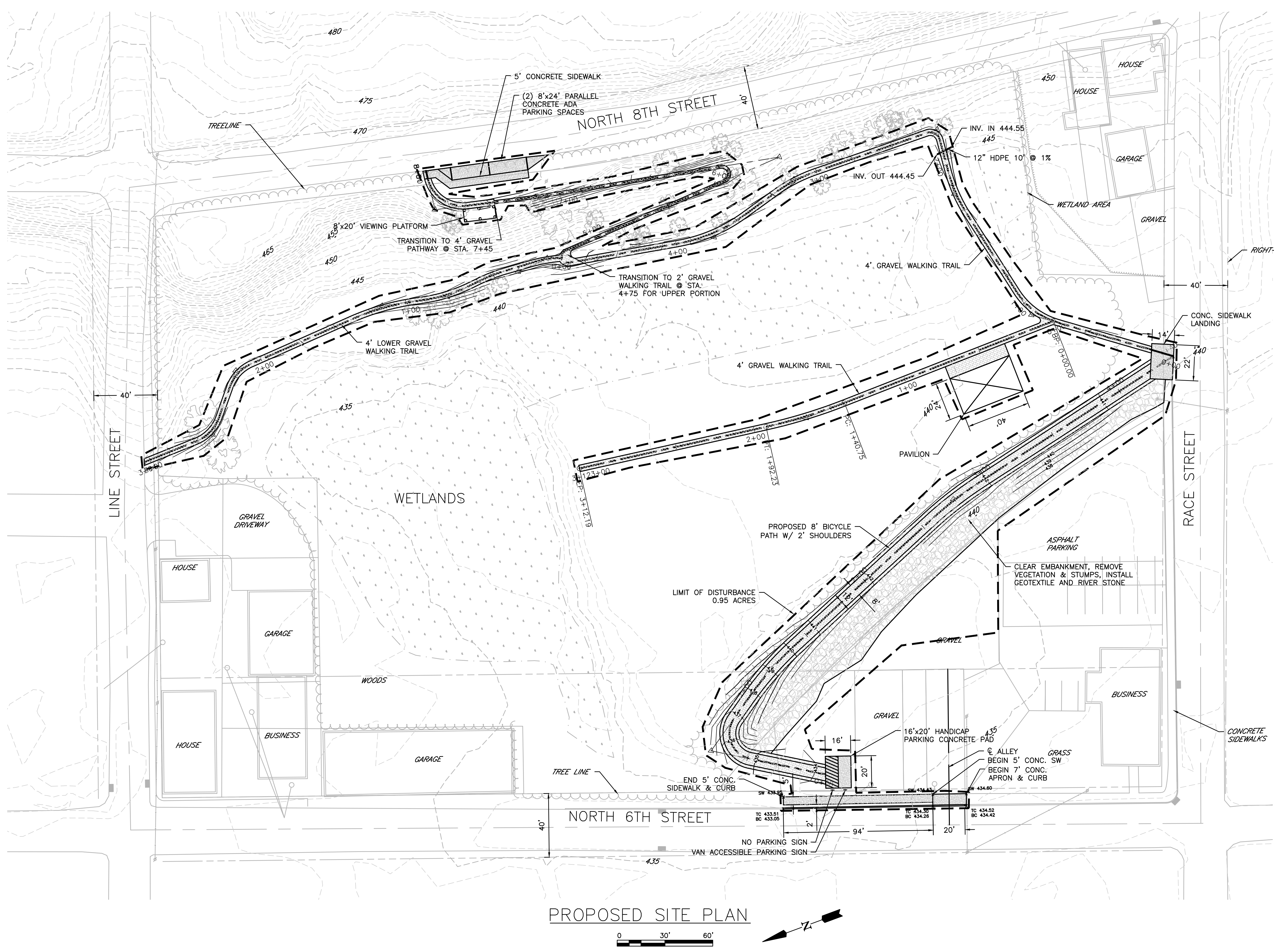


PROPOSED CONDITIONS

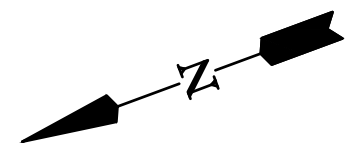
- SPOT ELEVATION X 437.75
- MINOR CONTOUR 488
- MAJOR CONTOUR 480
- STORM PIPE [Symbol]
- LIMIT OF DISTURBANCE [Symbol]
- INLET PROTECTION (I.P.)
- SIDEWALKS [Symbol]

E&S NOTES:

1. TOTAL LIMIT OF DISTURBANCE IS 0.95 ACRES.
2. ALL AREAS DISTURBED OUTSIDE OF PATHWAYS WILL BE RECONSTRUCTED WITH 6" UNCOMPACTED TOPSOIL AND COVERED WITH VEGETATION UNLESS NOTED OTHERWISE.
3. ALL AREAS WILL BE DRAINED TO GRADE.
4. ALL HDPE CULVERTS WILL BE SMOOTH BORE.
5. ALL HDPE CULVERT END SECTIONS WILL BE CMP.
6. ALL EMBANKMENTS GREATER THAN 3:1 WILL HAVE TEMPORARY EROSION CONTROL BLANKETS S75 TENSAR OR EQUAL.



PROPOSED SITE PLAN



PREPARED FOR:
City of Sunbury
225 Market Street
Sunbury, PA 17801

SWEEP TRAIL PROJECT
CITY OF SUNBURY, PA
NORTHUMBERLAND COUNTY

| | | |
|------|-----------|-------|
| NO.: | REVISION: | DATE: |
| | | |
| | | |
| | | |
| | | |
| | | |

CES ENGINEERING, LLC
- PUTTING YOU FIRST -
• MCCONNELLSBURG, PA (717) 485-5440 • HUNTINGDON, PA (814) 644-6621
A FULL SERVICE ENGINEERING, LAND SURVEYING & BUILDING DESIGN FIRM
7910 Sunrise Camp Road, Huntingdon, PA 16652
(814) 644-6621
lzeger@ces-engr.com

| | | |
|---------------------------------|------------|----------------|
| SHEET TITLE: PROPOSED SITE PLAN | | |
| SCALE: 1"=30' | DRAWN: LSZ | DATE: 03/15/22 |
| PROJECT NO: 13003.02.27 | | |
| SHEET NO.: 4 | C4 | |
| OF: 9 | | |