



# Aviation Investigation Preliminary Report

<b>Location:</b>	Lock Haven, PA	<b>Accident Number:</b>	ERA24FA292
<b>Date &amp; Time:</b>	July 4, 2024, 10:10 Local	<b>Registration:</b>	N739GV
<b>Aircraft:</b>	Cessna 172N	<b>Injuries:</b>	1 Fatal
<b>Flight Conducted Under:</b>	Part 91: General aviation - Instructional		

On July 4, 2024, about 1010 eastern daylight time, a Cessna 172N airplane, N739GV, was destroyed when it was involved in an accident near Lock Haven, Pennsylvania. The student pilot was fatally injured. The airplane was operated as a Title 14 *Code of Federal Regulations* Part 91 instructional flight.

According to preliminary radar data provided by the Federal Aviation Administration, the airplane departed from runway 27 at Williamsport Regional Airport (IPT), Williamsport, Pennsylvania at 0951. The airplane proceeded on a west-southwesterly ground track until it entered an extended left downwind leg for runway 9L at William T. Piper Memorial Airport (LHV), Lock Haven, Pennsylvania. The airplane continued in the left traffic pattern and lined up on final approach to runway 9L. About half-way down the 3,799-ft-long runway, the airplane began a left, climbing turn. During the climbing turn, ground speed slowly increased from 36 to 46 knots. The last recorded radar target showed the airplane on a north-northwesterly ground track at a groundspeed of 46 knots. Figure 1 depicts of the airplane's ground track relative to LHV and the accident site.

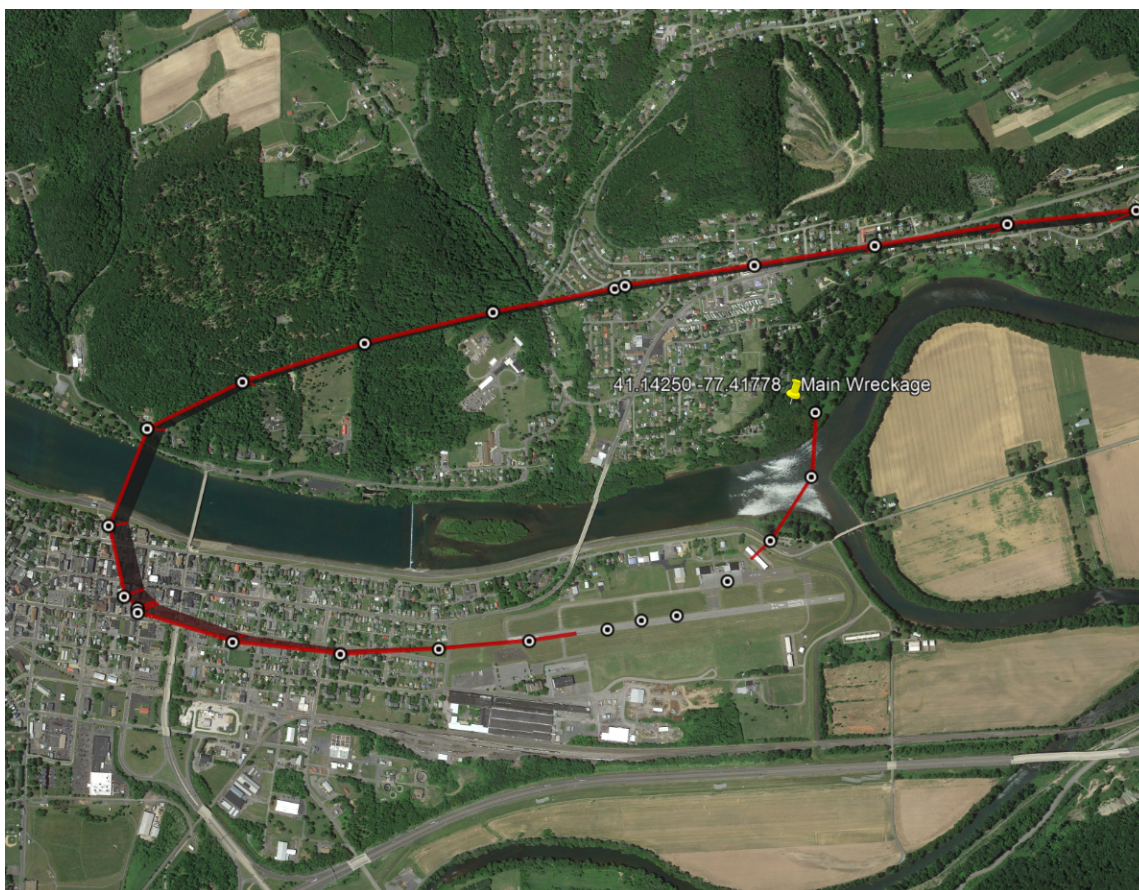


Figure 1 – Radar track (red line) showing the approach to LHV and the accident site location annotated.

A witness, who was standing in the Susquehanna River at the time, observed the airplane during the seconds before the accident. He stated that the airplane came toward him at an altitude of about 200 ft. He watched as the airplane made a left turn and he thought that there was no way that the airplane would make it over the trees. About two seconds after the airplane crossed over the trees, he heard the sounds of impact. He went to get his phone on the bank of the river and called 911. He also reported the airplane's engine was "definitely running" and was not "missing." He did believe that the airplane was "struggling."

The airplane initially contacted the top of a tall maple tree before colliding with another tall tree about 165 feet further to the west. The wreckage came to rest, upright, oriented on a westerly heading at the base of the tree and was consumed in a postimpact fire. The accident site was about 1/2-mile northeast of LHV. All structural components of the airplane were accounted for at the accident site.

The student pilot, age 17, had logged 26.9 total hours of flight experience, all in the accident airplane. Her initial solo flight occurred on June 16, 2024, after 21.7 hours of dual instruction. At that time, she logged 0.5 hours of solo flight. The accident flight was her second solo attempt, and her pilot logbook included an endorsement from her flight instructor to perform takeoffs and landings at LHV.

Recorded weather at IPT, at 0954, included an overcast ceiling at 3,100 ft, calm wind, and 10 miles visibility.

The wreckage was retained for further examination.

### Aircraft and Owner/Operator Information

<b>Aircraft Make:</b>	Cessna	<b>Registration:</b>	N739GV
<b>Model/Series:</b>	172N	<b>Aircraft Category:</b>	Airplane
<b>Amateur Built:</b>			
<b>Operator:</b>	QUARTER TO TWO FLYING CLUB INC	<b>Operating Certificate(s) Held:</b>	None
<b>Operator Designator Code:</b>			

### Meteorological Information and Flight Plan

<b>Conditions at Accident Site:</b>	VMC	<b>Condition of Light:</b>	Day
<b>Observation Facility, Elevation:</b>	KIPT, 525 ft msl	<b>Observation Time:</b>	09:54 Local
<b>Distance from Accident Site:</b>	23 Nautical Miles	<b>Temperature/Dew Point:</b>	25°C / 19°C
<b>Lowest Cloud Condition:</b>		<b>Wind Speed/Gusts, Direction:</b>	/ ,
<b>Lowest Ceiling:</b>	Overcast / 3100 ft AGL	<b>Visibility:</b>	10 miles
<b>Altimeter Setting:</b>	29.95 inches Hg	<b>Type of Flight Plan Filed:</b>	None
<b>Departure Point:</b>	Williamsport, PA (IPT)	<b>Destination:</b>	Williamsport, PA (IPT)

### Wreckage and Impact Information

<b>Crew Injuries:</b>	1 Fatal	<b>Aircraft Damage:</b>	Destroyed
<b>Passenger Injuries:</b>		<b>Aircraft Fire:</b>	On-ground
<b>Ground Injuries:</b>		<b>Aircraft Explosion:</b>	Unknown
<b>Total Injuries:</b>	1 Fatal	<b>Latitude, Longitude:</b>	41.1425,-77.41778 (est)

### Administrative Information

<b>Investigator In Charge (IIC):</b>	Hicks, Ralph
<b>Additional Participating Persons:</b>	Craig Musser; FAA/FSDO; New Cumberland, PA Casey Love; Textron Aviation; Wichita, KS James Childers; Lycoming Engines; Williamsport, PA
<b>Investigation Class:</b>	<a href="#">Class 3</a>
<b>Note:</b>	