

RAILROAD

LAYDOWN
AREA

STAGE

RR

PARKING

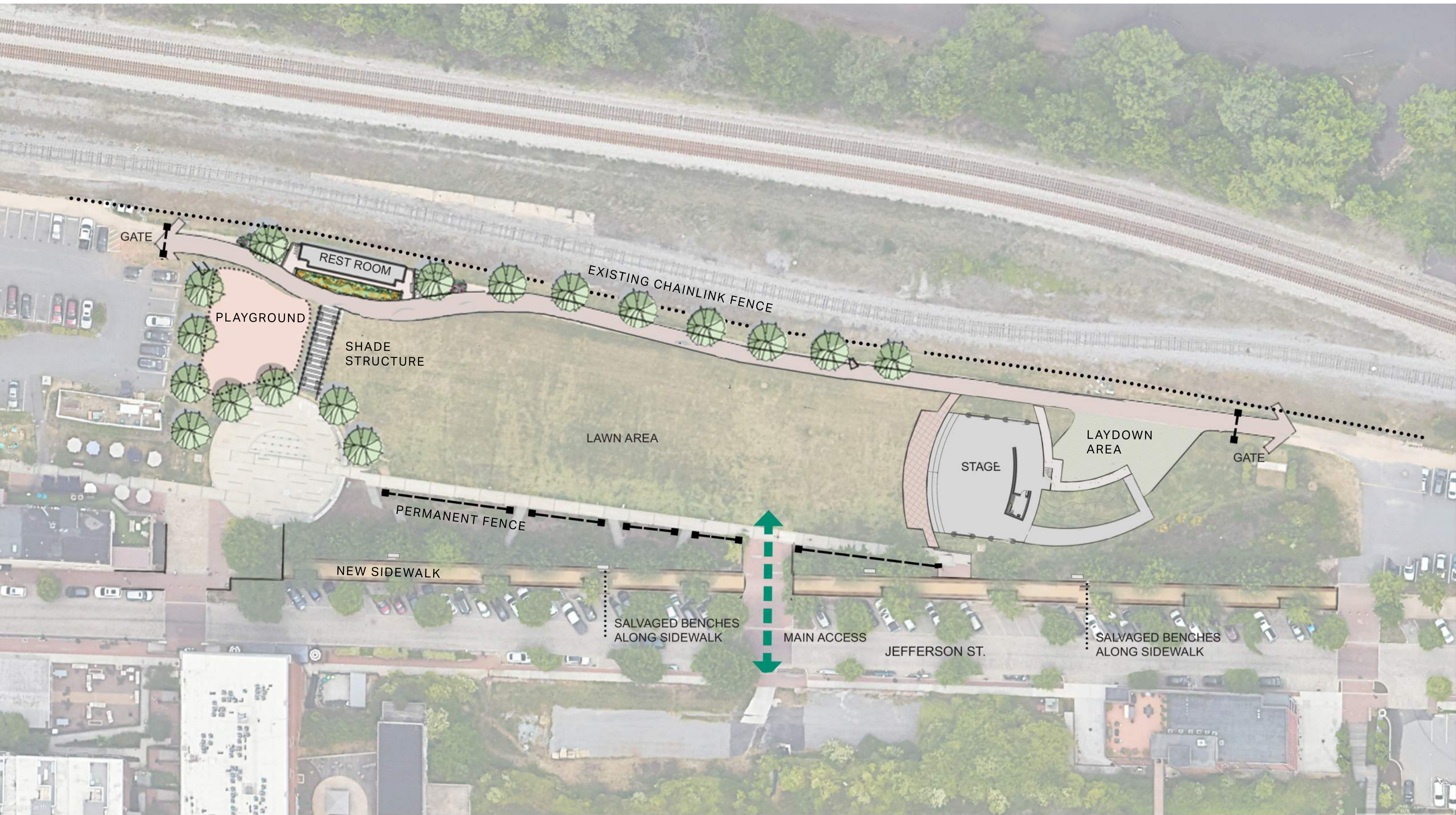
BIORETENTION

BIORETENTION

JEFFERSON ST



AECOM



GATE

REST ROOM

PLAYGROUND

SHADE
STRUCTURE

EXISTING CHAINLINK FENCE

LAWN AREA

PERMANENT FENCE

NEW SIDEWALK

SALVAGED BENCHES
ALONG SIDEWALK

MAIN ACCESS

JEFFERSON ST.

STAGE

LAYDOWN
AREA

GATE

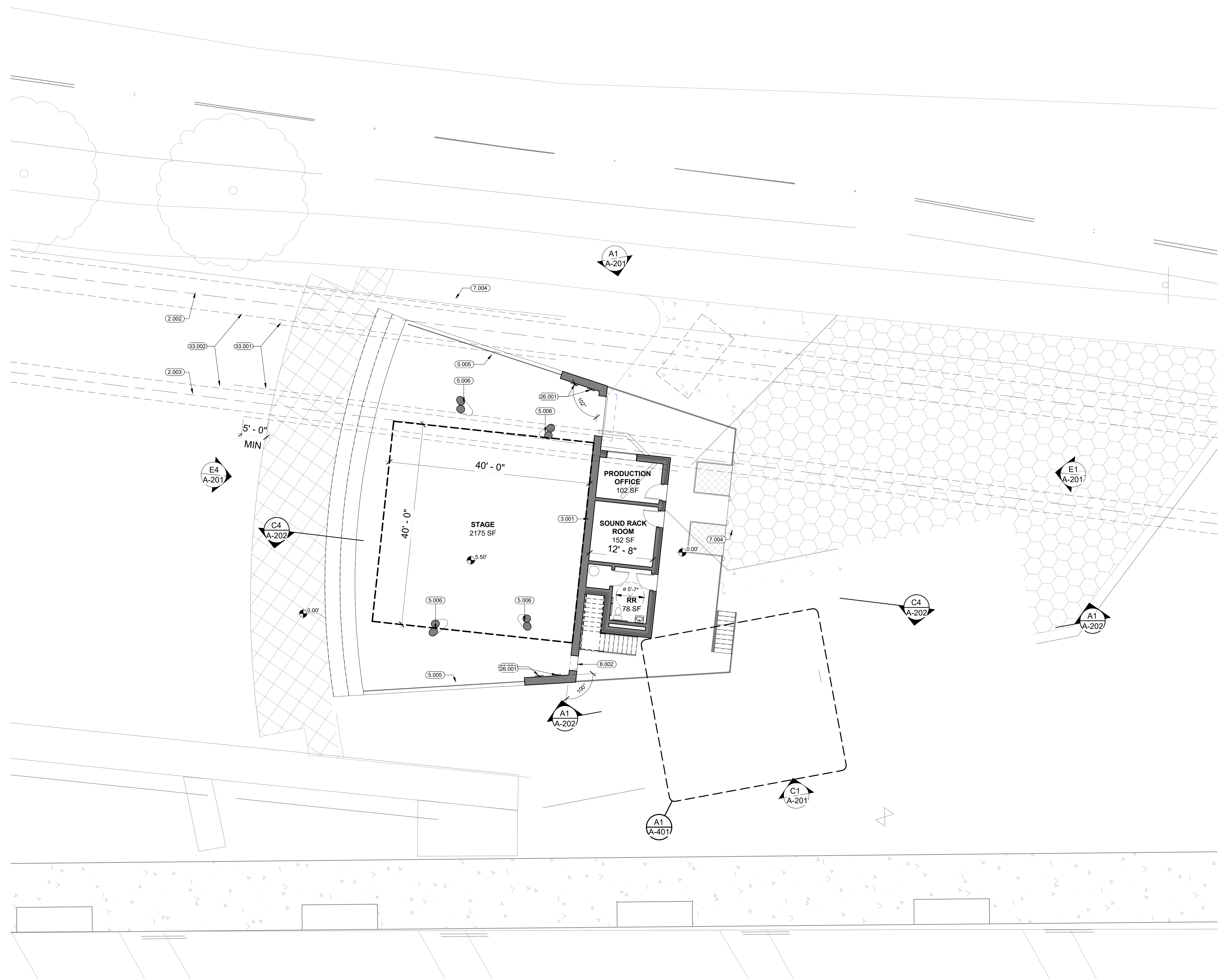
SALVAGED BENCHES
ALONG SIDEWALK

GENERAL NOTES - FLOOR PLANS:

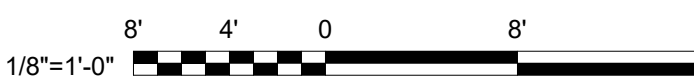
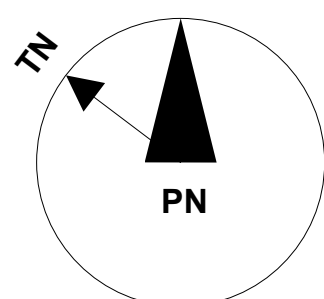
- A. REFER TO SHEET G-002 FOR ABBREVIATIONS.
B. REFER TO SHEET A-001 FOR GENERAL NOTES, LEGENDS AND SYMBOLS.
C. REFER TO STRUCTURAL, MECHANICAL, PLUMBING, FIRE PROTECTION, TELECOM AND ELECTRICAL DRAWINGS AND SPECIFICATIONS FOR ADDITIONAL WORK AND COORDINATE EXTENT WITH RESPECTIVE TRADES.
D. ALL DIMENSIONS ARE TO FINISH FACE OF NEW INTERIOR PARTITIONS, COLUMN CENTERLINE, FACE OF ROUGH OPENING OR FINISH FACE OF EXISTING WALLS UNO.
E. PROVIDE SOLID FRT WID BLOCKING OR METAL STRAPPING AT PARTITIONS AS REQUIRED TO ACCOMMODATE INSTALLATION OF CASEWORK, LOCKERS, GRAB BARS, AV EQUIPMENT, SIGNAGE AND ALL SCHEDULED EQUIPMENT AND ACCESSORIES.
F. FIRE RATED PARTITIONS ARE NOTED BY PARTITION TYPE. REFER TO LIFE SAFETY PLANS FOR REQUIRED FIRE RATED AND/OR SMOKE PARTITION LOCATIONS.

SHEET KEYNOTES:

- 2.002 EXISTING 72" SANITARY SEWER LINE
2.003 EXISTING 48" STORM SEWER LINE
3.001 ARCHITECTURAL CONCRETE SHEAR WALL POURED WITH FORM LINER, PATTERN AND TEXTURE TO BE DETERMINED
5.005 REMOVABLE STAINLESS STEEL RAILING
5.006 PAINTED GALVANIZED STEEL PIPE COLUMNS WITH CASE CONNEX BASE AND CAPITALS
7.004 EXTENT OF ROOF ABOVE
8.001 96" X 108" OVERHEAD COILING DOOR
26.001 ELECTRIC PANELS
33.001 OUTSIDE OF PROPOSED CASING
33.002 OUTSIDE OF EXISTING PIPE



GROUND FLOOR PLAN - AMPHITHEATER
1/8" = 1'-0"



GRAPHIC SCALES

PROJECT

**LYNCHBURG
RIVERFRONT PARK
DEVELOPMENT &
RENOVATION PROJECT**

1100 Jefferson St
Lynchburg, VA 24504

CLIENT



CITY OF LYNCHBURG

900 Church St
Lynchburg, VA 24504
434.856.2489 tel
www.lyncburgva.gov

ARCHITECT OF RECORD

AECOM

10 South Jefferson Street, Suite 1600
Roanoke, Virginia 24011
540.857.3100 tel 540.857.3180 fax
www.aecom.com

CONSULTANTS

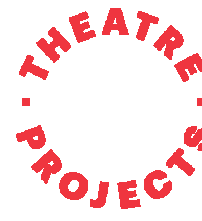


LAWRENCE PERRY & ASSOCIATES
Consulting Engineers

Mechanical, Electrical, Plumbing Engineering
Lawrence Perry & Associates, Inc.
15 E. Salem Ave., Suite 101
Roanoke, VA 24011
540.342.1816 tel 540.344.3410 fax
lpa-inc.com



Structural Engineering
Lynch Mykins
1519 Summit Ave., Suite 101
Richmond, VA 23230
804.346.3935 tel
lynchmykins.com



Theater Performance and Design
Theatre Project Consultants
47 Water St.
South Norwalk, CT 06854
203.299.0830 tel 203.299.0835 fax
theatreprojects.com

SUBMISSION

SCHEMATIC DESIGN SUBMISSION
04.18.2022

PROJECT NUMBER

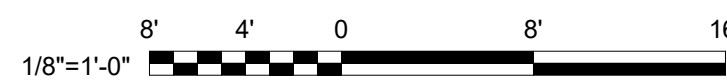
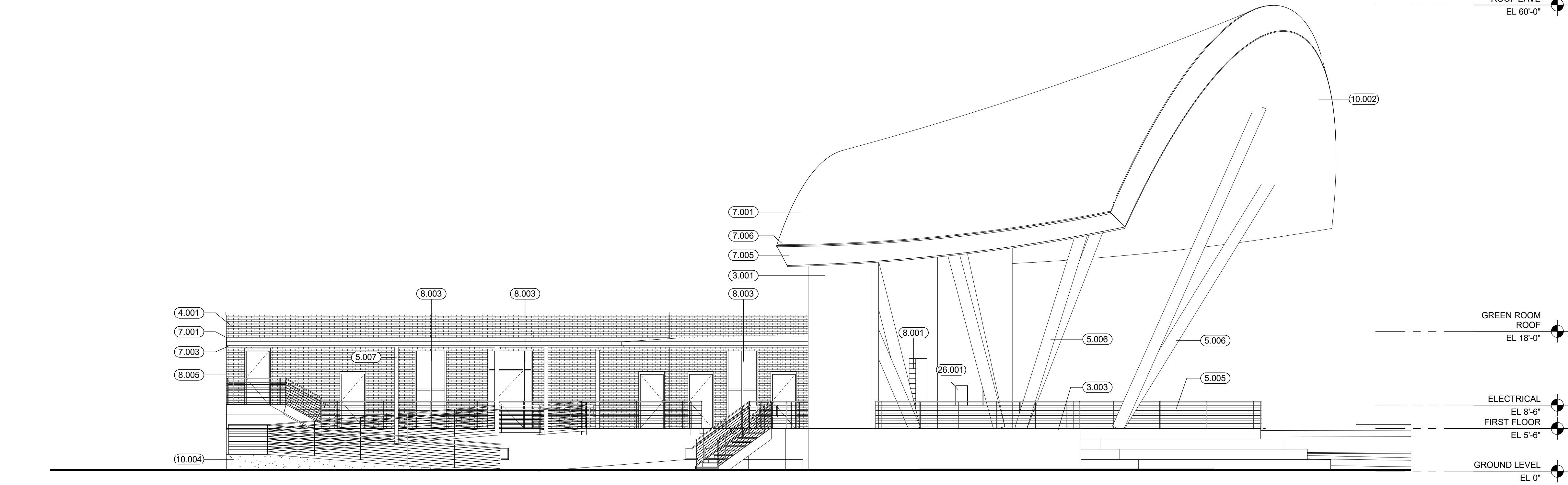
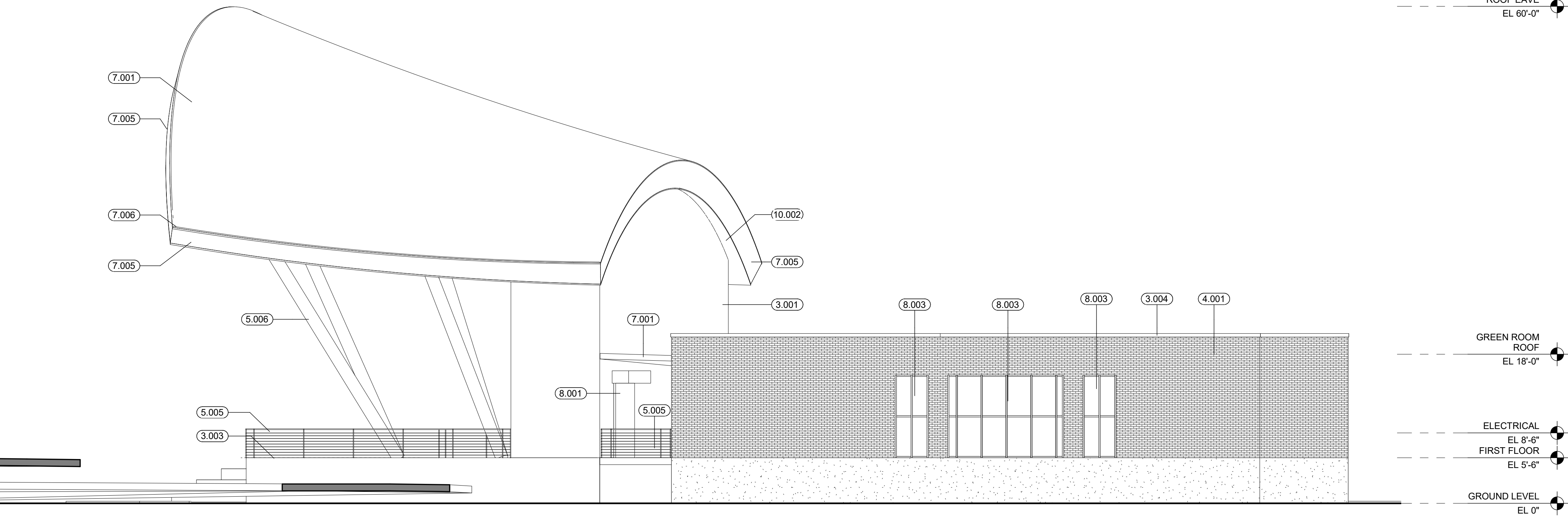
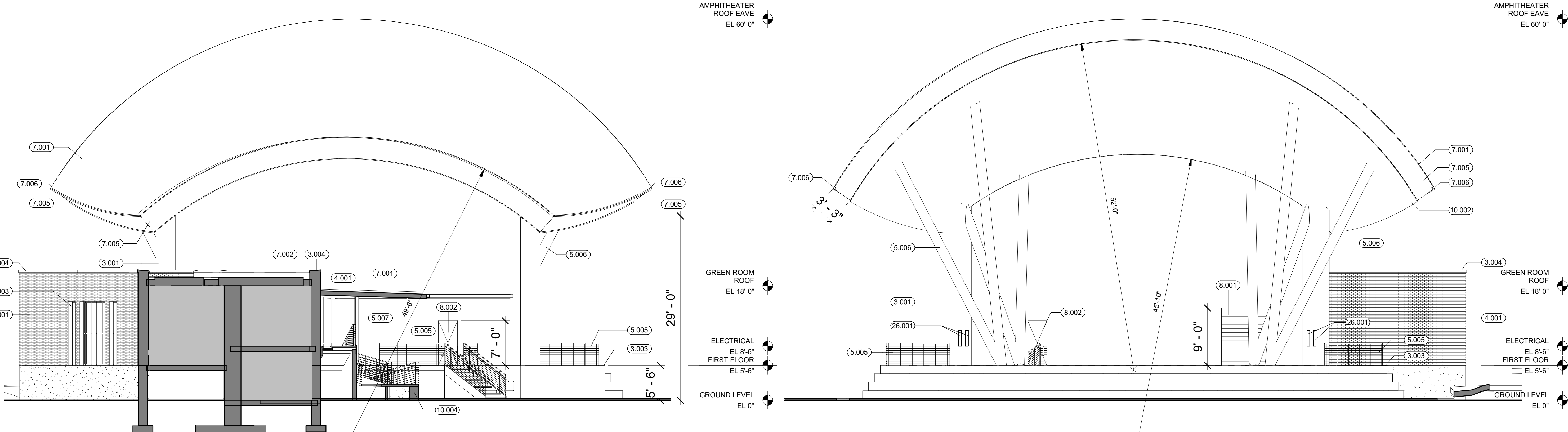
60679280

SHEET TITLE

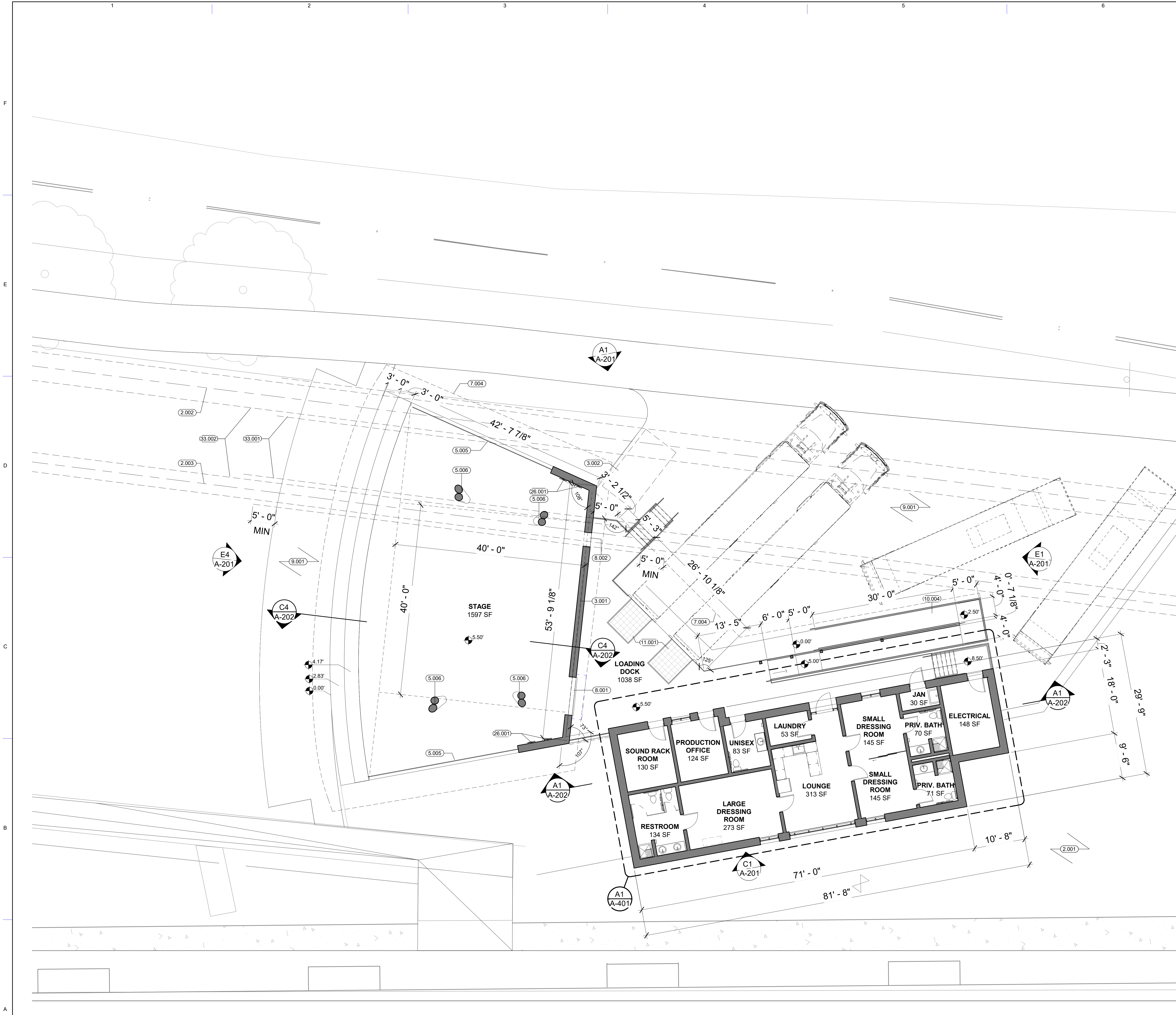
**BUILDING ELEVATIONS -
AMPHITHEATER**

SHEET NUMBER

A-201



GRAPHIC SCALES



GENERAL NOTES - FLOOR PLANS:

- A. REFER TO SHEET G-002 FOR ABBREVIATIONS.
B. REFER TO SHEET A-001 FOR GENERAL NOTES, LEGENDS AND SYMBOLS.
C. REFER TO STRUCTURAL, MECHANICAL, PLUMBING, FIRE PROTECTION, TELECOM AND ELECTRICAL DRAWINGS AND SPECIFICATIONS FOR ADDITIONAL WORK AND COORDINATE EXTENT WITH RESPECTIVE TRADES.
D. ALL DIMENSIONS ARE TO FINISH FACE OF NEW INTERIOR PARTITIONS, COLUMN CENTERLINE, FACE OF ROUGH OPENING OR FINISH FACE OF EXISTING WALLS UNO.
E. PROVIDE SOLID FRP W/D BLOCKING OR METAL STRAPPING AT PARTITIONS AS REQUIRED TO ACCOMMODATE INSTALLATION OF CASEWORK, LOCKERS, GRAB BARS, AV EQUIPMENT, SIGNAGE AND ALL SCHEDULED EQUIPMENT AND ACCESSORIES.
F. FIRE RATED PARTITIONS ARE NOTED BY PARTITION TYPE. REFER TO LIFE SAFETY PLANS FOR REQUIRED FIRE RATED AND/OR SMOKE PARTITION LOCATIONS.

SHEET KEYNOTES:

- 2.001 EXISTING BIORETENTION BASIN
2.002 EXISTING 72" SANITARY SEWER LINE
2.003 EXISTING 48" STORM SEWER LOINE
3.001 ARCHITECTURAL CONCRETE SHEAR WALL POURED WITH FORM LINER, PATTERN AND TEXTURE TO BE DETERMINED
3.002 DUMPSTER PAD
5.005 REMOVABLE STAINLESS STEEL RAILING
5.006 PAINTED GALVANIZED STEEL PIPE COLMNS WITH CASE CONNEX BASE AND CAPITALS
7.004 EXTENT OF ROOF ABOVE
8.001 96" X 108" OVERHEAD COILING DOOR
8.002 36" X 84" FORMED OPENING
9.001 PERMEABLE PAVERS
10.004 ACCESSIBLE CONCRETE RAMP WITH STAINLESS STEEL GUARDRAILS
11.001 DOCK LEVELER WITH REMOVABLE GUARDRAILS
26.001 ELECTRIC PANELS
33.001 OUTSIDE OF PROPOSED CASING
33.002 OUTSIDE OF EXISTING PIPE



PROJECT
LYNCHBURG RIVERFRONT PARK DEVELOPMENT & RENOVATION PROJECT
1100 Jefferson St
Lynchburg, VA 24504

CLIENT



CITY OF LYNCHBURG
900 Church St
Lynchburg, VA 24504
434.856.2489 tel
www.lyncburgva.gov

ARCHITECT OF RECORD

AECOM

10 South Jefferson Street, Suite 1600
Roanoke, Virginia 24011
540.857.3100 tel 540.857.3180 fax
www.aecom.com

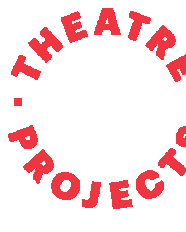
CONSULTANTS



LAWRENCE PERRY & ASSOCIATES
Consulting Engineers
Mechanical, Electrical, Plumbing Engineering
Lawrence Perry & Associates, Inc.
15 E. Salem Ave., Suite 101
Roanoke, VA 24011
540.342.1816 tel 540.344.3410 fax
lpa-inc.com



Structural Engineering
Lynch Mykins
1519 Summit Ave., Suite 101
Richmond, VA 23230
804.346.3935 tel
lynchmykins.com



Theater Performance and Design
Theatre Project Consultants
47 Water St.
South Norwalk, CT 06854
203.299.0830 tel 203.299.0835 fax
theatreprojects.com

SUBMISSION

SCHEMATIC DESIGN SUBMISSION
04.18.2022

PROJECT NUMBER

60679280

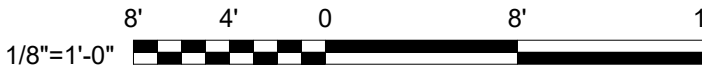
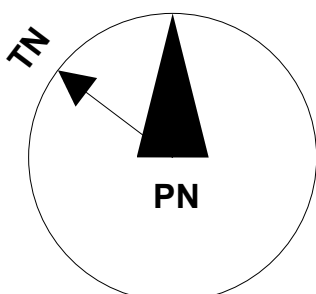
SHEET TITLE

GROUND FLOOR PLAN - AMPHITHEATER

SHEET NUMBER

A-101

GROUND FLOOR PLAN - AMPHITHEATER
1/8" = 1'-0"



GRAPHIC SCALES

©2016 AECOM Corporation

NOT FOR CONSTRUCTION