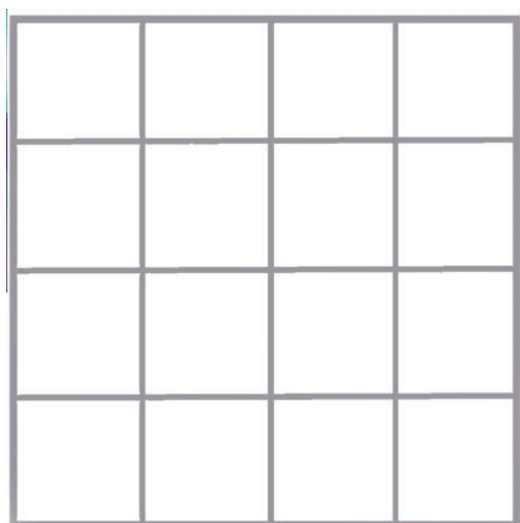


DRAWING WITH MARK!

Get a pencil and use the grid below to draw the picture as shown. The grids will help you to line everything up. Keep practicing and having fun!



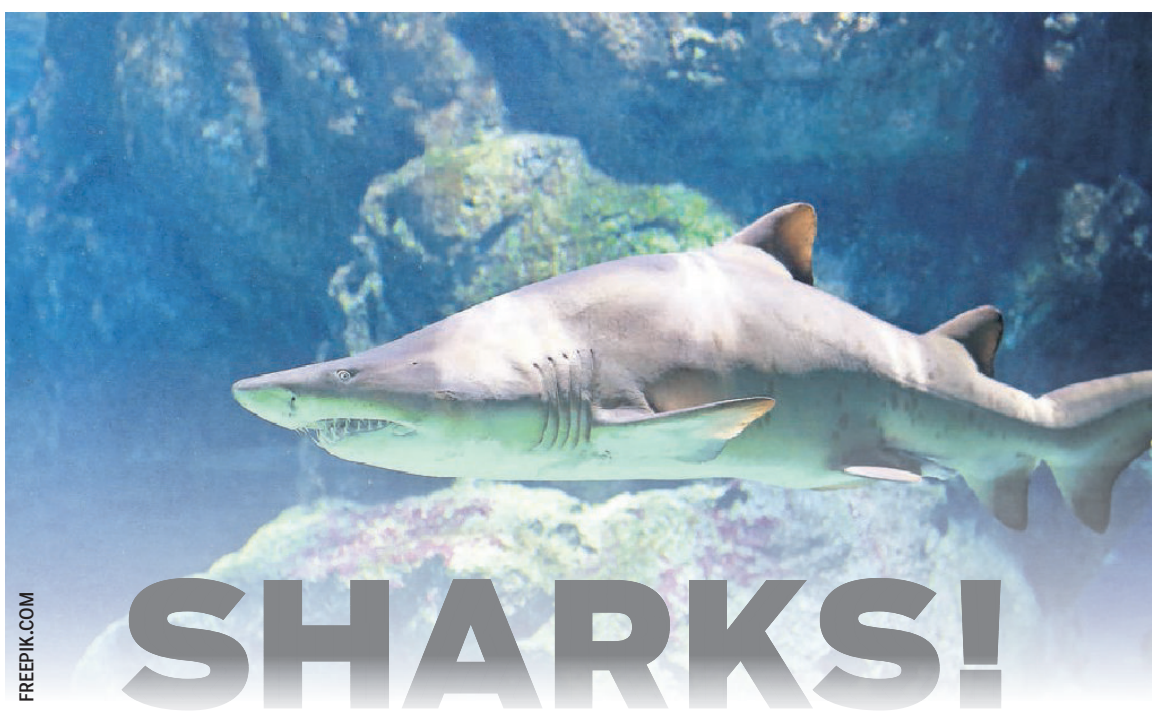
Watch Drawing with Mark!

- Check your local listings at www.DrawingwithMark.com
- Find the award-winning "Drawing with Mark" DVD episodes at Amazon.com and www.moviezyng/DWM.aspx

WORD FIND

- | | |
|-------------|---------|
| Fish | Tiger |
| Sharks | Song |
| Teeth | Animal |
| Water | Hunters |
| Great White | Prey |

T E H U N T E R S F
 W F F E S K R A H S
 Z P A Q G G U J A H
 L R A H W R H L S Q
 R E N U H E N I U N
 W Y I R T A F F L T
 U Q M E E T G L W W
 W K A T E W N D Z J
 Z J L A T H O R N C
 B C T W I I S P P Y
 S R E G I T N J G F
 M U F M A E D J T L



By Erika Enigk
More Content Now

They're some of the oldest animals on Earth. They have sharp teeth. And there's a catchy song about them that you've probably heard a few times. Today, we're talking about sharks.

Fast fish

Sharks are born swimming and never stop. As soon as a baby shark (see, you know that song!) is born, it swims away from its mother, if its mother is even around at all. Sharks need water rushing over their gills to give them oxygen, so if they stop moving, they won't be able to breathe! And some swim very fast. Great white sharks go up to 18 miles per hour.

But sharks aren't just fast. They also have great senses of smell and hearing. They also see pretty well, even in the dark. This makes them good hunters and very dangerous to their prey. And when they catch them, there's little chance of escape — sharks have thousands of teeth!

Types of sharks

There are tiny sharks and huge sharks. The

dwarf lantern shark is only about 7.5 inches long, but the whale shark is the biggest fish in the world at 50 feet long and weighing 20 tons. That's five times as heavy as a hippopotamus.

Most sharks live in saltwater, but some can live in freshwater. Bull sharks have been spotted in the Mississippi River. The mako shark is a fast swimmer and can jump out of the water, sometimes into boats! But the shark you're probably most familiar with is the great white shark, which is the most likely to attack a human. Tiger sharks are dangerous to humans, too, but they'll eat pretty much anything they come across. Altogether, there are more than 400 kinds of sharks.

Sharks and people

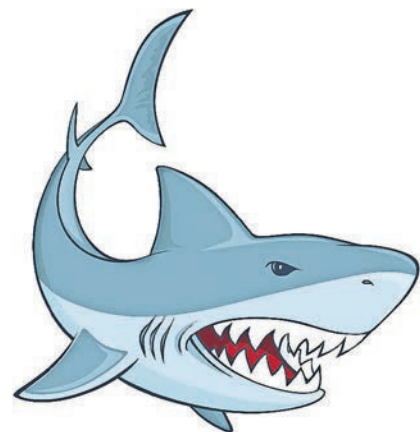
It's hard to imagine wanting to swim around near sharks knowing how fast, smart and deadly they are. And sharks have been known to attack people before. But they rarely want to. Most likely, a shark that comes across a person thinks it's another fish.

The sad truth is that humans are more deadly to sharks than sharks are to humans. Some humans hunt for sharks to make food and other items, and overfishing has threatened some shark populations. Climate change also is a threat to sharks, as it has been to many other animals.

Activity: Make a heel print shark

- You'll need:**
- Blue construction paper
 - A pencil
 - Markers
 - A foot

Put the back of your foot (so, not your toes!) on the construction paper and have a friend trace around your heel with a pencil. That's your shark coming out of the water. Color it with a gray marker and then give your shark eyes, a mouth, and teeth. Decorate the rest of the paper with waves or other ocean creatures.



ANGELS FROM THE ATTIC

By Mark Marderosian

