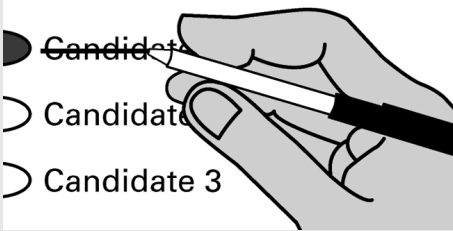


How to vote




- Use a blue or black ink pen to fill in the oval to the left of your choice.
- Vote for one in each race. If you vote for more than one, no votes will be counted.
- To vote for a candidate not listed, fill in the oval and print the candidate's name.

If you make a mistake



- Draw a line through the candidate's name. Then make another choice.
- If you need a replacement ballot, contact the Elections Department at (509) 524-2530.

**Who donates to campaigns?**  
View contributors for federal candidates  
  
Federal Election Commission  
[www.fec.gov](http://www.fec.gov)  
Toll Free (800) 424-9530

**READ:** Each candidate for partisan office may state a political party that he or she prefers. A candidate's preference does not imply that the candidate is nominated or endorsed by the party, or that the party approves of or associates with that candidate.

State of Washington  
Advisory Votes

**Advisory Vote No. 39**  
**Engrossed Substitute Senate Bill 5974**

The legislature increased, without a vote of the people, the tax on aircraft fuel from 11 cents to 18 cents per gallon, costing \$14 million in its first ten years, for government spending.

This tax increase should be:

- ☐ Repealed
- ☐ Maintained

**Advisory Vote No. 40**  
**Engrossed Substitute House Bill 2076**

The legislature imposed, without a vote of the people, premiums on "transportation network companies" to provide workers compensation to their drivers, costing an indeterminate amount in its first ten years, for government spending.

This tax increase should be:

- ☐ Repealed
- ☐ Maintained

Walla Walla County

**Proposition No. 1**  
**Amendment of Juvenile Detention Sales and Use Tax**

This Proposition, authorized by Resolution 22-171 of the Walla Walla County Board of Commissioners, concerns clarification of authorized uses of existing tax revenues. This measure would grant authority to the Walla Walla County Board of Commissioners to spend the funds raised by the existing Juvenile Detention Sales and Use Tax of one-tenth of one percent for costs associated with financing, design, acquisition, construction, equipping, operating, maintaining, remodeling, repairing, reequipping, and improvement of juvenile detention facilities and jails and for joint ventures to colocate juvenile detention facilities and to colocate jails, as authorized by RCW 82.14.350.

Should this measure be enacted into law?

- ☐ Yes
- ☐ No

Federal  
Partisan Offices

**U.S. Senator**  
**6 Year Term** **Vote for One**

- ☐ Patty Murray  
(Prefers Democratic Party)
- ☐ Tiffany Smiley  
(Prefers Republican Party)
- ☐ \_\_\_\_\_

**U.S. Representative**  
**Congressional District No. 5**  
**2 Year Term** **Vote for One**

- ☐ Cathy McMorris Rodgers  
(Prefers Republican Party)
- ☐ Natasha Hill  
(Prefers Democratic Party)
- ☐ \_\_\_\_\_

State of Washington  
Partisan Office

**Secretary of State**  
**2 Year Unexpired Term** **Vote for One**

- ☐ Steve Hobbs  
(Prefers Democratic Party)
- ☐ Julie Anderson  
(Prefers Nonpartisan Party)
- ☐ \_\_\_\_\_

State Legislative District No. 16  
Partisan Offices

**State Representative Position 1**  
**2 Year Term** **Vote for One**

- ☐ Mark Klicker  
(Prefers Republican Party)
- ☐ Jeff Strickler  
(Prefers Democratic Party)
- ☐ \_\_\_\_\_

**State Representative Position 2**  
**2 Year Term** **Vote for One**

- ☐ Skyler Rude  
(Prefers Republican Party)
- ☐ Jan Corn  
(Prefers Democratic Party)
- ☐ \_\_\_\_\_

Walla Walla County  
Partisan Offices

**County Assessor**  
**4 Year Term** **Vote for One**

- ☐ Byron Burres  
(Prefers Republican Party)
- ☐ \_\_\_\_\_

Turn Over to Continue Voting

## SAMPLE BALLOT - BACK

Walla Walla County Partisan Offices		Washington State Supreme Court Nonpartisan Offices		Prescott Joint Park and Recreation District		
<div>County Auditor 4 Year Term</div> <div>Vote for One</div> <div><div><div><input type="radio"/> Karen Martin (Prefers Republican Party)</div><div><input type="radio"/> Marjorie Denton Sanborn (Prefers Democratic Party)</div><div><input type="radio"/> _____</div></div></div>		<div>Justice Position #05 6 Year Term</div> <div>Vote for One</div> <div><div><div><input type="radio"/> Barbara Madsen</div><div><input type="radio"/> _____</div></div></div>		<div>Proposition No. 1 Maintenance &amp; Operation Excess Levy</div> <div>The Board of Commissioners of the Prescott Joint Park and Recreation District adopted Resolution No. 7-18-2022 B, concerning a proposition to finance maintenance and operation expenses. This proposition would authorize the District to levy the following excess taxes upon all taxable property within the District, for support of the District's maintenance and operation expenses for 2023:</div> <div><div><div>Levy Year/Collection Year</div><div>Approximate Levy Rate/\$1000 Assessed Value</div><div>Levy Amount</div></div><div><div>2022/2023</div><div>\$00.31</div><div>\$135,000.00</div></div></div>		
<div>County Clerk 4 Year Term</div> <div>Vote for One</div> <div><div><div><input type="radio"/> Kathy Martin (Prefers Republican Party)</div><div><input type="radio"/> _____</div></div></div>		<div>Justice Position #06 6 Year Term</div> <div>Vote for One</div> <div><div><div><input type="radio"/> G. Helen Whitener</div><div><input type="radio"/> _____</div></div></div>		<div>all as provided in Resolution No. 7-18-2022 B. Should this proposition be approved?</div> <div><div><input type="radio"/> Levy Yes</div><div><input type="radio"/> Levy No</div></div>		
<div>County Commissioner District 3 4 Year Term</div> <div>Vote for One</div> <div><div><div><input type="radio"/> Darren Z. Goble (Prefers Republican Party)</div><div><input type="radio"/> Gunner Fulmer (Prefers Republican Party)</div><div><input type="radio"/> _____</div></div></div>		<div>Washington State Court of Appeals Nonpartisan Office</div>				
		<div>Judge Position 1 6 Year Term</div> <div>Vote for One</div> <div><div><div><input type="radio"/> George Fearing</div><div><input type="radio"/> _____</div></div></div>				
<div>County Coroner 4 Year Term</div> <div>Vote for One</div> <div><div><div><input type="radio"/> Richard Greenwood (Prefers Republican Party)</div><div><input type="radio"/> _____</div></div></div>		<div>Walla Walla County District Court Nonpartisan Office</div>		<div>Columbia School District No. 400</div>		
<div>County Prosecuting Attorney 4 Year Term</div> <div>Vote for One</div> <div><div><div><input type="radio"/> Gabriel E Acosta (Prefers Republican Party)</div><div><input type="radio"/> Michelle Morales (Prefers Democratic Party)</div><div><input type="radio"/> _____</div></div></div>		<div>District Court Judge - Full Time 4 Year Term</div> <div>Vote for One</div> <div><div><div><input type="radio"/> Kristian E. Hedine</div><div><input type="radio"/> _____</div></div></div>		<div>Proposition No. 1 Capital Levy for Safety, Security and Infrastructure Improvements</div> <div>The Board of Directors of Columbia School District No. 400 adopted Resolution No. 2122-06, concerning a proposition for a levy for capital improvements. This proposition would authorize the District to levy the following excess taxes, on all taxable property within the District, to make District-wide safety, security, and infrastructure improvements (including renovating vestibule entry and access controls; upgrading restrooms, athletic facilities and Auditorium lighting and sound; and improving community access):</div> <div><div><div>Collection Year</div><div>Estimated Levy Rate/\$1000 Assessed Value</div><div>Levy Amount</div></div><div><div>2023</div><div>\$0.83</div><div>\$877,667</div></div><div><div>2024</div><div>\$0.81</div><div>\$877,667</div></div><div><div>2025</div><div>\$0.78</div><div>\$877,667</div></div><div><div>2026</div><div>\$0.76</div><div>\$877,667</div></div></div>		
<div>County Sheriff 4 Year Term</div> <div>Vote for One</div> <div><div><div><input type="radio"/> Mark Crider (Prefers Republican Party)</div><div><input type="radio"/> _____</div></div></div>				<div>all as provided in Resolution No.2122-02. Should this proposition be approved?</div> <div><div><input type="radio"/> Levy Yes</div><div><input type="radio"/> Levy No</div></div>		
<div>County Treasurer 4 Year Term</div> <div>Vote for One</div> <div><div><div><input type="radio"/> Gordon R Heimbigner (Prefers Republican Party)</div><div><input type="radio"/> _____</div></div></div>						
Washington State Supreme Court Nonpartisan Offices						
<div>Justice Position #01 6 Year Term</div> <div>Vote for One</div> <div><div><div><input type="radio"/> Mary I. Yu</div><div><input type="radio"/> _____</div></div></div>						