

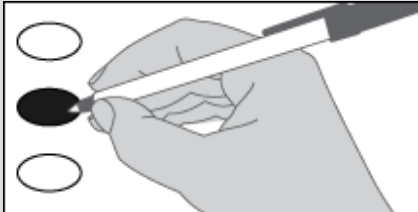


Official Ballot
Special Election
Benton County, Washington
April 26, 2022

Sample

Instructions

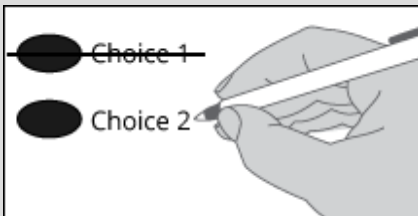
How to vote



Use a dark blue or black ink pen to completely fill in the oval next to your choice.

Vote for one in each measure. If you vote for more than one choice, no votes will be counted for that measure.

How to correct a mistake



To make a correction, draw a line through the entire choice.

You then have the option of making a different choice by completely filling in another oval.

How to return your ballot

Insert your completed ballot into security sleeve.

Insert security sleeve into the ballot return envelope.

Sign and date the voter declaration using the instructions on the return envelope using your official signature.

NOTE: WAC 434-230-015 prohibits the use of a Power of Attorney to satisfy the signature requirements on the return envelope. If unable to sign, voter should follow the instructions on the return envelope for having two witnesses.

A list of official drop box locations is included on the enclosed insert in your ballot packet.

For a list of the people and organizations that donated to state and local candidates and ballot measure campaigns, visit www.pdc.wa.gov.

School District Measure

**PROPOSITION NO. 1
KENNEWICK SCHOOL DISTRICT NO. 17
REPLACEMENT EDUCATIONAL PROGRAMS AND OPERATIONS
LEVY**

The Board of Directors of Kennewick School District No. 17 adopted Resolution No. 8, 2021-2022, concerning a proposition to finance educational programs and operations expenses. This proposition would authorize the District to meet the educational needs of its students by levying the following excess taxes, in place of an expiring levy, on all taxable property within the District, for educational programs and operations expenses not funded by the State of Washington:

<u>Collection Year</u>	<u>Estimated Levy Rate/\$1,000 Assessed Value</u>	<u>Levy Amount</u>
2023	\$1.75	\$20,625,000
2024	\$1.85	\$23,375,000

all as provided in Resolution No. 8, 2021-2022. Should this proposition be approved?

- LEVY YES
- LEVY NO

**PROPOSITION NO. 1
FINLEY SCHOOL DISTRICT NO. 53
REPLACEMENT EDUCATIONAL PROGRAMS AND OPERATION
LEVY**

The Board of Directors of Finley School District No. 53 adopted Resolution No. 2022-01, concerning a proposition to finance educational programs and operation expenses. This proposition would authorize the District to levy the following excess taxes, in place of an expiring levy, on all taxable property within the District, for the District's educational programs and operation expenses not funded by the State of Washington:

<u>Collection Year</u>	<u>Estimated Levy Rate/\$1,000 Assessed Value</u>	<u>Levy Amount</u>
2023	\$2.33	\$1,485,000
2024	\$2.37	\$1,540,000

all as provided in Resolution No. 2022-01. Should this proposition be approved?

- LEVY YES
- LEVY NO