



DRAFT ACTION PLAN SUMMARY

Our city and region are booming. In fact, according to a recent report by the Center City District in Philadelphia, Downtown Nashville has experienced the most rapid and strongest urban post-pandemic recovery in the U.S. While that's great news for our economy, our transportation system just isn't keeping pace.

Today, people driving and taking the bus Downtown spend more time in congestion, and fewer people are biking and walking than 10 years ago. There's a special event snarling traffic more often than not, and construction detours make it



People are stuck in traffic.



Travel options don't match desires.



Transit is slow and unreliable.

hard to walk and bike safely in parts of Downtown. Most importantly, we have too few high-quality multimodal options, which means that Nashvillians are often forced to drive.

Connect Downtown is a 10-year Action Plan to transform mobility for people throughout Middle Tennessee, improving safety, expanding travel options, and supporting Nashville's climate goals.

The Action Plan establishes a Downtown transportation system that improves safety and accessibility for everyone, balances the needs of all travelers and modes, and reduces congestion. Connect Downtown includes six goals to reflect today's needs.

Goals of Connect Downtown



Safe & Comfortable



Connected & Convenient



Equitable & Accessible



Sustainable & Resilient



Vibrant & Inviting



Balanced & Reliable

An outgrowth of many past planning efforts, Connect Downtown is led by the Nashville Department of Transportation and Multimodal Infrastructure (NDOT)—in partnership with WeGo Public Transit, the Tennessee Department of Transportation (TDOT), and the Nashville Downtown Partnership—and has been shaped by input from thousands of residents and key Downtown stakeholders.

Addressing the mobility challenges facing Downtown Nashville will require a combination of projects, programs, and policies that serve people using all forms of transportation.

Doing just one thing—or focusing on just one mode of travel—won't have the kind of impact that's needed. Therefore, Connect Downtown's recommendations work as a system of investments that are organized into five big moves.

What are Connect Downtown's five big moves?



BIG MOVE 1

Manage Congestion

Upgrade signals, improve traffic operations, and better manage events to keep people moving and improve system resiliency.



BIG MOVE 2

Improve Safety

Advance Vision Zero projects and programs to make Downtown's streets safer for people, especially Downtown's most vulnerable travelers.



BIG MOVE 3

Move More People

Prioritize buses on key corridors and increase the amount of service to provide faster and more reliable trips throughout the region.



BIG MOVE 4

Create Complete Networks

Develop safe, separated, and connected walking, rolling, biking, and scooting facilities to help people of all ages and abilities get into and around Downtown.



BIG MOVE 5

Maximize the Curb

Flex the uses of the curb throughout the day for deliveries, service vehicles, and passenger pick-up and drop-off to support local businesses and residents.

Together, these projects and strategies will make travel more reliable, more comfortable, faster, and safer for thousands of Nashvillians. For example, the new Traffic Management Center will help NDOT respond to congestion in real time, clearing traffic more quickly during special events, emergencies, and peak travel periods. And the transit priority corridors will move nearly 50,000 people each day, saving hours a month for bus riders and car drivers!

From new signals to safety projects to more frequent bus service to mobility lanes to flexible curb regulations, Connect Downtown includes projects and programs that support the entire Middle Tennessee region. The map on the next page gives an overview of the major capital projects included in Connect Downtown, and there are many complementary strategies described in the Action Plan.

The Connect Downtown projects also amplify other NDOT, WeGo, and TDOT priorities. Building on Metro's implementation of Vision Zero and WalknBike and WeGo's investments in nMotion and the Better Bus Plan, Connect Downtown includes projects that make regional investments work better.

TRANSIT PRIORITY CORRIDORS

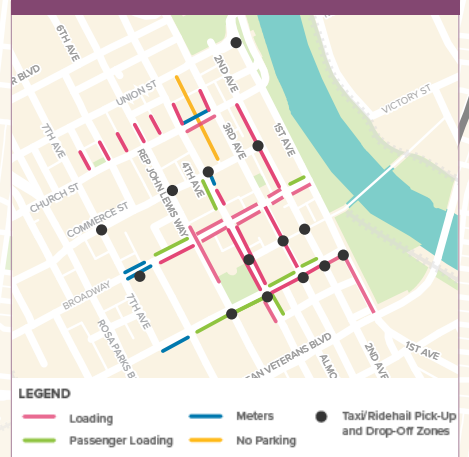
Connect Downtown recommends **three Transit Priority Corridors (TPCs)** to link WeGo Central with the new SoBro and East Bank Mobility Centers:

- Westside TPC
- James Robertson TPC
- East Bank TPC

PRIORITY LOADING AREAS

To ensure that the curb provides the most value for the most people—and that the uses of the curb are prioritized for activities that can't be moved elsewhere—Connect Downtown recommends a focus on **flexible uses and pilot programs that support additional space for loading and deliveries.**

FLEXIBLE CURB USES (6 AM - 12 PM)



MOBILITY LANES

Downtown Nashville's future network of mobility lanes **adds new, safe facilities, upgrades select bike lanes, and links to the existing and planned Greenways** system. Projects include the 1st Ave, 3rd Ave, and 7th Ave mobility lanes, as well as a Church St / Union St / Woodland Bridge connector.

ONE-WAY AND TWO-WAY CONVERSIONS

Connect Downtown recommends converting the operations of **2nd Ave, 3rd Ave, 4th Ave, and 7th Ave** to support people coming into and leaving from Downtown, to improve garage access, and to provide more space for curb uses, transit facilities, and mobility lanes.

LEGEND

- Transit Priority Corridor
- Queue Jump Lane/Bus Lane
- Mobility Lanes
- Upgrades to Existing Bike Facilities
- Planned Greenways
- Frequent Route Transit Priority
- One-Way or Two-Way Conversion
- Existing Bike Facilities
- Existing Greenways

Our Big Moves include dozens of projects and strategies, and they can't all be built at once. The good news is that there's a lot of "low-hanging fruit" to get us started—and those projects will make an immediate difference for our region. Doing nothing simply isn't an option, and inaction has its own costs.

Connect Downtown's projects and programs will be delivered in three phases. These phases support rapid progress while balancing fiscal realities and the partners' capacity, but they are not intended to be rigid. After all, implementation doesn't happen overnight; more engagement is needed to work through the design details for many of these projects.

Nashville will require a significant increase in transportation funding to fully implement Connect Downtown and support our growing city and region. The projects, programs, and new transit services included in this Action Plan will be implemented through a combination of existing local funds, competitive grant funds, developer contributions, and future partnerships.

Connect Downtown is the first step in developing a mobility system that meets Nashville's current and future needs. We can keep our economy thriving, save lives, reduce air pollution, and create a more equitable region by making meaningful and sustainable investments in transportation infrastructure and programs.



What will Connect Downtown do for you?

Investments in traffic management and "smart" signals will keep drivers moving, make trips more reliable, and improve safety.



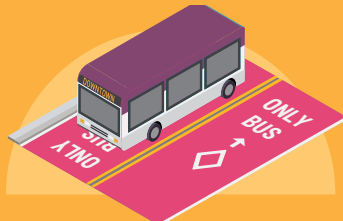
By managing congestion Downtown, people will be able to get into, out of, and through Downtown with fewer hassles, including after events.

A complete and connected network of mobility lanes will provide safe, separated facilities for people biking and scooting.



Giving people options to get around Downtown and connect to surrounding neighborhoods means fewer cars on the road.

New transit lanes will make bus trips faster, saving time for the tens of thousands of regional riders who use WeGo's services today.



Giving priority to buses will encourage many more people to take transit, freeing space on the road for people who need to drive and for our first responders.

Additional space for deliveries and loading zones will make it easier to do business in Downtown, supporting both goods distributors and people taking a taxi to a show.



Curb uses that change by time of day will ensure that a musician coming Downtown to play a show has access to a parking space at night, and a delivery driver has room to unload in the early morning.