

# *Generations* ON 1ST

55+ LIVING

26 1ST AVE SW, WATERTOWN



Opening March 1, 2022

[WWW.LIVINGWATERTOWN.COM](http://WWW.LIVINGWATERTOWN.COM)



# *Generations* ON 1ST 55+ LIVING

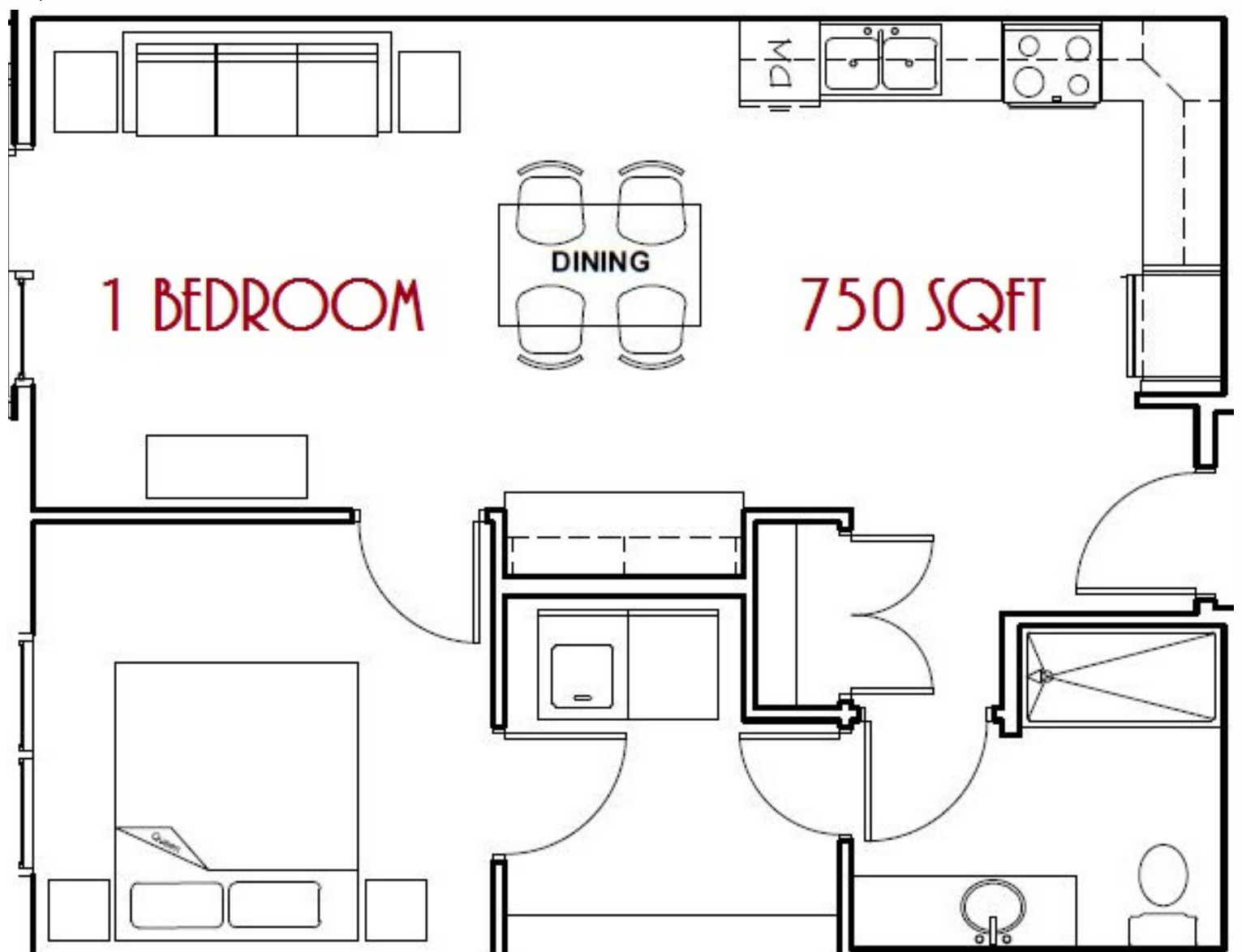
We are so honored and excited  
to be a part of  
Downtown Watertown!

Generations on 1st is a 55 and older, 72 unit, apartment building. The main level houses the new 12,000 sqft Senior Center and heated parking garage.

Applications and leases signings have begun! If you are not sure of what you'd like for a move in date, please contact us so we can help you put an apartment on hold to move in during 2022!

## *Building Features:*

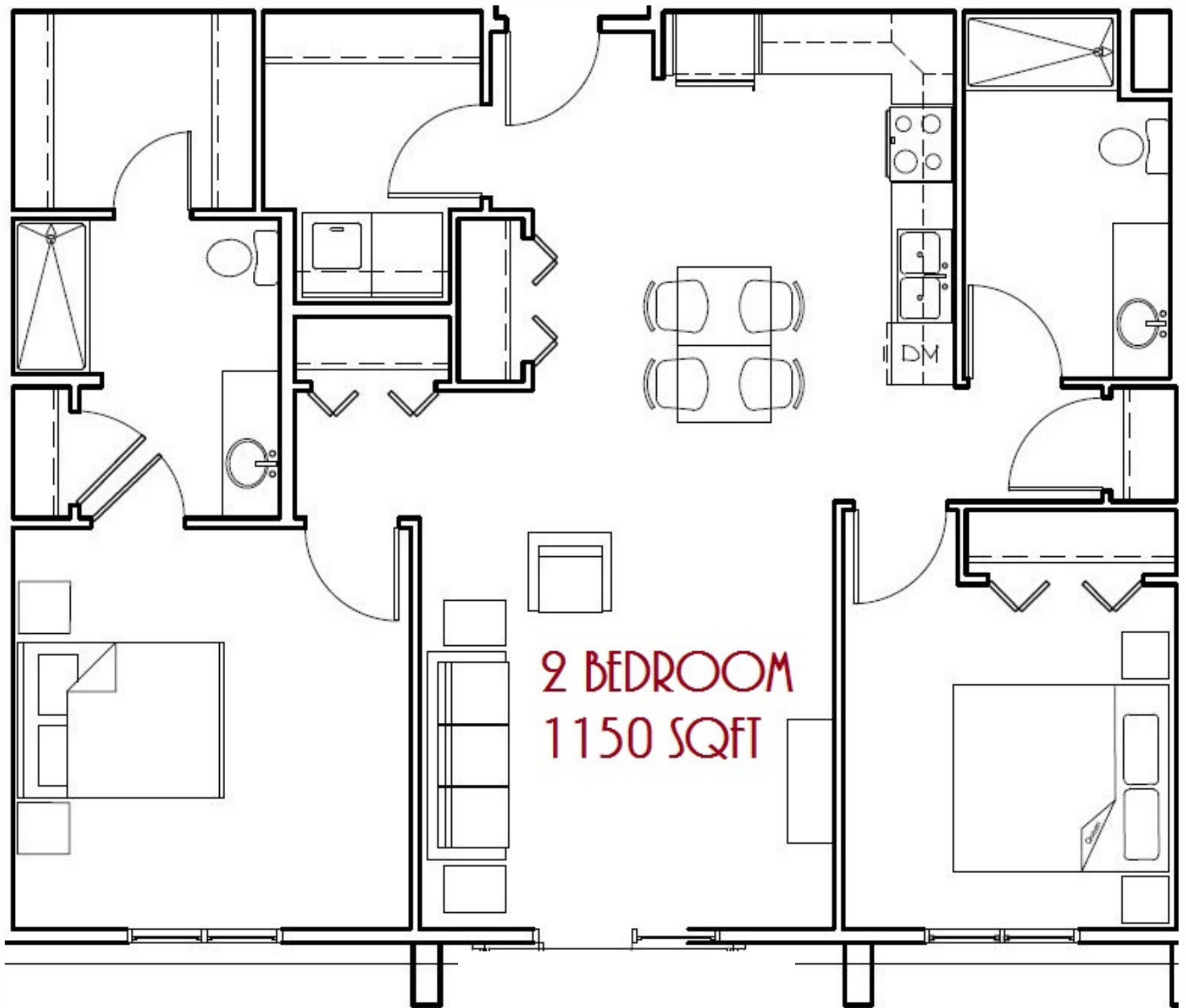
- Secure, controlled building and door access
- Rooftop Patio for tenant use as well as Senior Center
- Recreational Room
- Storage closets, additional fee per month \$40-70/month
- Heated Parking Garage; limited parking available; vehicles must be frequently driven \$50/month fee for 1 parking spot.
- On the public transportation route
- Guest suite available for family/friends, book through [www.vrbo.com](http://www.vrbo.com)
- Senior Center, Meals on Wheels and 60's+ Diner on main level



[WWW.LIVINGWATERTOWN.COM](http://WWW.LIVINGWATERTOWN.COM)

## *Apartment Features:*

- Laundry in each apartment
- Dishwasher, oven, refrigerator, built in microwave
- Walk-in shower
- Comfort height toilet
- Walk-in closet
- Carpet in bedroom(s) and plankwood flooring in other areas
- A/C, controlled by each apartment
- Baseboard heat, controlled by each apartment
- Water, sewer and garbage are paid for you
- Elevator
- Non-smoking premises
- Pet friendly with certain criteria and management approval



# Generations ON 1ST

55+ LIVING

Please note: Generations on 1st is not income based or low income housing. Applicants will be required to show proof of income and must meet requirements. If an applicant is retired: social security, disability, retirement, royalties, dividends, etc will be accepted as income and must tally to the approval threshold for income. If an applicant does not have these income sources, proof of funds will be required from a cash account (ie: savings account, checking account, etc).

Generations on 1st is a completely independent living property. We do not have or offer services for those that need an extra hand, outside of a broken or damaged item in the apartment.

In the event of a building emergency or fire, the elevator will be out of service due to safety codes. If you struggle with stairs, please consider a 2nd floor apartment so you have one flight to maneuver down to ground level.



Generations on 1st is proudly Managed by  
CP Business Management

Property Supervisor: Mindy Craig

Contact: 605.237.8806

Email: [mcraig@cpbusmgt.com](mailto:mcraig@cpbusmgt.com)

Mindy is a licensed REALTOR with MainStream Realty and is related to the property Owner.

**[WWW.LIVINGWATERTOWN.COM](http://WWW.LIVINGWATERTOWN.COM)**